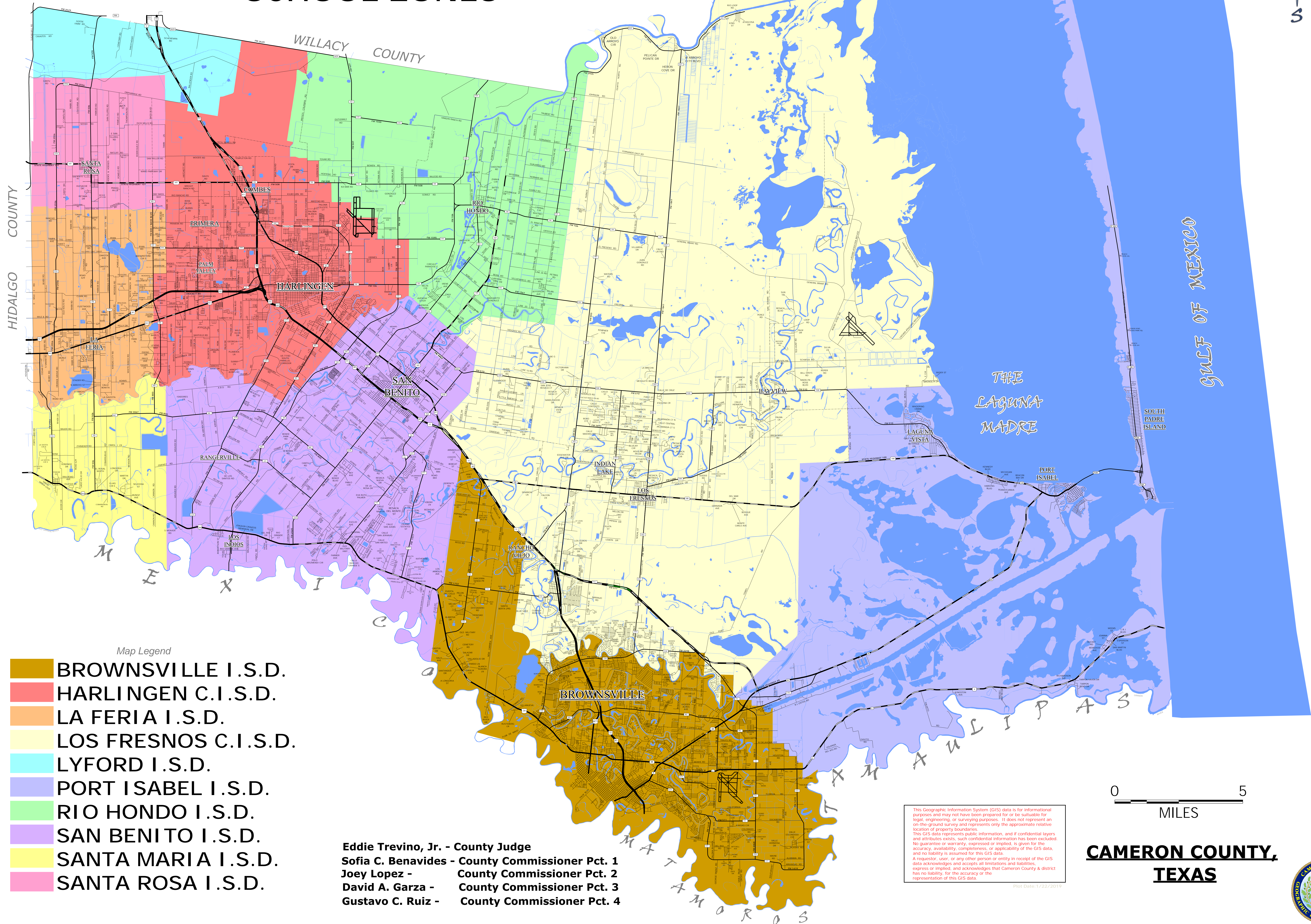
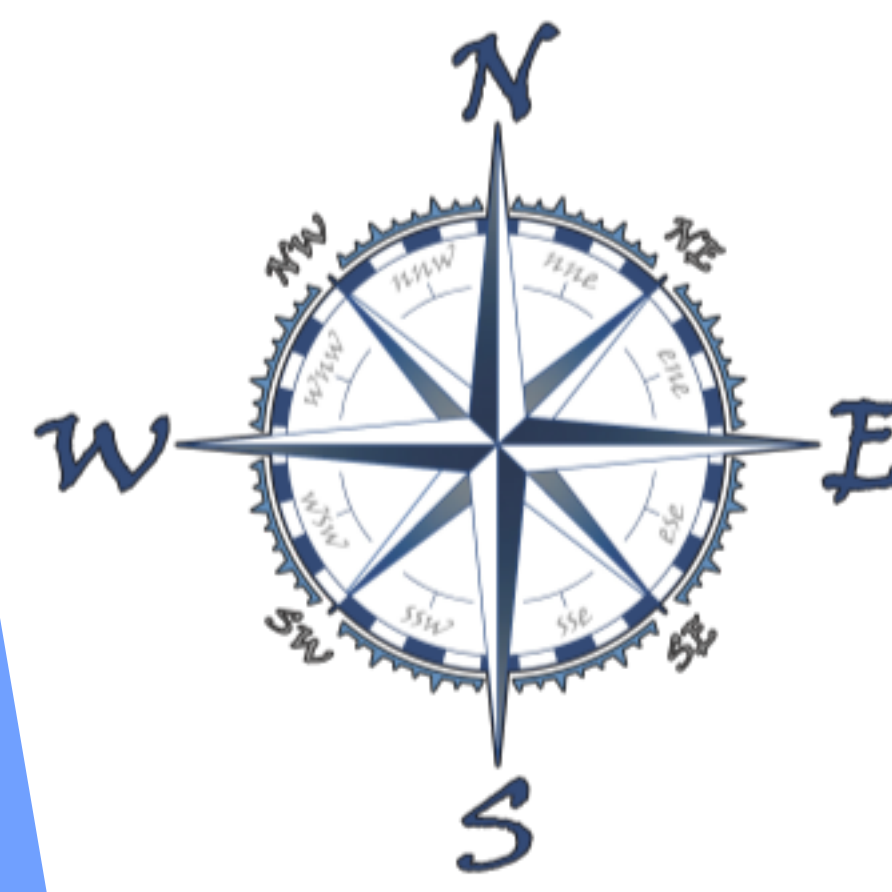


CAMERON COUNTY

SCHOOL ZONES



Map Legend

- BROWNSVILLE I.S.D.
- HARLINGEN C.I.S.D.
- LA FERIA I.S.D.
- LOS FRESNOS C.I.S.D.
- LYFORD I.S.D.
- PORT ISABEL I.S.D.
- RIO HONDO I.S.D.
- SAN BENITO I.S.D.
- SANTA MARIA I.S.D.
- SANTA ROSA I.S.D.

Eddie Trevino, Jr. - County Judge
Sofia C. Benavides - County Commissioner Pct. 1
Joey Lopez - County Commissioner Pct. 2
David A. Garza - County Commissioner Pct. 3
Gustavo C. Ruiz - County Commissioner Pct. 4

This Geographic Information System (GIS) data is for informational purposes and may not have been prepared for or be suitable for legal, engineering, or surveying purposes. It does not represent an on-the-ground survey and represents only the approximate relative location of property boundaries. This GIS data represents public information, and if confidential layers and attributes exist, such confidential information has been excluded. No guarantee or warranty, expressed or implied, is given for the accuracy, availability, completeness, or applicability of the GIS data, and no liability is assumed for this GIS data. A requestor, user, or any other person or entity in receipt of the GIS data acknowledges and accepts all limitations and liabilities, express or implied, and acknowledges that Cameron County & district has no liability, for the accuracy or the representation of this GIS data.



CAMERON COUNTY, TEXAS

