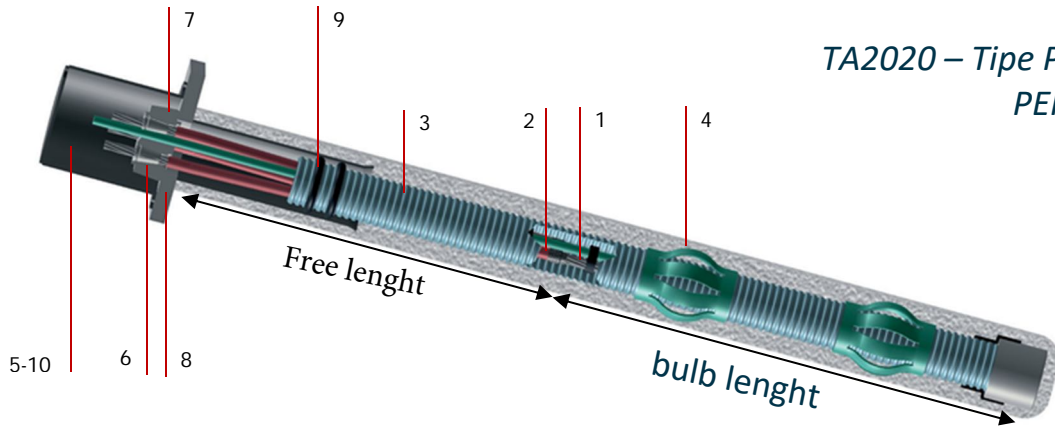


# Cable Anchor

TA2020 – Tipe P EN1537 -  
PERMANENT



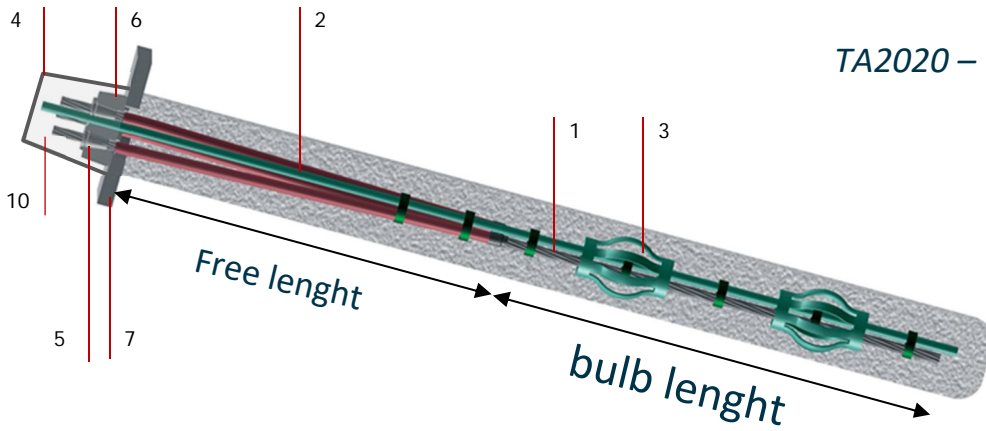
N°	Designation	T15	2 a 4	5 a 7	8 a 9	10 a 12	13 a 15
<b>anchor body– P2</b>							
<b>Steel</b>							
<i>Gravity Injection System, UI</i>							
1	Bulb length		Cable T15,2 - Clase 1860 MPa – Ø15,2mm / 0,6" [140 mm <sup>2</sup> ]				
2	Free length		Cable T15,2 sheathed and greased PE sheath / ELESA grease or similar				
<b>Anchor body– P1 T2 + TMM <sup>1</sup></b> <i>Anclaje P1 T2 en tubo metálico</i> Cordón centrador			 00 00 7100 [Ø 6mm]				
<b>Anchor body – P1 T21 + TMM <sup>1</sup></b> <i>Anclaje P1 T21 in metal tube</i> Separator			65 04 7081	65 07 7081	65 12 7081	65 15 7081	
<sup>1</sup> TMM : metal pipe-mantle – Not supplied by DYWIDAG.							
3	<b>Anchor body – P2 T2</b> corrugated sheath		65 04 4045	65 07 4045	65 12 4045	65 15 4045	
	centering cord		00 00 7100 [Ø 6mm]				
4	Grid or cage separator		32 WR 5084	40 WR 5084	47 WR 5084	63 T 5085	
<b>Anchor body – P2 AT</b> <i>O P2 T21</i>							
3	corrugated sheath		65 04 4045	65 07 4045	65 12 4045	65 15 4045	
	Separator		65 04 7081	65 07 7081	65 12 7081	65 15 7081	
4	Grid or cage centering		32 WR 5084	40 WR 5084	47 WR 5084	63 T 5085	

N°	Designation	T15	2 - 3	4	5	6 - 7	8 - 9	10 a 12	13 a 15
<b>anchor head – P2</b>									
P2 1P : NOT Retrievable P2 2P : Retrievable									
5	Reinforced plastic hood		68 07 7230	68 12 7230	68 19 7230		68 27 7230		
6	wedges		68 00 0036-H						
7	wedge plate		68 04 1350	68 07 1362	68 12 1362		68 15 1362		
	Retractable wedge plate		65 04 1363	65 07 1363	65 12 1363		65 15 1363		
8	Galvanized distribution plate with tube <sup>2</sup>		65 03	65 04	65 05	65 07	65 09 1126FZ	65 12 1126FZ	65 15 1126FZ
9	Tube-sheath joint		AZROM6520	AZROM8025	AZROM9730		AZROM9730	AZROM10030	
10	Grease or Gel		000 7076						

<sup>2</sup> See « DSI GT-TECHDOC-No.015 – Coatings and corrosion categories»

# Cable anchor

TA2020 – Tipe T EN1537  
- TEMPORARY



N°	Designation	T15	2 a 4	5 a 7	8 - 9	10 a 12	13 a 15
<b>anchor body P1</b>							
Steel							
Gravity injection system, IU / IR							
1	Bulb length		Cable T15,2 - Classe 1860 MPa – Ø15,2mm / 0,6" [140 mm²]				
2	Free length		Sheathed and greased cable PE sheath / Eles grease or similar				
<b>anchor body – P1 T2</b> Centering cord			 00 00 7100 [Ø 6mm]				
<b>anchor body – P1 T21</b> Separator			65 04 7081	65 07 7081	65 12 7081	65 15 7081	
3	<b>anchor body– P1 AT</b> Grid or cage centering		32 WR 5084	40 WR 5084	63 T 5085	75 TR 5085	

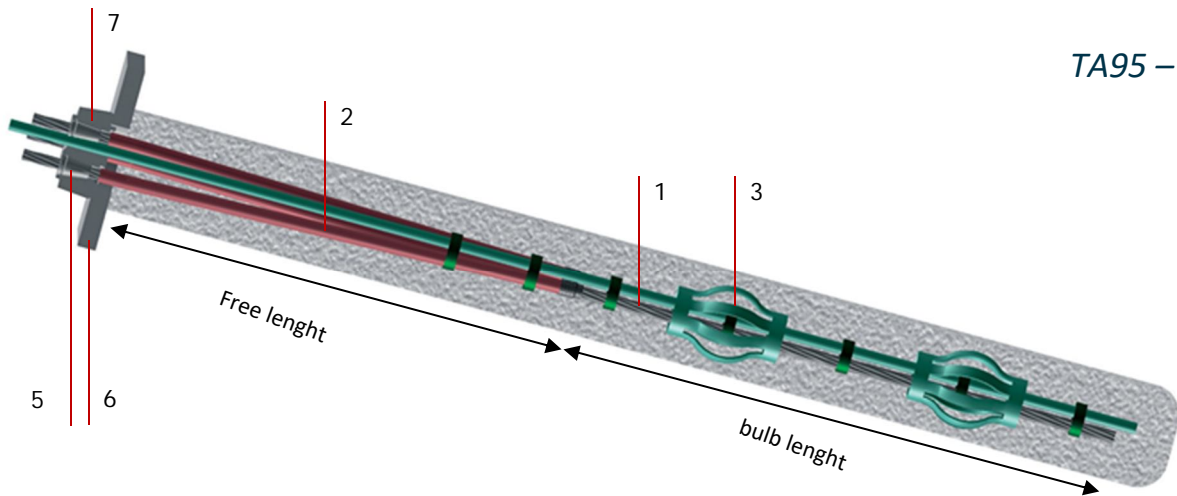
N°	Designation	T15	2 - 3	4	5	6 - 7	8 - 9	10 a 12	13 a 15	
<b>anchor head P1</b>										
	P1 1C : NOT Retrievable P1 2P : Retrievable		 P1 1C				 P1 2P			
<b>anchor head P1 1C</b>										
4	Adjustable plastic hood		65 04 7082	65 07 7082	65 12 7082					
6	Cast iron wedge plate		65 04 1125	65 07 1125	65 12 1125				68 15 1362	
7	Flat plate <sup>1</sup>	(1128)	65 03	65 04	65 05	65 07	65 09 1128	65 12 1128		
8	connecting thimbles		65 01 3047							
<b>anchor head P1 2P</b>										
4	Reinforced plastic hood		68 07 7230	68 12 7230	68 19 7230				68 27 7230	
6	Retractable wedge plate + transition ring		65 04 1363 65 04 2047	65 07 1363 65 07 2047	65 12 1363 65 12 2047				65 15 1363 65 15 2047	
7	flat plate <sup>1</sup>	(1128)	65 04 1128	65 05	65 07	65 09 1128	65 12 1128		65 15 1128	
9	Short connecting thimbles + retention plate	(2236)	65 04	65 07		00 00 3028	65 12 2236		65 15 2236	
5	wedges		68 00 0036-H							
10	Grease		00 00 6068							

<sup>1</sup> Wedge plate « 65..1125 » and Plate « 65..1128G »

Wedge Plate « 68..1362 & 65..1363 » & Plate « 65..1128S »





# Cable anchor

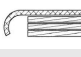
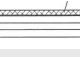


TA95 – P0



N°	Designation	T15	2 a 4	5 a 7	8 - 9	10 a 12	13 a 15
<b>anchor body – P0</b>							
<b>Steel</b>							
<i>Gravity injection system, UI / IR</i>							
1	Bulb length	Cable T15,2 - Classe 1860 MPa – Ø15,2mm / 0,6" [140 mm²]					
2	Free lenght	Single sheathed cable - PE sheath					

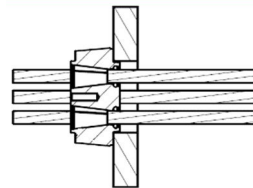
<b>anchor body – P0 T2</b> centering cord		 00 00 7100 [Ø 6mm]					
--	--	--	--	--	--	--	--

<b>anchor body – P0 T21</b> Separator		 65 04 7081	 65 07 7081	 65 12 7081	 65 15 7081
--	--	--	---	--	---

<b>anchor body– P0 AT</b> Grid or cage centering		 32 WR 5084	 40 WR 5084	 63 T 5085	 75 TR 5085
---	--	---	---	--	---

N°	Designation	T15	2 - 3	4	5	6 - 7	8 - 9	10 a 12	13 a 15
<b>anchor head - P0</b>									

P0 1 : NOT Retrievable  
2 : Retrievable



5	wedges	68 00 0036-H							
6	flat plate <sup>1</sup>	(1128)	65 03	65 04	65 05	65 07	65 09 1128	65 12 1128	65 15 1128
7	NON-reteivable wedge plate	65 04 1125	68 07 1362				68 12 1362	68 15 1362	
	Reteivable wedge plate	65 04 1363	65 07 1363				65 12 1363		

<sup>1</sup> Wedge Plate « 65..1125 » and Plate « 65..1128G »/

Wedge plate « 68..1362 & 65..1363 » & Plate « 65..1128S »

# Cable anchor

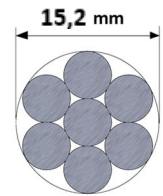
CABLES and ACCESSORIES that constitute the anchoring systems.

Steel characteristics T15.2 Class 1860 MPa - 15.2mm / 0.6" [140 mm<sup>2</sup>]

Dimensions and mechanical characteristics

N° cables	Section [mm <sup>2</sup> ]	Elastic limit Feg [kN]	breaking load Frg [kN]	Weight [kg/m]
1	140	229	260	1,10
2	280	458	521	2,20
3	420	687	781	3,30
4	560	916	1042	4,40
5	700	1145	1302	5,50
6	840	1374	1562	6,60
7	980	1603	1823	7,70
8	1 120	1832	2083	8,80
9	1 260	2061	2344	9,90
10	1 400	2290	2604	11,00
11	1 540	2519	2864	12,10
12	1 680	2748	3125	13,20
13	1 820	2977	3385	14,30
14	1 960	3206	3646	15,40
15	2 100	3435	3906	16,50
16	2 240	3664	4166	17,60
17	2 380	3893	4427	18,70
18	2 520	4122	4687	19,80
19	2 660	4351	4948	20,90
20	2 800	4580	5208	22,00
21	2 940	4809	5468	23,10
22	3 080	5038	5729	24,20

Note: Anchors > 12 Cables on specific request.



mechanical characteristics

Steel	elongation to max load A <sub>gt</sub> [%]	Young's modulus [N/mm <sup>2</sup> ]	Relaxation	coefficient of poisson and
1T15,2	3,5	195 000	Très Basse Relaxation (TBR)	0,30

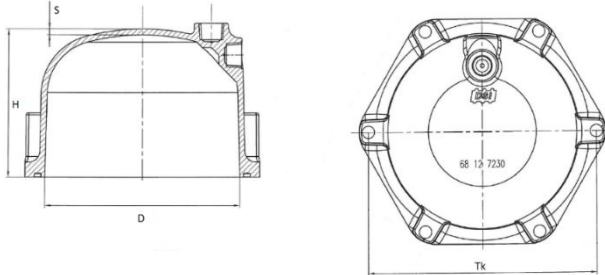
Approval BMVIT-327.120/0008-IV/ST2/2015

# Cable anchor

acesories

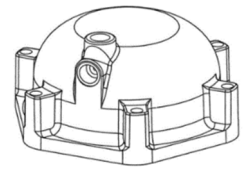
Cables Accessories

## Reinforced plastic hood



Nº de Cables	Reference	H [mm]	D [mm]	Tk [mm]	S [mm]	Weight [kg]
2T15 a 4T15	68 07 7230	110	138,1	170,2	5,1	0,51
5T15 a 7T15	68 12 7230	125	166,4	206,4	5,1	0,69
8T15 a 12T15	68 19 7230	135	250,3	271,7	6,4	1,16
13T15 a 15T15	68 27 7230	145	247,8	281,7	6,4 a 7,6	1,79

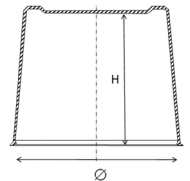
Material : Nylon 6, 20% fiberglass



## Adjustable plastic hood

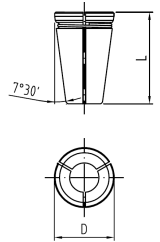
Nº de Cables	Reference	Ø [mm]	H [mm]	Weight [kg]
2T15 a 4T15	65 04 7082	131	106	0,10
5T15 a 7T15	65 07 7082	155,3	125	0,14
8T15 a 12T15	65 12 7082	188	135	0,19

Material : PE



## wedges

Cable [mm]	Reference	D [mm]	L [mm]	Degre	Weight [kg]
15,2	68 00 0036-H	29	42	30°	0,085



## anticorrosive product

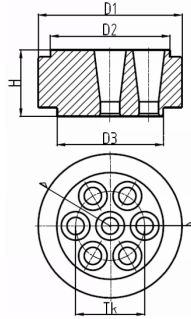
Name	Reference	Density [g/cm³]	Point of fusion [°C]	Flashpoint [°C]	Container	Use
PETROPLAST Cera	000 7076	0,9 a 23°C	61 a 63	> 160	24kg	liquefaction from 90°C to 120°C

Name	Reference	Density [g/cm³]	Temp. Max. use [°C]	Flashpoint [°C]	Container	Use
ELESA Grasa	00 00 6068	0,90	150	> 150	25kg	use temperature -30 a +80°C

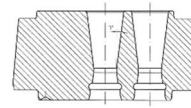
# Cable anchor

## NON-Retrievable wedge plate

68..1362



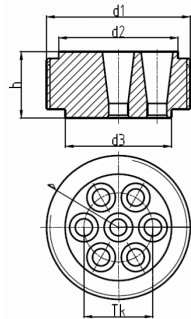
65..1125



N° de Cables	Reference	H [mm]	D1 [mm]	D2 [mm]	D3 [mm]	Tk [mm]	Weight [kg]
2T15 a 4T15	68 04 1350	55	110	88	71	50	2,8
	65 04 1125	52	112/120	88	85	50	2,6
5T15 a 7T15	68 07 1362	60	130	108	96	70	4,3
	65 07 1125	62	135/145	107	105	70	5,6
8T15 a 12T15	68 12 1362	65	170	144	128	40/105	8,0
	65 12 1125	80	163,5/175	144	139,5	40/105	9,0
13T15 a 15T15	68 15 1362	70	190	164	148	60/125	11,1

## Retrievable Threaded Shim Plate

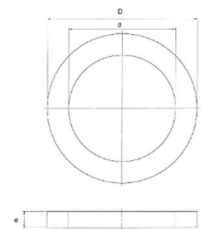
65..1363



N° de Cables	Reference	H [mm]	D1 [mm]	D2 [mm]	D3 [mm]	Tk [mm]	Weight [kg]
2T15 a 4T15	65 04 1363	55	TR115x6	88	71	50	3,4
5T15 a 7T15	65 07 1363	60	TR135x6	108	96	70	5,3
8T15 a 12T15	65 12 1363	65	TR175x6	144	128	40/105	8,3
13T15 a 15T15	65 15 1363	70	TR193x6	164	148	60/125	11,4

## Transition ring for retrievable wedge plate

Nombre de Cables	Referencia	H [mm]	D1 [mm]	D2 [mm]	Weight [kg]
2T15 a 4T15	65 04 2047	15	74,3	114,3	0,7
5T15	65 05 2047	15	93	133	1,1
6T15 a 7T15	65 07 2047	15	99,7	139,7	0,9
8T15 a 9T15	65 09 2047	15	114	146	0,8
12T15	65 12 2047	15	136,3	168,3	0,9
15T15	65 15 2047	20	158	190	1,4

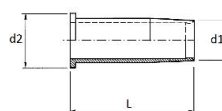


## connecting thimble

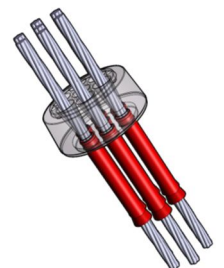
Cable [mm]	Referencia	L [mm]	d1 [mm]	d2 [mm]	Weight [kg]
15,2	65 01 3047	160	25,2	28,6	0,02
15,2	00 00 3028	70	22,0	30,0	0,01



65 01 3047



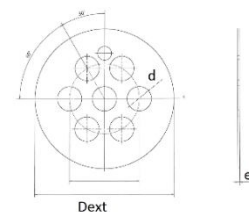
00 00 3028



# Cable anchor

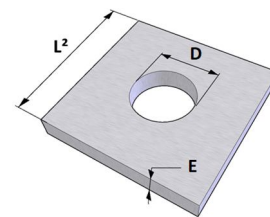
## Placa de retención para dedos cortos 00 00 3028

Nombre de Cables	Referencia	Dext [mm]	d [mm]	e [mm]	Weight [kg]
2T15 a 3T15	65 03 2236	114,3	24,5	2	0,13
4T15	65 04 2236	114,3	24,5	2	0,12
5T15	65 05 2236	139,7	24,5	2	0,2
7T15	65 07 2236	139,7	24,5	2	0,15
09T15	65 09 2236	146	24,5	2	0,2
12T15	65 12 2236	168,3	24,5	2	0,3
15T15	65 15 2236	190	24,5	2	1,7



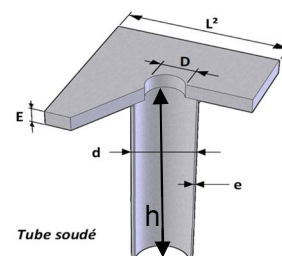
## Flat plate \*

N° de Cables	Reference	L [mm]	E [mm]	Wedge plate	D [mm]	Weight [kg]	
2T15 a 3T15	65 03 1128	S G	200	30	68 04 1350 /1363	75	8,4
					65 04 1125 68 04	87	8,0
4T15	65 04 1128	S G	230	35	1350 /1363 65 04	75	13,3
					1125 68 07	87	12,9
5T15	65 05 1128	S G	230	35	1362 /1363 65 07	100	12,4
					1125 68 07	107	12,1
6T15 & 7T15	65 07 1128	S G	260	40	1362 /1363 65 07	100	18,8
					1125 68 12	107	18,4
8T15 & 9T15	65 09 1128	S G	295	50	1362 /1363 65 12	130	29,0
					1125 68 12	141	28,0
10T15 a 12T15	65 12 1128	S G	330	50	1362 /1363 65 12	130	37,5
					1125 68 15	141	36,6
13T15 a 15T15	65 15 1128	S	380	55	1362 /1363	150	54,7



## Plate with rear tube\*

N° de Cables	Reference	Plate	Taladro 120°	Tube		Weight [kg]
				h [mm]	d x e [mm]	
2T15 a 3T15	65 03 1126 FZ	65 03 1128	3xM10	400	88,9 x 2,9	10,8
4T15	65 04 1126 FZ	65 04 1128	3xM10	400	88,9 x 2,9	15,8
5T15	65 05 1126 FZ	65 05 1128	3xM10	400	114,3 x 3,2	16,8
6T15 a 7T15	65 07 1126 FZ	65 07 1128	3xM10	400	114,3 x 3,2	22,3
8T15 a 9T15	65 09 1126 FZ	65 09 1128	3xM10	500	127,0 x 3,2	33,8
10T15 a 12T15	65 12 1126 FZ	65 12 1128	3xM10	500	139,7 x 3,6	43,6
13T15 a 15T15	65 15 1126 FZ	65 15 1128	3xM10	500	152,4 x 4,0	62,0



## Inclined plate\*

α	Reference	A [mm]	Weight [kg]
10°	Chaise 10°	67,0	15,2
15°	Chaise 15°	79,2	16,0
20°	Chaise 20°	92,5	17,0
25°	Chaise 25°	107,0	17,5
30°	Chaise 30°	123,2	18,5
35°	Chaise 35°	141,4	18,5
40°	Chaise 40°	162,5	19,0
45°	Chaise 45°	188,1	20,0

Note the possibility of optimizing the dimensions depending on the perforation.

\* Provisional, P0 & P1 : in black

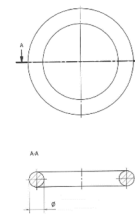
/

Permanent & P2 : painted or galvanized

# Cable anchor

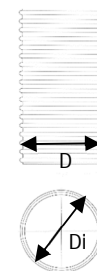
## Rear tube-chainstay joint

N°de Cables	Reference	N°	D [mm]	d [mm]	Ø [mm]
2T15 a 4T15	00 05 5099	AZROM6520	87	47	20
5T15 a 7T15	00 09 5099	AZROM8025	113	63	25
8T15 a 9T15	00 10 5099	AZROM9730	145	85	30
10T15 a 12T15	00 10 5099	AZROM9730	145	85	30
13T15 a 15T15	00 13 5099	AZROM10030	149	89	30



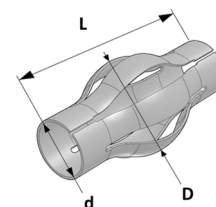
## Corrugated sheath

N° de Cables	Reference	D int [mm]	D [mm]	Thickness [mm]	Weight [kg]
2T15 a 4T15	65 04 4045	54,3	63,9	1,0	0,30
5T15 a 7T15	65 07 4045	68,3	78,3	1,0	0,50
8T15 a 9T15	65 12 4045	87,0	97,5	1,5	0,70
10T15 a 12T15	65 12 4045	87,0	97,5	1,5	0,70
13T15 a 15T15	65 15 4045	113,0	125,0	1,5	0,85



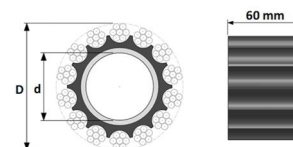
## Centering cage or grid

Ø nom [mm]	Reference	D [mm]	D int/ext [mm]	L [mm]	Weight [kg]
2T15 a 4T15	32 WR 5084	125	57 / 63	285	0,19
5T15 a 7T15	40 WR 5084	125	67,8 / 75	285	0,25
8T15 a 9T15	47 WR 5084	125	84,6 / 90	285	0,26
10T15 a 12T15	63 T 5085	175	103,6 / 110	290	0,42
13T15 a 15T15	75 TR 5084	180	117,6 / 125	285	0,52



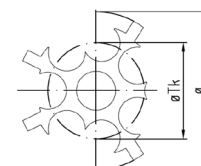
## Long separator bulb for tube-manchete

Ø nom [mm]	Reference	D [mm]	d [mm]	E [mm]	Weight [kg]
2T15 a 12T15	65 14 4250	89,3	50,5	60	0,16



## Spacer for bulb length

Ø nom [mm]	Reference	Ø [mm]	Ø Tk [mm]	Weight [kg]
2T15 a 4T15	65 04 7081	52	25,8	0,01
5T15 a 7T15	65 07 7081	67	40,8	0,01
8T15 a 12T15	65 12 7081	86	59,8	0,02
13T15 a 15T15	65 15 7081	99	71,0	-

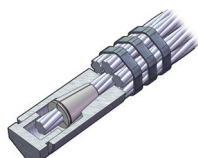


## Centering cord for bulb



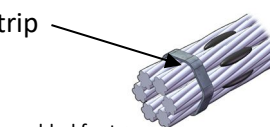
Ø nom [mm]	Reference	d [mm]	Material	Weight [kg/m]
2T15 a 15T15	00 00 7100	6	PeHD	0,03

pointers



mechanical lock

Strip



welded foot