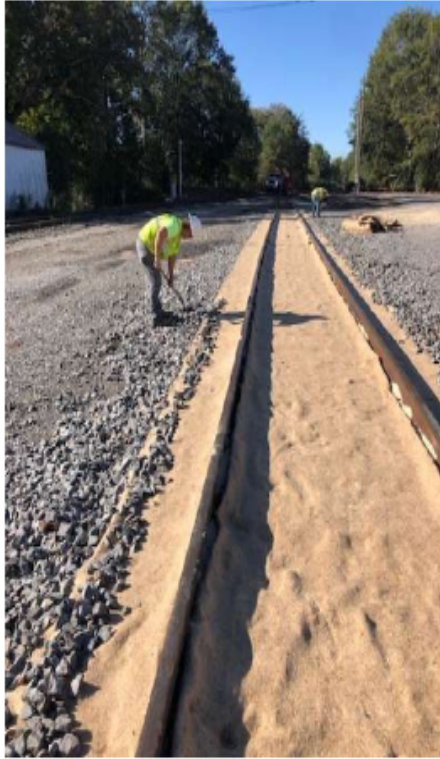


59" x 50' x .75" - 'BIO-PAD' RAIL ROAD TRANSFER STATION PAD



7.5' x 120'

CATEGORY 4 - EROSION CONTROL BLANKET-





A dynamically ponding & filtering BMP alternative that requires no trenching.

Product Information



Outer Material	Multi-Filament Polypropylene
Filler	Cellulose Fiber
Color	Blue
Configuration	Sock
Stakes Needed	Every 10 feet
Field Functional Longevity	2 Years

Features

- Allows water to flow steadily and at a controlled rate while preventing fine soil particles from passing through.
- Sock's bulk and weight (around 16lbs per linear ft) ensures ground contact is made while preventing elements from flowing beneath
- Faster and more efficient installation.
- 110 linear feet can be installed in less than 5 minutes with a 3-man crew & a skid steer.
- Comparable installed price to traditional silt fencing.
- Less labor costs and fewer inefficiencies lead to cost comparability.
- Quick, easy, biodegradable cleanup.
- Filler material = biodegradable; therefore, all that requires cleanup (in most cases) is the netting.
- Better performance/functional field longevity.
- Diamond Sock dynamically ponds & filters runoff allowing the BMP to do its job better and for a longer period of time.
- Use for perimeter control, inlet protection, ditch checks, and slope interruption.

Product #	Description	Unit	Quantity	Shipping Weight
DP8-190-1	8" 1 PIECE	Linear Feet	190	1600 lbs
DP8-18-10	8" 18 PIECES, 10 FT	Linear Feet	180	1600 lbs
DP8-9-20	8" 9 PIECES, 20 FT	Linear Feet	180	1600 lbs
DP12-110-1	12" 1 PIECE	Linear Feet	110	1700 lbs
DP12-10-10	12" 10 PIECES, 10 FT	Linear Feet	100	1650 lbs
DP18-55-1	18" 1 PIECE	Linear Feet	55	1750 lbs
DP18-5-10	18" 5 PIECES, 10 FT	Linear Feet	50	1650 lbs
DP24-35-1	24" 1 PIECE	Linear Feet	35	1750 lbs

Product Information



Fluid Absorbed	Oil-based liquids, hydrocarbons
Color	Brown
Absorbency	6 times its weight
Configuration	Pad
Material	Plant Fiber
Weight	Varies by Size

Features

- Biodegrades after absorbing spills
- Absorbs 6x's its weight
- Extremely durable; can be driven over by frac trucks, etc.
- Does not rip -- even when saturated with oil
- Can be transported from one job to the next
- Can be left to biodegrade where allowed by law
- Prevents oil from ever hitting the ground.
- Lasts for months or until fully saturated
- Cost and labor efficient
- Does not absorb water/floats on water
- Requires no sprinkling or sweeping up
- Uses include: well-servicing, vacuum and frac trucks, erosion, safety, and more

"I have used Biopad in numerous situations on different sizes and types of spills, and it has been extremely successful every time. It WORKS, and is a tremendous cost-saver due to reuse and no disposal costs."

- Joe Harris, Well-Site Supervisor

Product #	Description	Absorption Capacity	Unit	Quantity	Shipping Weight
832	80" x 50'	384 lbs per 1 roll	Roll	1	64 lbs
833	80" x 10' Wellhead Mats	90 lbs per 1 mat	Case	2	30 lbs
836	59" X 50' Railroad	276 lbs per 1 roll	Roll	1	46 lbs
837	2' x 4' Mechanics	90 lbs per 1 mat	Case	50	20 lbs
838	80" x 10' Wellhead Kit	90 lbs per 1 mat	Case	1	30 lbs
839	18" x 18" Pads	2.4 lbs per 1 mat	Bundle	50	20 lbs
845	4' x 50'	246 lbs per 1 roll	Roll	1	41 lbs