

Carpenteria

CNPS SEQUOIA CHAPTER



June 2016

www.cnps-sequoia.org

FIELD REPORT

--Jane Pritchard

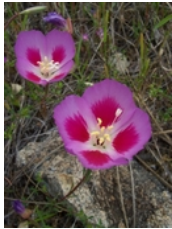
The Tuesday group went to Miami Mountain on May 24 west of Oakhurst off Highway 49. The sun was hot when we got there so I left my jacket in the car. A fantastic display of flowers lined the road to the lookout tower on top. White and pink Mariposa lilies (*Calochortus* spp.) and other flowers were tall and abundant. After about a mile and a half, white fairy lanterns (*Calochortus albus*) grew profusely on the roadsides. That was my first sighting of them in the wild. One had a green capsule that was a very interesting 3-sided affair.

-*Calochortus albus*-



© 2001 Jeff Abbas

By this time it had become overcast and was blowing a gale at the top. We ate on the lee side of the tower and watched the dark clouds covering the mountain tops around us and the rain approaching up the valley. We didn't waste much time eating and hotfooted it down to the car. Sprinkles started shortly before the end. The sky opened up just after we got inside.



-*Clarkia amoena*-
© 2006 Matt Below

I didn't have the camera with me the first time so a friend and I returned there on May 31. What a difference a hot week makes. Wild oats had grown taller than my head and turned brown. Many flowers had mainly gone to seed. Madia was closed up except for a few in the shade. Mariposa lilies were still going strong. Twining brodiaea (*Dichelostemma volubile*), farewell-to-spring (*Clarkia amoena* and possibly *C. rubicunda*), and winecup clarkia (*Clarkia purpurea*) had bloomed.

My friend was hot, the road was steep, and face flies were swarming, but I kept her going to the first patch of white fairy lanterns. They were loaded with capsules; a fresh flower was a rarity. I continued on but decided I couldn't leave her alone among the bears and other wild animals. While I was deleting images from my camera to make room for pictures on the way back down, the battery light started flashing. So I didn't get photos after all, but my friend did.

S.H.A.R.E.S PROGRAM

Help us raise money when you shop at Save Mart, Lucky, or Food Maxx!!!

We were participating in the old S.H.A.R.E.S program, which ended March 31, 2016; however, the old program no longer recognizes the S.H.A.R.E.S cards. Our chapter had to enroll under the new escrip.com/shares program beginning April 1, 2016. It requires potential supporters to enroll on-line. Don't worry....it is easy to enroll with your email and phone number.

To create your account and support the CNPS Sequoia Chapter go to <www.escrip.com>. When selecting organizations to support, we are listed as "Sequoia Chapter Calif Native Plant Soc." We would be very appreciative of your support.

If you do not have a computer to enroll or have questions, please call Marian at 559/226-0145 for assistance.

Thank you in advance for taking the time to enroll on-line and for your participation. And, thank you for being a member of our chapter!



FREE IMAGES UK



Upcoming Events and Classes

•July 30-31 Rare Plant Hike(s)

Location: Patterson Mountain

Chris Winchell will lead hikes on Patterson Mountain located between Shaver Lake and Wishon Reservoir off of McKinley Grove Road.

- The area boasts truly rare plants.
- Saturday will take in several hotspots and be a more informative wildflower hike.
- Sunday we will allow participants to botanize on relatively unexplored parts of the mountain, more in line with a rare plant treasure hunt.
- You may return home on Saturday after the hike or stay overnight for both days.
- You are responsible for your own hiking gear, camping gear, food, etc.

Details: Further information will be given in the next newsletter.

•July 10 Northern California Botanists (NCB) Symposium—Call for Papers for 2017

Northern California Botanists is offering you the opportunity to share your knowledge about Good News regarding northern California plants by giving a talk at the NCB 2017 Symposium in Chico, CA on January 9-10.

- Four or five talks will be selected for this session. Twenty minutes each (15 minutes for the talk and 5 minutes for questions after the talk).
- Talks can be offered by non-California botanists, but topics must have a strong northern California connection.
- Send several sentences describing your subject by July 10, 2016 to LJaneway@csuchico.edu.
- An abstract and speaker bio will be requested later for the selected talks.

Symposium Details: <http://www.norcalbotanists.org/>

•Look for CNPS workshops at the following website:

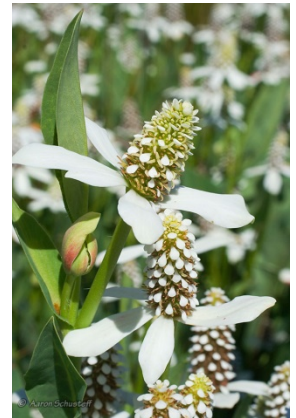
<http://www.cnps.org/cnps/education/workshops/>

CHINA CREEK REPORT

May 2016 work party

--Warren Shaw

It was an absolutely gorgeous day at the China Creek Park: temperatures in the 70's, light breezes, yerba mansa (*Anemopsis californica*) in glorious full bloom in both flower and scent, and wild roses past their prime but still pinkly pretty. The brush pile by the gate was alive with quail when we first got there, and later, while in conversation with Hank by the gate, we saw a deer cross the road behind him.



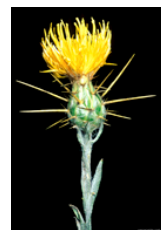
-*Anemopsis californica*-
© 2008 Aaron Schusteff

Unhappily, the work we needed to do most was the repetitive drudgery of hunting and digging invasive exotic weeds, and we all found plenty to do.

At break we discussed the fencing problems that, for the moment, are preventing grazing in the south area, and while we weren't able to come up with a simple solution, we did review the options thoroughly, and concluded we had a lot to think about.

We finished the day by checking the trail, and found all the signs intact and the trail in good shape to walk, though we did note some patches of yellow star thistle (*Centaurea solstitialis*) we need to deal with in that southwest area of the Park.

-*Centaurea solstitialis*-



© 2009 Barry Rice

June's work party will be Saturday, June 18, from 8-12. We will, once again, concentrate mainly on weeds—not inspiring work, but really important to get to before they go to seed. Please join the fight if you can.

China Creek Park is located on the west side of Centerville, 16 miles east of Fresno on Highway 180. To get there, drive east on Kings Canyon/ Highway 180, 16.5 miles to Centerville. Turn right (south) on Smith Road and drive 0.2 miles to Rainbow Drive. Continue on Smith Road down the small road 0.5 miles to the Park gate at the end of the road.

For more information call (559-451-1256) or email [<warshaw1955@gmail.com>](mailto:warshaw1955@gmail.com).

**SEQUOIA CHAPTER OFFICERS*
AND COMMITTEE CHAIRS**

Membership

John LuValle

Thanks to new and renewing members.

If you require corrections or additions to your membership information, contact John LuValle at jluvalle@mcn.org.

The Sequoia chapter serves Fresno, Madera, and Kings counties.

The IRS considers dues in excess of \$12 per year and all gifts to CNPS as tax deductible. Renew your CNPS membership online using a credit card. As an option, renew automatically year after year. It is quick, easy, and convenient, and reduces renewal-mailing costs. Visit www.cnps.org and click on the JOIN button.


Next Newsletter: July 2016

Send newsletter contributions, corrections, or suggestions to Laura Castro at lacastror@outlook.com.


The deadline for the next newsletter is **Friday, July 1.**




- *President** open
- *Vice-Pres.** Warren Shaw 559/451-1256 (h)
warshaw1955@gmail.com
- *Secretary** Marian Orvis 559/226-0145 (h)
mforvet@comcast.net
- *Treasurer** Jeanne Larson 559/243-0815 (h)
jrjlars@aol.com
- Membership** John LuValle jluvalle@mcn.org
- Field Trips** Jane Pritchard 559/765-9954
xxiii_xx@yahoo.com
- Newsletter Editor** Laura Castro 559/643-6012
lacastror@outlook.com
- Hospitality** Madeleine Mitchell 559/638-2784 (h)
madeleine43@comcast.net
- Horticulture** open
- Education** Warren Shaw (See Vice-President)
- Rare Plant** Jane Pritchard (See Field Trips)
- Plant Sale** Thelma Valdez (see Webmaster)
- Conservation** Jeanne Larson (see Treasurer)
- Directors at Large** Michele LuValle luvalle@mcn.org
Belinda Gilbert belinda@sti.net
- Webmaster** Thelma Valdez 559/323-8962 (h)
yucca37tv@yahoo.com



JOIN



THE CALIFORNIA NATIVE PLANT SOCIETY



RENEW

Membership includes the quarterly CNPS journal, *Fremontia*; the quarterly *Bulletin* which gives statewide news and announcements of activities and conservation issues; and our chapter newsletter, *Carpenteria*.

I wish to affiliate with the Sequoia Chapter.

Name: _____

Address: _____

City: _____

State: _____ Zip: _____

<input type="checkbox"/> Student, Limited Income	\$25
<input type="checkbox"/> Individual	\$45
<input type="checkbox"/> Family, Group, or Library	\$75
<input type="checkbox"/> Plant Lover	\$100
<input type="checkbox"/> Patron	\$300
<input type="checkbox"/> Benefactor	\$600

Make your check payable to "CNPS" and mail with this form to:

New Member

Renewing Member

California Native Plant Society
2707 K Street, Suite 1
Sacramento, CA 95816-5113

The California Native Plant Society is a statewide nonprofit organization of amateurs and professionals with a common interest in California's native plants. The mission of the Society is to increase understanding and appreciation of California's native plants and to preserve them in their natural habitat through scientific activities, education, science, and conservation.

CARPENTERIA

June 2016

CALIFORNIA NATIVE PLANT SOCIETY SEQUOIA CHAPTER

c/o Jeanne Larson ♦ 3457 Redlands ♦ Fresno, CA 93726

GARDEN NOTES

--*Jeanne Larson*

-*Brodiaea elegans*- ©2014 Robert Sikora



during the summer. If soil is heavy and of high water holding capacity, bulbs will rot if left in soil that is watered over the summer.

There is a long list of native bulbs that can be grown in containers and be put aside without water in the summer. They will be discussed at a later time. The harvest brodiaea (*Brodiaea elegans*) has finished its brilliant blue accent in my garden. About the time brodiaeas start to bloom, the foliage lies flat and is turning brown. A little mulch can cover these drying leaves so the eye is directed to the inflorescence. Since my soil is very sandy, the harvest brodiaea survives with the sprinkling the yard receives for other species



-*Triteleia laxa*- ©2011 Vernon Smith

Ithuriel's spear (*Triteleia laxa*) is easy to grow in pots and survives best if moved to a dry, shaded, inconspicuous spot in the garden for the summer. It has much narrower leaves than its relative harvest brodiaea, and the blooms on the "spears" wave gently with a breeze.



Elegant Clarkia
(*Clarkia unguiculata*)



Clarkia
(*Clarkia spp.*)



Farewell to Spring
(*Clarkia spp.*)



Clarkia
(*Clarkia spp.*)



Redspot Clarkia
(*Clarkia speciosa ssp. polyantha*)



Redspot Clarkia
(*Clarkia speciosa ssp. polyantha*)



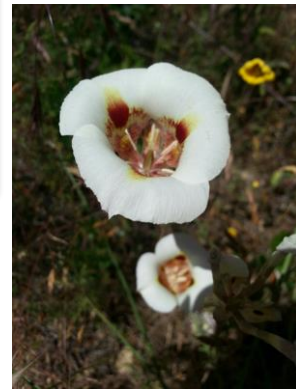
Blue Curls
(*Trichostema lanceolatum*)



Wind Poppy
(*Papaver heterophyllum*)



Pretty Face
(*Tritelia tixioides*)



Mariposa Lily
(*Calochortus venustus*)



California Guara
(*Clarkia heterandra*)



June 2016
Sequoia
Chapter
CNPS



Mexican Manzanita
(*Arctostaphylos pungens*)



White Fairy Lantern
(*Calochortus albus*)

Eileen Bennett: California Guara (Miami Mountain)
Tom Zimoski: Elegant Clarkia, Clarkia polyantha, Clarkia spp, Wind Poppy (San Joaquin River Gorge near bridge)
JoungMin Sur: Farewell-to-Spring, Mariposa Lily, Pretty Face, White Fairy Lantern (Miami Mountain)
Thelma Valdez: Blue Curls, Mexican Manzanita, Buckwheat and bee (at home)