

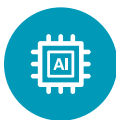


Full-colour Camera

View Dark in Colour



24/7 Colour Monitoring



Up to 98% AI Accuracy at Night



Excellent Video Quality in Darkness

Full-colour

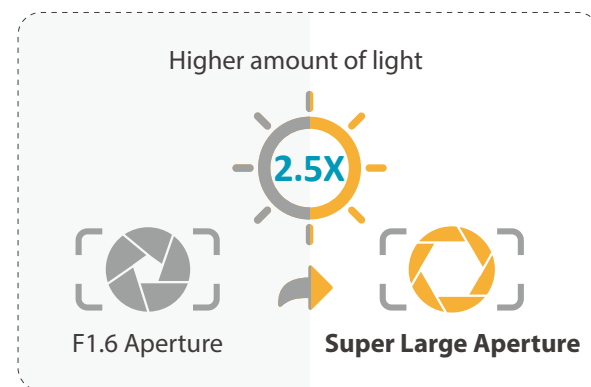
Overview

Dahua Technology's full-colour camera captures vivid colour information even in low-light conditions. It effectively extracts the colour features of scenes – be it human, vehicle or details – in places with high crime rate such as a park at night or a dark alley, providing great help to police officers during the evidence obtaining procedure. In addition, the full-colour camera can also work with AI functions to further enhance the probability and accuracy of target recognition and feature extraction.

Full-colour Key Technologies

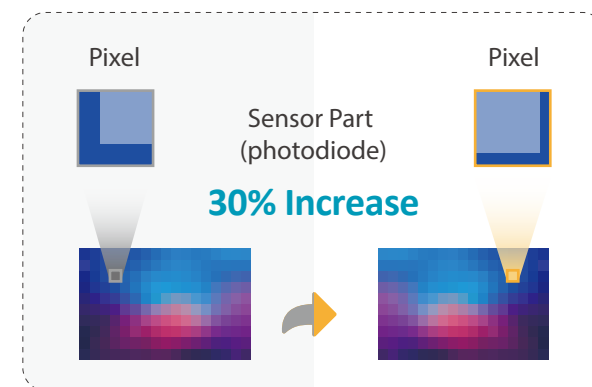
Large Aperture Lens

- Max. aperture **F1.0**, **2.5x** light v.s. F1.6



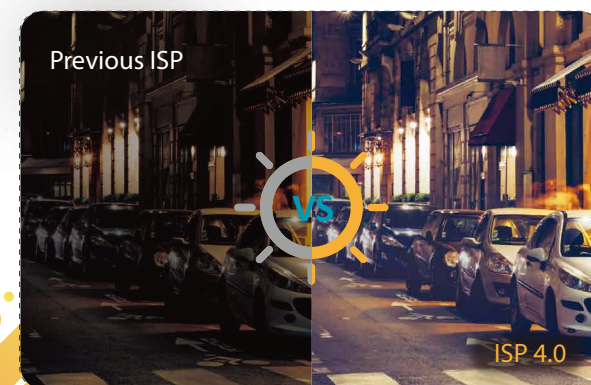
High Performance Sensor

- **30%** photosensitive capacity increase



Advanced ISP

- Dahua **ISP 4.0** greatly improves Signal to Noise Ratio and colour reproduction



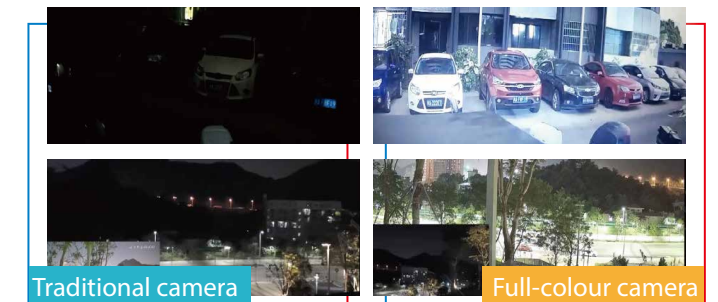
Warm Light

- Radiance **40%** below EU standards



Full-colour Effect Contrast

Dahua full-colour camera present a more vivid, colour image in the dark, thus capable of 24/7 colour monitoring that can accurately identify vehicle and objects in low light conditions.



Features

- 24/7 Colour Monitoring**
 Dahua Key technologies make your world colour all the time.
- Up to 98% AI Accuracy at Night**
 Full-colour enabled stable performance even at night.
- Excellent Video Quality in Darkness**
 Enables accurate people and objects identification even in low light conditions.

AI Function (Full-colour + SMD)



False Alarm Filter Even at Night

- Filters out leaves, light and other disturbing objects
- AI accuracy rate is the same with daytime, up to 98%



Quick Target Search

- Human and vehicle search options
- Saves event retrieval time

AI Function (Full-colour + AI Search)

Colour Smart Search

- Can be achieved through integration with recorder

Multidimensional Search

- Human / vehicles / non-motor vehicles.
- Top colour & bottom colour / car colour & plate colour

Improve Retrieval Efficiency

- Improves efficiency to reduce labor cost



Application Scenario

Case: Road is dark at night

Value:

- 24/7 colour monitoring with brighter image.
- Serves as a street lamp to reduce construction cost.
- Warm light gives a sense of security.



Case: When intrusion happens but there's no one in the house.

Value:

- 24/7 colour monitoring to guard courtyard well.
- Extract colour information of intruders to help the police solve the case.



Case: Dark environment during film screening. It is necessary to ensure security when so many people get together.

Value:

- Perfect image that helps see clearly in a more detailed way.
- Provides colour information to help the police solve the case quickly.



Case: Dark environment in a parking lot.

Value:

- Focus on vehicle and human colour feature.
- Vivid details are available.



Full-colour Product Family

- IP Camera

IPC 5 Series(WizMind)



2MP Warm Light

DH-IPC-HFW5241TP-AS-LED



2MP Warm Light

DH-IPC-HDW5241TMP-AS-LED



2MP No Light

DH-IPC-HFW5241TP-ASE-NI



2MP No Light

DH-IPC-HDBW5241RP-ASE-NI



4MP Warm Light

DH-IPC-HFW5442TP-AS-LED



4MP Warm Light

DH-IPC-HDW5442TMP-AS-LED



4MP No Light

DH-IPC-HFW5442TP-ASE-NI



4MP No Light

DH-IPC-HDBW5442RP-ASE-NI

IPC 3 Series(WizSense)



2MP Warm Light

DH-IPC-HFW3249EP-AS-LED



2MP Warm Light

DH-IPC-HDW3249TM-AS-LED



2MP No Light

DH-IPC-HDBW3249EP-AS-NI



5MP Warm Light

DH-IPC-HFW3549EP-AS-LED



5MP Warm Light

DH-IPC-HFW3549EP-AS-LED



5MP No Light

DH-IPC-HDBW3549EP-AS-NI

IPC 2 Series



2MP Warm Light

DH-IPC-HFW2239SP-SA-LED-S2



2MP Warm Light

DH-IPC-HDW2239TP-AS-LED-S2



4MP Warm Light

DH-IPC-HFW2439SP-SA-LED-S2



4MP Warm Light

DH-IPC-HDW2439TP-AS-LED-S2

• HDCVI Camera

HAC 1239 Series



2MP Warm Light

DH-HAC-HFW1239TP-A-LED



2MP Warm Light

DH-HAC-HDW1239TP-A-LED

HAC 1509 Series



5MP Warm Light

DH-HAC-HFW1509TLMP-A-LED



5MP Warm Light

DH-HAC-HDW1509TP-A-LED

* Design and specifications are subject to change without notice.

Ver.1, Feb. 2020

DAHUA UK & IRELAND

Quantum House, 60 Norden Road, Maidenhead, Berkshire SL6 4AY
Tel: +44 (0) 1628 613 500
sales.UK@dahuatech.com
support.UK@dahuatech.com

