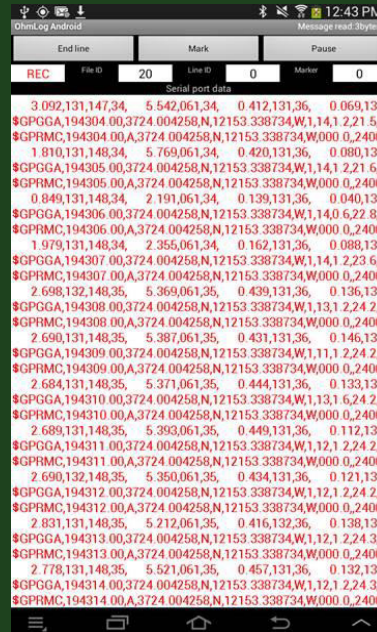
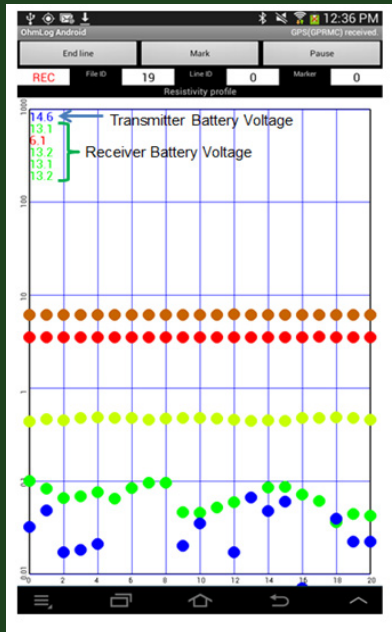


OhmMapper Real-Time Windows and Android Software for Data Logging and Processing

Log OhmMapper data to Android Device via Bluetooth connection

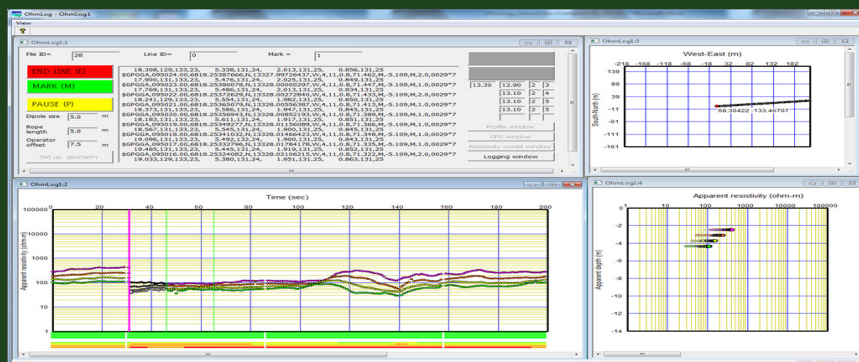


- Real time display of apparent resistivity data
- Monitor receiver and transmitter battery voltage to minimize system downtime

- Uses device's internal GPS to map surveys
- GPGGA and GPRMC provide ~1m accuracy in areas with SBAS coverage

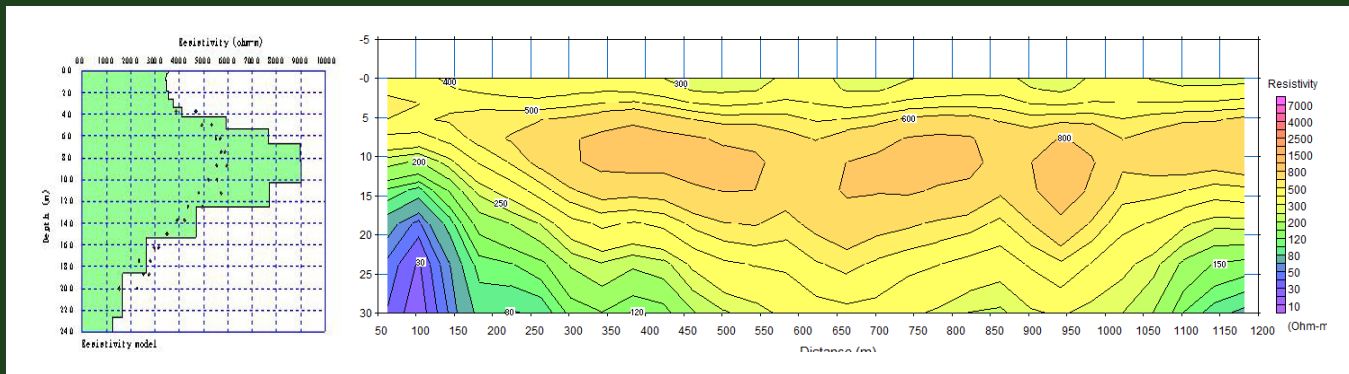
- Mapped view shows survey positions
- Vector displays real time velocity and direction information

Log OhmMapper data to Windows PC via serial or USB cable



Real-time display of apparent resistivity, map position, and battery voltage. Uses external GPS device, ideal for applications needing RTK positioning.

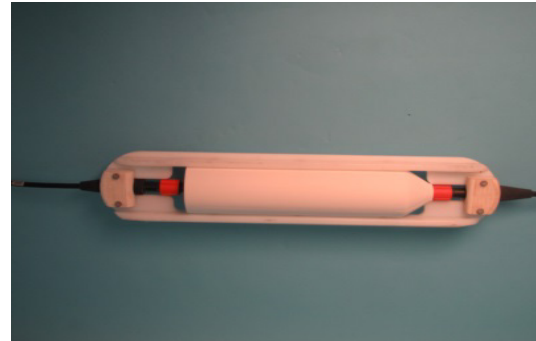
OhmImager for Windows PC



1-D resistivity inversion and 2-D resistivity cross section maps.
Simple to use editing and processing software to analyze OhmMapper data.



Data logging box connected to serial cable
Can also be used with a Bluetooth Adaptor
to connect to an Android phone or tablet.



New OhmMapper Connector Protectors
Ideal for towing the OhmMapper over
rough surface conditions.

GEOMETRICS INC.

GEOMETRICS EUROPE

GEOMETRICS CHINA

2190 Fortune Drive, San Jose, California 95131. USA

Tel: 408-954-0522 - Fax: 4-8-954-0902 - Email sales@geometrics.com

20 Eden Way, Pages Industrial Park, Leighton Buzzard LU7 4TZ, UK

Tel: 44-1525-383438 - Fax: 44-1525-382200 - Email: chris@geometrics.com

**Laurel Technologies, Ste 1807-1810, Kun Tai Int'l Mansion #12B,
Chaowai St., Beijing 100020, China**

Tel: 86-10-5879-0099 - Fax: 86-10-5879-0989 -

Email: laurel@laureltech.com.cn



GEOMETRICS

Innovation • Experience • Results