

# MicroEel

## Analog Solid Seismic Streamer



The MicroEel is a small-diameter solid streamer designed for high-resolution engineering reflection surveys. It plugs right into the Geode. The 100% solid design minimizes or eliminates most types of streamer-borne noise, resulting in some of the cleanest records you will ever lay your eyes on. Large-bandwidth polymer hydrophones enable the recording of extremely high frequencies, making the MicroEel a natural companion to small sources like sparkers, boomers, and even bubble pulsers.

The MicroEel is specifically designed to withstand the rigors of commercial surveys, and has the performance and reliability that our customers have come to respect. Stay at sea longer, and collect high-resolution data where other streamers cannot go.

The MicroEel is backed and supported by Geometrics, now over 50 years old, and our worldwide service center network. Contact us today to find out how the MicroEel can work for you.

### FEATURES & BENEFITS

- **12-24 channels** - Conduct multifold high-resolution surveys with unparalleled signal-to-noise.
- **100% solid construction** - Say goodbye to bulge waves inherent in liquid-filled streamers.
- **Non-flammable** - Easily shipped by airplane.
- **Lightweight and compact** - Deploys easily by hand or from a small winch.



## HYDROPHONE

**Sensor Type:** Proprietary Polymer.

**Frequency Response:** 10 Hz to 1,500 Hz  $\pm 1.0$  dB.

**Capacitance:** 7.2 nF per element at 22° C.

**Sensitivity (Nominal):** -198.3 dB re 1 V/1  $\mu$ Pa.

**Sensitivity to Acceleration:** < -70 dB re 1 V/msec<sup>-1</sup>.

## PREAMPLIFIER

**Type:** Ultra-low noise differential.

**Gain:** 6 dB.

**Low Corner Frequency:** -3 dB at 10Hz.

**Current:** 11 mA per channel.

**Power:**  $\pm 12$  V DC MicroEel Battery Pack (topside).

## ACTIVE SECTION

**Channels:** 12 or 24; other counts available\*.

**Hydrophones per Group:** 1-4.

**Group Aperture:** 0 or 0.22 m; up to 1 m maximum\*.

**Group Interval:** 3.125 m or 6.25 m; other intervals available to 1 m minimum\*.

**Flotation Material:** Polyurethane-based.

**Outside Diameter:** 38.1 mm.

**Weight (in air):** 1.0 kg/m.

**Bend Radius:** 0.46 m.

**Strength Member:** Kevlar center stress core.

**Working Load:** 182 kg.

**Breaking Strength:** 909 kg.

\*Please contact the factory to discuss your requirements. Specifications subject to change without notice for product improvement/development. Depending on the end user's location, the MicroEel may require a US Department of Commerce export license.

## DECK AND TOW CABLES

**Type:** Multi-conductor with polyurethane jacket.

**Length (Maximum Total):** 400 m (including active section).

**Deck Termination:** Y-type with one 61-socket connector (or 27-socket connector), one 4-pin connector (topside); one 55-socket waterproof connector.

**Tow:** One 55-pin waterproof connector.

**Outside Diameter:** 13.5 mm.

**Weight:** 0.15 kg/m.

**Bend Radius:** 0.46 m.

**Strength Member:** Kevlar center stress core.

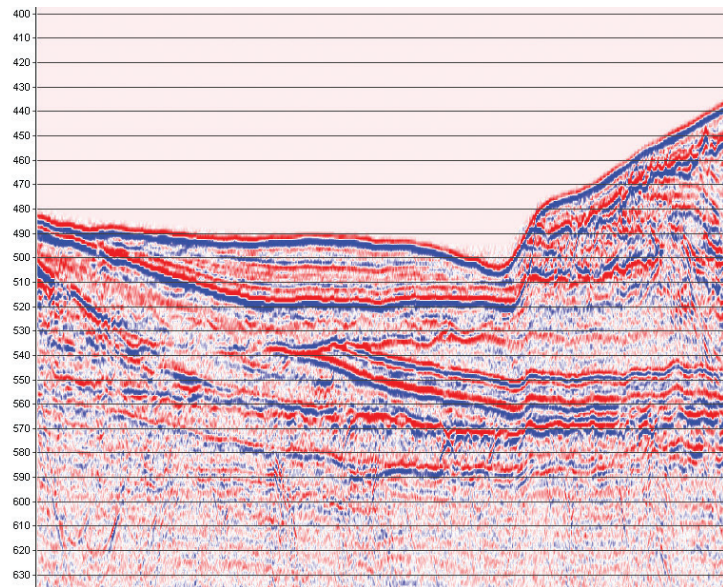
**Working Load:** 182 kg.

**Breaking Strength:** 909 kg.

## TEMPERATURE:

**Operating Range:** -10°C to +60°C (-15°F to +140°F).

**Storage Range:** -40°C to +60°C (-40°F to +140°F).



MicroEel data acquired in Straits of Magellan, Chile

Specifications subject to change without notice. MicroEel DS\_v1 (1021)