

PORT AUTHORITY.

Port Authority® Ladies Short Sleeve SuperPro™ Oxford Shirt. L659



Look your best in a tried-and-true oxford that performs. Proven in independent lab tests to resist and release stains, our SuperPro Oxford has a soft hand and a wrinkle-free finish to keep you looking neat and professional all day long.

- 4.6-ounce, 60/40 cotton/poly
- Open collar
- Bust darts
- Back shoulder pleats
- Pearlized buttons
- Left chest pocket
- Two-button cuffs

CARE INSTRUCTIONS

Machine wash cold with like colors, ony non-chlorine bleach when needed. Tumble dry low. Warm iron if needed.

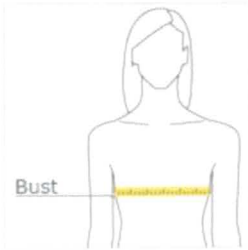


front



back

HOW TO MEASURE




**BUST**  
Measure under the arm and around the fullest part of the bust with arms down, keeping tape horizontal.

SIZE CHART

|      | XS    | S     | M     | L     | XL    | XXL   | 3XL   | 4XL   |
|------|-------|-------|-------|-------|-------|-------|-------|-------|
| Size | 2     | 4/6   | 8/10  | 12/14 | 16/18 | 20/22 | 24/26 | 28/30 |
| Bust | 32-34 | 35-36 | 37-38 | 39-41 | 42-44 | 45-47 | 48-51 | 52-55 |


COLOR INFORMATION



Black  
PMS NTR BLACK



Navy  
PMS 3581C



Oxford Blue  
PMS 3506C

White

**Ladies Long Sleeve Value Denim Shirt. LSP10**



With sturdy construction, a generous cut and soft garment washing, our Value Denim shirt won't stretch your budget.

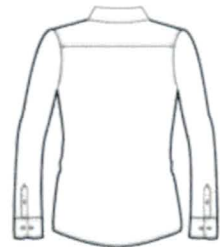
- 6.5-ounce, 100% cotton
- Double-needle stitching throughout
- Traditional, relaxed look
- Open collar
- Horn-tone buttons
- Rounded adjustable cuffs
- Due to special finishing process, colors may vary.

**CARE INSTRUCTIONS**

Machine wash cold with like colors. Do not bleach.  
Tumble dry low. Warm iron if necessary.

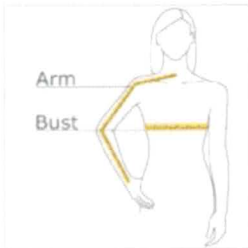


front



back

**HOW TO MEASURE**



**BUST**

Measure under the arm and around the fullest part of the bust with arms down, keeping tape horizontal.

**ARM**

Place hand on hip. Start at the center of the back of the neck and measure across the shoulder, to the elbow, and then down to the wrist.

**SIZE CHART**

|      | XS          | S               | M           | L           | XL          | XXL         | 3XL             | 4XL             |
|------|-------------|-----------------|-------------|-------------|-------------|-------------|-----------------|-----------------|
| Size | 2           | 4/6             | 8/10        | 12/14       | 16/18       | 20/22       | 24/26           | 28/30           |
| Bust | 32-34       | 35-36           | 37-38       | 39-41       | 42-44       | 45-47       | 48-51           | 52-55           |
| Arm  | 30 - 30 3/4 | 30 3/4 - 31 1/2 | 31 1/2 - 32 | 32 - 32 1/2 | 32 1/2 - 33 | 33 - 33 3/8 | 33 3/8 - 33 3/4 | 33 3/4 - 34 1/2 |

**COLOR INFORMATION**



Faded Blue\*



Ink Blue\*



With sturdy construction, a generous cut and soft garment washing, our Value Denim shirt won't stretch your budget.

- 6.5-ounce, 100% cotton
- Double-needle stitching throughout
- Traditional, relaxed look
- Open collar
- Horn-tone buttons
- Due to special finishing process, colors may vary.

**CARE INSTRUCTIONS**

Machine wash cold with like colors. Do not bleach.  
Tumble dry low. Warm iron if necessary.

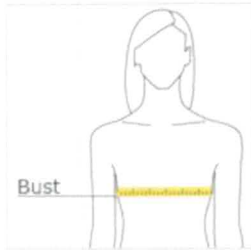


front



back

**HOW TO MEASURE**

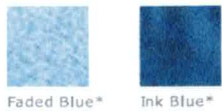


**BUST**  
Measure under the arm and around the fullest part of the bust with arms down, keeping tape horizontal.

**SIZE CHART**

|      | XS    | S     | M     | L     | XL    | XXL   | 3XL   | 4XL   |
|------|-------|-------|-------|-------|-------|-------|-------|-------|
| Size | 2     | 4/6   | 8/10  | 12/14 | 16/18 | 20/22 | 24/26 | 28/30 |
| Bust | 32-34 | 35-36 | 37-38 | 39-41 | 42-44 | 45-47 | 48-51 | 52-55 |

**COLOR INFORMATION**



Faded Blue\*   Ink Blue\*