

# Waldo Mini

M2MD-EM-0001

Light, small & super energy efficient

Easy snap off case for quick AAA battery replacement

Long battery life



Device status

Multiple location sensing technologies

Designed and manufactured in the USA

## Improves Insights

Asset tracking provides better asset utilization

Accurate and real-time sensor data drives better management and decision-making

## Increases Profits

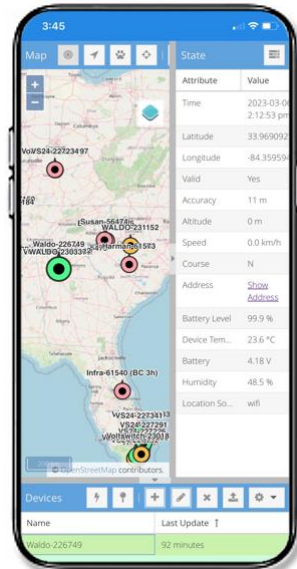
Accurate asset management drives efficiencies & cost savings

Increases asset lifespan & labor productivity

Identifies ghost assets and prevents loss

Drives new revenue generating opportunities through analytics

## Features



### Intelligent Device

GPS, cell tower triangulation & Wi-Fi location

High performance edge sensor alerting

Periodic or movement-based location reports.

Optional 'on-demand location'

### World-class SaaS platform

High availability SaaS platforms in multiple AWS availability zones

Simple & secure APIs for customer integrations

### Energy Efficiency

Extreme battery life through proprietary selective location determination algorithm

Patented next generation wireless IoT connection, power management and security technology

### Cutting edge

Wireless CAT M1 modem/processor

High performance GPS & cellular antennas

Designed, developed and manufactured in the USA



## Location Connectivity

- GPS fast location
- Wi-Fi location assistance
- Wi-Fi geofencing
- Cell tower triangulation

## Sensors

- Accelerometer – high performance 3-axis for movement detection

## Hardware

- Nordic Semiconductor NRF9160 wireless CAT M1 modem/processor
- High performance GPS & cellular antennas

## Batteries

- Patented technology for ultra-low power and ultra-long battery life
- Up to 3+ years with once daily location updates
- Supports user-replaceable 'off-the-shelf' AAA alkaline batteries (lithium optional)
- Easy snap off cover for quick & simple user battery replacement

## Software Integration

- Easy integration with virtually any front-end using AWS SQS
- Over-the-air (OTA) Software upgradeable

## Additional Information

- Lowest power wireless chipset
- Size: 1.7" Width x 2.8" Length x 1" Height

## Made in the USA

- Designed, developed and manufactured in the USA
- Part# M2MD-ETM-0001