




# HealthifyMe.

Your AI-powered healthcare assistant

Rishik, Sahil, Sangeth, Luca

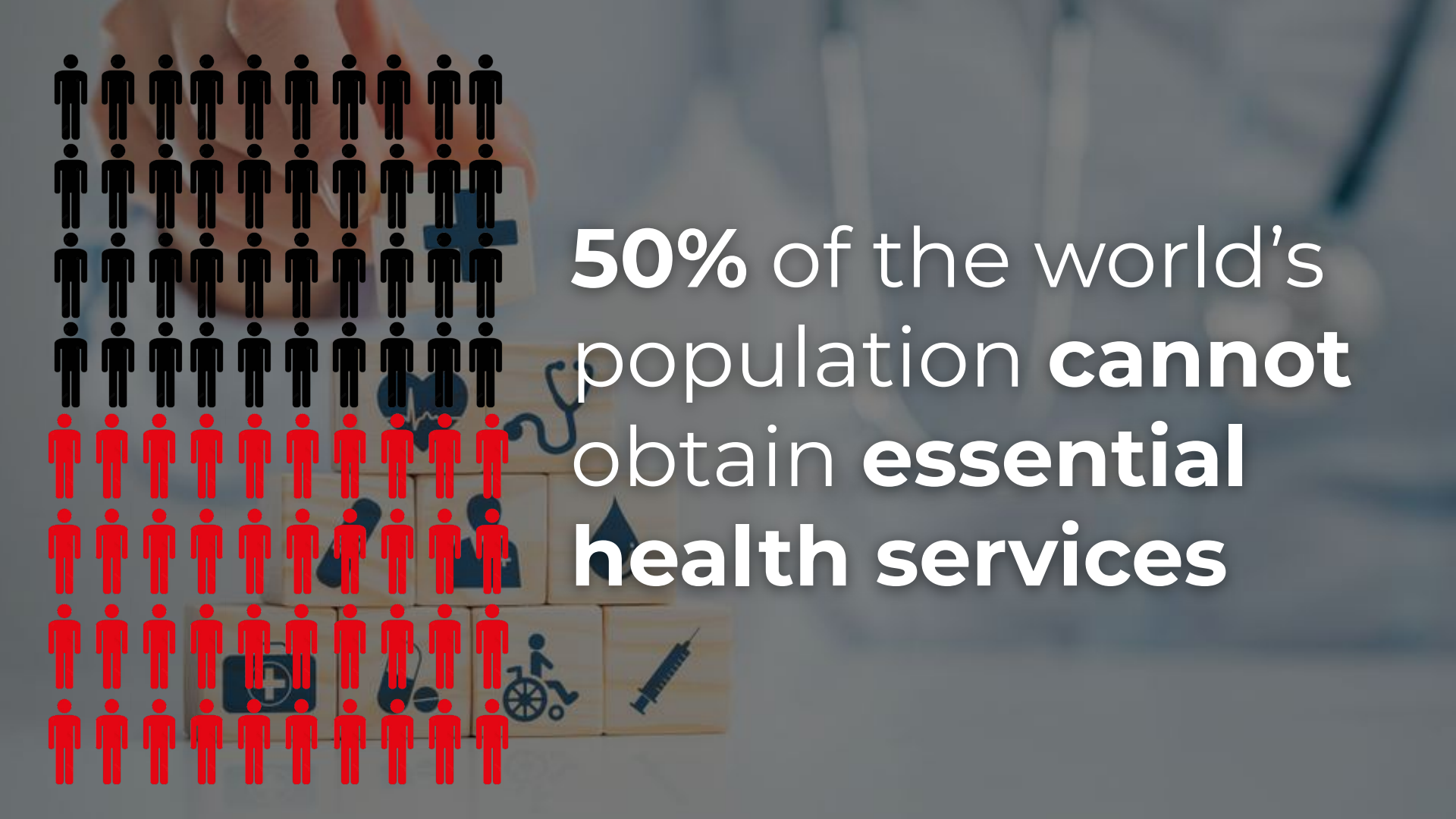




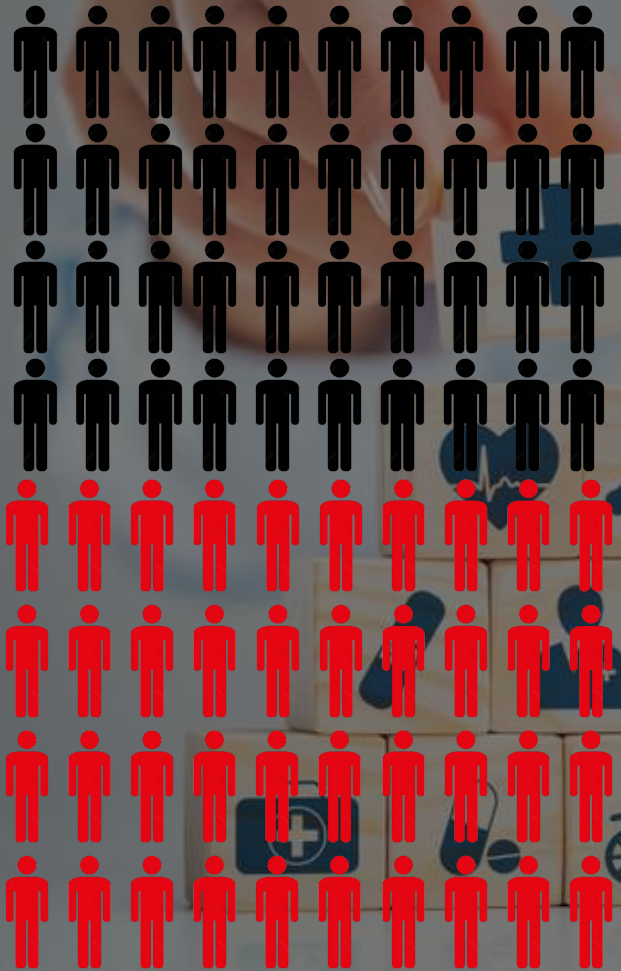
46% of cancer is not  
detected until **stage 3**

**You** might know  
someone, who has  
**cancer**





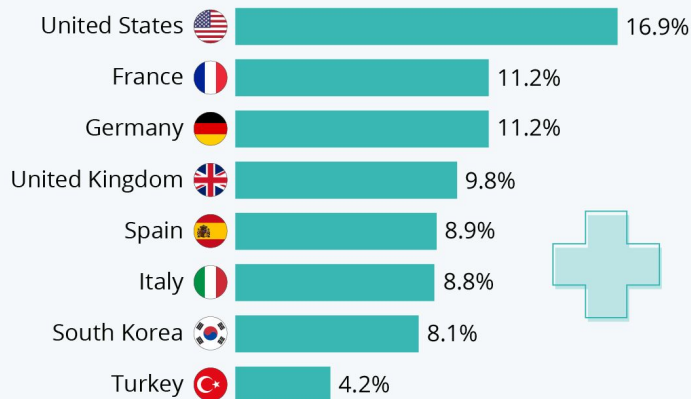
50% of the world's  
population **cannot**  
obtain **essential**  
**health services**



# Healthcare is too expensive.

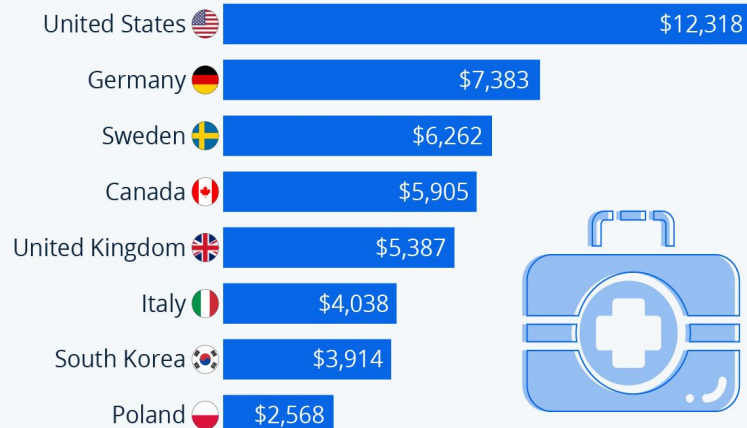
## How Much Do Countries Spend On Their Health Systems?

Health expenditure as a percentage of GDP in 2018



## The U.S. Has the Most Expensive Healthcare in the World

Per-capita health expenditure in selected countries in 2021





CHANGE IS **HERE**.  
IT'S HAPPENING **NOW**.



# Introducing



# HealthifyMe

# What's different?



## HealthifyMe will improve:

- Cost
- Time
- Accessibility
- Interactiveness



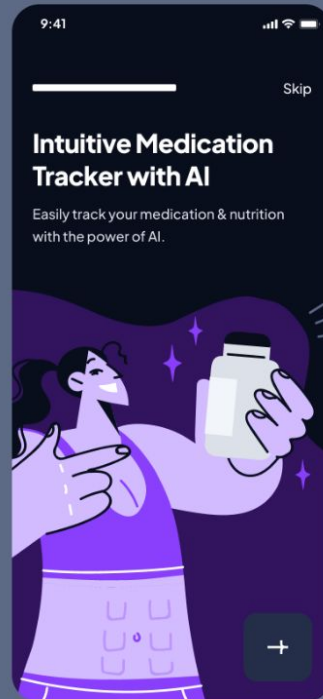
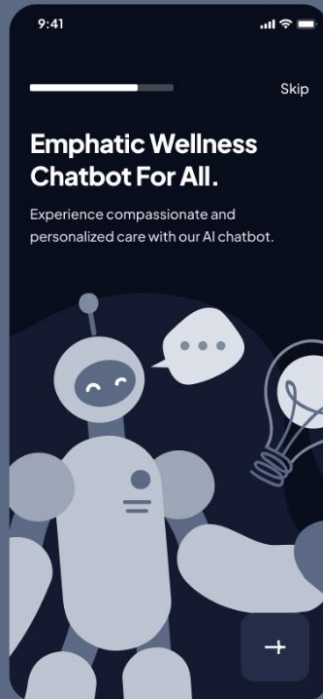
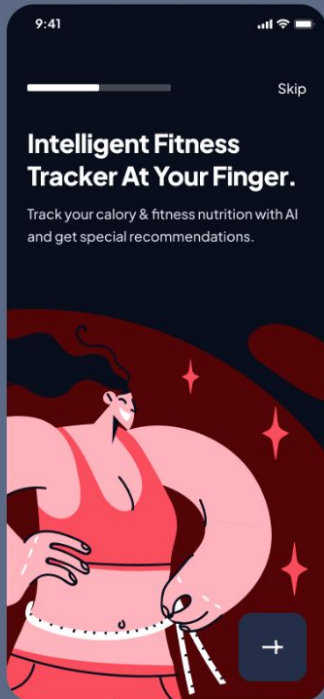
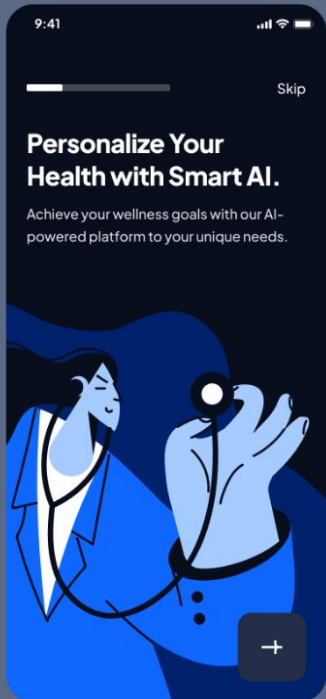




# How does this work?



# Welcome Screen



# Onboarding Health Assessment



9:41 100% Skip

What is your health goal for the app?

☐ I want to get healthy

☒ I want to lose weight

☐ I want personalized health

☐ Just trying out the app

Prefer to skip this. →

Continue →

9:41 100% Skip

What is your Gender?

Please select your gender for better personalized health experience.

☒ I Am Male

Continue →

9:41 100% Skip

What is your weight?

lbs kg

140 lbs

130 150

Continue →

9:41 100% Skip

What is your age?

17 18 19 20 21

Continue →

9:41 100% Skip

What's your official blood type?

A B AB O

A+

+ -

Continue →

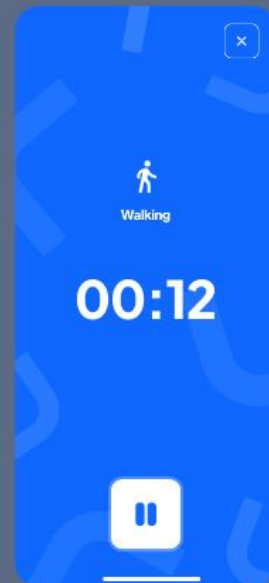
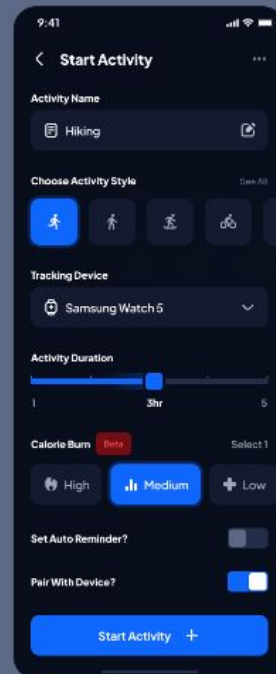
9:41 100% Skip

What is your current fitness level?

Level 3 (2-3x Exercise/Week)

Continue →

# Fitness Tracker











HealthifyMe.