

Center that CARES X HCDC



Thursday, August 08, 2024

Agenda



Purpose

Introductions

Problem

Review of History and
Evolution of CARES

Plan

Hamilton House Project

Partnership

Action items and next
steps



Who We Are

Now entering the 24th year of operation, CARES has supported more than 3200 students and their families. CARES offers programs for pre-k through grade 12 and beyond. We are committed to uplifting and transforming the lives of people of all ages through education, recreation, cultural enrichment, and thoughtful guidance.



TWENTY-FOUR YEARS OF BUILDING COMMUNITY ASSETS

2000 CARES Opens its Doors

With a staff of four and a budget of approximately \$100,000 CARES forged strategic partnerships to serve children and adults through recreation, education and services in the Hill District and surrounding communities.

2015 Jeron X. Grayson Center Opens

CARES purchased the former Ozanam Community Center in the Hill District, and renovated the 14,000 sq. ft. building with an emphasis on middle and high school students and families. The space also serves as an event space.

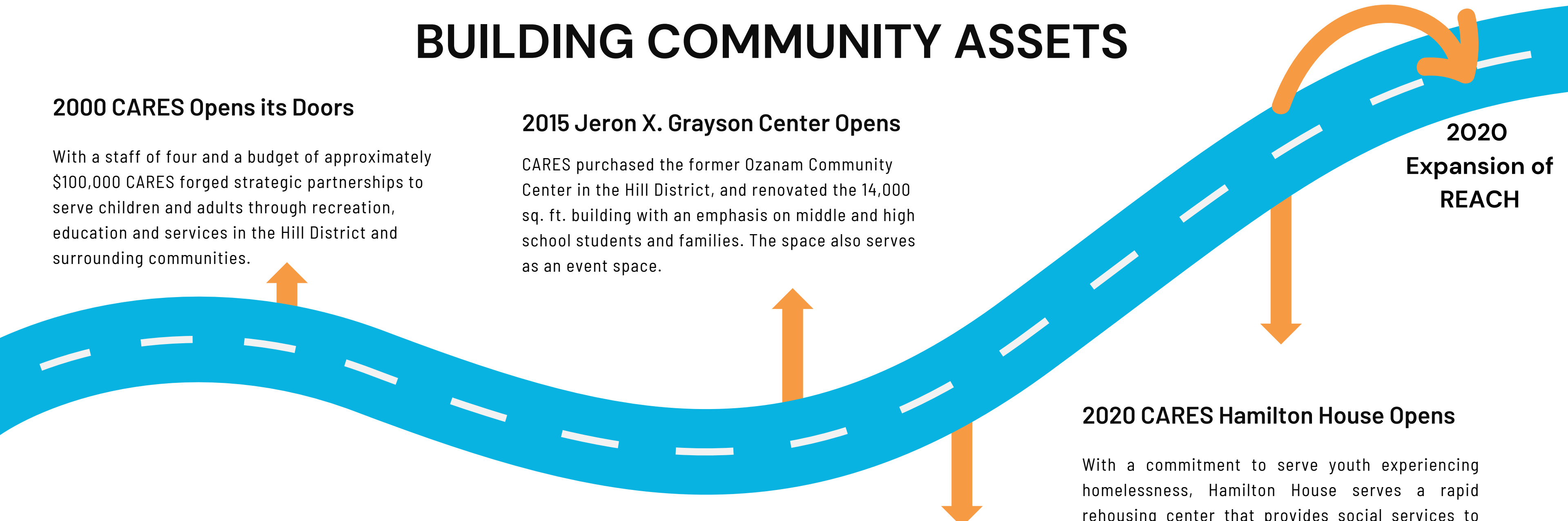
2020 CARES CommuniTEA Cafe opens

CARES CommuniTEA Cafe is a Hill District based social enterprise that provides entrepreneurship and workforce training to youth and young adults, while creating a hub for community networking and information sharing.

2020 CARES Hamilton House Opens

With a commitment to serve youth experiencing homelessness, Hamilton House serves a rapid rehousing center that provides social services to support youth accomplish their goals in a safe environment.

2020 Expansion of REACH



Social Determinants of Health
Example

Our story begins with a commitment to address the root causes of inequities within our community by tackling the social determinants of health head-on. We understand that health is not just the absence of illness, but the presence of a thriving, supportive environment that nurtures every individual's potential. In the heart of our community, where the pulse of potential beats against the odds of social determinants like income inequality, educational disparities, and housing insecurities, stands The Center That CARES. Born from a vision to not just witness change but to weave it into the fabric of our organization, CARES is a beacon of hope and healing.

<u>Social Determinants of Health</u>	CARES Program Alignment*
Education	<ul style="list-style-type: none">• Afterschool & Summer Programming• Global travel experiences• College and Career Preparation
Neighborhood and Physical Environment	<ul style="list-style-type: none">• Grayson Community Center and other buildings that serve as community assets• Sunny’s Garden
Economic Stability (Inclusive of Food and Housing Stability)	<ul style="list-style-type: none">• Hamilton House• CommuniTEA Cafe workforce development• Sunny’s Garden
Social and Community Life	<ul style="list-style-type: none">• REACH
Healthcare	<ul style="list-style-type: none">• House of Notes (mental health)

*This list does not represent all of CARES programs.

Programs

Initiative	Description
CARES Elementary Afterschool Program	The Center that CARES offers our afterschool program focused on K-5 th grades at Wesley Center, serving 150 children. The program operates Monday-Thursday from 2:30-6:30. The Center that CARES has established an integrated continuum of academic enrichment, STEM education, and arts & cultural enrichment using a culturally relevant framework and project-based learning.
Teen Afterschool Program	Offered at the Jeron X Grayson Community Center, our afterschool program is for 6 th -12 th grades and focused on academic enrichment, career and workforce development, leadership development, and STEM education. Serving 100 students annually, the program is available Monday-Thursday from 3:00-6:30.
Summer Camp Program	Offered for seven weeks in the summer, our summer camp program engages 200 students in K-8 th grades in cultural and arts programs, as well as field trips that broaden their experiences.
Learn & Earn Summer Work Experience	Annually, CARES develops six week summer work experiences for 50 youth. Included in this experience is job readiness training, mentoring, and career exposure.



Programs

REACH Violence Prevention Initiative	REACH is a city-wide violence prevention initiative designed to provide neighborhood based outreach, intervention, and prevention programming to youth and youth adults most at risk for participation in negative activities. In partnership with the City of Pittsburgh, PPS, and grassroots organizations, the initiative reaches hundreds of youth annually.
Hamilton House	Hamilton House located on Hamilton Avenue in Homewood offers Rapid Rehousing for Young Adults, a program that provides short-term housing for homeless youth, as well as supportive services that facilitate their transition to self-sufficiency.
CommuniTEA Cafe	CARES CommuniTEA Café is a social enterprise designed to offer a hands-on learning entrepreneurial and workforce experience that promotes leadership, career path development, and resiliency. Moreover, the CommuniTEA offers a positive space for networking reflecting the historical role of the Hill District as a crossroads of culture and community
Healing House	Healing House is annexed to the Jeron X Grayson Campus and serves as a resource to offer individual supportive services and connections to mental health and wellness programs, services, and information.
Community Center	Jeron X Grayson Community Center has created a vibrant campus that not only supports dynamic programming and increases opportunities for Hill District youth and families, but is a neighborhood resource for community networking, information sessions, and social celebrations. Utilized by thousands of individuals annually, the Jeron X Grayson Community Center is an accessible



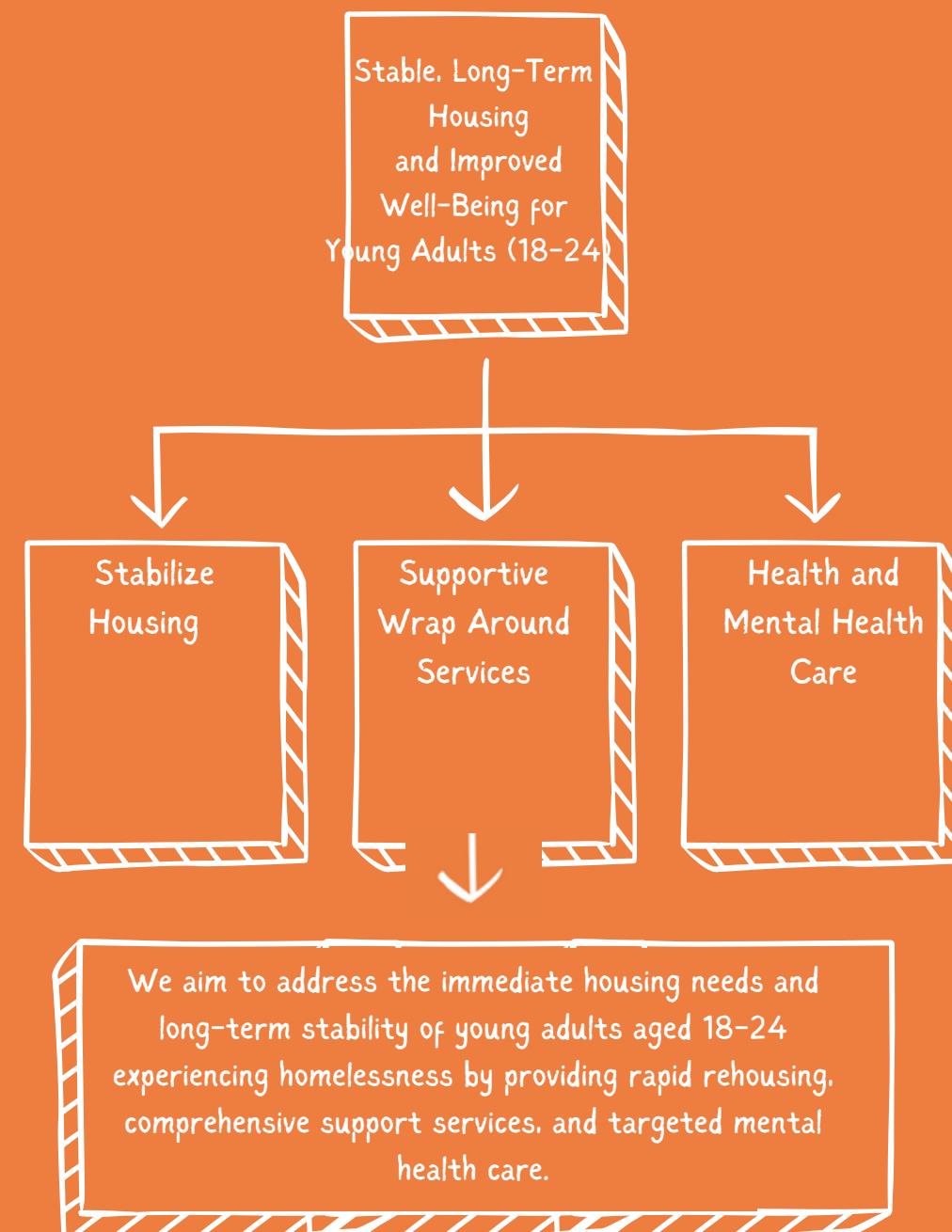
YouthVoices	A critical component of our teen education is developing youth leadership and community activism. From community service projects to city wide teen dialogues to international service experiences, our YouthVoices is a firm commitment to foster our next generation of leaders.
STEM Education	Recognizing the chronic disparity in access and opportunity to STEM education and learning experiences, the Center that CARES has focused programming designed to create quality STEM learning experiences through our elementary and teen afterschool programs.
Career Ecosystem	CARES Career Ecosystem advances the economic mobility of first generation African-American students through innovative interconnected strategies that foster post- secondary success and build social capital.
Pearls & Chucks	An innovative young women’s leadership initiative, this program component strives to strengthen and support leadership skills for young women, as well as connect them to community mentors and civic leaders.
Emerging Projects	
STEM Center	Capitalizing on a quality facility on Wylie Avenue, the Center that CARES is exploring developing a unique, interactive STEM resource focused on accessible cutting-edge learning tools and education models that will address the disparity in access for African American families in our region.





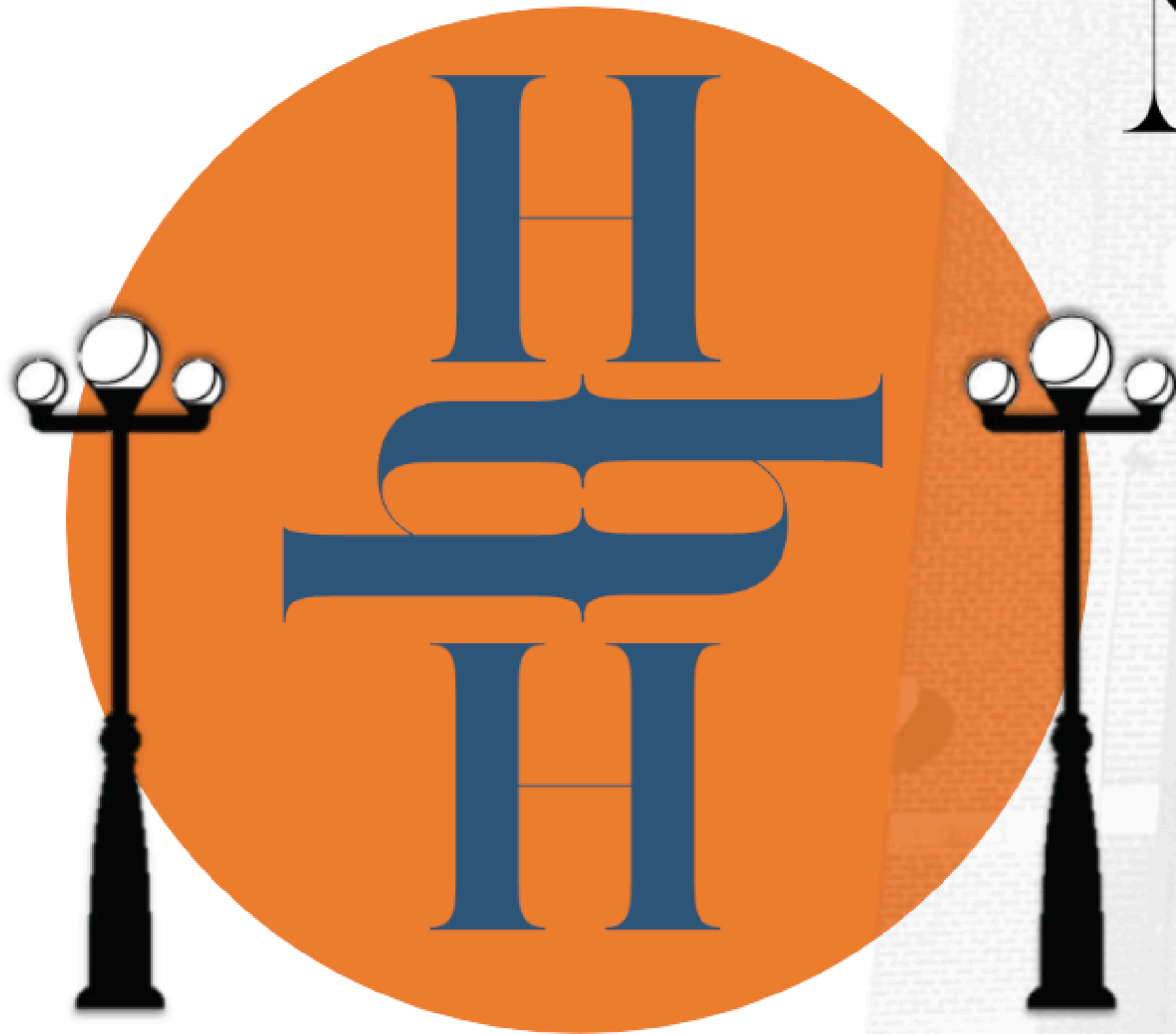
Programs

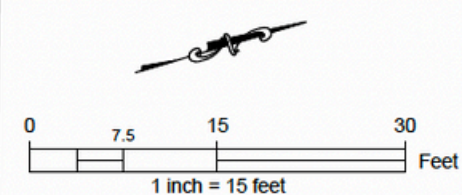
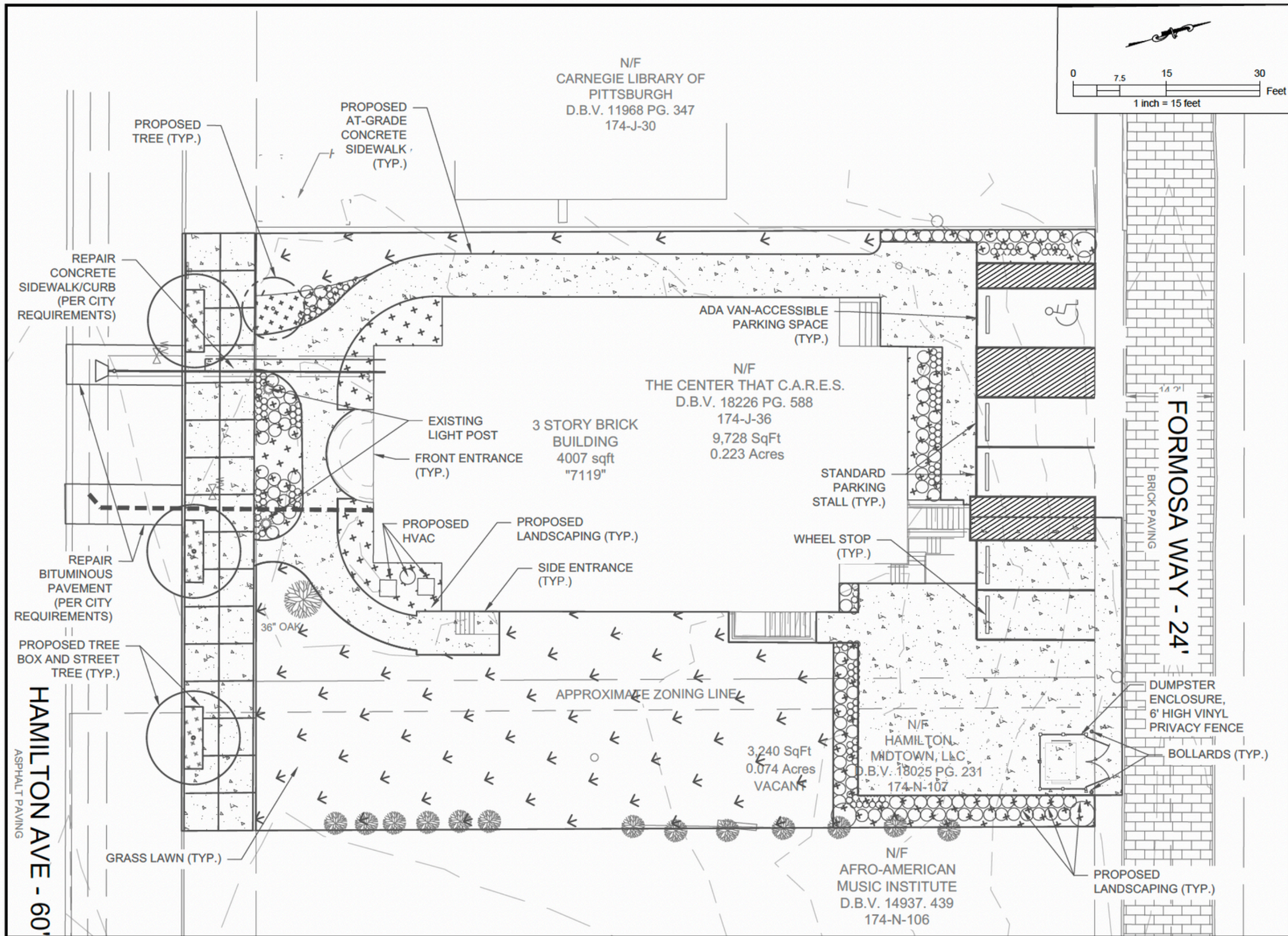
Theory of Change



MAKE HOMIE MORE, NOT LESS.

7119 HAMILTON AVE.
PITTSBURGH, PA 15208





PARKING SCHEDULE:
TOTAL PARKING REQUIRED (§914.02.A):
• 972 SF BUSINESS (1 STALL PER 500 SF) 2 STALLS
• 13 RESIDENTIAL UNITS (1 STALL PER UNIT) 13 STALLS
• 30% BICYCLE REDUCTION (§914.05.E.2) - 4 STALLS
TOTAL = 11 STALLS

PROPOSED PARKING = 5 STALLS (VARIANCE REQUESTED)
ADA PARKING REQUIRED (§914.06.A) = 1 (PROVIDED)
BICYCLE PARKING REQUIRED (§914.05.D.2) = 4 SPACES
TOTAL PROPOSED BICYCLE PARKING = 4 SPACES

PARKING NOTE:
THE EXISTING BUILDING INCLUDES ASSEMBLY SPACE THAT UTILIZES ON-STREET PARKING, WHICH WILL REMAINED UNCHANGED AS PART OF THIS DEVELOPMENT

LANDSCAPING SCHEDULE:
REQUIRED STREET TREES = 3 (1 TREE PER 30 LF OF PUBLIC ROAD)
PROVIDED STREET TREES = 3
REQUIRED PARKING LANDSCAPING = 275 SF (25 SF/PARKING SPACE)
PROVIDED PARKING LANDSCAPING = 593 SF

PROJECT NO. 411-01-2021
DATE APRIL 2024

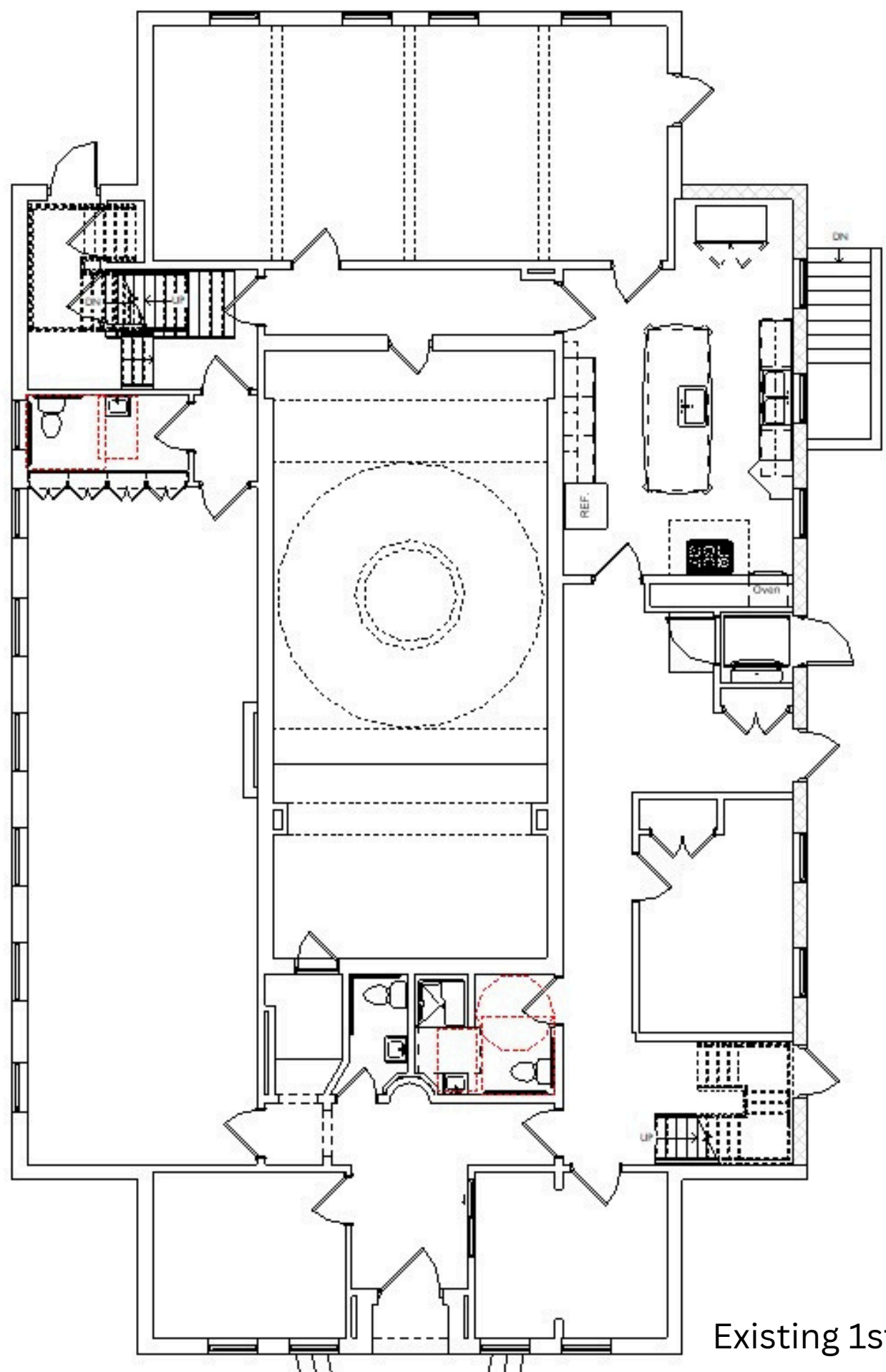
HAMILTON HOUSE

7119 HAMILTON AVENUE
PITTSBURGH, PA 15208

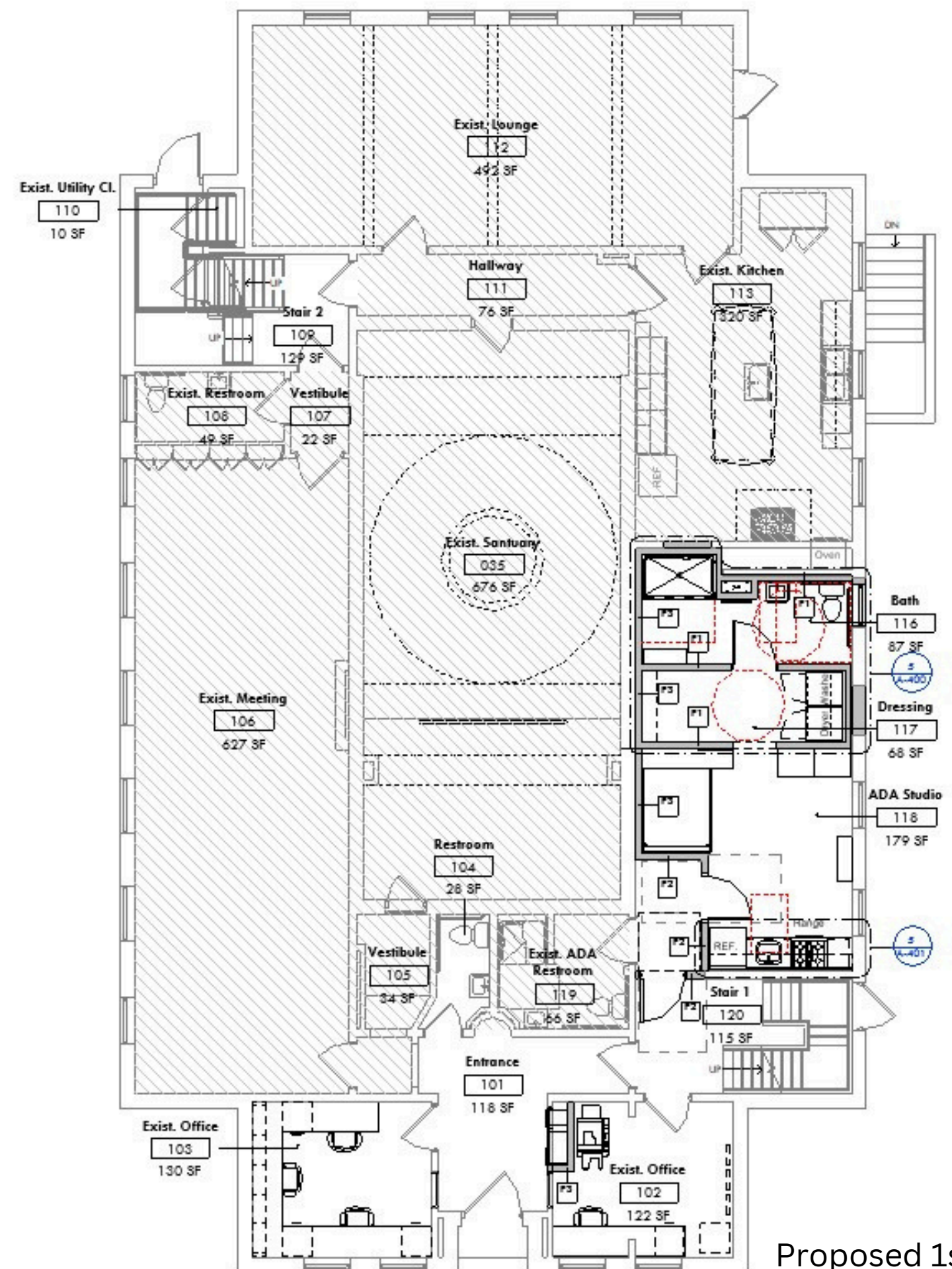
ACTION HOUSING, LLC
2621 CENTRE AVENUE
PITTSBURGH, PA 15219

ZONING DEVELOPMENT
REVIEW SITE PLAN

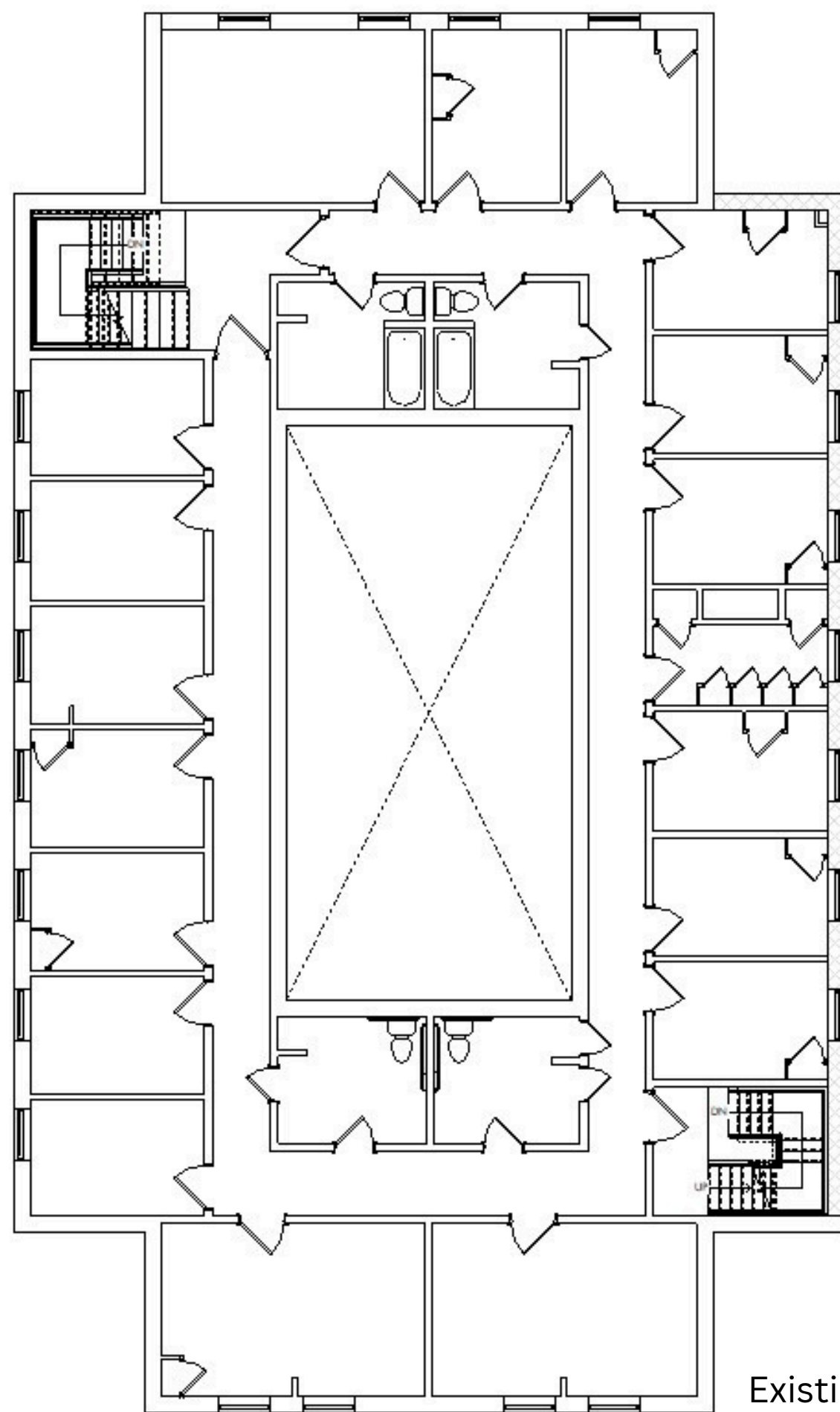
C201



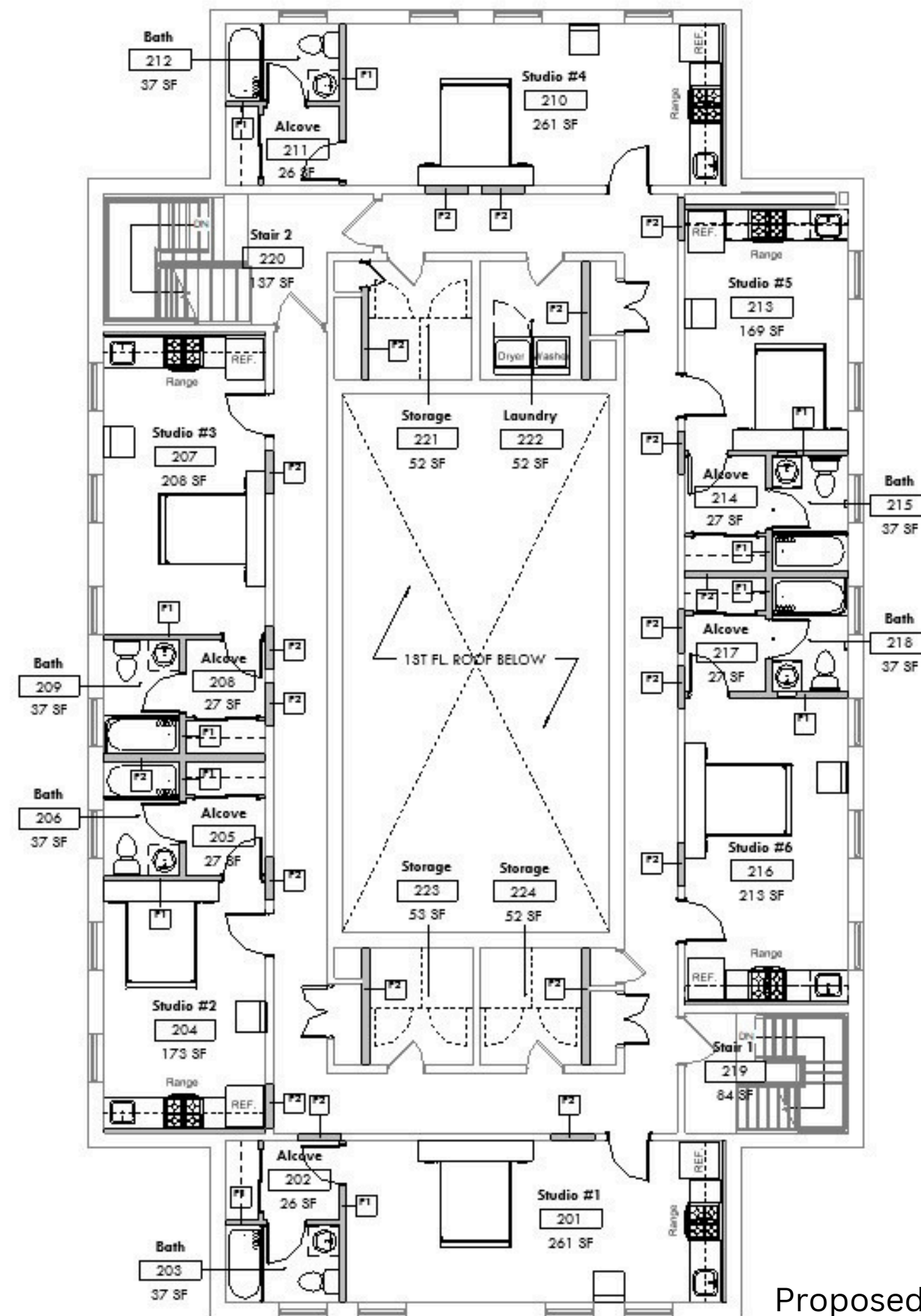
Existing 1st Floor Plan



Proposed 1st Floor Plan



Existing Typical Floor Plan



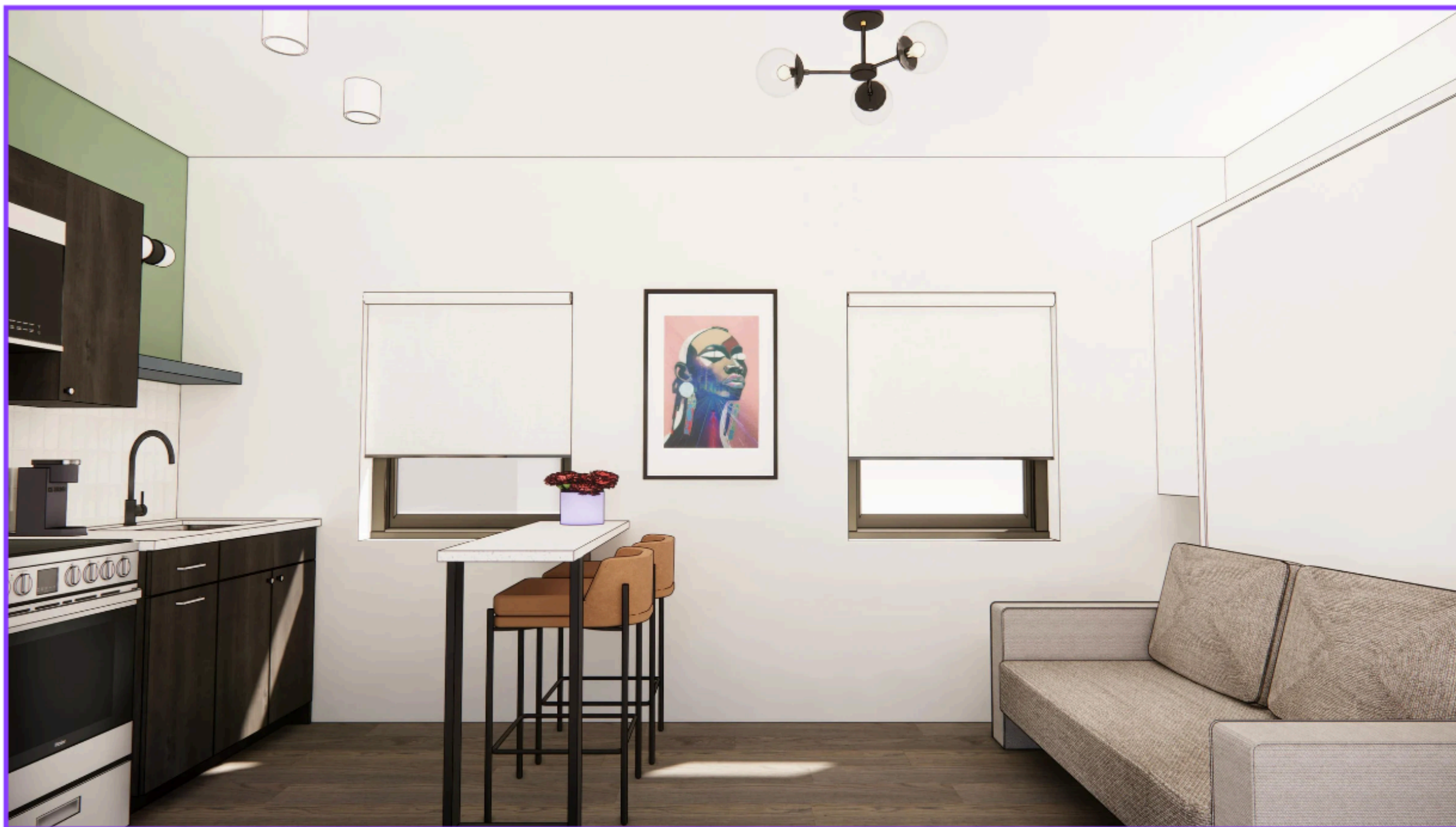
Proposed Typical Floor Plan



SOFA, BED CLOSED

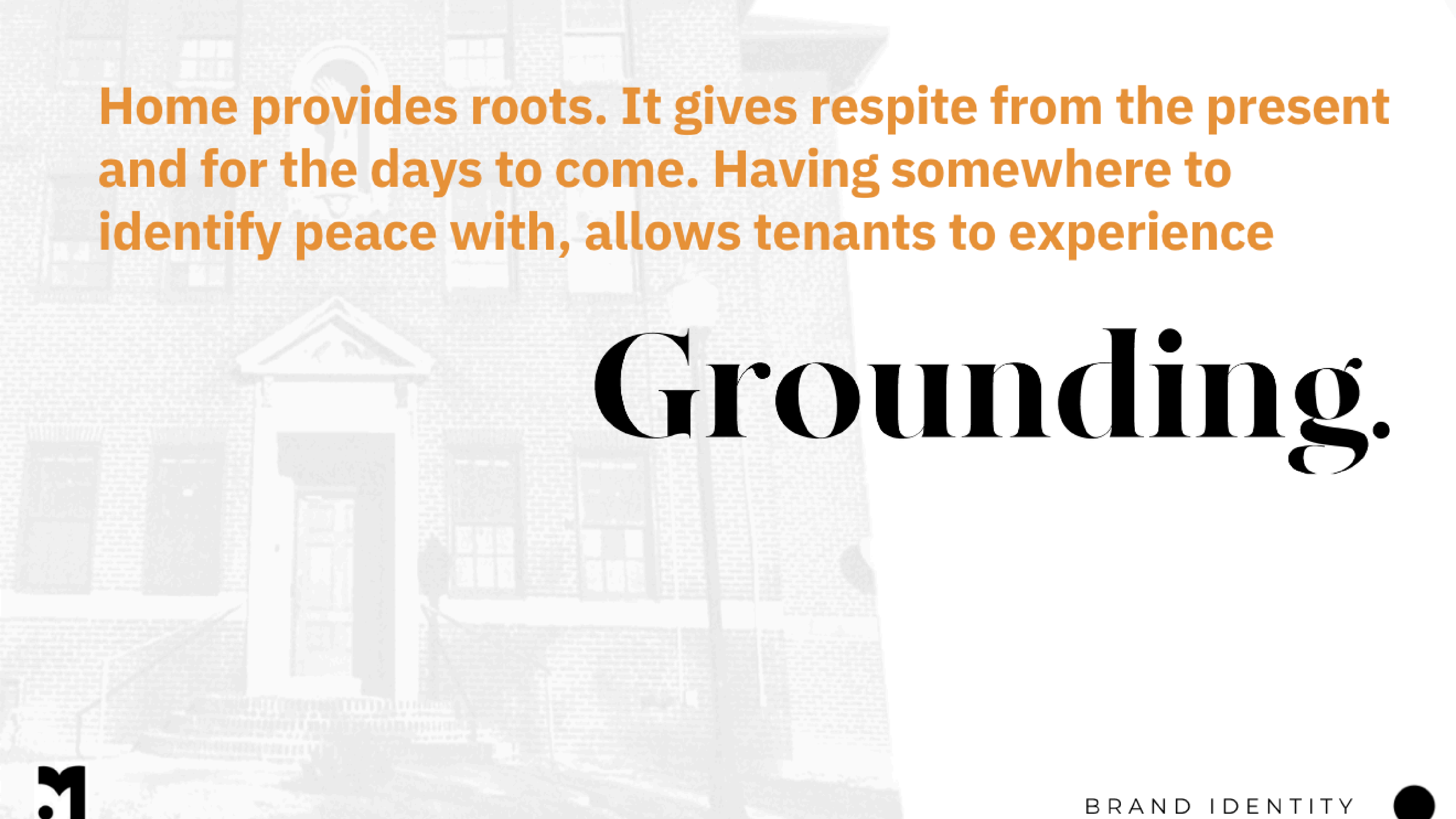


QUEEN BED, OPEN, VERTICAL ORIENTATION









Home provides roots. It gives respite from the present
and for the days to come. Having somewhere to
identify peace with, allows tenants to experience

Grounding.







-single hole faucet, chrome



-shower/tub faucet



-undermount sink, spec by MHRI



-hand towel ring



-tub surround; subway tile look, spec by MHRI



-towel bar/towel shelf, 24"



-toilet paper holder



-toilet as specified by GC



-provide simple art at each bathroom
in orange gallery frame
-art directions?



-provide shower curtains & liners for each
room; each shower curtain is
unique *styles are endless



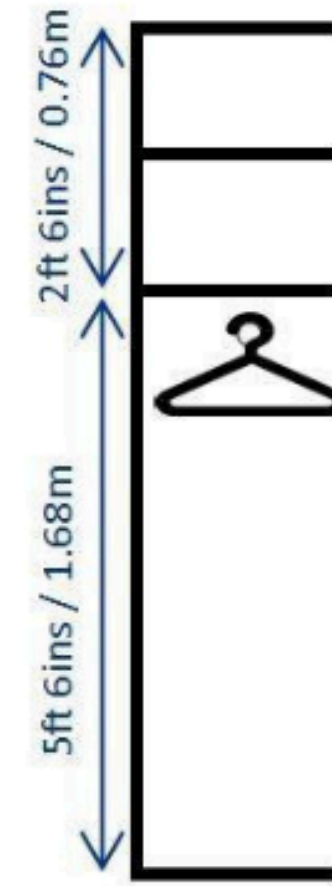
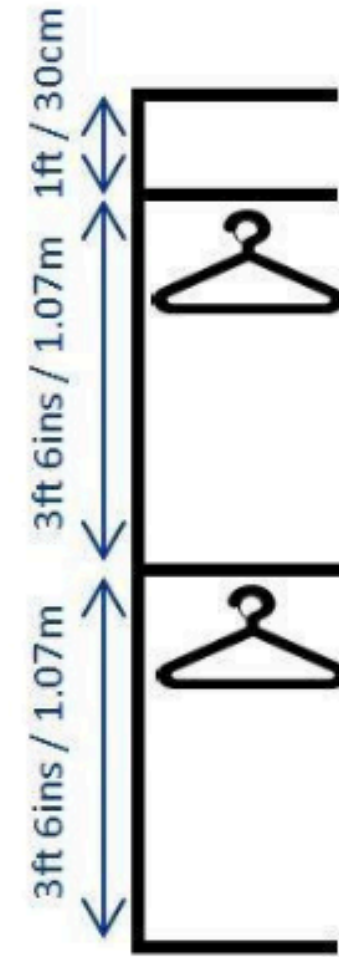
-30X20 black framed recessed
medicine cabinet





-combination of long and short hang + shelves and drawers
 -supplier TBD

*we are removing the closet doors and having an open style closet



-full length mirror to the left or right of entry to closet @ each studio



CLOSETS





-paint at doors, corridor side



-paint at wall panel



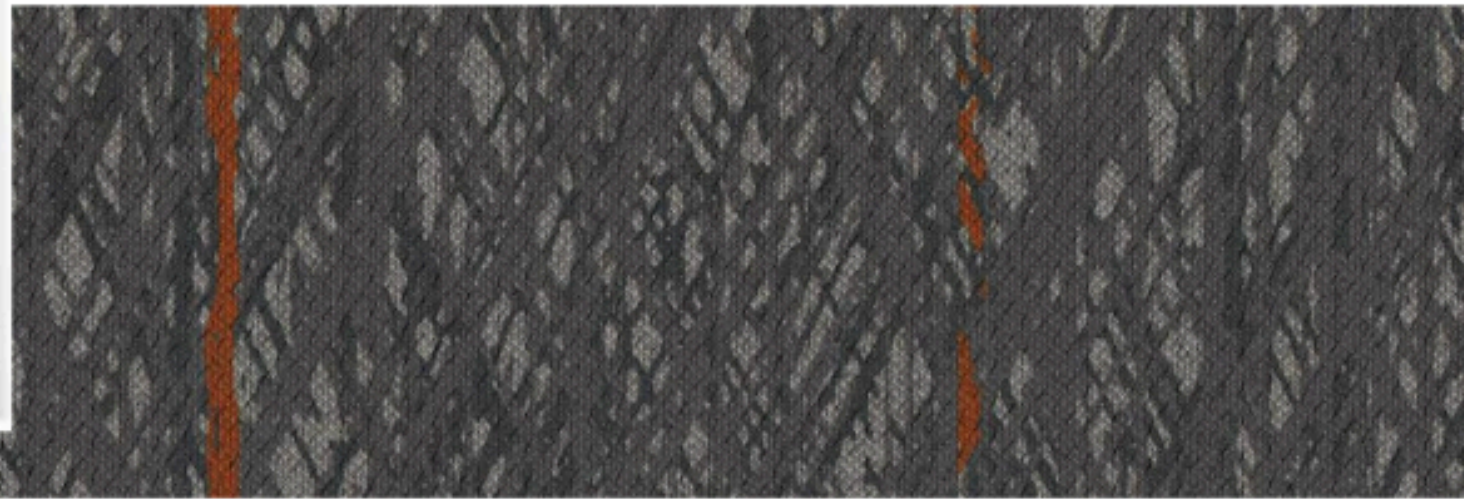
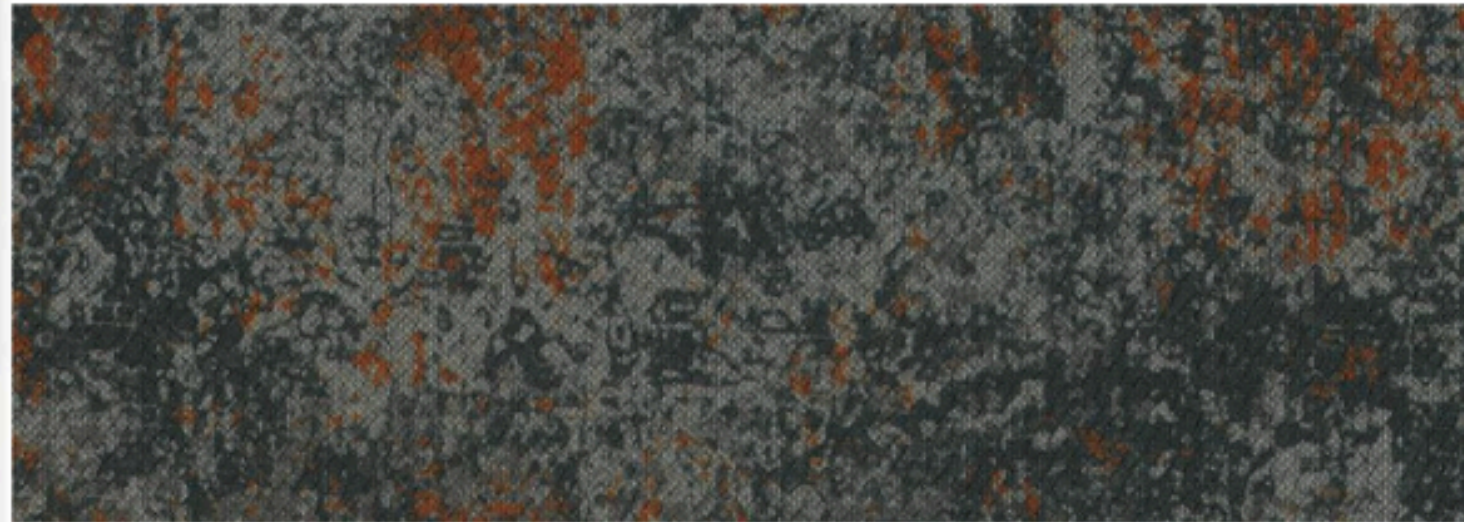
-door hardware style



-door style for studio entry
-slab doors at remaining interior doors




-room signage inspo, braille will be incorporated



-option for carpet tile at level 2 & 3 corridors





Home provides security. It allows you to focus on other areas of growth. Personal and professional life for tenants is made easier with

Stabilization.



Questions

.....

What questions might we answer to move
toward the next steps of partnership?

.....

