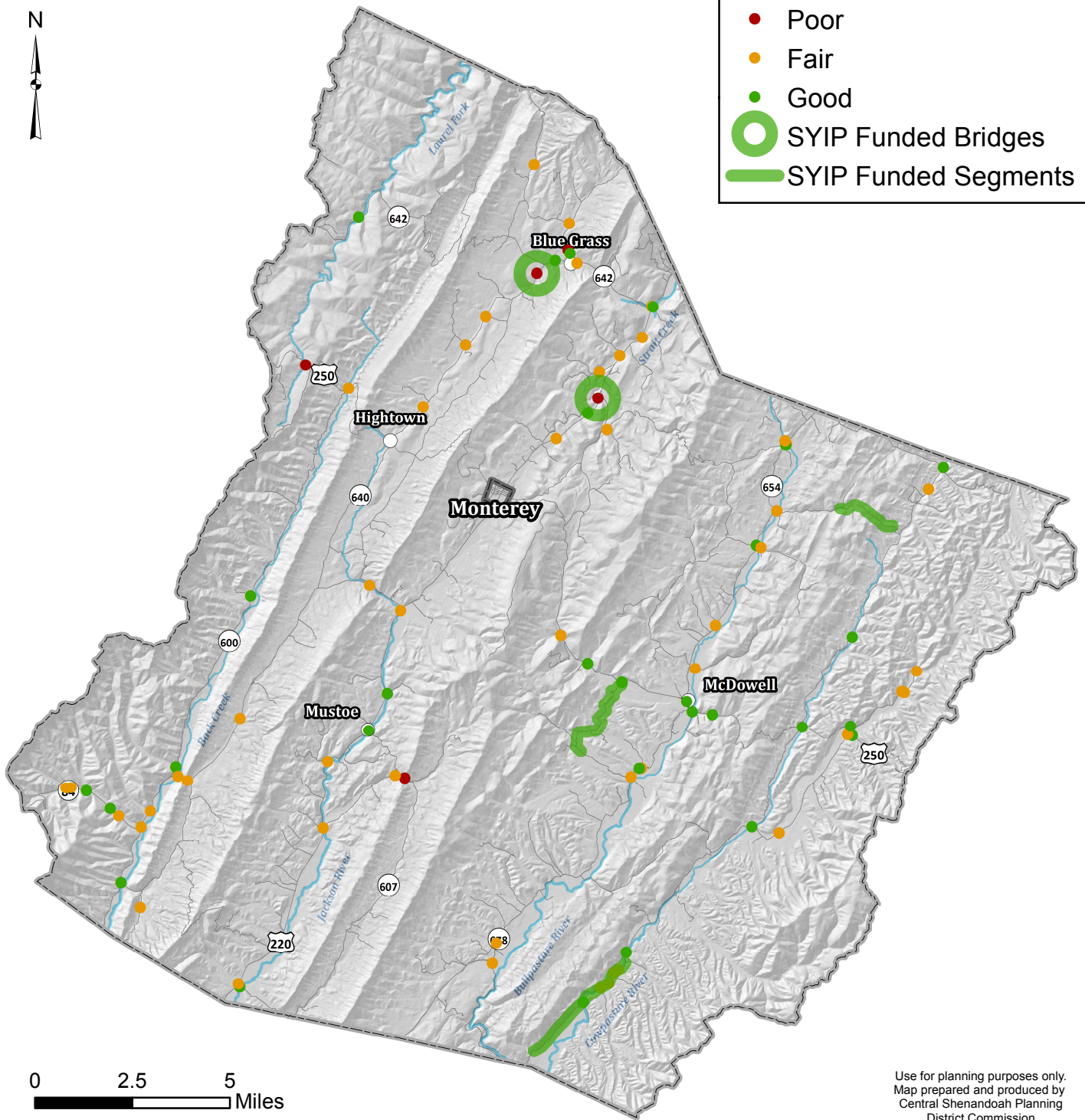
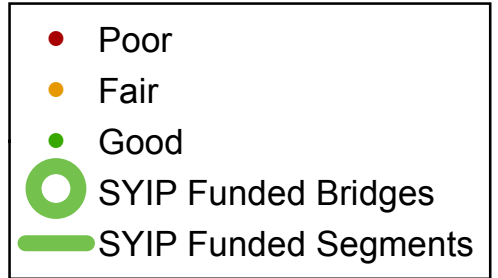







# County of Highland - Bridge Location and Condition

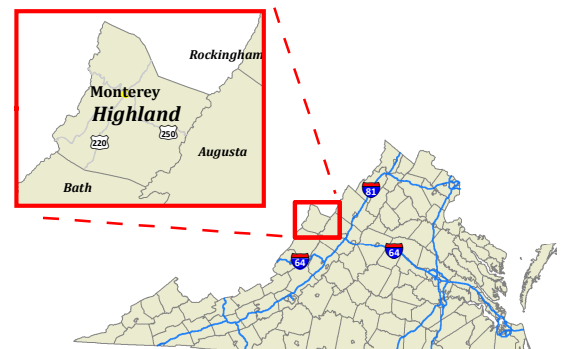


0 2.5 5 Miles

Sources: US Census Bureau, VGIN, BARC, and USDA/NRCS

Use for planning purposes only.  
Map prepared and produced by  
Central Shenandoah Planning  
District Commission  
January 2021

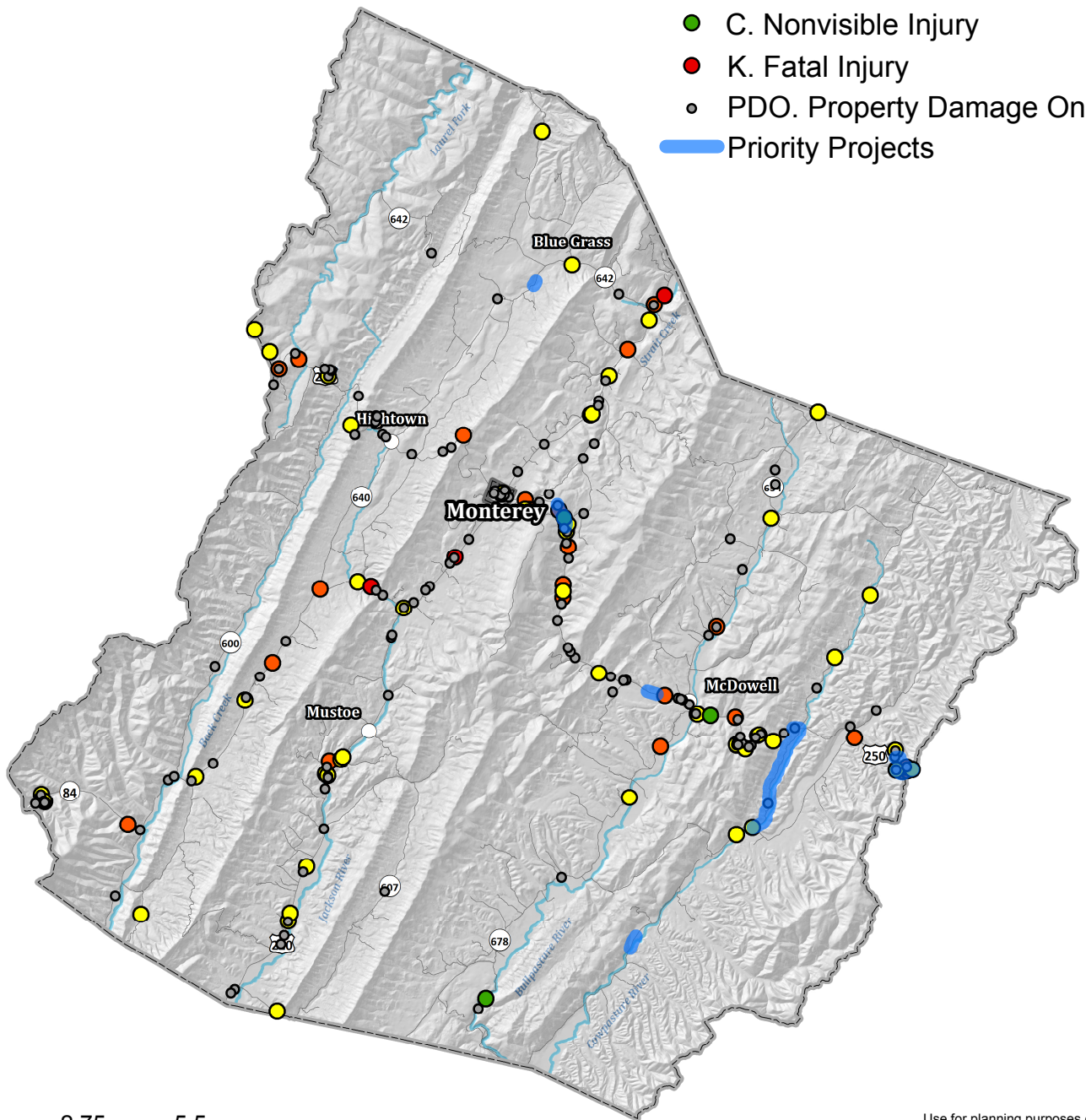
-  Town Limits
-  Highland Co. Boundary
-  Populated Places
-  Roads
-  Hydrology



# County of Highland - Crashes, Jan 2015 - Sep 2020



- A. Severe Injury
- B. Visible Injury
- C. Nonvisible Injury
- K. Fatal Injury
- PDO. Property Damage Only
- Priority Projects

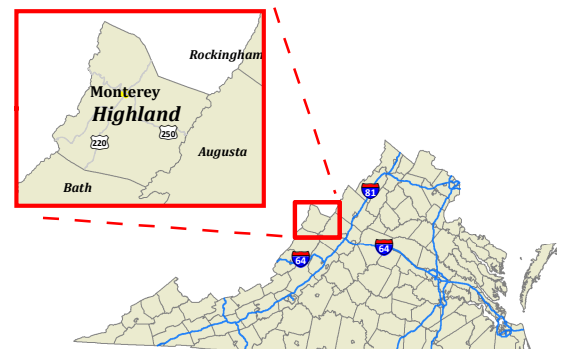


0 2.75 5.5  
Miles

Sources: US Census Bureau, VGIN, BARC, and USDA/NRCS

Use for planning purposes only.  
Map prepared and produced by  
Central Shenandoah Planning  
District Commission  
January 2021

- Town Limits
- Highland Co. Boundary
- Populated Places
- Roads
- Hydrology

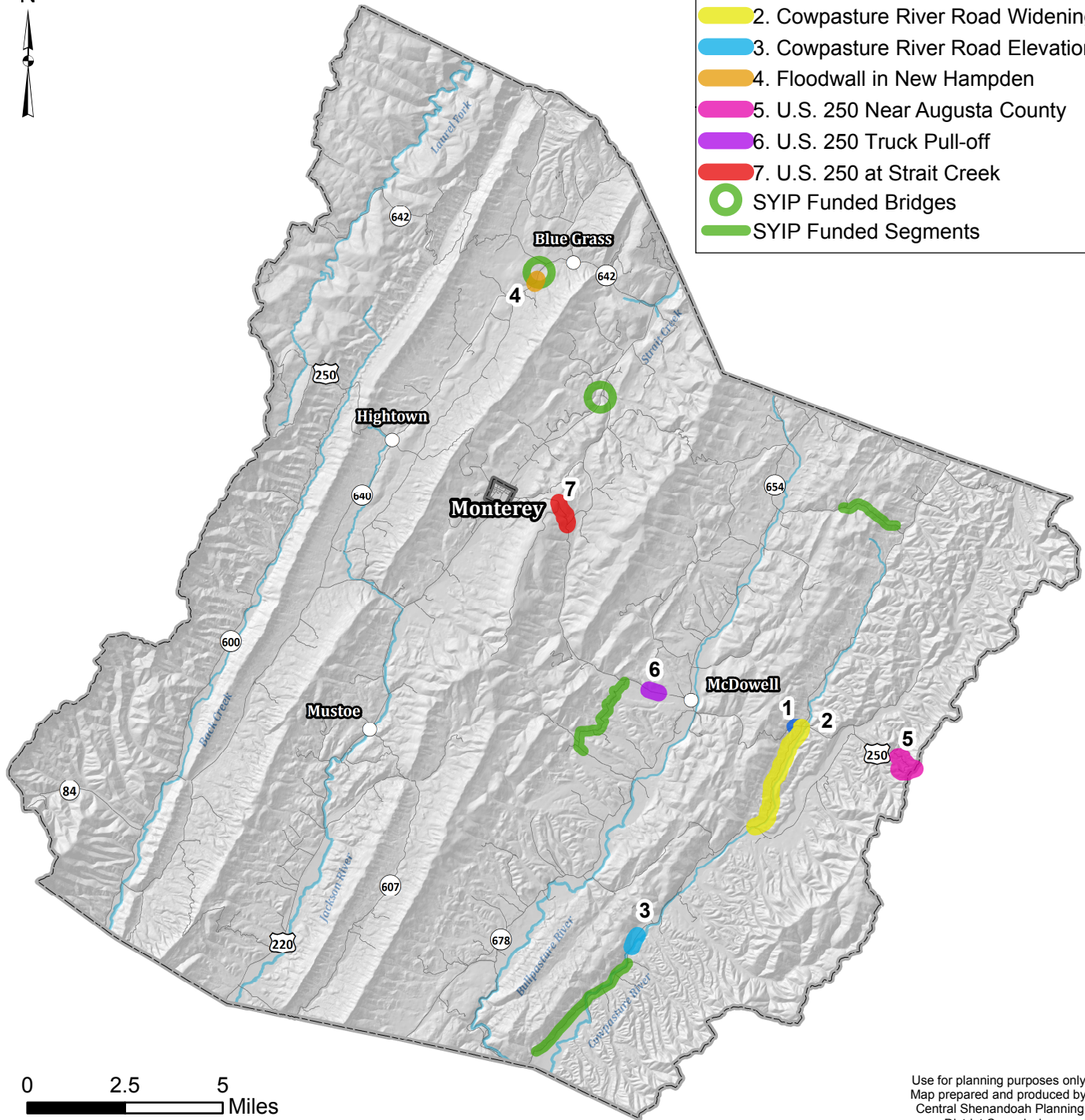




# County of Highland - Priority Projects and SYIP Projects



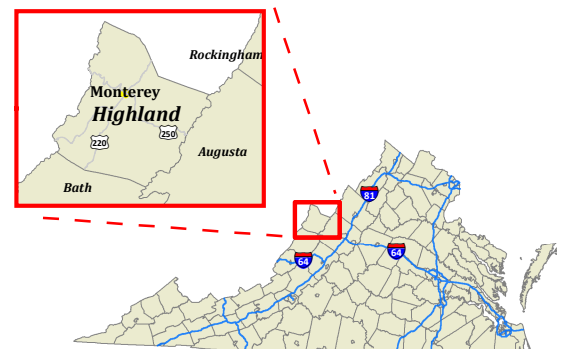
- 1. U.S. 250 East Truck Pull-off
- 2. Cowpasture River Road Widening
- 3. Cowpasture River Road Elevation
- 4. Floodwall in New Hampden
- 5. U.S. 250 Near Augusta County
- 6. U.S. 250 Truck Pull-off
- 7. U.S. 250 at Strait Creek
- SYIP Funded Bridges
- SYIP Funded Segments



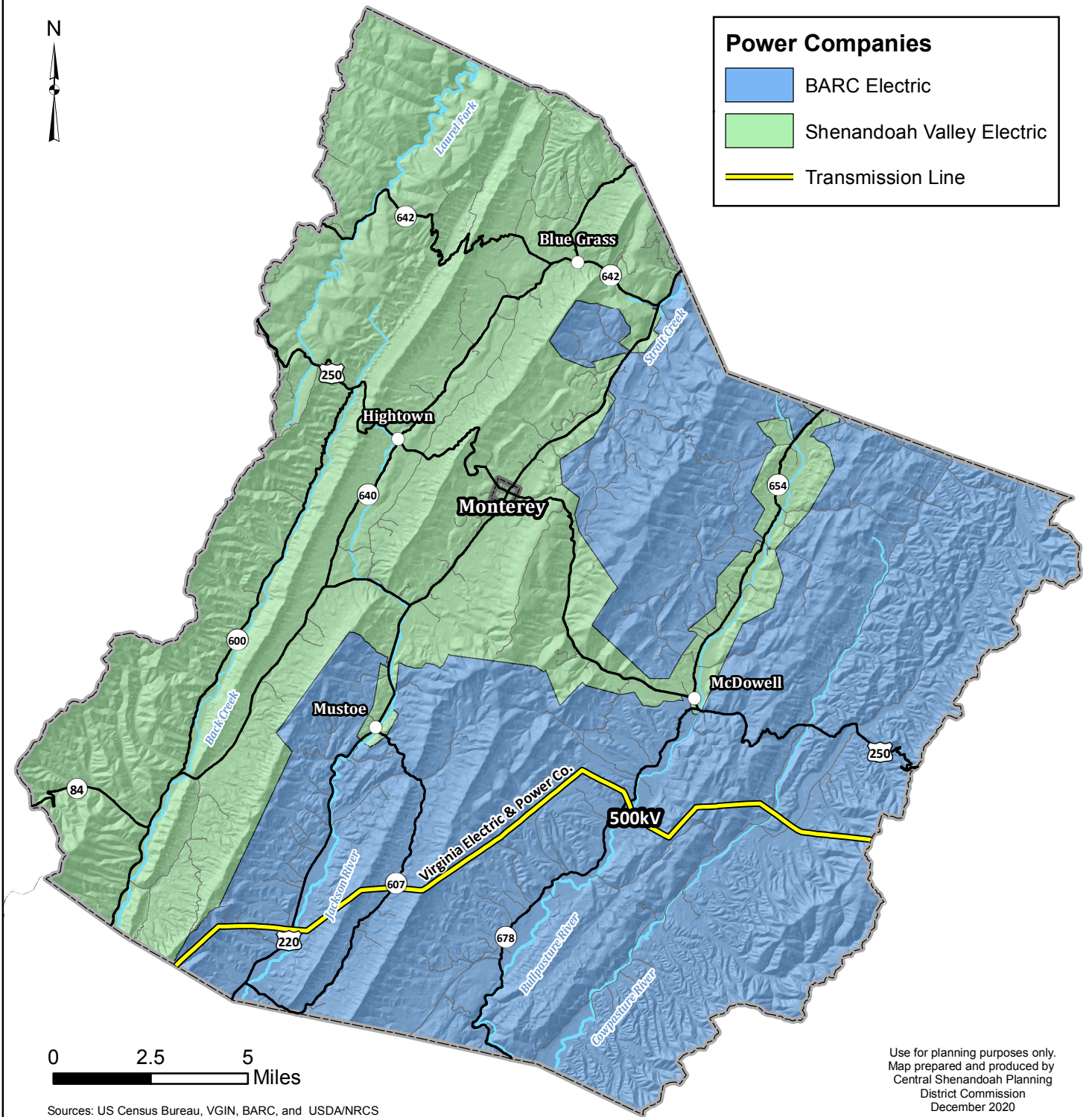
Sources: US Census Bureau, VGIN, BARC, and USDA/NRCS

Use for planning purposes only.  
Map prepared and produced by  
Central Shenandoah Planning  
District Commission  
January 2021

- Town Limits
- Highland Co. Boundary
- Populated Places
- Roads
- Hydrology

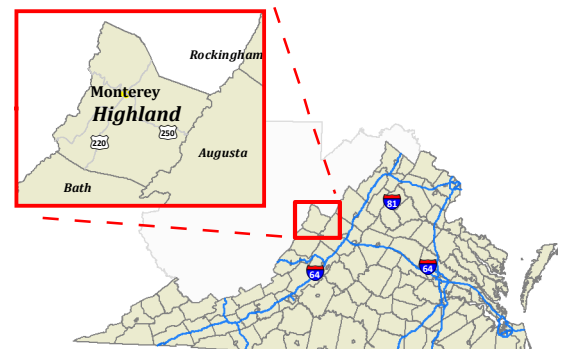


# County of Highland - Power Companies Service Areas



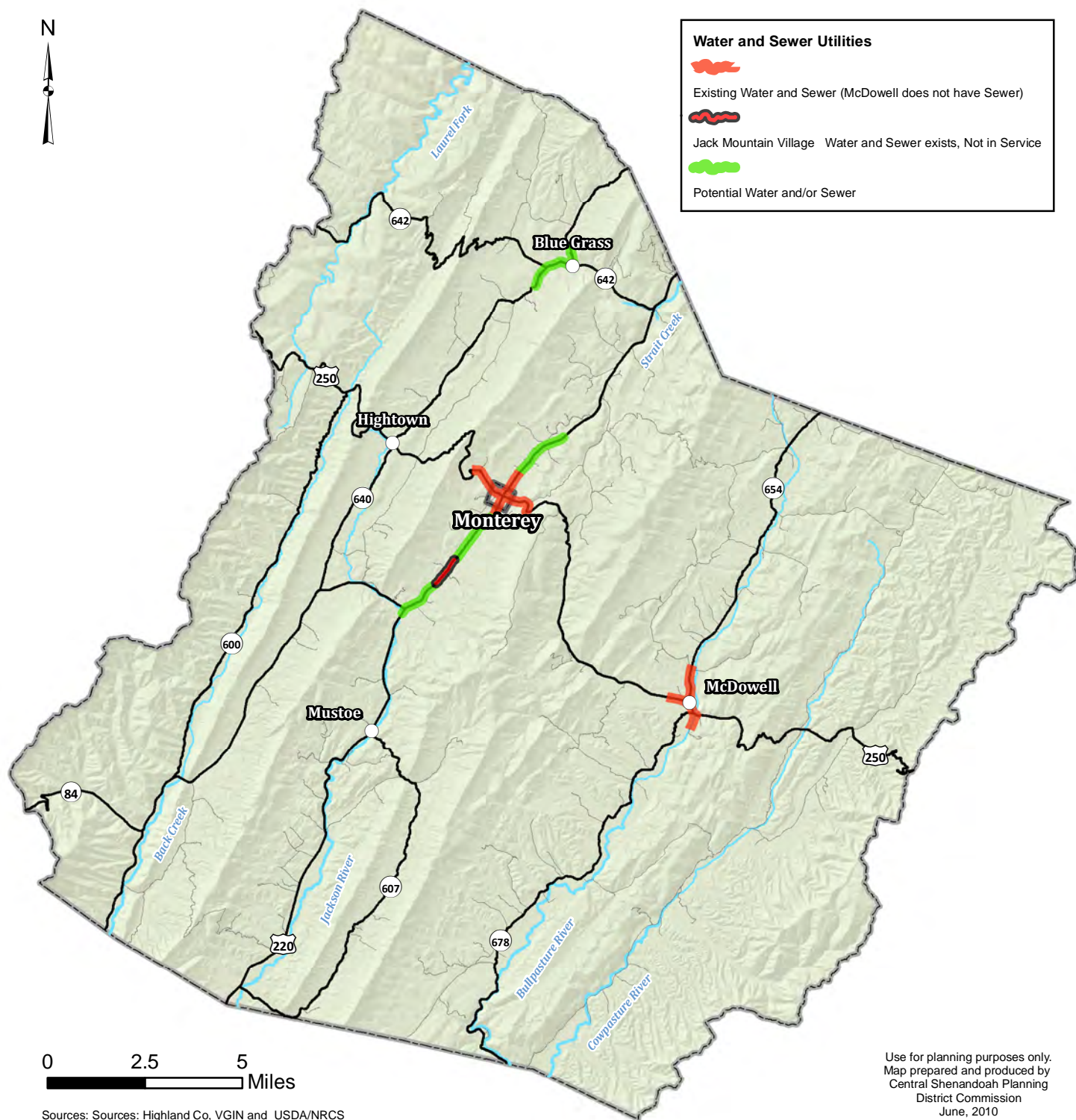
Use for planning purposes only.  
Map prepared and produced by  
Central Shenandoah Planning  
District Commission  
December 2020

- Town Limits
- Highland Co. Boundary
- Populated Places
- Roads
- Hydrology





# County of Highland - Sewer and Water Infrastructure



- Town Limits
- Highland Co. Boundary
- Populated Places
- Roads
- Hydrology

