



Studio Overview

WHAT'S INCLUDED

STUDIO FEATURES

- Total Flexible Shooting Area 1,720 sqf
- 16 Feet Ceilings at the Studio
- Studio With A/C
- Back lit Cycloramas
- Several Outlets & Extension Cords

SHOOTING AREAS

- 23' x 12' 180° White Cyclorama
- 11.5' x 12' 180° Green Cyclorama
- Product White Cyclorama Table
- Product Transparent Cyclorama
- Kitchen w/lots of Kitchenware
- Electric Rolling Kitchen Table
- 80 Small Food Backgrounds
- 20 Large Color 9' Background Rolls
- Background Projector

AMENITIES

- Hair & Make-up Dressing Room
- Wardrobe Rack
- Small Meeting Area
- Small Lobby Area
- Restrooms

Street level access

- Wheelchair Accessible
- Back Gate Access For Equipment
- Parking
- High Speed WiFi Internet
- Drinking Water

LIGHTING EQUIPMENT

- LED Lights 35w, 80w, 250w & 300w
- Flood Lights 220w & 330w
- Fluorescent Lights 500w for Cyclorama
- Backgrounds
- Color Gels
- Fresnel Modifiers
- Reflectors & Cone Reflectors
- Difusers
- Reflector Grids
- Barndoors
- Flags
- Round and Rectangular Soft Boxes
- Heavy Duty Stands & Booms
- Light Duty Stands & Booms

VIDEO EQUIPMENT

- Teleprompter w/ipad software
- Video Monitor HDMI
- 2 Small Video Monitors SDI
- PVC Dolly

PHOTO EQUIPMENT

- Camera Stand For Photography
- 400w Photo Flash Heads

SOUND EQUIPMENT

- Bluetooth Sound Speaker
- Sound Blankets
- Rode NTG 3 Boom Mic XLR

OTHER EQUIPMENT

- Apple Boxes
- Tables
- Chairs
- Iron & Steamer
- Various Size Ladders
- Large Fan
- Large Manual Turn Table
- Sandbags

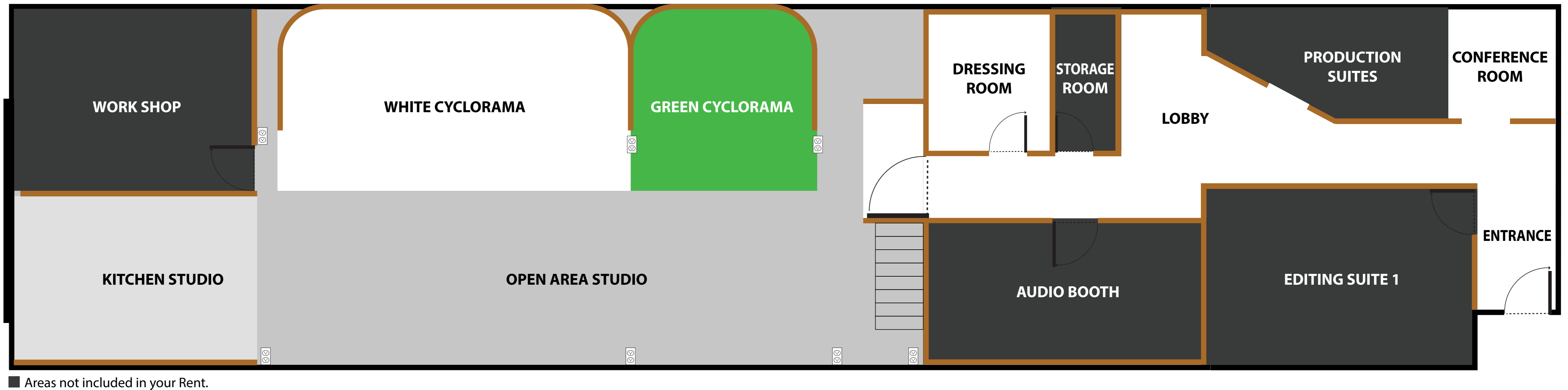
NOTE: There's no natural light nor Sound Proof at the Studio.

Floor Plan

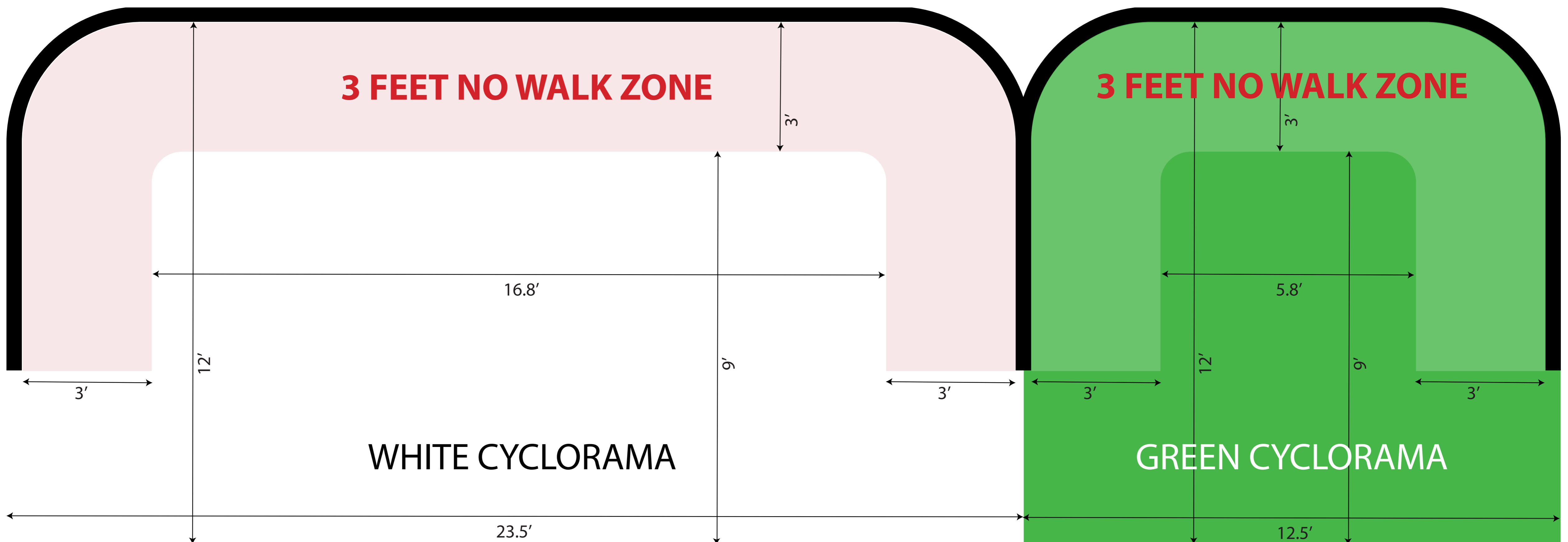
HDmedia Studio has several areas to help artists have the most options to create their vision in one controlled space. The Main Studio Area is divided in four specific zones, the White Cyclorama, the Green Screen Cyclorama, the Kitchen Studio and the Studio Area.

All the spaces are designed to give you freedom with the tools for a successful photo or Video Shot.

THE AREA



CYCLORAMAS SPECS



The Rules

GENERAL RULES

- **ENTER:** This is a self service Studio, you will be issued a Code to enter the premises (the last 4 Digits of your Phone) This code will be active during the time of the scheduled rent.
- **BACK GATE:** If you need to use the back gate to load heavy equipment, please let us know before your shoot so we can have someone present.
- **CYCLORAMAS:** have a 3 feet DO NOT STEP area on each wall. Please be mindful of these areas. The curb of the cyclorama will break if anyone steps on it. A fee of \$150 will be charged per occurrence.
- **CYCLORAMA CARE:** A \$50 painting charge will be applies to the bill if Cycloramas are scratched, marked or stain.
- **CLEANING:** The renter is responsible for cleaning up and returning the equipment to it's designated areas at the end of the session.
- **DAMAGES:** The Renter is responsible for any damages to the facility or equipment done by his crew, talents or guests.
- **FOOD OR BEVERAGES:** No eating or drinking are allowed in the main studio, cycloramas or near any equipment, unless they are part of the shoot. If spills are part of the shoot, you must cover all areas and equipment, to avoid stains.
- **SMOKING:** No smoking allowed on premises, only in designated areas outside the building.
- **KIDS:** NO Kids are allowed, unless they are the talent.
- **SMOKE MACHINE:** are allowed.
- **NUDITY:** No full Nudity re allowed.
- **BE QUIET:** No loud talk or chat while recording.
- **ONLY AUTHORIZE:** the people in the shot should be allowed in the studio, to avoid over crowd the shooting area, and reduce the chance of tripping with equipment.
- **PROPS:** Furniture, decorations and equipment can be moved or use in the shoot, as long as they are placed back to it's original location.
- **NO SOUND PROOF:** The studio is NOT Soundproof. Some outside noises may occur during a long recording. We have occasional noise from neighbors and planes, for most of the video productions, this is not an issue, but for long interviews this may be an issue. If you require audio recording only, we offer an audio recording studio with proper isolation and acoustics for voiceover recording. The audio recording studio is a separate entity and requires it's own appointment and payment. For more information on the audio recording studio contact: www.TheVoiceoverBooth.com
- **NO TRAINING:** You must have some knowledge on how to safely operate our equipment before arriving. We do not provide any training on equipment.
- **WE ARE NOT RESPONSIBLE:** HDmedia and it's affiliates and associates, are NOT Responsible for any accident, injury, death, copyright infringement, Error and Omissions, defamation loss of media, delays, cancelation, interruption, or destruction occurred by any means out of HDmedia's control.
- **INSURANCE:** Production insurance is not required.
- **CCTV:** There are Security Cameras and recording devices around the space, except in the dressing room.
- **PAYMENT:** for the rent is due after the end of the session. A 50% advance is required for all other services.
- **CANCELLATION:** must be made 48 hours before the shoot date. If any preproduction was involved, we'll charge accordingly.
- **OVERTIME:** Additional time will be charged accordingly.

BEFORE YOU ARRIVE

- **FIRST:** Please get familiar with the content in our catalog.
- **TRAINING:** Take your time and read about the use, the care and any warnings about the equipment you are going to use.
- **EQUIPMENT:** Some equipment may require extensive knowledge and experience to use it correctly, in this case, we suggest you hire an operator, please ask for rates.
- **PROPS:** You may bring any props that you are planning to use on your shoot.
- **ILLUMINATION:** The Space does not have natural light. We have many options for light sources and modifiers to accommodate any scenario.
- **ELECTRICAL:** We have four main lines of 20 amps in the studio without access to the breaker box and 60 amp box with access from the offices. We have 10 outlets in the studio. Do not overload any of our outlets since the Circuit breakers can not be accessed.
- **PARKING:** Free onsite parking. The Front Side of the building there's plenty of space for parking. The Left Back Side of the building is limited parking (no more than 3 cars) and must be next of close to our gate door, this parking can be use to download equipment and props. Night Time after 6pm there's plenty of Parking on the Front or the Back Side of the building.
- **LOADING:** We have two entrances. One thru the building's main entrance following the main corridor all the way to the end. The Second is a gate on the left side of the building for loading equipment and props.
- **OTHER:** If you planning to use any of our Crew & Talent services, other available Props, Equipment or shooting in any area in our offices, you must contact us for availability and pricing if applies.
- **TIMES OF OPERATION:**
Monday-Friday 7:00 AM - 11:00 PM
Saturday 7:00 AM - 8:00 PM
Sunday 8:00 AM - 6:00 PM
TIMES NOT SUITED FOR SHOOTING VIDEO WITH AUDIO
5:00 PM - 7:00PM