



**Student Engagement &
Mentoring in Technology**

Network Devices

Exploring the Key Components of Modern Networks

Thomas Holt Russell, M.Ed., Hon. D. (Cybersecurity0

Objective



Explain the basic networking concepts.

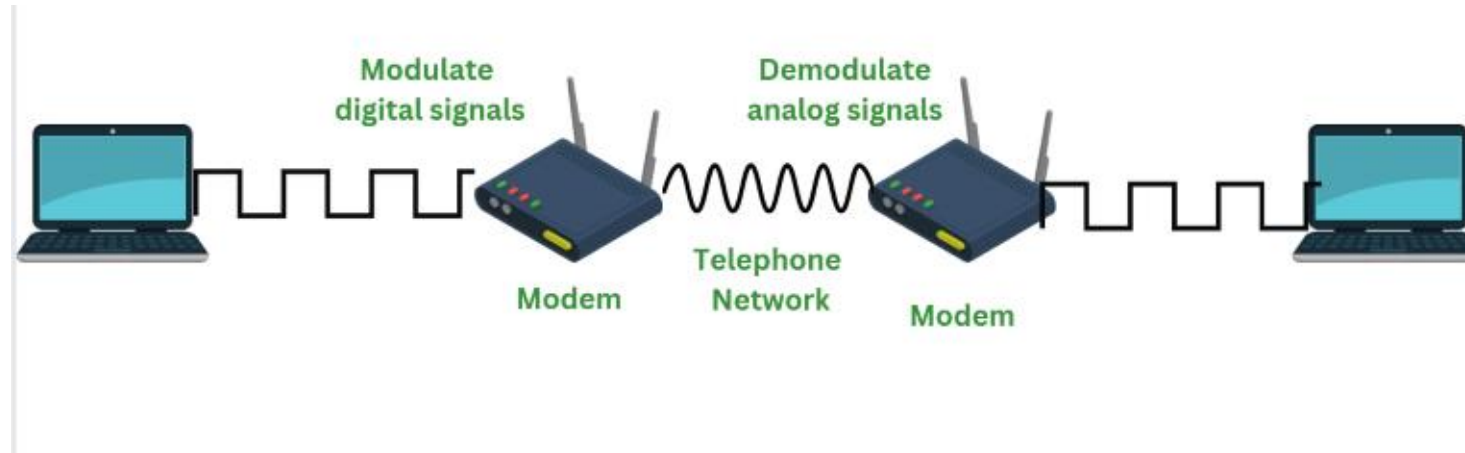


Focus on the network devices that are essential in carrying data to its destination.

Overview of Network Devices

What are Network Devices?

- Network devices play a critical role in communication and data transfer.
 - Often hidden in technical rooms, they ensure that networks run smoothly.
-
- Modem
 - Router
 - Switch
 - Access Point
 - Firewall

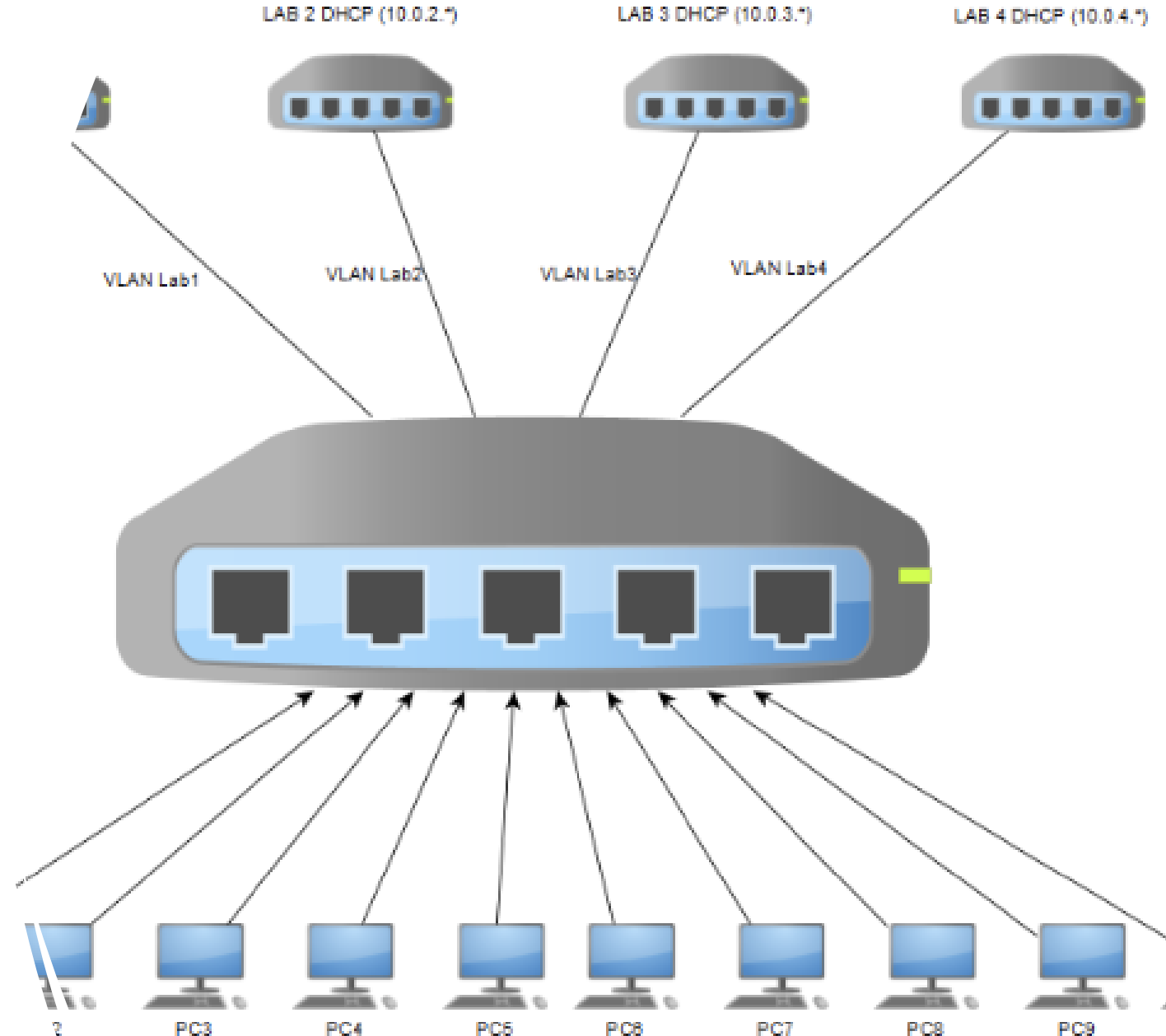


Modem

- Modems bridge the analog and digital worlds.
- **Functions:** Modulation and Demodulation.
- Initially connected computers over telephone lines; now used in DSL and cable networks.

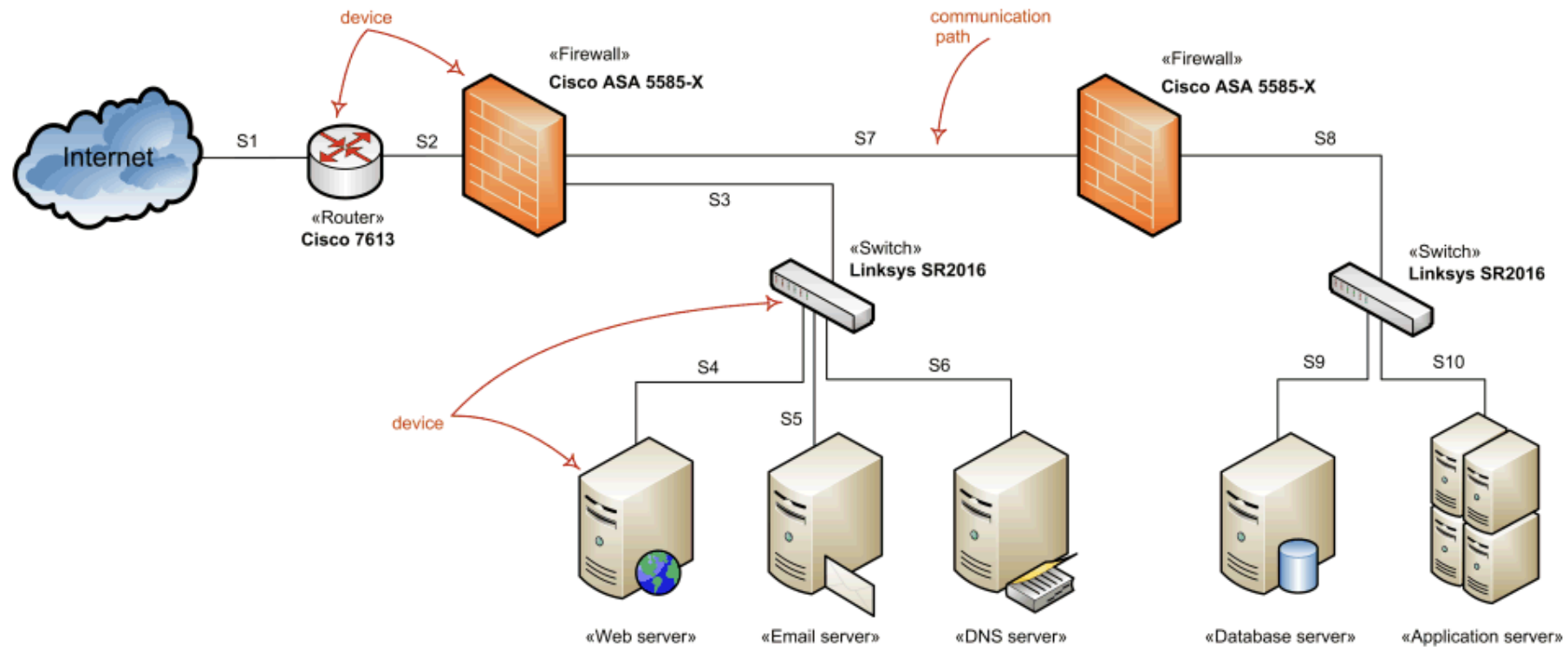
Switch

- Switches connect devices in a Local Area Network (LAN).
- Use MAC addresses to direct data to the correct port.
- Critical in linking devices and managing local traffic.



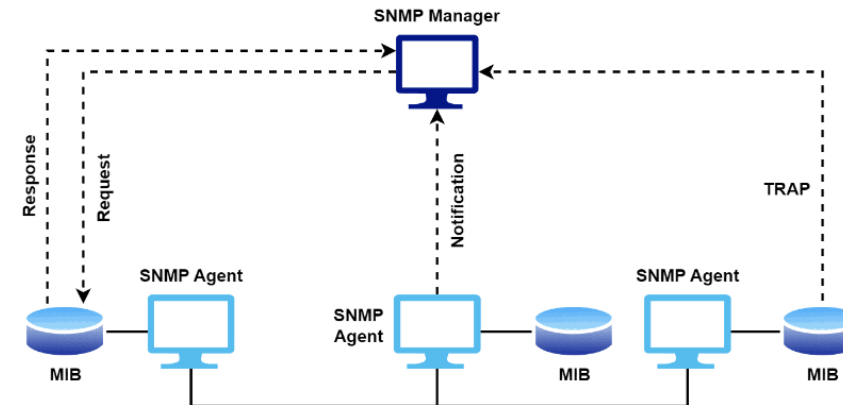
Router

- Routers manage traffic between local networks and the Internet.
- Use IP addresses to route data.
- Central to the infrastructure of a modern network.

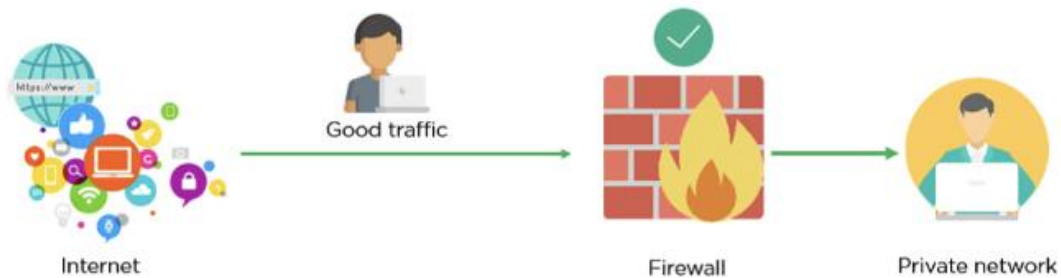


Simple Network Management Protocol (SNMP)

- Centralized management protocol for large networks.
- Automates configuration and monitoring.
- Saves administrators' time by simplifying management tasks.



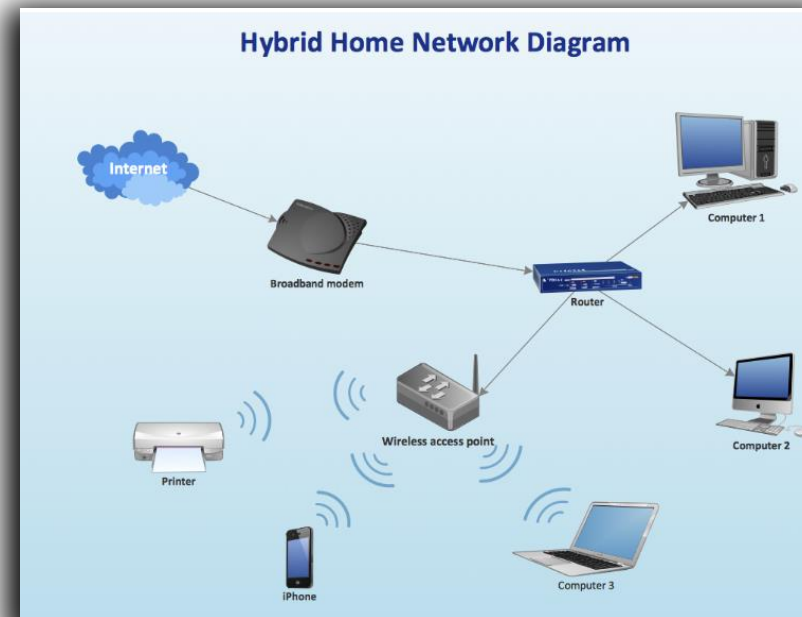
Firewall



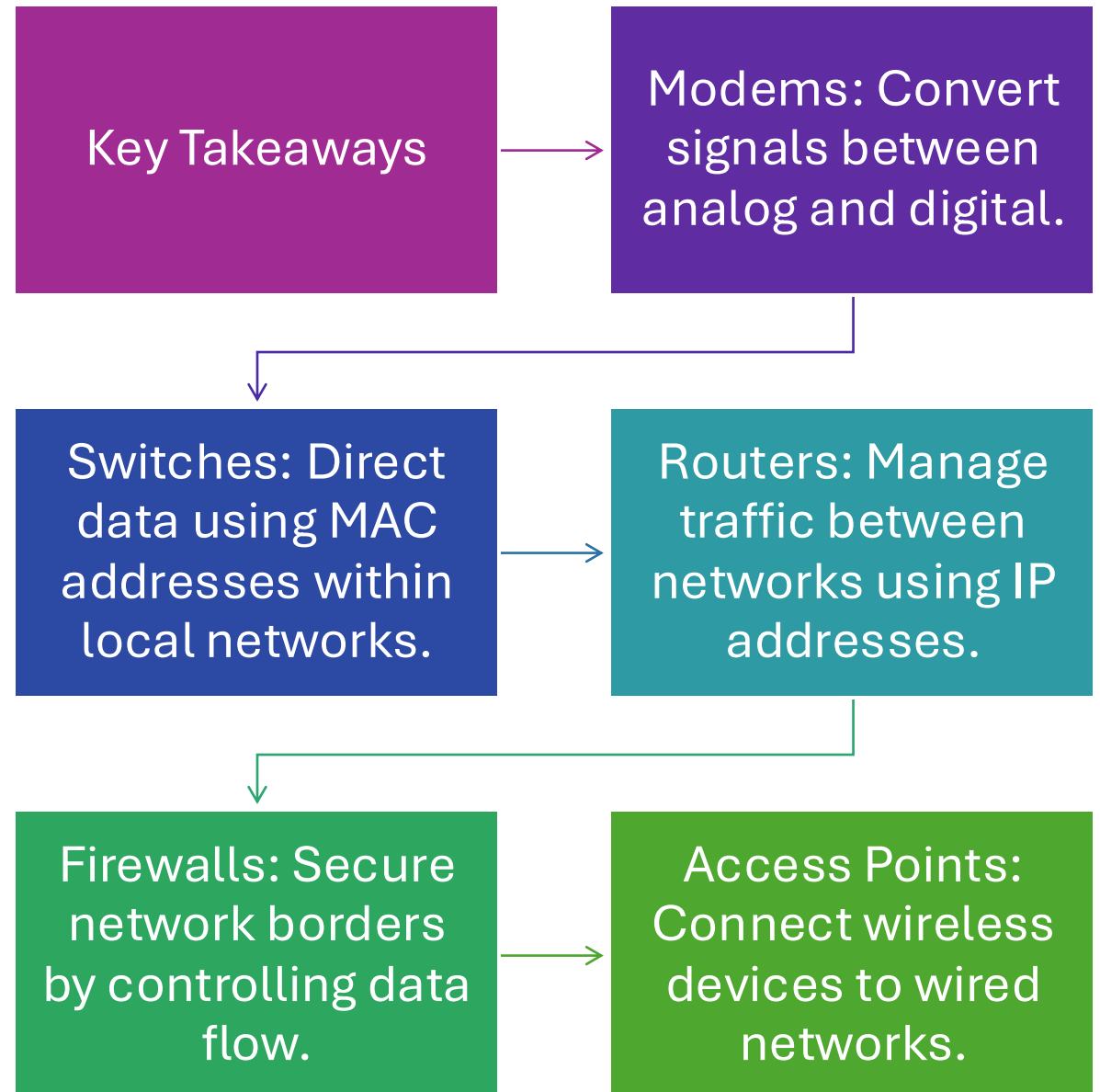
- Firewalls provide security by controlling traffic between networks.
- Enforce strict policies based on connection rules.
- Example: Border firewall between an internal network and the Internet.

Access Point

- Wireless access points enable wireless devices to connect to wired networks.
- Use antennas and transmitters to broadcast Wi-Fi signals.
- Common in home and business networks.



Summary



Practice Questions

Practice Question 1

You are concerned about outside individuals' access to your network and would like to restrict this access using a network device. Which of the following devices would best meet this need?

- A. Firewall
- B. Router
- C. Switch
- D. Access Point

Practice Question 2

You are helping a user troubleshoot the network connection on their desktop computer. You examine the computer, and it seems to be functioning normally. When you examine a network card, you determine that the cable is plugged in correctly, but the light is not on, indicating that there is a problem with the connection to the next network device. What type of network device should you check next?

- A. Router
- B. Access point
- C. Switch
- D. Firewall

Network Devices



Exploring the Key Components of Modern Networks

Thomas Holt Russell, M.Ed. Hon D. (Cybersecurity