



Black Simmental
PRODUCTION SALE
 Start Selling Sat. Feb. 3rd 2024 - 2:00 pm CT
 Sale Will be Held at the Ranch

- Performance Tested
- Purebred to 1/2 bloods
Bred for calving ease and moderate frame
- All blacks homozygous or heterozygous verified.

SELLING
50 YEARLINGS
60 OPEN HEIFERS

L46 Pure Bred Slim



L46 PB AN SIRE:PAYWEIGHT DAM:C44 B
 DATE:4/4/23 B WT:70 ADJ WW:650
 EPDS: CE:13.4 BR:-1.3 WW:73.2 YW :115.9
 MCE: 8.5, MM:29.3, MWW:66.6

L83 Pure Bred SIM



L83 BULL PB SM SIRE:JTL G73 DAM:D200 B
 DATE:4/8/23, B WT:80 ADJ WW:663
 EPDS:CE11.Y6 BR :1.4 ,WN:87,YW:124.3,
 MCE:7.1, MM:24.1, MWW:67.1 API:145
 TI:86

L99 Pure Bred SIM



L99: PB SM SIRE:KBHR HIGH ROAD, DAM:H72,
 B DATE:4/9/23,B WT:75, ADJ
 WW:646 ,EPD'S CE:12.54,BR:-7.7,WN84.7,YW:117
 MCE:5.6,MM17.2,MWW:58.5
 API:145,TI:83

L84 1/2 AN 1/2 SIM



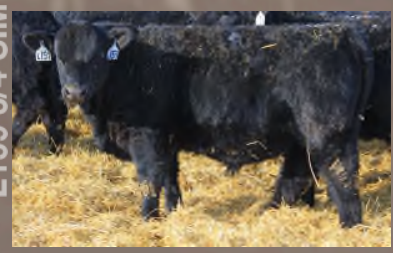
L84: 1/2 AN 1/2 SM BULL SIRE:BASIN PAY-
 WEIGHT DAM : E239, B DATE:4/8/23
 ,B WT:83 ADJ WW:663 EPDS: CE 9.6
 ,BR:2.1 ,WN:83.3,YW:127.3,MCE:7.1,MM:28.2,M-
 WW:68.8,API:130, TI:79

L19 3/4 AN



L19 3/4 ANGUS BULL SIRE:PAYWEIGHT DAM
 :JTL C47 B DATE:3/30/23 BWT:78 ADJ
 WW:609 EPDS:CE13.3, BR:-.6, WN:73.2 YW
 116.4, MCE:9, MM:30.3,MWW:67.3
 API:130 TI:71

L159 3/4 SIM



L159 3/4 SM BULL SIRE:JTL H101 DAM:F866 B
 DATE:4/17/23 BWT:81 ADJ WW:667
 EPDS: CE:12.3 BR:2.5 WN:73.8 YW:111.2 MCE:6
 MM:18.2 MWW:54.4 API:120 TI:73

Directions to Ranch:
 I-94, Exit 123, South to Almont, 3/4 miles south of Almont (till blacktop ends) 3 1/2 miles west turn right 2 miles to ranch.



Please Join us for Lunch After the Sale

For more information please call:

JAY & TRACY LARSON

5370 County Road 137 • Almont, ND 58520 • (701) 214-8289 • (701) 843-7515
 Email: larsontl@westriv.com For more pictures check out our website: www.larsontlranch.com