

CHASING M2

FREEDOM to ATTACHMENT



www.chasing.com

In Canada, visit us at www.eaStar.online

CHASING M2 is a portable underwater ROV/Drone designed for professional users and industrial applications. M2 has 8 Vectored Thrusters layout which allows the OMNI movement in all directions. The Maximum speed is 3 Knots, depth is 100 meters (330 FT) and the maximum horizontal radius is 200 meters (660FT). Compatible with sophisticated attachments such as Robot Claw, GoPro camera, external LED lights, and laser scaler, etc. CHASING M2 offers a built-in 4K/ 1080p and 12 megapixel EIS image stabilization camera, 4000 lumens LED lights, a swappable battery, and a removable SD memory card. The aluminum alloy compact body (weight less than 4.5KG / 10lbs) allows single-person operation and Quick-Deployment in 3 minutes. CHASING M2 is your portable, easy-use, and reliable light industrial underwater ROV.



8 Vectored-Thrusters
Layout, OMNI
movement



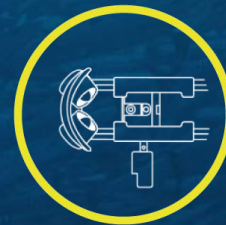
Swappable
Battery



3 Knots speed
100 meters depth rating
200 meters radius



4K+EIS Image
Stabilization,
F1.8 Aperture



Sophisticated
Attachments



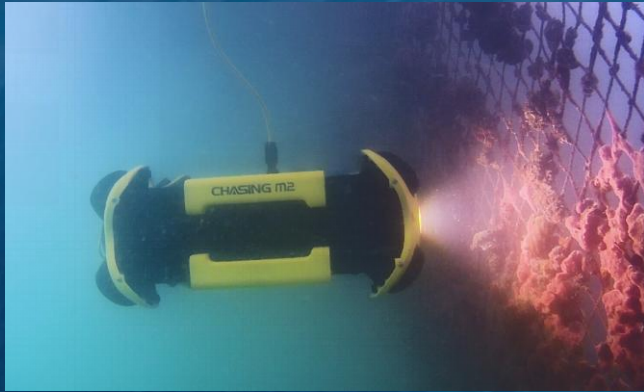
Anti-Stuck
Motor



Removable SD memory
card, download anytime
and anywhere

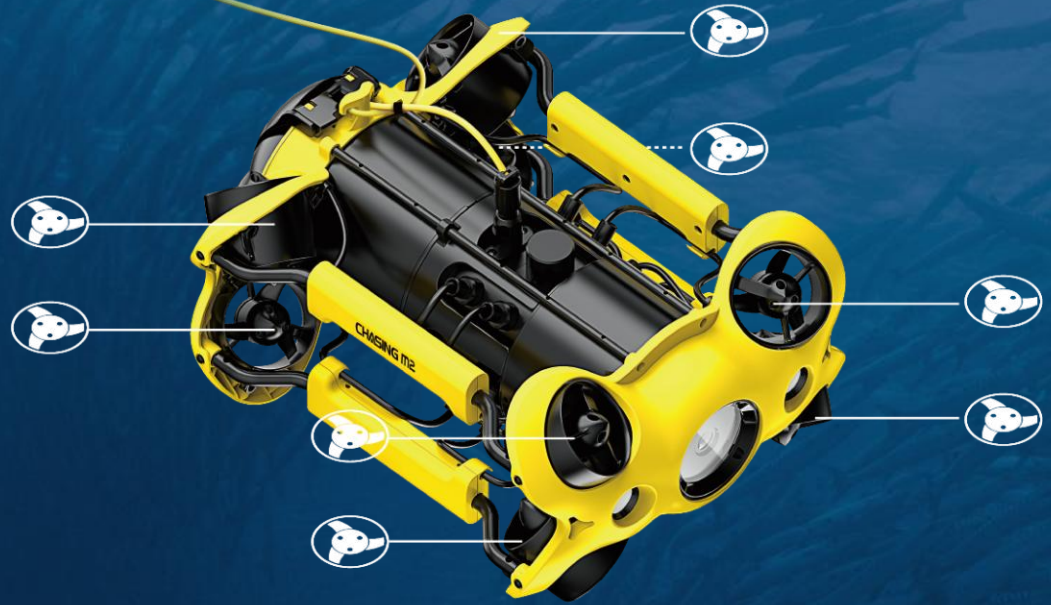


User Friendly
Interaction



- Scientific exploration
- Underwater photography
- Hull&Dock Inspection
- Aquaculture Inspection
- Underwater Search and Rescue

CHASING M2



8 Vectored-Thrusters Layout, OMNI movement

● ROV < 4.5KG / 10 lbs

CHASING M2 has 8 Vectored Thrusters layout which allows OMNI movement in all directions. The aluminum alloy compact body allows single person operation and Quick-Deployment in 3 minutes.

CHASING M2

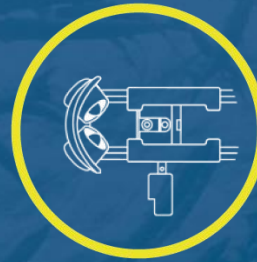


Swappable Battery

The default 97.68Wh lithium battery , Optional 200WH Battery. CHASING replaceable battery will make your operation time unlimited.



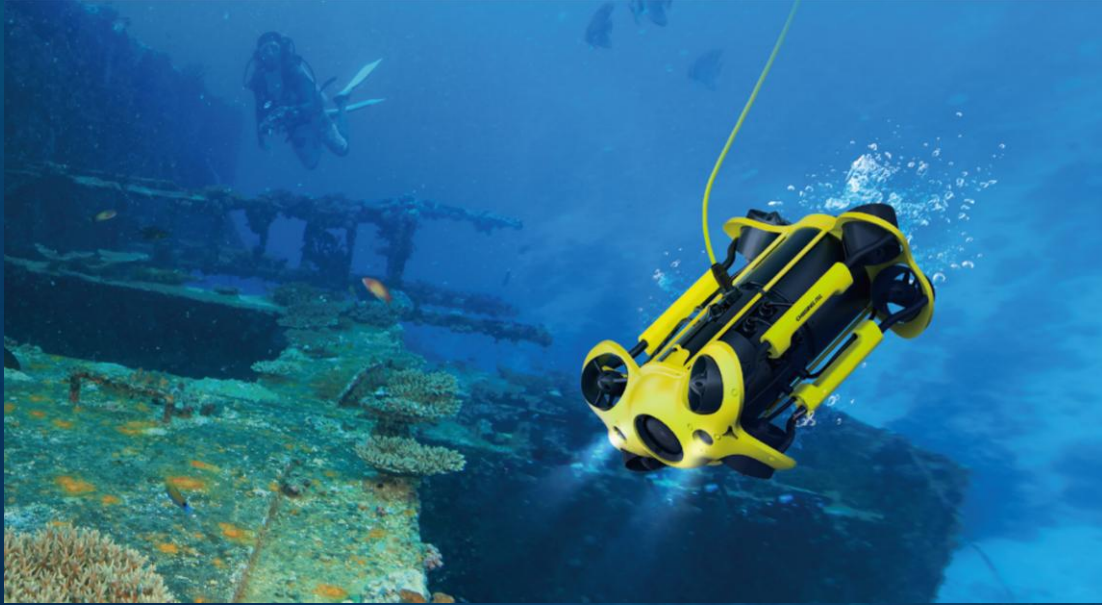
CHASING M2



Sophisticated Attachments

Compatible with sophisticated attachments such as Robot Claw, GoPro camera, external LED lights and laser scaler etc. The maximum attachable capacity is 1.5KG (3.3lbs) , designed for many different industry needs.

CHASING M2



3 Knots speed
100 meters depth rating
200 meters radius

3 knots speed allows you to move locations quickly.
The maximum horizontal radius is 200 meters
(660FT).

Diving up to 330ft allows adventures in depth.

CHASING M2



4K+EIS Image Stabilization, F1.8 Aperture

M2 offers 4K and 1080p video and 12 megapixel photos. Equipped with 1/2.3 SONY CMOS, EIS anti video-shake feature, with 4000 lumen LED lights to capture underwater details.



CHASING M2



Anti-Stuck Motor



The patented Anti-Stuck Motor technology is adopted to greatly reduce the probability of failure of the motor getting stuck in the sand, and it can operate safely and reliably in all kinds of complex underwater environments.



Removable SD memory card,
download anytime and
anywhere

The 64G SD memory card is removable, and users can choose SD cards of different capacities, up to 512G.

CHASING M2



User Friendly Interaction



Professional remote control and software APP. Depth, temperature, and other parameters can be recorded at the same time. Support live broadcast, social media sharing, taking photos while recording video, time-reducing photography, quick editing features , HDMI output. All around much improve user-experience.



CHASING E-Reel
(optional)



Professional remote control
and Software APP

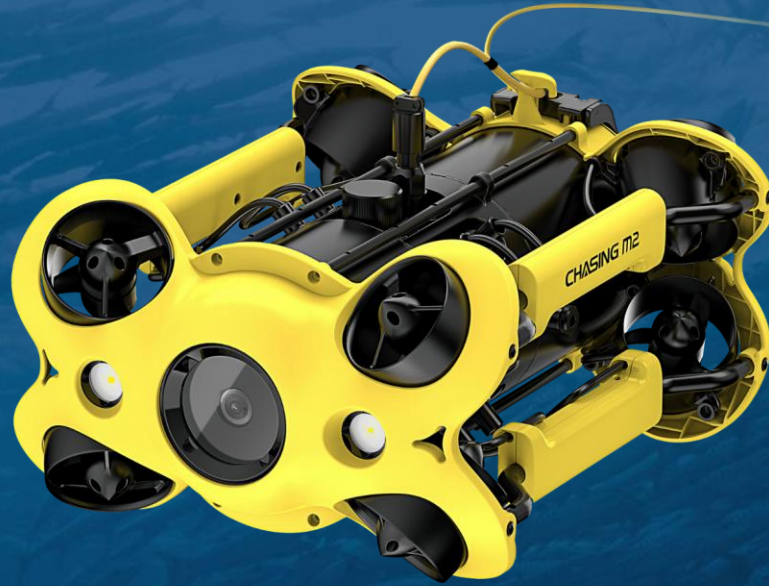


HDMI

CHASING M2



CHASING E-Reel
(optional)



ROV



Remote Control

CHASING M2

ROV	SIZE	380*267*165 mm
	WEIGHT	4.5KG
	MAX DEPTH	100 Meters
	MAX SPEED	1.5 m/s (3 Knots)
	RUNTIME	2-4 Hours
	BATTERY CYCLE LIFE	>300 Cycle
	Operating Temperature	-10°C~45°C
SENSOR	IMU	3 axis gyro/accelerometer/compass
	DEPTH SENSOR	≤±0.25m
	TEMPERATURE SENSOR	≤±2°C
CHARGER	POWER	2.9A/25.2V
	CHARGING TIME	2H
LED	BRIGHTNESS	2*2000 Lumens
	COLOR TEMPERATURE	5000K~5500K
	CRI	85
	DIMMING	THREE GEARS

CAMERA	CMOS	1/2.3 (SONY)
	LENS	F1.8
	FOCUS	1m
	ISO RANGE	100-6400
	FOV	152
	MAX RESOLUTION	12 Meg Pixel
	FORMAT	JPEG/DNG
	VIDEO	4K@30Fps 1080P@30Fps/Slow Motion (120Fps) 720P@30Fps/Slow Motion (240Fps)
	VIDEO STREAM	60M
	VIDEO FORMAT	MP4
SD Card	64G	

An underwater scene featuring a large, rusted metal structure, likely a shipwreck, covered in marine life. Several divers are visible swimming around the structure in the deep blue water. The lighting is dim, creating a mysterious and historical atmosphere.

CHASING

Chasing-Innovation Technology Co., Ltd.
www.chasing.com