

QUESTIONS YOUR DESIGNER WILL ASK. NOW WHEN THE INEVITABLE MOMENT COMES, YOU'LL BE READY.

(Use a separate paper to answer these if you need to.)

How many people are in your household *now*?
In five years? _____ In ten years? _____
What are their current ages? _____
Any pets? _____

What kind of cooking do you want to do?
 Basic meals Baking
 Gourmet Canning None

Where do you want your family to eat their meals?
 Kitchen Dining Room Bar
 Other _____

What activities do you want to take place in your kitchen?
 Homework Watching TV Paying Bills Crafting
 Hobbies Hanging Out Office Work Sewing
 Jigsaw Puzzles with Pictures of Covered Bridges
 Other _____

What type of entertaining do you want to do?
 Casual Get-togethers Holiday Meals
 Dinner Parties Cocktail Parties Not Much
 Other _____

What large appliances do you plan to replace?
 Stove Dishwasher Refrigerator
 Other _____

What do you like most about your current kitchen? _____
What things about your current kitchen drive you batty? _____
What do you want to be able to do in your new kitchen that you can't do today? _____

What small appliances do you use regularly?
 Blender Microwave Toaster Electric Griddle
 Mixer Juicer Coffee Maker Crock Pot
 Other _____

Where do you want to be able to store these small appliances?
 On the Countertop Inside Cabinets Pantry
 Other _____

Do you recycle? Y N If it's easy
Do you need a place for linens? Y N Maybe
Serving Trays? Y N Maybe Pet Food? Y N
Do you like to display china, or collectibles? Y N Maybe

When you have interesting or pretty display items, would you rather:
 put them out in the open, on shelving, or;
 keep them behind glass doors?
Do you tend to keep your spices:
 nicely organized, or;
 jumbled in a drawer?
Are the recipes you follow usually:
 in an actual cookbook lying open on the counter, or;
 found online and displayed on an iPad® (or similar device)?

Are there special considerations your designer should know?
Dietary? _____
Physical? _____
Other? _____



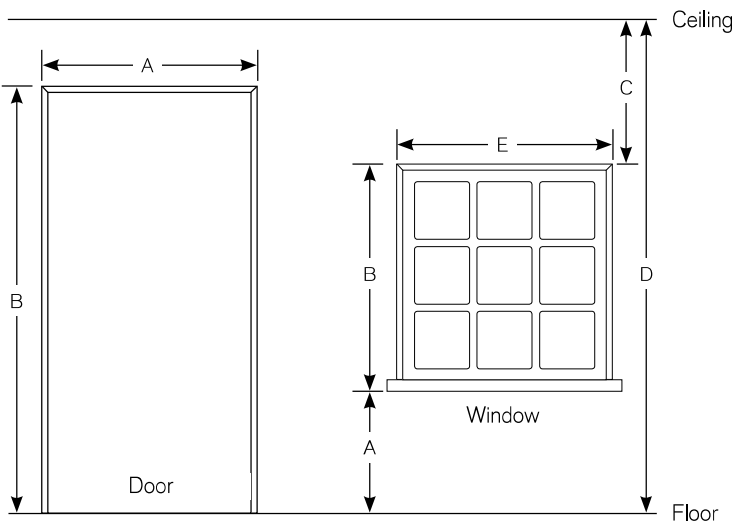
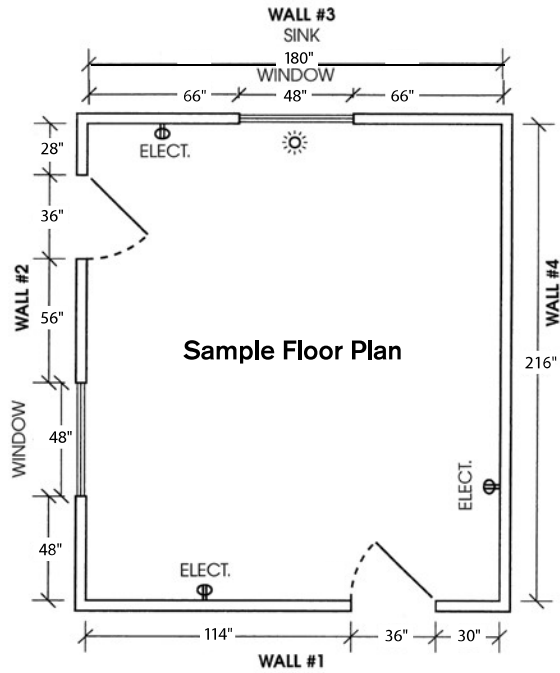
KraftMaid Cabinetry. ©2015 Masco Cabinetry LLC. All Rights Reserved.
iPad® is a registered trademark of Apple Inc.

KM-TMVTPO215

A rough drawing of your space is useful and will help us with the design process. See below for a sample floor plan. Once you have dimensions and a basic sketch of your space, transfer the information to the grid on the next page of this guide. Here are some helpful hints to get you started.

Tips for Measuring Your Space

- Use a pencil to facilitate easy changes
- Measure in inches only
- Be sure to note all fixtures and utilities (with dimensions)
- Also note all electrical outlets/switches (with dimensions)
- Include location and size of windows and doors
- Note the size and location of existing appliances
- Indicate which way doors swing and into what rooms
- Breaks in walls and obstructions should also be noted
- Denote ceiling height and indicate any transitions, soffits and/or vents



How to Measure Windows and Doors

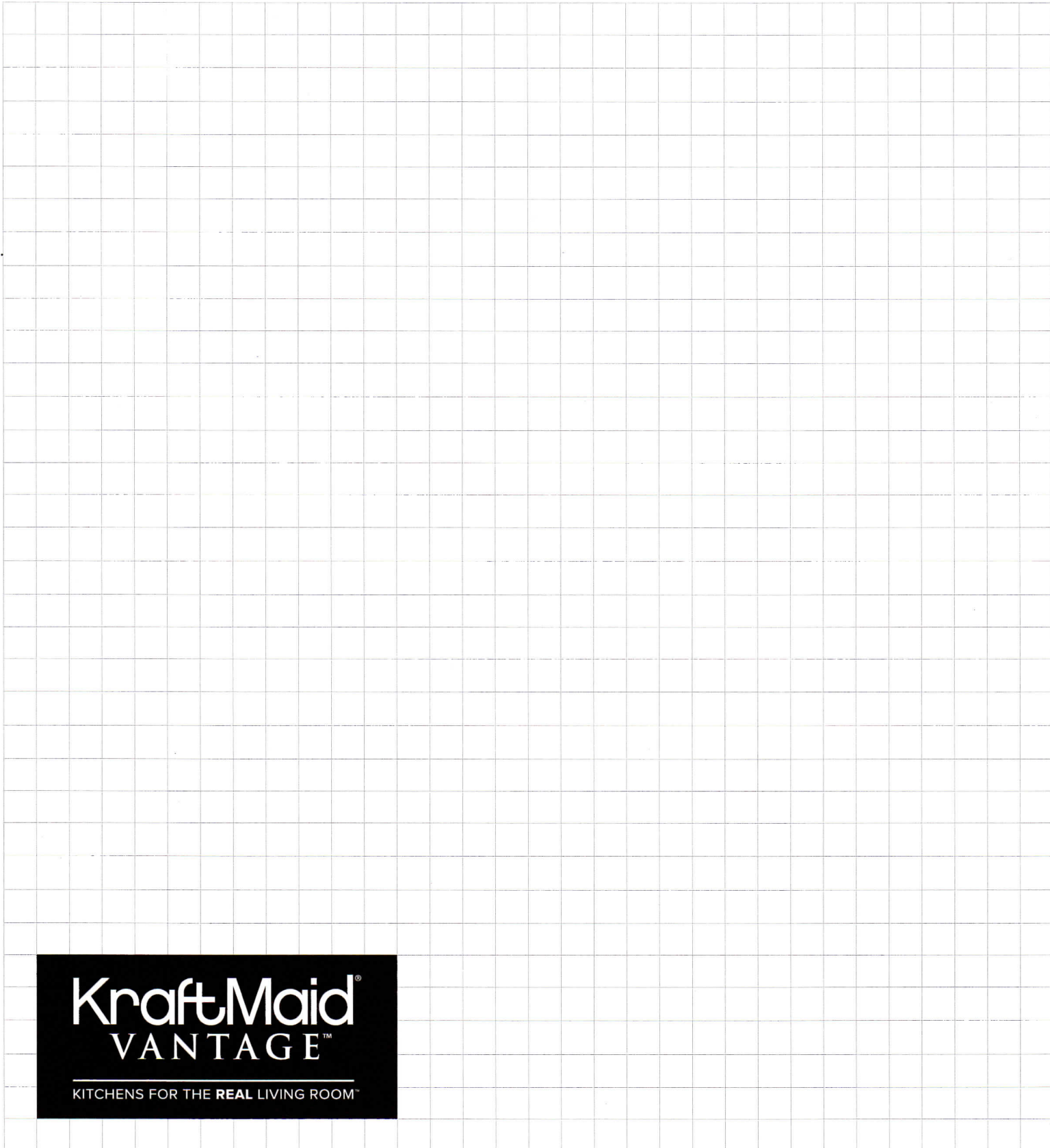
Measure each door and window and record in the grid below. Measurements should be from the outside edges of the window/door – trim to trim. All dimensions should be in inches.

	Measurement A Width of door	Measurement B Height of door
Door 1		
Door 2		
Door 3		
Door 4		

	Measurement A Floor to underside of window sill	Measurement B Underside of window sill to top of window molding	Measurement C Top of window molding to ceiling	Measurement D Floor to ceiling	Measurement E Window width from outside molding to outside molding
Window 1					
Window 2					
Window 3					
Window 4					

LET'S GET STARTED. SKETCH THE FLOOR PLAN OF YOUR CURRENT KITCHEN.

1. Draw it as if you were looking down from the ceiling. Like a blueprint.
2. Indicate the window(s), doorway(s), and where the appliances are right now.
3. Take rough measurements to increase the accuracy of your sketch, but don't worry about being exact—that comes later.
****Also, be sure to measure and note the ceiling height.**



KraftMaid[®]
VANTAGE[™]

KITCHENS FOR THE REAL LIVING ROOM[™]