

ENHANCED VIDEO PLAYER FOR POLICE INVESTIGATORS



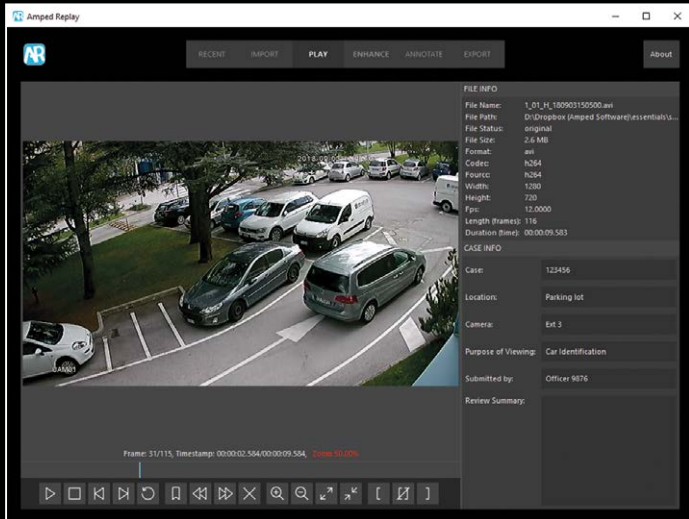
AMPED
REPLAY

VIEW VIDEO EVIDENCE FASTER AND MAKE DECISIONS QUICKER

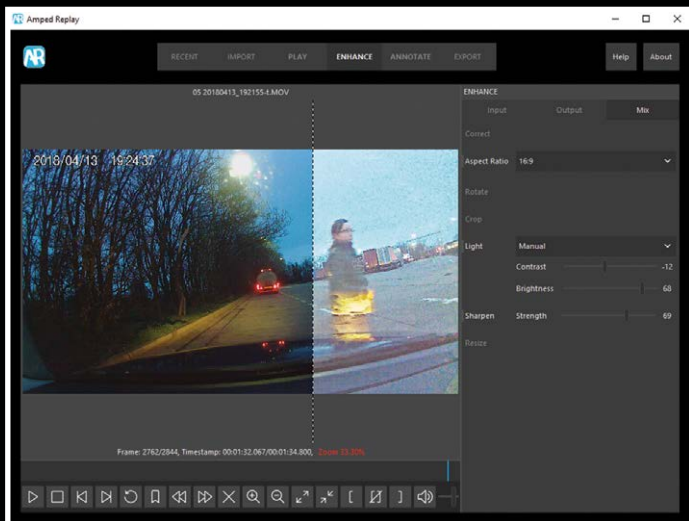
- CONVERT AND PLAY VIDEOS FROM PROPRIETARY CCTV/DVR FORMATS, BODY WORN, DASH CAM, MOBILE PHONES, COVERT VIDEO, DRONES, SOCIAL MEDIA
- APPLY QUICK ENHANCEMENTS TO IMAGES
- REDACT AND ANNOTATE IMAGES FOR INVESTIGATIONS AND MEDIA RELEASE

Empowering investigators, detectives, frontline officers, and first responders to conduct a first level analysis of their video evidence

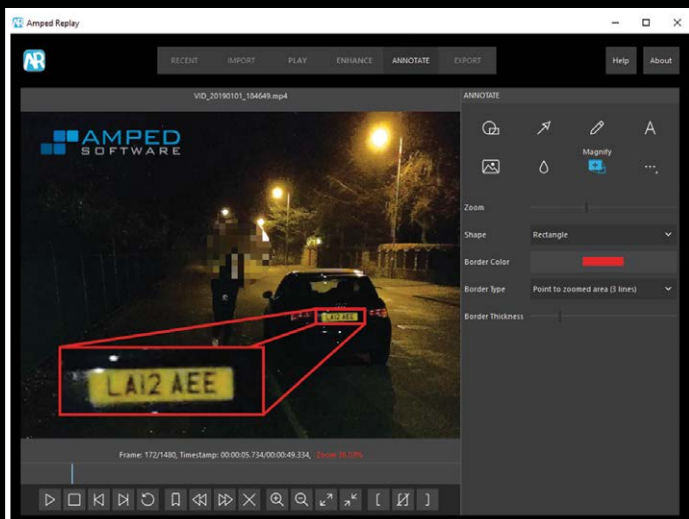
ONE MODERN AND EASY-TO-USE TOOL TO PLAY VIDEO EVIDENCE FINDING CLUES FASTER AND SPEEDING UP INVESTIGATIONS



- Convert, play and view video with no need for legacy tools or proprietary player software
- Powered by Amped Software's unique CCTV video conversion engine
- Output processed video to a standard format for presentation



- Correct aspect ratio and interlaced video
- Easily crop, resize, and rotate images and videos
- Perform basic enhancement on images and videos to see better faces, license plates, and other objects



- Annotate images with text and arrows, and add an organization logo
- Perform real-time magnification of subjects or areas of interest
- Quick and easy redaction to protect victims or hide other subjects and objects

BENEFITS FOR INVESTIGATORS

- Perform simple common tasks needed to analyze video evidence during initial stages of investigations
- Eliminate the need to search for and download legacy or proprietary players
- Quickly get an image out to the media for identification or public appeals
- No longer have to rely on office hours and the availability of dedicated units
- Provides independence to front line staff for viewing video outside of dedicated unit hours - video can be viewed and processed immediately

BENEFITS FOR FORENSIC VIDEO LABS

- Decreased case backlogs; takes away basic low-level tasks to allow experts to work on cases that require expertise and advanced technical skills
- Simple peer review capability of all investigators' processing if required, with automated reporting
- Reassurance that investigators are processing video correctly through a controlled and restricted tool set
- Powered by the trusted Amped Software engine that uses scientifically validated tools to ensure forensic integrity

BENEFITS FOR THE ORGANIZATION

- Can be used throughout the justice system, by police, prosecutors, and courts
- Increased productivity through the use of a dedicated desktop solution
- Reduced delays in investigations caused by technical limitations
- Reduced IT customer support requesting video playback and conversion
- Easy and streamlined installation with simple purchasing solutions
- Ensures professional output of images and videos to the public



THE AMPED ECOSYSTEM FOR FORENSIC IMAGE AND VIDEO ANALYSIS

Learn about the full line of solutions that have been developed to assist an entire organization with all investigations, starting from the field, up to the forensic lab, and then to the courtroom.



AMPED
REPLAY

For investigators and frontline officers to conduct a first level analysis of their video evidence, with quick and easy conversion, enhancement and annotation functions.



AMPED
DVRCONV

For technicians tasked with converting a great number of surveillance videos in various proprietary formats, speeding up the triage in cases such as major investigations.



AMPED
FIVE

For forensic lab experts to manage the complete image and video analysis workflow, with advanced and fully customizable processes for conversion, restoration, enhancement, measurement, presentation, and reporting, all in a single tool.



AMPED
AUTHENTICATE

For digital forensic experts to exploit the data behind digital images. Allowing analysis of image integrity, authenticity, metadata, source and history, and detection of tampering prior to its use as intelligence and evidence.

 **AMPED**
SOFTWARE

info@ampedsoftware.com
www.ampedsoftware.com