

**Joint International Council for the Missions and Evangelization(CIME) and
Executive Commission for Missions and Evangelization (CEME) Assembly**

(May 26 to June 2, 2024)

Friary of Santa Maria Draperis, Istiklal Caddesi n. 215-P.K.243 34433 Beyoğlu – Istanbul, Turkey.

Theme: “*Having the Spirit of the Lord and his holy operations* (Reg B 10:8) – an invitation to reflect on the proposed *Ratio Evangelization of the Order* given our context...”

The ultimate goal of the *Ratio Evangelizationis* of the Order (**REO**) is to strengthen our unique charismatic identity by reinforcing shared values and principles, we identify and accept collectively as a universal “*evangelizing missionary fraternity*.” These shared thrusts that we hold important as an Order, in turn, will guide each Entity or Conference, to craft its particular statute given the distinct contexts of its reality.

Objectives:

1. To review the existing missionary evangelization activities, realities, and/or context in the different entities.
2. To review the Particular Statutes of the General Secretariat for Missions and Evangelization, especially on the identity of existing structures, as well as the present directions it now pursues.
3. To be able to continue drafting the REO as guided by the working structure approved by the General Administration in the circumstances of our context, to strengthen its different relevant dimensions, and to challenge and make an appeal to the global fraternity for a renewed impetus to do distinctively our Franciscan evangelizing mission.

CIME-CEME Joint Meeting: Pre-assembly Tasks: Please read and prepare the following:

1. A letter was communicated last December 2023 to all of the Conference Secretaries for Missions and Evangelization, asking them to disseminate the soonest, the list of questions that will assist us in the drafting of the *Ratio Evangelizationis*.
2. In this connection, we are forwarding to you the latest update of the REO Part 1, made by the pool of experts tasked to assist in its drafting. The friars are to answer the guide questions for REO, Part 1 based on this updated draft.
3. Hence, you are asked again to distribute this among the different Secretaries for Missions and Evangelization of the different entities in your Conference.
4. Once, accomplished, ask the secretaries to summarize all the responses to each guide question. There are 6 guide questions asked. They have to submit them back to you, as soon as possible, not later than April 20, 2024, for you to finalize your report before the assembly.
5. From all of their contributions, make a final summary. Your final report should be grouped based on the guide questions: 1. REO Part 1:Q1 & Q2;
2. REO Part 2:Q1 & Q2;
3. REO Part 2: Q3,Q4, &Q5.

This is patterned to the program of activities below, which you are to do for the workshops.

6. We request you also to translate the summarized responses, into 3 languages: Italian, Spanish, and English using this reliable translator program, *Deepl.com/it/translator*, available for free on the net.
7. Please send us your written reports in the 3 official languages used by the Order: Italian, English, and Spanish, in Word document format on or before May 02, 2024.
8. We ask you to provide a printed copy of your summary in three languages to facilitate ease in discussion during the small linguistic group workshops. Each of the translated summaries you made

will be given to the corresponding linguistic group, which incorporates them into the tasked topic assigned.

TASKS: You are to make 2 slide presentations for presentation in the plenary during this Assembly:

1. A 10-minute presentation on your Conference, your missionary evangelization activities,/ context;
2. A 15-minute presentation on your Responses based on the guide questions given;

SCHEDULE OF ACTIVITIES:

26 May (Sunday)

JOINT CIME -CEME ASSEMBLY

ARRIVAL DAY

NOTE: Accommodation at Santa Maria Draperis, Istanbul. Please Refer to your assigned room.

27 May (Monday)

OPENING OF THE JOINT CIME-CEME ASSEMBLY

DAY 1

Moderator: _____

Liturgy c/o Istanbul Cmty

7:00 **Lauds and EUCHARISTIC CELEBRATION** (c/o House of Istanbul Community)

8:30 Breakfast / Personal Time

11:00 **Opening liturgy (Community Chapel)**

12:15 Words of Welcome from the Secretary of the General Missions and Evangelization

To be followed by a message from the Minister General (Br Massimo)

12:45 *L' Aperitivo* (pre-lunch "getting to know" activity with drinks/finger foods)

13:00 Lunch break

15:00 **OBJECTIVE, and GOAL SETTING** of the Joint Meeting CIME-CEME gathering

Instruction on the Mechanics of the Assembly

Grouping into 3 Linguistic Grouping (English, Spanish, Italian)

Tasking (Liturgy assignment: May 27 -English; May 28-Spanish; May 29- Italian)

Each group should select a Moderator & a Presenter/Secretary

15:30 Orientation and presentation of Turkey International Community (Turkey House Guardian)

16:15 Open Forum/short break

16: 30 1st part (10- Minute **PRESENTATION of ME Activities by the Conference ME Secretaries):**

1. SUD- SLAVICA

2. NORD- SLAVICA

3. CONFRES

4. COMPI

5. ANGLOFONA-ESC

6. CUSTODIA DI TERRA SANTA

17:30 Coffee Break

18:00 2nd part (10-Minute **PRESENTATION of ME Activities by the Conference ME Secretaries:**

7. BOLIVARIANA

8. MEXICO, CENTRA AMERICA

9. BRASILIANA E CONO SUR

11. AFRICANA

10. EAC

12. SAAOC

19:00 **END OF DAY 1**

19:15 Vespers

20:00 Dinner

20:30 Recreation /time for meetings

28 May (Tuesday)

JOINT CIME-CEME ASSEMBLY

DAY 2:

Moderator: _____

Liturgy c/o English Linguistic Group

7:00 **Lauds and EUCHARISTIC CELEBRATION** (c/o House of Istanbul Community)

8:30: Breakfast / Personal Time

9:30 Presentation of the General Sec for ME Thrusts as well as the Background and working progress of the *Ratio Evangelizationis*

10:15 Open Forum /Clarifications from the Brothers regarding topics/process presented

10:30 Coffee Break

11:00 Presentation of the Crafted *Ratio Evangelizationis* (c/o Expert Committee Update)

11:30 Open Forum /Clarifications from the Brothers regarding topics/process presented

11:45 **1st Part (15-minute) PRESENTATION REPORT on Questionnaires by the Conf. ME Secretaries:**

1. SUD- SLAVICA

2. NORD- SLAVICA

3. CONFRES

4. COMPI

12:45 End of Morning Session

13:00 Lunch Break/ Mid-Day Rest

15:00 **2nd Part (15-Minute) PRESENTATION REPORT on Questionnaires by the Conf. ME Secretaries:**

5. ANGLOFONA-ESC

6. CUSTODIA DI TERRA SANTA

7. BOLIVARIANA

10. MEXICO, CENTRA AMERICA

8. BRASILIANA E CONO SUR

11. AFRICANA

9. SAAOC

12. EAC

17:30 Coffee Break

18:00 **Breaking into 3 LINGUISTIC GROUPS:** with the following instructions:

Listening to all presentations given, what are the important points and considerations you want to include in the drafting of the REO? Categorize your answers according to the guide questions presented.

19:00 END OF DAY 1 SESSION

19:15 Vespers

20:00 Dinner

20:30 Recreation /time for meetings

29 May (Wednesday)

JOINT CIME-CEME ASSEMBLY

DAY 3:

Moderator: _____

Liturgy c/o Spanish Linguistic Group

7:00 **Lauds and EUCHARISTIC CELEBRATION** (c/o Italian language group)

8:30: Breakfast / Personal Time

9:30 **Group Instruction in the Plenary): LINGUISTIC GROUP INSTRUCTION:**
ACTIVITY on REO Part 1 Questions # 1 & 2:

QUESTIONS:

- 1. Do you think the first part of the structure of the Ratio Evangelization for the Order (REO) is useful, applicable, and challenging in your context? Please explain your answer.*
- 2. Are there any clarifications, suggestions, or comments to report on the structure presented?*

9:45 **Breaking into 3 LINGUISTIC GROUPS (Activity: REO Part 1, Questions # 1 & 2)**

10:30 Coffee Break

11:00 **Presentation of Group Work Activity: (Activity: REO Part 1, Questions # 1 & 2)**

12:45 End of Morning Session

13:00. Lunch Break /Mid-Day Rest

15:00 **LINGUISTIC GROUP INSTRUCTION:**

ACTIVITY on REO Part 2, Questions # 1 & 2:

QUESTIONS:

- 1. List the possible avenues of missionary evangelization in which your entity/conference is involved.*
- 2. In your entity/conference, how do you strengthen and/or enable this ministry from the charismatic identity? For example, concerning youth culture and the digital continent, parishes/sanctuaries, in the world of health, education, culture and science, etc. Cite Order or Church documents to support your responses/reflections.*

15:15 **Breaking into 3 LINGUISTIC GROUPS (Activity: REO Part 2, Questions # 1 & 2)**

17:30 Coffee Break

18:00 **Presentation of Group Work Activity: (Activity: REO Part 2, Questions # 1 & 2)**

19:00 **END OF DAY 2 SESSION**

19:15 Vespers

20:00 Dinner

20:30 Recreation /time for meetings

30 May (Thursday)

JOINT CIME-CEME ASSEMBLY

DAY 4 :

Moderator: _____

Liturgy c/o Italian Linguistic Group

7:00 **Lauds and EUCHARISTIC CELEBRATION** (c/o Spanish linguistic group)

8:30: Breakfast / Personal Time

9:30 **LINGUISTIC GROUP INSTRUCTION:**

ACTIVITY 3 on REO Part 2, Questions # 3, 4 & 5:

QUESTIONS:

- 3. How can you strengthen Franciscan missionary evangelization in these dimensions in your context? If possible, cite Order or Church documents to support your responses/reflections, e.g., silent witness of life that renews our presences, presence and proclamation among and with the*

poor our teachers, presence in post-secularized and post-Christian environments, presence and dialogue between Christians and non-Christians, mission for reconciliation and peace, co-responsibility in mission with the laity and with the Franciscan Family.

4. How should you witness, proclaim, and do your mission as Friars Minor in your realities? What do you want to appeal to challenge the world fraternity for a "renewed impetus" to carry out a "distinctively Franciscan" evangelizing mission? Cite Order or Church documents to support your responses/reflections.

5. How do you witness the Gospel in an entity or a fraternity of elderly or "burned out brothers"

9:45 **Breaking into 3 LINGUISTIC GROUPS (Activity on REO Part 2, Questions # 3, 4 & 5)**

10:30 Coffee Break

11:00 **LINGUISTIC GROUP WORK REPORTING: (Activity on REO Part 2, Questions # 3, 4 & 5)**

11:30 **Breaking into 3 Linguistic groups**

Instruction: Each linguistic group will be assigned a topic to summarize, by drawing-lot, according to the following assigned topic:

1. REO Part 1: Questions # 1 & 2
2. REO Part 2: Questions # 1 & 2
3. REO Part 2: Questions # 3, 4,& 5

12:45 End of Morning Session

13:30 Lunch Break/ Mid-Day Rest

15:00 Presentation by the Linguistic Group Assigned on: **REO Part 1: Questions # 1 & 2** (30 mins)

15:30 Open Forum (Questions and Suggestions for 30 mins)

16:00 Presentation by the Linguistic Group Assigned on: **REO Part 2: Questions # 1 & 2** (30 mins)

16:30 Open Forum (Questions and Suggestions for 30 mins)

17:30 Coffee Break

18:00 Presentation by the Linguistic Group Assigned on: **REO Part 2: Questions # 3,4, & 5** (30 mins)

18:30 Open Forum (Questions and Suggestions for 30 mins)

19:00 **END OF DAY 2 SESSION**

19:15 Vespers

20:00 Dinner

20:30 Recreation /time for meetings

31 May (Friday)

JOINT CIME-CEME ASSEMBLY

DAY 5:

7:00 **Lauds and EUCHARISTIC CELEBRATION** (c/o GSME/CIME)

Words from The General Secretariat for Missions and Evangelization

8:30: Breakfast / Personal Time

9:00: Departure for:

PILGRIMAGE TO PLACES OF WORSHIP / VISITATION OF THE FRIAR'S MINISTRY

(9:00 AM to 18:00)

18:00 Return to Istanbul Friary
19:15 Vespers
20:00 Dinner
20:30 Recreation /time for meetings

1 June (Sat day)

DAY 6:

7:00 **Lauds and EUCHARISTIC CELEBRATION** (c/o Istanbul Community)
8:30: Breakfast / Personal Time

9:00: Departure for:

PILGRIMAGE TO PLACES OF WORSHIP / VISITATION OF THE FRIAR'S MINISTRY

(9:00 AM to 17:00)

17:00 Return to Istanbul Friary

18:00 CLOSING LITURGY (With the Dervishes Sufi: Common prayer)

(NOTE: TO BE COORDINATED AND SCHEDULED TO THE GUARDIAN IN ISTANBUL)

19:15 Vespers
20:00 Dinner
20:30 Recreation /time for meetings

02 June (Saturday)

JOINT CIME-CEME ASSEMBLY: DEPARTURE DAY

DAY 7:

Community Schedule to follow

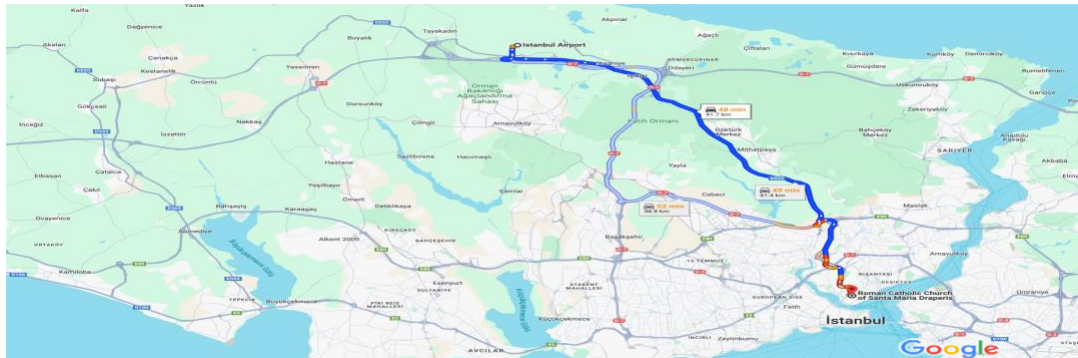
FINAL REMINDERS:

1. Please process your travel documents this early. Requirements are highly dependent on your country of origin. For those needing visas, it is best to seek advice from your travel agency this early. You can also visit the Republic of Turkey, Ministry of Foreign Affairs website- <https://www.mfa.gov.tr/visa-information-for-foreigners.en.mfa> Please bring a COVID vaccination card during travels.
2. For those needing the visa, you need an invitation letter from the community. Contact the following:
P. Eleuthere Makuta, OFM (House Guardian): makutaba@yahoo.fr
P. Felianus Dogon, OFM (House Bursar): fellyanusdogon@gmail.com
3. Upon arrival at Istanbul Airport, just take a taxi. There are many available taxis at the airport. Most drivers speak in English. You can pay in dollar bills, but it is more expensive. Better, have your money changed at the airport. The fare from the airport to our place is roughly 60 to 70 Turkish Lira, with a travel time of about 50 minutes, but this depends on the traffic.




Google Maps

Istanbul Airport to Roman Catholic Church of Santa Maria Draperis

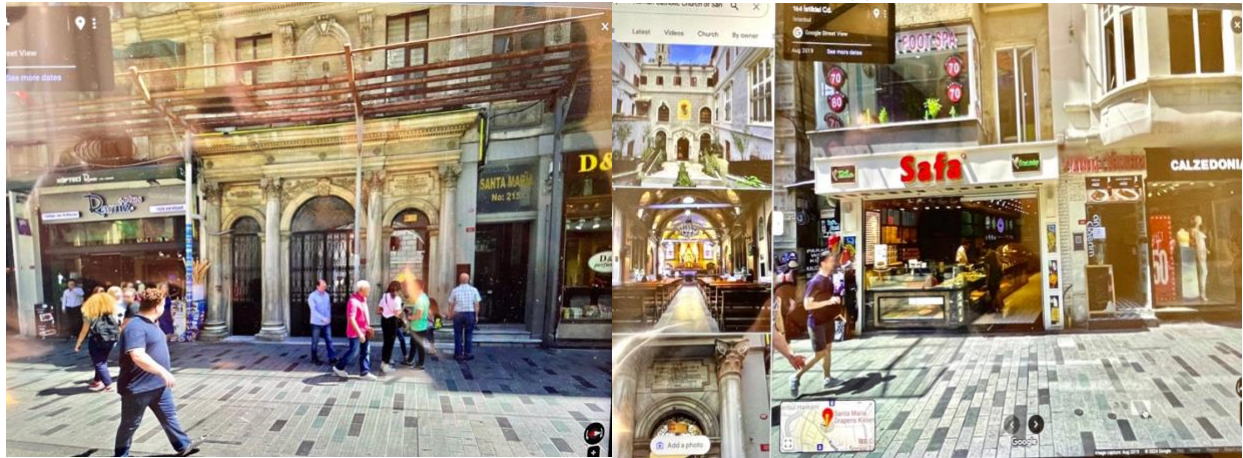
Drive 41.7 km, 48 min



Map data ©2024 2 km

- | | | |
|---|--|--------------------------|
|  | via D020
Fastest route now due to traffic conditions | 48 min
41.7 km |
|  | via O-7 and Kuzey Marmara Otoyolu/O-7
Some traffic, as usual | 52 min
48.8 km |
|  | via D020 and Hasdal-Okmeydanı Bağlantısı
Some traffic, as usual | 49 min
41.4 km |

4. You can use a Google map to go to the place. See some pictures below of the entrance gates entering the church/venue site, and some of the establishments visible on the opposite side.



5. The lira (Turkish: Türk lirası; sign: ₺; ISO 4217 code: TRY; abbreviation: TL) is the official currency of Turkey. There are currently bills of 1, 5, 10, 20, 50, 100 and 200 **Turkish Lira**. Coins are 1 Lira and 50, 25, 10, 5 and 1 kuru (100 kuru (YKR) = 1 TL). **1.00 US Dollar = 30.27 Turkish Lira; 1.00 Euro = 32.98 Turkish Lira (varies)**
6. The type of plugs and sockets found in Turkey are Type C or Type F so you will need an adaptor or travel plug to plug your appliances and devices into the wall socket if your country uses a different plug type.



7. The community will provide you with bedding, linens, and towels. The rest, you have to bring your own including your basic toiletries and maintenance medicines.
8. The end of May to June's arrival signals a subtle increase in average high temperatures, moving from [May's](#) agreeable 20.9°C / 69.6°F (spring) to a moderately hot 25.4°C / 77.7°F (summer). In Istanbul, an average low temperature of 15-20°C (59°F to 68°F) is recorded during these nights. So, you may pack lightweight clothing, and a jacket or sweatshirt for possible nights that may be cool. Of course, don't forget your habit. It is important that friar-priests bring also an alb, and that all should download the I-breviary program on a cellular phone and/or a tablet.
9. We need you to have a WhatsApp number for easy communication as a group. Also, bring your laptop computer as some materials will only be available digitally and it will surely prove useful to do your assigned tasks, especially in doing translations (for 3 languages: Ita/Eng/Spa). Hence, please install already the **DeepL translator** on your computer. It is available for free on the web.
10. Internet connection in this area is fair. The community will provide access to wifi services in the venue, but congestion is projected. If you want to have a swift and exclusive uninterrupted wifi connection for personal use, there are affordable available Pocket Wi-Fi in Turkey. Pocket Wi-Fi with unlimited 4G internet will let you stay connected anywhere in Turkey. You will also be able to share the secure, high-speed connection with up to 10 mobile devices simultaneously. Turkcell is the largest operator, with the widest coverage and fastest network speeds. Vodafone Turkey also offers extensive coverage and competitive pricing. On the other hand, Turk Telekom has a slightly smaller network coverage

We are looking forward to having a remarkable joint CIME-CEME assembly with you all!

GSME/CEME