

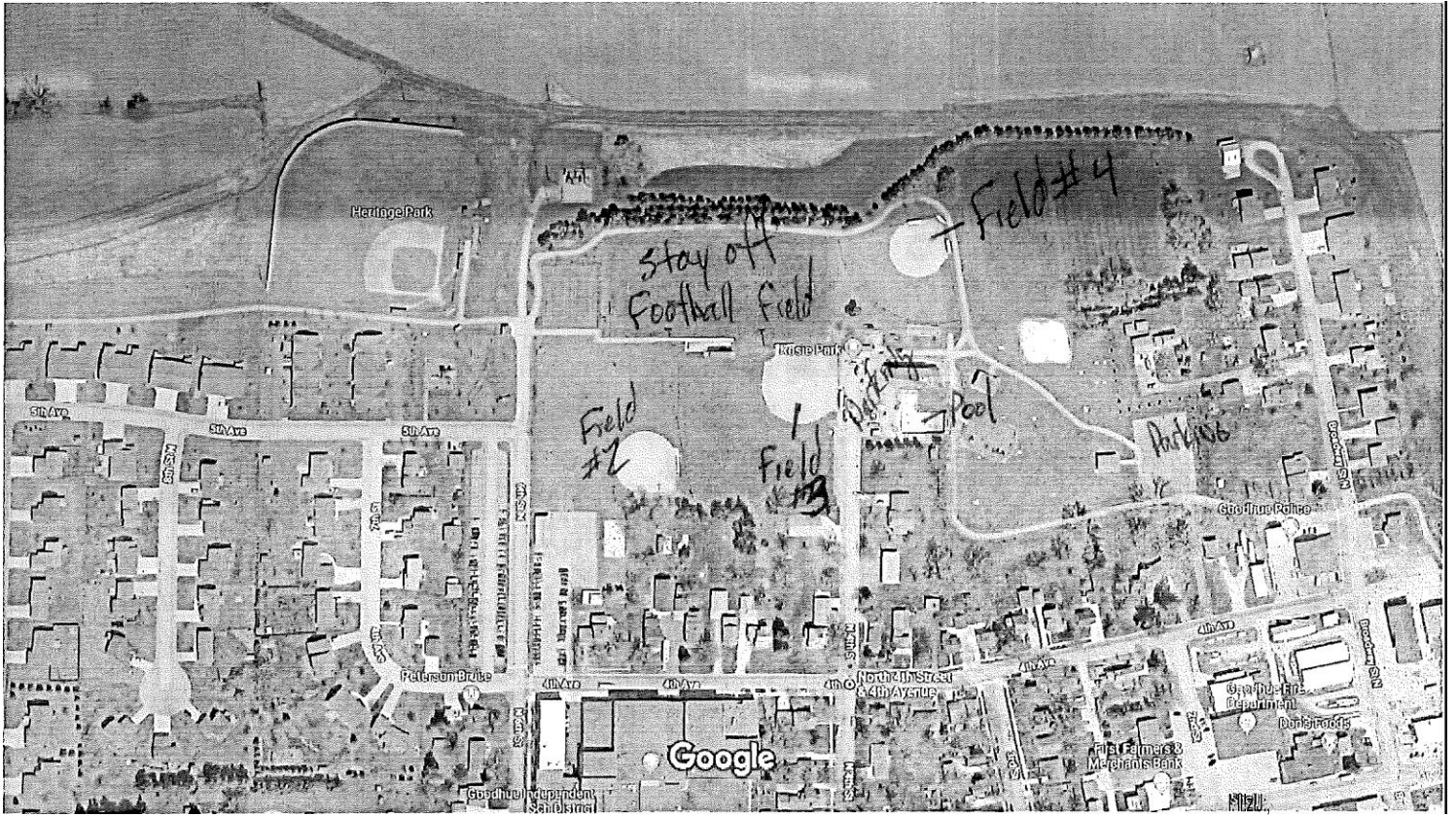
## **Goodhue 10U Baseball Tournament Rules**

- This tournament is open to anyone completing the 4<sup>th</sup> grade or younger.
- Games will be as follows: 5 innings with a 75 minute time limit on each game. No inning should start after 75 minutes.
- 7 runs per half inning limit.
- Each team will supply 1 game ball per game. The game ball should be of sufficient quality (Wilson, Rawlings, Diamond... ). No practice balls please.
- No leading off.
- Runners may steal 2<sup>nd</sup> or 3<sup>rd</sup> after the ball crosses home plate. The first violation for leaving early will be a team warning. The second will result in the runner being called out.
- Dropped 3<sup>rd</sup> strike is an out.
- A pitcher can pitch a maximum of 3 innings per game and a total of 6 per tournament (1 pitch constitutes an inning).
- No balks will be called but the umpire will make the pitcher aware if it happens.
- 10 defensive players in the field (4 outfielders).
- You must bat at least 12 uniformed players if you have over 12 players, but all players can bat if the coach chooses. Free substitutions.
- During the pitcher warm-ups (at any time) the catcher must wear a mask.
- Pitching mound should be 46 feet (discretion of the home field coach).
- Mercy rule is in effect if team is ahead by 15 runs after 3 innings, 10 runs after 4 innings.
- Courtesy runner is allowed for the current catcher at any time. The courtesy runner will be the last player in your lineup who made an out.
- No metal spikes.
- Runners must slide on all close plays.

- Runner may not advance home on passed balls behind the catcher or throw downs on steals. The runner is frozen at 3<sup>rd</sup> base unless the ball is hit into play or the runner is walked in.
- Catcher interference will be called and the batter will take their base.
- Bat Restrictions: Max diameter at the thickest part: 2 ¼" or less with unlimited weight differential and the new USA stamp on the taper. Max diameter at the thickest part: 2 5/8" or less with minus 11 weight differential and the new USA Baseball stamp on the taper. In length: 36" or less. Wood bats are allowed.
- If needed for medal placing, tournament will be :
  - 1 Head to head
  - 2 Total Runs scored
  - 3 Total Runs against
- Please no outside coolers brought in. This is our fundraiser for the youth baseball-softball association.
- No field warm-ups, have your team ready to go.
- Please stay off football field.

	Field #2	Field #3	Field #4
8-9:30	10U Goodhue White vs Lake City	10U ZM vs Goodhue Purple	10U Kasson Mantorville vs Randolph
9:30-11	10U Goodhue White vs Randolph	10U ZM vs Lake City	10U Kasson Mant vs Goodhue Purple
11-12:30	10U Consolation (0-2)	10U 3 <sup>rd</sup> Place (1-1)	10U Championship (2-0)
12:30-2	11U Goodhue vs Medford	11U Randolph vs ZM	11U Byron vs Southern Minny
2-3:30	11U Goodhue vs Southern Minny	11U Randolph vs Medford	11U Byron vs ZM
3:30-5	11U 3 <sup>rd</sup> Place (1-1)	11U Championship (2-0)	11U Consolation (0-2)

# Google Maps



Imagery ©2019 Google, Map data ©2019 Google 100 ft

## DELAYS

Light traffic in this area

No known road disruptions. Traffic incidents will show up here.