



Cheetah Math



My Full Name: _____

First

Last



Teacher: _____

PTA SPONSORED



Someone may read the problem to you and demonstrate a **SIMILAR** problem, but you should work the problems yourself.

SCORING: 40 paw points per page. Two for Full Name and Teacher and 38 for problems. Paw values are printed before each problem. Every problem varies, so read each carefully!

Due by 11/21/2025



2 paws for correct answer

1. Laura's little sister erased some numbers from her homework. What are the missing numbers?

1.7 is less than 1.____

0.23 is greater than 0.____3



1/2 paw for each correct answer

2. Multiply or divide to find the correct answer.

A. $808 \div 8 =$ _____

B. $87 \times 6 =$ _____

C. $108 \div 6 =$ _____

D. $111 \times 11 =$ _____



1 paw for work shown

1 paw for correct answer

3. For your birthday your grandmother sent you a box of 48 chocolates. You were planning to eat them all by yourself, but your parents have other plans for the candy. They want you to share the candy with some friends. How many **FRIENDS** can you invite over so that **everyone** (including you) gets 8 pieces of chocolate each? (HINT: 2 step problem)

_____ friends



1 paw for work shown.

1 paw for correct

4. Ms. Oliver bought 9 tickets to the rodeo for a total of \$63.00. If each ticket cost the same amount, what was the cost of each ticket?

\$_____ per ticket



1 paw for work shown.

1 paw for correct

5. The chart is a price list for team souvenirs sold at the stadium. Not including tax, how much money would the souvenir stand make by selling 10 T-shirts, 5 caps, and 15 mugs?

\$_____

ITEM	PRICE
T-SHIRT	\$16.00
CAP	\$12.00
BANNER	\$8.00
MUG	\$5.00

4th Grade



1 paw for work shown

1 paw for correct answer

5. Ms. Oliver ran 850 yards. Ms. Saenz ran a half mile.

Who ran farther? _____

1 mile = 5,280 ft

1 mile = 1,760 yards

1 yard = 3 ft

By how much? _____ yards



1 paw for work shown

1 paw for correct answer

6. Ms. Fox's family drove 86 miles from Austin to San Antonio, 197 miles from San Antonio to Houston, and 53 miles from Houston to Galveston. About how many miles did they drive in all? (Round to nearest tens place)

_____ miles



1/2 paw for each work shown

1/2 paw for each correct answer

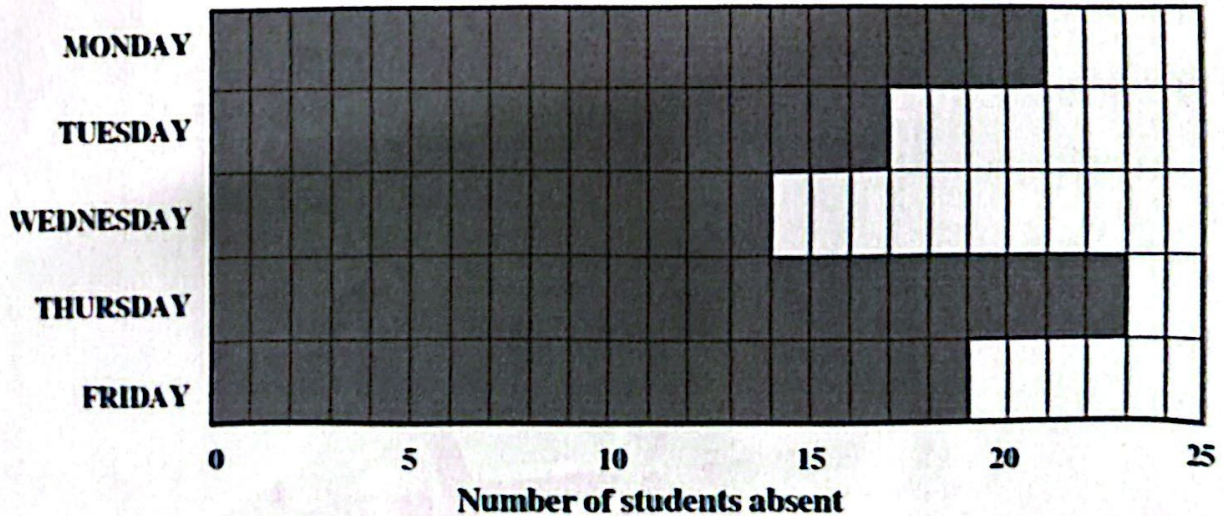
7. The graph below shows the number of student absences during a week in March.

A. On which 2 days were **exactly** 37 students absent? _____ and _____

B. How many fewer students were absent on Thursday than on Monday and Tuesday combined?

_____ fewer students

STUDENT ABSENCES MARCH 6-10



1 paw for each correct answer

8. A. Write a number with a 6 in the millions place and a 4 in the hundreds place.

B. Write a number with a 7 in the ten-thousands place and a 5 in the tens place.

**4th
Grade**



Cheetah Math

Someone may read the problem to you and demonstrate a **SIMILAR** problem, but you should work the problems yourself.

SCORING: 40 paw points total. Two for Full Name and Teacher and 38 for problems. Paw values are printed before each problem. Every problem varies, so read each carefully!

Worksheets are to be turned into the Cheetah Math box anytime this month before 8am on the due date listed.

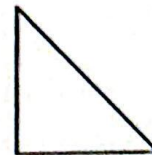
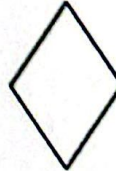


Due by 11/21/2025



1 paws for
correct answer

1. Which figure represents a pyramid? Circle your answer



2 paws for correct
answer

2. Hayley practiced for her piano recital for 68 days. About how many weeks did she practice?

_____ Weeks



1 paws for
correct answer

3. If $3 \times \underline{\quad} = 36$, what other expression could be used to find the missing number?

(Example: If $4 \times \underline{\quad} = 20$, then $20 \div 4 = 5$, 5 is the missing number.)



2 paws for correct
answer

4. Cooper bought some Pokemon cards for \$7.83, a pack of gum for \$0.75, and a book for \$5.26.

How much money did Cooper spend? _____



1 paw for each
correct answer.

5. A.) How many zeros are in the number six thousand, six? _____

B.) How many zeros are in the number fifty thousand, five hundred? _____

C.) Write a number with exactly 5 zeros in it. _____

D.) How would you write the answer to C using word form? _____



1 paw for the
correct answer.

6. Ms. Massengale is completing a number statement.

Which number below would make this a true statement?

$917,234,012 < 927,112,567 < \underline{\hspace{2cm}}$

A. 907,112,667

B. 927,112,467

C. 926,112,567

**4th
Grade**



1 paws for
correct answer

7. If a ball is a sphere, a penny is a circle, and a soda can is a cylinder, then a globe is the shape of a:



1 paw for work
shown

1 paw for correct

8. The "Cheetah Singers" just completed a 4-city concert tour. The attendance is recorded in the chart at the right.

- How many total people came to all 4 concerts?

_____ people

CONCERT ATTENDANCE	
CITY	# of People
Austin	446
Dallas	628
Ft. Worth	599
Houston	372



1 paw for each
correct answer.

9. Consider the number 812,367. Write a number that is:

A. 10 greater _____

B. 100 less _____



10. The graph below shows the number of points made by 4 players on the basketball team.




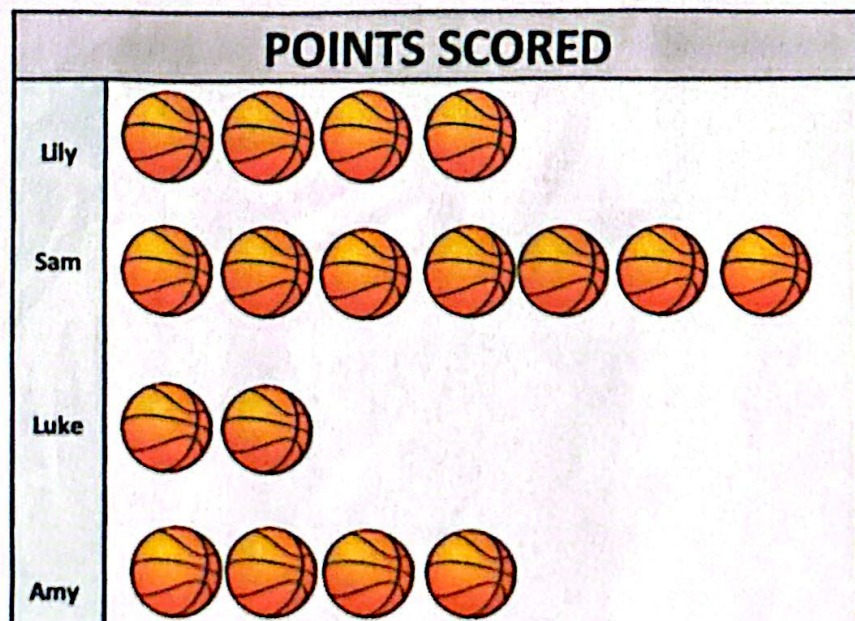
2 paws for each
correct answer

A. How many more points did Lily score than Luke? _____ more points

B. How many more points did Sam score than both Luke and Amy?

_____ points

Each  = 2 points scored.



**4th
Grade**