



Live Laugh Grow Academy Employee Handbook: Employment Policies (1 of 2 Handbooks)

Adopted by LLGA: 03/04/2021
Amended by Tiffany Johnson 01/26/2023

Live Laugh Grow Academy LLC

The mission of Live Laugh Grow Academy, is to provide high quality, developmentally appropriate child care in a nurturing, safe, and supportive environment.

Live Laugh Grow Academy Employee Handbook 1: Employment Policies

Table of Contents

HANDBOOK INTRODUCTION	5
1.1 GENERAL ROLES AND RESPONSIBILITIES	6
THE EMPLOYMENT RELATIONSHIP	6
HIRING	6
3.1 COMMITMENT TO EQUAL OPPORTUNITY	6
3.2 RECRUITMENT	6
3.3 EMPLOYMENT OF RELATIVES	6
NEW EMPLOYEE INFORMATION.....	7
4.1 NEW EMPLOYEE ORIENTATION	7
4.2 AUTHORIZATION OF BACKGROUND CHECK	6
4.3 PROOF OF WORK ELIGIBILITY	6
4.4 CHILD SUPPORT REPORTING REQUIREMENTS.....	7
EMPLOYMENT & EMPLOYEE CLASSIFICATIONS	7
5.1 INDEPENDENT CONTRACTOR (CLASSIFICATION)	7
5.2 TEMPORARY EMPLOYEES	7
5.3 CONTRACT EMPLOYEES	8
5.4 PART-TIME AND FULL-TIME EMPLOYEES	8
5.5 EXEMPT AND NONEXEMPT EMPLOYEES	8
HOURS	8
6.1 HOURS OF WORK.....	8
6.2 FLEXIBLE SCHEDULING.....	8
6.3 TELECOMMUTING POLICY.....	9
6.4 MEAL AND REST BREAKS	9
6.5 OVERTIME	9
PAY POLICIES.....	10
7.1 PAYDAY.....	10
7.2 ADVANCE POLICY	10
7.3 PAYROLL DEDUCTIONS	10
7.4 WAGE GARNISHMENTS	10
7.5 EXPENSE REIMBURSEMENT	10
EMPLOYEE BENEFITS	11
8.1 EMPLOYEE BENEFIT PLANS.....	12
8.2 TAX DEFERRED RETIREMENT ACCOUNT	12
8.3 CHILDCARE BENEFITS	12
8.4 STATE DISABILITY INSURANCE	12
8.5 WORKERS' COMPENSATION INSURANCE.....	12
8.6 UNEMPLOYMENT INSURANCE	12
USE OF [NAME OF CHILDCARE] PROPERTY	12
9.1 [NAME OF CHILDCARE] PROPERTY	12
9.2 TELEPHONE SYSTEM	12
9.3 RETURN OF [NAME OF CHILDCARE] PROPERTY	13
LEAVE AND TIME OFF	13
10.1 VACATION	13
10.2 HOLIDAYS.....	13

10.3	SICK LEAVE	14
10.4	BEREAVEMENT LEAVE	14
10.5	FAMILY AND MEDICAL LEAVE	14
10.6	MILITARY LEAVE	15
10.7	LEAVE OF ABSENCE.....	15
10.8	VOTING.....	15
10.9	JURY DUTY.....	15
PERFORMANCE	16
11.1	YOUR JOB PERFORMANCE.....	16
11.2	PERFORMANCE REVIEWS	16
WORKPLACE BEHAVIOR	16
12.1	ACT PROFESSIONALLY	16
12.2	PUNCTUALITY AND ATTENDANCE.....	16
12.3	EMPLOYEE APPEARANCE AND DRESS.....	17
12.4	PRANKS AND PRACTICAL JOKES	17
12.5	THREATENING, ABUSIVE, OR VULGAR LANGUAGE.....	17
12.6	FIGHTING	17
12.7	INSUBORDINATION	17
12.8	PROGRESSIVE DISCIPLINE.....	18
HEALTH AND SAFETY	19
13.1	SAFETY POLICY	19
13.2	REASONABLE ACCOMMODATION POLICY & PROCEDURE.....	19
13.3	WORKPLACE SECURITY	19
13.4	WHAT TO DO IN AN EMERGENCY	20
13.5	SMOKING IS PROHIBITED	20
13.6	VIOLENCE IS PROHIBITED	20
EMPLOYEE PRIVACY	21
14.1	SEARCH POLICY.....	21
14.2	TELEPHONE MONITORING	21
COMPUTERS, EMAIL, AND THE INTERNET	21
15.1	INTERNET USE	21
15.2	SOFTWARE USE	22
EMPLOYEE RECORDS	23
16.1	YOUR PERSONNEL FILE	23
16.2	CONFIDENTIALITY OF PERSONNEL FILES	23
16.3	PLEASE NOTIFY US IF YOUR INFORMATION CHANGES.....	23
DRUGS AND ALCOHOL	24
17.1	POLICY AGAINST ALCOHOL AND ILLEGAL DRUG USE.....	ERROR! BOOKMARK NOT DEFINED.
17.2	INSPECTIONS TO ENFORCE DRUG AND ALCOHOL POLICY	26
TRADE SECRETS AND CONFLICTS OF INTEREST	23
18.1	CONFIDENTIALITY AND TRADE SECRETS.....	26
18.2	CONFLICTS OF INTEREST	26
18.3	OUTSIDE EMPLOYMENT, CONSULTING, & HONORARIA POLICY	26
DISCRIMINATION AND HARASSMENT	27
19.1	OUR COMMITMENT TO EQUAL EMPLOYMENT OPPORTUNITY	27
19.2	HARASSMENT WILL NOT BE TOLERATED	27
COMPLAINT POLICIES	27
ENDING EMPLOYMENT	28
21.1	TERMINATION/RESIGNATION POLICY	28
21.2	FINAL PAYCHECKS	28
21.3	REFERENCES.....	29

SECTION 1 HANDBOOK INTRODUCTION

Welcome to Live Laugh Grow Academy! Each employee at Live Laugh Grow Academy is valued—we hope that you find your work here rewarding and satisfying.

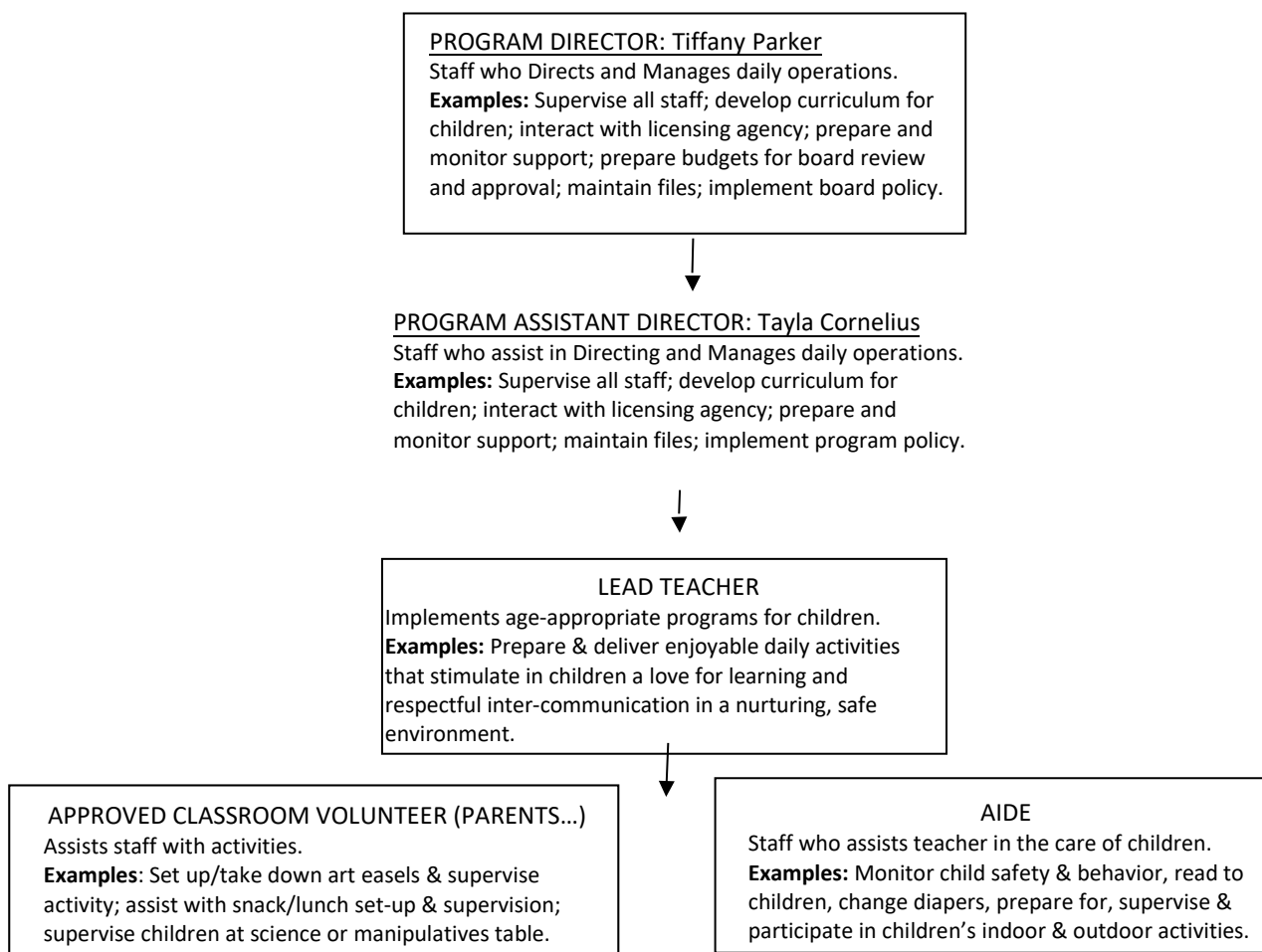
This Handbook, and its companion employee handbook *Child Care Policies and Procedures* will familiarize you with the privileges, benefits, and responsibilities of being an employee at Live Laugh Grow Academy. For detailed information, your director can help direct you to sources of more detailed information

At Live Laugh Grow Academy, as in the rest of the world, circumstances frequently change. As a result, we may have to revise, rescind, or supplement these policies from time to time. The policies described in this Handbook do not constitute a contract or a promise. The policies can change at any time, for any reason, without warning.

We are always looking for ways to improve communications with our employees. If you have suggestions for ways to improve this Handbook in particular or employee relations in general, please feel free to bring them to your supervisor.

Roles and Responsibilities

All teachers, aides and other Live Laugh Grow Academy staff report to the Program Director. To help employees understand other, general roles and responsibilities, please see the following chart:



SECTION 2

THE EMPLOYMENT RELATIONSHIP

Your employment at Live Laugh Grow Academy is at will. This means that you are free to quit at any time, for any reason, just as we are free to terminate your employment at any time, for any reason – with or without notice, with or without cause.

No employee or Live Laugh Grow Academy representative, has the authority to change the at-will employment relationship or to contract for different terms of employment. The Program Director has the authority to manage the day to day matters included in this manual.

Nothing in this Handbook constitutes a contract or promise of continued employment.

SECTION 3

HIRING

3.1 Commitment to Equal Opportunity

At Live Laugh Grow Academy all people are entitled to equal employment opportunity. We extend equal opportunity to all individuals without regard to race, religion, ancestry, color, sex, national origin, veteran status, age, disability, sexual orientation, marital status, or any other characteristic protected by law. Live Laugh Grow Academy follows state and federal laws prohibiting discrimination in hiring and employment.

3.2 Recruitment

Live Laugh Grow Academy conducts all recruiting in a fair and nondiscriminatory manner. In addition to looking outside Live Laugh Grow Academy for new hires, we also look within. If you see a posting for a job that interests you, we encourage you to apply for it by following the application procedures described in the job posting.

3.3 Employment of Relatives

Usually, Live Laugh Grow Academy will not refuse to hire someone simply because he or she is related to one of our current employees. If you have a relative who might be perfect to fill an open position at Live Laugh Grow Academy, please don't hesitate to refer this person to us. There are times, however, when employing relatives is inappropriate and has the potential to affect the morale of other employees and to create conflicts of interest for the relatives involved. Therefore, we will not hire relatives of current employees where one relative will have to supervise the other.

If two employees become related while working for Live Laugh Grow Academy, and if one of them is in a position of supervision over the other, only one of the employees will be allowed to keep his or her current position. The other will either must transfer to another position or leave Live Laugh Grow Academy. An exception to this policy may only be made by action of the Program Director and a written declaration for the exception signed by the Program Director.

Under this policy, the term "relatives" encompasses husbands, wives, live-in partners, parents, children, siblings, in-laws, cousins, aunts, and uncles. This policy covers biological relationships, marriage relationships, and step relationships.

SECTION 4

NEW EMPLOYEE INFORMATION

4.1 New Employee Orientation

Within a day or two of starting work, your supervisor will arrange a new employee orientation meeting. During this meeting, you will receive important information about Live Laugh Grow Academy's policies and procedures. You will also be asked to complete paperwork and forms relating to your employment, such as tax withholding forms, emergency contact forms, and benefits paperwork.

Please feel free to ask any questions you might have about Live Laugh Grow Academy during the orientation meeting. If additional questions come up after the meeting, refer to this manual or you can talk with your supervisor.

4.2 Authorization of Background Check

Prior to employment we require that a final candidate complete SP 206, VA Authorization for Background Check, SP 345, Criminal History Background Check and Criminal History Disclosure/ Sworn Statement. According to VA State law, all employment offers are contingent on a background check that is clean and consistent with declarations on the employment application.

4.3 Proof of Work Eligibility

As required by the federal government, a prerequisite for employment is to complete Federal Form I-9 and provide documentation proving your identity and your eligibility to work in the United States.

4.4 Child Support Reporting Requirements

Federal and state laws require us to report basic information about new employees, including your name, address, and Social Security number, to the Virginia Department of Human Services Child Support Division. The state collects this information for a variety of reasons, including the enforcement of child support orders. If the state determines that you owe child support and sends us an order requiring us to withhold money from your paycheck to pay your child support obligations Live Laugh Grow Academy will comply with the order.

SECTION 5

EMPLOYMENT & EMPLOYEE CLASSIFICATIONS

5.1 Independent Contractor (Classification)

Persons functioning as independent contractors must first be approved by the Director. Per the Internal Revenue Service, "independent contractors" are generally defined as self-employed individuals who provide services to a customer, but who are not directly controlled by the customer (further criteria are also specified). VA State law requires an independent contractor to provide Live Laugh Grow Academy with their state identification number prior to hiring.

Independent contractors are not Live Laugh Grow Academy employees. In all cases, supervisors with hiring authority should discuss the position they are planning to staff with the Director to determine if the position is appropriately classified as an 'employee' or 'independent contractor'.

5.2 Temporary Employees

Periodically, it becomes necessary for us to hire individuals to perform a job or to work on a project that has a limited duration. Typically, this happens in the event of a special project, special time of year, abnormal workload, or emergency.

Individuals whom we hire for such work are temporary employees. They are not eligible to participate in any of Live Laugh Grow Academy's benefit programs, nor can they earn or accrue any leave, such as vacation leave. Of course, we will provide to temporary employees any and all benefits mandated by law.

Virginia State law requires that all temporary employees complete a background check just as permanent employees are required to do.

Temporary employees cannot change from temporary status to any other employment status by such informal means as remaining in our employ for an extended period of time or through oral promises made to them by coworkers, members of management, or supervisors. The only way a temporary employee's status can change is through a written notification signed by the Director.

Like all employees who work for Live Laugh Grow Academy, temporary employees work on an at-will basis. This means that both the employee and Live Laugh Grow Academy is free to terminate their employment at any time for any reason that is not illegal – even if they have not completed the temporary project for which they have been hired.

5.3 Contract Employees

Live Laugh Grow Academy may hire some executive employees on a contract basis. The contract usually specifies a particular duration of employment as well as other conditions that are negotiated between employee and Live Laugh Grow Academy. Where applicable, agreements made in contracts supersede the policies outlined in this manual. The policies presented in this manual are usually broader than those covered in an employee contract; when a topic is not covered in the contract, the general employee policies and procedures apply.

5.4 Part-Time and Full-Time Employees

Depending on the number of hours per week you are regularly scheduled to work, you are either a part-time or a full-time employee. It is necessary that you understand which of these classifications you fit into, because it will be important in determining whether you are entitled to benefits and leave.

Part-time employees: Employees who are regularly scheduled to work fewer than 30 hours per week are part-time employees.

Full-time employees: Employees who are regularly scheduled to work 40 hours per week are full-time employees.

5.5 Exempt and Nonexempt Employees

Your entitlement to earn overtime pay depends on whether you are classified as an exempt or a nonexempt employee.

Exempt employees are those who do not earn overtime because they are exempt from the overtime provisions of the federal Fair Labor Standards Act and applicable state laws.

Nonexempt employees are those who meet the criteria for being covered by the overtime provisions of the federal Fair Labor Standards Act and applicable state laws.

Details of the exempt and nonexempt employee categories are found in Section 6.5 of this handbook. If you are uncertain about which category you fall into, speak to your supervisor.

SECTION 6 HOURS

6.1 Hours of Work

Live Laugh Grow Academy's regular hours of business are from 6:00 am to 12:00am, Monday through Friday. Hours may change as programs are added or changed. Live Laugh Grow Academy holds special fundraising events, and trainings that may be out of town, and encompass evening or weekend hours. Employees are expected to work at such functions if requested to do so.

We understand that many employees must balance the demands of their job with the needs of their families and other outside commitments. Therefore, we will do our best to work with employees to temporarily change their schedule.

If you would like to change your work schedule – for example, to come in and leave a couple of hours earlier or to work more hours on some days and fewer on others – please talk to the director. Live Laugh Grow Academy will try to accommodate your request, to the extent practical. Because not all jobs are suitable to flexible scheduling, and because we must ensure that our staffing needs are met and consistent with licensing requirements, we cannot guarantee that Live Laugh Grow Academy will grant your request.

6.3 Telecommuting Policy

All employees are expected to report to the Live Laugh Grow Academy daily. Telecommuting is not a part of the offerings of employment.

6.4 Meal and Rest Breaks

Non-exempt employees may take a paid 10-minute break every four hours. In addition, all employees who work at least 5 hours in a day are entitled to take a 30-minute meal break, as long as there are enough employees on duty at the time to remain in compliance with the childcare license. Meal breaks are unpaid and not counted in hours worked.

6.5 Overtime

Employees are expected to work overtime when needed. We will try to give employees advance notice when overtime work is necessary; however, it will not always be possible to notify workers in advance.

A. Exempt employees

Exempt employees are professionals with fluctuating work and workload schedules and will not be paid for working beyond their regular scheduled hours.

Because it conflicts with the definition of “exempt,” in no case will the accumulation of more than 40 hours (“comp time”) be taken, hour for hour, for future time off. Rather, exempt employees are permitted flexibility to take some time off within the one month of pay periods following a heavy workload. Such time off is not guaranteed, and must be scheduled and approved by the exempt staff’s supervisor.

B. Nonexempt employees

Nonexempt employees are entitled to payment for overtime, according to the rules set forth below.

- All overtime work must be approved in writing, in advance, by the employee’s supervisor. Working overtime without permission violates Live Laugh Grow Academy policy and may result in disciplinary action.
- For purposes of calculating how many hours an employee has worked in a day or week, our workweek begins at 12:01 a.m. on Sunday and ends at midnight on Saturday. Our workday begins at 12:01 a.m. and ends at midnight each day.
- Nonexempt employees will be paid 1 ½ times their regular hourly rate of pay for every hour worked in excess of 40 hours in one week.
- Only time actually spent working counts as hours worked. Vacation time, sick days, holidays, or any other paid time during which an employee did not actually work will not count as hours worked.
- Overtime will not be granted for attendance at trainings or conferences and the travel time associated with them.

- Live Laugh Grow Academy follows applicable State and Federal laws related to overtime. This section does not cover all of the details of the requirements of overtime law. If you have any questions about overtime, your supervisor will discuss with you the specific policies applicable to your situation.

SECTION 7 PAY POLICIES

7.1 Payday

Employees are paid twice a month on the 5th and 20th. Employees should check in and out on the computer in order to record time worked. If there is an error in the recording of time, please ask the supervisor or director to fix the mistakes. Time sheets will be given out on the Monday before payday for each employee to review, sign and return to the director.

7.2 Advance Policy

Live Laugh Grow Academy does not allow employees to receive pay advances.

7.3 Payroll Deductions

Your paycheck reflects your total earnings for the pay period, as well as any mandatory or voluntary deductions from your paycheck. Mandatory deductions are deductions that Live Laugh Grow Academy is legally required to take. Such deductions include federal income tax, Social Security tax (FICA), and any applicable state taxes. Voluntary deductions are deductions that you have authorized.

If you have any questions about your deductions, or wish to change your federal withholding form (Form W-4), contact your supervisor.

7.4 Wage Garnishments

A wage garnishment is an order from a court or a government agency directing us to withhold a certain amount of money from an employee's paycheck and send it to a person or agency. Wages can be garnished to pay child support, spousal support or alimony, tax debts, outstanding student loans, or money owed as a result of a judgment in a civil lawsuit.

If we are instructed by a court or agency to garnish an employee's wages, the employee will be notified of the garnishment at once. Please note that we are legally required to comply with these orders. If you dispute or have concerns about the amount of a garnishment, you must contact the court or agency that issued the order.

7.5 Expense Reimbursement

From time to time, employees may incur expenses on behalf of the Live Laugh Grow Academy. Live Laugh Grow Academy will reimburse you for the actual work-related expenses you incur, as long as those expenses are reasonable and were pre-approved by your supervisor. You must follow these procedures to get reimbursed:

- Get permission from your supervisor before incurring an expense.
- Spend Live Laugh Grow Academy's money wisely – make an effort to save money and use approved vendors if possible.
- Keep a receipt or some other proof of payment for every expense.
- Use the Live Laugh Grow Academy expense form to record your expenses; submit the completed form, along with receipts to your supervisor for approval within two weeks of incurring an expense.

If your report is approved, you will receive your reimbursement as soon as possible.

A. Procedures for Travel Expenses

If employees are required to travel for work, Live Laugh Grow Academy will reimburse you for your travel expenses. In every case employees need to be careful to comparative shop and use discounted services whenever possible.

You **must** request advance approval for travel and expected expenses from your supervisor before making expenditures and follow procedures to qualify for expense reimbursement.

Reimbursable expenses include:

- Cost of travel to and from the airport or train station, including parking expenses and tolls;
- Cost of airline, train or other transit tickets – it is important to shop expenses to ensure that tickets are as economical as possible;
- Car rental for the lowest priced vehicle (unless a larger vehicle is needed and pre-approved by your supervisor) and fuel cost;
- Personal car mileage is reimbursed at the current IRS rate for business mileage reimbursement;
- Cost of lodging – employees should select moderately priced lodging and share a room when possible;
- Reimbursement for meals and other incidental expenses, up to a maximum of \$12 for breakfast or lunch and \$30 for dinner with a daily maximum not to exceed 40 (unless approved by a supervisor);
- Cost of alcohol is not reimbursable unless approved by your supervisor.

B. Meal Reimbursement is applicable for actual meal expenses incurred while traveling away from home overnight on Live Laugh Grow Academy business, or for a meal that an employee purchases when attending a meal meeting for the convenience of Live Laugh Grow Academy, and the main purpose of the meeting is the active conduct of business. One meal is also eligible for reimbursement when the employee is traveling or on Live Laugh Grow Academy business that takes him/her away from the office for more than 6 consecutive hours beyond a typical meal time. In every instance cost limits and receipt policies apply.

C. Mileage Reimbursement

When a personal car is used for Live Laugh Grow Academy travel the mileage rate used is the current IRS rate for business mileage reimbursement. Employees are not entitled to separate reimbursement for gas, maintenance, insurance, or other vehicle-related expenses – the mileage reimbursement is intended to encompass all of these expenses. Employees using a personal vehicle for work-related purposes must have a valid driver's license and adequate insurance coverage.

Live Laugh Grow Academy does not reimburse employees for their commute to and from the workplace.

To claim mileage reimbursement, you must follow these procedures:

- Use the Live Laugh Grow Academy reimbursement form, which asks you to record the date, purpose for the trip, your start location and all destinations along with the related miles traveled.
- Submit your record to your supervisor for approval within two weeks or on a regular monthly travel reimbursement form. Late reimbursements may be denied if they are submitted after the close of the funding source deadline.

If your record is approved, you will receive your reimbursement payment as soon as possible

SECTION 8 EMPLOYEE BENEFITS

8.1 Employee Health Benefit Plans

Live Laugh Grow Academy does offer insurance benefits at this time, please see Mrs. Tiffany for more information.

8.2 Tax Deferred Retirement Account

Live Laugh Grow Academy does not offer retirement options at this time.

8.3 Childcare Benefits

Live Laugh Grow Academy does offer a 50% off child care discount at this time. Employees are not guaranteed a child care space in the program and are subject to the same wait list policies as others who are on the waiting list for child care spots.

8.4 State Disability Insurance

A few states have laws that require employers to provide disability insurance, but Virginia is not among them. Virginia employers may provide such insurance, but they are not required to do so. State law, however, may require specific provisions in a group disability policy sold by insurers in Virginia.

8.5 Workers' Compensation Insurance

If you suffer from an illness or injury that is related to your work, you may be eligible for workers' compensation benefits. Workers' compensation will pay for medical care and lost wages resulting from job-related illnesses or injuries. For more information please contact your site Director.

If you are injured or become ill through work, please inform your supervisor immediately regardless of how minor the injury or illness might be.

8.6 Unemployment Insurance

If your employment with Live Laugh Grow Academy ends, you may be eligible for unemployment benefits. These benefits provide you with a percentage of your wages while you are unemployed and looking for work. For more information please contact Job Service of Virginia.

SECTION 9 USE OF Live Laugh Grow Academy PROPERTY

9.1 Live Laugh Grow Academy Property

Live Laugh Grow Academy has invested valuable funds into the property and equipment that you use to perform your job. We ask all employees to take care of this property and to report any problems to their supervisor. If a piece of equipment or property is unsafe for use, please report it immediately. shortages and equipment loss caused by the employee's gross negligence or a deliberate, dishonest act.

Please use property only in the manner intended and as instructed. Failure to use Live Laugh Grow Academy property appropriately, and failure to report problems or unsafe conditions, may result in disciplinary action, up to and including termination.

We do not allow personal use of Live Laugh Grow Academy property. Live Laugh Grow Academy does have a laptop computer that can be checked out for use on company business. You must obtain permission from your supervisor before taking any Live Laugh Grow Academy equipment, such as the laptop computer, from the office.

9.2 Telephone System

The Live Laugh Grow Academy

Live Laugh Grow Academy telephone system is intended to be used for business use only. Employees are expected to keep personal calls to a minimum. If you must make or receive a personal call, please keep your conversation brief. Extensive personal use of Live Laugh Grow Academy's phones is grounds for discipline.

9.3 Return of Live Laugh Grow Academy Property

When your employment with Live Laugh Grow Academy ends, we expect you to return Live Laugh Grow Academy property – and to return it clean and in good repair. This includes this Employee Handbook, all manuals and guides, documents, phones, computers, equipment, keys, and tools.

We reserve the right to take any lawful action to recover or protect Live Laugh Grow Academy property.

SECTION 10 LEAVE AND TIME OFF

10.1 Vacation

Regular full-time employees are eligible to participate in the paid vacation program. Employees will receive 40 hours vacation time after the first year anniversary. Vacation time is a privileged and if dismissed negatively employee will lose all vacation time. 1 week (40 hours) can roll over into the following year if unused.

Employees must schedule their vacations 2 weeks in advance, with their supervisor. We will try to grant every employee's vacation request for the days off of their choice. However, we must have enough workers to meet our day-to-day needs – which means we might not be able to grant every vacation request, especially during holiday periods.

Employees may request (2 weeks in advance) unpaid time off in addition to paid vacation time. Such requests will be considered on a case-by-case basis and will be granted if circumstances permit. Employees will be paid for eligible accrued and unused vacation when their employment terminates.

10.2 Holidays Live Laugh Grow Academy observes the following holidays each year:

- New Year's Day
- Memorial Day
- Independence Day
- Labor Day
- Thanksgiving Day (Wednesday, Thursday & Friday)
- Christmas *(These holidays may be exchanged for other religious or alternative holiday if eligible employees desire it—please notify your supervisor of the desired exchange.)*
 - Other days as pre-approved by the Live Laugh Grow Academy Director

If a holiday falls on a weekend, Live Laugh Grow Academy will inform you when the holiday will be observed. Ordinarily, holidays falling on a Saturday will be observed the preceding Friday; holidays falling on a Sunday will be observed the following Monday.

10.3 Sick Leave

Live Laugh Grow Academy provides paid sick days to employees. Employees may use sick leave when they are unable to work due to illness or injury. Sick leave may also be used for the employees own, or for an immediate family member's illness or preventive care. Employees who are a victim of domestic abuse, stalking, or sexual assault are permitted to use sick leave for time off related to the victimization. Sick leave is not to be used as extra vacation time, personal days, or "mental health" days. Any employee who abuses sick leave may be subject to discipline.

Paid sick leave is given after the 1st year anniversary of 40 hours. 20 hours of Sick time can be rolled over into the next year.

You must report to your supervisor if you will need to take sick leave. We ask that employees telephone in as soon as they realize that they will be unable to work, 2 hours before the regular start of their work day. You must report to your supervisor by phone each day you are out on leave. You may be asked to provide a doctor's note.

10.4 Bereavement Leave

Live Laugh Grow Academy does not have any designated paid time for bereavement leave however, if an employee wishes to take time off due to the death of an immediate family member, the employee should notify his or her manager immediately.

Live Laugh Grow Academy defines "immediate family" as the employee's spouse, parent, child, sibling, step parent, step child; the employee's spouse's parent, child, or sibling; the employee's child's spouse; grandparents or grandchildren.

10.5 Family and Medical Leave

Because of our small size, Live Laugh Grow Academy is not required to comply with the federal Family and Medical Leave Act (FMLA). However, we recognize that our employees may occasionally need to take unpaid leave to care for a new child, to care for a seriously ill family member, or to handle an employee's own medical issues. Employees who have accrued sick leave may use this leave to care for their newborn or to care for a seriously ill spouse, domestic partner, or a child of their immediate family.

If you anticipate that you might need time off to deal with family and medical issues, please talk to your supervisor. We can't guarantee that we'll grant every request, but we will seriously consider every request on a case-by-case basis. Among other things, we may consider our staffing needs, your position with Live Laugh Grow Academy the reason why you need leave, and how long you expect your leave to last.

10.6 Military Leave

In accordance with state and federal law, employees who must be absent from work for military service are entitled to take a military leave of absence. This leave will be unpaid. When an employee's military leave ends, Live Laugh Grow Academy will comply with all federal and state laws regarding reinstatement, provided that the employee meets the requirements of federal and state law.

Employees who are called to military service must tell their supervisors as soon as possible that they will need to take military leave. An employee whose military service has ended must return to work or inform Live Laugh Grow Academy that he or she wants to be reinstated in accordance with these guidelines:

- For a leave of 30 or fewer days, the employee must report back to work on the first regularly scheduled workday after completing military service, allowing for travel time.
- For a leave of 31 to 180 days, the employee must request reinstatement within 14 days after military service ends.
- For a leave of 181 days or more, the employee must request reinstatement within 90 days after military service ends.

During this unpaid leave, employees are entitled to use applicable paid time off (vacation time).

10.7 Leave of Absence

Leave of absence without pay will be considered only when an employee has used all accrued vacation and/or sick leave. A leave of absence will require the approval of the Program Director. The employee will be billed for continuing benefits during the requested leave of absence for any time over the first 30 days.

10.8 Vote

Live Laugh Grow Academy encourages employees to exercise their right to vote. If your work schedule and the location of your polling place will make it difficult for you to get to the polls before they close, you are entitled to take up to one hour off work, at the beginning or end of your shift, to cast your ballot. This time will be unpaid.

Employees who will need to take time off work to vote must inform their supervisors at least two days in advance. Employees are expected to work with their supervisors to ensure that their absence doesn't negatively impact Live Laugh Grow Academy operations.

10.9 Jury Duty

If you are called for jury duty, you are entitled to take time off, as necessary, to fulfill your jury obligations. We will work with employees to flex their work schedule if additional time off is needed. Employees are expected to assist with work-related questions and to try to perform some tasks, as time permits, while they are on Live Laugh Grow Academy jury leave. Time spent on these Live Laugh Grow Academy tasks is paid. No employee will face discipline or retaliation for jury service. Unfortunately, Live Laugh Grow Academy is unable to pay for jury duty time off, but vacation time may be used.

You must immediately inform your supervisor when you receive your jury duty summons. Employees must submit documentation of jury service that verifies the days of service. If you are chosen to sit on a jury, you must inform your supervisor how long the trial is expected to last. You must also check in with your supervisor periodically during your jury service, so Live Laugh Grow Academy knows when to expect you back at work.

SECTION 11 PERFORMANCE

11.1 Your Job Performance

Poor job performance can lead to discipline, up to and including termination. Here at Live Laugh Grow we have a point system. Each employee starts with 75 points, they can add or deduct points. If points fall under 35, staff will be under review for termination.

11.2 Performance Reviews

We conduct periodic reviews of individual employee performance. We hope that these reviews will improve the employment relationship by clarifying expectations of employees and what employees expect of us.

We require all employees to participate in the review process. Failure to participate could lead to discipline, up to and including termination.

SECTION 12 WORKPLACE BEHAVIOR

12.1 Act Professionally

People who work together have an impact on each other's performance, productivity, and personal satisfaction in their jobs. In addition, how our employees act toward customers, including children and their parents, and vendors will influence whether those relationships are successful for Live Laugh Grow Academy. Because your conduct affects many more people than just yourself, we expect you to act in a professional manner whenever you are on Live Laugh Grow Academy property, conducting Live Laugh Grow Academy business, or representing Live Laugh Grow Academy at business or social functions.

Although it is impossible to give an exhaustive list of everything that professional conduct means, it does, at a minimum, include the following:

- following all of the rules in this Handbook, as well as our parent and staff handbook that apply to you;
- following and respecting office operating procedures, which will change from time-to-time, but include such topics as treatment of children, messages for co-workers, computer file-sharing; filing and maintenance of work-related documents; grant writing; participation in staff meetings and similar topics;
- refraining from rude, offensive, or outrageous behavior;
- refraining from ridicule and hostile jokes;
- treating children, coworkers, parents, customers (including vendors) with patience, respect, and consideration
- being courteous and helpful to others, and;
- communicating honestly and openly with supervisors, managers, and coworkers.

Individuals who act unprofessionally will face discipline, up to and including termination.

12.2 Punctuality and Attendance

We expect you to maintain regular attendance and to be on time and ready to work at the beginning of each scheduled workday.

Of course, things may happen that prevent you from showing up to work on time. For example, you may be delayed by weather, a sick child, or car trouble. If, in these infrequent occurrences, you are going to be late, please telephone your supervisor. In addition to a phone call, a text message may also be sent. Please give this notice as far in advance as possible.

If you are late for work or fail to appear without calling in as required by this policy or by other policies in this Handbook, you will face disciplinary action, up to and including termination.

12.3 Employee Appearance and Dress

We ask all employees to use common sense when they dress for work. Please dress appropriately for your position and job duties, and please make sure you are neat and clean at all times. Live Laugh Grow Academy will provide 1 work shirts for each employee, and scrubs are the required dress code for all employees. No yoga pants, leggings, leisure pants, athletic wear, or sweatpants are acceptable.

Clothing and shoes must allow you to safely work with children and not be hindered by dress that restricts your ability to bend, kneel, sit on the floor, and actively interact with children. Do not wear high-heeled shoes or open-toed shoes. Be mindful of jewelry, remember that children grab at jewelry which can be painful to you, and could pose a problem to children should they ingest small objects.

Because young children are more sensitive, do not use perfume or strongly scented lotions.

If you have any questions about the proper attire for your position, please contact your supervisor. We will try to reasonably accommodate an employee's special dress or grooming needs that are the result of religion, ethnicity, race, or disability.

12.4 Pranks and Practical Jokes

Although we want our employees to enjoy their jobs and have fun working together, we cannot allow employees to play practical jokes or pranks on each other. At best, these actions disrupt the workplace and dampen the morale of some; at worst, they lead to complaints of discrimination, harassment, or assault.

Employees who play pranks or practical jokes will face disciplinary action, up to and including termination.

12.5 Threatening, Abusive or Vulgar Language

We expect our employees to treat everyone they meet through their jobs with courtesy and respect. Threatening, abusive, and vulgar language has no place in our workplace. It destroys morale and relationships, and it impedes the effective and efficient operation of our business. As a result, we will not tolerate threatening, abusive, or vulgar language from employees while they are on the worksite, conducting Live Laugh Grow Academy business, or attending Live Laugh Grow Academy -related business or social functions.

Employees who violate this policy will face disciplinary action, up to and including termination.

12.6 Fighting

Verbal or physical fighting among employees is absolutely prohibited. Employees shall not engage in, provoke, or encourage a fight. Those who violate this policy will be disciplined, up to and including termination.

12.7 Insubordination

This workplace operates on a system of mutual respect between supervisors and employees. Supervisors must treat their employees with dignity and understanding, and employees must show due regard for their supervisors' authority. Insubordination occurs when employees unreasonably refuse to obey the orders or follow the instructions of their supervisors. It also occurs when employees, through their actions or words, show disrespect toward their supervisors.

Insubordinate employees will face discipline, up to and including termination.

If a supervisor requests an employee to do something they feel is unsafe or unethical then that employee has the right to discuss their concerns with the supervisor. If, after hearing the employee's side, the supervisor continues to give the same order or rule, the employee must either obey or use the complaint procedures described in Section 20 of this Handbook.

12.8 Progressive Discipline

Any employee conduct that, in the opinion of Live Laugh Grow Academy, interferes with or adversely affects our business is sufficient grounds for disciplinary action. Disciplinary action can range from oral warnings to immediate discharge. Our general policy is to take disciplinary steps in the following order:

1. oral warning(s)
2. written reprimand(s)
3. suspension, and
4. termination.

However, we reserve the right to alter the order described above, to skip disciplinary steps, to eliminate disciplinary steps, or to create new and/or additional disciplinary steps.

In choosing the appropriate disciplinary action, we may consider any number of the following things:

- the seriousness of your conduct
- your history of misconduct
- your employment record
- your length of employment with Live Laugh Grow Academy
- the strength of the evidence against you
- your ability to correct the conduct
- your attitude about the conduct
- actions we have taken for similar conduct by other employees
- how your conduct affects Live Laugh Grow Academy, its customers, and your coworkers, and any other circumstances related to the nature of the misconduct, to your employment with Live Laugh Grow Academy, and to the effect of the misconduct on the business of Live Laugh Grow Academy.

We will give those considerations whatever weight we deem appropriate. Depending on the circumstances, we may give some considerations more weight than other considerations – or no weight at all.

Some conduct may result in immediate termination. Here are some examples:

- improper treatment of a child/ren, including, but not limited to: abuse or withholding knowledge of abuse of a child, leaving child/ren unattended, allowing the child to leave the center with an unauthorized person
- falsifying Live Laugh Grow Academy records
- theft of Live Laugh Grow Academy property
- brandishing a weapon at work
- threatening the physical safety of child/ren, customers, coworkers, managers, or supervisors
- fighting or physically or verbally assaulting anyone at work

- any illegal conduct at work
- using or possessing alcohol or illegal drugs at work
- working under the influence of alcohol or illegal drugs
- excessive tardiness or absenteeism
- failing to carry out job assignments
- insubordination
- making false statements on a job application, failure to report conviction of a felony while employed at Live Laugh Grow Academy
- violating Live Laugh Grow Academy rules and regulations, and
- unlawful discrimination and harassment.

Of course, it is impossible to compile an exhaustive list of the types of conduct that will result in immediate termination. The ones listed above are merely illustrations. Please remember that your employment is at the mutual consent of you and Live Laugh Grow Academy. This policy does not change this fact. This means that you or [Live Laugh Grow Academy can terminate our employment relationship at will, at any time, with or without cause, and with or without advance notice.

As a result, Live Laugh Grow Academy reserves its right to terminate your employment at any time, for any lawful reason, including reasons not listed above. You also have the right to end your employment at any time.

SECTION 13 HEALTH AND SAFETY

13.1 Safety Policy

Live Laugh Grow Academy takes employee safety very seriously. In order to provide a safe workplace for everyone, every employee must follow our safety rules:

- Horseplay, rough-housing, and other physical acts that may endanger employees or cause accidents are prohibited.
- Employees must follow their supervisors' safety instructions.
- All equipment and machinery must be used properly. This means all guards, restraints, and other safety devices must be used at all times. Do not use equipment for other than its intended purpose.
- All employees must immediately report any workplace condition that they believe to be unsafe to their supervisor. Live Laugh Grow Academy will look into the matter promptly.
- All employees must immediately report any workplace accident or injury to their supervisor.

13.2 Reasonable Accommodation Policy & Procedure

Live Laugh Grow Academy complies with all applicable legal mandates of the Federal Americans with Disabilities Act of 1990 (ADA Act). Live Laugh Grow Academy is committed to providing reasonable accommodations to qualified employees with disabilities who need accommodations to perform their essential job functions.

A. Requesting an Accommodation

An employee/applicant who is requesting a reasonable accommodation must present their needs and supporting medical documentation in writing to the Program Director. Determination of reasonable accommodation will include an interactive process with the employee/applicant with consideration of request, associated costs, and Live Laugh Grow Academy legal obligations.

13.3 Workplace Security

It is every employee's responsibility to help keep our workplace secure from unauthorized intruders. Every employee must comply with these security precautions. After-hours access to the workplace is

prohibited. If you have work that needs to be done after closing time, please clear this with a supervisor.

Employees can have an occasional visitor in the workplace, but workplace visits should be the exception rather than the rule. If you are anticipating a visitor, it is important that the visitors not violate licensing regulations. It is important that you gain permission from your supervisor in advance of any workplace visitor.

If you are the last to leave the workplace for the evening, you are responsible for setting the alarm and ensuring the doors are locked and the shades are closed. If you have questions about any of these responsibilities, please talk to your supervisor.

COVID-19 EXCEPTION: As of right now we are limiting any visitors that do not work at Live Laugh Grow Academy from coming into the facility.

13.4 What to Do in an Emergency

In case of an emergency, such as a fire, tornado, or accident, your first priority should be to the safety of children and to your own safety. In the event of an emergency causing serious injuries, *IMMEDIATELY DIAL 9-1-1* to alert police and rescue workers of the situation.

If you hear a fire alarm or in case of an emergency that requires evacuation, please help children, and you, to proceed quickly and calmly to the fire exits. Live Laugh Grow Academy will hold monthly fire drills to familiarize everyone with the routes they should take. Remember that every second may count – don't return to the workplace to retrieve a child's or your own personal belongings or work-related items.

First aid kits are located in each classroom. A larger, more comprehensive kit is located at the Nurses Station.

13.5 Smoking Is Prohibited

For the health, comfort, and safety of our employees, and for children, smoking is not allowed on Live Laugh Grow Academy property, or anywhere on the campus grounds. We ask that staff does not smoke during their work breaks. Because everyone involved in the child care center is a potential role model for children, and smoking is a known health risk, employees must take special care to not smoke around children or in a way that is visible to Live Laugh Grow Academy children.

13.6 Violence Is Prohibited

We will not tolerate violence in the workplace. Violence includes physical altercations, coercion, pushing or shoving, horseplay, intimidation, stalking, and threats of violence. Any comments about violence will be taken seriously – and can result in your termination. Please do not joke or make offhand remarks about violence.

A. No Weapons

No weapons are allowed in our workplace. Weapons include firearms, knives, brass knuckles, martial arts equipment, clubs or bats, and explosives. If your work requires you to use an item that might qualify as a weapon, you must receive authorization from your supervisor to bring that item to work or use it in the workplace. Any employee found with an unauthorized weapon in the workplace will be subject to discipline, up to and including termination.

B. What to Do in Case of Violence

If you observe an incident or threat of violence that is immediate and serious, *IMMEDIATELY DIAL 9-1-1* and report it to the police.

If the incident or threat does not appear to require immediate police intervention, please contact your supervisor and report it as soon as possible. The incident will be investigated and appropriate action will be taken. You will not face retaliation for making a complaint about such an incident.

SECTION 14 EMPLOYEE PRIVACY

14.1 Search Policy

Employees do not have a right to privacy in their workspaces or in any other property belonging to Live Laugh Grow Academy. Live Laugh Grow Academy reserves the right to search Live Laugh Grow Academy property at any time, without warning, to ensure compliance with our policies on employee safety, workplace violence, harassment, theft, drug and alcohol use, and possession of prohibited items. Live Laugh Grow Academy property includes, but is not limited to, desks, computers, file cabinets, storage areas, and workspaces. If you use a lock on any item of Live Laugh Grow Academy property (a locker or file cabinet, for example), you must give a copy of the key or combination to your supervisor.

14.2 Telephone and Cell Phone Use

It is important to limit distractions away from the care of child/ren and telephone use must be consistently balanced with this priority.

A. Telephone Monitoring

Live Laugh Grow Academy reserves the right to monitor calls made from or received on Live Laugh Grow Academy telephones. Therefore, no employee should expect that conversations made on Live Laugh Grow Academy telephones will be private.

B. Use of Live Laugh Grow Academy or Personal cell phones

Cell phone use of any kind must be limited to circumstances related to safety or urgent issues. Personal use will be restricted to breaks only. Personal cell phones must be kept in a cabinet or drawer, and may not be visible to children or parents.

SECTION 15 COMPUTERS, EMAIL, AND THE INTERNET

Except under unusual circumstances staff who are supposed to be attending to children, should refrain from use of email, and should only be using the internet if it is related to child attending.

15.1 Internet Use

We may provide you with computer equipment and capabilities, including Internet access, to help you perform your job. This policy governs your use of that equipment to access the Internet.

A. Personal Use of the Internet

Our network and Internet access are for official Live Laugh Grow Academy business only. While it is anticipated that employees may occasionally use the internet for personal reasons, we ask that you keep such use to a minimum. Any employee who goes beyond occasional, short term use of Live Laugh Grow Academy's Internet access for personal reasons, or who violates any other provision of this policy, can be subject to discipline.

B. Prohibited Uses of the Internet

Employees may not, at any time, access the Internet using Live Laugh Grow Academy equipment or links for any of the following purposes:

- To visit websites that feature pornography, gambling, or violent images, or are otherwise inappropriate in the workplace.
- To operate an outside business, solicit money for personal purposes, or to otherwise act for personal financial gain – this includes running online auctions.
- To download software, articles, or other printed materials in violation of copyright laws.

- To download any software program without the express consent of your supervisor.
- To read, open, or download any file from the Internet without first screening that file for viruses using Live Laugh Grow Academy's virus detection software.

C. Internet Use is Not Private

We reserve the right to monitor employee use of the Internet at any time, to ensure compliance with this policy. No use of the internet is private—including but not limited to the sites you visit, the amount of time you spend online, and the communications you have.

15.2 Social Media

Live Laugh Grow Academy does not allow the posting of photos of the children in our care to any social media or internet sites without the written consent of the parents. Live Laugh Grow Academy employees are prohibited from posting information about work and/or the children in the care of Live Laugh Grow Academy and may result in disciplinary action.

In the rapidly expanding world of electronic communication, social media can mean many things. Social media includes all means of communicating or posting information or content of any sort on the Internet, including to your own or someone else's web log or blog, journal or diary, personal web site, social networking or affinity web site, web bulletin board or a chat room, whether or not associated or affiliated with Live Laugh Grow Academy, as well as any other form of electronic communication.

The same principles and guidelines found in the Employer policies apply to your activities online. Ultimately, you are solely responsible for what you post online. Before creating online content, consider some of the risks and rewards that are involved. Keep in mind that any of your conduct that adversely affects your job performance, the performance of fellow employees or otherwise adversely affects members, customers, patients/residents, suppliers, people who work on behalf of the Employer or the Employer's legitimate business interests may result in disciplinary action up to and including termination.

Inappropriate postings that may include discriminatory remarks, harassment, and threats of violence or similar inappropriate or unlawful conduct will not be tolerated and may subject you to disciplinary action up to and including termination.

Always be fair to fellow employees and fair and courteous to customers, patients/residents, members, suppliers or people who work on behalf of the Employer. Also, keep in mind that you are more likely to resolve work-related complaints by speaking directly with your co-workers or supervisor than by posting complaints to a social media outlet. Nevertheless, if you decide to post complaints or criticism, avoid using statements, photographs, video or audio that reasonably could be viewed as malicious, obscene, threatening or intimidating, that disparage customers, patients/residents, members, employees or suppliers, or that might constitute harassment or bullying. Examples of such conduct might include offensive posts meant to intentionally harm someone's reputation or posts that could contribute to a hostile work environment on the basis of race, sex, disability, religion or any other status protected by law or company policy.

Make sure you are always honest and accurate when posting information or news, and if you make a mistake, correct it quickly. Be open about any previous posts you have altered. Remember that the Internet archives almost everything; therefore, even deleted postings can be searched. Never post any information or rumors that you know to be false about the Employer, fellow employees, or enrolled families.

Post only appropriate and respectful content

- Maintain the confidentiality of Live Laugh Grow Academy's private or confidential information. Do not post internal reports, policies, procedures or other internal business-related confidential communications.
- Respect financial disclosure laws.
- Do not create a link from your blog, website or other social networking site to Live Laugh Grow Academy's website or Facebook page without identifying yourself as an employee of Live Laugh Grow Academy.
- Express only your personal opinions. Never represent yourself as a spokesperson for the Live Laugh Grow Academy. If Live Laugh Grow Academy is a subject of the content you are creating, be clear and open about the fact that you are an associate and make it clear that your views do not represent those of Live Laugh Grow Academy, fellow employees, enrolled families, or board members. If you do publish a blog or post online related to the work you do, or subjects associated with the Live Laugh Grow Academy, make it clear that you are not speaking on the company's behalf. It is best to include a disclaimer such as "The postings on this site are my own and do not necessarily reflect the views of the Live Laugh Grow Academy."

Refrain from using social media while on work time or on equipment we provide.

Live Laugh Grow Academy prohibits taking negative action against any employee for reporting a possible deviation from this policy or for cooperating in an investigation. Any employee who retaliates against another employee for reporting a possible deviation from this policy or for cooperating in an investigation will be subject to disciplinary action, up to and including termination.

Employees should not speak to the media on behalf of Live Laugh Grow Academy.

15.3 Software Use

It is Live Laugh Grow Academy's policy to use licensed software in accordance with the terms of its license agreement. Violating a license agreement is not only unethical – it is also illegal and can subject Live Laugh Grow Academy to criminal prosecution and substantial monetary penalties. To help us adhere to this policy, employees may not do any of the following without permission from their supervisor:

- Make a copy of any Live Laugh Grow Academy software program, for any reason.
- Install a Live Laugh Grow Academy software program on a home computer.
- Install a personal software program (that is, software owned by the employee) on any Live Laugh Grow Academy computer.

Live Laugh Grow Academy may audit Live Laugh Grow Academy -owned computers at any time to ensure compliance with this policy.

SECTION 16 EMPLOYEE RECORDS

16.1 Your Personnel File

Live Laugh Grow Academy maintains a personnel file on each employee. The purpose of this file is to allow us to make decisions and take actions that are personally important to you, including notifying your family in case of an emergency, calculating income tax deductions and withholdings, and paying for appropriate insurance coverage.

16.2 Confidentiality of Personnel Files

Because the information in your personnel file is by its nature personal, we keep the file as confidential as possible. We allow access to your file only on a need-to-know basis.

16.3 Please Notify Us if your Information Changes

Because we use the information in your personnel file to take actions on your behalf, it is important that the information in that file be accurate. Please notify your supervisor whenever any of the following changes:

- your name
- your mailing address
- your phone number
- your dependents
- the number of dependents you are designating for income tax withholding
- your marital status
- the name and phone number of the individual whom we should notify in case of an emergency, or restrictions on your driver's license.

SECTION 17

DRUGS AND ALCOHOL

17:1 Policy Against Alcohol and Illegal Drug Use

The sale, offer to sell, purchase, use, transfer or possession of illegal drugs while on Live Laugh Grow Academy premises or property is prohibited. Violation of this rule will result in disciplinary action, up to and including termination. Termination is likely for a violation of this rule, even for a first offense.

Illegal drug means any drug that: (a) is not legally obtainable, or (b) is legally obtainable, but has not been legally obtained. The term includes marijuana, cocaine, and other illegal drugs, prescribed drugs not legally obtained, prescribed drugs not being used for prescribed purposes, and any substance that a person offers to another as an illegal drug.

No employee shall bring drug paraphernalia onto facility property or into facility vehicles. Drug paraphernalia includes pipes, bongs, rolling papers and other items used in the ingestion or consumption of illegal drugs.

Legal Drugs:

Legal drugs include prescribed or over-the-counter drugs that have been legally obtained and are being used for the purpose for which they were prescribed and manufactured.

No prescription drug shall be brought upon facility premises by any person other than the person for whom the drug is prescribed by a licensed medical practitioner and shall be used only in the manner, combination and quantity prescribed. The use, possession, sale, offer to sell, transfer, or purchase of legal drugs, except under conditions specifically permitted herein, is prohibited. Violation of this policy can result in disciplinary action, up to and including termination, even for a first offense.

If any employee has any question or concern as to their ability to safely or efficiently perform their job while taking a prescription drug or other medication, the employee has an affirmative obligation to report the use of that drug or medication to their Supervisor, who will contact the Director for a determination of the ability of the employee to work while using that drug. In this case, an employee may continue to work, even while taking a legal drug, if Live Laugh Grow Academy has determined, after consulting with the employee's physician, that the employee does not pose a threat to his or her own safety, the patients' safety, or the safety of co-workers and that the employee's job performance is not significantly affected by the legal drug. Otherwise, the employee may be required to take leave of absence or comply with other appropriate actions determined by management. If eligible, accrued Paid Time Off and/or Extended Sick Leave may be elected. To verify eligibility, please refer to the Personnel Policies regarding them.

Failure to report prescription drugs to the Supervisor so that a determination of fitness to work can be made can result in disciplinary action, up to and including termination.

Alcohol:

No alcoholic beverages may be brought onto or consumed on Live Laugh Grow Academy premises. In other words, the use of alcoholic beverages on Live Laugh Grow Academy property by employees is prohibited. Violation of this rule can result in disciplinary action, up to and including termination of employment, even for a first offense.

2. Prohibition Against Employees Having Illegal Drugs or Alcohol in Their Bodies During Working Time:

Employees must not have illegal drugs or their metabolites or alcohol in their bodies at any time while on the job. Compliance with these rules is considered an essential job qualification for all employees. Violation may result in disciplinary action, up to and including termination of employment.

3. Enforcement of Rule Prohibiting Employees from Having Illegal Drugs or Alcohol in Their Bodies During Working Time:**Pre-Employment Alcohol/Drug Screening:**

Upon being offered employment with Live Laugh Grow Academy, the prospective employee will be required to pass a drug screen test administered by Live Laugh Grow Academy. The prospective employee refusing to submit to such examination will not be hired by Live Laugh Grow Academy. The prospective employee failing the drug screen test will be rejected from further consideration from employment with Live Laugh Grow Academy for a period of six months.

Reasonable Suspicion Alcohol/Drug Screening:

When Live Laugh Grow Academy has a reasonable suspicion that an employee or group of employees is, or may be, impaired or affected on the job by alcohol or illegal drugs, an employee may be required to submit to an alcohol/drug screen test immediately upon demand by Live Laugh Grow Academy.

Refusal to submit to such a test will be considered insubordination and grounds for dismissal. Any employee failing such a test will be subject to dismissal from employment with Live Laugh Grow Academy.

A reasonable suspicion may arise from the circumstances of a particular accident or injury occurring on the job, from a physical altercation between employees, from an obvious impairment of physical or mental abilities such as slurred speech or difficulty in maintaining balance, from unexplained significant deterioration in job performance, admissions regarding drug use, or from any other evidence reasonably giving rise to suspicion of on-the-job impairment from the use of alcohol or illegal drugs.

Should an employee of Live Laugh Grow Academy feel they have been treated unfairly, they have the right to file a grievance.

Random Drug Testing:

All Live Laugh Grow Academy employees will be subject to random drug testing. The name and employee number of all employees will be placed in a container and five names will be selected quarterly for random drug testing.

Upon being randomly selected for the drug test, employees will be escorted to the Laboratory immediately where they will sign a consent form. If a selected employee is not on work duty at the time of selection, they will be notified at their first scheduled shift following the drawing.

Refusal to submit to a random drug testing will be considered insubordination and grounds for dismissal. Any employee failing such a test will be subject to dismissal from employment with Live Laugh Grow Academy.

17.2 Inspections to Enforce Drug and Alcohol Policy

Live Laugh Grow Academy reserves the right to inspect employees, their possessions, and their workspaces to enforce our policy against illegal drug and alcohol use.

SECTION 18 TRADE SECRETS AND CONFLICTS OF INTEREST

18.1 Confidentiality and Proprietary Secrets

During your employment here, you will deal daily with sensitive information, either because you help to develop that information or because you need that information to do your job. Sensitive information about children and their families must be kept confidential. It is important for the health of Live Laugh Grow Academy that you keep information you learn through your employment confidential. Employees who improperly disclose sensitive information, confidential information, proprietary information, or trade secret information to anyone outside Live Laugh Grow Academy will face disciplinary action, up to and including termination.

After you leave Live Laugh Grow Academy, you are still legally prohibited from disclosing sensitive, proprietary, or confidential information learned about Live Laugh Grow Academy, children and families. If you disclose such information, we will seek legal remedies.

18.2 Conflicts of Interest

We expect all employees to devote their energies and loyalties to Live Laugh Grow Academy. We do not allow employees to engage in any activities or relationships that create either an actual conflict of interest or the potential for a conflict of interest.

Although we cannot list every activity or relationship that would create either an actual or potential conflict of interest, examples of activities that violate this policy include the following:

- working for a competitor or customer or vendor as a part-time employee, full-time employee, consultant, or independent contractor, or in any other capacity
- owning an interest in a competitor, customer, vendor, or anyone else who seeks to do business with Live Laugh Grow Academy
- using the resources of Live Laugh Grow Academy for personal gain, and
- using your position with Live Laugh Grow Academy for personal gain.

Employees who violate this policy will face disciplinary action, up to and including termination. If you are unsure about whether an activity might violate this policy, or if you have any questions at all about this policy, please talk to your supervisor.

18.3 Outside Employment, Consulting, & Honoraria Policy

Live Laugh Grow Academy requires that all regular employees notify the Director of any outside employment or consulting assignments. Such activities will be reviewed for consistency with the best interests of Live Laughh Grow Academy and/or clients. Examples of outside employment that could raise conflict of interest question are:

- Performing services for clients or potential clients for payment directly to you by the client;
- Use of Live Laugh Grow Academy equipment, supplies, or facilities to benefit another employer;
- Performing services that Live Laugh Grow Academy itself, can perform; or
- Employment that prevents you from meeting your responsibilities to Live Laugh Grow Academy or to one of our clients (e.g. not being available to meet deadlines or client needs, being late for

work and/or having to take time off from work, coming to work tired and unable to effectively perform job duties).

SECTION 19 DISCRIMINATION AND HARASSMENT

19.1 Our Commitment to Equal Employment Opportunity

Live Laugh Grow Academy is strongly committed to providing equal employment opportunity for all employees and all applicants for employment. All employment decisions at Live Laugh Grow Academy – including those relating to hiring, promotion, transfers, benefits, compensation, placement, and termination – will be made without regard to race, gender, national origin, or any other prohibited factor.

Any employee or applicant who believes that he or she has been discriminated against in violation of this policy should immediately file a complaint, as explained in our Complaint Policy, in Section 20. We encourage you to come forward if you have suffered or witnessed what you believe to be discrimination – we cannot solve the problem until you let us know about it. Live Laugh Grow Academy will not retaliate, or allow retaliation, against any employee or applicant who complains of discrimination, assists in an investigation of possible discrimination, or files an administrative charge or lawsuit alleging discrimination. All managers are required to immediately report any discriminatory conduct or incidents, as set forth in our Complaint Policy.

Live Laugh Grow Academy will not tolerate discrimination against any employee or applicant. We will take immediate and appropriate disciplinary action against any employee who violates this policy.

19.2 Harassment Will Not Be Tolerated

It is our policy and our responsibility to provide our employees with a workplace free from harassment. Harassment can take many forms, including but not limited to touching or other unwanted physical contact, posting offensive cartoons or pictures, using slurs or other derogatory terms, telling offensive or lewd jokes and stories, and sending email messages with offensive content. Unwanted sexual advances, requests for sexual favors and sexually suggestive gestures, jokes, propositions, email messages, or other communications all constitute harassment.

If you experience or witness harassment in the workplace, please immediately notify Live Laugh Grow Academy by following the steps outlined in our Complaint Policy. We encourage you to come forward with complaints – the sooner we learn about the problem, the sooner we can take steps to resolve it. Live Laugh Grow Academy will not retaliate, or allow retaliation, against anyone who complains of harassment, assists in a harassment investigation, or files an administrative charge or lawsuit alleging harassment. All managers are required to immediately report any incidents of harassment, as set forth in our Complaint Policy.

Live Laugh Grow Academy will not tolerate harassment against any employee or applicant. We will take immediate and appropriate disciplinary action against any employee who violates this policy.

SECTION 20 COMPLAINT POLICIES

Live Laugh Grow Academy is committed to providing a safe and productive work environment, free of threats to the health, safety, and well-being of our workers. These threats include, but are not limited to, inappropriate treatment of children in the program, harassment, discrimination, violations of health and safety rules, and violence.

Any employee, volunteer or intern who witnesses or is subject to inappropriate conduct in the workplace should first bring the complaint to their immediate supervisor. If the complaint is not adequately responded to, or involves the supervisor it should be brought to the attention of the Program Director. Any supervisor or manager, who receives a complaint about, hears of, or witnesses any inappropriate conduct is required to immediately notify the Program Director. Inappropriate conduct includes any conduct prohibited by our policies about treatment of children or parents, harassment, discrimination, discipline, workplace violence, health and safety, and drug and alcohol use. In addition, we encourage employees to come forward with any workplace complaint, even if the subject of the complaint is not explicitly covered by our written policies.

If a complaint of inappropriate conduct involves the Program Director, the employee should first bring the problem to the attention of the Program Director. If the topic is too sensitive to discuss with the Program Director, or no resolution is gained by first speaking with the Program Director, a written complaint should be presented via email to the President of the Board of Directors. The written complaint must include: 1 An account of what happened (or is happening; 2 The date(s) of occurrence; 3 When and what happened when the complaint was brought to the attention of the Program Director (or why such a notification is inappropriate; and 4 A suggested resolution of the problem. If the complaint is of an immediate nature a phone call should be made, which should be followed by a written complaint.

We encourage you to come forward with complaints immediately, so we can take whatever action is needed to handle the problem. For serious complaints alleging harassment, discrimination, and other illegal conduct, we will immediately conduct a complete and impartial investigation. All complaints will be handled as confidentially as possible. When the investigation is complete, Live Laugh Grow Academy will take corrective action, if appropriate.

We will not engage in or allow retaliation against any employee who makes a good faith complaint or participates in an investigation. If you believe that you are being subjected to any kind of negative treatment because you made or were questioned about a complaint, report the conduct immediately to your supervisor or Live Laugh Grow Academy's Director.

SECTION 21 ENDING EMPLOYMENT

21.1 Termination/Resignation Policy

An employee is free to resign their position at any time, with or without cause, and with or without notice. However, to ease transitions and transfer of responsibilities, employees in non-exempt positions are asked to provide two (2 weeks' notice prior to leaving Live Laugh Grow Academy. Employees in exempt positions are asked to provide four (4 weeks' notice prior to leaving Live Laugh Grow Academy.

Live Laugh Grow Academy may elect to terminate its employment with employees at its discretion, with or without prior notice.

In cases where an employee is at risk of termination due to substandard job performance, he/she may be presented with a written performance improvement plan. If at the conclusion of the performance improvement plan period the employee does not successfully complete the goals, they may be terminated.

21.2 Final Paychecks

Your final paycheck is provided on the next pay date after being dismissed. .

Final paychecks will include all compensation earned but not paid through the date of termination.

21.3 References

Live Laugh Grow Academy respects the time and devotion that employees in good standing have contributed during their employment. If a recommendation letter is requested by a current or past employee, whether or not a letter is written is at the discretion of the supervisor. If a supervisor cannot write a supportive letter of recommendation, or does not feel that he/she knows the employee well enough to write a letter, it will not be written. Live Laugh Grow Academy does not permit supervisors to write confidential letters of evaluation about employees unless they have permission from the Program Director and the Program Director has approved the letter before it is sent. If a non-confidential letter is requested from an employee and includes critical content, the evaluation must be shared with the supervisor in advance, and may be shared with the employee in advance of sending.

Live Laugh Grow Academy Employee Handbook Acknowledgment Form

By signing this form, I acknowledge that I have received a copy of Live Laugh Grow Academy 's Employee Handbook. I understand that it contains important information about Live Laugh Grow Academy's policies, that I am expected to read the Handbook and familiarize myself with its contents, and that the policies in the Handbook apply to me. I understand that nothing in the Handbook constitutes a contract or promise of continued employment and that Live Laugh Grow Academy may change the policies in the Handbook at any time.

By signing this form, I acknowledge that my employment is at will. I understand that I have the right to end the employment relationship at any time and for any reason, with or without notice, with or without cause, and that Live Laugh Grow Academy has the same right. I acknowledge that neither Live Laugh Grow Academy nor I have entered into an employment agreement for a specified period of time, that only the Program Director, has the authority to approve such agreements. Nothing in this Handbook constitutes a contract or promise of continued employment.

Employee's Name (Print) _____

Live Laugh Grow Academy Employee Handbook Acknowledgment Form

By signing this form, I acknowledge that I have received a copy of Live Laugh Grow Academy 's Employee Handbook. I understand that it contains important information about Live Laugh Grow Academy's policies, that I am expected to read the Handbook and familiarize myself with its contents, and that the policies in the Handbook apply to me. I understand that nothing in the Handbook constitutes a contract or promise of continued employment and that Live Laugh Grow Academy may change the policies in the Handbook at any time.

By signing this form, I acknowledge that my employment is at will. I understand that I have the right to end the employment relationship at any time and for any reason, with or without notice, with or without cause, and that Live Laugh Grow Academy has the same right. I acknowledge that neither Live Laugh Grow Academy nor I have entered into an employment agreement for a specified period of time, that only the Program Director, has the authority to approve such agreements. Nothing in this Handbook constitutes a contract or promise of continued employment.

Employee's Name (Print) _____

Employee's Signature

Date