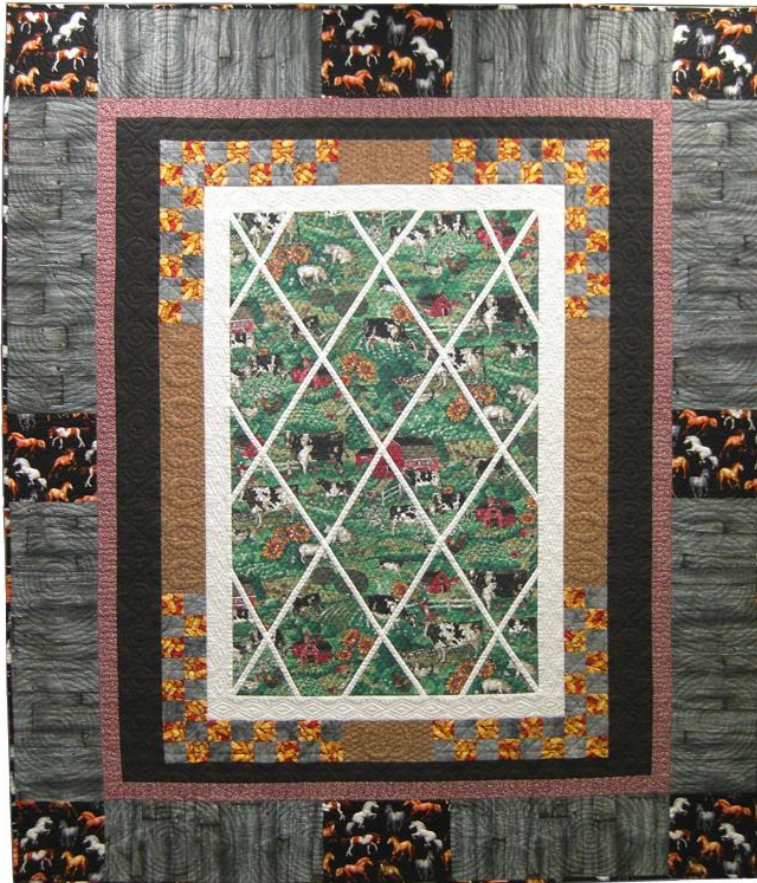


**Farm Scene #2 (76" x 64"/ 193 x 162.5cm)**  
© 2003-2008 Jean M. Judd/Artists Rights Society (ARS) New York  
**Hand Stitched Thread on Commercial Textile**  
**\*\*Sold on Commission (USA) \*\***  
**Budget: \$9,500**



This is the second in the series of quilts based off the center panel. This piece is much larger, different windowpane design, and has more intricate and dense hand quilting. The white "panes" are hand appliquéd to the whole cloth center panel. There are horseshoes hand stitched in the brown border sections, and a diamond grid is quilted in the center panel to symbolize rain falling at an angle. The owners of this quilt have a deep love of horses, so horse fabric was also found and included in the piece as the border units.



Detail image of artwork



View of back of artwork