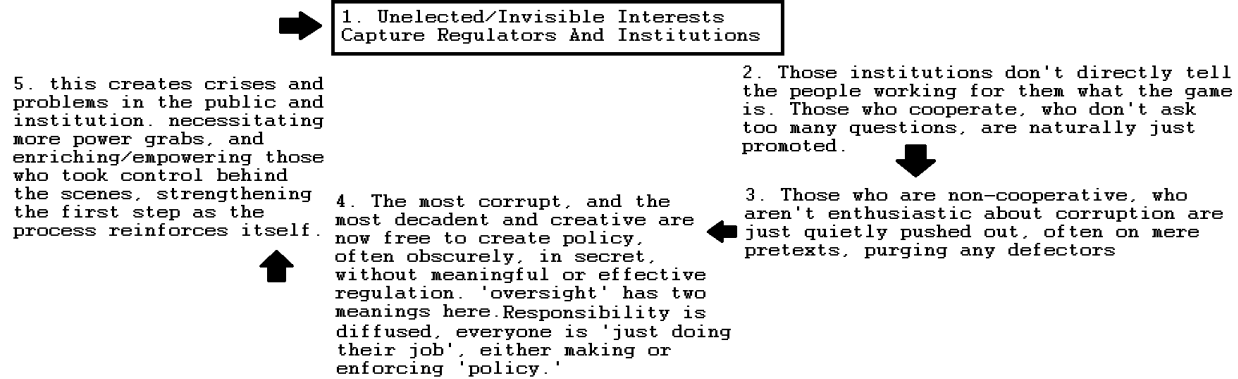


## BASILISK - A Model

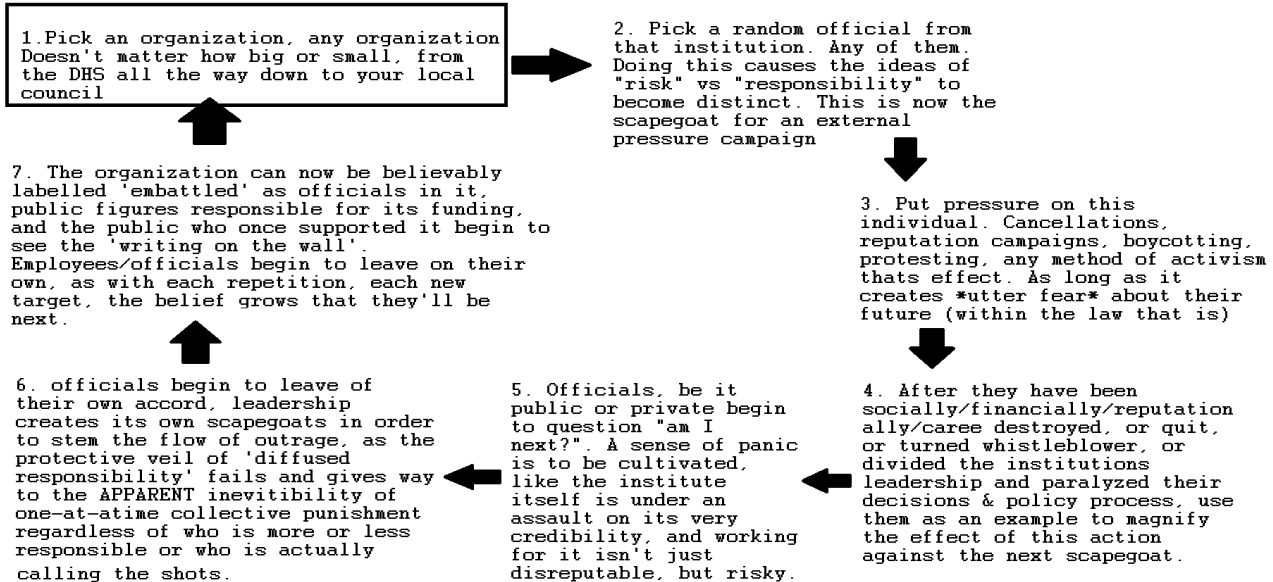
### How The Regime Works



---

This is the best explanation for what is going on across the world today. Heres how we beat it.

### BASILISK - A Model Of Retaliation In Diffuse Environs.



P.S.

\* Centipede Nation has successfully been executing this model against the FBI for over a year now. The public is psychologically prepared for their agency to soon be labelled 'embattled'.

\* The effectiveness of this strategy is that it is contagious. The act of protecting one individual at an institution against the public campaign against them necessarily means taking responsibility, which concentrates risk, which breaks their entire model. At each repetition of the cycle, any attempt to save targetted officials, or targetted organizations by other officials or other institutions must necessarily reveal who is up-stream of the target, in terms of actual influence/decision making/control/responsibility. Therefore any attempt to save these individual officials or institutions, reveal the (unofficial) structure of their illegal influence network.

The only choice the managerial regime has against the basilisk is either to doubledown, (which accelerates the public's alienation and thus destabilization of the regime), or the regime is forced to abandon each new target of activism, be it individual officials, or whole institutions, leading to dissension in the ranks and infighting.