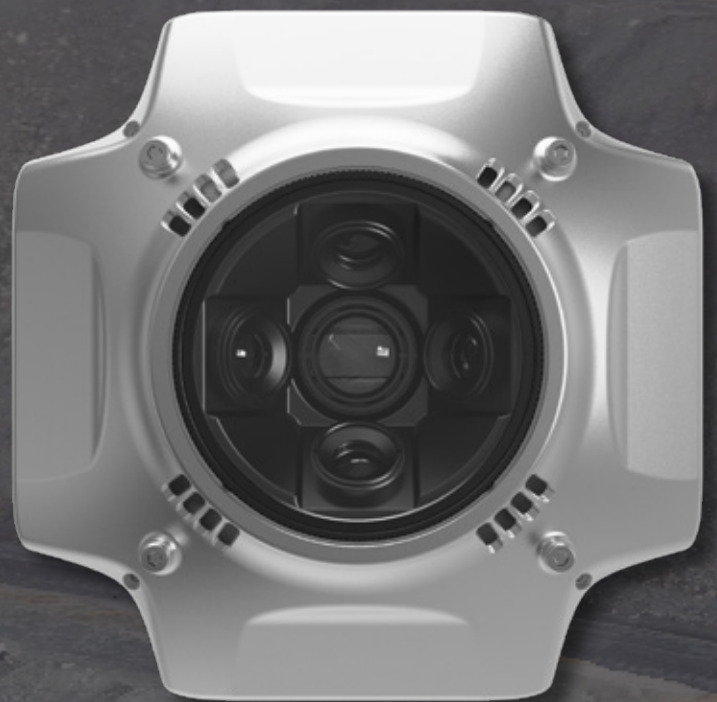


CHCNAV

HC-D2

**FIVE-LENS OBLIQUE CAMERA
FOR 3D MODELING**



**MAPPING
& GEOSPATIAL**

HIGH PRECISION AERIAL OBLIQUE CAMERA

The D2 is a high-compatibility oblique camera that can be mounted on multi-rotor and fixed-wing VTOL drones for real-world 3D modeling and large-scale mapping data production. When used with PPK/RTK-compatible UAVs, the D2 can produce 3D models with 3 cm accuracy without ground control points (GCP). This oblique camera combines the advantages of light weight, small size, excellent lens focal length and low maintenance cost. Highly versatile, the D2 demonstrates great adaptability to surveying projects in a variety of weather conditions and seamless and fast image transfer through its internal data storage.

- Bespoke optical lens designed for photogrammetry.
- Advanced data pre-processing software to download photos in one click and save time during the 3D modeling process.
- Easy to use thanks to the control of the camera via a smartphone connected in Bluetooth.
- Robust and safe with CNC aluminum alloy shell for optimal lens protection.
- Optimal focal lengths with one 25mm vertical and four 35mm obliques to ensure resolution consistency of all 5 lenses.
- Synchronization control supports time synchronization technology to enhance RTK positioning data accuracy.
- The independent data storage module provides photo download speeds of up to 300 m/s.
- Sky-filter software features to eliminate invalid photos in the extended flight route.
- Settings module to adjust ISO and shutter speed for the five lenses to suit the weather conditions.

 **HIGH PRECISION
AERIAL OBLIQUE**



**HIGH COMPATIBILITY
OBLIQUE CAMERA.**

SPECIFICATIONS

Technical Parameters	
N° of Lens	5
Effective pixels	24.3 MP (single lens) / 120 MP
Focal length	25 mm (vertical) / 35 mm (oblique)
Size	160 mm x 160 mm x 84 mm
Weight	960 g
Sensor size	APS-C, 23.5 mm x 15.6 mm
Exposure interval	≥ 0.8 s
Camera exposure mode	Isochronic / Isometric Exposure
Lens angle	45°
Power supply	Powered by drone
Storage	2 x 640 GB
Data download speed	≥ 300 MB/s
Work temperature	-10°C ~ +50°C 14°F ~ 122°F
IP rate	IP 43

*All specifications are subject to change without notice.

© 2022 Shanghai Huace Navigation Technology Ltd. All rights reserved. The CHC and CHC logo are trademarks of Shanghai Huace Navigation Technology Limited. All other trademarks are the property of their respective owners. Revision June 2022.

WWW.CHCNAV.COM | SALES@CHCNAV.COM

CHC Navigation Headquarter
Shanghai Huace Navigation Technology Ltd.
599 Gaojing Road, Building D,
Shanghai, 201702, China
+86 21 54260273

CHC Navigation Europe
Infopark Building , Sétány 1, 1117 Budapest,
Hungary
+36 20 235 8248
+36 20 5999 369
info@chcnav.eu

CHC Navigation USA LLC
6380 S. Valley View Blvd Suite 246
Las Vegas, NV 89118 USA
+1 480 399 9533

CHC Navigation India
409 Trade Center, Khokhra Circle,
Maninagar East, Ahmedabad,
Gujarat, India
+91 90 99 98 08 02