

---

# **SK60 SKID STEER LOADER**

## **SPARE PARTS CHART**

### **SK60**

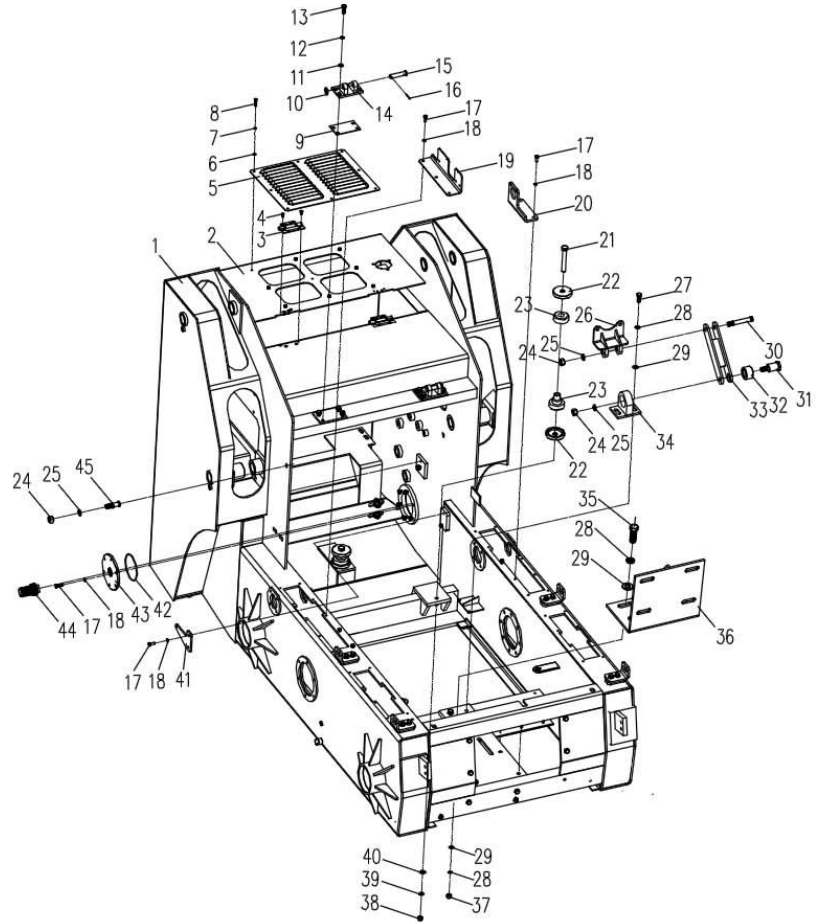


## Working arm assembly

NO.	Part No.	Name		Company No.	Qty./set	Remark
		English	中文			
1	ZJ6001001	Pull rod weldment	拉杆焊合件		2	
2	ZJ6001002	Rocker weldment	摇臂焊合件		2	
3	ZJ6001003	Working arm weldment	工作臂焊合件		1	
4	ZJ6001004	Nut M10	自锁螺母 M10		2	
5	ZJ6001005	Washer 10	垫圈 10		20	
6	ZJ6001006	Washer 10	垫圈 10		20	
7	ZJ6001007	Bush 2	定位套 2		2	
8	ZJ6001008	Spring	弹簧		4	
9	ZJ6001009	Bush 1	定位套 1		2	
10	ZJ6001010	Washer 24	垫圈 24		4	
11	ZJ6001011	Handle 1、2	手柄 1、2		1/piece	
12	ZJ6001012	Connecting shaft	连接轴		2	
13	ZJ6001013	split pin 3.2×30	开口销 3.2×30		2	
14	ZJ6001014	springiness pin 12×40	弹性销 12×40		2	
15	ZJ6001015	transmission shaft II	传动轴 II		2	
16	ZJ6001016	press spring	压簧		2	
17	ZJ6001017	transmission shaft I	传动轴 I		2	
18	ZJ6001018	locating shaft	定位轴		2	
19	ZJ6001019	fixed bolt	固定螺栓		2	
20	ZJ6001020	pin shaft V joint part	销轴 5 合件		2	
21	ZJ6001021	hanging frame weldment	挂架焊合件		1	
22	ZJ6001022	pin shaft III joint part	销轴 3 合件		2	
23	ZJ6001023	bolt M10×20	螺栓 M10×20		18	
24	ZJ6001024	arm shock absorption block	大臂减震块		2	
25	ZJ6001025	pull rod pin shaft	拉杆销轴		4	
26	ZJ6001026	pin shaft VI joint part	销轴 VI 合件		2	
27	ZJ6001027	pin shaft II joint part	销轴 2 合件		2	
28	ZJ6001028	bolt M8x65	螺栓 M8x65		1	
29	ZJ6001029	butterfly nut	蝶形螺母		1	
30	ZJ6001030	cylinder fixed bracket	油缸固定支架		1	
31	ZJ6001031	pin shaft VII joint part	销轴 VII 合件		4	
32	ZJ6001032	pin shaft I joint part	销轴 I 合件		2	
33	ZJ6001033	bush	衬套		4	
34	ZJ6001034	oil cap M10x1	油杯 M10x1		8	

车体总成1

ZJ60

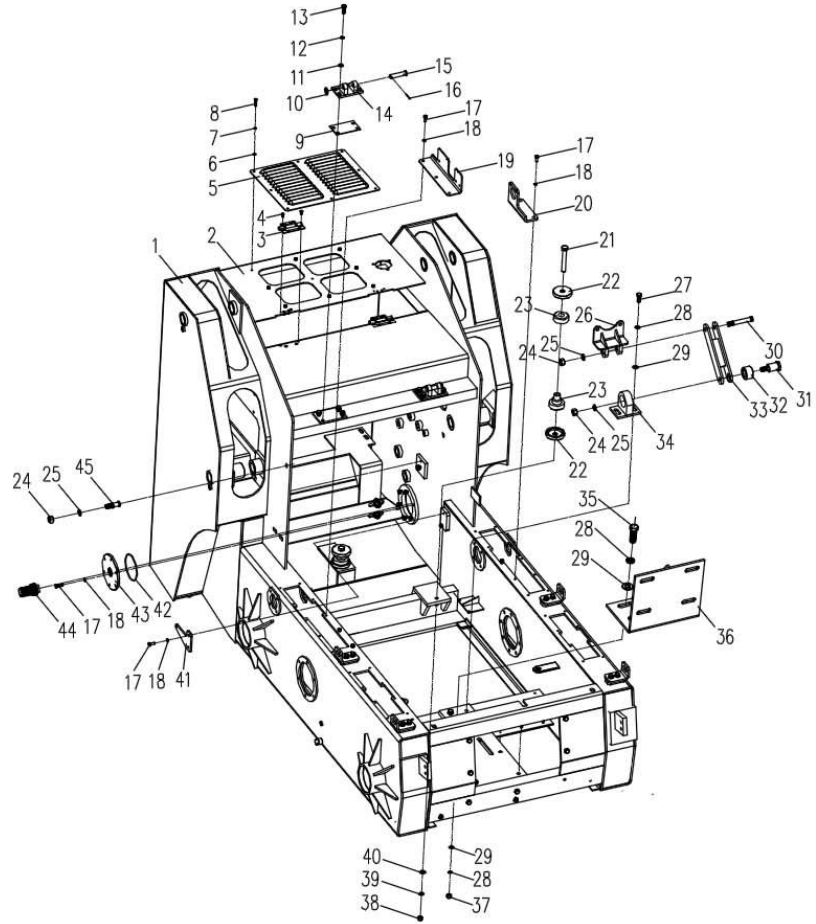


## Chassis assembly 1

NO.	Part No.	Name		Company No.	Qty./set	Remark
		English	中文			
1	ZJ6002001	Frame weldment	车架焊合件		1	
2	ZJ6002002	smoke displacement cover	排烟盖板		1	
3	ZJ6002003	Axis	合页		2	
4	ZJ6002004	Stud M6×15	沉头螺钉 M6×15		16	
5	ZJ6002005	scale cover	鱼鳞盖板		1	
6	ZJ6002006	Flat Washer 6	平垫圈 6		8	
7	ZJ6002007	Spring Washer 6	弹簧垫圈 6		8	
8	ZJ6002008	bolt M6×16	螺栓 M6×16		8	
9	ZJ6002009	adjusting washer	调整垫片		2	
10	ZJ6002010	Flat Washer 16	平垫圈 16		4	
11	ZJ6002011	Flat Washer 10	平垫圈 10		15	
12	ZJ6002012	Spring Washer 10	弹簧垫圈 10		15	
13	ZJ6002013	bolt M10×30	螺栓 M10×30		8	
14	ZJ6002014	cab back fixed cover	驾驶室后固定板		2	
15	ZJ6002015	Cab fixed pin	驾驶室安装销		2	
16	ZJ6002016	split pin 3.2×30	开口销 3.2×30		2	
17	ZJ6002017	bolt M8×20	螺栓 M8×20		15	
18	ZJ6002018	Spring Washer 8	弹簧垫圈 8		15	
19	ZJ6002019	solenoid valve fixed board 3	电磁阀安装板 3		1	
20	ZJ6002020	three-way valve fixed board	三通阀安装板		1	
21	ZJ6002021	bolt M16×110	螺栓 M16×110		8	
22	ZJ6002036	Damping block washer	减震块垫片		16	
23	ZJ6002022	Damping block	减震块		4	
24	ZJ6002023	nut M 16	螺母 M16		3	
25	ZJ6002024	Spring Washer 16	弹簧垫圈 16		3	

车体总成1

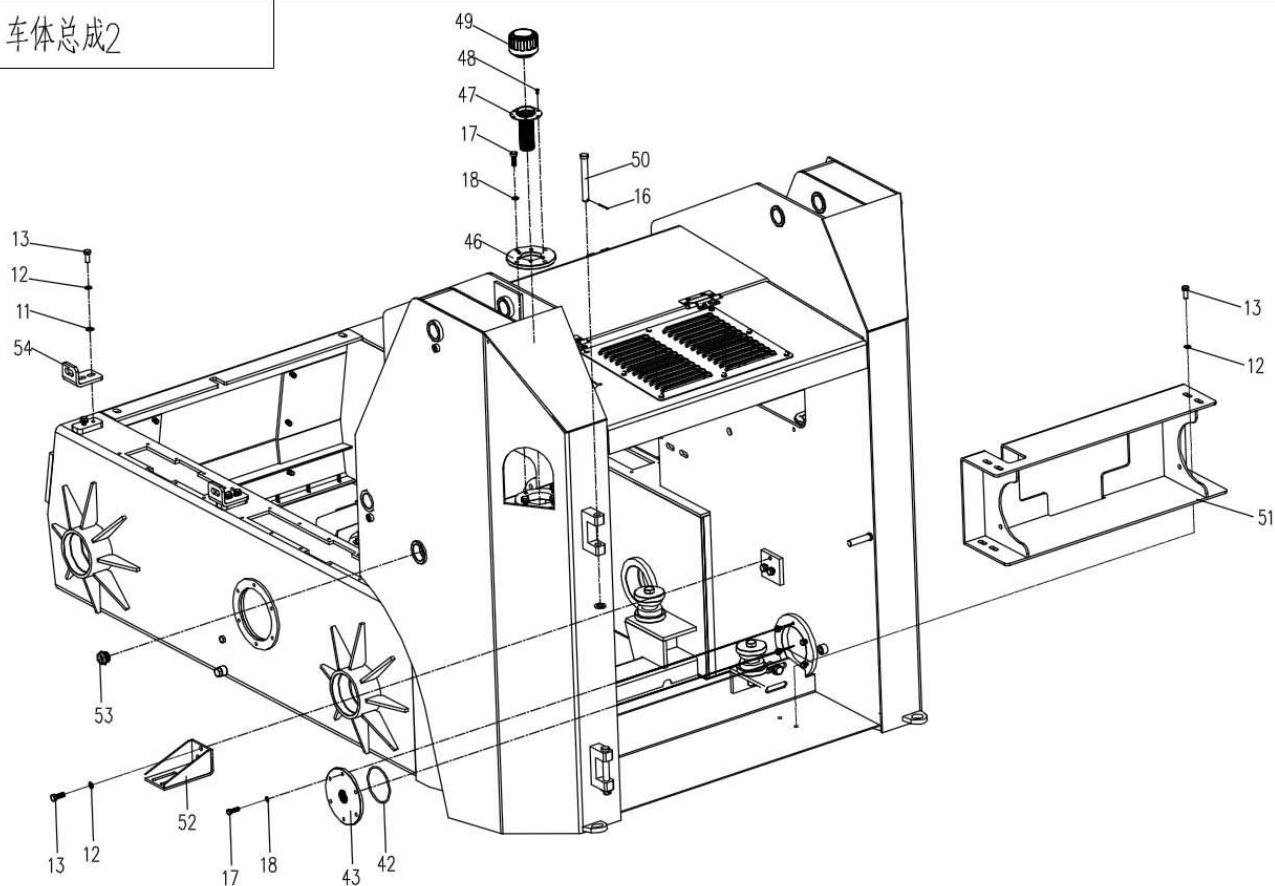
ZJ60



NO.	Part No.	Name		Company No.	Qty./set	Remark
		English	中文			
26	ZJ6002025	oil pump plate combination	油泵支板合件		1	
27	ZJ6002026	bolt M14×25	螺栓 M14×25		2	
28	ZJ6002027	Spring Washer 14	弹簧垫圈 14		6	
29	ZJ6002028	Flat Washer 14	平垫圈 14		6	
30	ZJ6002029	Damping block Supporting shaft 2	减震块支撑轴 2		1	
31	ZJ6002030	Damping block Supporting shaft 1	减震块支撑轴 1		1	
32	ZJ6002031	Elastic ring	弹性圈		1	
33	ZJ6002032	oil pump support rod combination	油泵支杆合件		1	
34	ZJ6002033	oil pump shock absorption seat combination	油泵减震座合件		1	
35	ZJ6002034	bolt M14×40	螺栓 M14×40		4	
36	ZJ6002035	multi-way valve support board	多路阀支板		1	
37	ZJ6002040	nut M14	螺母 M14		8	
38	ZJ6002041	nut M16	螺母 M16		8	
39	ZJ6002042	Spring Washer 16	弹簧垫圈 16		8	
40	ZJ6002043	flat Washer 16	平垫圈 16		8	
41	ZJ6002044	gas Spring support board	气弹簧支板		1	
42	ZJ6002045	O-RING 103×3.55	O 型圈 103×3.55		1	
43	ZJ6002046	oil tank flanges	油箱法兰盘		1	
44	ZJ6002047	hydraulic oil filter elements joint	液压油滤芯接头		1	
45	ZJ6002048	cab Supporting shaft	驾驶室支撑轴		1	

# 车体总成2

ZJ60

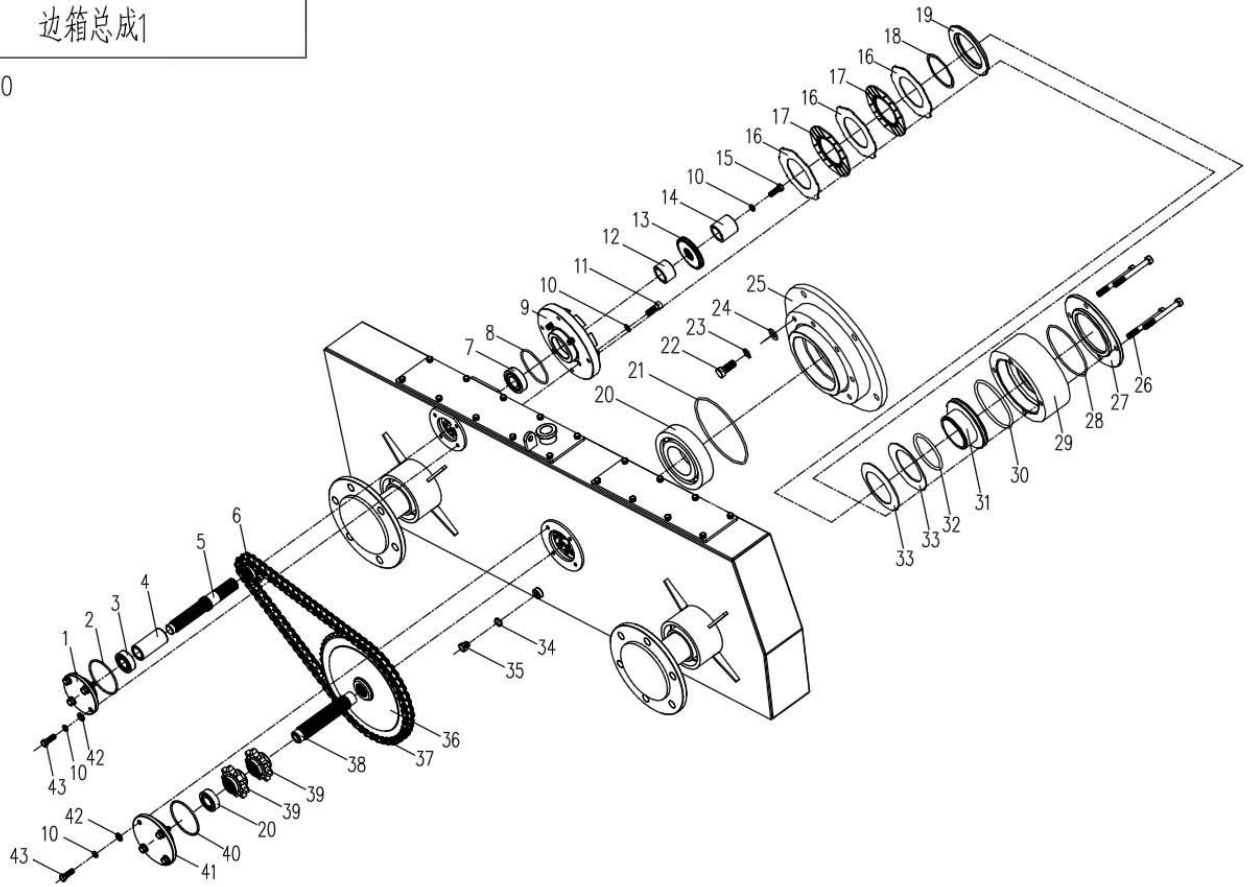






边箱总成1

ZJ60

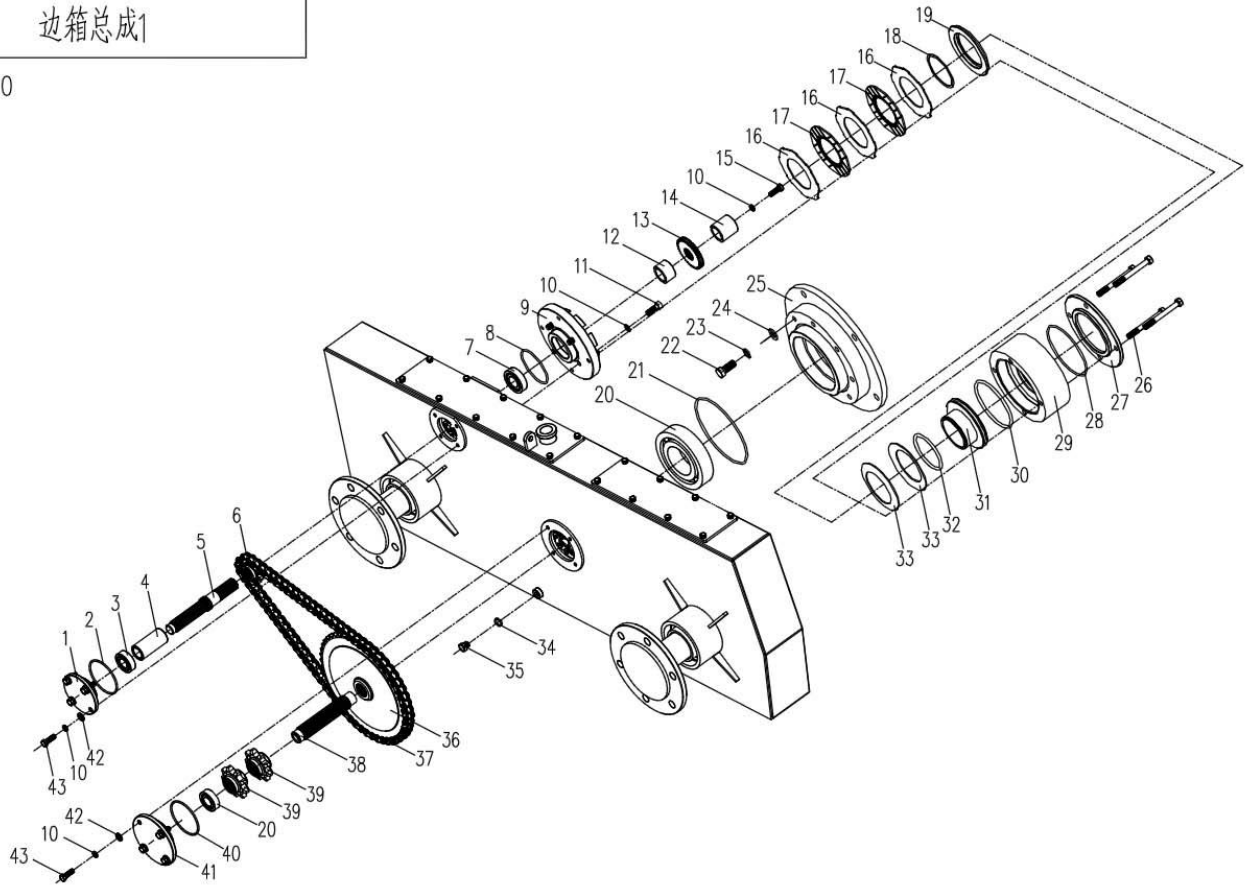


## Side gearbox assembly 1

NO.	Part No.	Name		Company No.	Qty./set	Remark
		English	中文			
1	ZJ6003001	small press cover	小压盖		2	
2	ZJ6003002	O-RING 69×3.55	O 型圈 69×3.55		2	
3	ZJ6003003	bearing 6205	轴承 6205		2	
4	ZJ6003004	long bush 1	长隔套 1		2	
5	ZJ6003005	Braking pivot	制动轴		2	
6	ZJ6003006	small decelerate chain wheel	减速小链轮		2	
7	ZJ6003007	bearing 6006	轴承 6006		2	
8	ZJ6003008	O-RING 80×3.55	O 型圈 80×3.55		2	
9	ZJ6003009	brake bearing seat	制动器轴承座		2	
10	ZJ6003010	Spring Washer 10	弹簧垫圈 10		30	
11	ZJ6003011	inside hexagon screw M10×25	内 六 方 螺 钉 M10×25		8	
12	ZJ6003012	bush	隔套		2	
13	ZJ6003013	friction plate gear	摩擦片齿轮		2	
14	ZJ6003014	pressing sleeve	压套		2	
15	ZJ6003015	bolt M10×30	螺栓 M10×30		2	
16	ZJ6003016	friction plate steel chip	摩擦片钢片		6	
17	ZJ6003017	friction plate	摩擦片		4	
18	ZJ6003018	closing ring	挡圈		2	
19	ZJ6003019	press ring	压环		2	
20	ZJ6003020	bearing 6211	轴承 6211		4	
21	ZJ6003021	O-RING 170×3.55	O 型圈 170×3.55		2	
22	ZJ6003022	bolt M16×40	螺栓 M16×40		8	
23	ZJ6003023	Spring Washer 16	弹簧垫圈 16		8	
24	ZJ6003024	flat Washer 16	平垫圈 16		8	
25	ZJ6003025	motor Connecting seat	马达连接座		2	

边箱总成1

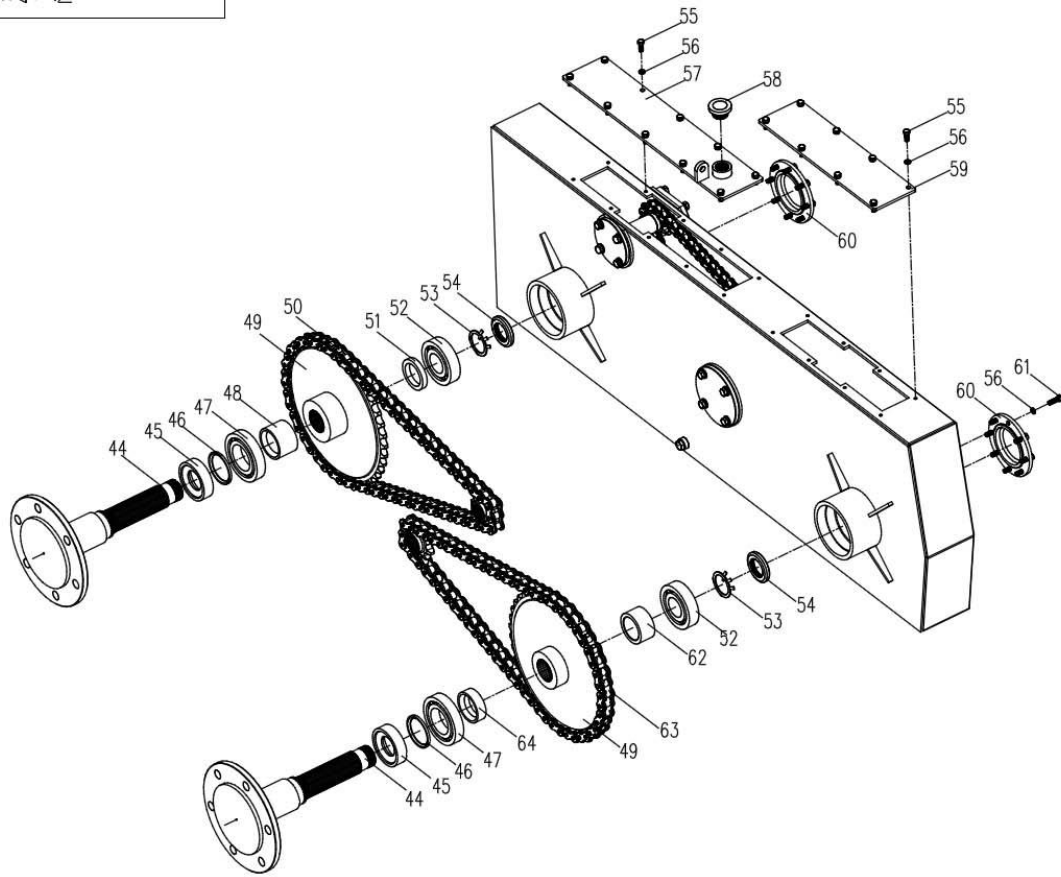
ZJ60



NO.	Part No.	Name		Company No.	Qty./set	Remark
		English	中文			
26	ZJ6003026	bolt M10×100	螺栓 M10×100		8	
27	ZJ6003027	press cover	压盖		2	
28	ZJ6003028	O-RING 122×3.55	O 型圈 122×3.55		2	
29	ZJ6003029	brake shell	制动器壳体		2	
30	ZJ6003030	O-RING 120×5.7	O 型圈 120×5.7		2	
31	ZJ6003031	press plug	压塞		2	
32	ZJ6003032	O-RING 90×5.7	O 型圈 90×5.7		2	
33	ZJ6003033	butterfly spring	蝶簧		4	
34	ZJ6003034	compound gasket 14	组合垫 14		2	
35	ZJ6003035	screw-plug	螺塞		4	
36	ZJ6003036	big brake chain wheel	制动大链轮		2	
37	ZJ6003037	chain 12A-1-64	链条 12A-1-64		2	
38	ZJ6003038	input shaft of side gearbox	边箱输入轴		2	
39	ZJ6003039	small main moving chain wheel	主动小链轮		4	
40	ZJ6003040	O-RING 140×3.55	O 型圈 140×3.55		2	
41	ZJ6003041	big press cover	大压盖		2	
42	ZJ6003042	flat Washer 10	平垫圈 10		20	
43	ZJ6003043	bolt M10×25	螺栓 M10×25		20	

边箱总成2

ZJ60

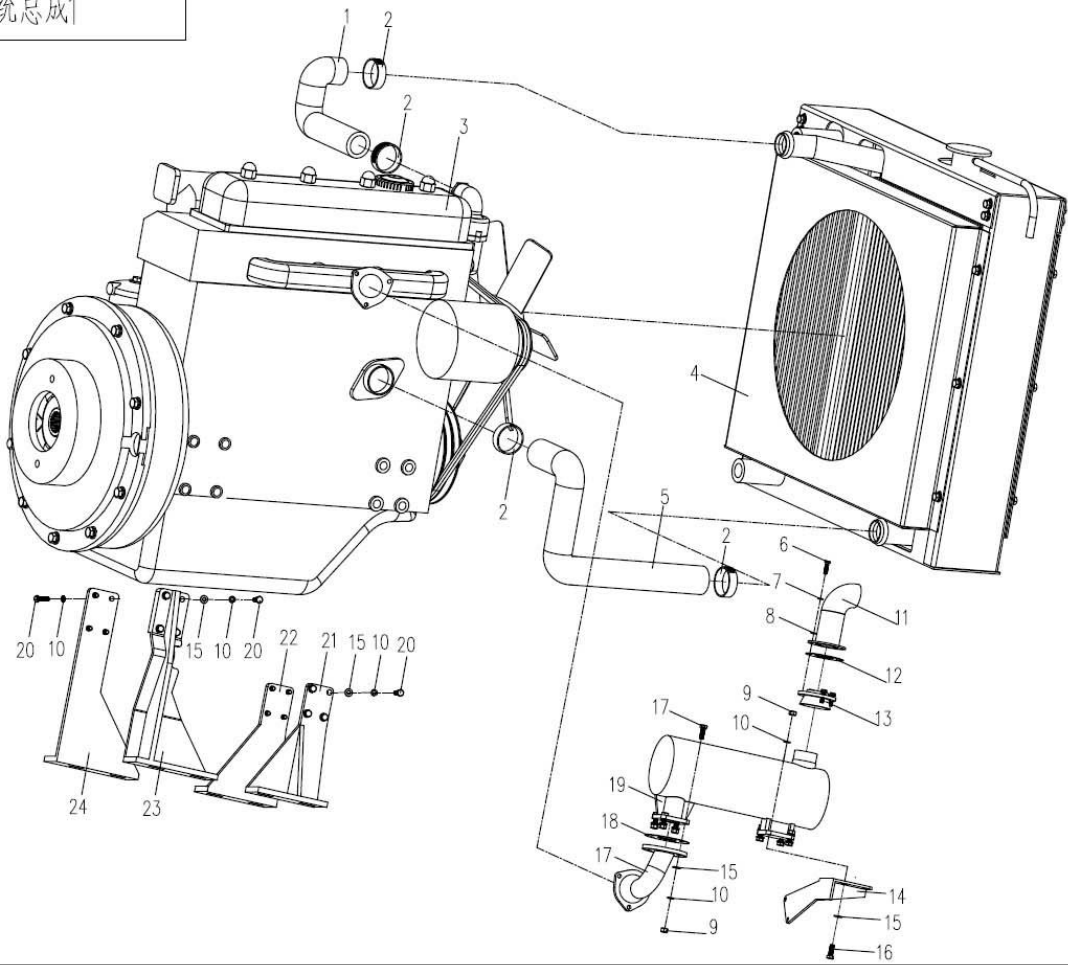


## Side gearbox assembly 2

NO.	Part No.	Name		Company No.	Qty./set	Remark
		English	中文			
44	ZJ6003044	entire output shaft	整体输出轴		4	
45	ZJ6003045	oil seal 2(115×70×10)	油封 2(115×70×10)		8	
46	ZJ6003046	output shaft bush 5	输出轴隔套 5		4	
47	ZJ6003047	bearing 22212	轴承 22212		4	
48	ZJ6003048	output shaft bush I	输出轴隔套I		2	
49	ZJ6003049	big output chain wheel	输出大链轮		4	
50	ZJ6003050	chain 16AH-1-60	链条 16AH-1-60		2	
51	ZJ6003051	output shaft bush III	输出轴隔套III		2	
52	ZJ6003052	bearing 22309	轴承 22309		4	
53	ZJ6003053	Washer 45	垫圈 45		4	
54	ZJ6003054	nut M45×1.5	圆螺母 M45×1.5		4	
55	ZJ6003055	bolt M8×20	螺栓 M8×20		36	
56	ZJ6003056	Spring Washer 8	弹簧垫圈 8		70	
57	ZJ6003057	rear upper cover of side gearbox combination	边箱后上盖合件		1	
58	ZJ6003058	refuel screw-plug combination	加油螺塞组合件		2	
59	ZJ6003059	front top cover of side gearbox	边箱前上盖		2	
60	ZJ6003045	output shaft press cover	输出轴压盖		4	
61	ZJ6003061	bolt M8×25	螺栓 M8×25		24	
62	ZJ6003062	output shaft bush II	输出轴隔套II		2	
63	ZJ6003063	chain 16AH-1-74	链条 16AH-1-74		2	
64	ZJ6003064	output shaft bush IV	输出轴隔套IV		2	

动力系统总成1

ZJ60



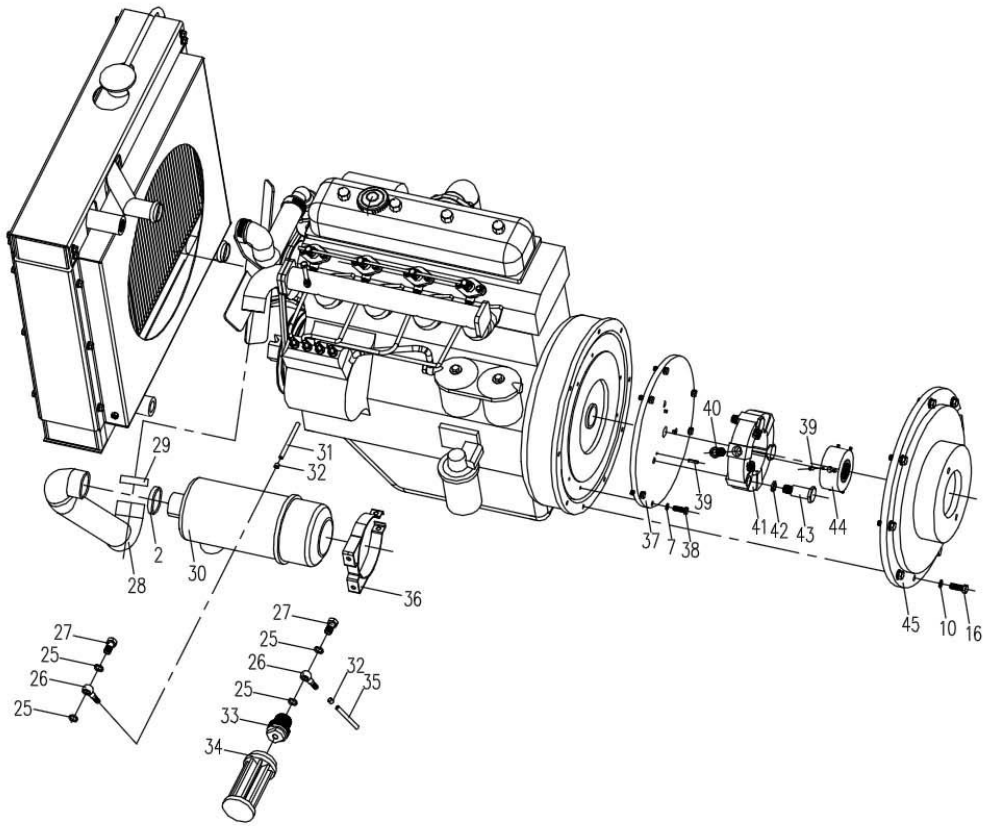


## Power system assembly 1

NO.	Part No.	Name		Company No.	Qty./set	Remark
		English	中文			
1	ZJ6004001	Upper water pipe	上水管		1	
2	ZJ6004002	Hoop Iron $\phi$ 38- $\phi$ 57	喉箍 $\phi$ 38- $\phi$ 57		4	
3	ZJ6004003	Xinchai 498 diesel engine	新柴 498 发动机		1	
4	ZJ6004004	Water and oil radiator part	水油散热器部件		1	
5	ZJ6004005	Under water pipe	下水管		1	
6	ZJ6004006	bolt M8 $\times$ 25	螺栓 M8 $\times$ 25		4	
7	ZJ6004007	Spring closing ring 8	弹簧挡圈 8		4	
8	ZJ6004008	flat Washer 8	平垫圈 8		4	
9	ZJ6004009	nut M10	螺母 M10		8	
10	ZJ6004010	Spring closing ring 10	弹簧挡圈 10		19	
11	ZJ6004011	exhaust manifold weldment	排烟管焊合件		1	
12	ZJ6004012	exhaust manifold washer	排烟管垫片		1	
13	ZJ6004013	exhaust manifold connecting weldment	排烟管接管焊合件		1	
14	ZJ6004014	muffler bracket	消声器支架		1	
15	ZJ6004015	flat Washer 10	平垫圈 10		19	
16	ZJ6004016	bolt M10 $\times$ 35	螺栓 M10 $\times$ 35		8	
17	ZJ6004017	exhaust pipe weldment	排气管焊合件		1	
18	ZJ6004018	exhaust pipe washer	排气管垫片		1	
19	ZJ6004019	muffler weldment	消声器焊合件		1	
20	ZJ6004020	bolt M10 $\times$ 25	螺栓 M10 $\times$ 25		11	
21	ZJ6004021	diesel engine outrigger 3	柴油机支腿 3		1	
22	ZJ6004022	diesel engine outrigger 4	柴油机支腿 4		1	
23	ZJ6004023	front diesel engine outrigger 2	柴油机前支腿 2		1	
24	ZJ6004024	front diesel engine outrigger 1	柴油机前支腿 1		1	

# 动力系统总成2

ZJ60

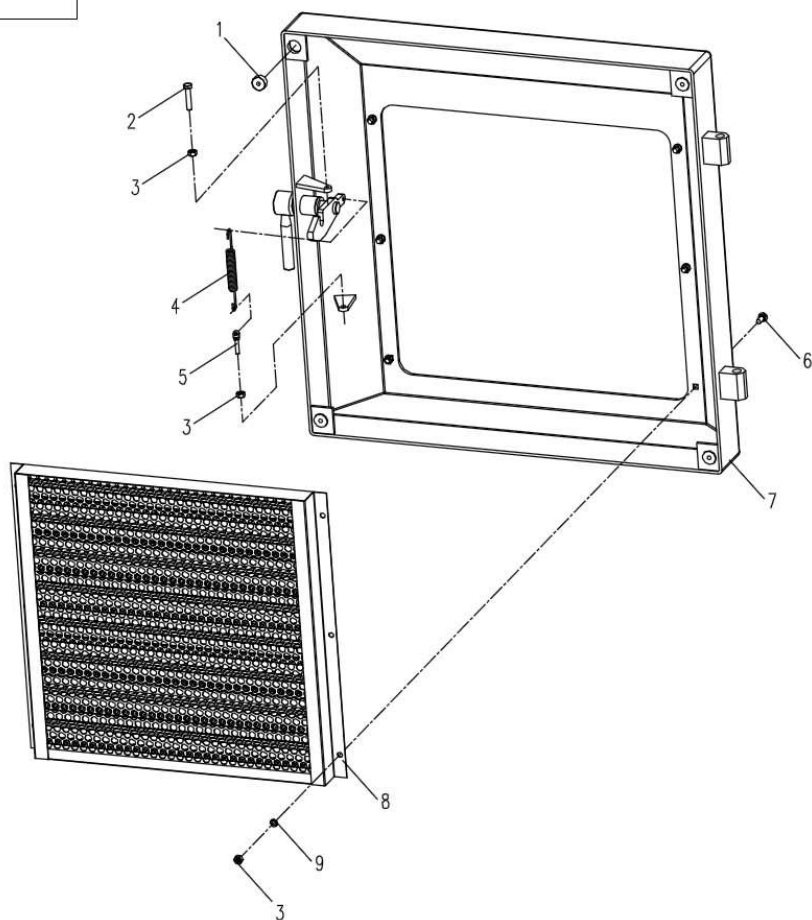


## Power system assembly 2

NO.	Part No.	Name		Company No.	Qty./set	Remark
		English	中文			
25	ZJ6004025	compound gasket 14	组合垫 14		4	
26	ZJ6004026	hinge joint 14	铰接接头 14		2	
27	ZJ6004027	hinge bolt M14×1.5	铰接螺栓 M14×1.5		2	
28	ZJ6004028	Intake pipe	进气管		1	
29	ZJ6004029	Hoop Iron φ70-φ89	喉箍φ70-φ89		1	
30	ZJ6004030	air filter	空滤器		1	
31	ZJ6004031	oil return pipe	回油管		1	
32	ZJ6004032	Hoop Iron φ10-φ16	喉箍φ10-φ16		4	
33	ZJ6004033	Fuel filter elements joint	燃油滤芯接头		1	
34	ZJ6004034	Net form filter	网式滤油器		1	
35	ZJ6004035	oil pipeline	输油管		1	
36	ZJ6004036	air filter bracket weldment	空滤器支架焊 合件		2	
37	ZJ6004037	shaft coupling Connecting plate	联轴器连接板		1	
38	ZJ6004038	bolt M8×30	螺栓 M8×30		6	
39	ZJ6004039	springy cylinder pin 5×20	弹性圆柱销 5×20		9	
40	ZJ6004040	inside hexagon bolt M14×40	内六角螺钉 M14×40		3	
41	ZJ6004041	shaft coupling	联轴器		1	
42	ZJ6004042	Spring Washer 14	弹簧垫圈 14		3	
43	ZJ6004043	Coupling bolt	联轴器螺栓		3	
44	ZJ6004044	piston pump splined hub	柱塞泵花键套		1	
45	ZJ6004045	cover shell	罩壳		1	

尾罩总成

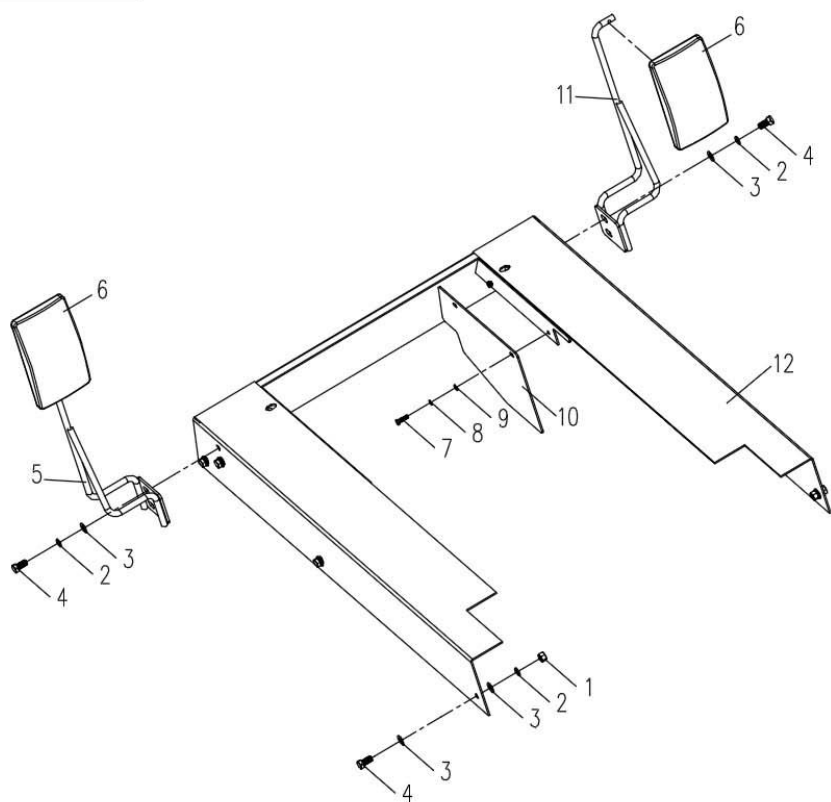
ZJ60





护罩总成

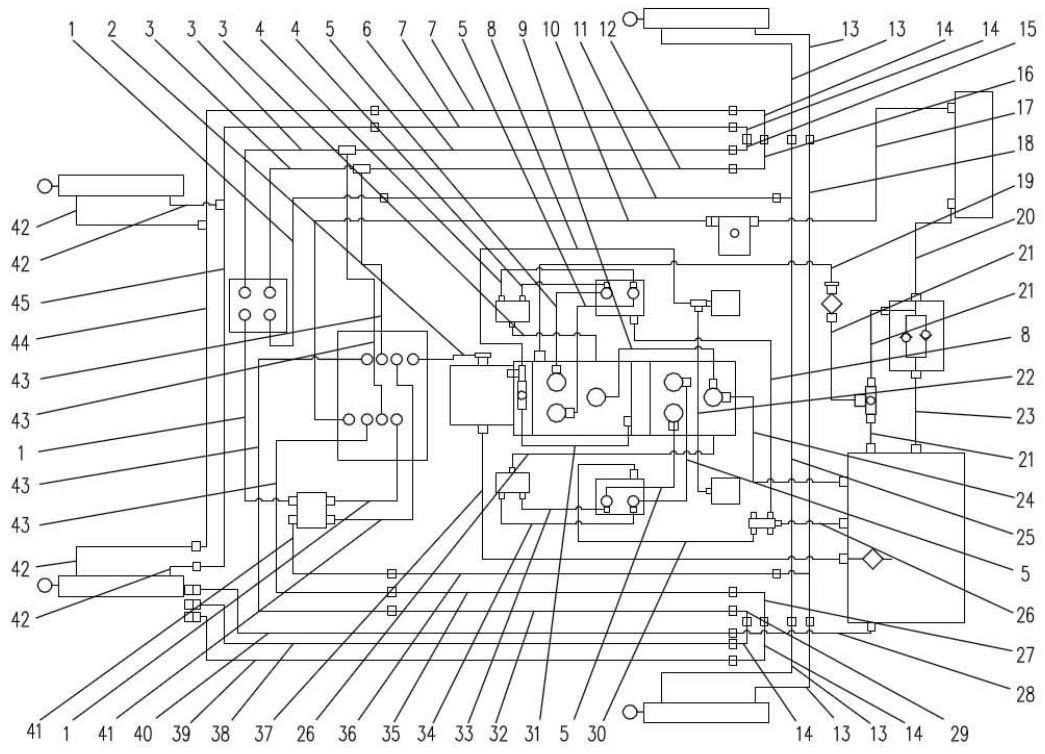
ZJ60





# 液压系统总成1

ZJ60



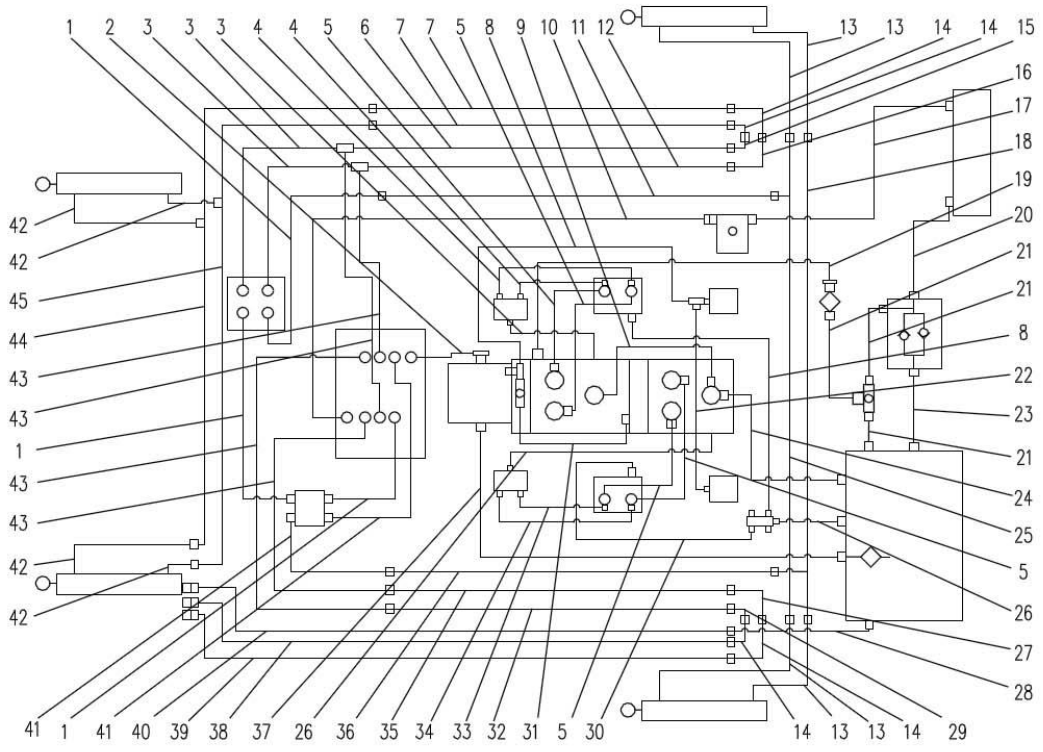


## Hydraulic system assembly 1

NO.	Part No.	Name		Company No.	Qty./set	Remark
		English	中文			
1	ZJ6007001	H type tube assembly	H 型软管总成		6	
2	ZJ6007002	H type tube assembly	H 型软管总成		1	
3	ZJ6007003	H type tube assembly	H 型软管总成		3	
4	ZJ6007004	H type tube assembly	H 型软管总成		2	
5	ZJ6007005	H type tube assembly	H 型软管总成		4	
6	ZJ6007006	oil pipe 3combination	油管 3 合件		1	
7	ZJ6007007	oil pipe 1combination	油管 1 合件		2	
8	ZJ6007008	H type tube assembly	H 型软管总成		2	
9	ZJ6007009	H type tube assembly	H 型软管总成		1	
10	ZJ6007010	H type tube assembly	H 型软管总成		1	
11	ZJ6007011	oil pipe 4combination	油管 4 合件		1	
12	ZJ6007012	oil pipe 5combination	油管 5 合件		1	
13	ZJ6007013	H type tube assembly	H 型软管总成		4	
14	ZJ6007014	H type tube assembly	H 型软管总成		4	
15	ZJ6007015	oil pipe 10combination	油管 10 合件		1	
16	ZJ6007016	oil pipe 11 combination	油管 11 合件		1	
17	ZJ6007017	H type tube assembly	H 型软管总成		1	
18	ZJ6007018	oil pipe 12 combination	油管 12 合件		1	
19	ZJ6007019	H type tube assembly	H 型软管总成		1	
20	ZJ6007020	H type tube assembly	H 型软管总成		1	
21	ZJ6007021	H type tube assembly	H 型软管总成		2	
22	ZJ6007022	H type tube assembly	H 型软管总成		1	
23	ZJ6007023	H type tube assembly	H 型软管总成		1	
24	ZJ6007024	H type tube assembly	H 型软管总成		1	
25	ZJ6007025	oil pipe 13 combination	油管 13 合件		1	

# 液压系统总成1

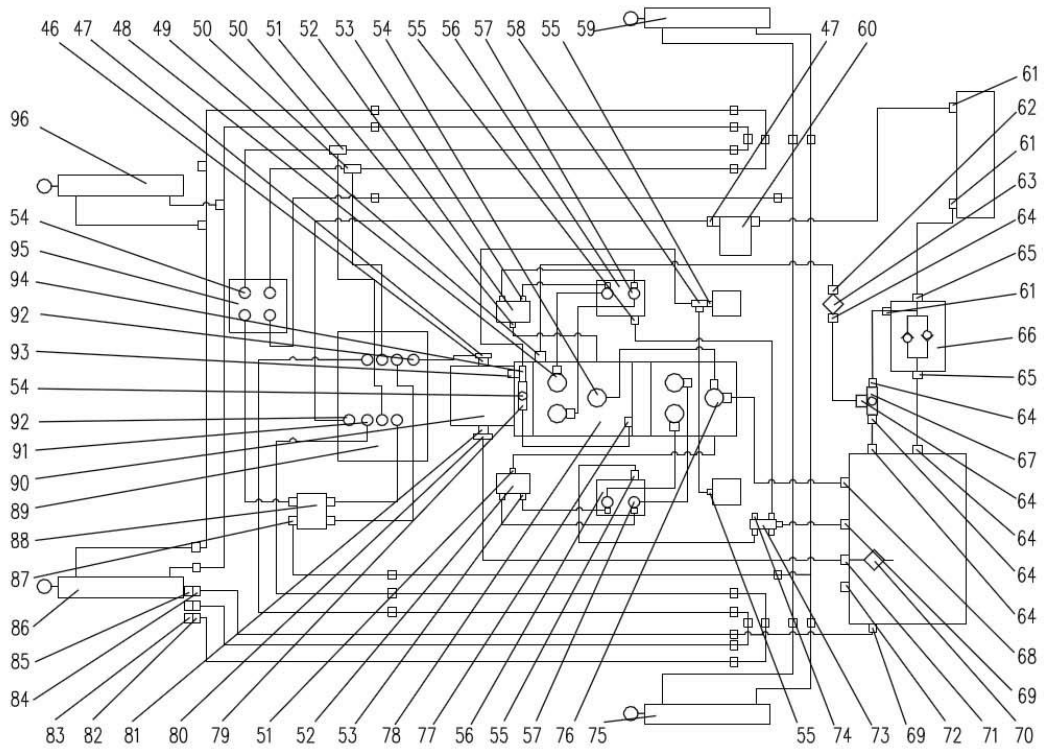
ZJ60



NO.	Part No.	Name		Company No.	Qty./set	Remark
		English	中文			
26	ZJ6007026	H type tube assembly	H 型软管总成		2	
27	ZJ6007027	oil pipe 6 combination	油管 6 合件		1	
28	ZJ6007028	H type tube assembly	H 型软管总成		1	
29	ZJ6007029	oil pipe 2 combination	油管 2 合件		1	
30	ZJ6007030	H type tube assembly	H 型软管总成		1	
31	ZJ6007031	H type tube assembly	H 型软管总成		1	
32	ZJ6007032	oil pipe 9combination	油管 9 合件		1	
33	ZJ6007033	H type tube assembly	H 型软管总成		1	
34	ZJ6007034	H type tube assembly	H 型软管总成		1	
35	ZJ6007035	oil pipe 8 combination	油管 8 合件		1	
36	ZJ6007036	oil pipe 7 combination	油管 7 合件		1	
37	ZJ6007037	H type tube assembly	H 型软管总成		1	
38	ZJ6007038	oil pipe 16 combination	油管 16 合件		1	
39	ZJ6007039	oil pipe 17 combination	油管 17 合件		1	
40	ZJ6007040	oil pipe 19 combination	油管 19 合件		1	
41	ZJ6007041	H type tube assembly	H 型软管总成		2	
42	ZJ6007042	H type tube assembly	H 型软管总成		4	
43	ZJ6007043	H type tube assembly	H 型软管总成		4	
44	ZJ6007044	oil pipe 14 combination	油管 14 合件		1	
45	ZJ6007045	oil pipe 15combination	油管 15 合件		1	

# 液压系统总成2

ZJ60

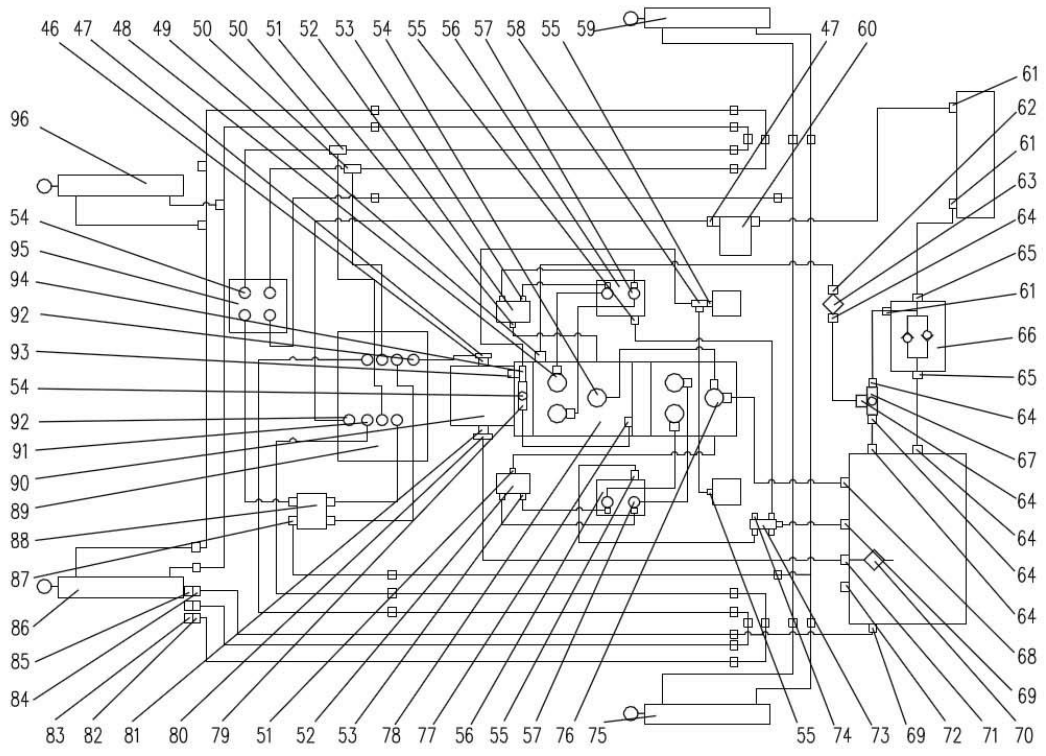


## Hydraulic system assembly 2

NO.	Part No.	Name		Company No.	Qty./set	Remark
		English	中文			
46	ZJ6007046	end straight-through joint	端直通接头		1	
47	ZJ6007047	right angle combination Connecting joint	直角组合连接接头		2	
48	ZJ6007048	end straight-through joint	端直通接头		4	
49	ZJ6007049	end straight-through joint	端直通接头		1	
50	ZJ6007050	direct three-way combination Connecting joint	直路三通组合连接接头		2	
51	ZJ6007051	Motor wash joint	马达冲洗接头体		2	
52	ZJ6007052	Hot oil shuttle valve	热油梭阀		2	
53	ZJ6007053	end straight-through joint	端直通接头		4	
54	ZJ6007054	end straight-through joint	端直通接头		9	
55	ZJ6007055	end straight-through joint	端直通接头		2	
56	ZJ6007056	hydraulic motor	液压马达		2	
57	ZJ6007057	Flushing valve seat assembly	冲洗阀座合件		4	
58	ZJ6007058	right angle combination Connecting joint	直路三通组合连接接头		1	
59	ZJ6007059	right arm frame cylinder	右臂架油缸		1	
60	ZJ6007060	Oil return four-way flow concentration block	回油四通汇流块		1	
61	ZJ6007061	end straight-through joint	端直通接头		2	
62	ZJ6007062	end straight-through joint	端直通接头		1	
63	ZJ6007063	Big rotary filter	大旋转滤油器		1	
64	ZJ6007064	end straight-through joint	端直通接头		6	
65	ZJ6007065	end straight-through joint	端直通接头		2	
66	ZJ6007066	Single combined valve	单项组合阀		1	
67	ZJ6007067	Three way changeover valve	三通转换阀		1	
68	ZJ6007068	end straight-through joint	端直通接头		1	
69	ZJ6007069	end straight-through joint	端直通接头		2	
70	ZJ6007070	Mesh type filter	网式滤油器		1	

# 液压系统总成2

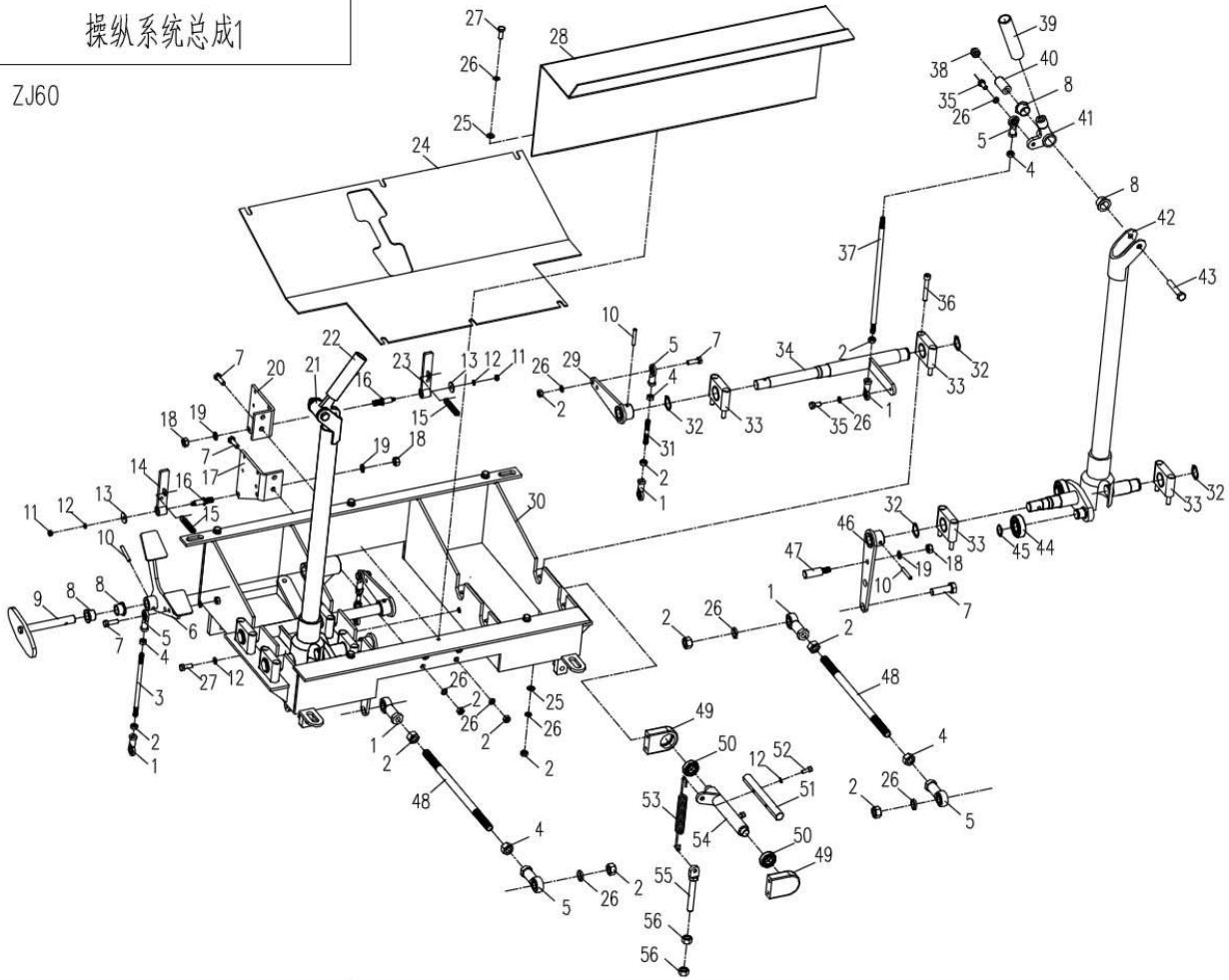
ZJ60



NO.	Part No.	Name		Company No.	Qty./set	Remark
		English	中文			
71	ZJ6007071	Connector for hydraulic oil filter element	液压油滤芯接头		1	
72	ZJ6007072	Oil Plug	油口堵头		1	
73	ZJ6007073	motor Oil return flow concentration block	马达回油汇流块		1	
74	ZJ6007074	Oil plug(with nut)	油口堵头(带螺母)		2	
75	ZJ6007075	left arm frame cylinder	左臂架油缸		1	
76	ZJ6007076	Triplet for oil-return of pump	泵回油三通		1	
77	ZJ6007077	Oil filling joint body	补油接头体			
78	ZJ6007078	Double plunger pump	双联柱塞泵		1	
79	ZJ6007079	Oil filling triplet of pump	泵补油三通		1	
80	ZJ6007080	right angle combination Connecting joint	直角组合连接接头		4	
81	ZJ6007081	end straight-through joint	端直通接头		1	
82	ZJ6007082	1/2 quick change coupler seat	1/2 快换接头座		2	
83	ZJ6007083	quick change coupler	快换接头		1	
84	ZJ6007084	3/8 quick change coupler seat	3/8 快换接头座		1	
85	ZJ6007085	quick change coupler	快换接头		1 对	
86	ZJ6007086	left dump cylinder	左翻斗油缸		1	
87	ZJ6007087	end straight-through joint	端直通接头		4	
88	ZJ6007088	Balancing valve	平衡阀		2	
89	ZJ6007089	Manual multi-way valve	手动多路阀		1	
90	ZJ6007090	Gear pump	齿轮泵		1	
91	ZJ6007091	end straight-through joint	端直通接头		6	
92	ZJ6007092	end straight-through joint	端直通接头		2	
93	ZJ6007093	Pressure joint	测压接头		2	
94	ZJ6007094	direct three-way combination Connecting joint	直路三通组合连接接头		1	
95	ZJ6007095	Adjusting valve (sauer )	调平阀 (萨奥)		1	
96	ZJ6007096	Right dump cylinder	右翻斗油缸		1	

操纵系统总成1

ZJ60



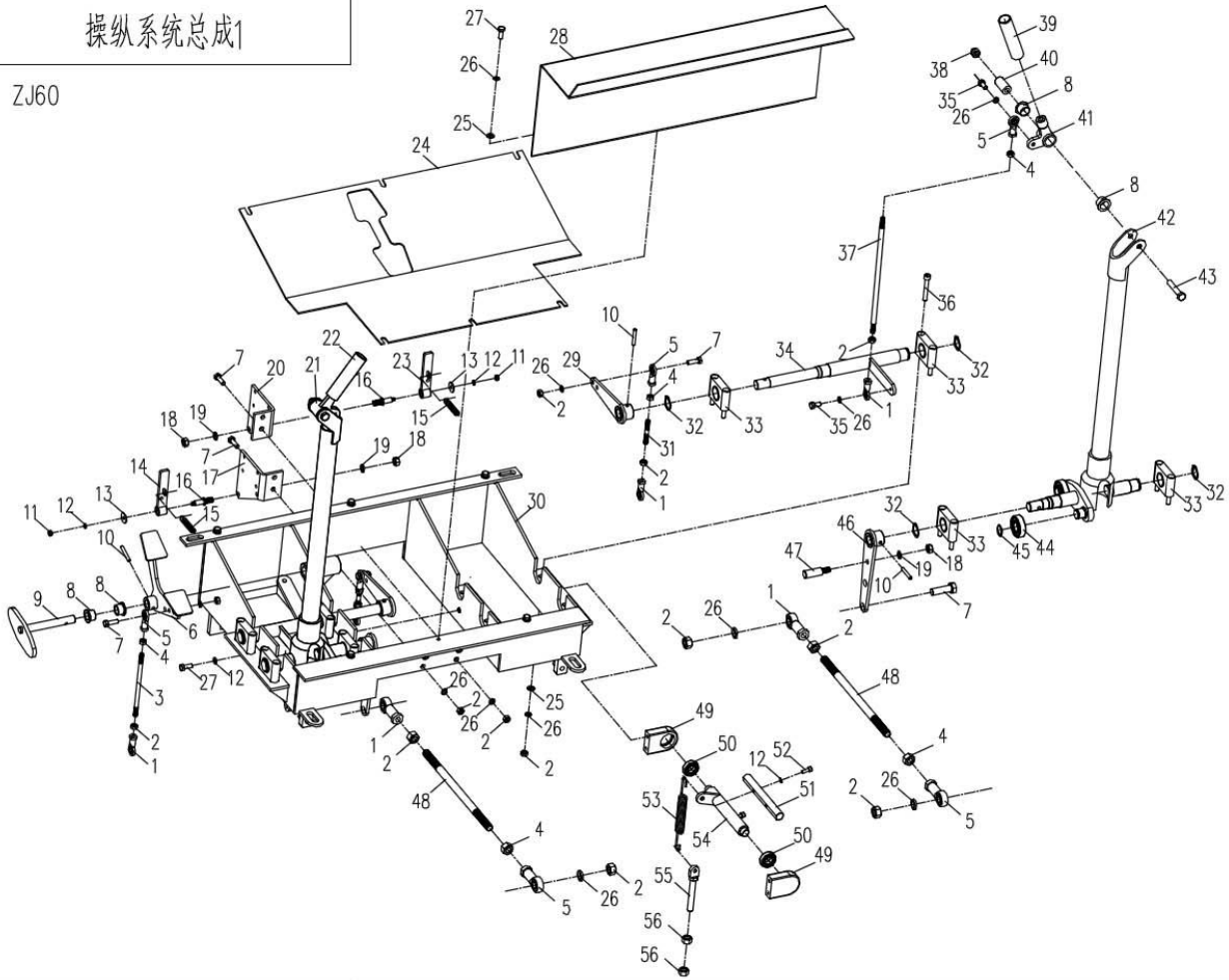


## Operation system

NO.	Part No.	Name		Company No.	Qty./set	Remark
		English	中文			
1	ZJ6008001	right joint bearing	右关节轴承		9	
2	ZJ6008002	nut M8	螺母 M8		36	
3	ZJ6008003	screw rod	螺杆		1	
4	ZJ6008004	left rotate nut M8	左旋螺母 M8		5	
5	ZJ6008005	left joint bearing	左关节轴承		5	
6	ZJ6008006	pedal support combination	踏板支撑合件		1	
7	ZJ6008007	bolt M8×25	螺栓 M8×25		11	
8	ZJ6008008	hinge bush	铰接套		2	
9	ZJ6008009	spacing board combination	限位板合件		1	
10	ZJ6008010	6X40 taper bolt	6X40 锥销		5	
11	ZJ6008011	nut M6	螺母 M6		2	
12	ZJ6008012	Spring Washer 6	弹簧垫圈 6		6	
13	ZJ6008013	flat Washer 6	平垫圈 6		2	
14	ZJ6008014	Stroke switch striker plate combination 1	行程开关碰板合件 1		1	
15	ZJ6008015	pull spring	拉簧		2	
16	ZJ6008016	rotate pin	转销		2	
17	ZJ6008017	Stroke switch fixed board 2	行程开关固定板 2		1	
18	ZJ6008018	nut M10	螺母 M10		8	
19	ZJ6008019	Spring Washer 10	弹簧垫圈 10		4	
20	ZJ6008020	Stroke switch fixed board 1	行程开关固定板 1		1	
21	ZJ6008021	left Handle weldment	左手柄焊合件		1	
22	ZJ6008022	left operating handle	左操作把		1	
23	ZJ6008023	Stroke switch striker plate combination 2	行程开关碰板合件 2		1	
24	ZJ6008024	Pedal	脚踏底板		1	
25	ZJ6008025	flat Washer 8	平垫圈 8		6	

操纵系统总成1

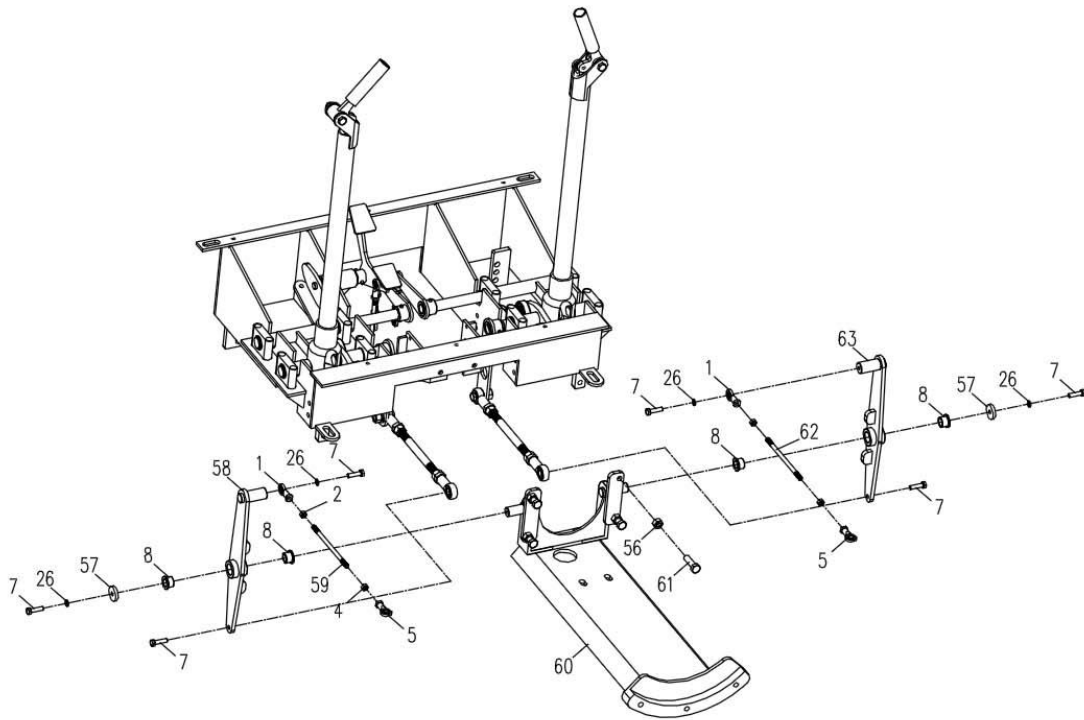
ZJ60



NO.	Part No.	Name		Company No.	Qty./set	Remark
		English	中文			
26	ZJ6008026	Spring Washer 8	弹簧垫圈 8		37	
27	ZJ6008027	bolt M8×16	螺栓 M8×16		8	
28	ZJ6008028	operation desk weldment	操作台焊合件		1	
29	ZJ6008029	Rocker weldment	摇臂焊合件		2	
30	ZJ6008030	operation system weldment	操纵系统焊合件		1	
31	ZJ6008031	screw rod	螺杆		2	
32	ZJ6008032	Shaft closing ring 25	轴用挡圈 25		8	
33	ZJ6008033	plastic bearing	塑料轴承		8	
34	ZJ6008034	rocker shaft weldment	摇臂轴焊合件		2	
35	ZJ6008035	joint bearing press pin	关节轴承压销		4	
36	ZJ6008036	bolt M8×60	螺栓 M8×60		16	
37	ZJ6008037	Handle pull rod	手柄拉杆		2	
38	ZJ6008038	Cap nut M10	盖型螺母 M10		2	
39	ZJ6008039	Right operating handle	右操作把		1	
40	ZJ6008040	Handle revolving shaft	手柄转轴		2	
41	ZJ6008041	right Handle weldment	右手柄焊合件		1	
42	ZJ6008042	Handle shell weldment	手柄壳焊合件		2	
43	ZJ6008043	bolt M10×55	螺栓 M10×55		2	
44	ZJ6008044	Bearing 6204	轴承 6204		4	
45	ZJ6008045	Retainer ring 20	轴用挡圈 20		4	
46	ZJ6008046	Rod connecting arm weldment	拉杆连接臂焊合件		2	
47	ZJ6008047	pin	碰销		2	
48	ZJ6008048	pull rod	拉杆		2	
49	ZJ6008049	Location-limited seat	限位支座		4	
50	ZJ6008050	Bearing 6003	轴承 6003		4	
51	ZJ6008051	Swinging limiting shaft	摆动限位轴		2	
52	ZJ6008052	Hexagon socket screw M6×16	内六角螺栓 M6×16		4	
53	ZJ6008053	Tension spring	拉簧		2	
54	ZJ6008054	Swinging limit revolving shaft assembly	摆动限位转轴合件		1 对	
55	ZJ6008055	Gas spring pulling plate assembly	气弹簧拉板合件		2	
56	ZJ6008056	nut M12	螺母 M12		6	

操纵系统总成2

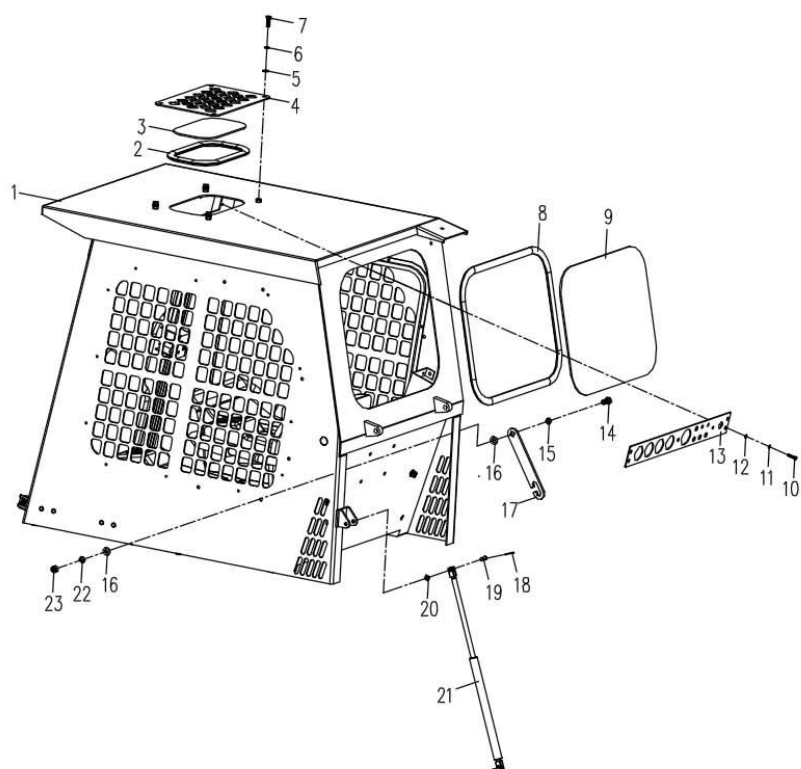
ZJ60





驾驶室总成1

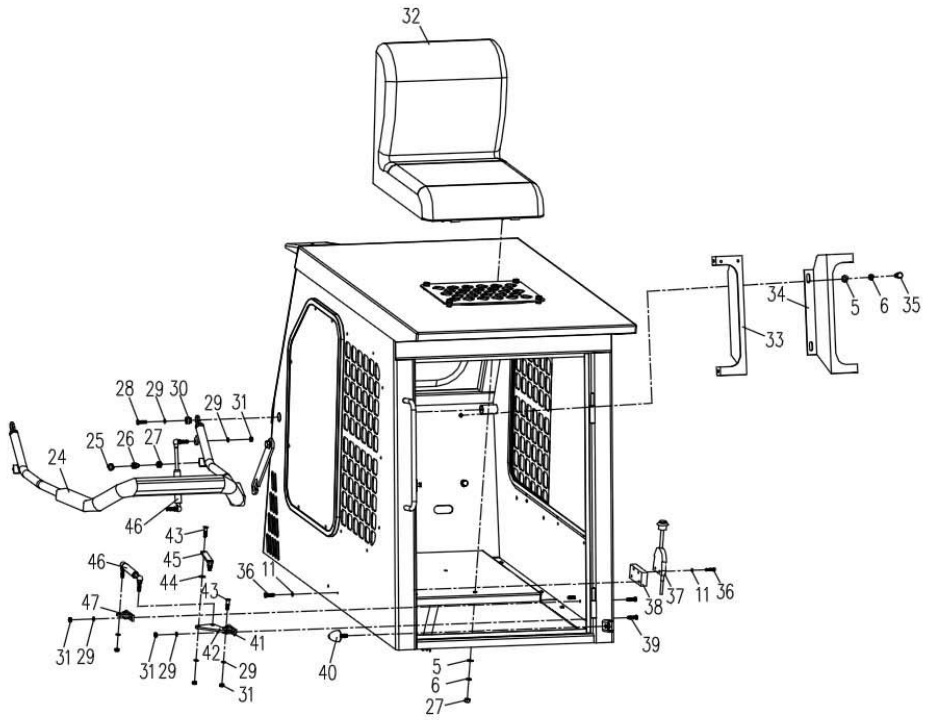
ZJ60





驾驶室总成2

ZJ60

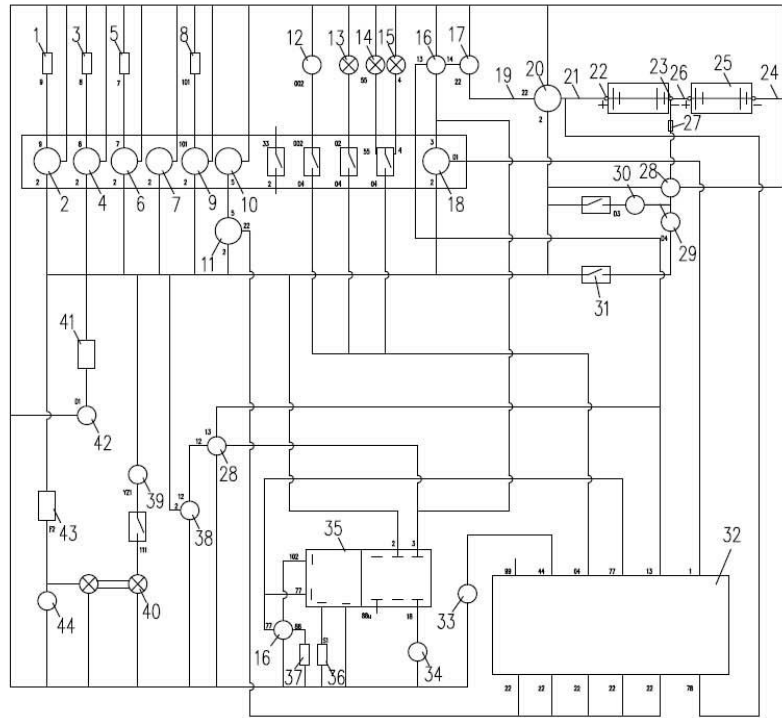




## Cab assembly 2

NO.	Part No.	Name		Company No.	Qty./set	Remark
		English	中文			
24	ZJ6009030	bumper combination	保险杠合件		1	
25	ZJ6009031	shock absorption sheath	减震套		2	
26	ZJ6009032	bolt M10×50	螺栓 M10×50		2	
27	ZJ6009033	nut M10	螺母 M10		1	
28	ZJ6009034	bolt M8×40	螺栓 M8×40		2	
29	ZJ6009035	Spring Washer 8	弹簧垫圈 8		18	
30	ZJ6009036	Bush	定位套		2	
31	ZJ6009037	nut M8	螺母 M8		11	
32	ZJ6009038	chair	座椅		1	
33	ZJ6009039	right bracket	右支架		1	
34	ZJ6009040	left bracket	左支架		1	
35	ZJ6009041	bolt M10×20	螺栓 M10×20		4	
36	ZJ6009050	bolt M6×20	螺栓 M6×20		2	
37	ZJ6009051	Hand-Foot accelerograph	手脚油门		1	
38	ZJ6009052	Hand accelerograph cushion block	手油门垫板		1	
39	ZJ6009053	bolt M8×25	螺栓 M8×25		4	
40	ZJ6009054	shock absorption ball	减震球		1	
41	ZJ6009055	small hinge seat	小铰接座		1	
42	ZJ6009056	rocker arm Plate	摇臂板		1	
43	ZJ6009057	Pin 2	销 2		3	
44	ZJ6009058	Washer 8	垫圈 8		1	
45	ZJ6009059	Connecting rod Plate	连杆板		1	
46	ZJ6009060	gas Spring	气弹簧		2	
47	ZJ6009061	gas Spring pedestal	气弹簧支座		1	

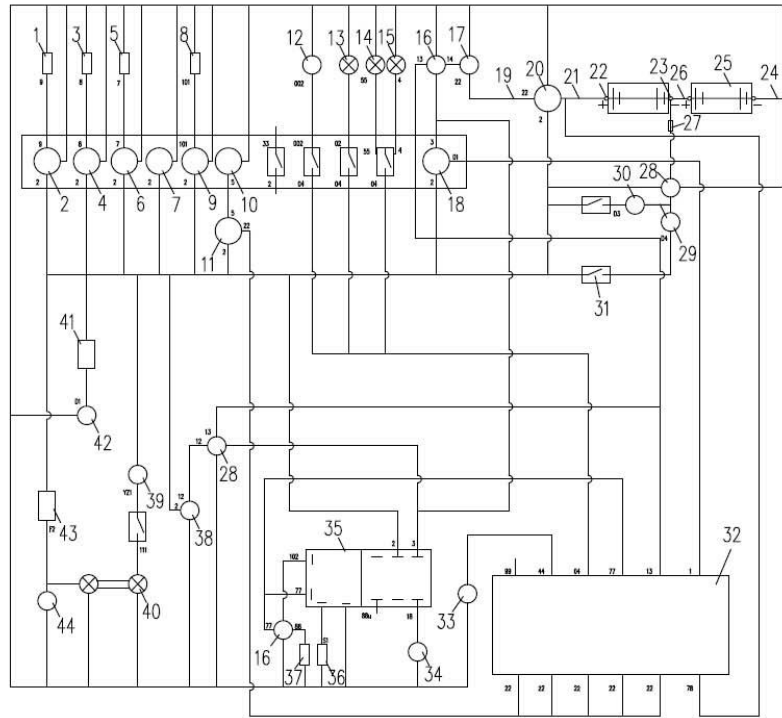
ZJ系列工程机电器原理图



## Electric system

NO.	Part No.	Name		Company No.	Qty./set	Remark
		English	中文			
1	ZJ6010001	water temperature sensor	水温传感器		2	
2	ZJ6010002	water temperature gauge	水温表		1	
3	ZJ6010003	hydraulic oil temperature sensor	液压油温传感器		1	
4	ZJ6010004	hydraulic oil temperature gauge	液压油温度表		1	
5	ZJ6010005	fuel amount sensor	燃油量传感器		1	
6	ZJ6010006	fuel amount gauge	燃油油量表		1	
7	ZJ6010007	charge instruction sheet	充电指示表		1	
8	ZJ6010008	oil manometer sensor	机油压力传感器		1	
9	ZJ6010009	oil manometer	机油压力表		1	
10	ZJ6010010	hour meter	计时表		1	
11	ZJ6010011	generator	发电机		1	
12	ZJ6010012	heater	暖风机		1	
13	ZJ6010013	Alarm lamp	警灯		1	
14	ZJ6010014	front head lamp	前照明灯		2	
15	ZJ6010015	Rear head lamp	后照明灯		1	
16	ZJ6010016	AC contactor	直流接触器		2	
17	ZJ6010017	Starter	起动机		1	
18	ZJ6010018	Starter switch	启动开关		1	
19	ZJ6010019	battery wire 1700	电瓶线 1700		1	
20	ZJ6010020	Electromagnetic power switch	电磁式电源开关		1	
21	ZJ6010021	battery wire 1000	电瓶线 1000			
22	ZJ6010022	battery clip	电瓶卡+		2	
23	ZJ6010023	battery clip	电瓶卡-		2	
24	ZJ6010024	battery wire 400	电瓶线 400		1	
25	ZJ6010025	battery	蓄电池		2	

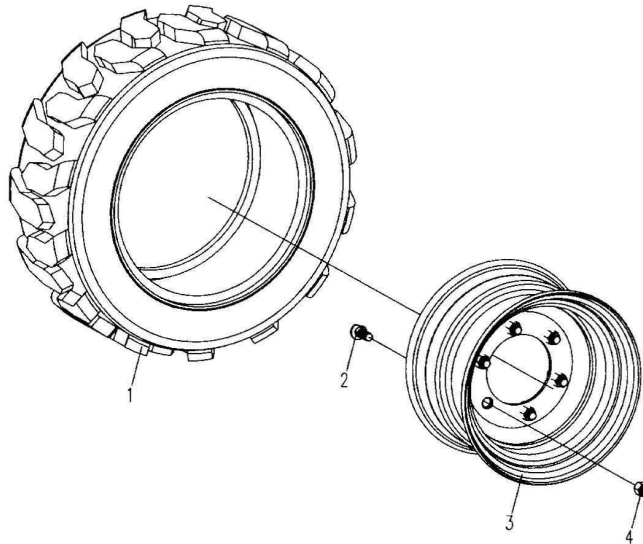
ZJ系列工程机电器原理图



NO.	Part No.	Name		Company No.	Qty./set	Remark
		English	中文			
26	ZJ6010026	battery wire 750	电瓶线 750		1	
27	ZJ6010027	fuse	保险丝		1	
28	ZJ6010028	DC relay	直流继电器		2	
29	ZJ6010029	big arm float electromagnet	大臂浮动电磁铁		1	
30	ZJ6010030	big flux electromagnet	大流量电磁铁		1	
31	ZJ6010031	rocker switch	翘板开关		7	
32	ZJ6010032	Insurance box	保险盒		1	
33	ZJ6010033	Wiper generator	雨刷电机		1	
34	ZJ6010034	warm-up oil supply solenoid valve	预热供油电磁阀		1	
35	ZJ6010035	flame warm-up control case	火焰预热控制盒		1	
36	ZJ6010036	water temperature sensor	水温传感器		1	火焰预热用 (Using in Warming-up )
37	ZJ6010037	Flame injector	火焰喷射器		1	
38	ZJ6010038	Fuel stop valve	断油电磁阀		1	
39	ZJ6010039	Flash relay	闪光继电器		1	
40	ZJ6010040	Foursquare lamp	四角灯		1	
41	ZJ6010041	Stroke switch	行程开关		1	
42	ZJ6010042	Hydraulic oil solenoid valve	液控油电磁阀		1	
43	ZJ6010043	Press switch	压力开关		1	
44	ZJ6010044	reverse buzzer	倒车蜂鸣器		1	

轮胎总成

ZJ60



**Tire assembly**

NO.	Part No.	Name		Company No.	Qty./set	Remark
		English	中文			
1	ZJ6011001	Tire	外轮胎		4	
2	ZJ6011002	Rim	轮辋		4	
3	ZJ6011003	Tire bolt	轮胎螺栓		24	
4	ZJ6011004	Ball nut	球面螺母		24	

