

X18 MINI CRAWLER EXCAVATOR

OPERATION & MAINTENANCE MANUAL



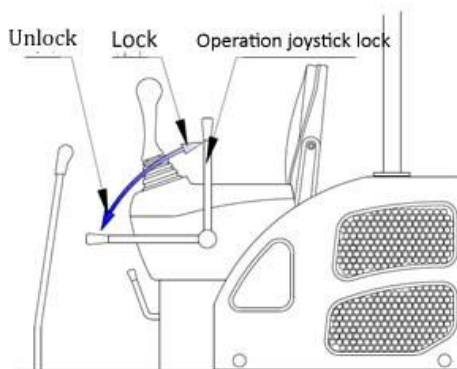
MAXDUTY IMPORTS PTY LTD

●Operation joystick lock

This device is to lock/unlock operation joystick. Please operate exactly according to instruction label on machine.

Note

- 1.This device could not lock traveling joystick and extra line foot valve. They still work when the lock joystick is pulled up.
- 2.When the lock joystick is pulled up, you cannot operate the working device (working device includes boom, arm and bucket).
- 3.Please fully pull up the lock joystick before you are on or off the machine. Please lower the bucket down to ground and shut down the engine before you left.



Caution

Before you pull over or left machine , please do lower the bucket down to ground and pull up the lock joystick, otherwise it is dangerous if the working device falling down. Please make sure the lock joystick is at locked position, shut down the engine and pull out the keys.

Operation joystick instruction

Left working device joystick

Left traveling joystick

Right traveling joystick

Right working device joystick



Accelerator knob

Flame out line

Dozer blade joystick



Operation joystick lock

swing/boom deflection switch joystick

extra line foot valve

●Accelerator knob

- 1、 Twist the knob clockwise to increase engine rotate speed.
- 2、 When you shut down engine, twist the knob anticlockwise to the bottom slowly, decrease engine rotate speed gradually, DO NOT press the button on top and push knob down to bottom hardly to avoid knob failure.

3、 ●Flame out line

Pull up the flame out line to flame out the accelerator.

●Traveling joystick



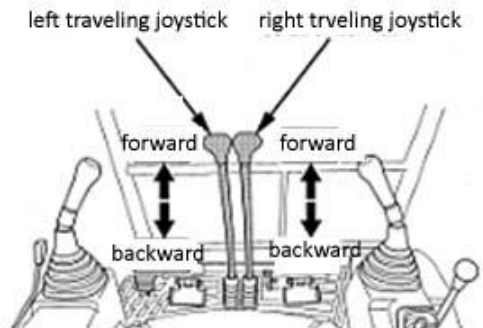
Caution

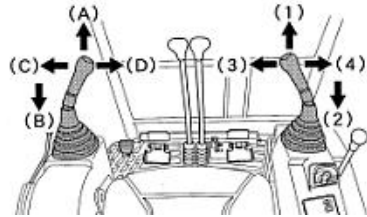
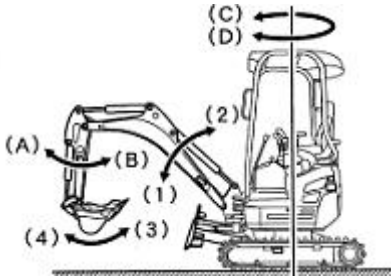
If you move dozer blade on behind and operate the traveling joystick, machine will travel to the opposite direction of your operation. Thus, please confirm the direction of dozer blade before you travel the machine. Failure on confirmation may make the machine travel to opposite direction and cause injury or accident.

When the dozer blade is on front, push traveling joystick forward will make machine travel forward, pull traveling joystick backward will make machine travel backward.

●operation joystick

operation joystick is to operate boom, arm, bucket, machine swing or boom deflection.





Operation direction	Left operation joystick
A	Arm stretch out
B	Arm withdraw
C	Swing to left/boom deflect to left
D	Swing to right/boom deflect to right

Operation direction	Right operation joystick
1	Boom down
2	Boom up
3	Bucket dig
4	Bucket dump



Caution

Please do not swing or deflection machine on slant road, otherwise there might be danger of turnover. If you have to do this on slant road, please make your machine' s position flat then proceed.

Note

- 1、 The machine is using hydraulic pilot system, so work device could be operated only when engine is running. If you need bucket touch the ground, please switch engine to low speed then proceed.
- 2、 Before you go on or off the machine, please pull up the lock

joystick and make sure it's in lock position

3、 If hydraulic oil's temperature is low, the responsiveness of working device joystick will be slow, so please warm up the machine before work.

4.Please following below procedures before dismounting hydraulic attachments:

(1)Lower engine rotate speed, lay down the bucket on the ground ;

(2)Shut down the engine, move both sides working device joysticks to all directions;

(3)Wait at least 10 minutes to release pressure in hydraulic circuit.

Do not ignore any above procedure to avoid dangerous.

6、 Do not come close to the machine before working device touch the ground.

Important

1、 Boom operation

Please avoid bucket tooth hooking on dozer blade when boom going down.

2、 Arm operation

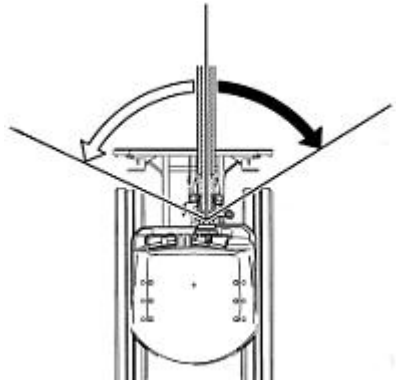
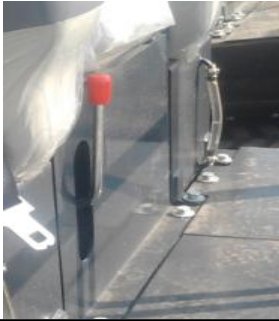
When stretch out the arm, if the arm is vertical to the ground there might be momentary movement pause, this is not malfunction please do not worry about that.

3、 Fast swing or deflection will short machine service life, please don't operate like that.

●**Swing/boom deflection switch joystick**

It is for switching between upper platform swing and boom deflection.

Push down the switch joystick to position, if you move left operation joystick the boom should deflect to left or right. Pull up the joystick and the machine is in swing model, if you move left operation joystick the upper platform will swing.



◀ Swing ↔ Boom deflection

Caution



When work with boom deflection, keep people or barrier from boom deflection range to avoid injury.

•Dozer blade joystick

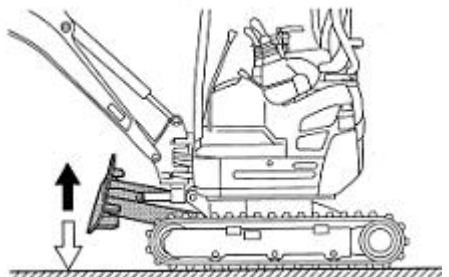
To lift or lower dozer blade

Push the joystick forward to lower dozer blade, pull the joystick backward to lift dozer blade.

When you are dozing, please operate two traveling joystick with you left hand and operate dozer blade with your right hand.



Lower
↕
Lift



●extra line foot valve

To operate hydraulic breaker or other attachments. After hydraulic breaker is connected to the machine, raise upper pad to front, and step on right side of foot valve to proceed breaking. When using other attachments, step on left side of foot valve and hydraulic oil will flow to left side of arm, step on right side of foot valve and hydraulic oil will flow to right side of arm



●Safety belt

Caution



Please fasten your safety belt before you operate the machine, please adjust the seat to best position and buckle up the safety belt.



●Seat adjustment

The seat is with slide to forward and backward

1、 Pull joystick to right side to move seat forward or backward, adjust the seat to the position that easy to operate and confirm the seat is fixed well.

2、 Before you put down the



Pull joystick to right side to move seat forward or backwa

seat forward, please put operation joystick lock to “lock” position, shut down the engine then proceed



Work lamp/front lamp switch

Horn switch

Starter

Gauge

●Starter

To start the engine, insert key into starter, turn the key anticlockwise to first gear, all electrical circuits are opening and machine is preheated. Turn the key anticlockwise to next gear the engine is started. Please remove your hand off the key after engine is started.

Important

If the key is attached with metal key chain, it will hinder the signal transmission between key and switch to cause engine start failure.

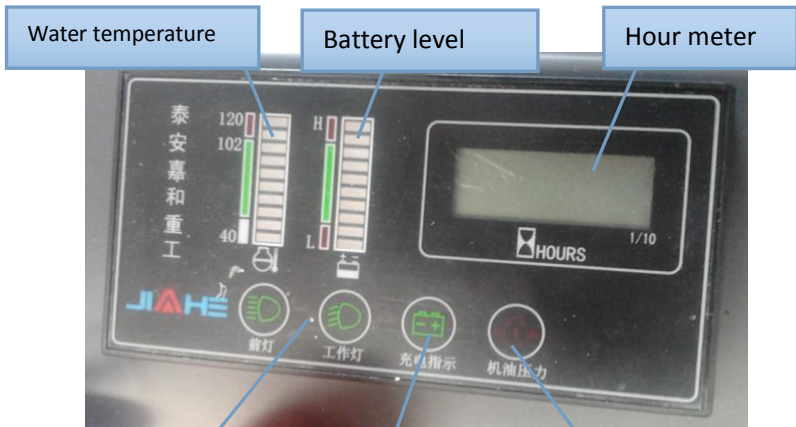
●**Horn**

When the key is on running position, press the horn switch and the horn will ring.

●**Work lamp/front lamp switch**

When the key is on running position, press the work lamp/front lamp switch, the work lamp/front lamp will be turned on.

●**Gauge**



Work lamp/front lamp

Charging indication

Engine oil pressure

◆**Charging indication**

When charging system failure occur during engine running, the charging indication light will be turned on. When engine is stopped, put the key to running position the light will be turned on, and will go off after engine is started.

◆**Engine oil pressure**

When lubricating system failure occur during engine running, the engine oil pressure indication light will be turned on. When engine

is stopped, put the key to running position the light will be turned on, and will go off after engine is started. If the light is still on after engine is started, please stop engine and check engine oil level.

◆Hour meter

Indicate machine's accumulate running hours.

Hour meter's count method: the number will increase 1 every one hour, this is electrical hour meter, so as long as the key is on running position, the meter still counts even the engine is stopped.

Note

Sometimes there might be fog inside hour meter, this is not failure and the fog will disappear after steam evaporation

◆Water temperature

When water temperature in cooling system reach to 102°C during engine running, water temperature indication light will be turned on for warning. put the key to running position the light will be turned on, when engine is running it will display water temperature

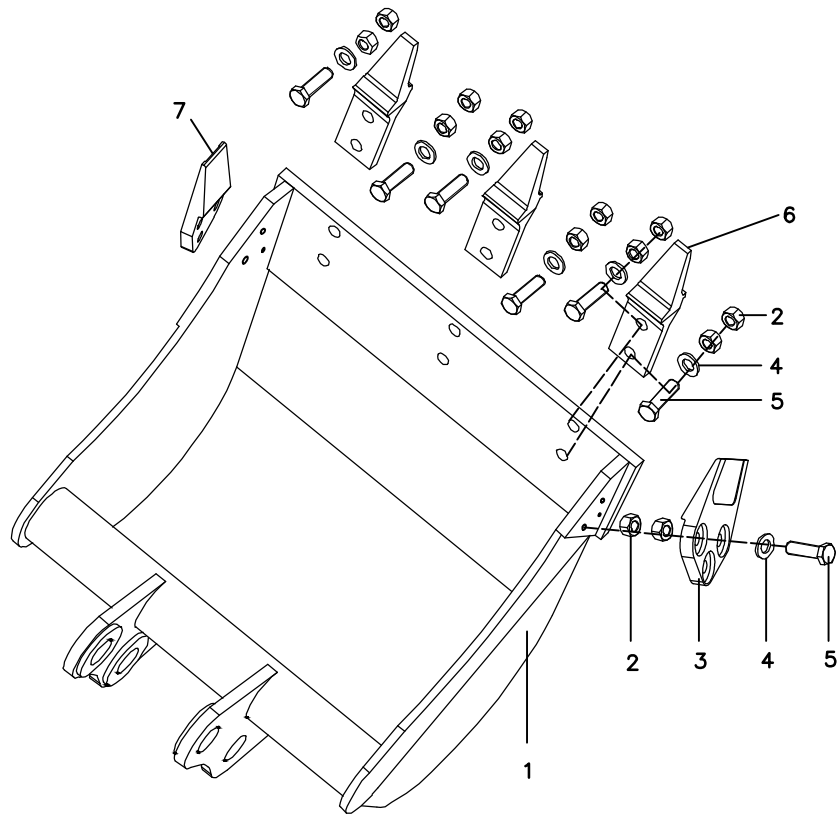
◆Battery indication

Battery indication light will be turned on after battery charging is finished. Put the key to running position the light will be turned on

◆Work lamp/front lamp indication

Put the key to running position and press work lamp/front lamp switch, the indication light will be turned on.

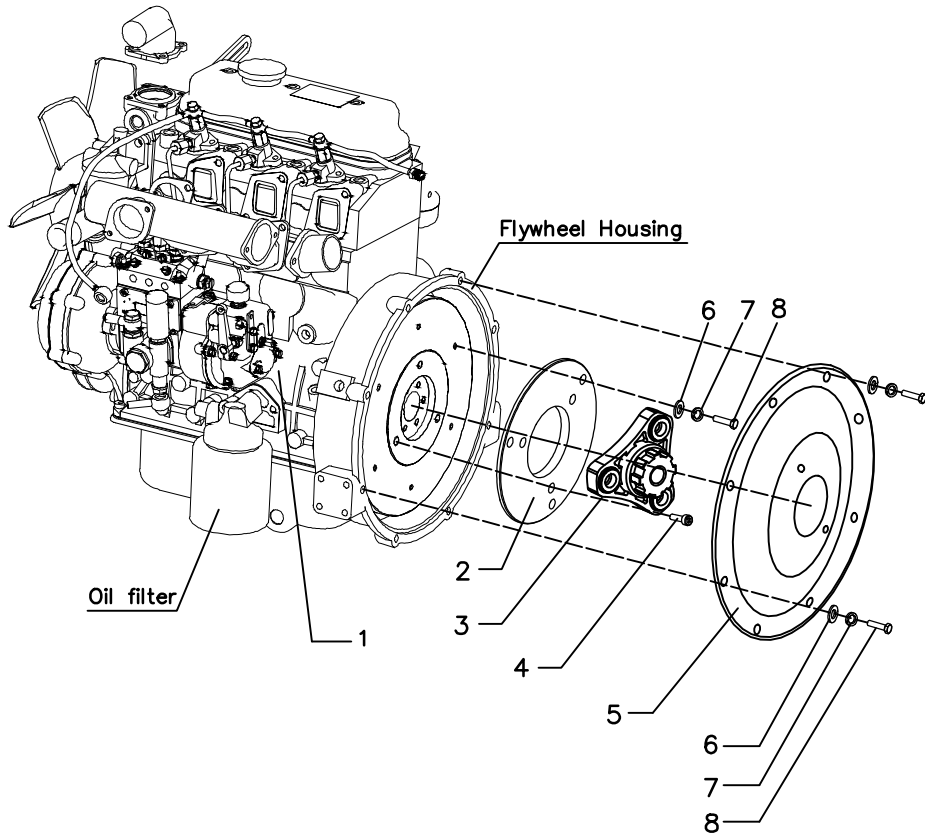
Work Equipment



Work Equipment

Index	Part No.	Description	Quantity	Remarks
1	1805100	Bucket	1	
2	6170M12	Nut	12	
3	1805210	Cutter	2	
4	GB9712	Washer	12	
5	M12X45	Bolt	12	
6	1805230	Tooth	3	
7	1805220	Cutter	1	

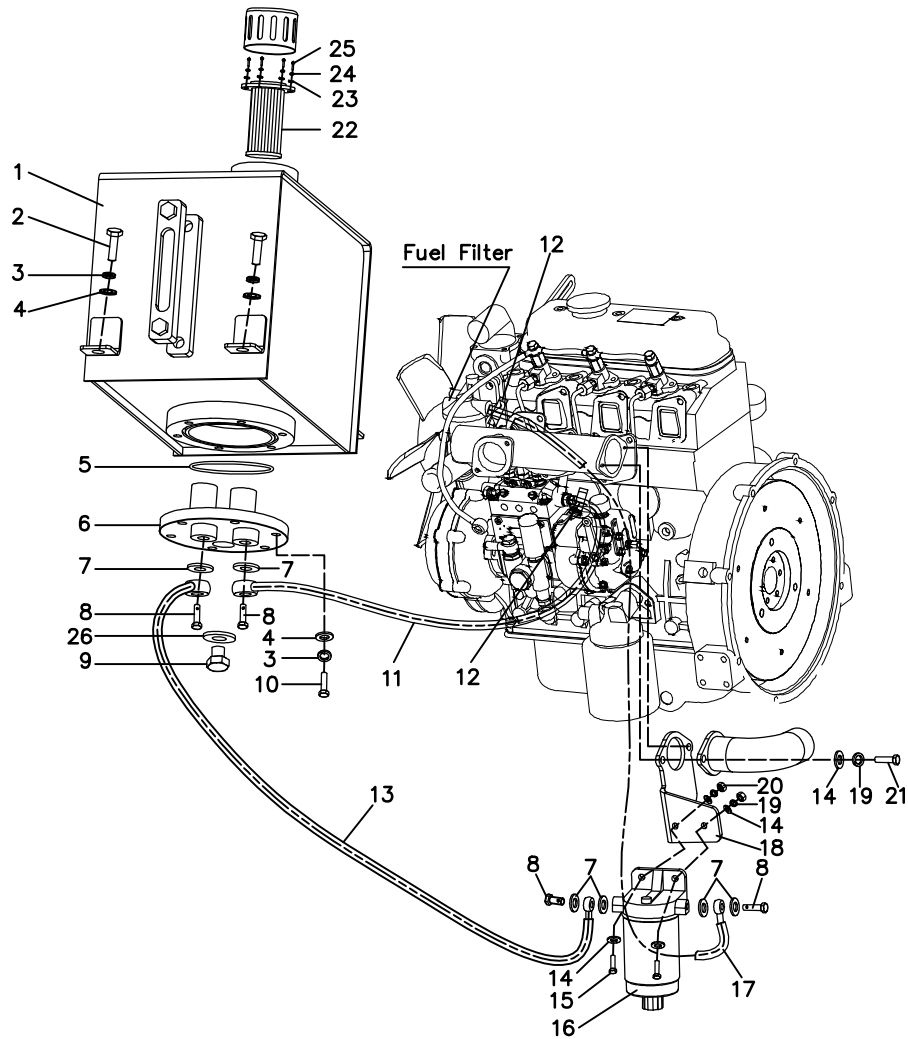
Power Take Off



Power Take Off

Index	Part No.	Description	Quantity	Remarks
1	1812100	Diesel Engine	1	
2	1812210	Flange	4	
3	1812220	Coupling	2	
4	M10X25	Screw	3	
5	1812230	Flange	2	
6	GB9712	Washer	11	
7	GB9312	Washer Spring	11	
8	M12X30	Bolt	11	

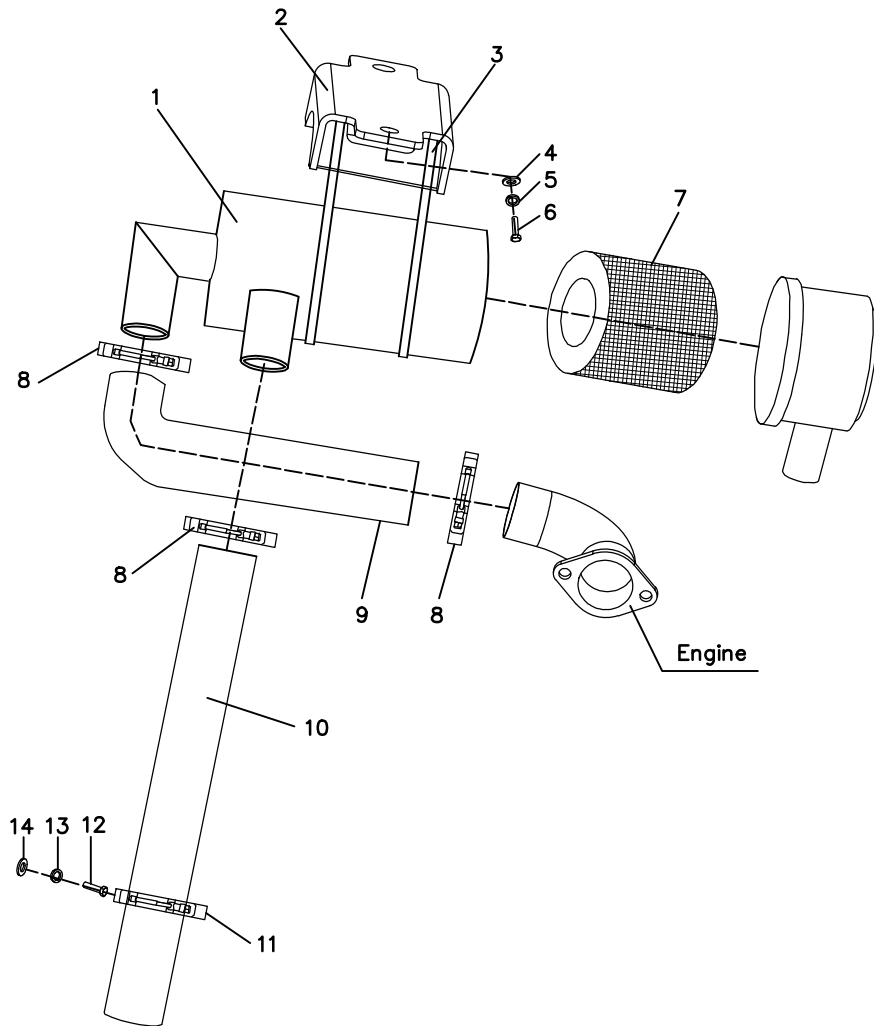
Fuel System



Fuel System

Index	Part No.	Description	Quantity	Remarks
1	1802510	Fuel Tank	1	
2	M10X25	Bolt	4	
3	GB9310	Washer Spring	10	
4	GB9710	Washer	10	
5	120X3.5	O-Ring	1	
6	1802520	Flange	1	
7	1812601	Gasket	6	
8	1812602	Bolt	4	
9	M27X2	Plug	1	
10	M10X30	Bolt	6	
11	1812620	Hose Assembly	1	
12	1812603	Clip	2	
13	1812630	Hose Assembly	1	
14	GB9708	Washer	6	
15	M8X30	Bolt	2	
16	1812650	Fuel Filter	1	
17	1812640	Hose Assembly	1	
18	1812610	Bracket	1	
19	GB9308	Washer Spring	4	
20	6170M8	Nut	2	
21	M8X25	Bolt	2	
22	1802540	Hydraulic Air Filter	1	
23	GB9705	Washer	6	
24	GB9305	Washer Spring	6	
25	M5X15	Screw	6	
26	1812604	Gasket	1	

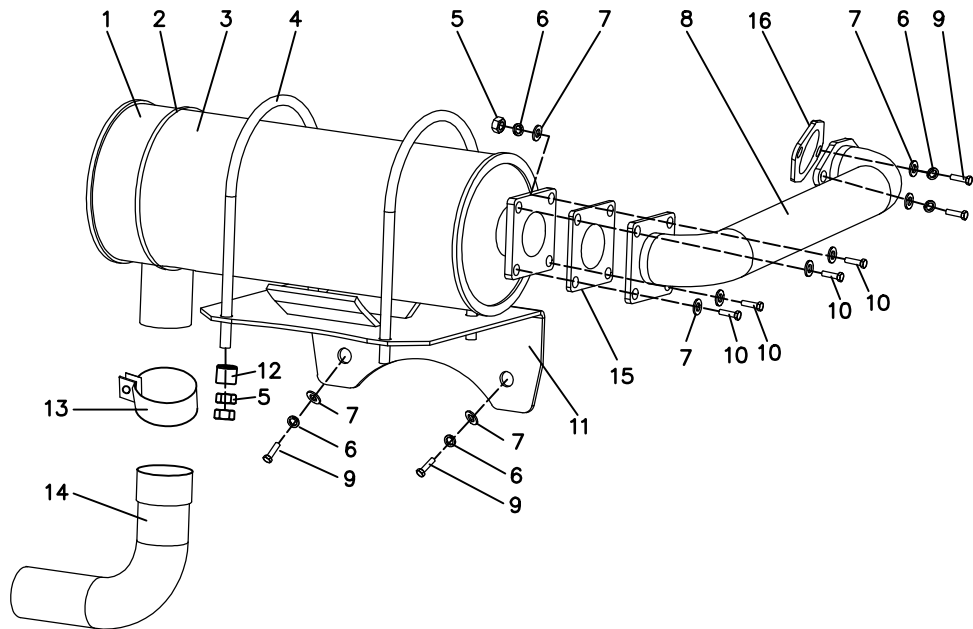
Air System



Air System

Index	Part No.	Description	Quantity	Remarks
1	1812310	Air Cleaner	1	
2	1812320	Support	1	
3	1812304	Clamp	2	
4	GB9712	Washer	2	
5	GB9312	Washer Spring	2	
6	M10X20	Bolt	2	
7	1812311	Air Filter	1	
8	1812305	Clamp	3	
9	1812302	Hose	1	
10	1812301	Hose	1	
11	1812306	Clamp	1	
12	GB9708	Washer	1	
13	GB9308	Washer Spring	1	
14	M8X20	Bolt	1	

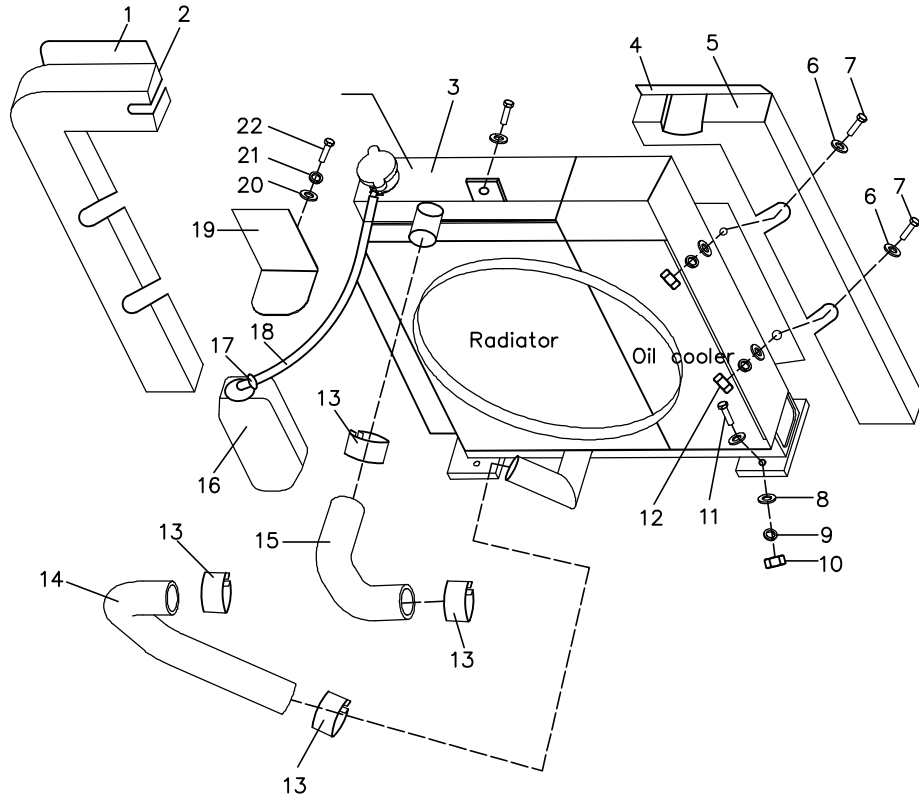
Exhaust



Exhaust

Index	Part No.	Description	Quantity	Remarks
1	1812420	Muffler	1	
2	1812408	Clamp	2	
3	1812407	Asbestos Insulation	1	
4	1812401	Bolt	2	
5	6170M10	Nut	12	
6	GB9310	Washer Spring	9	
7	GB9710	Washer	13	
8	1812430	Adapter	1	
9	M10X25	Bolt	5	
10	M10X35	Bolt	4	
11	1812410	Bracket	1	
12	1812402	Flange	4	
13	1812422	Clamp	1	
14	1812421	Pipe	1	
15	1812403	Gasket	1	
16	1812404	Gasket	1	

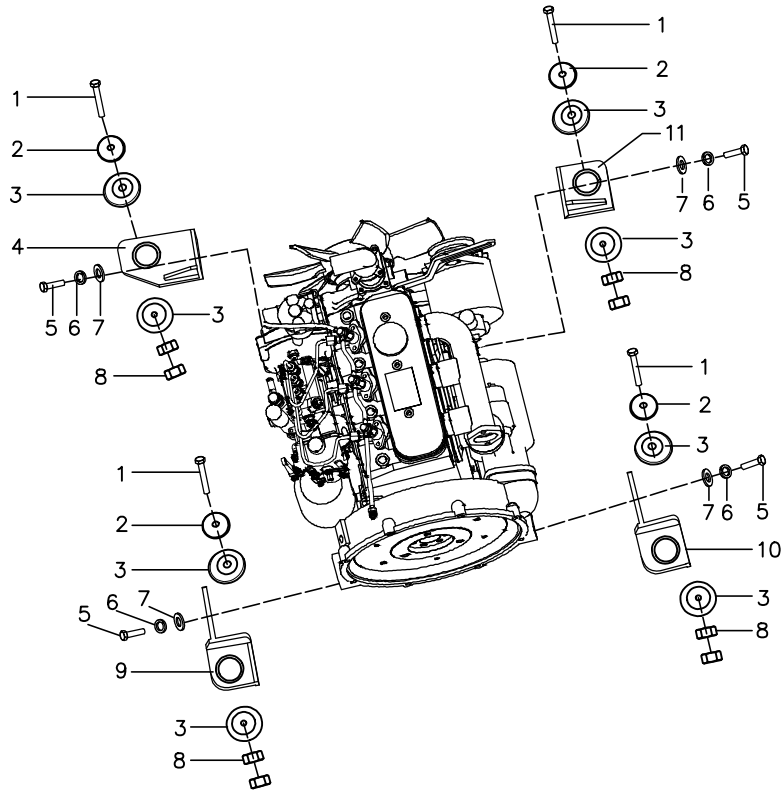
Cooling System



Cooling System

Index	Part No.	Description	Quantity	Remarks
1	1812502	Plate	1	
2	1812504	Sponge	1	
3	1812510	Radiator and Oil Cooler	1	
4	1812501	Plate	1	
5	1812506	Sponge	1	
6	GB9608	Washer	5	
7	M8X30	Bolt	5	
8	GB9612	Washer	4	
9	GB9312	Washer Spring	4	
10	6170M12	Nut	4	
11	M12X50	Bolt	4	
12	6170M8	Nut	5	
13	1812508	Clamp	4	
14	2212508	Hose	1	
15	2212502	Hose	1	
16	2212520	Water Case	1	
17	1812509	Clip	2	
18	1812530	Hose	1	
19	2212530	Bracket	1	
20	GB9708	Washer	2	
21	GB9308	Washer Spring	2	
22	M8X20	Bolt	2	

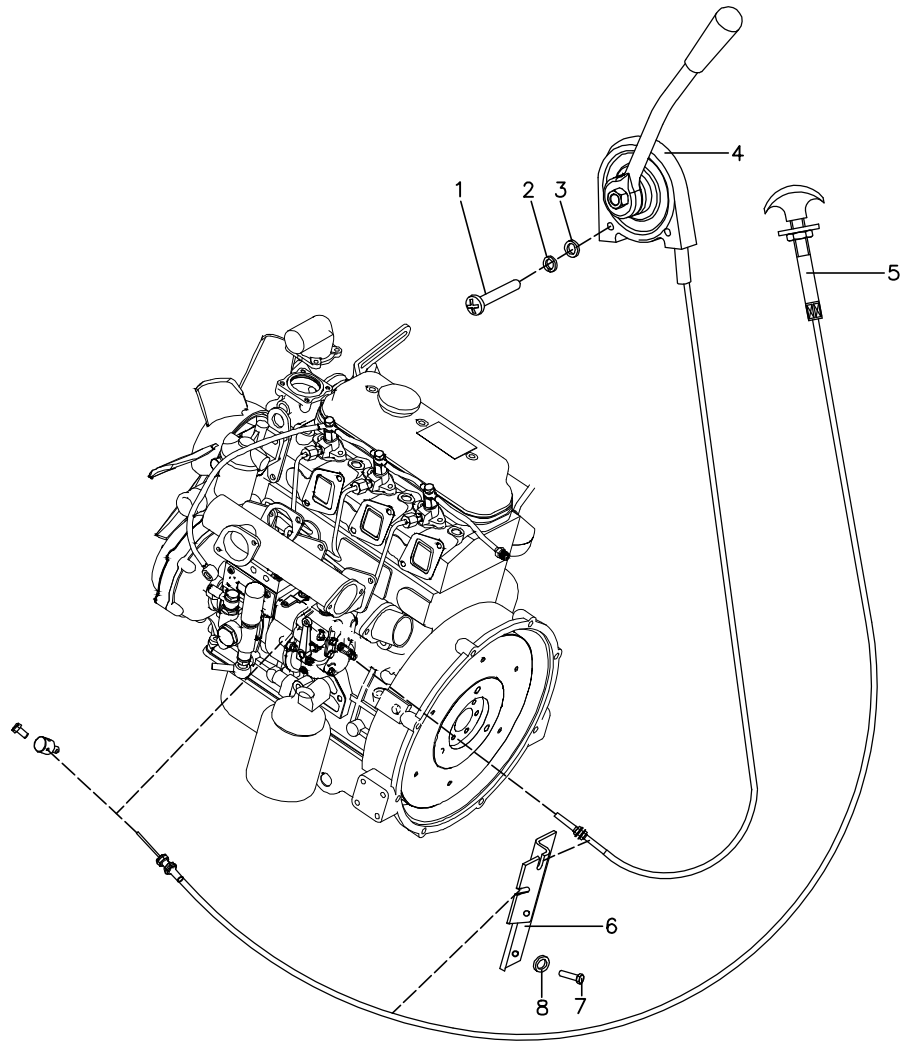
Engine Mounting Parts



Engine Mounting Parts

Index	Part No.	Description	Quantity	Remarks
1	M12X130	Bolt	4	
2	2212101	Plane	4	
3	2212015	Cushion	8	
4	2212120	Bracket	1	
5	M10X30	Bolt	16	
6	GB9310	Washer Spring	16	
7	GB9710	Washer	16	
8	6170M10	Nut	8	
9	2212140	Bracket	1	
10	2212130	Bracket	1	
11	2212110	Bracket	1	

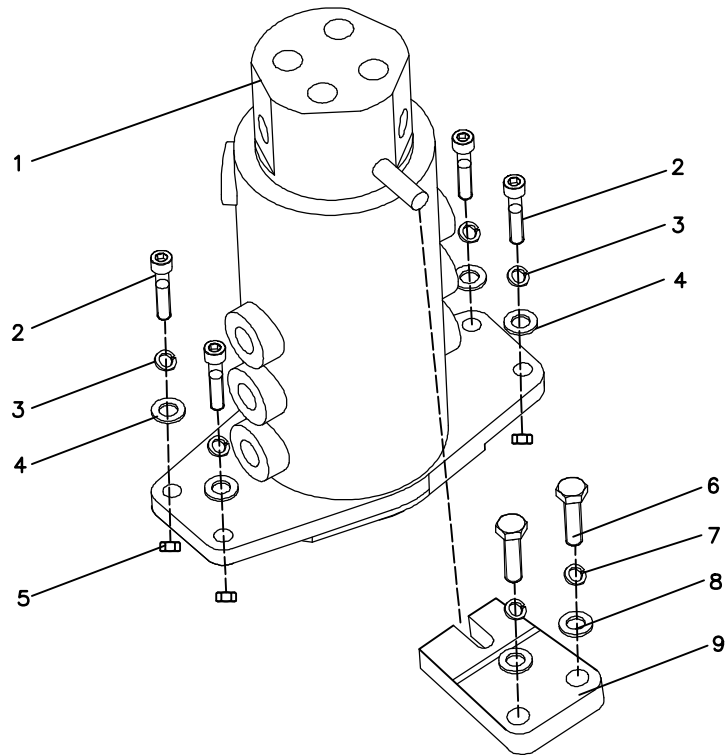
Fuel Control System



Fuel Control System

Index	Part No.	Description	Quantity	Remarks
1	M6X16	Bolt	4	
2	GB9306	Washer Spring	4	
3	GB9706	Washer	4	
4	2212710	Hand Throttle Line	1	
5	2212720	Flameout Line	1	
6	2212701	Bracket	1	
7	M8X20	Bolt	2	
8	GB9708	Washer	2	

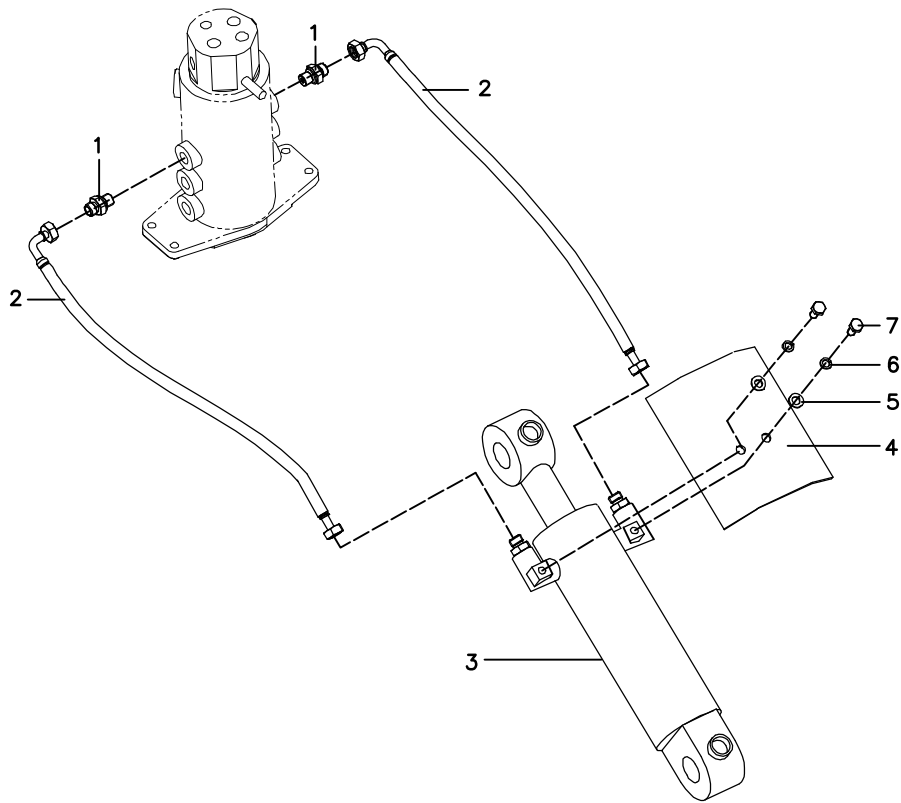
Swivel Joint



Swivel Joint

Index	Part No.	Description	Quantity	Remarks
1	1810120	Swivel Joint	1	
2	M8X40	Bolt	4	
3	GB9308	Washer Spring	4	
4	GB9708	Washer	8	
5	6170M8	Nut	8	
6	M12X35	Bolt	2	
7	GB9312	Washer Spring	2	
8	GB9712	Washer	2	
9	1802001	Yoke	1	

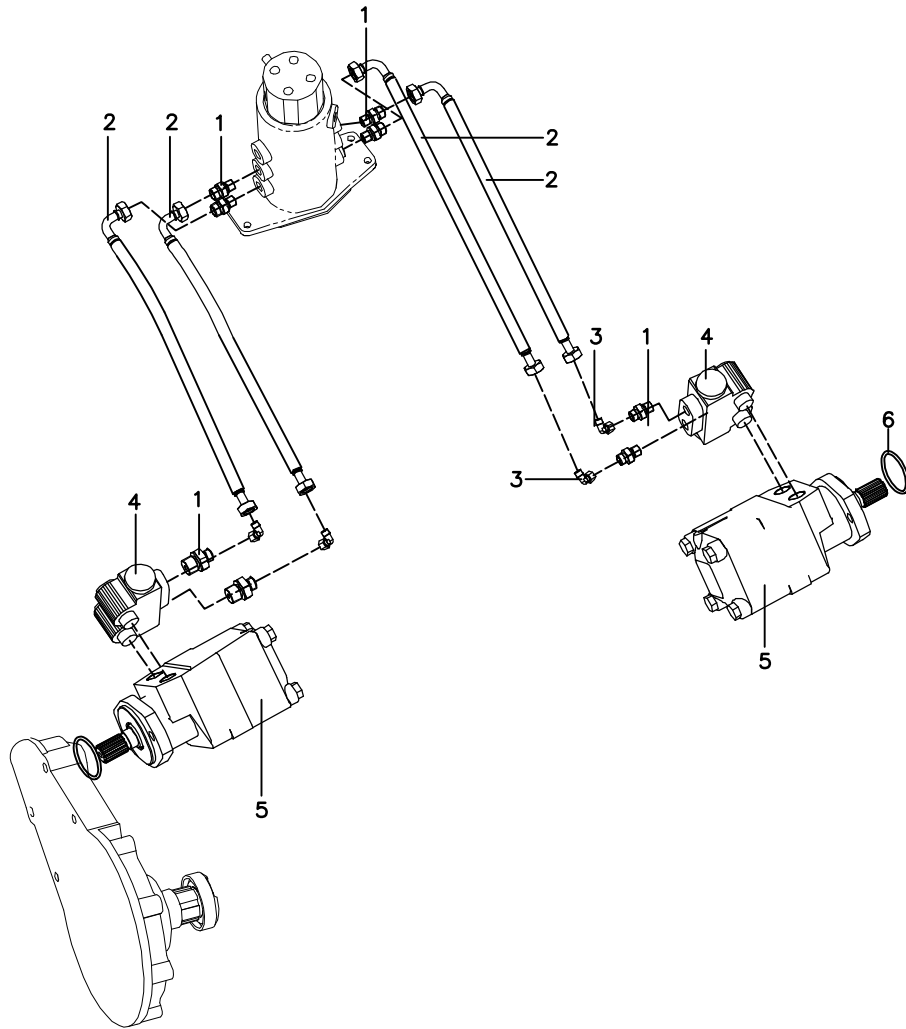
Lower Hydraulic Piping



Lower Hydraulic Piping

Index	Part No.	Description	Quantity	Remarks
1	12LG $\frac{1}{4}$ ED	Joint	2	
2	1816102	Hose	2	
3	1810110	Blade Cylinder	1	
4	1813101	Cover	1	
5	GB9310	Washer Spring	2	
6	GB9710	Washer	2	
7	M10X20	Bolt	2	

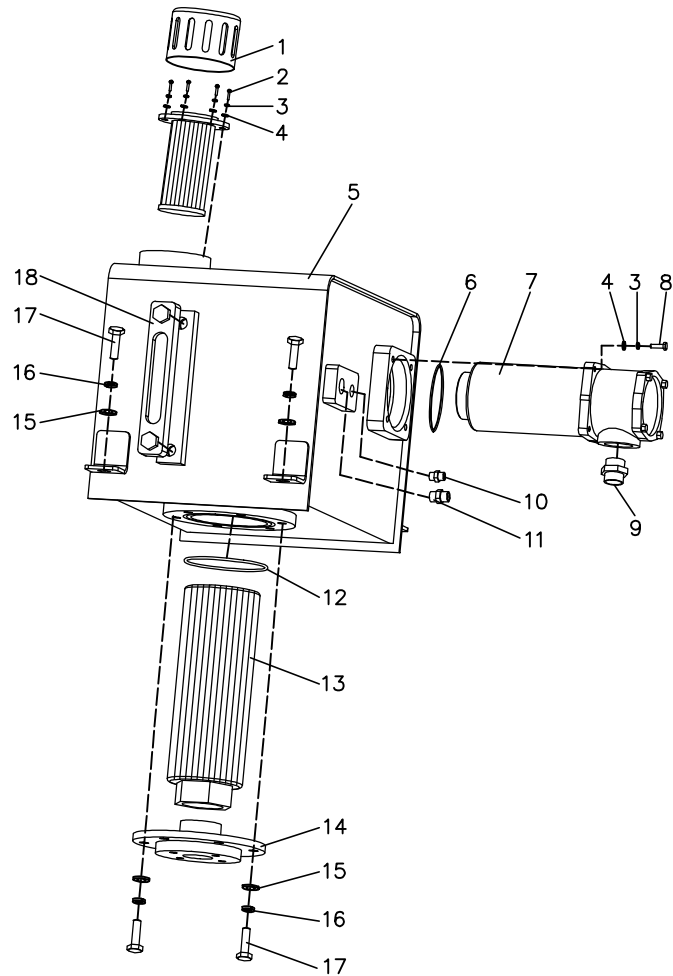
Lower Hydraulic Piping



Lower Hydraulic Piping

Index	Part No.	Description	Quantity	Remarks
1	12LG $\frac{1}{4}$ ED	Joint	4	
2	1816101	Hose	4	
3	I12L	Elbow	4	
4	1810140	Brake Valve	2	
5	1810130	Travel Motor	2	
6	ø90X3.5	O-Ring	2	

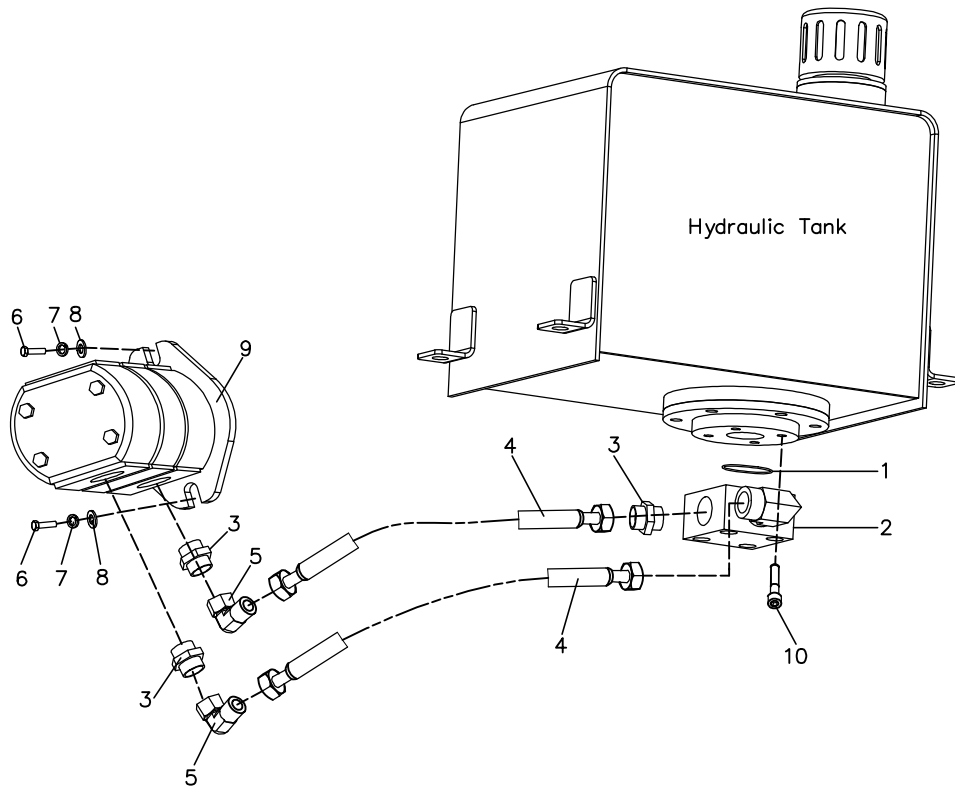
Hydraulic Tank



Hydraulic Tank

Index	Part No.	Description	Quantity	Remarks
1	1802440	Hydraulic Air Filter	1	
2	M5X15	Bolt	6	
3	GB9705	Washer	10	
4	GB9305	Washer Spring	10	
5	1802410	Hydraulic Tank	1	
6	80X3.55	O-Ring	1	
7	RF11020	Filter	1	
8	M5X25	Bolt	4	
9	18LM33ED	Joint	1	
10	08LM14ED	Joint	1	
11	12LM18ED	Joint	1	
12	100X3.55	O-Ring	1	
13	WU25060	Filter	1	
14	1802420	Flange	1	
15	GB9710	Washer	10	
16	GB9310	Washer Spring	10	
17	M10X25	Bolt	10	
18	YWZ150	Level Indicator	1	

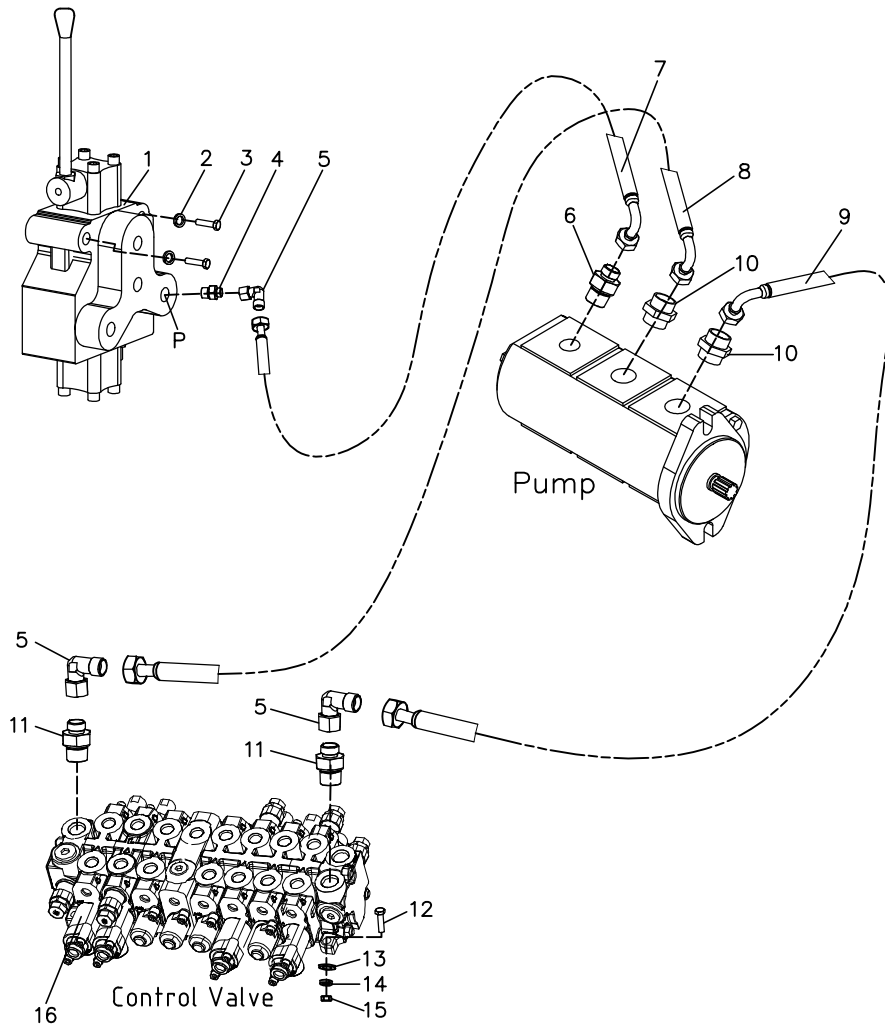
Suction Piping



Suction Piping

Index	Part No.	Description	Quantity	Remarks
1	50X3.5	O-Ring	1	
2	1802430	Flange	1	
3	22LM33ED	Joint	3	
4	1816213	Hose Assembly	2	
5	LZ22L	Elbow	2	
6	M10X30	Bolt	2	
7	GB9310	Washer Spring	2	
8	GB9710	Washer	2	
9	F101004	Pump	1	
10	M10X40	Bolt	4	

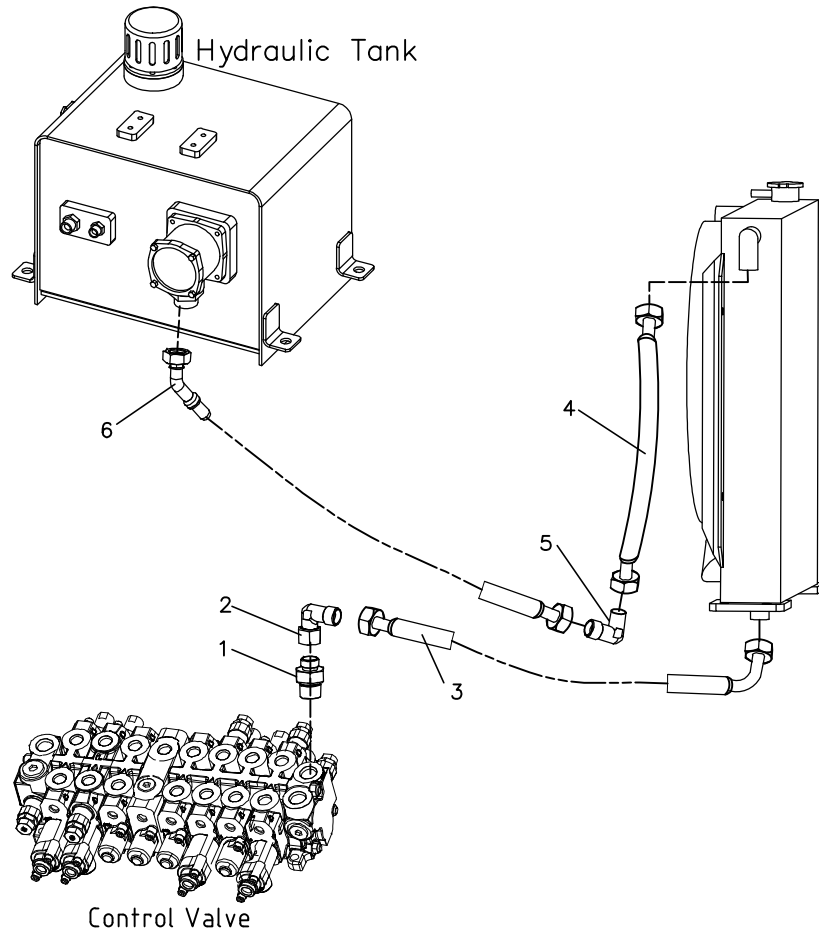
Delivery Piping



Delivery Piping

Index	Part No.	Description	Quantity	Remarks
1	1810230	Blade Valve	1	
2	GB9308	Washer Spring	2	
3	M8X60	Bolt	2	
4	12LG3/8ED	Joint	2	
5	LZ12L	Elbow	3	
6	12LM18ED	Joint	1	
7	1816214	Hose Assembly	1	
8	1816215	Hose Assembly	1	
9	1816216	Hose Assembly	1	
10	12LM22ED	Joint	2	
11	12LG1/2ED	Joint	2	
12	M10X25	Bolt	3	
13	GB9610	Washer	3	
14	GB9310	Washer Spring	3	
15	6170M10	Nut	3	
16	1810520	Control Valve	1	

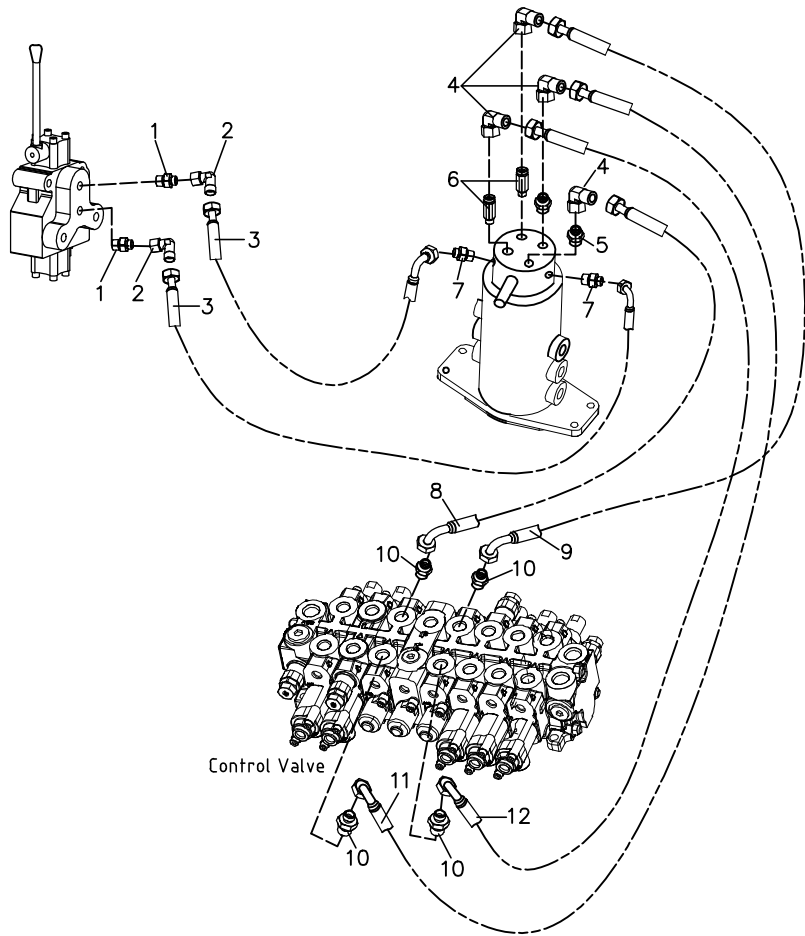
Return Piping



Return Piping

Index	Part No.	Description	Quantity	Remarks
1	18LG1/2ED	Joint	1	
2	LZ18L	Elbow	1	
3	1816226	Hose Assembly	1	
4	1816227	Hose Assembly	1	
5	118L	Joint	1	
6	1816228	Hose Assembly	1	

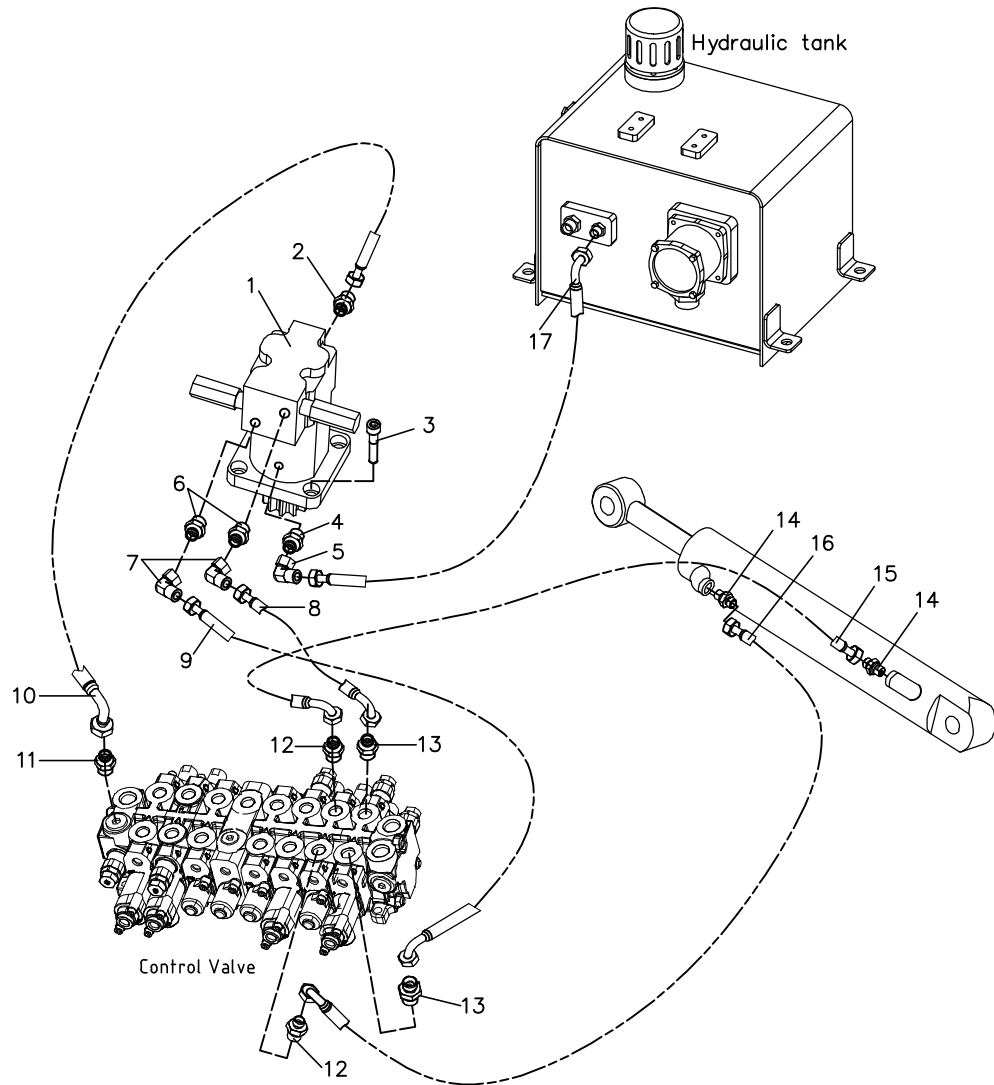
Actuator Line (To Travel Piping)



Actuator Line (To Travel Piping)

Index	Part No.	Description	Quantity	Remarks
1	08LG3/8ED	Joint	2	
2	LZ08L	Elbow	2	
3	1816217	Hose Assembly	2	
4	LZ12L	Elbow	4	
5	12LG1/4ED	Joint	2	
6	12LG1/4ED	Joint	2	
7	08LG1/4ED	Joint	2	
8	1816218	Hose Assembly	1	
9	1816219	Hose Assembly	1	
10	12LG3/8ED	Joint	4	
11	1816218	Hose Assembly	1	
12	1816219	Hose Assembly	1	

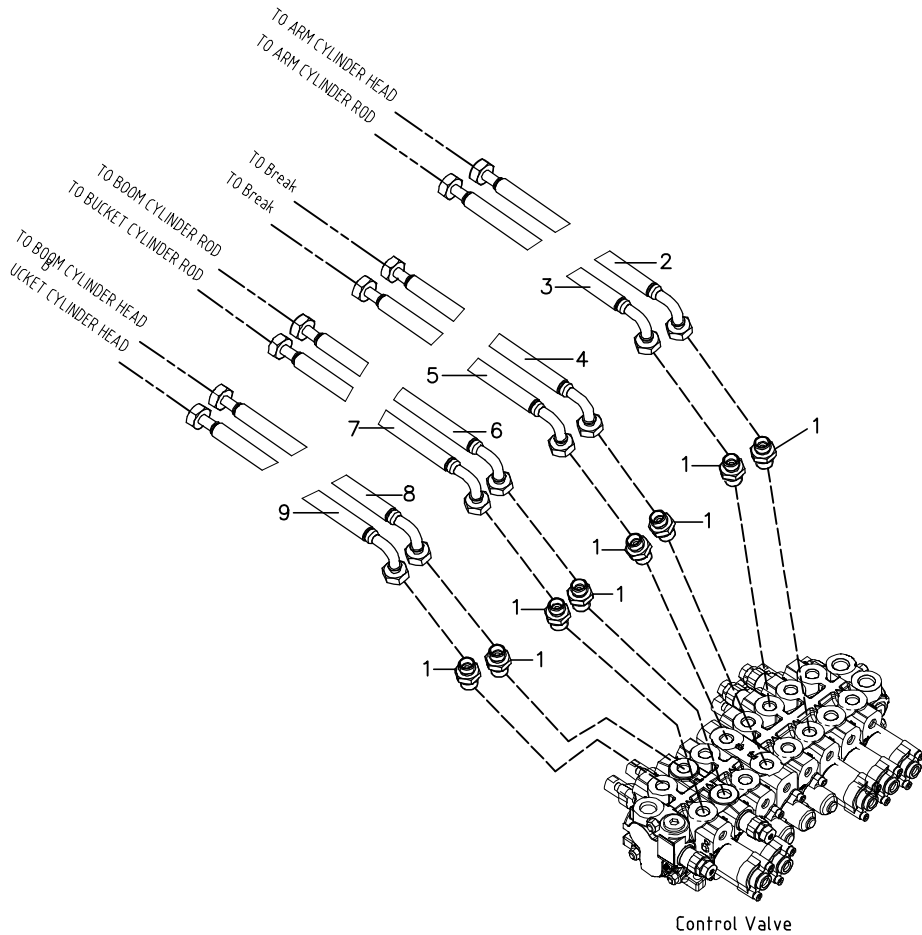
Actuator Line (Swing Piping)



Actuator Line (Swing Piping)

Index	Part No.	Description	Quantity	Remarks
1	1810260	Swing Motor	1	
2	08LG1/4ED	Joint	1	
3	M12X45	Bolt	4	
4	08LG1/4	Joint	1	
5	LZ08L	Elbow	3	
6	12LG1/2ED	Joint	2	
7	LZ12L	Elbow	2	
8	1816220	Hose Assembly	1	
9	1816221	Hose Assembly	1	
10	1816222	Hose Assembly	1	
11	08LG1/2ED	Joint	1	
12	08LG3/8ED	Joint	2	
13	12LG3/8ED	Joint	2	
14	08LG1/4ED	Joint	2	
15	1816223	Hose Assembly	1	
16	1816224	Hose Assembly	1	
17	1816225	Hose Assembly	1	

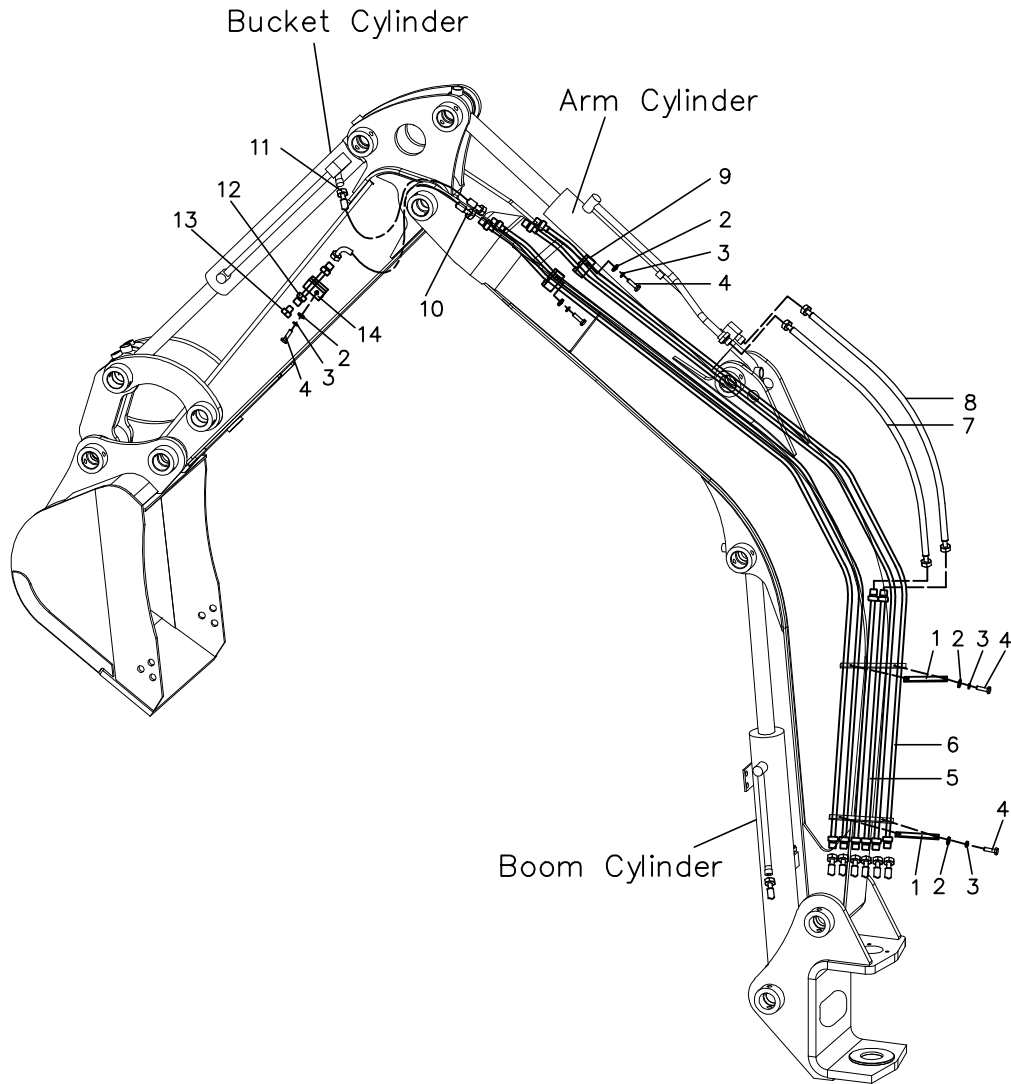
Actuator Line (To Boom Piping)



Actuator Line (To Boom Piping)

Index	Part No.	Description	Quantity	Remarks
1	12LG3/8ED	Joint	8	
2	1816212	Hose Assembly	1	
3	1816211	Hose Assembly	1	
4	1816208	Hose Assembly	1	
5	1816207	Hose Assembly	1	
6	1816204	Hose Assembly	1	
7	1816202	Hose Assembly	1	
8	1816203	Hose Assembly	1	
9	1816201	Hose Assembly	1	

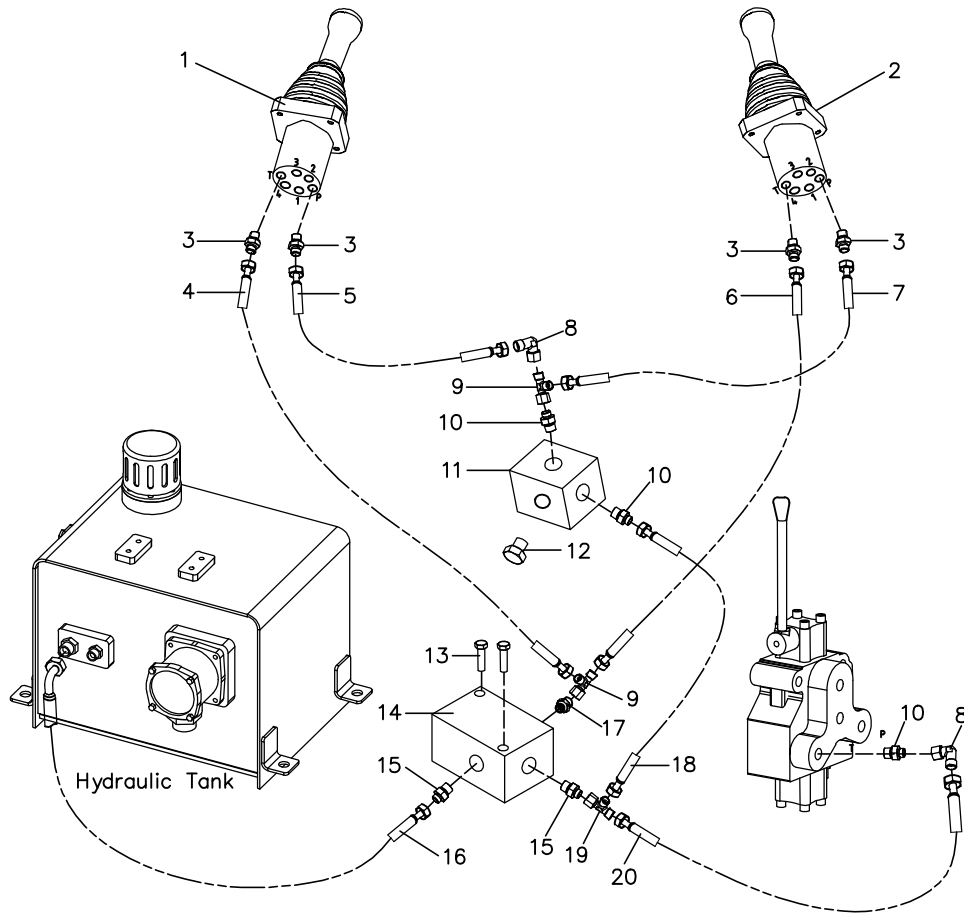
Boom Piping



Boom Piping

Index	Part No.	Description	Quantity	Remarks
1	1803101	Clamp	2	
2	GB9310	Washer Spring	8	
3	GB9710	Washer	8	
4	M10X30	Bolt	8	
5	1803120	Pipe	2	
6	1803130	Pipe	4	
7	1816501	Hose Assembly	1	
8	1816502	Hose Assembly	1	
9	1810260	Clamp	2	
10	1816503	Hose Assembly	2	
11	1816504	Hose Assembly	2	
12	1804110	Pipe	2	
13	1810260	Plug	2	
14	1803102	Clamp	2	

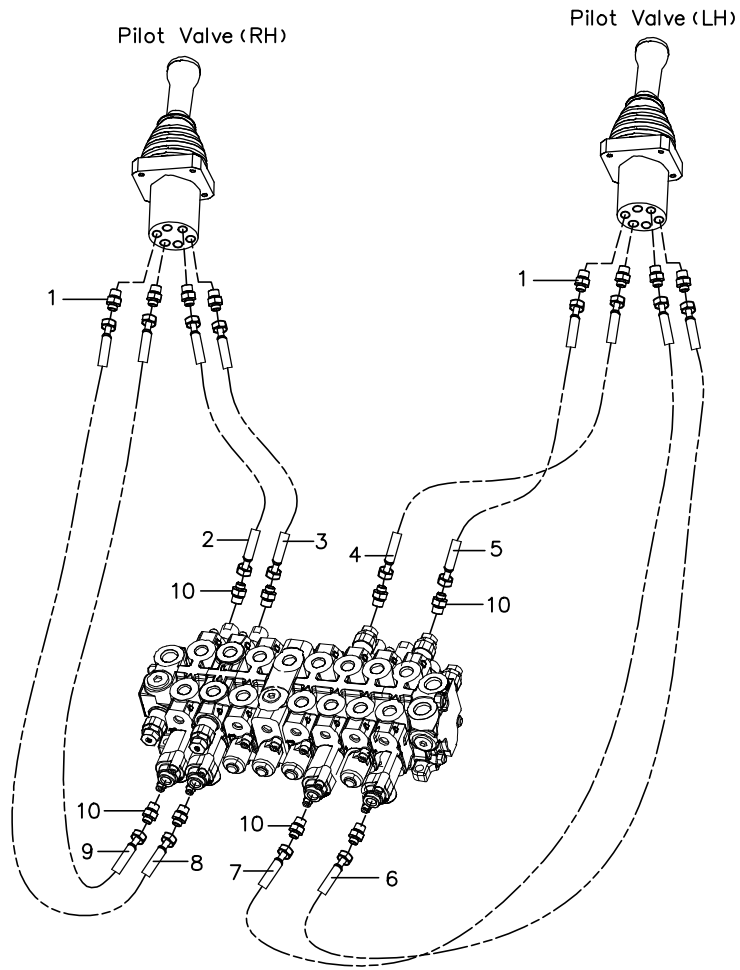
Pilot Hydraulic System



Pilot Hydraulic System

Index	Part No.	Description	Quantity	Remarks
1	1810410	Pilot Valve (RH)	1	
2	1810420	Pilot Valve (LH)	1	
3	08LG $\frac{1}{4}$ ED	Joint	4	
4	1816301	Hose Assembly	1	
5	1816302	Hose Assembly	1	
6	1816303	Hose Assembly	1	
7	1816304	Hose Assembly	1	
8	LZ08L	Elbow	2	
9	YZ08L	Connector	2	
10	08LG $\frac{3}{8}$ ED	Joint	3	
11	1810430	Valve	1	
12	DEG $\frac{3}{8}$ ED	Plug	1	
13	M8X60	Bolt	2	
14	1810440	Decompress Valve	1	
15	12LM18ED	Joint	2	
16	1816305	Hose Assembly	1	
17	08LM18ED	Joint	1	
18	1816306	Hose Assembly	1	
19	YZ120812	Connector	1	
20	1816307	Hose Assembly	1	

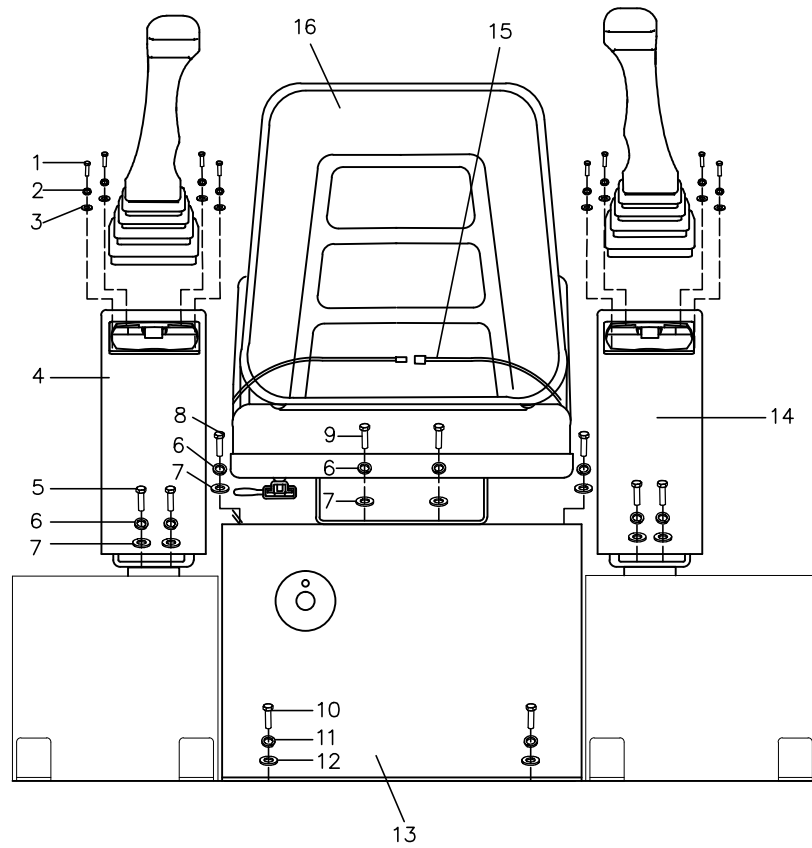
Pilot Hydraulic System



Pilot Hydraulic System

Index	Part No.	Description	Quantity	Remarks
1	08LG $\frac{1}{4}$ O	Joint	8	
2	1816307	Hose Assembly	1	
3	1816308	Hose Assembly	1	
4	1816309	Hose Assembly	1	
5	1816311	Hose Assembly	1	
6	1816312	Hose Assembly	1	
7	1816313	Hose Assembly	1	
8	1816314	Hose Assembly	1	
9	1816315	Hose Assembly	1	
10	08LG $\frac{1}{4}$ ED	Joint	8	

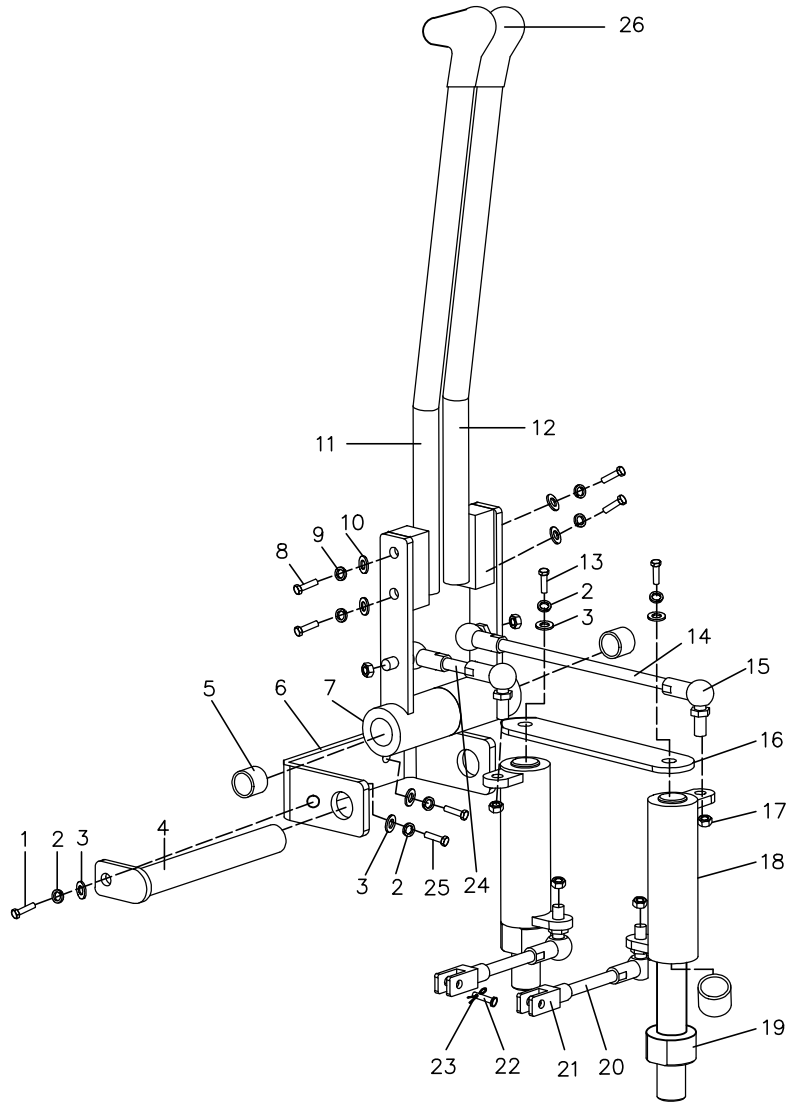
Operator Control Framework



Operator Control Framework

Index	Part No.	Description	Quantity	Remarks
1	M6X16	Bolt	8	
2	GB9306	Washer Spring	8	
3	GB9706	Washer	8	
4	1814520	Cotrol Box (R)	1	
5	M8X16	Bolt	8	
6	GB9308	Washer Spring	12	
7	GB9708	Washer	12	
8	M8X25	Bolt	2	
9	M8X50	Bolt	2	
10	M10X30	Bolt	4	
11	GB9310	Washer Spring	4	
12	GB9710	Washer	4	
13	1814300	Oprator Seat Stand	1	
14	1814510	Cotrol Box (L)	1	
15	1814610	Seat Belt	1	
16	1814600	Seat	1	

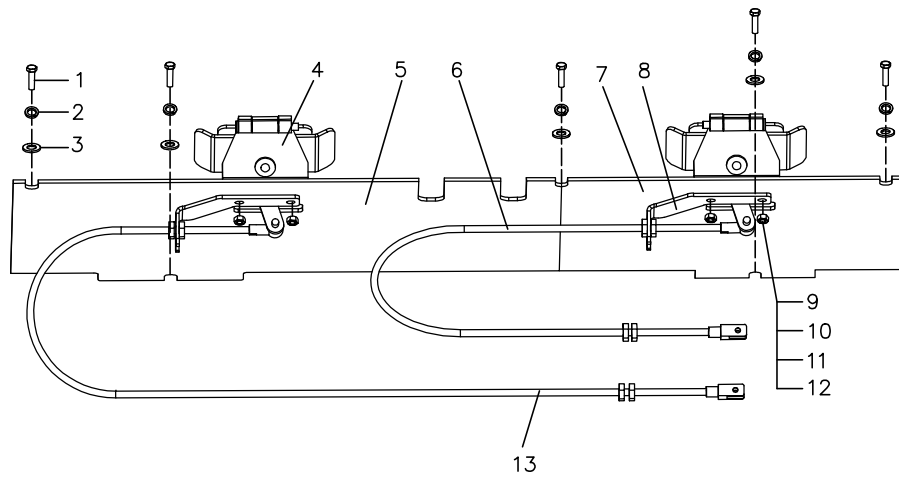
Travel Control



Travel Control

Index	Part No.	Description	Quantity	Remarks
1	M8X16	Bolt	1	
2	GB9308	Washer Spring	5	
3	GB9708	Washer	5	
4	2214120	Pin	1	
5	1814107	Bushing	6	
6	1814101	Bracket	1	
7	1814110	Pin	2	
8	M10X30	Bolt	4	
9	GB9310	Washer Spring	4	
10	GB9710	Washer	4	
11	1814150	Lever(L)	1	
12	1814150	Lever(R)	1	
13	M8X20	Bolt	2	
14	M8X180	Bolt	1	
15	1814106	Globe	6	
16	1814102	Plate	1	
17	6170M8	Nut	14	
18	1814130	Rotate Bushing	2	
19	1814140	Pin	2	
20	M8X85	Bolt	2	
21	1814105	Fork	2	
22	GB81806	Pin	2	
23	GB02X15	Cotter Pin	2	
24	M8X40	Bolt	1	
25	M8X25	Bolt	6	
26	1814160	Knob	2	

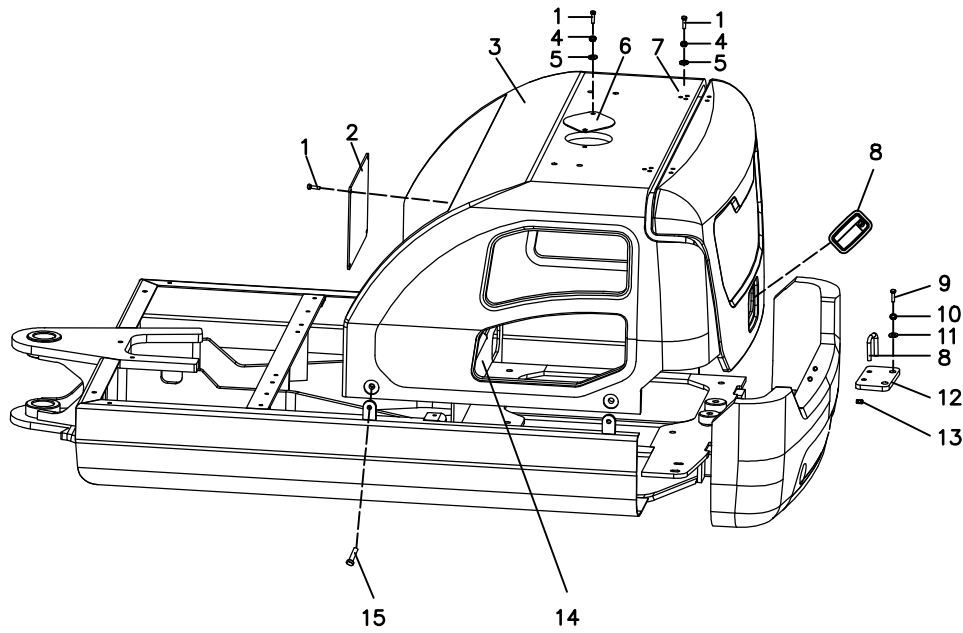
Operator Control Framework (Pedal)



Operator Control Framework (Pedal)

Index	Part No.	Description	Quantity	Remarks
1	M10X20	Bolt	5	
2	GB9310	Washer Spring	5	
3	GB9710	Washer	5	
4	1814200	Foot Pedal	2	
5	1814420	Floor(R)	1	
6	1814510	Flexible Cable	1	
7	1814410	Floor(L)	1	
8	1814201	Bracket	2	
9	M8X20	Bolt	4	
10	GB9308	Washer Spring	4	
11	GB9708	Washer	4	
12	6170M8	Nut	4	
13	1814520	Flexible Cable	1	

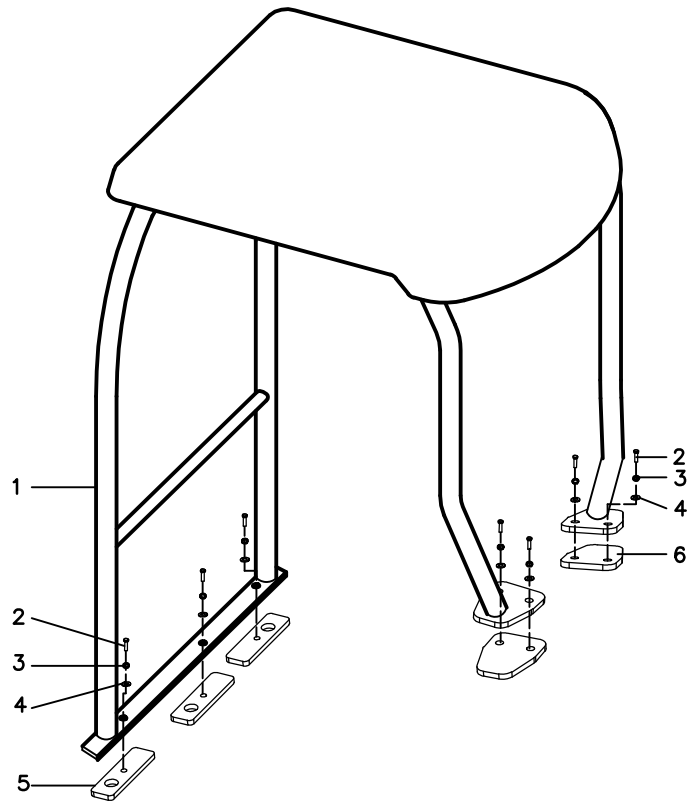
Hood Assembly



Hood Assembly

Index	Part No.	Description	Quantity	Remarks
1	M8X20	Bolt	16	
2	1802601	Cover	1	
3	1802600	Hood	1	
4	GB9308	Washer Spring	12	
5	GB9708	Washer	12	
6	1802602	Cover	1	
7	1802603	Hinge	2	
8	NBS905B	Lock Assembly	1	
9	M10X20	Bolt	2	
10	GB9310	Washer Spring	2	
11	GB9710	Washer	2	
12	1802221	Plate	1	
13	6170M10	Nut	2	
14	1816037	Sponge	1	
15	1802003	Bolt	4	

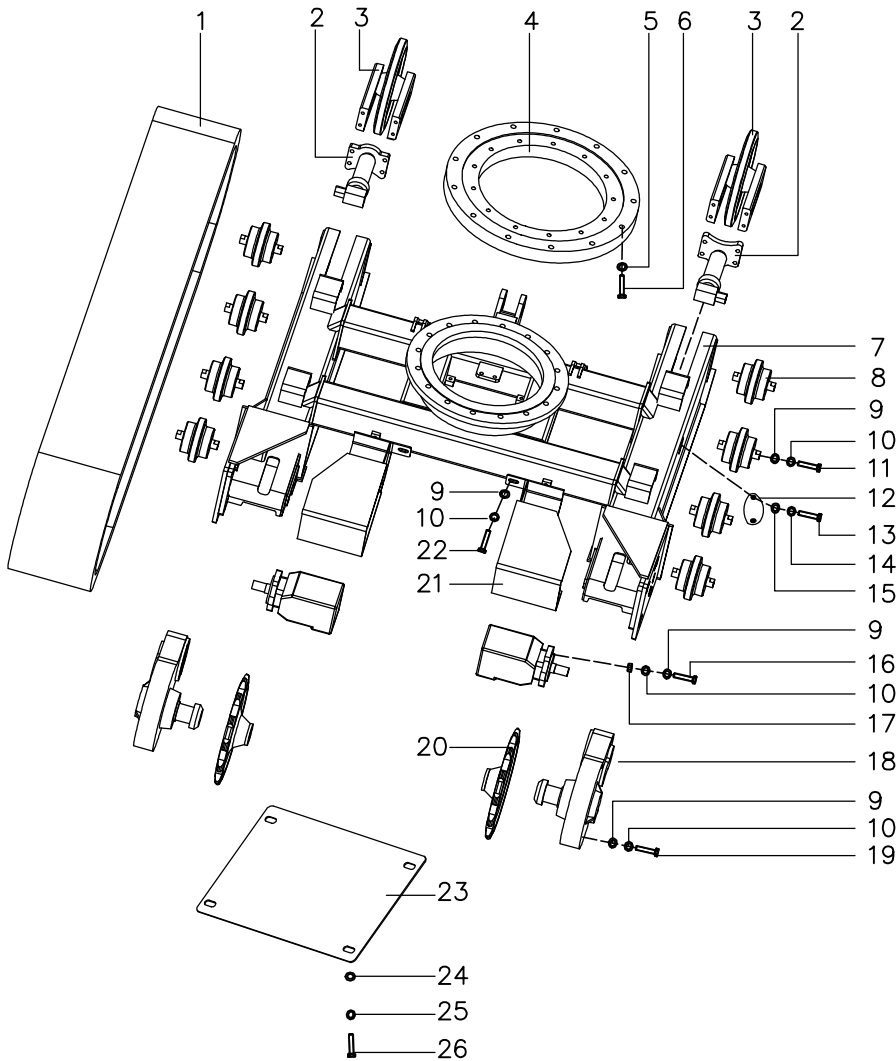
Cab Assembly



Cab Assembly

Index	Part No.	Description	Quantity	Remarks
1	1811100	Cab	1	
2	M12X35	Bolt	7	
3	GB9312	Washer Spring	7	
4	GB9712	Washer	7	
5	1811101	Rubber Plate	3	
6	1811102	Rubber Plate	1	

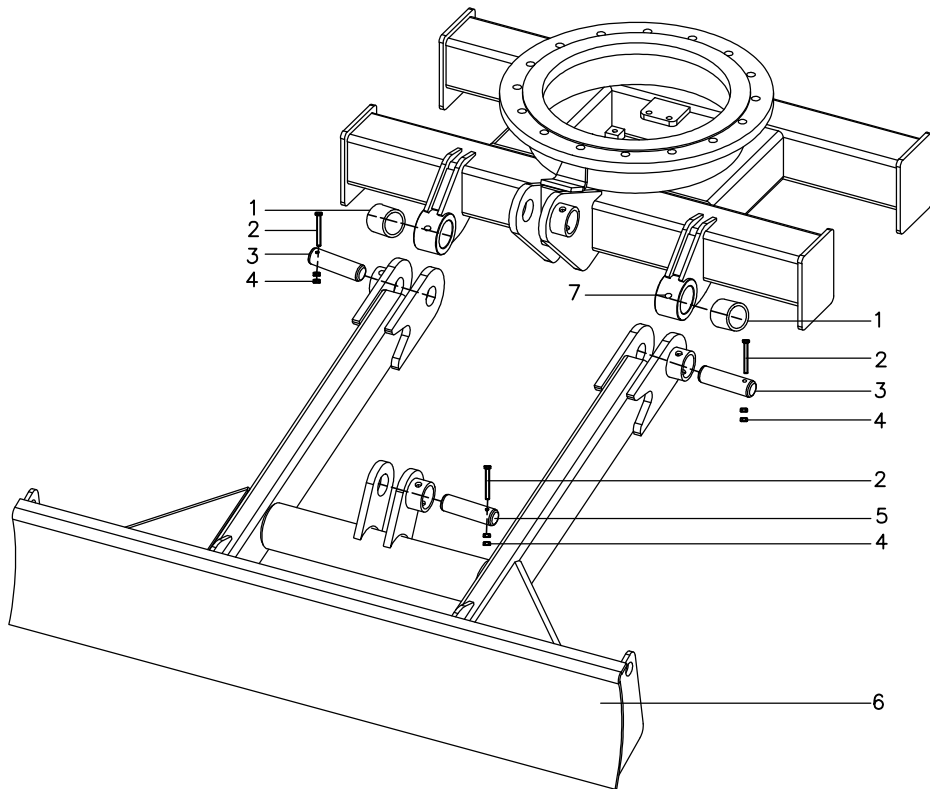
Travel System



Travel System

Index	Part No.	Description	Quantity	Remarks
1	1801060	Rubber Track Assembly	2	
2	1801040	Front Idler Assembly	2	
3	1801050	Tension Device	2	
4	1801090	Swing Circle	1	
5	GB9714	Washer	16	
6	M14X55	Bolt	16	
7	1801100	Track Frame	1	
8	1801030	Track Roller Assembly	8	
9	GB9712	Washer	34	
10	GB9312	Washer Spring	34	
11	M12X30	Bolt	16	
12	1801003	Cover	2	
13	M8X20	Bolt	4	
14	GB9708	Washer	4	
15	GB9308	Washer Spring	4	
16	M12X110	Bolt	4	
17	6170M12	Nut	4	
18	1801070	Speed Reducer	2	
19	M12X55	Bolt	8	
20	1801080	Sprocket	2	
21	1801020	Cover	2	
22	M12X20	Bolt	6	
23	1801002	Cover	1	
24	GB9710	Washer	4	
25	GB9310	Washer Spring	4	
26	M10X20	Bolt	4	

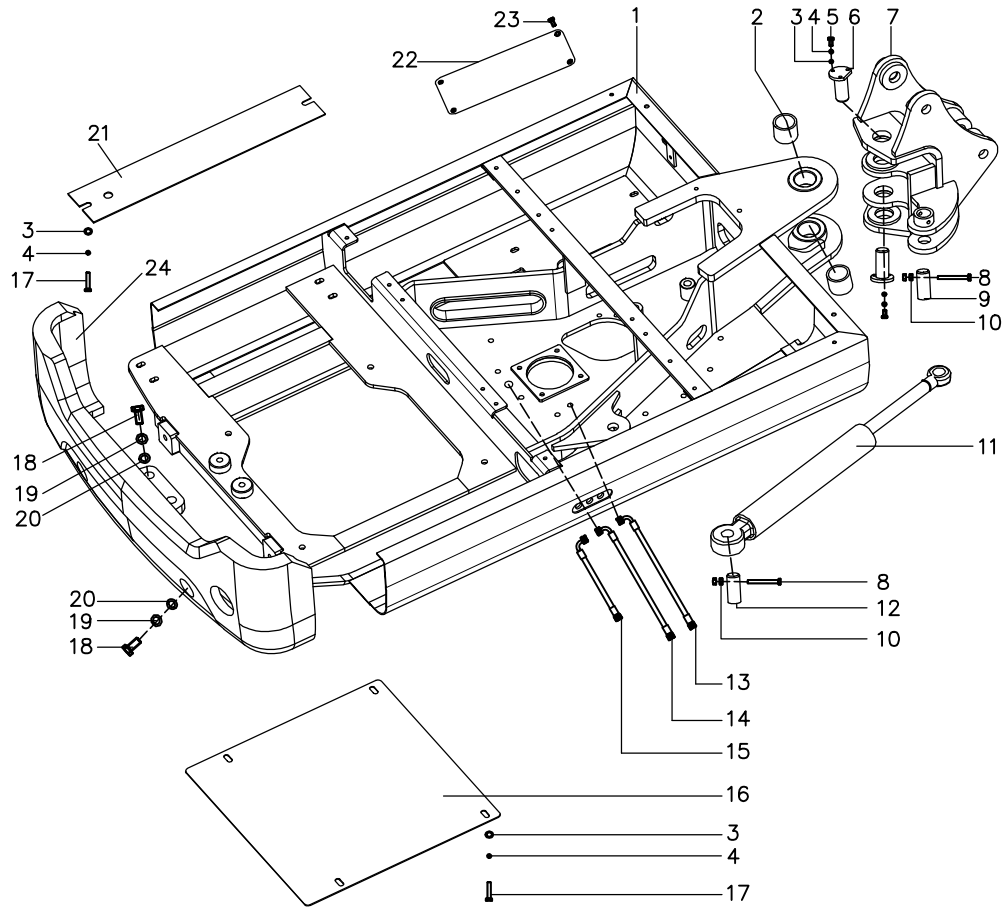
Blade Assembly



Blade Assembly

Index	Part No.	Description	Quantity	Remarks
1	CT02003	Bushing	2	
2	M10X90	Bolt	4	
3	1809005	Pin	2	
4	6170M10	Nut	8	
5	1809006	Pin	2	
6	1813100	Blade	1	
7	YBM10X1	Fitting, Grease	2	

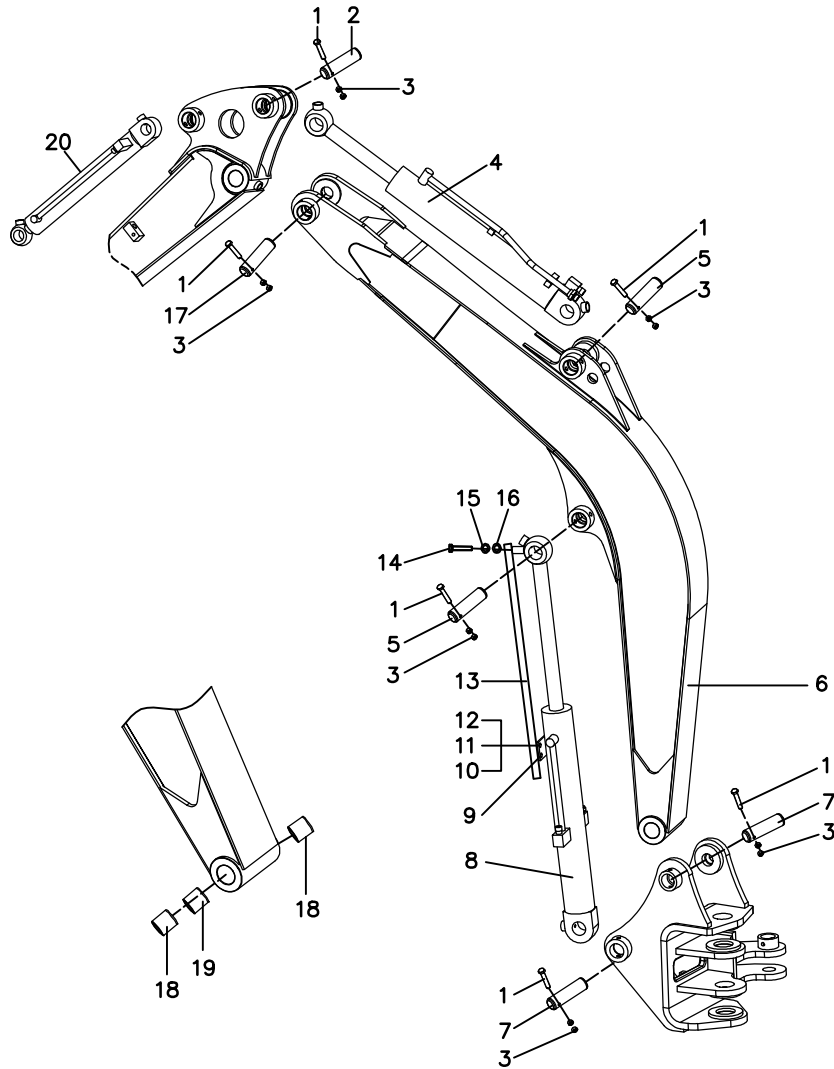
Revoling Frame



Revoling Frame

Index	Part No.	Description	Quantity	Remarks
1	1802100	Frame	1	
2	CT02048	Bushing	2	
3	GB9710	Washer	12	
4	GB9310	Washer Spring	12	
5	M10X25	Bolt	6	
6	1809050	Pin	1	
7	1802300	Steering Head	1	
8	M8X60	Bolt	2	
9	1809007	Pin	1	
10	6170M10	Nut	4	
11	1816210	Oil Cylinder	1	
12	1809008	Pin	1	
13	1816035	Tube	1	
14	1816036	Tube	1	
15	1816037	Tube	1	
16	1802003	Cover	1	
17	M10X20	Bolt	6	
18	M16X50	Bolt	4	
19	GB9316	Washer Spring	4	
20	GB9716	Washer	4	
21	1802004	Cover	1	
22	1802102	Cover	1	
23	M8X20	Bolt	4	
24	1802200	Counterweight	1	

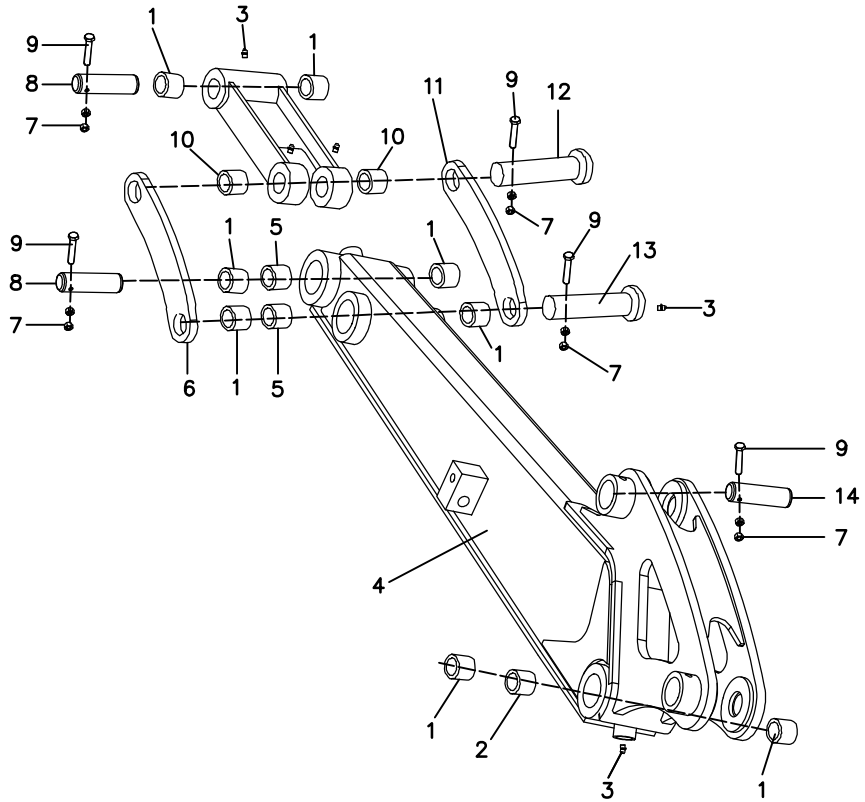
Work Equipment



Work Equipment

Index	Part No.	Description	Quantity	Remarks
1	M8X60	Bolt	2	
2	1809002	Pin	1	
3	6170M8	Nut	16	
4	1810320	Arm Cylinder	1	
5	1809003	Pin	2	
6	1803100	Boom	1	
7	1809001	Pin	2	
8	1810310	Boom Cylinder	1	
9	1803204	Plate	1	
10	M8X20	Bolt	4	
11	GB9708	Washer	4	
12	GB9308	Washer Spring	4	
13	1803210	Cylinder Guard	1	
14	M10X20	Bolt	1	
15	GB9310	Washer Spring	1	
16	GB9710	Washer	1	
17	1809030	Pin	1	
18	CT01026	Bushing	2	
19	1803001	Bushing	1	
20	1810330	Bucket Cylinder	1	

Work Equipment



Work Equipment

Index	Part No.	Description	Quantity	Remarks
1	CT01026	Bushing	8	
2	1804001	Bushing	1	
3	YBM10X1	Fitting, Grease	6	
4	1804100	Arm	1	
5	1804002	Bushing	2	
6	1807100	Right Pendulum Lever	1	
7	6170M8	Nut	10	
8	1809001	Pin	2	
9	M8X60	Bolt	5	
10	CT01026	Bushing	2	
11	1806100	Left Pendulum Lever	1	
12	1809010	Pin	1	
13	1809020	Pin	1	
14	1809002	Pin	1	