



FITTING MANUAL

FASTBACK HARDTOP



Welcome to the 427 Hardtops fitting guide. The following text and photos are intended as a guide to help you fit our FASTBACK Hardtop.

PREPARATION

To ease fitting it is advisable to raise the rear of the car and secure on axle stands. You will then need to remove the wind deflectors and rear view mirrors if fitted.

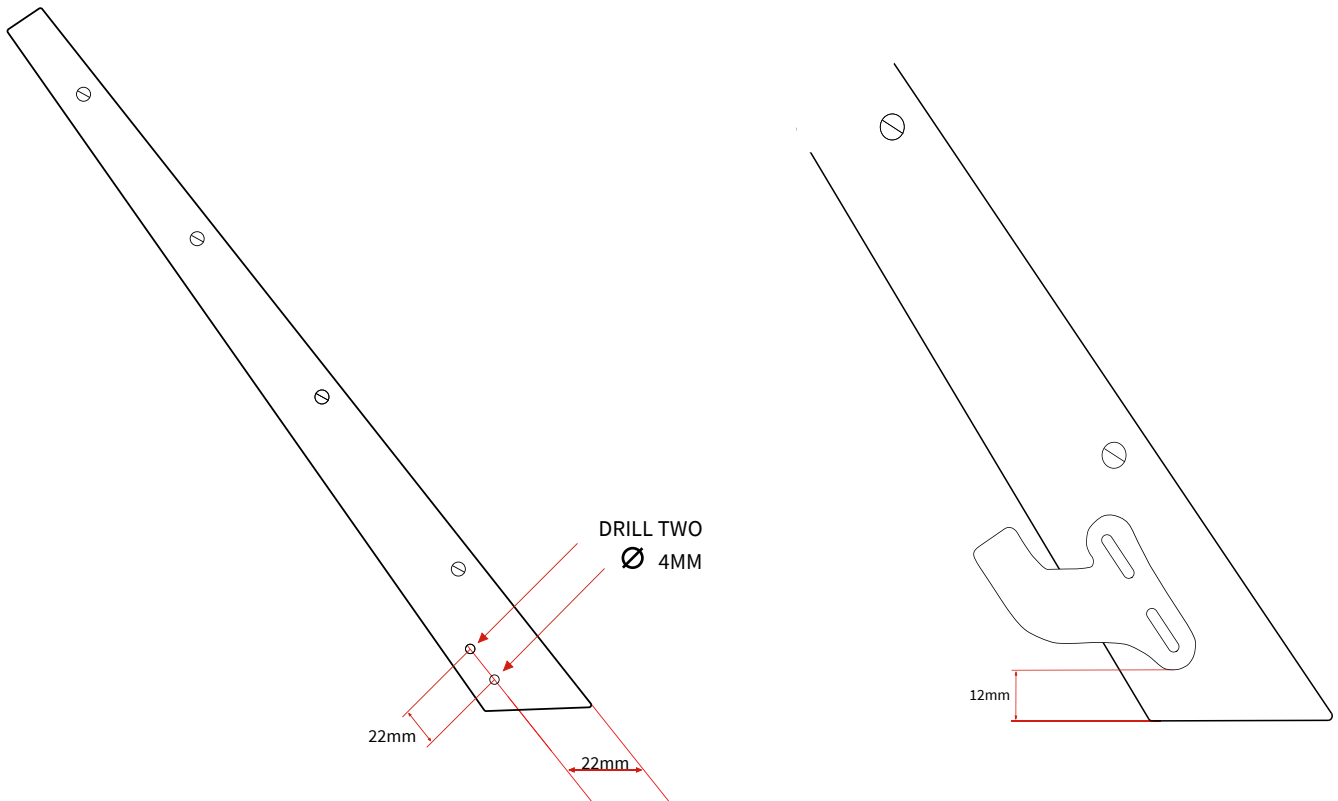
With some Cobra brands, especially with the Factory Five MK4, it may be necessary to swap out the oversized tall rollbars with shorter aftermarket ones (available at breezeautomotive.com).

In most cases it will be necessary to adjust the rake (angle) of the windscreen. This is achieved by slackening the bolts that secure the windscreen to the chassis. Trial fit the hardtop and re-tighten the screen, securing the bolts when you are happy with the fit around the screen. See images below.



FITTING

1. Your fitting kit includes two laser-cut brackets. Using the diagrams below as a guide, drill two 4mm holes on each side of the windscreen pillars and secure the brackets in place with the provided fittings.

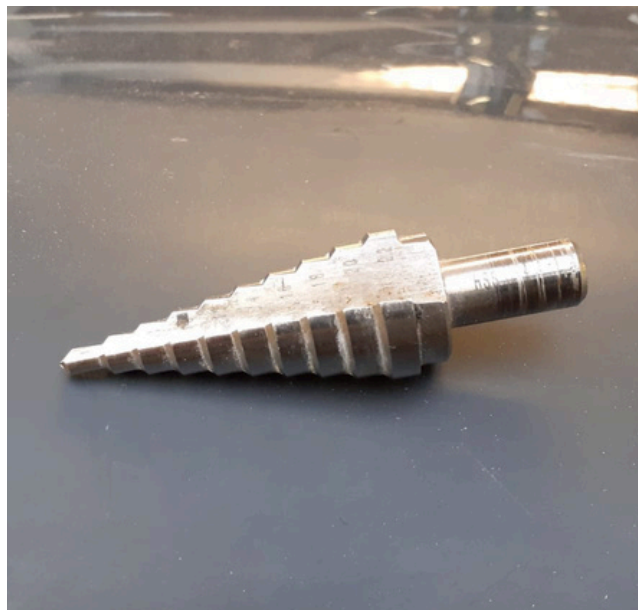


2. Position the Hardtop onto the car, ensuring proper alignment with the boot, wheel arches, and the lower front windscreen corners before proceeding to the next step.

FITTING

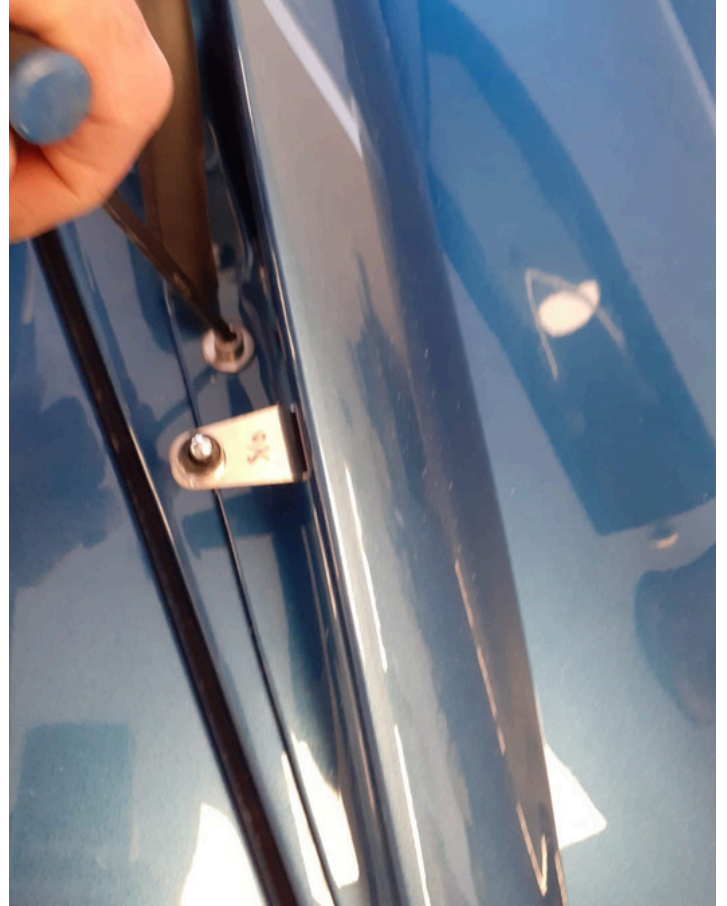
3. Locate the pre-drilled holes on the hardtop (two over each wheel arch). Starting at the rear of the car, use these as a guide and drill an M6-diameter pilot hole through each hardtop hole and into the car body. Ensure there are no obstructions underneath.

4. Remove the hardtop and enlarge the newly drilled holes to M10 diameter. Install the supplied body fittings. To minimise the risk of chipping or damaging the body, we recommend using a Christmas tree-style hole cutter.



FITTING

5. Refit the hardtop and secure it using the bolts provided in the fitting kit.



FITTING

6. Door Fitting:

Measure 45mm from the front corner of the door and approximately 10mm in from the edge.



Using a worn or blunt M5 drill bit, drill a hole to fit the supplied elbow fitting.



FITTING

7. Install the side window and screw the depressurized gas ram into the elbow fitting on the door. Ensure you secure the hinge with the R clip to prevent the window from lifting. You can make adjustments by loosening the nuts and bolts on the hinge.



You are now ready for the paint shop.

POST PAINT ASSEMBLY

1. Rear Window:

Bolt the upper part of the rear window through the tailgate.



Bond the lower section using the supplied adhesive.



POST PAINT ASSEMBLY

2. Rear Quarter Windows:

Align the rear quarter windows evenly with the side windows and bond them overnight using the provided adhesive.



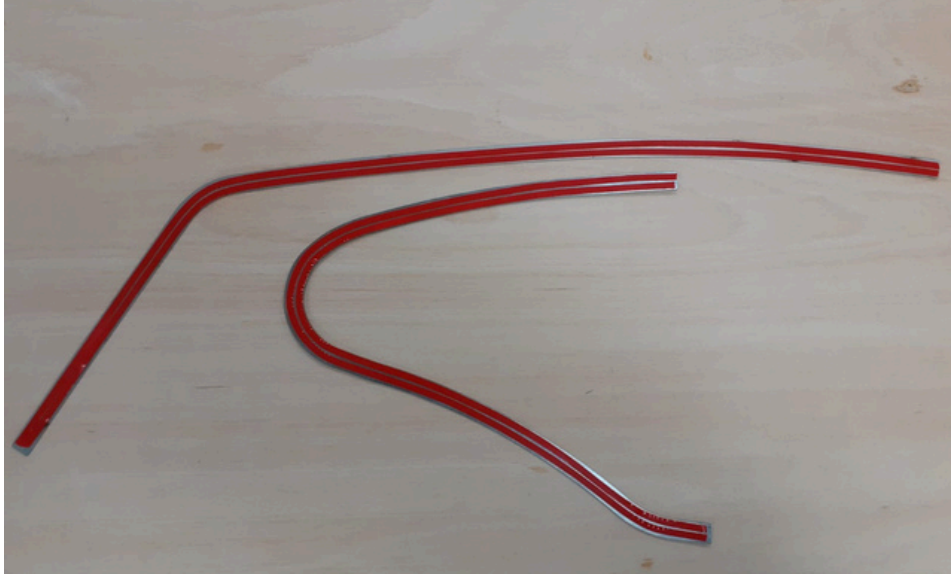
If minor adjustments are needed, slacken the M4 bolts on the side window hinges.



POST PAINT ASSEMBLY

3. Final Adjustments:

Install the stainless steel trims using the double-sided tape from the fitting kit.



Once the hardtop is bolted down, adjust and secure the front lower over-center catches to suit.



FITTING KIT

2 x Screen pillar brackets and screws

4 x Hardtop body fittings

1 x Roll of adhesive tape

1 x Tube of window adhesive

1 x Window key

