



FORWARD



FARMS

WHO WE ARE

Forward Farms is a beacon for change, born out of a passion for independent farmland and the desire to have a collective, positive impact on the planet through raising livestock.

With a new line of emerging beef products, we hope to introduce consumers to a groundbreaking concept—100% Carbon Neutral Raised Beef—and invite farms to join a forward-thinking movement to advance conventional agricultural practices.

After several years in development, we have found that beef raised on carbon net-zero farms is not only beef that is better for the planet, but also beef that boasts superior taste and tenderness.

Forward Farms promotes regenerative agriculture to restore soil health naturally, while reducing chemical use and supporting biodiversity. This progressive approach advances every step of the cattle raising process and in turn creates farms which have net-zero carbon emissions.

In order to truly move farming forward, it will take all of us making choices that consider our personal health as well as the planet's.

OUR ORIGIN

Our parent company, 4K Cattle Company, has been raising cattle in Montana since 1901. The land has always been the most important asset to our business, and our standards are shaped by a longstanding commitment to create a healthier future for our family and generations to come.

4K Cattle Co. is building on the past by looking ahead to the future with our first consumer brand, Forward Farms—a groundbreaking collection of Carbon Neutral Raised beef products that recognize the pressing need for farms to advance conventional agricultural practices that burden the environment. By making choices every day that consider personal health and the planet's, each of us contributes to moving forward, together—restoring ecosystems, promoting biodiversity, and respecting animal welfare.



HOW WE'RE DIFFERENT

01

Forward Farms is first to market with 100% carbon neutral raised beef raised in the U.S.

02

We work with a network of farms that, through the right balance of farm activities, are able to sequester more carbon than they emit, effectively reaching carbon neutrality without offsetting or purchasing credits.

03

We utilize precise greenhouse gas accounting systems to measure emissions acre by acre, herd by herd, farm by farm.

04

All our processes and claims are verified by a trusted and reputable third party – Legacy Verified

05

We are large enough to be efficient but small enough to care. We process 10 to 20 semi loads of cattle per week so availability of cuts is strong and freight is efficient. And we are a small, nimble organization priding ourselves on fast customer service.

OUR LOGO

Our logo is a visual representation of the harmony we strive to bring back to our planet.

The interlocking “F’s” not only are the initials of the Forward Farms brand name, but also come together to create a balanced and strong symbol of the interconnectedness.

The words “Forward” and “Farms” sit centered above and below the symbol to highlight our desire to bring balance and harmony back to the ecosystem of animals, plants, and land.

FORWARD



FARMS

OUR PRODUCTS



Lean Fresh Ground Beef Items - 93%, 90% and 85%.



Fresh Steaks and Roasts.

GROUND BEEF

Front Label

Our beef, sold under our Forward Farms™ brand, is available as either Forward Farms or USDA Choice graded. Forward Farms aims to market 7,000 animals its first year, with supply capacity the second year of approximately 25,000 animals. Forward Farms cattle are raised in the Northern Rockies and Pacific Northwest and are processed in Idaho and Northern California.

Prominent Logo Placement

100% Carbon Neutral Raised Beef Callout

Unique claims of GHG emissions
USDA Approved Language

Third Party Verified Callout



GROUND BEEF

Back Label

Our mission, summarized

Information about
Forward Farms mission

QR Code for consumers
to learn more

ACRE BY ACRE, CHANGING OUR WORLD

Forward Farms is leading a movement to completely change conventional agriculture that burdens the environment and contributes to greenhouse gas emissions.

Our goal is to promote regenerative agriculture to restore soil health naturally. This progressive approach advances every step of the cattle raising process and in turn creates farms which have net-zero carbon emissions.

forwardfarmsUSA.com

FORWARD
FARMS



Roscoe, MT 59071



Nutrition Facts

4 servings per container
Serving size 4 OZ (113g)

Amount per serving

Calories	288
% Daily Value*	
Total Fat 22.88g	35%
Saturated Fat 8.7g	43%
Trans Fat 0.6g	
Cholesterol 80.5mg	25%
Sodium 7mg	3%
Total Carbohydrate 0g	0%
Dietary Fiber 0g	0%
Total Sugars 0g	
Includes 0g Added Sugars	0%
Protein 19.47g	
VE D	Calcium 2%
IRON 13%	Potash 306mg

*The % Daily Value (DV) tells you how much a nutrient in a serving of food contributes to a daily diet. 0-100% indicates a day is used for general nutrition advice.

Ingredients: Cattle meat or (small) grade beef ground beef

SAFE HANDLING INSTRUCTIONS

This product was prepared from inspected and passed meat. Some food products may contain bacteria that could cause illness if the product is mishandled or cooked improperly. For your protection, follow these safe handling instructions:



Keep raw meat separate from other foods. Wash working surfaces (including cutting boards), utensils, and hands after touching raw meat.



Keep hot foods hot. Refrigerate leftovers immediately or discard.



Keep refrigerated or frozen. Thaw in refrigerator or microwave.



Cook thoroughly

SPEC SHEET

Carbon Neutral Raised Grass Fed Beef Program

*Cattle and Meat Specifications
(The Technical Stuff)*

- Cattle all have predominantly English beef genetics: Angus, Hereford, Charolais.
- Cattle are raised in Montana, Idaho, Oregon and Washington.
- Cattle are processed in Burley, ID (primary plant) with overflow production in Idaho Falls, ID and Yreka, CA.
- Cattle are grass-fed and grass-finished.
- Any cattle treated with antibiotics are identified and removed from the program.
- Cattle are raised without the use of growth hormones.
- Livestock transportation is limited to 500 miles maximum with average livestock traveling less than 150 miles.
- Carcasses are either graded choice by USDA or graded to choice standards internally. If graded internally, only carcasses making an internal grade of 'A' (Choice marbling score and meat color) or 'B' (Select marbling score and meat color) are kept in the Forward Farms program. Approximately 80% of Forward Farms internally graded carcasses make 'A' grade with approximately 19% making 'B' grade and less than 1% grading below 'B'. Any carcasses not making at least a 'B' grade are excluded from the program. A and B Carcass example pictures shown next slide.
- All participating farms and ranches are certified carbon neutral utilizing Carbon Accounting Software created by the USDA and then third party verified by Legacy Verified LLC (<https://www.legacyverified.com/>).

SPEC SHEET

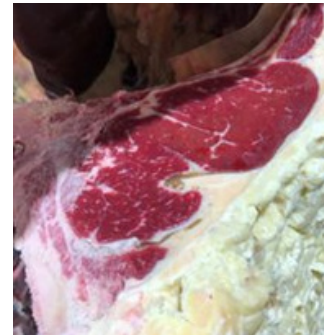
Carbon Neutral Raised Grass-Fed Beef Program

Carcass examples

'A' Carcass Examples



'B' Carcass Examples



BEEF RAISED FOR A BETTER PLANET



Introducing Forward Farms, a new line of 100% Carbon Neutral Raised Grass-Fed Beef advancing conventional agriculture practices and overall movement for farmers to make daily decisions that have a positive impact on the planet. Learn more at ForwardFarmsUSA.com

FOR BEEF EATERS WHO CRAVE A BETTER PLANET

Antibiotic & Hormone Free • Independent US farms • Minimizing greenhouse gas emissions



BEEF RAISED FOR A BETTER PLANET



Introducing Forward Farms, a new line of 100% Carbon Neutral Raised Grass-Fed Beef advancing conventional agriculture practices and overall movement for farmers to make daily decisions that have a positive impact on the planet. Learn more at ForwardFarmsUSA.com

CASE DIVIDER

Example



FORWARD



FARMS

Thank you!