



PETALUMA

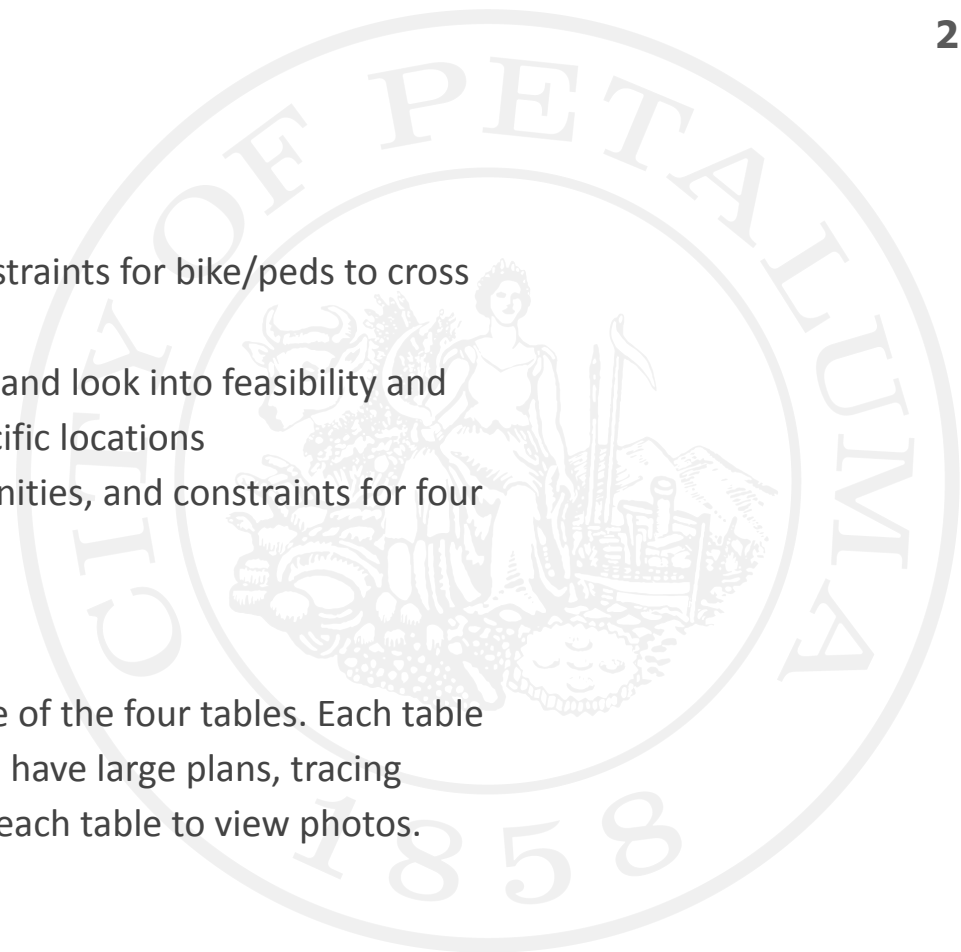


**HIGHWAY 101 PEDESTRIAN &
BICYCLE CROSSING
CONCEPT DESIGNS & IMPROVEMENTS STUDY**

Community Meeting no. 1
February 29, 2024

Meeting Agenda

1. **Introductions**
2. **Purpose of Study**
 - a. Study the issues, opportunities, and constraints for bike/peds to cross US 101 in Petaluma
 - b. Go further than planning considerations and look into feasibility and cost of actual improvements at four specific locations
3. **Presentation** summarizing the issues, opportunities, and constraints for four locations
4. **Comments and Questions** with the full group
5. **Breakout Groups**
 - a. We will invite people to visit one or more of the four tables. Each table is for one of the four study locations. We have large plans, tracing paper, post-its, markers, and a laptop at each table to view photos.



Consultant Team



SGA - 27 years specializing in ped/bike gap closure projects; completed three other Measure M Highway 101 access studies in Sonoma County



F&P - extensive experience working with Petaluma on transportation projects; currently updating the ped/bike plan



BKF - recently completed the HOV lanes project on Highway 101 in Petaluma; very familiar with Caltrans projects



LAFRANCHI & ASSOCIATES

SJLA - 32 years working on 2,400+ land development projects in the North Bay; emphasis on Petaluma



Sol Ecology - 30+ years of Bay Area experience in biological consulting and natural resource management planning

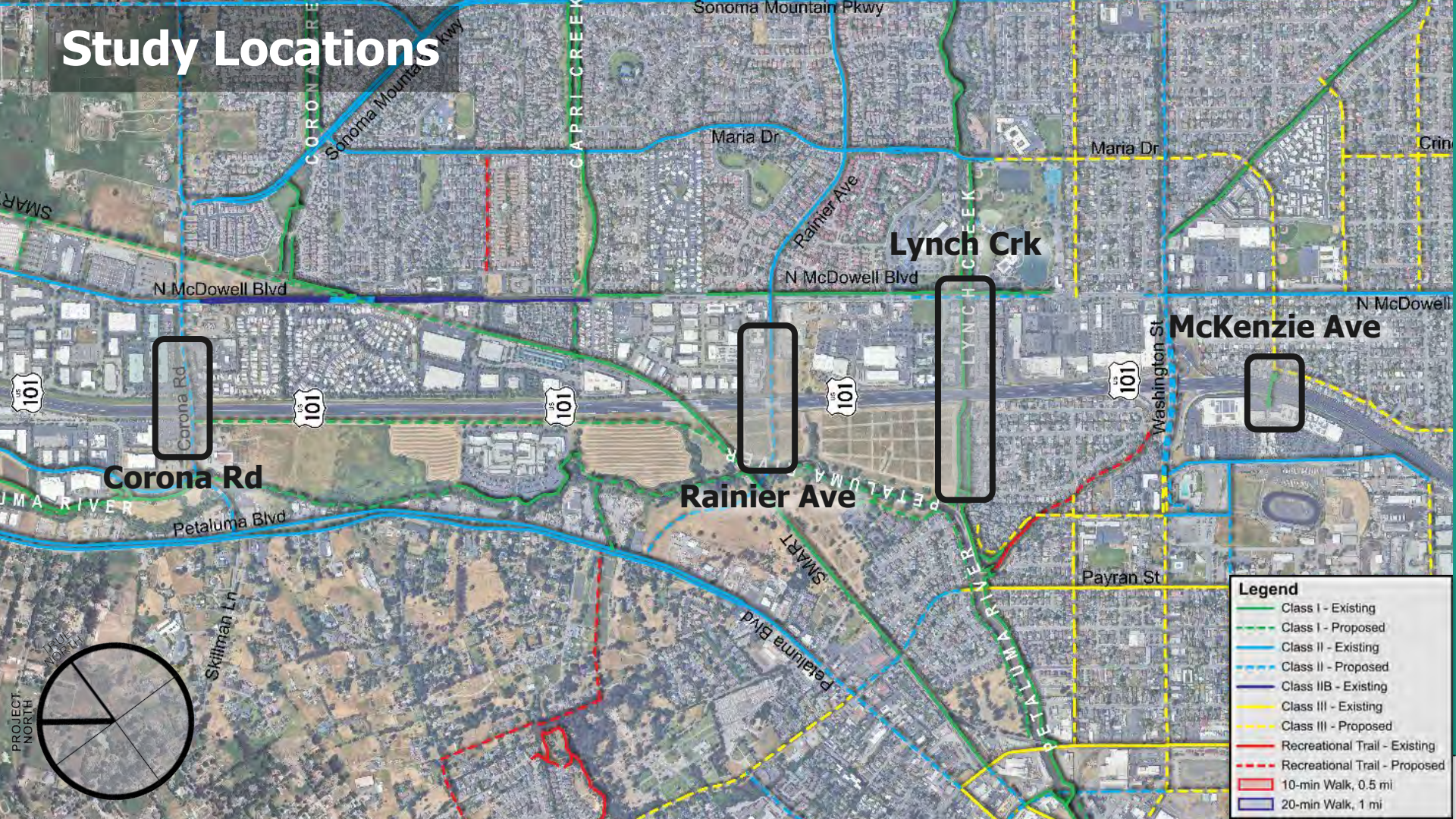


RGH - one of the largest locally-owned geotechnical engineering firms in the northern Bay Area; worked on many Petaluma projects



BCA - 38 years of niche expertise in successfully delivering signature ped/bike bridges and other structures

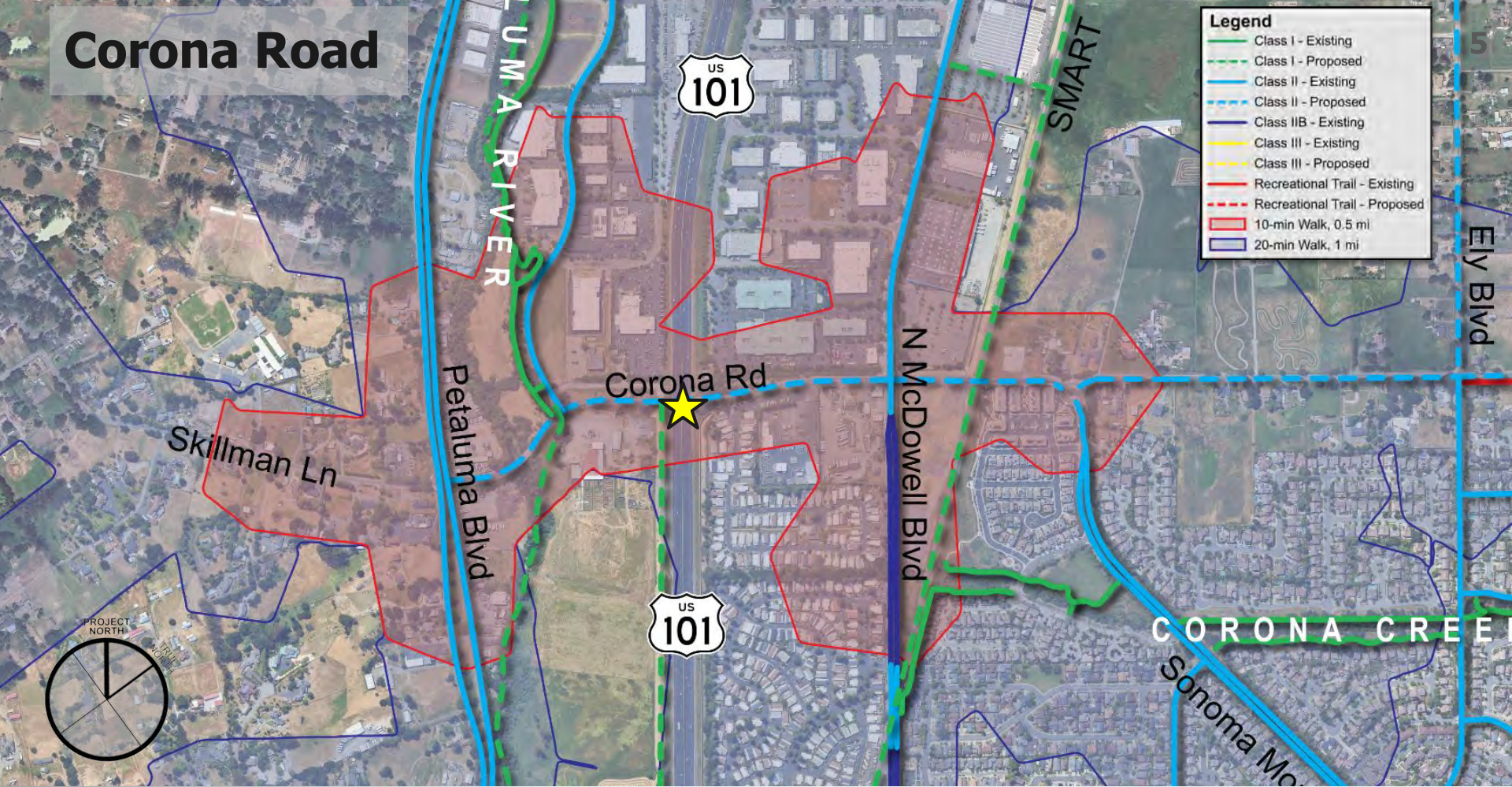
Study Locations



PROJECT NORTH



Corona Road





Ghost Bike on Corona Rd Overcrossing in Memory of Bryan Cacy





Goals & Opportunities

1. Addresses existing safety issues and gap in ped/bike network
2. Connection to future SMART station
3. Connection to future Petaluma River Trail
4. Green spaces available for approaches
5. Connection to potential pathways adjacent to Highway 101
6. Serves lots of existing and future development on east side

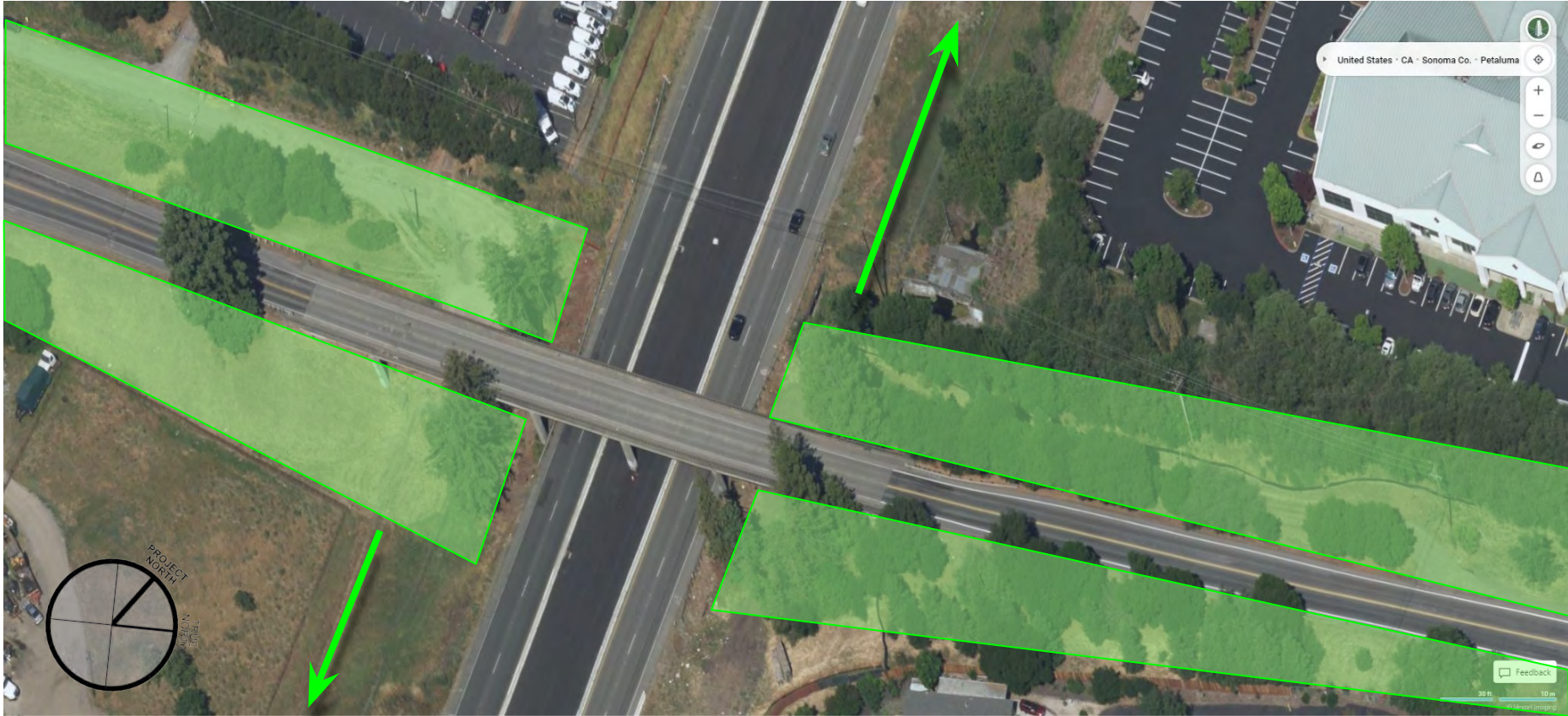
Corona Road



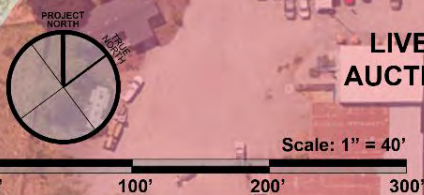
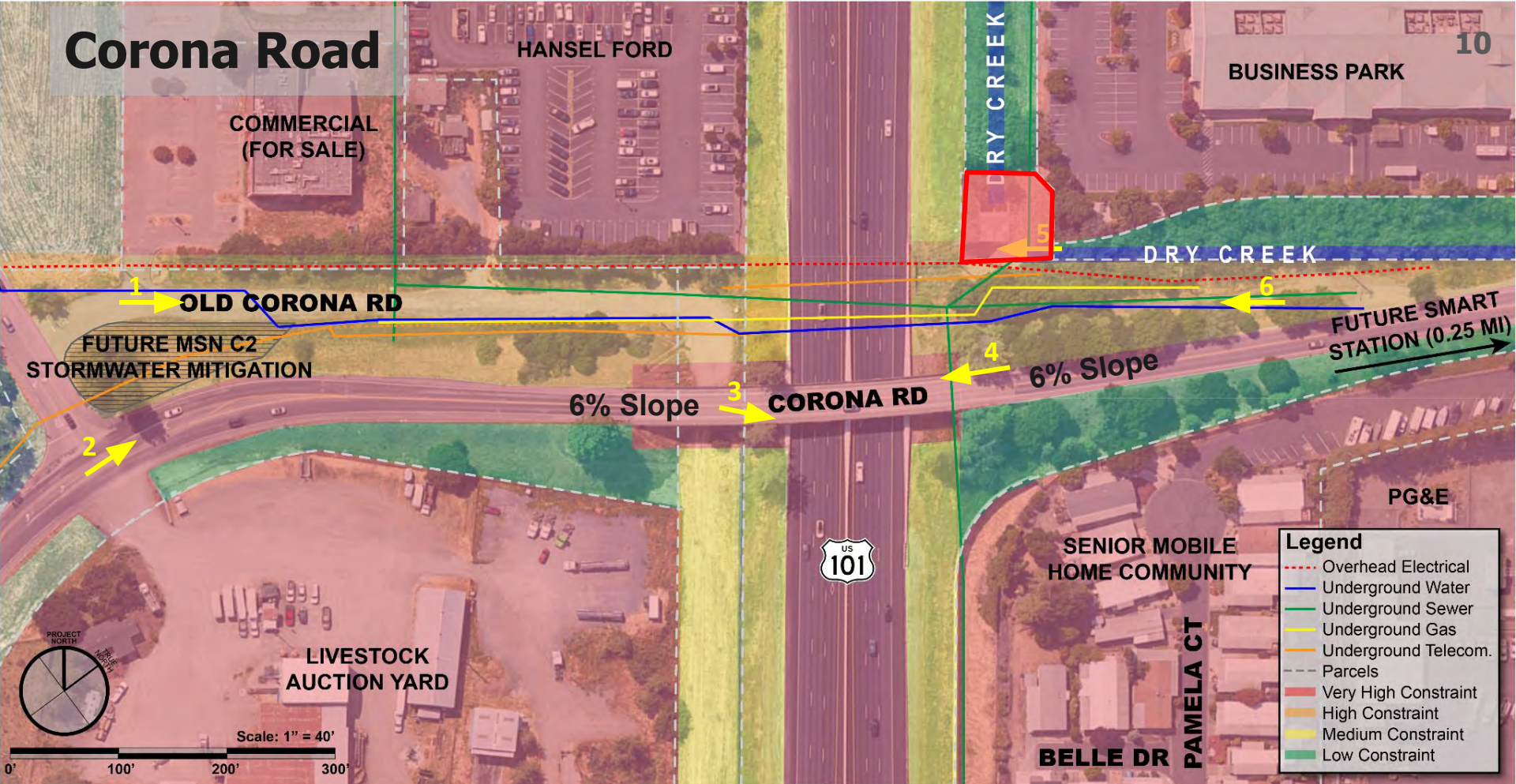
View West Along Maintenance Path



Corona Road



Corona Road



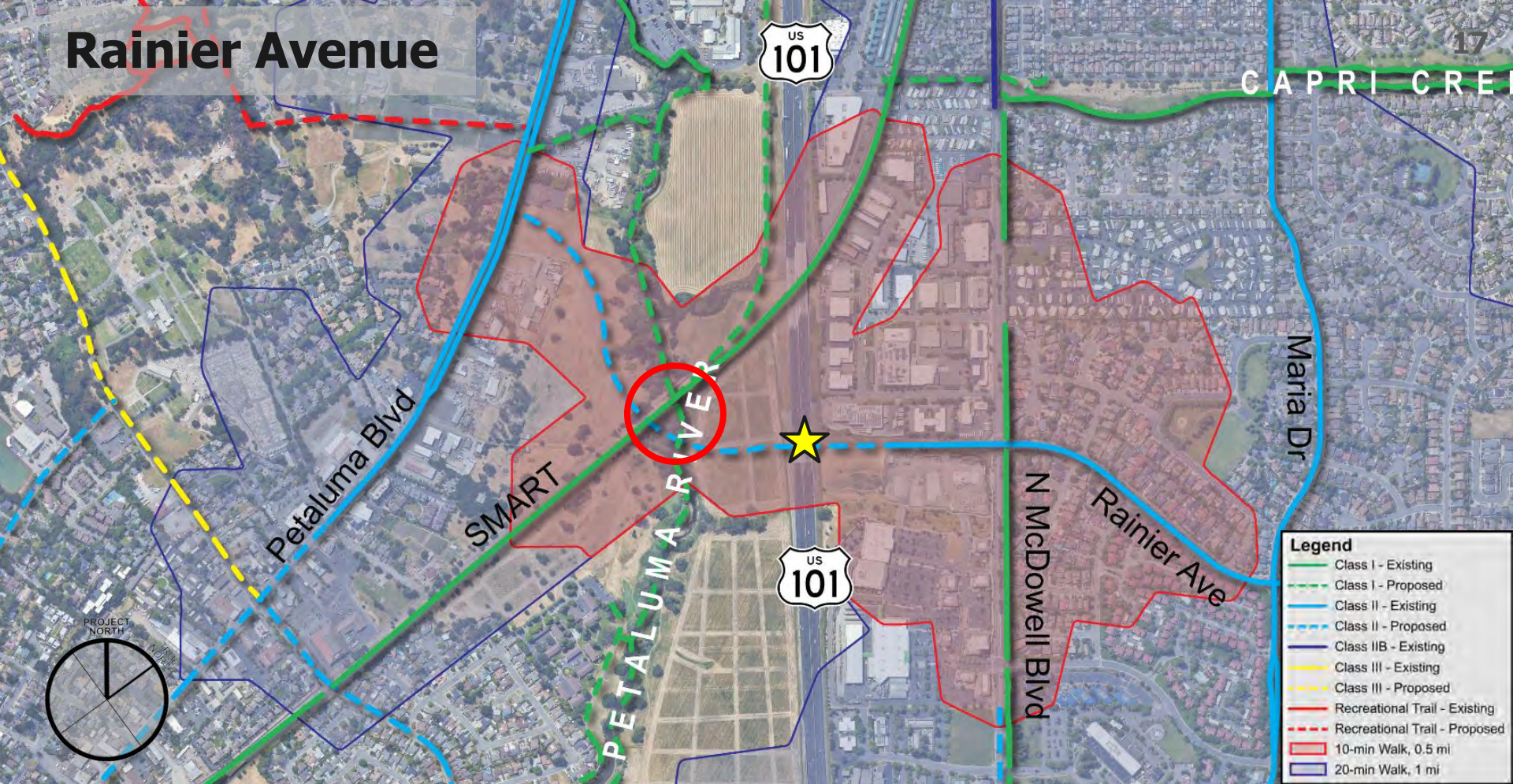
Legend	
-----	Overhead Electrical
-----	Underground Water
-----	Underground Sewer
-----	Underground Gas
-----	Underground Telecom.
-----	Parcels
-----	Very High Constraint
-----	High Constraint
-----	Medium Constraint
-----	Low Constraint



View of Drainage Structure on North Side of Corona Rd



Rainier Avenue



Legend	
	Class I - Existing
	Class I - Proposed
	Class II - Existing
	Class II - Proposed
	Class IIB - Existing
	Class III - Existing
	Class III - Proposed
	Recreational Trail - Existing
	Recreational Trail - Proposed
	10-min Walk, 0.5 mi
	20-min Walk, 1 mi



Goals & Opportunities

1. Utilization of underpass created by recent Highway 101 project
2. Connection to potential ped/bike trail hub on west side where the SMART Trail and future Petaluma River Trail and meet
3. Potential open/park space on west side



View West from East Side of Highway 101

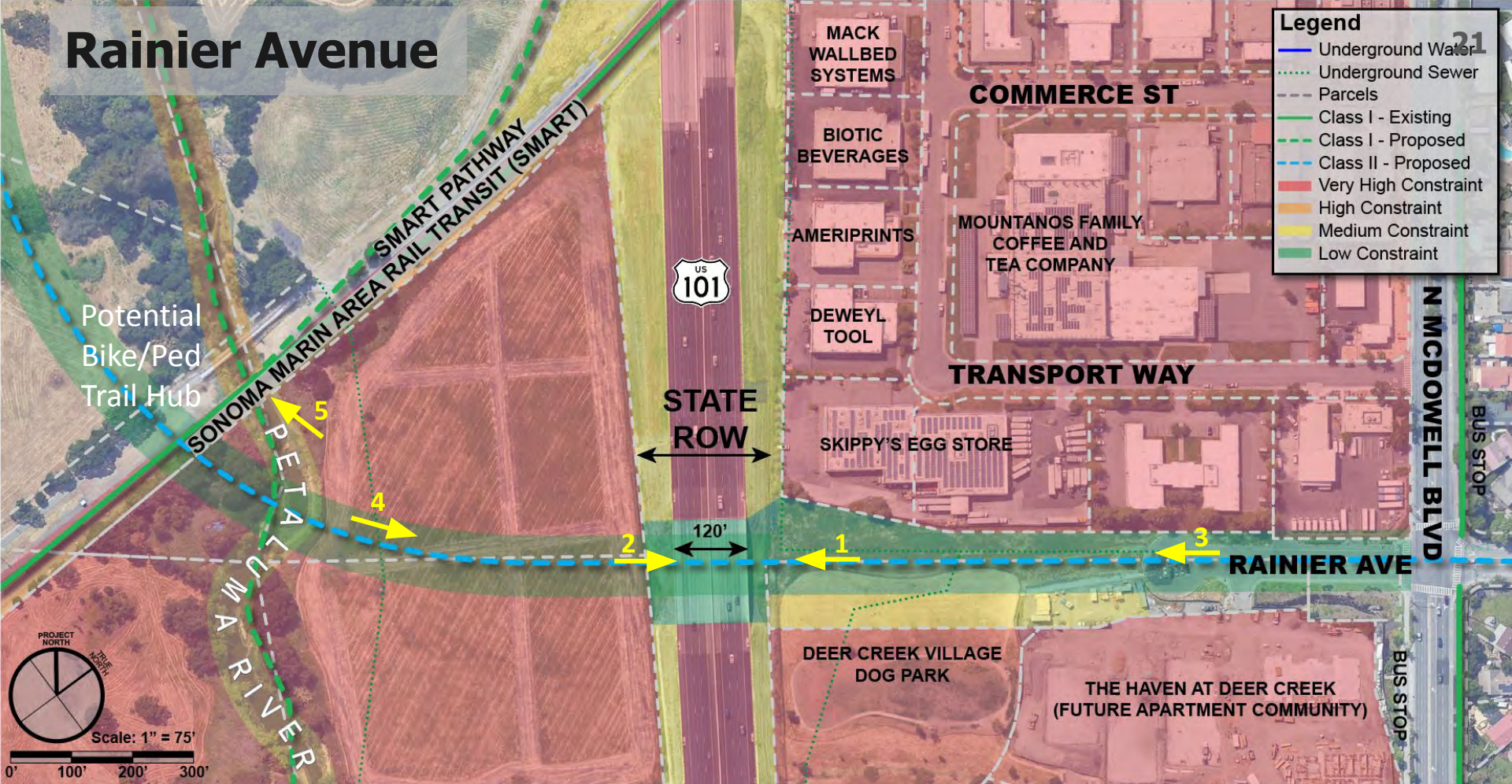




Space Under US-101 Overpass at Rainier Ave



Rainier Avenue



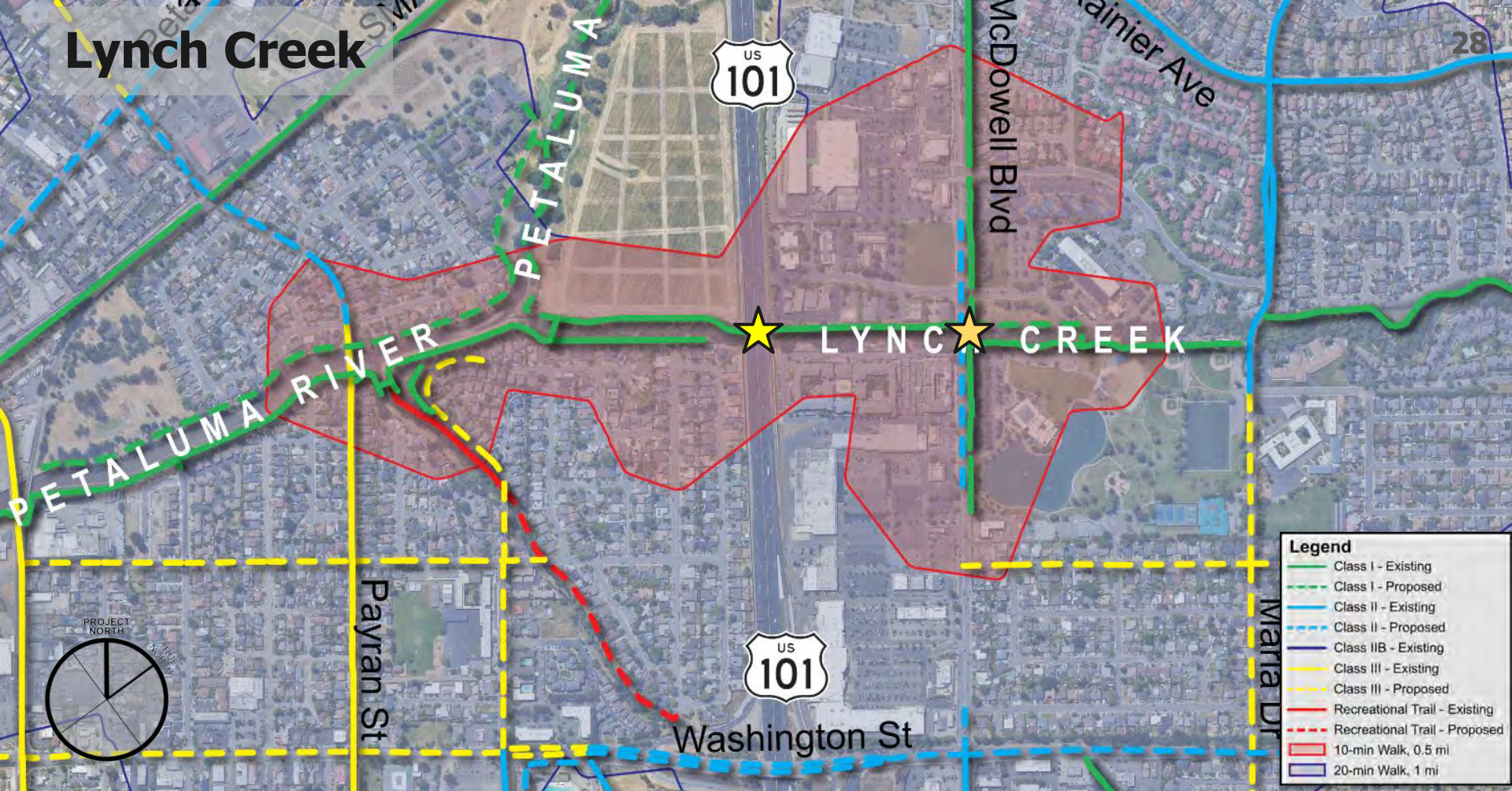
HIGHWAY 101 PED/BIKE CROSSING



Area around SMART tracks, multi-use trail bridge, and Petaluma River



Lynch Creek



Legend

- Class I - Existing
- Class I - Proposed
- Class II - Existing
- Class II - Proposed
- Class III - Existing
- Class III - Proposed
- Recreational Trail - Existing
- Recreational Trail - Proposed
- 10-min Walk, 0.5 mi
- 20-min Walk, 1 mi





View West on Lynch Creek Trail Approaching Highway 101 Undercrossing



Lynch Creek Trail



View West on Lynch Creek Trail Approaching Highway 101 Undercrossing



Lynch Creek Trail at McDowell Blvd



View West on Lynch Creek Trail at McDowell

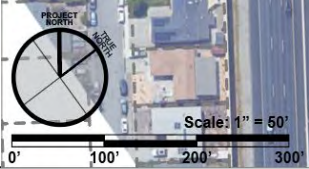
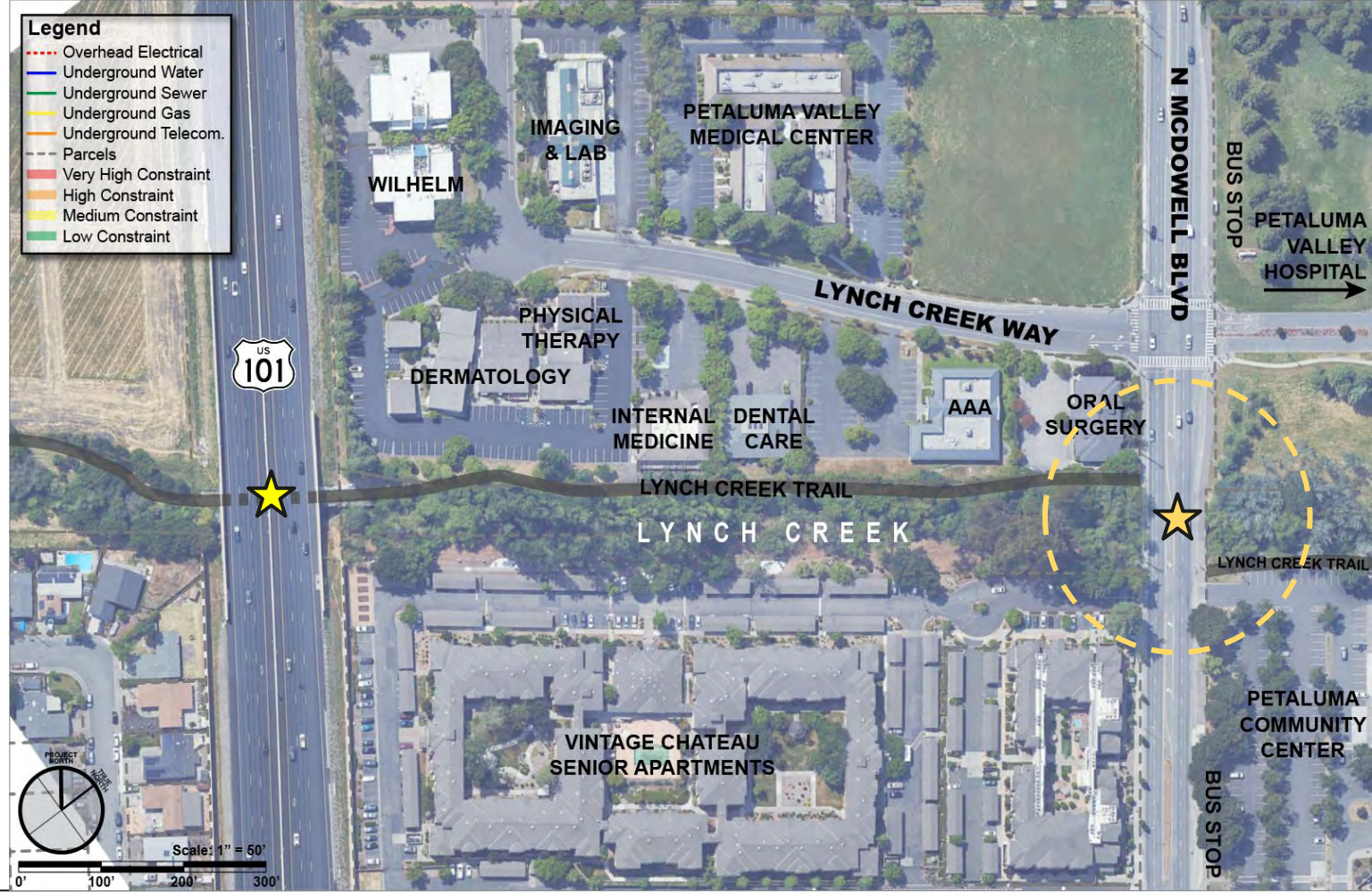




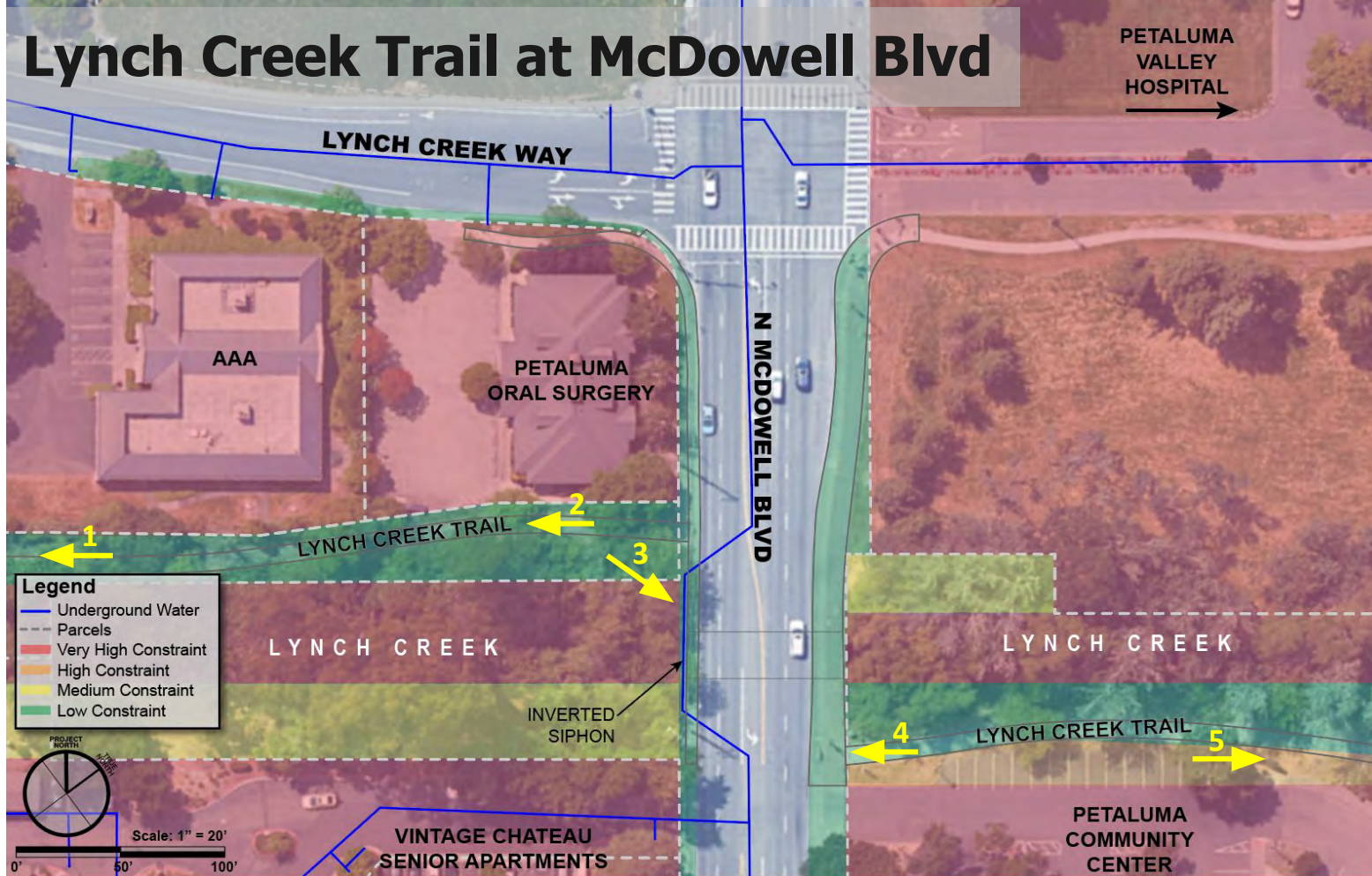
Goals & Opportunities

1. Address existing safety issue at N. McDowell Blvd
2. Improve user experience along the trail and at existing 101 underpass

- Legend**
- Overhead Electrical
 - Underground Water
 - Underground Sewer
 - Underground Gas
 - Underground Telecom.
 - Parcels
 - Very High Constraint
 - High Constraint
 - Medium Constraint
 - Low Constraint



Lynch Creek Trail at McDowell Blvd



Legend

- Underground Water
- Parcels
- Very High Constraint
- High Constraint
- Medium Constraint
- Low Constraint

PROJECT NORTH

Scale: 1" = 20'

0' 50' 100'

HIGHWAY 101 PED/BIKE CROSSING

Lynch Creek Under McDowell Blvd

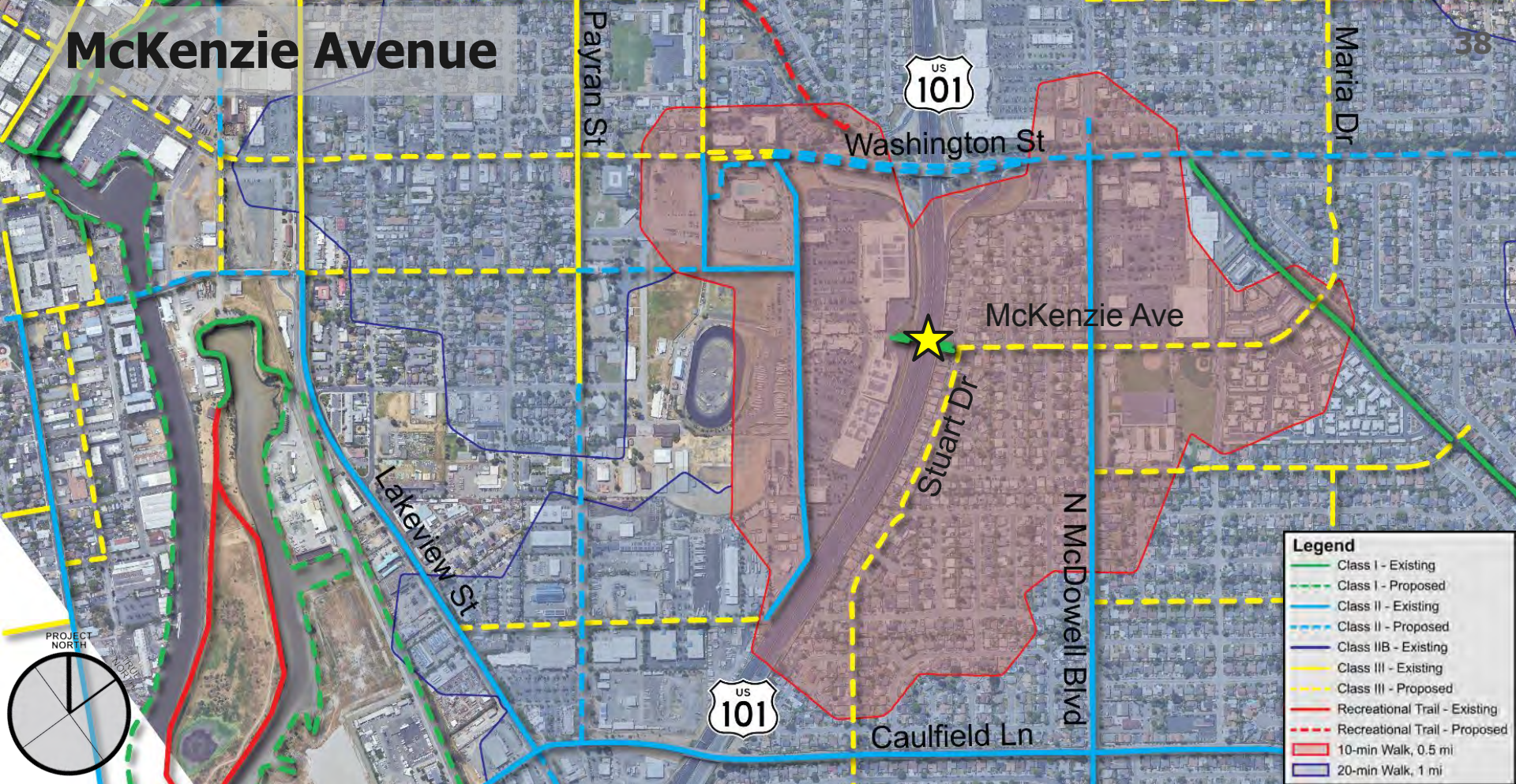


- 6.5' Vertical Clearance with Accumulated Gravel/Debris
- 12' Horizontal Clearance

Double Box Culvert Under McDowell Blvd at Lynch Creek



McKenzie Avenue



Legend	
	Class I - Existing
	Class I - Proposed
	Class II - Existing
	Class II - Proposed
	Class IIB - Existing
	Class III - Existing
	Class III - Proposed
	Recreational Trail - Existing
	Recreational Trail - Proposed
	10-min Walk, 0.5 mi
	20-min Walk, 1 mi

McKenzie Avenue



View West on McKenzie Overcrossing





View West on McKenzie Overcrossing



McKenzie Avenue



View West on McKenzie Ave at Stuart Dr

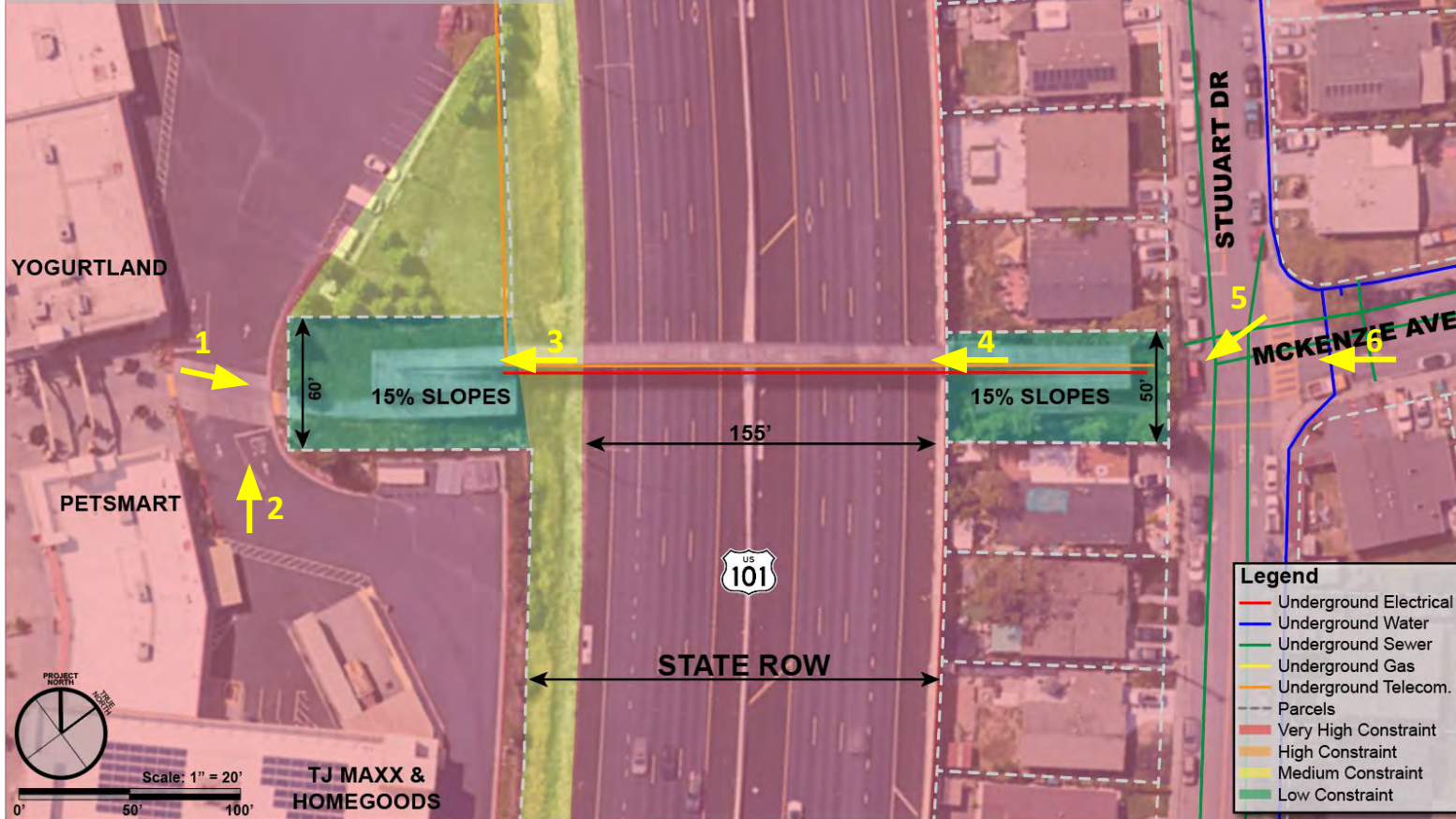


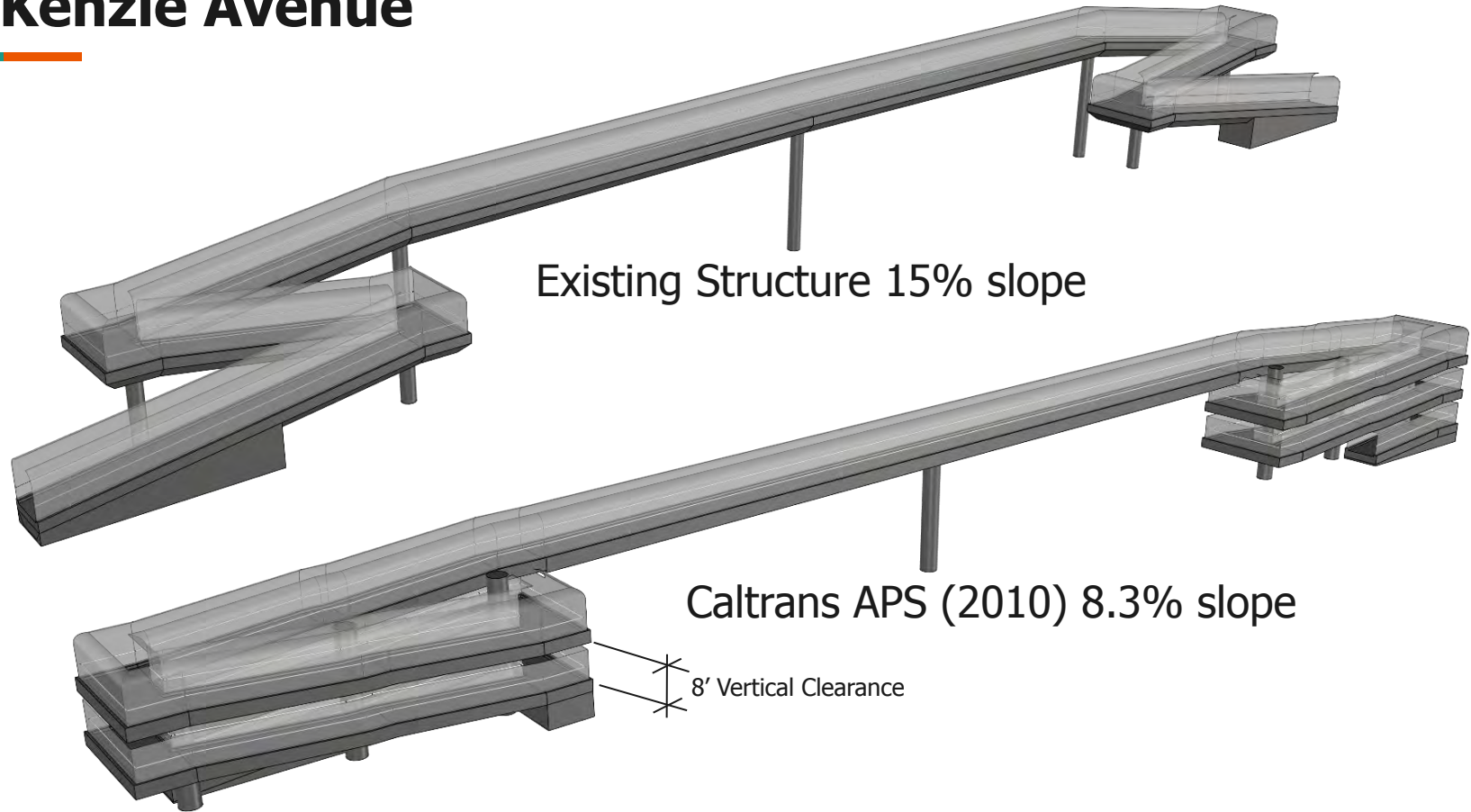


Goals & Opportunities

1. Improve safety; replace with ADA-compliant structure
2. Improve safety at touchdowns
3. Improve lighting and aesthetics
4. Improve user experience

McKenzie Avenue





Chain Link Fencing



2" Openings
(Existing Structure)



1" Openings



Thank you!

Comments & Questions?



The public input
survey is open through
March 17

Visit the Project Website to learn more:

<http://www.cityofpetaluma.org/101crossings/>
