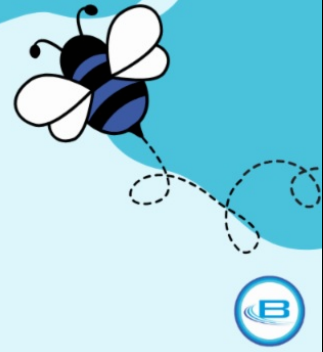




# The BAYSIDE BUZZ



## Yard Waste Collection

The next full yard waste collection will begin October 28.

- Yard waste must be out before 7am on Monday, October 28 to ensure your items will be picked up.
- Yard waste must be at least 3 feet away from mailboxes and other structures, branches must be less than 5' long, branches must be parallel to the road and cannot be in plastic bags.
- Yard waste should be placed in bags or yard waste carts if possible.
- If your pile is greater than 10' long x 5' wide x 5' high, you will need a special pick-up which can be requested [here](#).

[2024 Collection Guide](#)

[Order a Yard Waste Cart](#)

## 2024 General Election Information

**Election Day:** November 5, 2024 - Polls are open from 7am to 8pm.

**Polling Location:** 9075 N Regent Road, Bayside, WI 53217

As the November 5 General Election approaches, it's time to make sure you're ready to vote and have a plan in place. [Check your voter registration](#) and decide how you would like to vote, whether in person on Election Day, in-person absentee, or by mail

### When can I vote absentee in-person at Village Hall?

Thursday, October 24	8:00 AM – 6:00 PM
Friday, October 25	8:00 AM – 12:00 PM
Monday, October 28	8:00 AM – 4:00 PM
Tuesday, October 29	8:00 AM – 6:00 PM

### Can I still request an absentee ballot be mailed to me?

October 31 at 5pm is the deadline for regular and overseas voters to request an absentee ballot by mail. November 1 at 5pm is the deadline for indefinitely confined and military

Wednesday, October 30  
Thursday, October 31  
Friday, November 1

8:00 AM – 6:00 PM  
8:00 AM – 5:00 PM  
8:00 AM – 5:00 PM

voters who are not on active duty but are away from their voting residence to request an absentee ballot by mail.

[Vote Early In-Person](#)

[Vote Absentee by Mail](#)

### Can I still register to vote?

Now through November 1, voters must register in person at Village Hall or on Election Day. There is no in-person absentee voting or registering to vote on Monday, November 4.

[Voter Registration](#)



### My absentee ballot was mailed to me. When do I have to return it by?

All ballots must be returned to Village Hall by 8pm on Election Day, November 5.

[Voting Absentee](#)

### Drug Take Back Day

Drug Take Back Day will be held on October 26, 2024 in the Bayside Police Department Lobby from 10am to 2pm.

Bringing unused and unwanted medications to a Drug Take Back Day collection site protects you, your family, and your community.

#### Acceptable Items:

- Prescription and over-the-counter medications
- Ointments
- Sprays
- Inhalers
- Creams
- Vials
- Pet medication
- \*\* Liquids without the original packaging will not be accepted

#### Unacceptable Items:

- Needles/sharps
- Items containing bodily fluid or blood
- Personal care products
- Household hazardous waste



[Community Events](#)



## Trick-or-Treat

Calling all ghosts and goblins! Trick-or-treat will take place in the Village on Sunday, October 27 from 1-4pm.

A few reminders for a safe Trick-or-Treat:

- Children should be accompanied by a responsible adult.
- Look both ways before crossing streets.
- Motorists should drive slowly through neighborhoods and be extra vigilant to watch for children walking along roadways and crossing streets.
- Tell children not to eat any treats until they return home and an adult can check them over first.

Community Events



## Loose Leaf Collection

The next loose leaf collection will begin on November 4. Most leaves are still on the trees so we are expecting them to all fall at once, creating a very large volume for our crew to collect. Please help us make this collection go smoothly by knowing the leaf collection procedure! □

All leaves must be roadside by 7am.

*How are loose leaves collected?*

- The Village uses a leaf vacuum to collect loose leaves. Check out the [video](#) to see the vacuum in action!

*What are loose leaves?*

- Loose leaves are tree leaves. Branches and large plant leaf bundles are not loose leaves.

*How can I dispose of pumpkins?*

- Pumpkins can be put in yard waste piles, loose leaf piles, or dropped off at Village Hall in the pumpkin disposal bins from October 30 to November 30.

*Why weren't my leaves picked up?*

- Piles may not be picked up if there are other items in the leaf pile like branches, as the machine cannot suck up branches. If you bag your leaves, they will only be picked up during yard waste collection weeks. Piles must be in the road shoulder, not in the road or the ditch. Make sure your piles are not too close to objects like mailboxes or garbage carts.





## Pumpkin Disposal

You have 3 options for disposing of pumpkins this fall:

1. Place in your yard waste pile.
2. Place in your leaf pile.
3. Bring to the pumpkin disposal carts at Village Hall from October 29 to November 29.

It is important to keep organic material, such as pumpkins, out of the waste stream.

## Did You Know?

[Xtreme Raptors Day](#) is Saturday, November 2. The animal raptor festival that celebrates these powerful hunters of the sky!



## QUICK LINKS

[Access Bayside](#)

[CodeRED Emergency Notifications](#)

[Meetings and Events](#)

[myBlue](#)

[Mailbox Replacement Program](#)

[Request a Vacation Checks](#)

[Do Not Solicit List](#)

[Report a Pothole](#)

[Order a Yard Waste Cart](#)



Village Website

Access Bayside

Village of Bayside | 9075 N. Regent Road | Bayside, WI 53217 US

[Unsubscribe](#) | [Update Profile](#) | [Constant Contact Data Notice](#)



Try email marketing for free today!