

Adopt-A-Tree

Nearly 67% of Bayside is covered by tree canopy, which ranks Bayside fifth in the State. Emerald Ash Borer (EAB) is an invasive beetle spreading throughout Wisconsin and threatening our ash trees. While the Village was officially infected in March 2016 with EAB, the impacts have become much more pronounced in the past year. To maintain a diverse and resilient urban forest, the Village has:

1. Implemented the Adopt-A-Tree Program.
2. Created a 5% maximum species threshold to diversify the tree population.
3. Completed and maintained a tree inventory by a certified arborist.
4. Removed worst-rated trees based on tree inventory.
5. Removed invasive species and trimmed hazard trees.



Option 1:

PUBLIC RIGHT OF WAY TREES:

\$125

INCLUDES:

- **1 TREE**
- **PLANTING
IN RIGHT-
OF-WAY**
- **MULCHING**
- **INITIAL
WATERING**

Option 2:

PRIVATE PROPERTY TREES:

\$200

INCLUDES:

- **1 TREE**

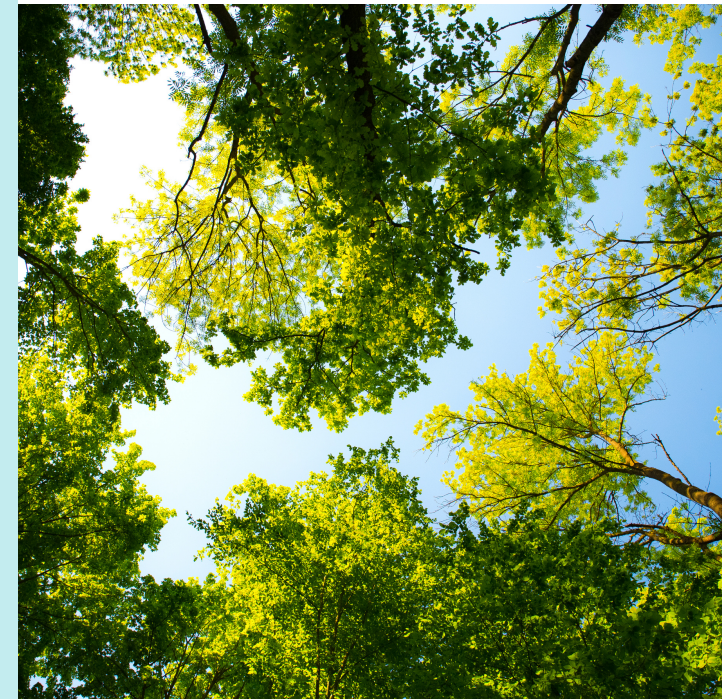
*TREES DO NOT HAVE A WARRANTY

Benefits

- Provides shade
- Reduces air and noise pollution
- Conserves water
- Reduces soil erosion
- Creates wildlife and plant diversity

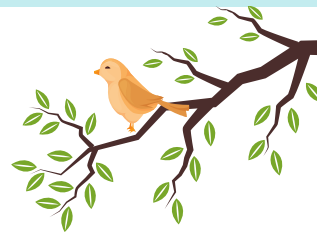


TREE CITY USA®



More Info

For more information, please visit www.baysidewi.gov or call 414-206-3915.



QUAKING ASPEN



FAST FACTS:

- 40-50 FEET TALL AT MATURITY
- 20-30 FEET WIDE AT MATURITY
- LEAVES TURN YELLOW IN FALL
- LIGHT BARK

2021 TREE SELECTION

TRIUMPH ELM



FAST FACTS:

- 50-60 FEET TALL AT MATURITY
- 35-40 FEET WIDE AT MATURITY
- LEAVES TURN YELLOW IN FALL
- ATTRACTS BIRDS

JAPANESE LILAC



FAST FACTS:

- 20-30 FEET TALL AT MATURITY
- 15-25 FEET WIDE AT MATURITY
- FRAGRANT WHITE FLOWERS
- ATTRACTS BUTTERFLIES AND HUMMINGBIRDS

SHUMARD OAK



FAST FACTS:

- 40-60 FEET TALL AT MATURITY
- 40-60 FEET WIDE AT MATURITY
- LEAVES TURN ORANGE AND RED IN FALL
- ATTRACTS BIRDS AND SMALL ANIMALS

DAWN REDWOOD



FAST FACTS:

- 70-100 FEET TALL AT MATURITY
- 25 FEET WIDE AT MATURITY
- NEEDLES TURN ORANGE AND RED IN FALL
- FAST GROWTH