

*VILLAGE OF
BAYSIDE*

2023 COLLECTION GUIDE

PUBLISHED NOVEMBER 2022

**Updated
November
17, 2023**



9075 N Regent Road
Bayside, WI 53217
(414) 206-3915
www.baysidewi.gov



LETTER TO THE COMMUNITY



November 17, 2022
Residents of Bayside,

Collections are one of the most valued services that the Village provides. In fact, in the most recent Community Survey, 86.7% of residents ranked garbage collection as the most important service and 66.7% of residents ranked recycling collection as the second most important service.

In 2021, our DPW crews spent,

- 722 hours collecting garbage,
- 419 hours collecting recycling,
- 1,072 hours collecting yard waste, and
- 159 hours collecting leaves.

During this time, our crew collected:

- 1,404 tons of garbage,
- 475 tons of recycling,
- 7,669 piles of yard waste, and
- 2,318 piles of leaves.

In addition to our normal collections, the Village will host Spring and Fall Clean Up Days, as well as Recycling Days from May through September.

Crews will perform collections on 204 out of 251 working days with 57 of those days consisting of two (2) or more types of collections in 2023. Roughly 80% of the days that crews spend working consist of collections, while still completing other responsibilities.

The Village understands the importance of collections for maintaining the appearance of the community. It is equally important to perform them efficiently and effectively. We have created this resource guide to inform, educate, and help you on the variations of each collection. We hope you find this as a useful tool to continue the efficiency of Village collections.

Respectfully,
Andrew K. Pederson
Village Manager

Table of Contents

Master Calendar.....	4
Garbage.....	5-6
Recycling.....	7-8
Yard Waste.....	9-10
Loose Leaf.....	11-12
Special/Bulk Item Pick-Up.....	13
Specialized Recycling.....	14
Special Events.....	15

2023 Collection Schedule

January						
Su	Mo	Tu	We	Th	Fr	Sa
1	2	3	4	5	6	7
8	9	10	11	12	13	14
15	16	17	18	19	20	21
22	23	24	25	26	27	28
29	30	31				

February						
Su	Mo	Tu	We	Th	Fr	Sa
			1	2	3	4
5	6	7	8	9	10	11
12	13	14	15	16	17	18
19	20	21	22	23	24	25
26	27	28				

March						
Su	Mo	Tu	We	Th	Fr	Sa
			1	2	3	4
5	6	7	8	9	10	11
12	13	14	15	16	17	18
19	20	21	22	23	24	25
26	27	28	29	30	31	

April						
Su	Mo	Tu	We	Th	Fr	Sa
						1
2	3	4	5	6	7	8
9	10	11	12	13	14	15
16	17	18	19	20	21	22
23	24	25	26	27	28	29
30						

May						
Su	Mo	Tu	We	Th	Fr	Sa
	1	2	3	4	5	6
7	8	9	10	11	12	13
14	15	16	17	18	19	20
21	22	23	24	25	26	27
28	29	30	31			

June						
Su	Mo	Tu	We	Th	Fr	Sa
				1	2	3
4	5	6	7	8	9	10
11	12	13	14	15	16	17
18	19	20	21	22	23	24
25	26	27	28	29	30	

July						
Su	Mo	Tu	We	Th	Fr	Sa
						1
2	3	4	5	6	7	8
9	10	11	12	13	14	15
16	17	18	19	20	21	22
23	24	25	26	27	28	29
30	31					

August						
Su	Mo	Tu	We	Th	Fr	Sa
		1	2	3	4	5
6	7	8	9	10	11	12
13	14	15	16	17	18	19
20	21	22	23	24	25	26
27	28	29	30	31		

September						
Su	Mo	Tu	We	Th	Fr	Sa
					1	2
3	4	5	6	7	8	9
10	11	12	13	14	15	16
17	18	19	20	21	22	23
24	25	26	27	28	29	30

October						
Su	Mo	Tu	We	Th	Fr	Sa
1	2	3	4	5	6	7
8	9	10	11	12	13	14
15	16	17	18	19	20	21
22	23	24	25	26	27	28
29	30	31				

November						
Su	Mo	Tu	We	Th	Fr	Sa
			1	2	3	4
5	6	7	8	9	10	11
12	13	14	15	16	17	18
19	20	21	22	23	24	25
26	27	28	29	30		

December						
Su	Mo	Tu	We	Th	Fr	Sa
					1	2
3	4	5	6	7	8	9
10	11	12	13	14	15	16
17	18	19	20	21	22	23
24	25	26	27	28	29	30
31						

Monday Garbage Route: Fairy Chasm and North (Includes Bayside Woods & Bayside Commons)

Tuesday Garbage Route: South of Fairy Chasm

Recycling: Fairy Chasm and North (Includes Bayside Woods and Bayside Commons)

Recycling: South of Fairy Chasm

Loose-Leaf Collection

Yard Waste

Bagged Yard Waste

Recycling Day

Clean-Up Day

Village Offices Closed

2023 Garbage Schedule

January						
Su	Mo	Tu	We	Th	Fr	Sa
1	2	3	4	5	6	7
8	9	10	11	12	13	14
15	16	17	18	19	20	21
22	23	24	25	26	27	28
29	30	31				

February						
Su	Mo	Tu	We	Th	Fr	Sa
			1	2	3	4
5	6	7	8	9	10	11
12	13	14	15	16	17	18
19	20	21	22	23	24	25
26	27	28				

March						
Su	Mo	Tu	We	Th	Fr	Sa
			1	2	3	4
5	6	7	8	9	10	11
12	13	14	15	16	17	18
19	20	21	22	23	24	25
26	27	28	29	30	31	

April						
Su	Mo	Tu	We	Th	Fr	Sa
						1
2	3	4	5	6	7	8
9	10	11	12	13	14	15
16	17	18	19	20	21	22
23	24	25	26	27	28	29
30						

May						
Su	Mo	Tu	We	Th	Fr	Sa
	1	2	3	4	5	6
7	8	9	10	11	12	13
14	15	16	17	18	19	20
21	22	23	24	25	26	27
28	29	30	31			

June						
Su	Mo	Tu	We	Th	Fr	Sa
				1	2	3
4	5	6	7	8	9	10
11	12	13	14	15	16	17
18	19	20	21	22	23	24
25	26	27	28	29	30	

July						
Su	Mo	Tu	We	Th	Fr	Sa
						1
2	3	4	5	6	7	8
9	10	11	12	13	14	15
16	17	18	19	20	21	22
23	24	25	26	27	28	29
30	31					

August						
Su	Mo	Tu	We	Th	Fr	Sa
		1	2	3	4	5
6	7	8	9	10	11	12
13	14	15	16	17	18	19
20	21	22	23	24	25	26
27	28	29	30	31		

September						
Su	Mo	Tu	We	Th	Fr	Sa
					1	2
3	4	5	6	7	8	9
10	11	12	13	14	15	16
17	18	19	20	21	22	23
24	25	26	27	28	29	30

October						
Su	Mo	Tu	We	Th	Fr	Sa
1	2	3	4	5	6	7
8	9	10	11	12	13	14
15	16	17	18	19	20	21
22	23	24	25	26	27	28
29	30	31				

November						
Su	Mo	Tu	We	Th	Fr	Sa
			1	2	3	4
5	6	7	8	9	10	11
12	13	14	15	16	17	18
19	20	21	22	23	24	25
26	27	28	29	30		

December						
Su	Mo	Tu	We	Th	Fr	Sa
					1	2
3	4	5	6	7	8	9
10	11	12	13	14	15	16
17	18	19	20	21	22	23
24	25	26	27	28	29	30
31						

Monday Garbage Route: Fairy Chasm and North (Includes Bayside Woods & Bayside Commons)

Clean-Up Day

Tuesday Garbage Route: South of Fairy Chasm

Village Offices Closed

GARBAGE

When

- Garbage is collected weekly.
 - North Route: Fairy Chasm and North (Includes Bayside Woods and Bayside Commons)
 - South Route: South of Fairy Chasm
- Carts must be out at the edge of the road by 7 a.m. on collection day.
- Carts cannot be placed at the edge of the road earlier than 5 p.m. the day before scheduled pickup.
- Carts shall be returned to the point of storage within 12 hours after pickup.
- Carts should not be stored in a location where such storage is unsightly to the surrounding view.

Resources

Garbage Collection Do's and Don'ts

Access Bayside

- Rent a cart
- Purchase a cart
- Schedule a Special Pick-Up



Instructions

- Use only Village provided brown cart(s).
- Carts out for pick up should be three (3) feet away from other carts and structures (mailboxes, etc.)
- Carts out for pick up should have handle facing the home.
- All garbage should be bagged.
- Any materials on top of or next to your cart will not be collected.
- Recyclables and yard waste are not permitted in garbage carts.
- Carts can be rented or purchased for extra garbage materials.
 - The rental fee for the first cart per week is \$40 and \$25 for each additional cart.
 - The purchase fee is \$80 plus an annual collection fee of \$103.50.
- Crews will pass by each home once. There is a \$45 fee for same day callbacks.
- If you miss your scheduled garbage day, you can request a special pick-up for a fee of \$80. See page 15 for details.
- Up-the-drive garbage/recycling pick-up can be purchased for an annual fee of \$1,202.94.
- Up-the-drive garbage/recycling collection service can be requested for a one-time pick-up fee of \$50.
- Extra garbage can be brought to Spring and Fall Clean Up Days.

2023 Recycling Schedule

January						
Su	Mo	Tu	We	Th	Fr	Sa
1	2	3	4	5	6	7
8	9	10	11	12	13	14
15	16	17	18	19	20	21
22	23	24	25	26	27	28
29	30	31				

February						
Su	Mo	Tu	We	Th	Fr	Sa
			1	2	3	4
5	6	7	8	9	10	11
12	13	14	15	16	17	18
19	20	21	22	23	24	25
26	27	28				

March						
Su	Mo	Tu	We	Th	Fr	Sa
			1	2	3	4
5	6	7	8	9	10	11
12	13	14	15	16	17	18
19	20	21	22	23	24	25
26	27	28	29	30	31	

April						
Su	Mo	Tu	We	Th	Fr	Sa
						1
2	3	4	5	6	7	8
9	10	11	12	13	14	15
16	17	18	19	20	21	22
23	24	25	26	27	28	29
30						

May						
Su	Mo	Tu	We	Th	Fr	Sa
	1	2	3	4	5	6
7	8	9	10	11	12	13
14	15	16	17	18	19	20
21	22	23	24	25	26	27
28	29	30	31			

June						
Su	Mo	Tu	We	Th	Fr	Sa
				1	2	3
4	5	6	7	8	9	10
11	12	13	14	15	16	17
18	19	20	21	22	23	24
25	26	27	28	29	30	

July						
Su	Mo	Tu	We	Th	Fr	Sa
						1
2	3	4	5	6	7	8
9	10	11	12	13	14	15
16	17	18	19	20	21	22
23	24	25	26	27	28	29
30	31					

August						
Su	Mo	Tu	We	Th	Fr	Sa
		1	2	3	4	5
6	7	8	9	10	11	12
13	14	15	16	17	18	19
20	21	22	23	24	25	26
27	28	29	30	31		

September						
Su	Mo	Tu	We	Th	Fr	Sa
					1	2
3	4	5	6	7	8	9
10	11	12	13	14	15	16
17	18	19	20	21	22	23
24	25	26	27	28	29	30

October						
Su	Mo	Tu	We	Th	Fr	Sa
1	2	3	4	5	6	7
8	9	10	11	12	13	14
15	16	17	18	19	20	21
22	23	24	25	26	27	28
29	30	31				

November						
Su	Mo	Tu	We	Th	Fr	Sa
			1	2	3	4
5	6	7	8	9	10	11
12	13	14	15	16	17	18
19	20	21	22	23	24	25
26	27	28	29	30		

December						
Su	Mo	Tu	We	Th	Fr	Sa
					1	2
3	4	5	6	7	8	9
10	11	12	13	14	15	16
17	18	19	20	21	22	23
24	25	26	27	28	29	30
31						

Recycling: Fairy Chasm and North (Includes Bayside Woods and Bayside Commons)

Recycling Day

Recycling: South of Fairy Chasm

Clean-Up Day

Village Offices Closed

RECYCLING

When

- Recycling is collected bi-weekly.
 - North Route: Fairy Chasm and North (Includes Bayside Woods and Bayside Commons)
 - South Route: South of Fairy Chasm
- Recycling carts must be out at the edge of the road by 7 a.m. on collection day.
- Carts cannot be placed at the edge of the road earlier than 5 p.m. the day before scheduled pickup.
- Carts shall be returned to the point of storage within 12 hours after pickup.
- Carts should not be stored in a location where such storage is unsightly to the surrounding view.

Resources

[Recycling Collection Do's and Don'ts](#)

[What to Recycle](#)

[Most Common Contaminants](#)

[Back to Basics](#)

[Recycling Myths](#)

[Access Bayside \(Rent, Purchase, or Schedule\)](#)



Instructions

- Use only Village provided green cart(s).
- Carts out for pick up should be three (3) feet away from other carts and structures (mailboxes, etc.)
- Recycling carts out for pick up should have handle facing the home.
- Do not place recyclables in plastic bags.
- Any materials on top of or next to your cart will not be collected.
- Carts can be rented or purchased for extra recycling materials.
 - The rental fee for the first cart per week is \$40 and \$25 for each additional cart.
 - The purchase fee is \$80. There is no annual fee.
- Crews will pass by each home once. There is a \$45 fee for same day callbacks.
- If you miss your scheduled recycling day, you can request a special pick-up for a fee of \$80. See page 15 for details.
- Up-the-drive garbage/recycling pick-up can be purchased for an annual fee of \$1,202.94.
- Up-the-drive garbage/recycling collection service can be requested for a one-time pick-up fee of \$50.
- Extra recycling can be brought to Spring and Fall Clean Up Days.
- Boxes should be broken down and containers should be rinsed and cleaned out.

2023 Yard Waste Schedule

January						
Su	Mo	Tu	We	Th	Fr	Sa
1	2	3	4	5	6	7
8	9	10	11	12	13	14
15	16	17	18	19	20	21
22	23	24	25	26	27	28
29	30	31				

February						
Su	Mo	Tu	We	Th	Fr	Sa
			1	2	3	4
5	6	7	8	9	10	11
12	13	14	15	16	17	18
19	20	21	22	23	24	25
26	27	28				

March						
Su	Mo	Tu	We	Th	Fr	Sa
			1	2	3	4
5	6	7	8	9	10	11
12	13	14	15	16	17	18
19	20	21	22	23	24	25
26	27	28	29	30	31	

April						
Su	Mo	Tu	We	Th	Fr	Sa
						1
2	3	4	5	6	7	8
9	10	11	12	13	14	15
16	17	18	19	20	21	22
23	24	25	26	27	28	29
30						

May						
Su	Mo	Tu	We	Th	Fr	Sa
	1	2	3	4	5	6
7	8	9	10	11	12	13
14	15	16	17	18	19	20
21	22	23	24	25	26	27
28	29	30	31			

June						
Su	Mo	Tu	We	Th	Fr	Sa
				1	2	3
4	5	6	7	8	9	10
11	12	13	14	15	16	17
18	19	20	21	22	23	24
25	26	27	28	29	30	

July						
Su	Mo	Tu	We	Th	Fr	Sa
						1
2	3	4	5	6	7	8
9	10	11	12	13	14	15
16	17	18	19	20	21	22
23	24	25	26	27	28	29
30	31					

August						
Su	Mo	Tu	We	Th	Fr	Sa
		1	2	3	4	5
6	7	8	9	10	11	12
13	14	15	16	17	18	19
20	21	22	23	24	25	26
27	28	29	30	31		

September						
Su	Mo	Tu	We	Th	Fr	Sa
					1	2
3	4	5	6	7	8	9
10	11	12	13	14	15	16
17	18	19	20	21	22	23
24	25	26	27	28	29	30

October						
Su	Mo	Tu	We	Th	Fr	Sa
1	2	3	4	5	6	7
8	9	10	11	12	13	14
15	16	17	18	19	20	21
22	23	24	25	26	27	28
29	30	31				

November						
Su	Mo	Tu	We	Th	Fr	Sa
			1	2	3	4
5	6	7	8	9	10	11
12	13	14	15	16	17	18
19	20	21	22	23	24	25
26	27	28	29	30		

December						
Su	Mo	Tu	We	Th	Fr	Sa
					1	2
3	4	5	6	7	8	9
10	11	12	13	14	15	16
17	18	19	20	21	22	23
24	25	26	27	28	29	30
31						

Yard Waste

Bagged Yard Waste

Recycling Day

Clean-Up Day

YARD WASTE

When

- Loose yard waste will be collected twelve (12) weeks in 2023, highlighted in **red**.
- Bagged yard waste will be collected five (5) times in 2023, highlighted in **pink**.
- Yard waste must be out by 7 a.m. the first day of collection week.
- Check the yard waste calendar for specific weeks.
- No yard waste should be stored in a location where such storage is unsightly to the surrounding view. Place yard waste roadside no earlier than three (3) days prior to pick up.

Unacceptable Items

- Grass clippings
- Thatch
- Sod
- Bricks/rocks
- Concrete
- Soil/dirt
- Contractor generated debris
- Items in plastic bags

Resources

[Yard Waste Collection Do's and Don'ts](#)

[Access Bayside \(Schedule a Special Pick-Up\)](#)

Instructions

- Place your piles and bags by the road, three (3) feet away from mailboxes and other structures.
- Branches must be less than 5' long.
- Arrange sticks parallel to the road.
- Do not put yard waste in plastic bags, garbage carts, or recycling carts.
- Do not put pet waste in yard waste piles, bags, or containers.
- Do not place yard waste on a property other than your own.
- Combine all materials into one (1) pile per property.
- Piles greater than 10' long x 5' wide x 5' high require a special pick-up. Special pick-ups can be requested through [Access Bayside](#).
- Contractor generated yard waste is not collected by the Village. Please make sure your contractor takes yard waste with them when done.
- Crews will pass by each home once. If you miss the yard waste collection, you can request a special pick-up for a fee of \$80. See page 15 for details.
- Yard waste can be dropped off on Recycling and Clean Up Days.

2023 Loose Leaf Schedule

October						
Su	Mo	Tu	We	Th	Fr	Sa
1	2	3	4	5	6	7
8	9	10	11	12	13	14
15	16	17	18	19	20	21
22	23	24	25	26	27	28
29	30	31				

November						
Su	Mo	Tu	We	Th	Fr	Sa
			1	2	3	4
5	6	7	8	9	10	11
12	13	14	15	16	17	18
19	20	21	22	23	24	25
26	27	28	29	30		

December						
Su	Mo	Tu	We	Th	Fr	Sa
					1	2
3	4	5	6	7	8	9
10	11	12	13	14	15	16
17	18	19	20	21	22	23
24	25	26	27	28	29	30
31						

Loose-Leaf Collection



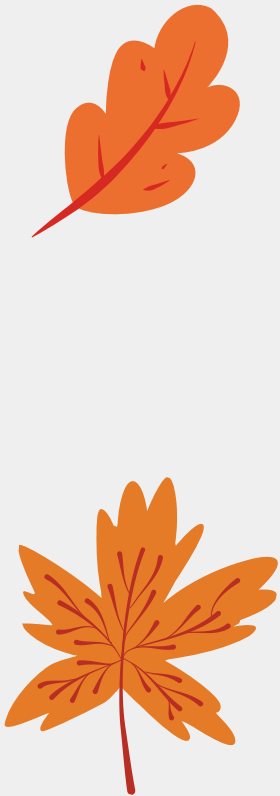
LOOSE LEAF COLLECTION

When

- Loose leaves will be collected four (4) weeks in the fall.
- Leaves must be out at the edge of the road by 7 a.m. the first day of collection week.
- Check the Loose Leaf calendar for specific weeks, highlighted in **purple**.

Resources

[Leaf Collection Do's and Don'ts](#)



Instructions

- Place all leaves in one (1) pile per property.
- Do not put other yard waste in leaf piles.
- Leaf piles should be at least three (3) feet away from mailboxes, garbage carts, and other objects.
- Loose leaves should **not** be bagged for the fall collection. They should be bagged all other times of the year.
- Leaf piles should be located roadside, not in the road, drainage ditch, or near catch basin grates.



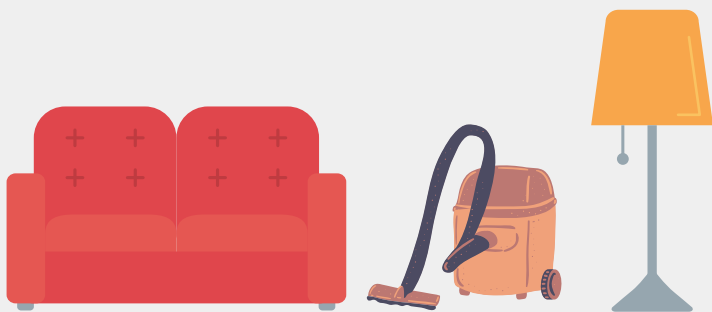
SPECIAL OR BULK ITEM PICK-UP

When

- Special Pick-Ups are available:
 - first and third Thursday of each month.
- Items must be out by 7 a.m. the day of the collection.

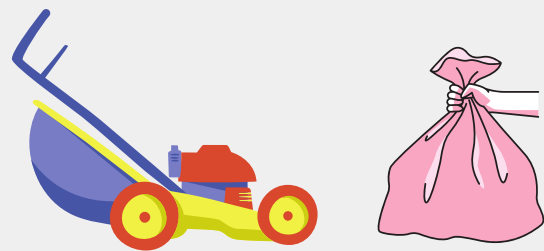
Unacceptable Items

- Refrigerators/Freezers
- Dehumidifiers
- Air conditioners
- Any item containing Freon
- Tires
- Gasoline
- Propane Gas Containers
- Lead Pipe
- Lead Based Paint
- Liquid Latex Paint
- Cooking Oils
- Asbestos
- Fertilizers
- Household Hazardous Waste
- Contractor generated waste, etc.



Instructions

- Submit a service request for a "Special Pick-Up" through [Access Bayside](#) at least 24 hours in advance of your desired special pick-up date.
- Call Village Hall to schedule a Special Pick-Up at 414-206-3915.
- There is an \$80 minimum fee which covers two (2) crew members for 20 minutes. Additional charges will occur if the pick-up takes longer than 20 minutes.
- Special Pick-Ups must be paid for prior to the pick-up.
- All items should be placed by the road in one location.
- Crews will not collect contractor generated waste.
- Yard waste piles larger than 10' long x 5' wide x 5' high require a Special Pick-Up.



HOW DO I DISPOSE OF THIS?

Item:

1. Refrigerators, Freezers, Washers, Dryers, Dishwashers, Air Conditioners, Dehumidifiers, Stoves, etc.
2. Prescription Drugs and Medications
3. Fire Extinguishers
4. Needles and Sharps
5. Computers, Printers, Fax Machines, Televisions, Keyboards, DVD Players, etc.
6. Household Hazardous Waste such as Fertilizer, Rat Poison, Paint, Lighter Fluid, Aerosols, Furniture Polish, Stains, Household Cleaners, Pesticides, etc.
7. Contractor generated waste
8. Confidential Materials/Shredding
9. Propane Tanks

Where to dispose:

1. Refrigerant Depot, LLC
5311 S. 9th St.
Milwaukee, WI 53221
(414) 627-1152
2. Village of Bayside Police Department Lobby
9075 N. Regent Rd.
(414) 206-3916
3. Milwaukee Recharging Services
5707 W. Vliet, Milwaukee, WI 53208
(414) 774-0772

Accurate Recharge & Fire
5811 N. 96th St, Milwaukee, WI 53225
(414) 464-1870
4. Visit www.safeneedledisposal.org for specific locations.
5. Various E-Cycle Wisconsin locations. Visit www.dnr.wi.gov/topic/ecycle/ for a list of locations.
6. Contact Milwaukee Metropolitan Sewerage District for locations and more accepted items. (414) 225-2065
7. Contact your contractor if they have left waste behind. They are responsible for hauling away waste.
8. Various shredding services, possibly your local bank or office supply store, may provide secure shredding services.
9. AmeriGas
6034 S. Howell Ave.
Milwaukee, WI 53207

SPECIAL EVENTS

Clean Up Days

Clean Up Days are held annually in the spring and fall from 9 a.m. to 12:00 p.m. To participate in the event, a monetary or food donation to the Hunger Task Force is required.

Clean Up Day in 2023 is:

- Saturday, April 15

Items collected include:

- Bicycles for Dream Bikes
- Cell phones
- Electronics (No refrigerators; TV/monitor fees must be paid in advance)
- Garbage
- Recycling
- Eyeglasses
- Ink cartridges
- Light bulbs
- Paint
- Scrap metal
- Yard waste
- Plastic bags
- Textiles (clothes, shoes, etc.)
- Items for Goodwill
- Items for Habitat for Humanity

Volunteers are always welcome and can call Village Hall at 414-206-3915.



Recycling Day

Recycling Days are held on the third Saturday of the month from March through November, excluding April, from 9:00 a.m. to 11:30 a.m.

Recycling Days in 2023 are:

- Saturday, March 18
- Saturday, May 20
- Saturday, June 17
- Saturday, July 15
- Saturday, August 19
- Saturday, September 16
- Saturday, October 21
- Saturday, November 18
- Wednesday, December 27 (2-5 p.m.)

Items collected include:

- Yard waste
- Recycling
- Electronics (No refrigerators; TV and monitor fees must be paid in advance)
- Scrap metal
- Plastic bags
- Light bulbs
- Ink cartridges
- Eyeglasses
- Cell phones
- Textiles (clothes, shoes, etc.)

