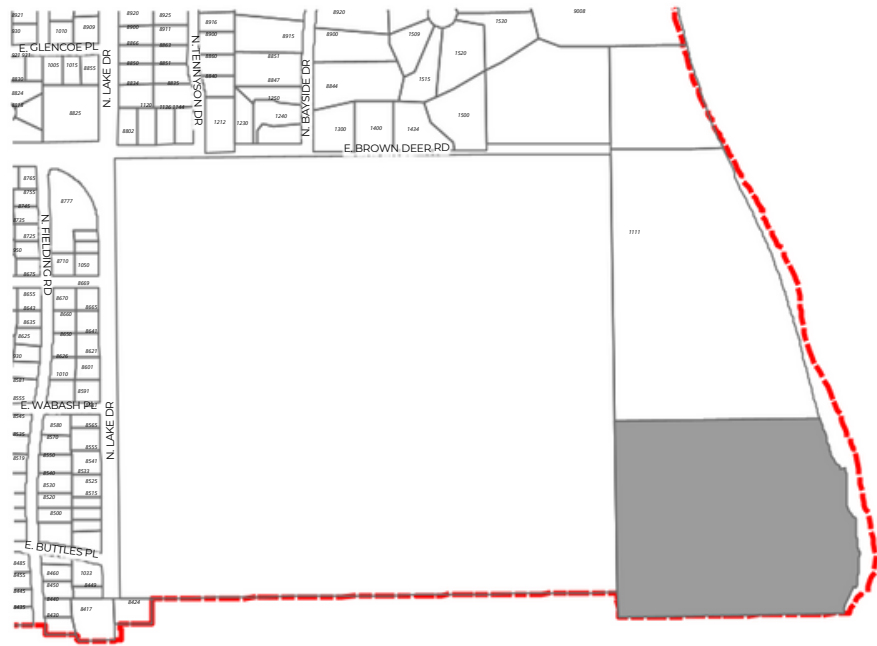





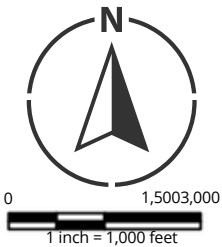
OVERALL VIEW



 Bayside Municipal Boundary

Zoning Code

 "P" Park District



UPDATED: JANUARY 2022

" P " PARK DISTRICT ZONING

Park District

Sec. 125-107

Permitted uses

- Botanical gardens and arboretums
- Exhibition halls
- Fairgrounds
- Golf courses without country club facilities
- Hiking, biking, and nature trails
- Historic monuments or sites
- Neighborhood tot lots
- Outdoor skating rinks
- Parks and playgrounds
- Picnicking areas
- Play fields or athletic fields
- Public art galleries and exhibits
- Sledding, skiing or tobogganing
- Swimming beaches
- Swimming pools
- Tennis courts
- Athletic fields

Conditional uses

- Archery ranges, boat mooring and rental, campgrounds, conservatories, driving ranges, firearm ranges, gymnasias, marinas, music halls, polo fields, riding academies, stadia, and zoological gardens.
- Golf courses with country club facilities.
- Utility substations, pumping stations, and towers, provided that the use is not less than 50 feet from any lot line.
- Increases in the height of accessory buildings, when, in the opinion of the plan commission, it is appropriate for the use and will not be detrimental to adjacent properties or the general character of the neighborhood.
- Solar energy collectors erected as an accessory structure.

Accessory uses

- Buildings accessory to the permitted use
- Roof-mounted solar collectors
- Terrestrial, telecommunications and satellite antennas

Building height: No principal building or parts of a principal building shall exceed 25 feet in height. No garage shall exceed 15 feet in height, and no shed or other accessory building shall exceed 10 feet in height

Setback and yards: No building or structure shall be erected, altered, or moved closer than 40 feet to a lot line.