

# Utility Plan

1

2

3

4

5

6

7

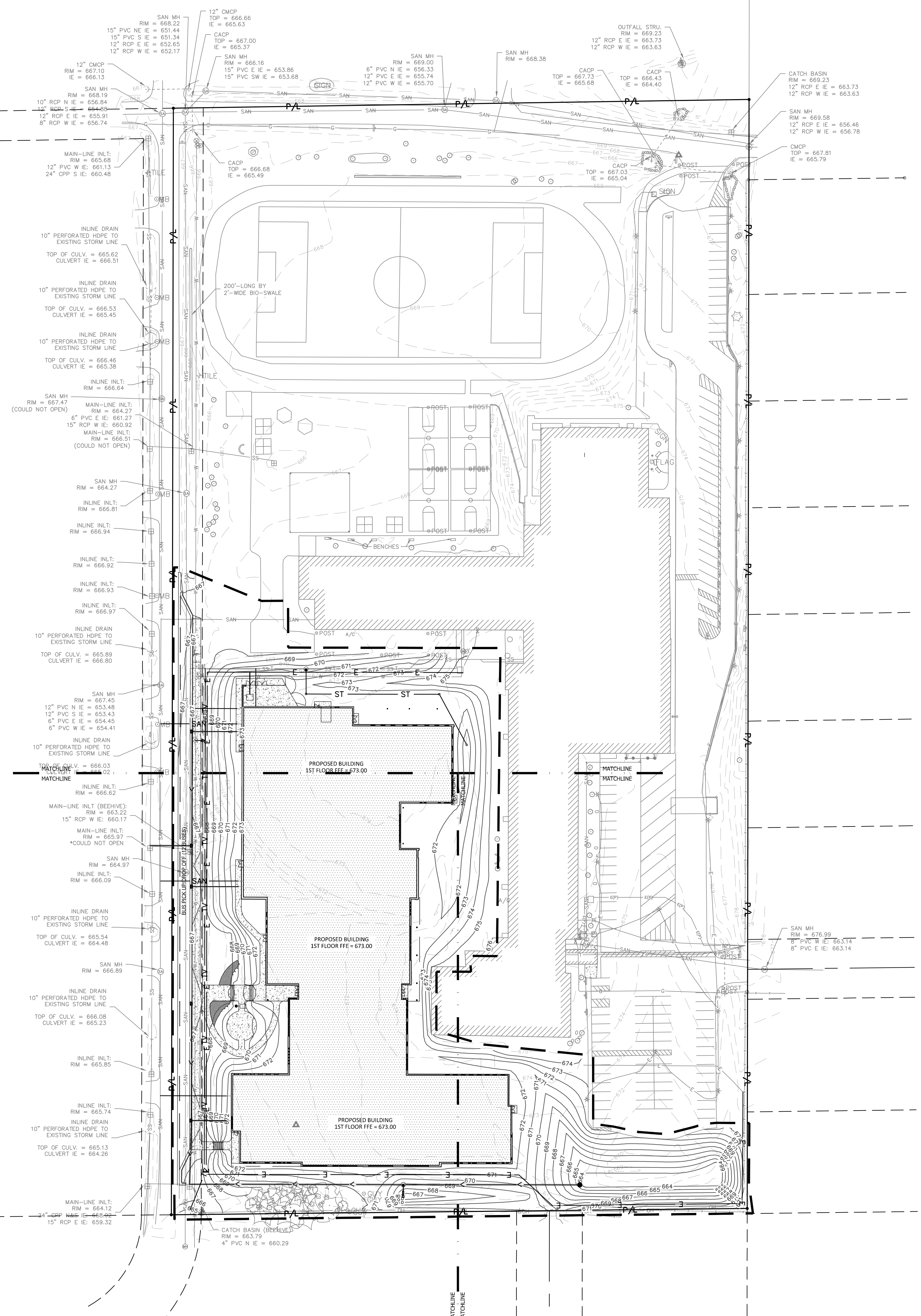
E

D

C

B

A



milwaukee 333 East Chicago Street  
Milwaukee, Wisconsin 53202  
414.271.5350

madison 309 West Johnson Street, Suite 202  
Madison, Wisconsin 53703  
608.442.2550

denver 1899 Wynkoop Street, Suite 700  
Denver, Colorado 80202  
303.566.4500

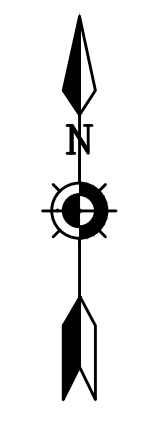
PROJECT INFORMATION

**BAYSIDE MIDDLE SCHOOL**

601 E ELLSWORTH LN, BAYSIDE, WI 53217

ISSUANCE AND REVISIONS

DATE	DESCRIPTION
1/16/2023	ARC SUBMISSION



Scale: 0 25 50 100  
Scale: 1" = 50'

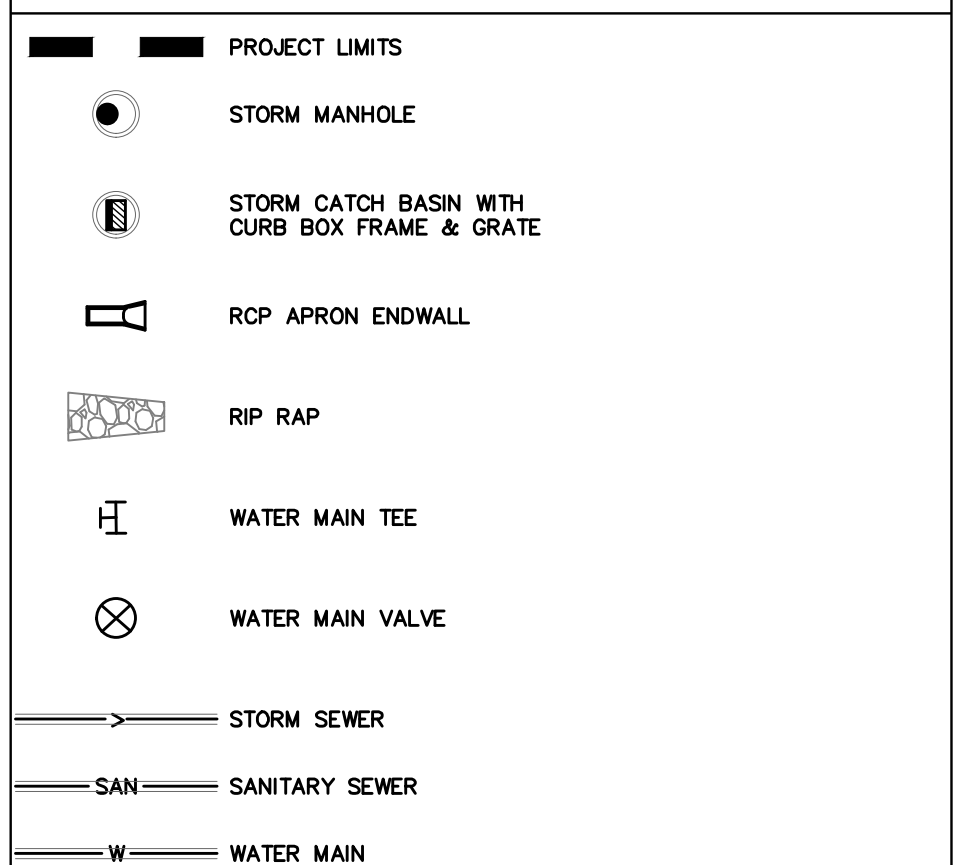


Dial 811 or (800)242-8511  
www.DiggersHotline.com

UTILITY NOTES

- KNOWN UTILITY AND POTENTIAL CONFLICT EXIST WITH EXISTING UNDERGROUND UTILITIES. PRIOR TO UTILITY INSTALLATION, CONTRACTOR TO EXCAVATE AND EXPOSE EXISTING UTILITIES, VERIFY LOCATIONS AND ELEVATIONS, AND CONTACT ENGINEER IF CONFLICTS EXIST WITH PROPOSED CONSTRUCTION AND EXISTING UNDERGROUND UTILITIES.
- PER PROJECT SPECIFICATIONS AND THE STANDARD SPECIFICATIONS FOR SEWER AND WATER CONSTRUCTION IN WISCONSIN, THE POINT OF COMMENCEMENT FOR THE LAYING OF SEWER PIPE SHALL BE AT THE LOWEST POINT IN THE PROPOSED SEWER LINE. THE PIPE SHALL BE LAD WITH THE BELL END OF THE BELL AND SPOOT PIPE, OR WITH THE RECEIVING GROOVE, END OF THE TONGUE AND GROOVE PIPE, POINTING UPGRADE. WHEN A NEW SEWER IS TO BE CONNECTED TO AN EXISTING SEWER NOT TERMINATING IN A MANHOLE, THE CONTRACTOR SHALL UNCOVER THE EXISTING SEWER TO ALLOW ANY ADJUSTMENTS IN LINE AND GRADE TO BE MADE BEFORE PIPE IS LAID.
  - THE UNDERGROUND AND OVERHEAD UTILITY INFORMATION AS SHOWN HEREON IS BASED, IN PART, UPON INFORMATION FURNISHED BY UTILITY COMPANIES, LOCAL MUNICIPALITY, PROPERTY OWNER, AND DIGGERS HOTLINE. WHILE THIS INFORMATION IS BELIEVED TO BE RELIABLE, ITS ACCURACY AND COMPLETENESS CANNOT BE GUARANTEED NOR CERTIFIED TO.
  - GENERAL CONTRACTOR OR THEIR SUB CONTRACTORS SHALL APPLY FOR AND OBTAIN ALL THEIR REQUIRED PERMITS AND APPROVALS PRIOR TO THE START OF THEIR WORK. CONSULT WITH AND OBTAIN FROM ENGINEER COPIES OF ENGINEERING DESIGN APPROVAL PERMITS, INCLUDING BUT NOT LIMITED TO: MNPR, STATE OR LOCAL PLUMBING, WDOT, COUNTY, AND STORM WATER MANAGEMENT.
  - GENERAL CONTRACTOR OR THEIR SUB CONTRACTORS SHALL CONTACT DIGGER'S HOTLINE TO ALLOW THEM SUFFICIENT TIME TO LOCATE EXISTING UTILITIES PRIOR TO COMMENCEMENT OF WORK.
  - GENERAL CONTRACTOR OR THEIR SUB CONTRACTORS ARE RESPONSIBLE FOR COORDINATING THEIR WORK WITH ALL OTHER CONTRACTORS.
  - GENERAL CONTRACTOR OR THEIR SUB CONTRACTORS ARE RESPONSIBLE FOR VERIFYING OWNERSHIP OF AND COORDINATING THE DEMOLITION AND/OR RELOCATION OF ALL EXISTING UTILITIES FROM EXISTING BUILDINGS AND WITHIN THE PROJECT LIMITS, INCLUDING BUT NOT LIMITED TO ELECTRICAL, FIBER OPTIC/TELEPHONE/CABLE/GAS/WATER/SANITARY/STORM. DEMOLITION OF THIS UTILITY WORK MUST BE IN ACCORDANCE WITH ALL STATE, FEDERAL, & LOCAL REGULATIONS.
  - FOR ALL WORK, GENERAL CONTRACTOR OR THEIR SUB CONTRACTORS ARE RESPONSIBLE FOR REVIEWING BID DOCUMENTS, VERIFYING THE VERTICAL AND HORIZONTAL LOCATION OF ALL EXISTING UTILITIES WITHIN THE PROJECT LIMITS, AND INCLUDE IN THEIR CONTRACT THE RELOCATION OF SAID UTILITIES (NOTED OR NOT ON THE BID DOCUMENTS) AS NECESSARY TO PROVIDE PROPER DEPTH/CLEARANCE PER UTILITY OWNER'S REQUIREMENTS.

KEY INDEX



KEY PLAN



7711 N. Port Washington Road  
Milwaukee, Wisconsin 53217  
kapurinc.com

SHEET INFORMATION

**PROGRESS DOCUMENTS NOT FOR CONSTRUCTION**

These documents reflect progress and intent and may be subject to change, including additional detail. These are not final construction documents and shall not be used for final bidding or construction-related purposes.

PROJECT MANAGER TS  
PROJECT NUMBER 19314-02

OVERALL SITE UTILITY PLAN - PHASE 1

**C105-1**



milwaukee 333 East Chicago Street  
Milwaukee, Wisconsin 53202  
414.271.5350

madison 309 West Johnson Street, Suite 202  
Madison, Wisconsin 53703  
608.442.2550

denver 1899 Wynkoop Street, Suite 700  
Denver, Colorado 80202  
303.566.4500

PROJECT INFORMATION  
**BAYSIDE MIDDLE SCHOOL**

601 E ELLSWORTH LN, BAYSIDE, WI 53217

ISSUANCE AND REVISIONS

DATE	DESCRIPTION
1/16/2023	ARC SUBMISSION

KEY PLAN



7711 N. Port Washington Road  
Milwaukee, Wisconsin 53217  
kapurinc.com

SHEET INFORMATION

**PROGRESS DOCUMENTS NOT FOR CONSTRUCTION**

These documents reflect progress and intent and may be subject to change, including additional details. These are not final construction documents and shall not be used for final bidding or construction-related purposes.

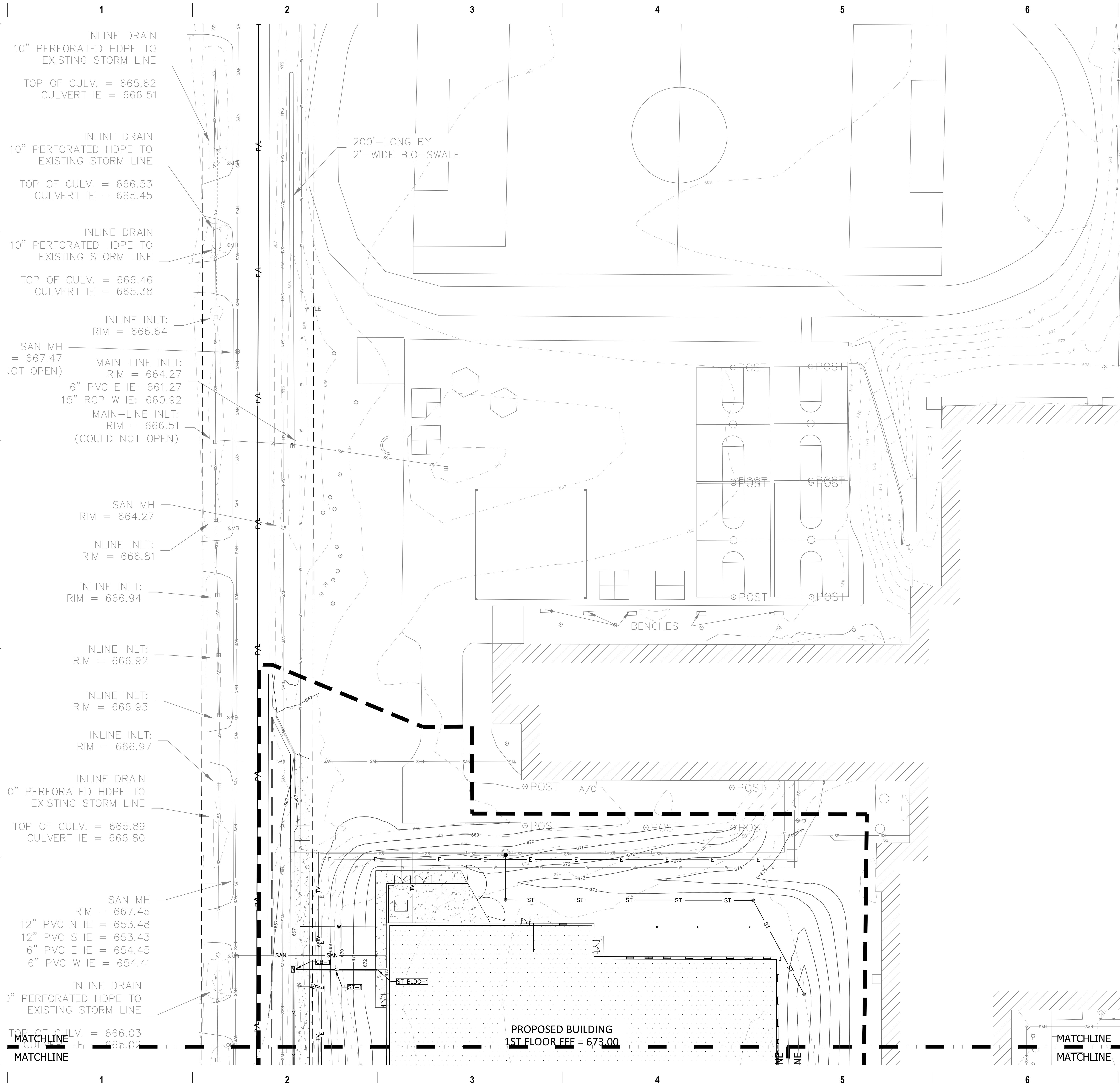
PROJECT MANAGER TS

PROJECT NUMBER 19314-02

**SITE UTILITY PLAN - PHASE 1 - AREA A**

**C105-1A**

© 2022 Epstein Uhen Architects, Inc.



Scale: 0 10 20 40  
Scale: 1" = 20'

**DIGGERS HOTLINE**  
Dial 811 or (800)242-8511  
www.DiggersHotline.com

**VICINITY MAP**

**UTILITY NOTES**

KNOWN UTILITY AND POTENTIAL CONFLICT EXIST WITH EXISTING UNDERGROUND UTILITIES. PRIOR TO UTILITY INSTALLATION, CONTRACTOR TO EXCAVATE AND EXPOSE EXISTING UTILITIES, VERIFY LOCATIONS AND ELEVATIONS, AND CONTACT ENGINEER IF CONFLICTS EXIST WITH PROPOSED CONSTRUCTION AND EXISTING UNDERGROUND UTILITIES.

- PER PROJECT SPECIFICATIONS AND THE STANDARD SPECIFICATIONS FOR SEWER AND WATER CONSTRUCTION IN WISCONSIN, THE POINT OF COMMENCEMENT FOR THE LAYING OF SEWER PIPE SHALL BE AT THE LOWEST POINT IN THE PROPOSED SEWER LINE. THE PIPE SHALL BE LAD WITH THE BELL END OF THE BELL AND SPOOT PIPE, OR WITH THE RECEIVING GROOVE END OF THE TONGUE AND GROOVE PIPE, POINTING UPGRADE. WHEN A NEW SEWER IS TO BE CONNECTED TO AN EXISTING SEWER NOT TERMINATING IN A MANHOLE, THE CONTRACTOR SHALL UNCOVER THE EXISTING SEWER TO ALLOW ANY ADJUSTMENTS IN LINE AND GRADE TO BE MADE BEFORE PIPE IS LAID.
- THE UNDERGROUND AND OVERHEAD UTILITY INFORMATION AS SHOWN HEREON IS BASED, IN PART, UPON INFORMATION FURNISHED BY UTILITY COMPANIES, LOCAL MUNICIPALITY, PROPERTY OWNER, AND DIGGERS HOTLINE. WHILE THIS INFORMATION IS BELIEVED TO BE RELIABLE, ITS ACCURACY AND COMPLETENESS CANNOT BE GUARANTEED NOR CERTIFIED TO.
- GENERAL CONTRACTOR OR THEIR SUB CONTRACTORS SHALL APPLY FOR AND OBTAIN ALL THEIR REQUIRED PERMITS AND APPROVALS PRIOR TO THE START OF THEIR WORK. CONSULT WITH AND OBTAIN FROM ENGINEER COPIES OF ENGINEERING DESIGN APPROVAL PERMITS, INCLUDING BUT NOT LIMITED TO: MNPR, STATE OR LOCAL PLUMBING, WDOT, COUNTY, AND STORM WATER MANAGEMENT.
- GENERAL CONTRACTOR OR THEIR SUB CONTRACTORS SHALL CONTACT DIGGER'S HOTLINE TO ALLOW THEM SUFFICIENT TIME TO LOCATE EXISTING UTILITIES PRIOR TO COMMENCEMENT OF WORK.
- GENERAL CONTRACTOR OR THEIR SUB CONTRACTORS ARE RESPONSIBLE FOR COORDINATING THEIR WORK WITH ALL OTHER CONTRACTORS.
- GENERAL CONTRACTOR OR THEIR SUB CONTRACTORS ARE RESPONSIBLE FOR VERIFYING OWNERSHIP OF AND COORDINATING THE DEMOLITION AND/OR RELOCATION OF ALL EXISTING UTILITIES FROM EXISTING BUILDINGS AND WITHIN THE PROJECT LIMITS, INCLUDING BUT NOT LIMITED TO ELECTRICAL, FIBER OPTIC/TELEPHONE/CABLE/GAS/WATER/SANITARY/STORM. DEMOLITION OF THIS UTILITY WORK MUST BE IN ACCORDANCE WITH ALL STATE, FEDERAL, & LOCAL REGULATIONS.
- FOR ALL WORK, GENERAL CONTRACTOR OR THEIR SUB CONTRACTORS ARE RESPONSIBLE FOR REVIEWING BID DOCUMENTS, VERIFYING THE VERTICAL AND HORIZONTAL LOCATION OF ALL EXISTING UTILITIES WITHIN THE PROJECT LIMITS, AND INCLUDE IN THEIR CONTRACT THE RELOCATION OF SAID UTILITIES (NOTED OR NOT ON THE BID DOCUMENTS) AS NECESSARY TO PROVIDE PROPER DEPTH/CLEARANCE PER UTILITY OWNER'S REQUIREMENTS.

**KEY INDEX**

- PROJECT LIMITS
- STORM MANHOLE
- STORM CATCH BASIN WITH CURB BOX FRAME & GRATE
- RCP APRON ENDWALL
- RIP RAP
- WATER MAIN TEE
- WATER MAIN VALVE
- STORM SEWER
- SAN - SANITARY SEWER
- W - WATER MAIN

TOP OF CULV. = 666.03  
CULVERT IE = 665.02

INLINE INLT:  
RIM = 666.62

MAIN-LINE INLT (BEEHIVE):  
RIM = 663.22  
15" RCP W IE: 660.17

MAIN-LINE INLT:  
RIM = 665.97  
\*COULD NOT OPEN

SAN MH  
RIM = 664.97

INLINE INLT:  
RIM = 666.09

INLINE DRAIN  
" PERFORATED HDPE TO  
EXISTING STORM LINE

TOP OF CULV. = 665.54  
CULVERT IE = 664.48

SAN MH  
RIM = 666.89

INLINE DRAIN  
PERFORATED HDPE TO  
EXISTING STORM LINE

OP OF CULV. = 666.08  
CULVERT IE = 665.23

INLINE INLT:  
RIM = 665.85

INLINE INLT:  
RIM = 665.74

INLINE DRAIN  
" PERFORATED HDPE TO  
EXISTING STORM LINE

TOP OF CULV. = 665.13  
CULVERT IE = 664.26

MAIN-LINE INLT:  
RIM = 664.12  
24" CPP N&S IE: 658.92  
15" RCP E IE: 659.32

PROPOSED BUILDING  
1ST FLOOR FFE = 673.00

PROPOSED BUILDING  
1ST FLOOR FFE = 673.00

PROPOSED BUILDING  
1ST FLOOR FFE = 673.00

CATCH BASIN (BEEHIVE)  
RIM = 663.79  
4" PVC N IE = 660.29

MATCHLINE  
MATCHLINE

MATCHLINE  
MATCHLINE

Scale: 0 10 20 40  
Scale: 1" = 20'

**DIGGERS HOTLINE**  
Dial 811 or (800)242-8511  
www.DiggersHotline.com

VICINITY MAP

UTILITY NOTES

KNOWN UTILITY AND POTENTIAL CONFLICT EXIST WITH EXISTING UNDERGROUND UTILITIES. PRIOR TO UTILITY INSTALLATION, CONTRACTOR TO EXCAVATE AND EXPOSE EXISTING UTILITIES, VERIFY LOCATIONS AND ELEVATIONS, AND CONTACT ENGINEER IF CONFLICTS EXIST WITH PROPOSED CONSTRUCTION AND EXISTING UNDERGROUND UTILITIES.

- PER PROJECT SPECIFICATIONS AND THE STANDARD SPECIFICATIONS FOR SEWER AND WATER CONSTRUCTION IN WISCONSIN, THE POINT OF COMMENCEMENT FOR THE LAYING OF SEWER PIPE SHALL BE AT THE LOWEST POINT IN THE PROPOSED SEWER LINE. THE PIPE SHALL BE LAD WITH THE BELL END OF THE BELL AND SPOOT PIPE, OR WITH THE RECEIVING GROOVE, END OF THE TONGUE AND GROOVE PIPE, POINTING UPWARD. WHEN A NEW SEWER IS TO BE CONNECTED TO AN EXISTING SEWER NOT TERMINATING IN A MANHOLE, THE CONTRACTOR SHALL UNCOVER THE EXISTING SEWER TO ALLOW ANY ADJUSTMENTS IN LINE AND GRADE TO BE MADE BEFORE PIPE IS LAID.
- THE UNDERGROUND AND OVERHEAD UTILITY INFORMATION AS SHOWN HEREON IS BASED, IN PART, UPON INFORMATION FURNISHED BY UTILITY COMPANIES, LOCAL MUNICIPALITY, PROPERTY OWNER, AND DIGGER'S HOTLINE. WHILE THIS INFORMATION IS BELIEVED TO BE RELIABLE, ITS ACCURACY AND COMPLETENESS CANNOT BE GUARANTEED NOR CERTIFIED TO.
- GENERAL CONTRACTOR OR THEIR SUB CONTRACTORS SHALL APPLY FOR AND OBTAIN ALL THEIR REQUIRED PERMITS AND APPROVALS PRIOR TO THE START OF THEIR WORK. CONSULT WITH AND OBTAIN FROM ENGINEER COPIES OF ENGINEERING DESIGN APPROVAL PERMITS, INCLUDING BUT NOT LIMITED TO WENR, STATE OR LOCAL PLUMBING, WDOT, COUNTY, AND STORM WATER MANAGEMENT.
- GENERAL CONTRACTOR OR THEIR SUB CONTRACTORS SHALL CONTACT DIGGER'S HOTLINE TO ALLOW THEM SUFFICIENT TIME TO LOCATE EXISTING UTILITIES PRIOR TO COMMENCEMENT OF WORK.
- GENERAL CONTRACTOR OR THEIR SUB CONTRACTORS ARE RESPONSIBLE FOR VERIFYING OWNERSHIP OF AND COORDINATING THE DEMOLITION AND/OR RELOCATION OF ALL EXISTING UTILITIES FROM EXISTING BUILDINGS AND WITHIN THE PROJECT LIMITS, INCLUDING BUT NOT LIMITED TO ELECTRICAL, FIBER OPTIC/TELEPHONE/CABLE/GAS/WATER/SANITARY/STORM. DEMOLITION OF THIS UTILITY WORK MUST BE IN ACCORDANCE WITH ALL STATE, FEDERAL, & LOCAL REGULATIONS.
- FOR ALL WORK, GENERAL CONTRACTOR OR THEIR SUB CONTRACTORS ARE RESPONSIBLE FOR REVIEWING BID DOCUMENTS, VERIFYING THE VERTICAL AND HORIZONTAL LOCATION OF ALL EXISTING UTILITIES WITHIN THE PROJECT LIMITS, AND INCLUDE IN THEIR CONTRACT THE RELOCATION OF SAID UTILITIES (NOTED OR NOT ON BID DOCUMENTS) AS NECESSARY TO PROVIDE PROPER DEPTH/CLEARANCE PER UTILITY OWNER'S REQUIREMENTS.

KEY INDEX

- PROJECT LIMITS
- STORM MANHOLE
- STORM CATCH BASIN WITH CURB BOX FRAME & GRATE
- RCP APRON ENDWALL
- RIP RAP
- WATER MAIN TEE
- WATER MAIN VALVE
- STORM SEWER
- SAN - SANITARY SEWER
- W - WATER MAIN

**eu.a**

milwaukee 333 East Chicago Street  
Milwaukee, Wisconsin 53202  
414.271.5350

madison 309 West Johnson Street, Suite 202  
Madison, Wisconsin 53703  
608.442.2550

denver 1899 Wynkoop Street, Suite 700  
Denver, Colorado 80202  
303.556.4500

PROJECT INFORMATION  
**BAYSIDE MIDDLE SCHOOL**

601 E ELLSWORTH LN, BAYSIDE, WI 53217

ISSUANCE AND REVISIONS

DATE	DESCRIPTION
1/16/2023	ARC SUBMISSION

KEY PLAN

**kapur**

7711 N. Port Washington Road  
Milwaukee, Wisconsin 53217  
kapurinc.com

SHEET INFORMATION

**PROGRESS DOCUMENTS NOT FOR CONSTRUCTION**

These documents reflect progress and intent and may be subject to change, including additional detail. These are not final construction documents and shall not be used for final bidding or construction-related purposes.

PROJECT MANAGER TS  
PROJECT NUMBER 19314-02  
SITE UTILITY PLAN - PHASE 1 - AREA B

**C105-1B**

© 2022 Epstein Uhen Architects, Inc.



milwaukee 333 East Chicago Street  
Milwaukee, Wisconsin 53202  
414.271.5350

madison 309 West Johnson Street, Suite 202  
Madison, Wisconsin 53703  
608.442.2550

denver 1899 Wynkoop Street, Suite 700  
Denver, Colorado 80202  
303.556.4500

PROJECT INFORMATION  
**BAYSIDE MIDDLE SCHOOL**

601 E ELLSWORTH LN, BAYSIDE, WI 53217

ISSUANCE AND REVISIONS

DATE	DESCRIPTION
1/16/2023	ARC SUBMISSION

KEY PLAN



SHEET INFORMATION

**PROGRESS DOCUMENTS NOT FOR CONSTRUCTION**

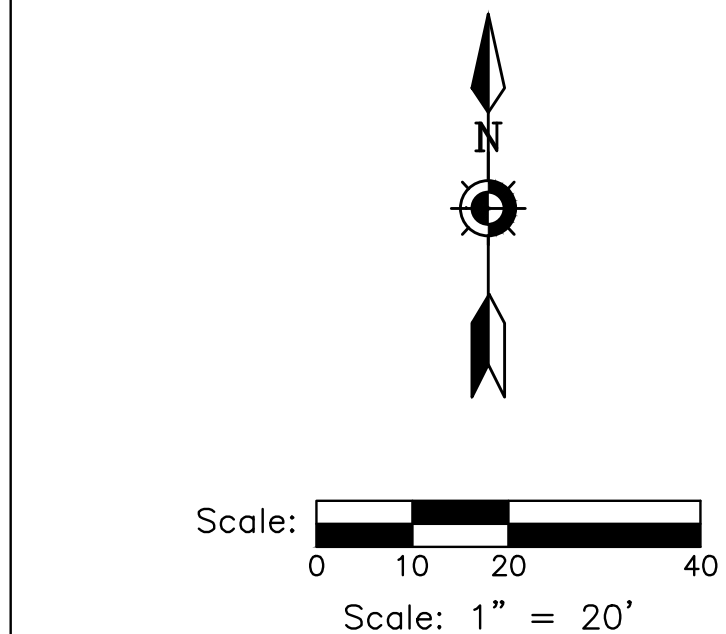
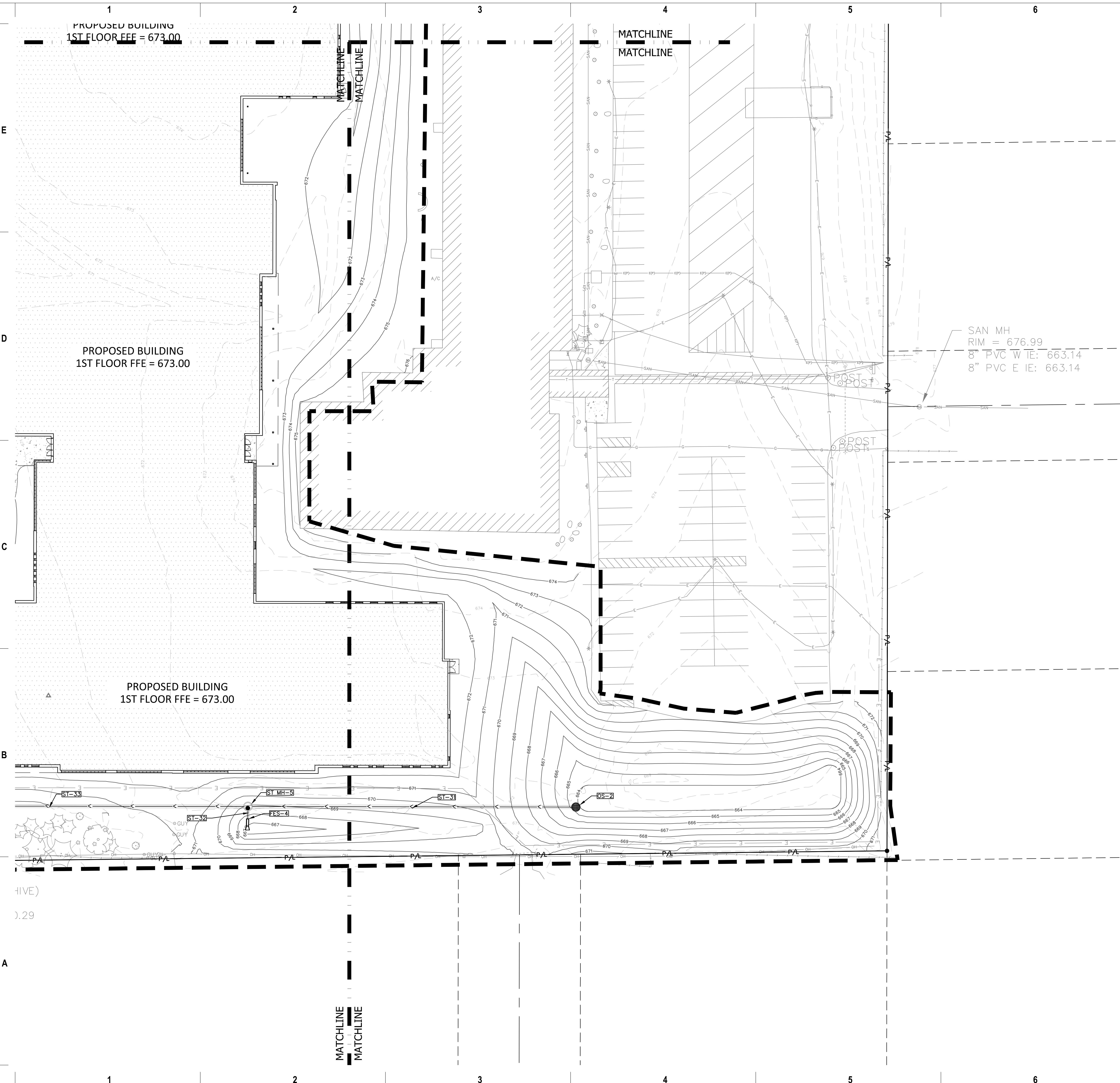
These documents reflect progress and intent and may be subject to change, including additional detail. These are not final construction documents and shall not be used for final bidding or construction-related purposes.

PROJECT MANAGER TS  
PROJECT NUMBER 19314-02

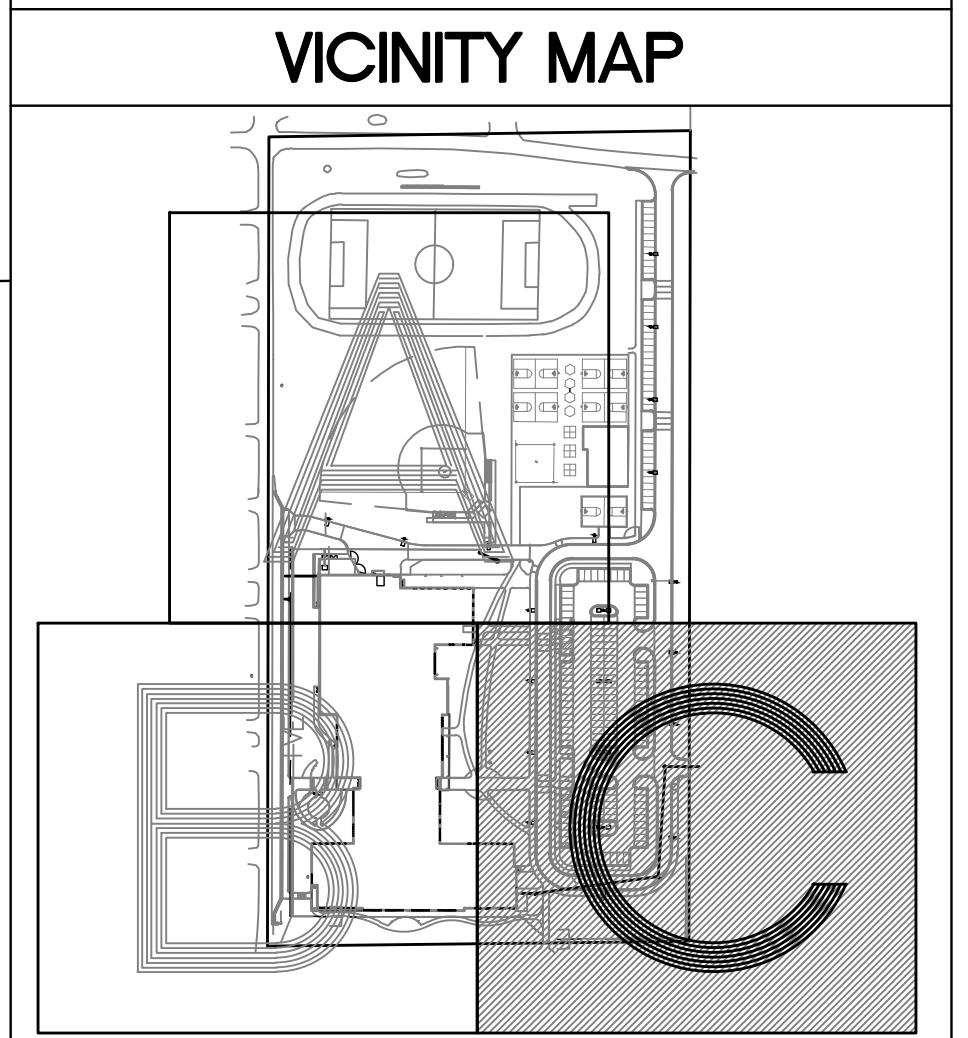
**SITE UTILITY PLAN - PHASE 1 - AREA C**

**C105-1C**

© 2022 Eppstein Uhen Architects, Inc.



**DIGGERS HOTLINE**  
Dial 811 or (800)242-8511  
www.DiggersHotline.com



- UTILITY NOTES**
- KNOWN UTILITY AND POTENTIAL CONFLICT EXIST WITH EXISTING UNDERGROUND UTILITIES. PRIOR TO UTILITY INSTALLATION, CONTRACTOR TO EXCAVATE AND EXPOSE EXISTING UTILITIES, VERIFY LOCATIONS AND ELEVATIONS, AND CONTACT ENGINEER IF CONFLICTS EXIST WITH PROPOSED CONSTRUCTION AND EXISTING UNDERGROUND UTILITIES.
- PER PROJECT SPECIFICATIONS AND THE STANDARD SPECIFICATIONS FOR SEWER AND WATER CONSTRUCTION IN WISCONSIN, THE POINT OF COMMENCEMENT FOR THE LAYING OF SEWER PIPE SHALL BE AT THE LOWEST POINT IN THE PROPOSED SEWER LINE. THE PIPE SHALL BE LAD WITH THE BELL END OF THE BELL AND SPIGOT PIPE, OR WITH THE RECEIVING GROOVE, END OF THE TONGUE AND GROOVE PIPE, POINTING UPGRADE. WHEN A NEW SEWER IS TO BE CONNECTED TO AN EXISTING SEWER NOT TERMINATING IN A MANHOLE, THE CONTRACTOR SHALL UNCOVER THE EXISTING SEWER TO ALLOW ANY ADJUSTMENTS IN LINE AND GRADE TO BE MADE BEFORE PIPE IS LAID.
  - THE UNDERGROUND AND OVERHEAD UTILITY INFORMATION AS SHOWN HEREON IS BASED, IN PART, UPON INFORMATION FURNISHED BY UTILITY COMPANIES, LOCAL MUNICIPALITY, PROPERTY OWNER, AND DIGGERS HOTLINE. WHILE THIS INFORMATION IS BELIEVED TO BE RELIABLE, ITS ACCURACY AND COMPLETENESS CANNOT BE GUARANTEED NOR CERTIFIED TO.
  - GENERAL CONTRACTOR OR THEIR SUB CONTRACTORS SHALL APPLY FOR AND OBTAIN ALL THEIR REQUIRED PERMITS AND APPROVALS PRIOR TO THE START OF THEIR WORK. CONSULT WITH AND OBTAIN FROM ENGINEER COPIES OF ENGINEERING DESIGN APPROVAL PERMITS, INCLUDING BUT NOT LIMITED TO: WDNR, STATE OR LOCAL PLUMBING, WDOT, COUNTY, AND STORM WATER MANAGEMENT.
  - GENERAL CONTRACTOR OR THEIR SUB CONTRACTORS SHALL CONTACT DIGGER'S HOTLINE TO ALLOW THEM SUFFICIENT TIME TO LOCATE EXISTING UTILITIES PRIOR TO COMMENCEMENT OF WORK.
  - GENERAL CONTRACTOR OR THEIR SUB CONTRACTORS ARE RESPONSIBLE FOR COORDINATING THEIR WORK WITH ALL OTHER CONTRACTORS.
  - GENERAL CONTRACTOR OR THEIR SUB CONTRACTORS ARE RESPONSIBLE FOR VERIFYING OWNERSHIP OF AND COORDINATING THE DEMOLITION AND/OR RELOCATION OF ALL EXISTING UTILITIES FROM EXISTING BUILDINGS AND WITHIN THE PROJECT LIMITS, INCLUDING BUT NOT LIMITED TO ELECTRICAL, FIBER OPTIC/TELEPHONE/CABLE/GAS/WATER/SANITARY/STORM. DEMOLITION OF THIS UTILITY WORK MUST BE IN ACCORDANCE WITH ALL STATE, FEDERAL, & LOCAL REGULATIONS.
  - FOR ALL WORK, GENERAL CONTRACTOR OR THEIR SUB CONTRACTORS ARE RESPONSIBLE FOR REVIEWING BID DOCUMENTS, VERIFYING THE VERTICAL AND HORIZONTAL LOCATION OF ALL EXISTING UTILITIES WITHIN THE PROJECT LIMITS, AND INCLUDE IN THEIR CONTRACT THE RELOCATION OF SAID UTILITIES (NOTED OR NOT ON THE BID DOCUMENTS) AS NECESSARY TO PROVIDE PROPER DEPTH/CLEARANCE PER UTILITY OWNER'S REQUIREMENTS.

**KEY INDEX**

	PROJECT LIMITS
	STORM MANHOLE
	STORM CATCH BASIN WITH CURB BOX FRAME & GRATE
	RCP APRON ENDWALL
	RIP RAP
	WATER MAIN TEE
	WATER MAIN VALVE
	STORM SEWER
	SANITARY SEWER
	WATER MAIN



milwaukee 333 East Chicago Street  
Milwaukee, Wisconsin 53202  
414.271.5330

madison 309 West Johnson Street, Suite 202  
Madison, Wisconsin 53703  
608.442.2590

denver 1899 Wynkoop Street, Suite 700  
Denver, Colorado 80202  
303.586.4500

**PROJECT INFORMATION**

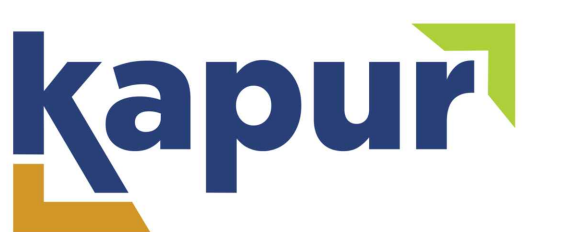
**BAYSIDE MIDDLE SCHOOL**

**601 E ELLSWORTH LN, BAYSIDE, WI 53217**

**ISSUANCE AND REVISIONS**

DATE	DESCRIPTION
1/16/2023	ARC SUBMISSION

**KEY PLAN**



**7711 N. Port Washington Road  
Milwaukee, Wisconsin 53217**  
kapurinc.com

**SHEET INFORMATION**

**PROGRESS DOCUMENTS NOT FOR CONSTRUCTION**

These documents reflect progress and intent and may be subject to change, including additional detail. These are not final construction documents and shall not be used for final bidding or construction-related purposes.

PROJECT MANAGER TS

PROJECT NUMBER 19314-02

**SITE UTILITY TABLES**

**C105T**

© 2022 Eppstein Uhen Architects, Inc.

STORM SEWER STRUCTURE TABLE					
STRUCTURE NAME:	TYPE (FRAME AND GRATE):	RIM ELEVATION:	PIPES IN:	PIPES OUT	BOTTOM:
CB-1	2' X 3' RECTANGULAR (R-3067)	666.53	ST-1, 10" E INV = 663.53	ST-2, 12" S INV = 663.43	663.43
CB-2	2' X 3' RECTANGULAR (R-3067)	666.28	ST-3, 10" E INV = 663.28	ST-4, 12" N INV = 663.18	663.18
CB-3	2' X 3' RECTANGULAR (R-3067)	666.33	ST-2, 12" N INV = 662.28 ST-4, 12" S INV = 662.77	ST-5, 15" W INV = 662.03	662.03
CB-4	2' X 3' RECTANGULAR (R-3067)	666.31		ST-6, 12" S INV = 663.31	663.31
CB-5	2' X 3' RECTANGULAR (R-3067)	666.31	ST-6, 12" N INV = 662.14 ST-7, 12" E INV = 663.31	ST-8, 15" S INV = 661.89	661.89
CB-6	2' X 3' RECTANGULAR (R-3067)	669.99		ST-9, 12" E INV = 666.76	666.76
CB-7	48" DIAMETER (R-3067)	669.88	ST-9, 12" W INV = 666.63	ST-10, 15" E INV = 666.63	666.63
CB-8	18" NYLOPLAST DRAIN (1899CGS)	672.53		ST-12, 8" E INV = 669.78	669.78
CB-9	18" NYLOPLAST DRAIN (1899CGS)	671.81	ST-12, 8" W INV = 669.44	ST-13, 8" S INV = 669.34	669.34
CB-10	18" NYLOPLAST DRAIN (1899CGS)	672.69		ST-14, 8" E INV = 671.00	671.00
CB-11	18" NYLOPLAST DRAIN (1899CGS)	671.79	ST-13, 8" N INV = 668.70 ST-14, 8" W INV = 670.41	ST-15, 8" E INV = 667.41	667.41
CB-12	48" DIAMETER (R-3067)	674.52		ST-16, 12" W INV = 671.00	669.50
CB-13	18" NYLOPLAST DRAIN (1899CGS)	672.22		ST-18, 8" E INV = 668.03	668.03
CB-14	18" NYLOPLAST DRAIN (1899CGS)	670.86	ST-18, 8" W INV = 667.44	ST-19, 8" E INV = 667.34	667.34
CB-15	2' X 3' RECTANGULAR (R-3067)	669.26	ST-19, 8" W INV = 666.91	ST-20, 12" E INV = 666.58	666.58
CB-16	48" DIAMETER (R-3067)	669.68	ST-20, 12" W INV = 666.45	ST-21, 15" E INV = 666.20	666.20
CB-17	18" NYLOPLAST DRAIN (1899CGS)	671.34		ST-23, 8" E INV = 667.03	667.03
CB-18	2' X 3' RECTANGULAR (R-3067)	669.27	ST-23, 8" W INV = 666.60	ST-24, 12" E INV = 666.27	666.27
CB-19	48" DIAMETER (R-3067)	669.48	ST-24, 12" W INV = 666.14	ST-25, 15" E INV = 665.89	665.89
CB-20	48" DIAMETER (R-2502-D)	669.46	ST-27, 12" SE INV = 666.46	ST-28, 12" N INV = 666.46	664.96
CB-21	48" DIAMETER (R-2502-D)	667.39	ST-28, 12" S INV = 665.41	ST-29, 15" W INV = 665.16	663.66
EX ST INLT-1	N/A	665.97	ST-5, 15" E INV = 661.61 EX ST, 24" N INV =	EX ST, 24" S INV =	
EX ST INLT-2	N/A	663.79	ST-8, 15" N INV = 660.50 ST-33, 15" E INV = 659.94	EX ST, 15" W INV =	
EX ST INLT-3	N/A	664.27	ST-30, 15" E INV = 660.92	EX ST, 15" W INV = 660.92	
FES-1	24" RCP APRON ENDWALL		ST-26, 24" N INV = 664.00		
FES-2	12" RCP APRON ENDWALL			ST-27, 12" NW INV = 669.84	
FES-3	15" RCP APRON ENDWALL		ST-29, 15" E INV = 663.49		
FES-4	12" RCP APRON ENDWALL			ST-32, 12" N INV = 666.22	
OS-1	48" OUTLET STRUCTURE			ST-30, 15" W INV = 661.00	659.50
OS-2	48" OUTLET STRUCTURE			ST-31, 18" W INV = 662.00	660.50
ST BLDG-1	N/A			ST-1, 10" W INV = 665.78	
ST BLDG-2	N/A			ST-3, 10" W INV = 665.61	
ST BLDG-3	N/A			ST-7, 12" W INV = 665.06	
ST MH-1	48" DIAMETER (R-1661)	670.65	ST-10, 15" W INV = 666.48	ST-11, 15" S INV = 666.48	666.48
ST MH-2	48" DIAMETER (R-1661)	671.58	ST-11, 15" N INV = 665.97 ST-15, 8" W INV = 666.55 ST-16, 12" E INV = 668.03	ST-17, 18" S INV = 665.72	665.72
ST MH-3	48" DIAMETER (R-1661)	670.70	ST-17, 18" N INV = 665.43 ST-21, 15" W INV = 665.90	ST-22, 24" S INV = 664.93	664.93
ST MH-4	60" DIAMETER (R-1661)	667.08	ST-25, 15" W INV = 665.99 ST-22, 24" N INV = 664.64	ST-26, 24" S INV = 664.54	
ST MH-5	48" DIAMETER (R-1661)	669.72	ST-32, 12" S INV = 666.15 ST-31, 18" E INV = 661.11	ST-33, 15" W INV = 661.01	661.01

STORM SEWER PIPE TABLE								
PIPE NAME:	FROM:	TO:	UPSTREAM INVERT ELEVATION:	DOWNSTREAM INVERT ELEVATION:	LENGTH:	SLOPE:	SIZE AND MATERIAL:	GPM:
ST-1	ST BLDG-1	CB-1	665.78	663.53	45.03'	5.00%	10" SDR 35 PVC PIPE	
ST-2	CB-1	CB-3	663.43	662.28	114.57'	1.00%	12" SMOOTH INTERIOR WALL HDPE PIPE	
ST-3	ST BLDG-2	CB-2	665.61	663.28	46.70'	5.00%	10" SDR 35 PVC PIPE	
ST-4	CB-2	CB-3	663.18	662.77	40.98'	1.00%	12" SMOOTH INTERIOR WALL HDPE PIPE	
ST-5	CB-3	EX ST INLT-1	662.03	661.61	41.99'	1.00%	15" CLASS IV RCP	
ST-6	CB-4	CB-5	663.31	662.14	117.39'	1.00%	12" SMOOTH INTERIOR WALL HDPE PIPE	
ST-7	ST BLDG-3	CB-5	665.06	663.31	35.00'	5.00%	12" SDR 35 PVC PIPE	
ST-8	CB-5	EX ST INLT-2	661.89	660.50	63.86'	2.18%	15" CLASS IV RCP	
ST-9	CB-6	CB-7	666.76	666.63	13.00'	1.00%	12" SMOOTH INTERIOR WALL HDPE PIPE	
ST-10	CB-7	ST MH-1	666.63	666.48	30.00'	0.50%	15" SMOOTH INTERIOR WALL HDPE PIPE	
ST-11	ST MH-1	ST MH-2	666.48	665.97	101.80'	0.50%	15" SMOOTH INTERIOR WALL HDPE PIPE	
ST-12	CB-8	CB-9	669.78	669.44	34.33'	1.00%	8" SDR 35 PVC PIPE	
ST-13	CB-9	CB-11	669.34	668.70	63.99'	1.00%	8" SDR 35 PVC PIPE	
ST-14	CB-10	CB-11	671.00	670.41	58.67'	1.00%	8" SDR 35 PVC PIPE	
ST-15	CB-11	ST MH-2	667.41	666.55	86.14'	1.00%	8" SDR 35 PVC PIPE	
ST-16	CB-12	ST MH-2	671.00	668.03	99.00'	3.00%	12" SMOOTH INTERIOR WALL HDPE PIPE	
ST-17	ST MH-2	ST MH-3	665.72	665.43	117.14'	0.25%	18" SMOOTH INTERIOR WALL HDPE PIPE	
ST-18	CB-13	CB-14	668.03	667.44	58.73'	1.00%	8" SDR 35 PVC PIPE	
ST-19	CB-14	CB-15	667.34	666.91	43.08'	1.00%	8" SDR 35 PVC PIPE	
ST-20	CB-15	CB-16	666.58	666.45	13.00'	1.00%	12" SMOOTH INTERIOR WALL HDPE PIPE	
ST-21	CB-16	ST MH-3	666.20	665.90	30.00'	1.00%	15" SMOOTH INTERIOR WALL HDPE PIPE	
ST-22	ST MH-3	ST MH-4	664.93	664.64	114.06'	0.25%	24" SMOOTH INTERIOR WALL HDPE PIPE	
ST-23	CB-17	CB-18	667.03	666.60	43.02'	1.00%	8" SDR 35 PVC PIPE	
ST-24	CB-18	CB-19	666.27	666.14	13.00'	1.00%	12" SMOOTH INTERIOR WALL HDPE PIPE	
ST-25	CB-19	ST MH-4	665.89	665.59	30.00'	1.00%	15" SMOOTH INTERIOR WALL HDPE PIPE	
ST-26	ST MH-4	FES-1	664.54	664.00	113.06'	0.48%	24" CLASS IV RCP	
ST-27	FES-2	CB-20	669.84	666.46	46.77'	7.23%	12" CLASS IV RCP	
ST-28	CB-20	CB-21	666.46	665.41	210.24'	0.50%	12" SMOOTH INTERIOR WALL HDPE PIPE	
ST-29	CB-21	FES-3	665.16	663.49	165.16'	1.01%	15" CLASS IV RCP	
ST-30	OS-1	EX ST INLT-3	661.00	660.92	28.33'	0.28%	15" CLASS IV RCP	
ST-31	OS-2	ST MH-5	662.00	661.11	177.12'	0.50%	18" SMOOTH INTERIOR WALL HDPE PIPE	
ST-32	FES-4	ST MH-5	666.22	666.15	6.78'	1.00%	12" CLASS IV RCP	
ST-33	ST MH-5	EX ST INLT-2	661.01	659.94	214.58'	0.50%	15" CLASS IV RCP	



milwaukee 333 East Chicago Street  
Milwaukee, Wisconsin 53202  
414.271.5350

madison 309 West Johnson Street, Suite 202  
Madison, Wisconsin 53703  
608.442.2550

denver 1899 Wynkoop Street, Suite 700  
Denver, Colorado 80202  
303.556.4500

PROJECT INFORMATION

**BAYSIDE MIDDLE SCHOOL**

601 E ELLSWORTH LN, BAYSIDE, WI 53217

ISSUANCE AND REVISIONS

DATE	DESCRIPTION
1/16/2023	ARC SUBMISSION

KEY PLAN



SHEET INFORMATION

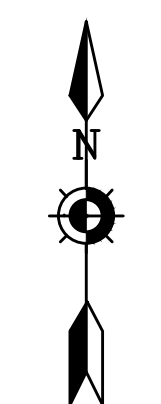
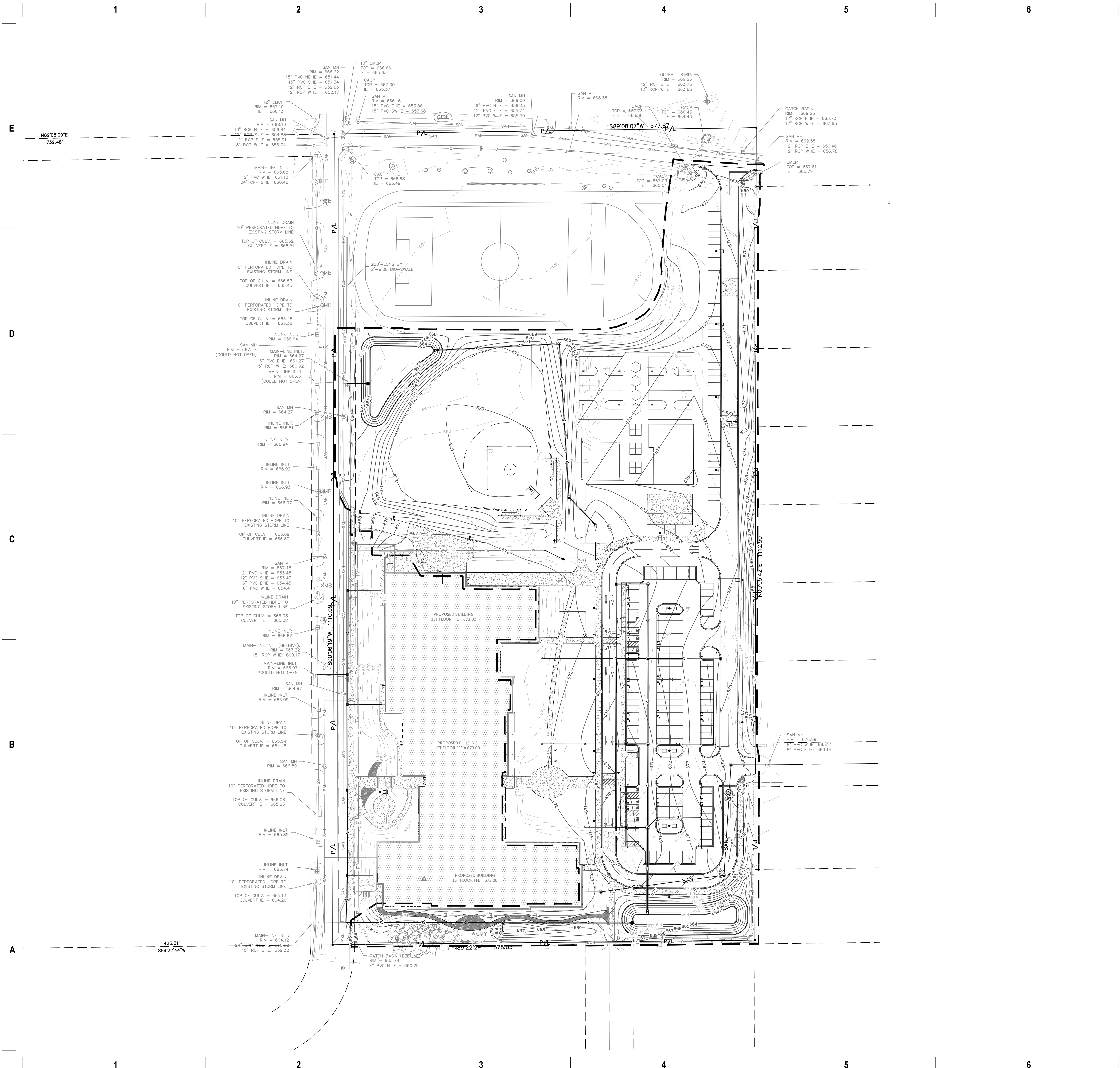
**PROGRESS DOCUMENTS NOT FOR CONSTRUCTION**

These documents reflect progress and intent and may be subject to change, including additional detail. These are not final construction documents and shall not be used for final bidding or construction-related purposes.

PROJECT MANAGER TS  
PROJECT NUMBER 19314-02

OVERALL SITE UTILITY PLAN - PHASE 2

**C105-2**



Scale: 1" = 50'

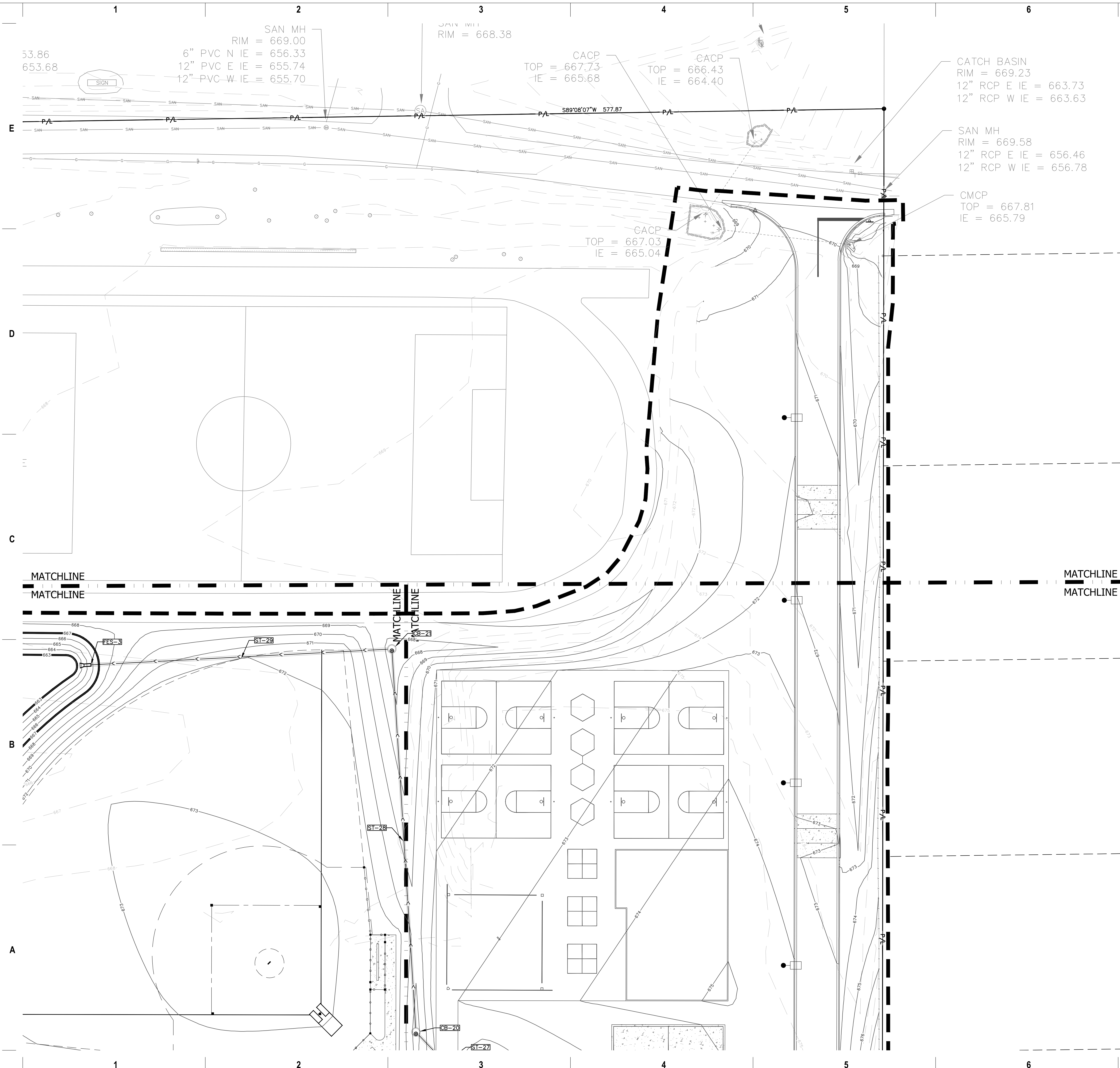
**DIGGERS HOTLINE**  
Dial 811 or (800)242-8511  
www.DiggersHotline.com

UTILITY NOTES

- KNOWN UTILITY AND POTENTIAL CONFLICT EXIST WITH EXISTING UNDERGROUND UTILITIES. PRIOR TO UTILITY INSTALLATION, CONTRACTOR TO EXCAVATE AND EXPOSE EXISTING UTILITIES, VERIFY LOCATIONS AND ELEVATIONS, AND CONTACT ENGINEER IF CONFLICTS EXIST WITH PROPOSED CONSTRUCTION AND EXISTING UNDERGROUND UTILITIES.
- PER PROJECT SPECIFICATIONS AND THE STANDARD SPECIFICATIONS FOR SEWER AND WATER CONSTRUCTION IN WISCONSIN, THE POINT OF COMMENCEMENT FOR THE LAYING OF SEWER PIPE SHALL BE AT THE LOWEST POINT IN THE PROPOSED SEWER LINE. THE PIPE SHALL BE LAD WITH THE BELL END OF THE BELL AND SPOOT PIPE, OR WITH THE RECEIVING GROOVE END OF THE TONGUE AND GROOVE PIPE, POINTING UPWARD. WHEN A NEW SEWER IS TO BE CONNECTED TO AN EXISTING SEWER NOT TERMINATING IN A MANHOLE, THE CONTRACTOR SHALL UNCOVER THE EXISTING SEWER TO ALLOW ANY ADJUSTMENTS IN LINE AND GRADE TO BE MADE BEFORE PIPE IS LAID.
- THE UNDERGROUND AND OVERHEAD UTILITY INFORMATION AS SHOWN HEREON IS BASED, IN PART, UPON INFORMATION FURNISHED BY UTILITY COMPANIES, LOCAL MUNICIPALITY, PROPERTY OWNER, AND DIGGER'S HOTLINE. WHILE THIS INFORMATION IS BELIEVED TO BE RELIABLE, ITS ACCURACY AND COMPLETENESS CANNOT BE GUARANTEED NOR CERTIFIED TO.
- GENERAL CONTRACTOR OR THEIR SUB CONTRACTORS SHALL APPLY FOR AND OBTAIN ALL THEIR REQUIRED PERMITS AND APPROVALS PRIOR TO THE START OF THEIR WORK. CONSULT WITH AND OBTAIN FROM ENGINEER COPIES OF ENGINEERING DESIGN APPROVAL PERMITS, INCLUDING BUT NOT LIMITED TO: MNPR, STATE OR LOCAL PLUMBING, WDOT, COUNTY, AND STORM WATER MANAGEMENT.
- GENERAL CONTRACTOR OR THEIR SUB CONTRACTORS SHALL CONTACT DIGGER'S HOTLINE TO ALLOW THEM SUFFICIENT TIME TO LOCATE EXISTING UTILITIES PRIOR TO COMMENCEMENT OF WORK.
- GENERAL CONTRACTOR OR THEIR SUB CONTRACTORS ARE RESPONSIBLE FOR COORDINATING THEIR WORK WITH ALL OTHER CONTRACTORS.
- GENERAL CONTRACTOR OR THEIR SUB CONTRACTORS ARE RESPONSIBLE FOR VERIFYING OWNERSHIP OF AND COORDINATING THE DEMOLITION AND/OR RELOCATION OF ALL EXISTING UTILITIES FROM EXISTING BUILDINGS AND WITHIN THE PROJECT LIMITS, INCLUDING BUT NOT LIMITED TO ELECTRICAL, FIBER OPTIC/TELEPHONE/CABLE/GAS/WATER/SANITARY/STORM. DEMOLITION OF THIS UTILITY WORK MUST BE IN ACCORDANCE WITH ALL STATE, FEDERAL, & LOCAL REGULATIONS.
- FOR ALL WORK, GENERAL CONTRACTOR OR THEIR SUB CONTRACTORS ARE RESPONSIBLE FOR REVIEWING BID DOCUMENTS, VERIFYING THE VERTICAL AND HORIZONTAL LOCATION OF ALL EXISTING UTILITIES WITHIN THE PROJECT LIMITS, AND INCLUDE IN THEIR CONTRACT THE RELOCATION OF SAID UTILITIES (NOTED OR NOT ON THE BID DOCUMENTS) AS NECESSARY TO PROVIDE PROPER DEPTH/CLEARANCE PER UTILITY OWNER'S REQUIREMENTS.

KEY INDEX

- PROJECT LIMITS
- STORM MANHOLE
- STORM CATCH BASIN WITH CURB BOX FRAME & GRATE
- RCP APRON ENDWALL
- RIP RAP
- WATER MAIN TEE
- WATER MAIN VALVE
- STORM SEWER
- SAN - SANITARY SEWER
- W - WATER MAIN



milwaukee 333 East Chicago Street  
Milwaukee, Wisconsin 53202  
414.271.5350

madison 309 West Johnson Street, Suite 202  
Madison, Wisconsin 53703  
608.442.2550

denver 1899 Wynkoop Street, Suite 700  
Denver, Colorado 80202  
303.566.4500

PROJECT INFORMATION

**BAYSIDE MIDDLE SCHOOL**

601 E ELLSWORTH LN, BAYSIDE, WI 53217

ISSUANCE AND REVISIONS

DATE	DESCRIPTION
1/16/2023	ARC SUBMISSION

KEY PLAN



**7711 N. Port Washington Road**  
Milwaukee, Wisconsin 53217

kapurinc.com

SHEET INFORMATION

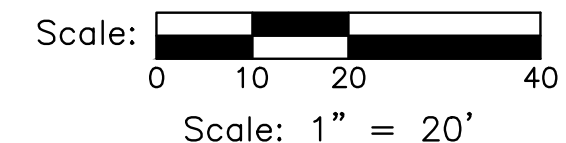
**PROGRESS DOCUMENTS NOT FOR CONSTRUCTION**

These documents reflect progress and intent and may be subject to change, including additional detail. These are not final construction documents and shall not be used for final bidding or construction-related purposes.

PROJECT MANAGER TS  
PROJECT NUMBER 19314-02

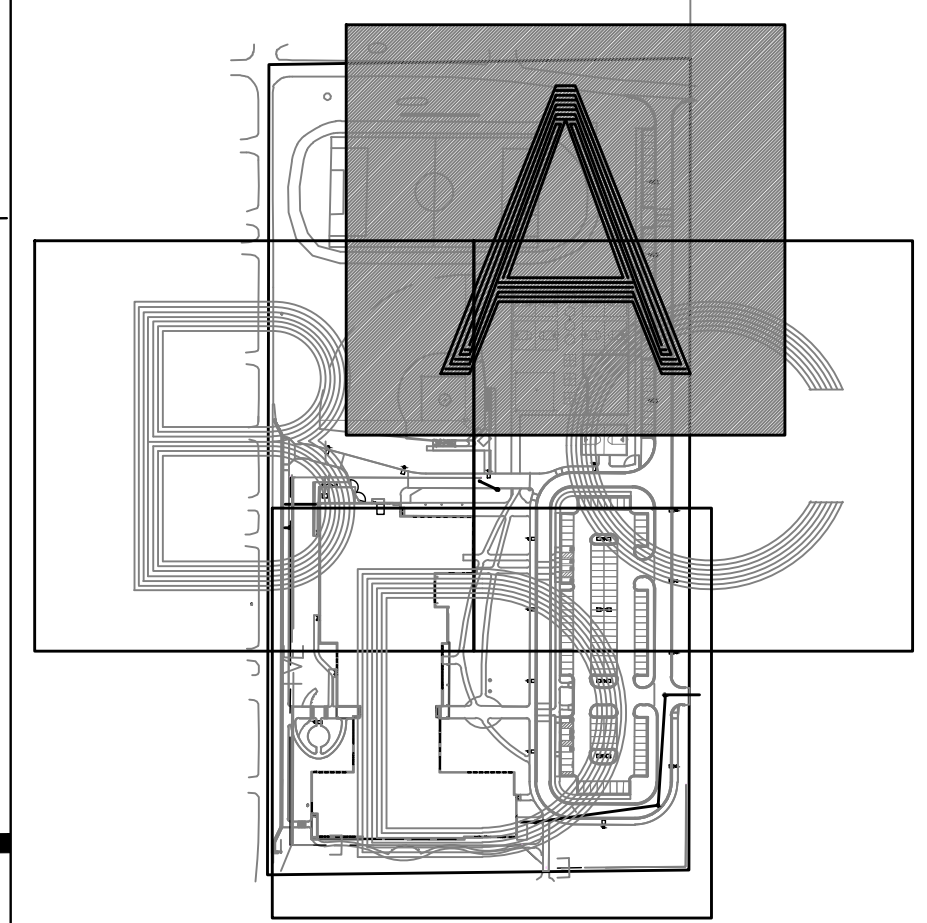
**SITE UTILITY PLAN - PHASE 2 - AREA A**

**C105-2A**



**DIGGERS HOTLINE**  
Dial 811 or (800)242-8511  
www.DiggersHotline.com

VICINITY MAP



UTILITY NOTES

- KNOWN UTILITY AND POTENTIAL CONFLICT EXIST WITH EXISTING UNDERGROUND UTILITIES. PRIOR TO UTILITY INSTALLATION, CONTRACTOR TO EXCAVATE AND EXPOSE EXISTING UTILITIES, VERIFY LOCATIONS AND ELEVATIONS, AND CONTACT ENGINEER IF CONFLICTS EXIST WITH PROPOSED CONSTRUCTION AND EXISTING UNDERGROUND UTILITIES.
- PER PROJECT SPECIFICATIONS AND THE STANDARD SPECIFICATIONS FOR SEWER AND WATER CONSTRUCTION IN WISCONSIN, THE POINT OF COMMENCEMENT FOR THE LAYING OF SEWER PIPE SHALL BE AT THE LOWEST POINT IN THE PROPOSED SEWER LINE. THE PIPE SHALL BE LAD WITH THE BELL END OF THE BELL AND SPOOT PIPE, OR WITH THE RECEIVING GROOVE END OF THE TONGUE AND GROOVE PIPE, POINTING UPGRADE. WHEN A NEW SEWER IS TO BE CONNECTED TO AN EXISTING SEWER NOT TERMINATING IN A MANHOLE, THE CONTRACTOR SHALL UNCOVER THE EXISTING SEWER TO ALLOW ANY ADJUSTMENTS IN LINE AND GRADE TO BE MADE BEFORE PIPE IS LAID.
  - THE UNDERGROUND AND OVERHEAD UTILITY INFORMATION AS SHOWN HEREON IS BASED, IN PART, UPON INFORMATION FURNISHED BY UTILITY COMPANIES, LOCAL MUNICIPALITY, PROPERTY OWNER, AND DIGGERS HOTLINE. WHILE THIS INFORMATION IS BELIEVED TO BE RELIABLE, ITS ACCURACY AND COMPLETENESS CANNOT BE GUARANTEED NOR CERTIFIED TO.
  - GENERAL CONTRACTOR OR THEIR SUB CONTRACTORS SHALL APPLY FOR AND OBTAIN ALL THEIR REQUIRED PERMITS AND APPROVALS PRIOR TO THE START OF THEIR WORK. CONSULT WITH AND OBTAIN FROM ENGINEER COPIES OF ENGINEERING DESIGN APPROVAL PERMITS, INCLUDING BUT NOT LIMITED TO: WDNR, STATE OR LOCAL PLUMBING, WDOT, COUNTY, AND STORM WATER MANAGEMENT.
  - GENERAL CONTRACTOR OR THEIR SUB CONTRACTORS SHALL CONTACT DIGGER'S HOTLINE TO ALLOW THEM SUFFICIENT TIME TO LOCATE EXISTING UTILITIES PRIOR TO COMMENCEMENT OF WORK.
  - GENERAL CONTRACTOR OR THEIR SUB CONTRACTORS ARE RESPONSIBLE FOR COORDINATING THEIR WORK WITH ALL OTHER CONTRACTORS.
  - GENERAL CONTRACTOR OR THEIR SUB CONTRACTORS ARE RESPONSIBLE FOR VERIFYING OWNERSHIP OF AND COORDINATING THE DEMOLITION AND/OR RELOCATION OF ALL EXISTING UTILITIES FROM EXISTING BUILDINGS AND WITHIN THE PROJECT LIMITS, INCLUDING BUT NOT LIMITED TO ELECTRICAL, FIBER OPTIC/TELEPHONE/CABLE/GAS/WATER/SANITARY/STORM. DEMOLITION OF THIS UTILITY WORK MUST BE IN ACCORDANCE WITH ALL STATE, FEDERAL, & LOCAL REGULATIONS.
  - FOR ALL WORK, GENERAL CONTRACTOR OR THEIR SUB CONTRACTORS ARE RESPONSIBLE FOR REVIEWING BID DOCUMENTS, VERIFYING THE VERTICAL AND HORIZONTAL LOCATION OF ALL EXISTING UTILITIES WITHIN THE PROJECT LIMITS, AND INCLUDE IN THEIR CONTRACT THE RELOCATION OF SAID UTILITIES (NOTED OR NOT ON THE BID DOCUMENTS) AS NECESSARY TO PROVIDE PROPER DEPTH/CLEARANCE PER UTILITY OWNER'S REQUIREMENTS.

KEY INDEX

- PROJECT LIMITS
- STORM MANHOLE
- STORM CATCH BASIN WITH CURB BOX FRAME & GRATE
- RCP APRON ENDWALL
- RIP RAP
- WATER MAIN TEE
- WATER MAIN VALVE
- STORM SEWER
- SANITARY SEWER
- WATER MAIN





milwaukee 333 East Chicago Street  
Milwaukee, Wisconsin 53202  
414.271.5350

madison 309 West Johnson Street, Suite 202  
Madison, Wisconsin 53703  
608.442.2550

denver 1899 Wynkoop Street, Suite 700  
Denver, Colorado 80202  
303.586.4500

PROJECT INFORMATION  
**BAYSIDE MIDDLE SCHOOL**

601 E ELLSWORTH LN, BAYSIDE, WI 53217

ISSUANCE AND REVISIONS

DATE	DESCRIPTION
1/16/2023	ARC SUBMISSION

KEY PLAN



SHEET INFORMATION

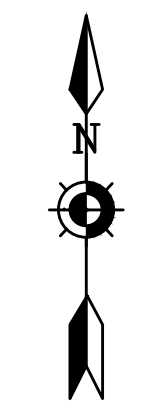
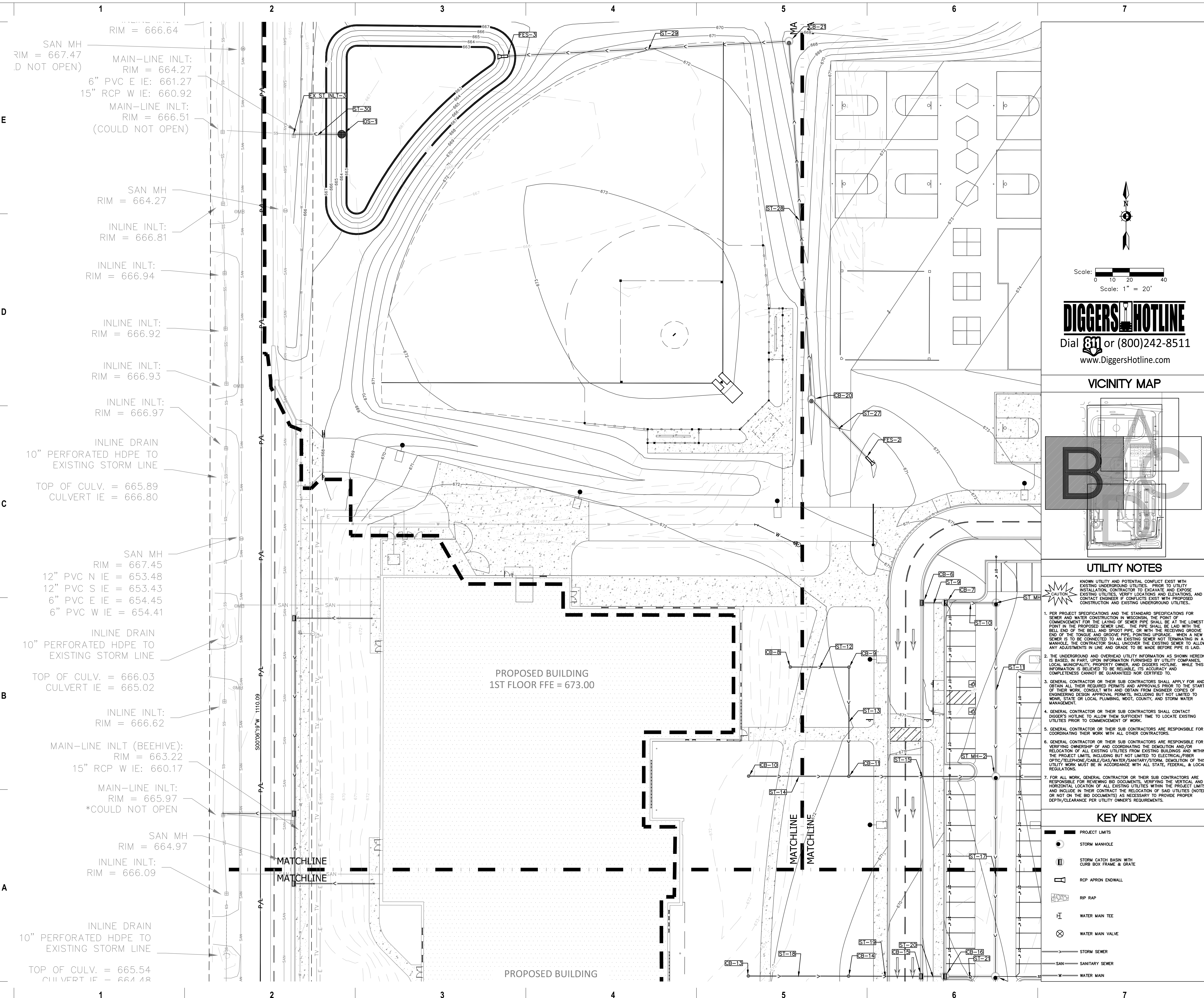
**PROGRESS DOCUMENTS NOT FOR CONSTRUCTION**

These documents reflect progress and intent and may be subject to change, including additional detail. These are not final construction documents and shall not be used for final bidding or construction-related purposes.

PROJECT MANAGER TS  
PROJECT NUMBER 19314-02

**SITE UTILITY PLAN - PHASE 2 - AREA B**

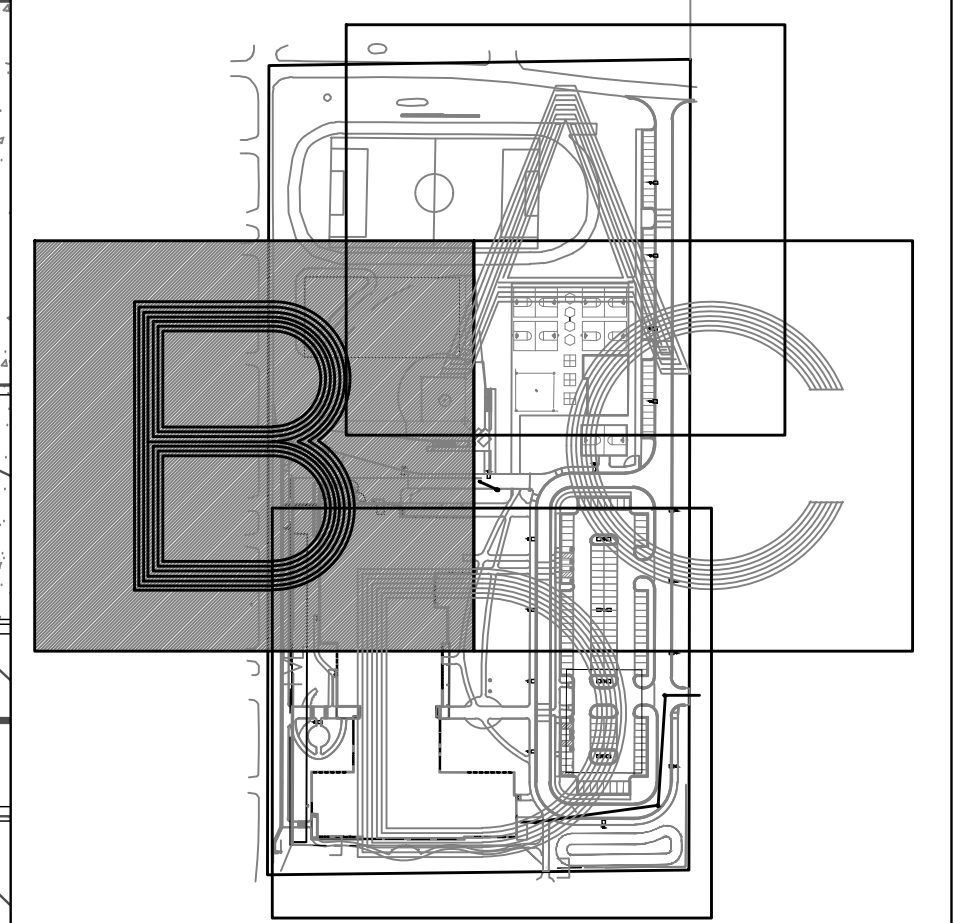
**C105-2B**



Scale: 0 10 20 40  
Scale: 1" = 20'

**DIGGERSHOTLINE**  
Dial 811 or (800)242-8511  
www.DiggersHotline.com

VICINITY MAP



UTILITY NOTES

- KNOWN UTILITY AND POTENTIAL CONFLICT EXIST WITH EXISTING UNDERGROUND UTILITIES. PRIOR TO UTILITY INSTALLATION, CONTRACTOR TO EXCAVATE AND EXPOSE EXISTING UTILITIES, VERIFY LOCATIONS AND ELEVATIONS, AND CONTACT ENGINEER IF CONFLICTS EXIST WITH PROPOSED CONSTRUCTION AND EXISTING UNDERGROUND UTILITIES.
- PER PROJECT SPECIFICATIONS AND THE STANDARD SPECIFICATIONS FOR SEWER AND WATER CONSTRUCTION IN WISCONSIN, THE POINT OF COMMENCEMENT FOR THE LAYING OF SEWER PIPE SHALL BE AT THE LOWEST POINT IN THE PROPOSED SEWER LINE. THE PIPE SHALL BE LAD WITH THE BELL END OF THE BELL AND SPOUT PIPE, OR WITH THE RECEIVING GROOVE END OF THE TONGUE AND GROOVE PIPE, POINTING UPGRADE. WHEN A NEW SEWER IS TO BE CONNECTED TO AN EXISTING SEWER NOT TERMINATING IN A MANHOLE, THE CONTRACTOR SHALL UNCOVER THE EXISTING SEWER TO ALLOW ANY ADJUSTMENTS IN LINE AND GRADE TO BE MADE BEFORE PIPE IS LAID.
- THE UNDERGROUND AND OVERHEAD UTILITY INFORMATION AS SHOWN HEREON IS BASED, IN PART, UPON INFORMATION FURNISHED BY UTILITY COMPANIES, LOCAL MUNICIPALITY, PROPERTY OWNER, AND DIGGER'S HOTLINE. WHILE THIS INFORMATION IS BELIEVED TO BE RELIABLE, ITS ACCURACY AND COMPLETENESS CANNOT BE GUARANTEED NOR CERTIFIED TO.
- GENERAL CONTRACTOR OR THEIR SUB CONTRACTORS SHALL APPLY FOR AND OBTAIN ALL THEIR REQUIRED PERMITS AND APPROVALS PRIOR TO THE START OF THEIR WORK. CONSULT WITH AND OBTAIN FROM ENGINEER COPIES OF ENGINEERING DESIGN APPROVALS, INCLUDING BUT NOT LIMITED TO: MNPR, STATE OR LOCAL PLUMBING, WOOD, COUNTY, AND STORM WATER MANAGEMENT.
- GENERAL CONTRACTOR OR THEIR SUB CONTRACTORS SHALL CONTACT DIGGER'S HOTLINE TO ALLOW THEM SUFFICIENT TIME TO LOCATE EXISTING UTILITIES PRIOR TO COMMENCEMENT OF WORK.
- GENERAL CONTRACTOR OR THEIR SUB CONTRACTORS ARE RESPONSIBLE FOR VERIFYING OWNERSHIP OF AND COORDINATING THE DEMOLITION AND/OR RELOCATION OF ALL EXISTING UTILITIES FROM EXISTING BUILDINGS AND WITHIN THE PROJECT LIMITS, INCLUDING BUT NOT LIMITED TO ELECTRICAL, FIBER OPTIC/TELEPHONE/CABLE/GAS/WATER/SANITARY/STORM. DEMOLITION OF THIS UTILITY WORK MUST BE IN ACCORDANCE WITH ALL STATE, FEDERAL, & LOCAL REGULATIONS.
- FOR ALL WORK, GENERAL CONTRACTOR OR THEIR SUB CONTRACTORS ARE RESPONSIBLE FOR REVIEWING BID DOCUMENTS, VERIFYING THE VERTICAL AND HORIZONTAL LOCATION OF ALL EXISTING UTILITIES WITHIN THE PROJECT LIMITS, AND INCLUDE IN THEIR CONTRACT THE RELOCATION OF SAID UTILITIES (NOTED OR NOT ON THE BID DOCUMENTS) AS NECESSARY TO PROVIDE PROPER DEPTH/CLEARANCE PER UTILITY OWNER'S REQUIREMENTS.

KEY INDEX

- PROJECT LIMITS
- STORM MANHOLE
- STORM CATCH BASIN WITH CURB BOX FRAME & GRATE
- RCP APRON ENDWALL
- RIP RAP
- WATER MAIN TEE
- WATER MAIN VALVE
- STORM SEWER
- SANITARY SEWER
- WATER MAIN

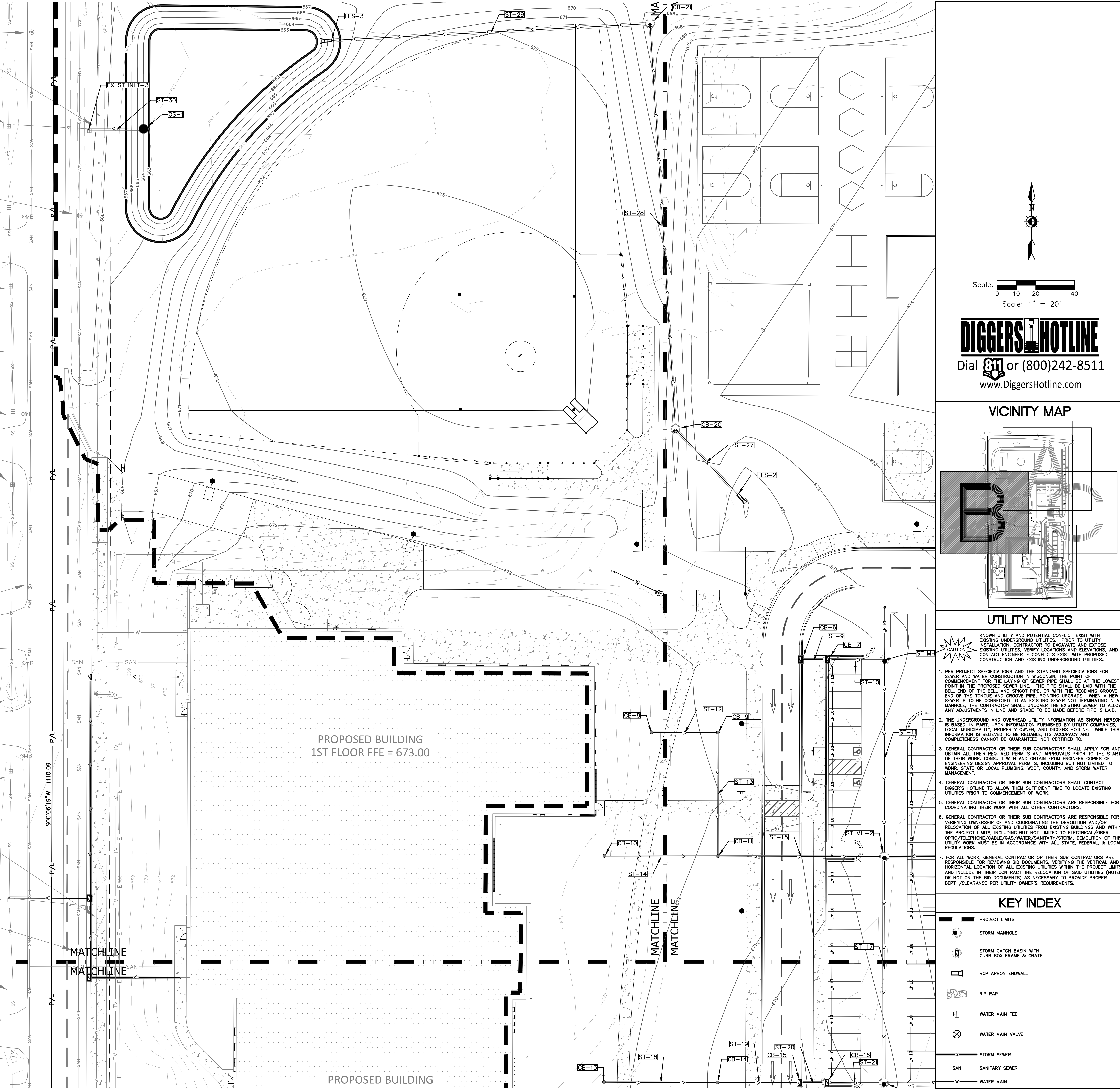
1 RIM = 666.64  
SAN MH RIM = 667.47 (D NOT OPEN)  
MAIN-LINE INLT: RIM = 664.27  
6" PVC E IE: 661.27  
15" RCP W IE: 660.92  
MAIN-LINE INLT: RIM = 666.51 (COULD NOT OPEN)

2 SAN MH RIM = 664.27  
INLINE INLT: RIM = 666.81  
INLINE INLT: RIM = 666.94  
INLINE INLT: RIM = 666.92  
INLINE INLT: RIM = 666.93  
INLINE INLT: RIM = 666.97  
INLINE DRAIN 10" PERFORATED HDPE TO EXISTING STORM LINE  
TOP OF CULV. = 665.89  
CULVERT IE = 666.80

3 SAN MH RIM = 667.45  
12" PVC N IE = 653.48  
12" PVC S IE = 653.43  
6" PVC E IE = 654.45  
6" PVC W IE = 654.41  
INLINE DRAIN 10" PERFORATED HDPE TO EXISTING STORM LINE  
TOP OF CULV. = 666.03  
CULVERT IE = 665.02

4 SAN MH RIM = 664.97  
MAIN-LINE INLT (BEEHIVE): RIM = 663.22  
15" RCP W IE: 660.17  
MAIN-LINE INLT: RIM = 665.97 \*COULD NOT OPEN  
SAN MH RIM = 664.97  
INLINE INLT: RIM = 666.09

5 SAN MH RIM = 664.97  
INLINE INLT: RIM = 666.09  
INLINE DRAIN 10" PERFORATED HDPE TO EXISTING STORM LINE  
TOP OF CULV. = 665.54  
CULVERT IE = 664.48



PROPOSED BUILDING  
1ST FLOOR FFE = 673.00

PROPOSED BUILDING

A

B

C

D

E

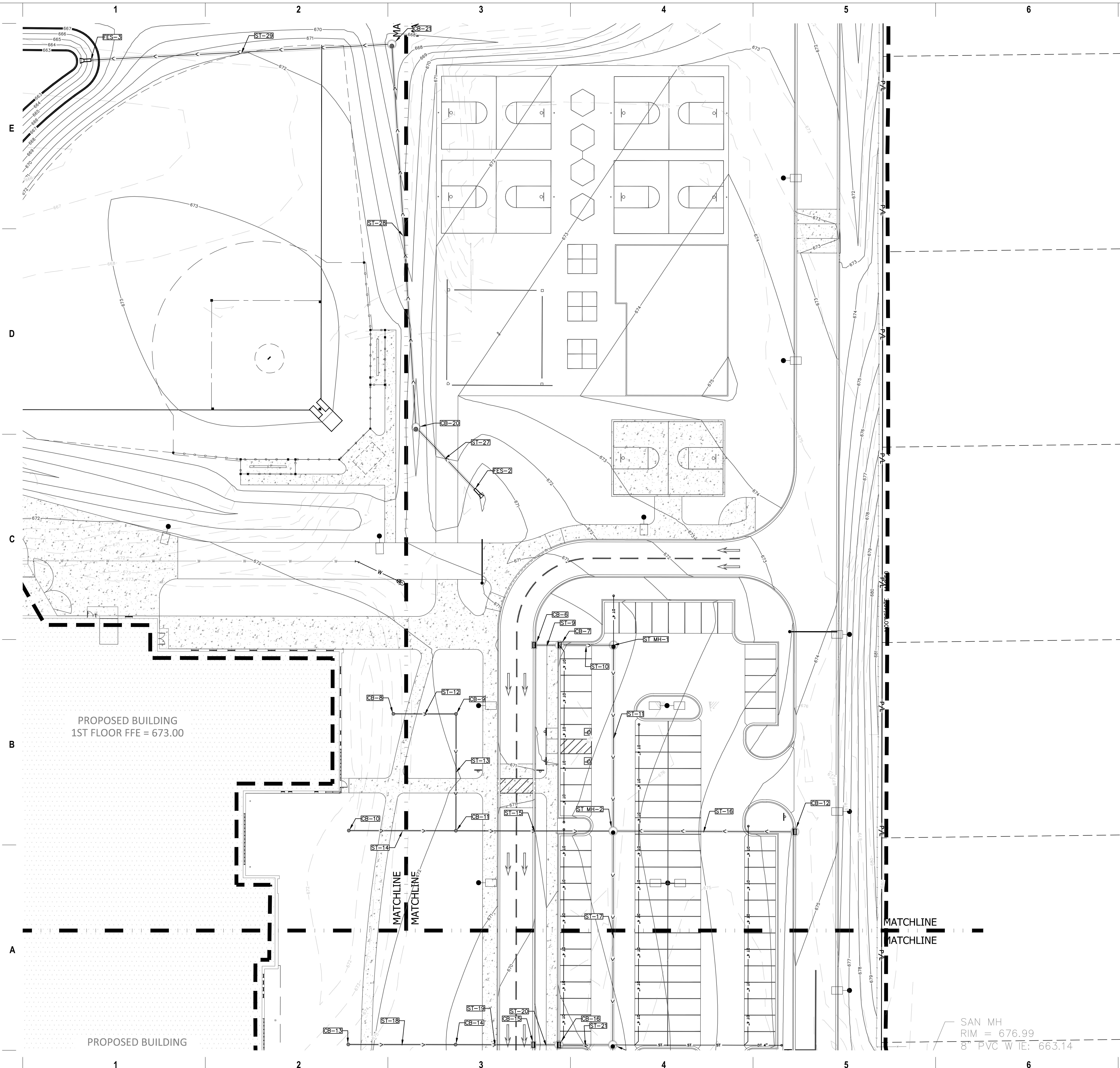
A

B

C

D

E



milwaukee 333 East Chicago Street  
Milwaukee, Wisconsin 53202  
414.271.5350

madison 309 West Johnson Street, Suite 202  
Madison, Wisconsin 53703  
608.442.2550

denver 1899 Wynkoop Street, Suite 700  
Denver, Colorado 80202  
303.566.4500

PROJECT INFORMATION

**BAYSIDE MIDDLE SCHOOL**

601 E ELLSWORTH LN, BAYSIDE, WI 53217

ISSUANCE AND REVISIONS

DATE	DESCRIPTION
1/16/2023	ARC SUBMISSION

KEY PLAN

7711 N. Port Washington Road  
Milwaukee, Wisconsin 53217

kapurinc.com

SHEET INFORMATION

**PROGRESS DOCUMENTS NOT FOR CONSTRUCTION**

These documents reflect progress and intent and may be subject to change, including additional detail. These are not final construction documents and shall not be used for final bidding or construction-related purposes.

PROJECT MANAGER TS

PROJECT NUMBER 19314-02

**SITE UTILITY PLAN - PHASE 2 - AREA C**

**C105-2C**

Scale: 0 10 20 40  
Scale: 1" = 20'

**DIGGERS HOTLINE**  
Dial 811 or (800)242-8511  
www.DiggersHotline.com

VICINITY MAP

- UTILITY NOTES**
- KNOWN UTILITY AND POTENTIAL CONFLICT EXIST WITH EXISTING UNDERGROUND UTILITIES. PRIOR TO UTILITY INSTALLATION, CONTRACTOR TO EXCAVATE AND EXPOSE EXISTING UTILITIES, VERIFY LOCATIONS AND ELEVATIONS, AND CONTACT ENGINEER IF CONFLICTS EXIST WITH PROPOSED CONSTRUCTION AND EXISTING UNDERGROUND UTILITIES.
  - PER PROJECT SPECIFICATIONS AND THE STANDARD SPECIFICATIONS FOR SEWER AND WATER CONSTRUCTION IN WISCONSIN, THE POINT OF COMMENCEMENT FOR THE LAYING OF SEWER PIPE SHALL BE AT THE LOWEST POINT IN THE PROPOSED SEWER LINE. THE PIPE SHALL BE LAD WITH THE BELL END OF THE BELL AND SPIGOT PIPE, OR WITH THE RECEIVING GROOVE END OF THE TONGUE AND GROOVE PIPE, POINTING UPGRADE. WHEN A NEW SEWER IS TO BE CONNECTED TO AN EXISTING SEWER NOT TERMINATING IN A MANHOLE, THE CONTRACTOR SHALL UNCOVER THE EXISTING SEWER TO ALLOW ANY ADJUSTMENTS IN LINE AND GRADE TO BE MADE BEFORE PIPE IS LAID.
  - THE UNDERGROUND AND OVERHEAD UTILITY INFORMATION AS SHOWN HEREON IS BASED, IN PART, UPON INFORMATION FURNISHED BY UTILITY COMPANIES, LOCAL MUNICIPALITY, PROPERTY OWNERS, AND DIGGERS HOTLINE. WHILE THIS INFORMATION IS BELIEVED TO BE RELIABLE, ITS ACCURACY AND COMPLETENESS CANNOT BE GUARANTEED NOR CERTIFIED TO.
  - GENERAL CONTRACTOR OR THEIR SUB CONTRACTORS SHALL APPLY FOR AND OBTAIN ALL THEIR REQUIRED PERMITS AND APPROVALS PRIOR TO THE START OF THEIR WORK. CONSULT WITH AND OBTAIN FROM ENGINEER COPIES OF ENGINEERING DESIGN APPROVAL PERMITS, INCLUDING BUT NOT LIMITED TO: MNPR, STATE OR LOCAL PLUMBING, WDOT, COUNTY, AND STORM WATER MANAGEMENT.
  - GENERAL CONTRACTOR OR THEIR SUB CONTRACTORS SHALL CONTACT DIGGER'S HOTLINE TO ALLOW THEM SUFFICIENT TIME TO LOCATE EXISTING UTILITIES PRIOR TO COMMENCEMENT OF WORK.
  - GENERAL CONTRACTOR OR THEIR SUB CONTRACTORS ARE RESPONSIBLE FOR COORDINATING THEIR WORK WITH ALL OTHER CONTRACTORS.
  - GENERAL CONTRACTOR OR THEIR SUB CONTRACTORS ARE RESPONSIBLE FOR VERIFYING OWNERSHIP OF AND COORDINATING THE DEMOLITION AND/OR RELOCATION OF ALL EXISTING UTILITIES FROM EXISTING BUILDINGS AND WITHIN THE PROJECT LIMITS, INCLUDING BUT NOT LIMITED TO ELECTRICAL, FIBER OPTIC/TELEPHONE/CABLE/GAS/WATER/SANITARY/STORM. DEMOLITION OF THIS UTILITY WORK MUST BE IN ACCORDANCE WITH ALL STATE, FEDERAL, & LOCAL REGULATIONS.
  - FOR ALL WORK, GENERAL CONTRACTOR OR THEIR SUB CONTRACTORS ARE RESPONSIBLE FOR REVIEWING BID DOCUMENTS, VERIFYING THE VERTICAL AND HORIZONTAL LOCATION OF ALL EXISTING UTILITIES WITHIN THE PROJECT LIMITS, AND INCLUDE IN THEIR CONTRACT THE RELOCATION OF SAID UTILITIES (NOTED OR NOT ON THE BID DOCUMENTS) AS NECESSARY TO PROVIDE PROPER DEPTH/CLEARANCE PER UTILITY OWNER'S REQUIREMENTS.

**KEY INDEX**

- PROJECT LIMITS
- STORM MANHOLE
- STORM CATCH BASIN WITH CURB BOX FRAME & GRATE
- RCP APRON ENDWALL
- RIP RAP
- WATER MAIN TEE
- WATER MAIN VALVE
- STORM SEWER
- SANITARY SEWER
- WATER MAIN



milwaukee 333 East Chicago Street  
Milwaukee, Wisconsin 53202  
414.271.5350

madison 309 West Johnson Street, Suite 202  
Madison, Wisconsin 53703  
608.442.2550

denver 1899 Wynkoop Street, Suite 700  
Denver, Colorado 80202  
303.566.4500

PROJECT INFORMATION

**BAYSIDE MIDDLE SCHOOL**

601 E ELLSWORTH LN, BAYSIDE, WI 53217

ISSUANCE AND REVISIONS

DATE	DESCRIPTION
1/16/2023	ARC SUBMISSION

KEY PLAN



SHEET INFORMATION

**PROGRESS DOCUMENTS NOT FOR CONSTRUCTION**

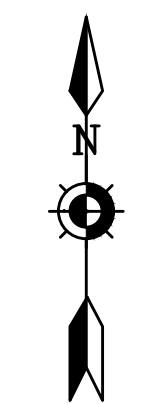
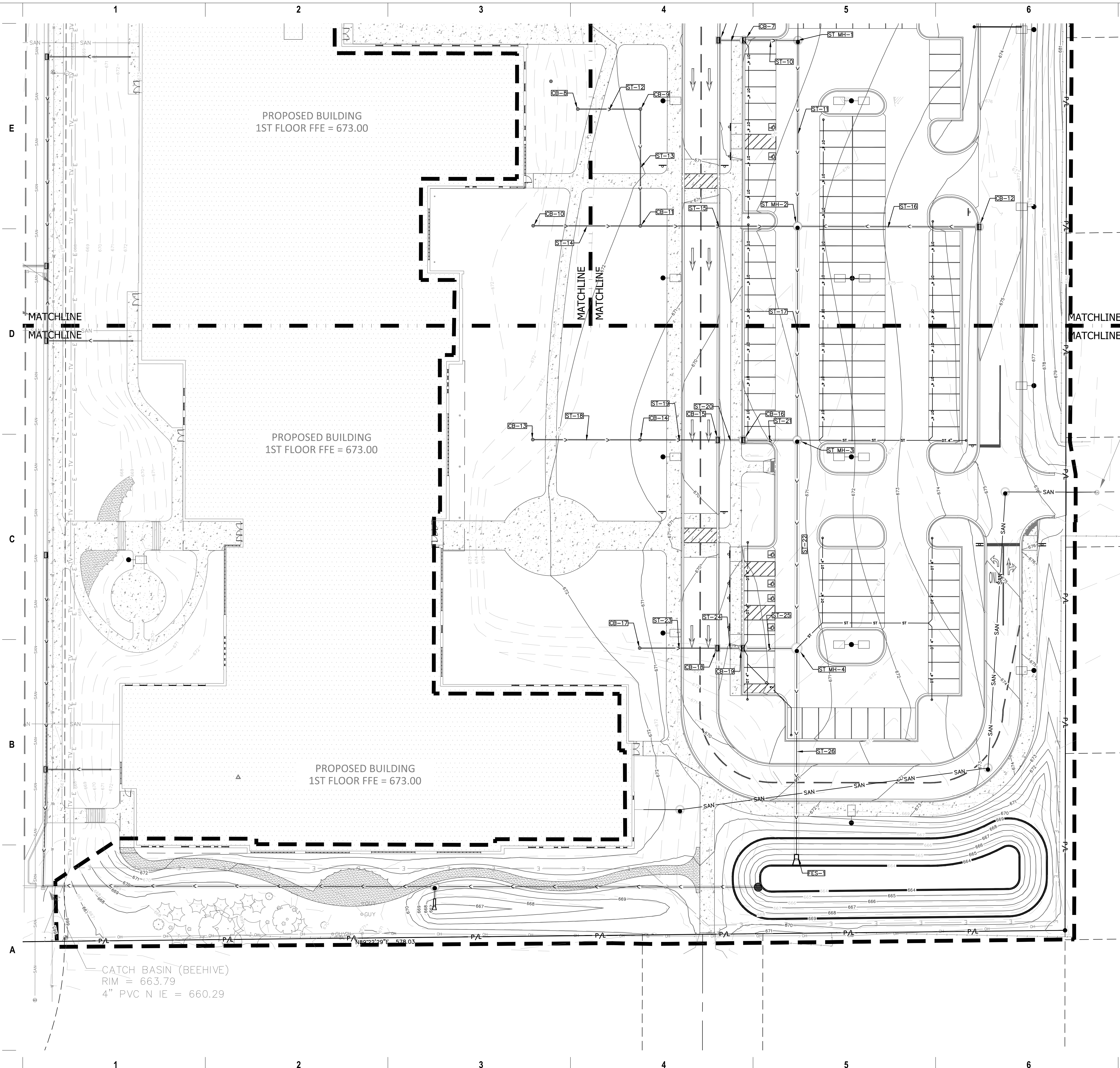
These documents reflect progress and intent and may be subject to change, including additional detail. These are not final construction documents and shall not be used for final bidding or construction-related purposes.

PROJECT MANAGER TS

PROJECT NUMBER 19314-02

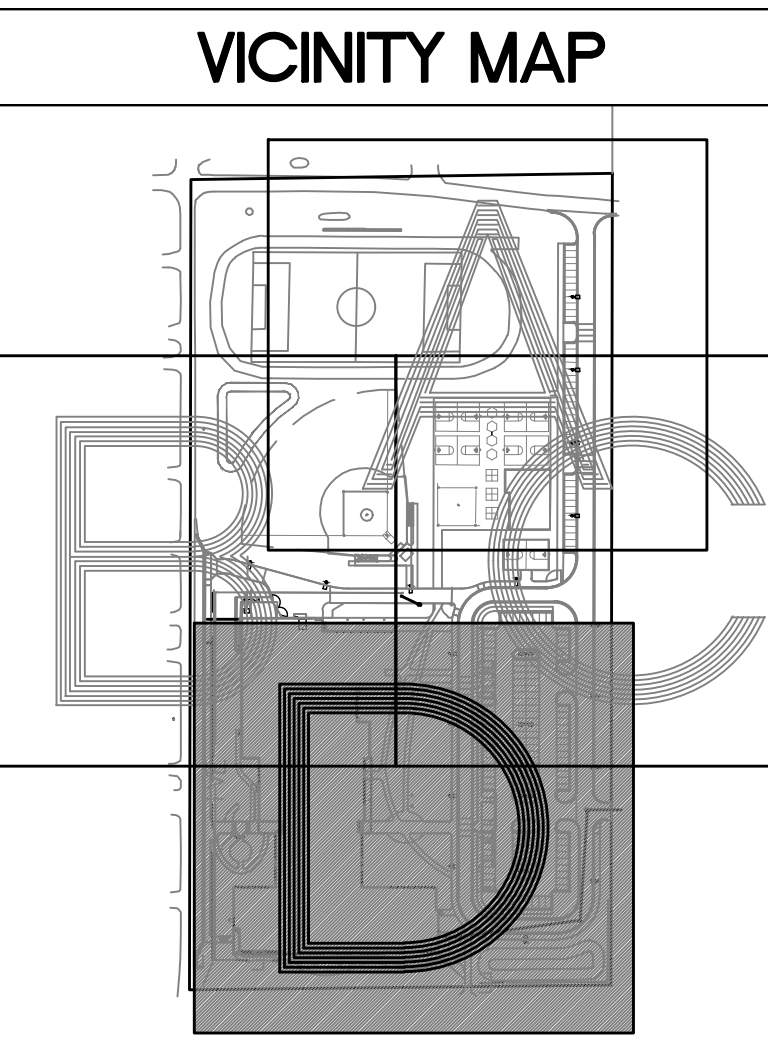
**SITE UTILITY PLAN - PHASE 2 - AREA D**

**C105-2D**



Scale: 0 10 20 40  
Scale: 1" = 20'

**DIGGERS HOTLINE**  
Dial 811 or (800)242-8511  
www.DiggersHotline.com



UTILITY NOTES

KNOWN UTILITY AND POTENTIAL CONFLICT EXIST WITH EXISTING UNDERGROUND UTILITIES. PRIOR TO UTILITY INSTALLATION, CONTRACTOR TO EXCAVATE AND EXPOSE EXISTING UTILITIES, VERIFY LOCATIONS AND ELEVATIONS, AND CONTACT ENGINEER IF CONFLICTS EXIST WITH PROPOSED CONSTRUCTION AND EXISTING UNDERGROUND UTILITIES.

- PER PROJECT SPECIFICATIONS AND THE STANDARD SPECIFICATIONS FOR SEWER AND WATER CONSTRUCTION IN WISCONSIN, THE POINT OF COMMENCEMENT FOR THE LAYING OF SEWER PIPE SHALL BE AT THE LOWEST POINT IN THE PROPOSED SEWER LINE. THE PIPE SHALL BE LAD WITH THE BELL END OF THE BELL AND SPOUT PIPE, OR WITH THE RECEIVING GROOVE END OF THE TONGUE AND GROOVE PIPE, POINTING UPGRADE. WHEN A NEW SEWER IS TO BE CONNECTED TO AN EXISTING SEWER NOT TERMINATING IN A MANHOLE, THE CONTRACTOR SHALL UNCOVER THE EXISTING SEWER TO ALLOW ANY ADJUSTMENTS IN LINE AND GRADE TO BE MADE BEFORE PIPE IS LAID.
- THE UNDERGROUND AND OVERHEAD UTILITY INFORMATION AS SHOWN HEREON IS BASED, IN PART, UPON INFORMATION FURNISHED BY UTILITY COMPANIES, LOCAL MUNICIPALITY, PROPERTY OWNER, AND DIGGERS HOTLINE. WHILE THIS INFORMATION IS BELIEVED TO BE RELIABLE, ITS ACCURACY AND COMPLETENESS CANNOT BE GUARANTEED NOR CERTIFIED TO.
- GENERAL CONTRACTOR OR THEIR SUB CONTRACTORS SHALL APPLY FOR AND OBTAIN ALL THEIR REQUIRED PERMITS AND APPROVALS PRIOR TO THE START OF THEIR WORK. CONSULT WITH AND OBTAIN FROM ENGINEER COPIES OF ENGINEERING DESIGN APPROVAL PERMITS, INCLUDING BUT NOT LIMITED TO: MNPR, STATE OR LOCAL PLUMBING, WDOT, COUNTY, AND STORM WATER MANAGEMENT.
- GENERAL CONTRACTOR OR THEIR SUB CONTRACTORS SHALL CONTACT DIGGER'S HOTLINE TO ALLOW THEM SUFFICIENT TIME TO LOCATE EXISTING UTILITIES PRIOR TO COMMENCEMENT OF WORK.
- GENERAL CONTRACTOR OR THEIR SUB CONTRACTORS ARE RESPONSIBLE FOR COORDINATING THEIR WORK WITH ALL OTHER CONTRACTORS.
- GENERAL CONTRACTOR OR THEIR SUB CONTRACTORS ARE RESPONSIBLE FOR VERIFYING OWNERSHIP OF AND COORDINATING THE DEMOLITION AND/OR RELOCATION OF ALL EXISTING UTILITIES FROM EXISTING BUILDINGS AND WITHIN THE PROJECT LIMITS, INCLUDING BUT NOT LIMITED TO ELECTRICAL, FIBER OPTIC/TELEPHONE/CABLE/GAS/WATER/SANITARY/STORM. DEMOLITION OF THIS UTILITY WORK MUST BE IN ACCORDANCE WITH ALL STATE, FEDERAL, & LOCAL REGULATIONS.
- FOR ALL WORK, GENERAL CONTRACTOR OR THEIR SUB CONTRACTORS ARE RESPONSIBLE FOR REVIEWING BID DOCUMENTS, VERIFYING THE VERTICAL AND HORIZONTAL LOCATION OF ALL EXISTING UTILITIES WITHIN THE PROJECT LIMITS, AND INCLUDE IN THEIR CONTRACT THE RELOCATION OF SAID UTILITIES (NOTED OR NOT ON THE BID DOCUMENTS) AS NECESSARY TO PROVIDE PROPER DEPTH/CLEARANCE PER UTILITY OWNER'S REQUIREMENTS.

KEY INDEX

- PROJECT LIMITS
- STORM MANHOLE
- STORM CATCH BASIN WITH CURB BOX FRAME & GRATE
- RCP APRON ENDWALL
- RIP RAP
- WATER MAIN TEE
- WATER MAIN VALVE
- STORM SEWER
- SAN - SANITARY SEWER
- W - WATER MAIN

PROPOSED BUILDING  
1ST FLOOR FFE = 673.00

PROPOSED BUILDING  
1ST FLOOR FFE = 673.00

PROPOSED BUILDING  
1ST FLOOR FFE = 673.00

CATCH BASIN (BEEHIVE)  
RIM = 663.79  
4" PVC N IE = 660.29



milwaukee 333 East Chicago Street  
Milwaukee, Wisconsin 53202  
414.271.5330

madison 309 West Johnson Street, Suite 202  
Madison, Wisconsin 53703  
608.442.2350

denver 1899 Wynkoop Street, Suite 700  
Denver, Colorado 80202  
303.586.4500

PROJECT INFORMATION

BAYSIDE MIDDLE  
SCHOOL

601 E ELLSWORTH  
LN, BAYSIDE, WI  
53217

ISSUANCE AND REVISIONS

DATE	DESCRIPTION
1/16/2023	ARC SUBMISSION

KEY PLAN



7711 N. Port Washington Road  
Milwaukee, Wisconsin 53217  
kapurinc.com

SHEET INFORMATION

PROGRESS DOCUMENTS  
NOT FOR CONSTRUCTION

These documents reflect progress and intent and may be subject to change, including additional detail. These are not final construction documents and shall not be used for final bidding or construction-related purposes.

PROJECT MANAGER TS

PROJECT NUMBER 19314-02

SITE UTILITY  
TABLES

C105T

STORM SEWER STRUCTURE TABLE					
STRUCTURE NAME:	TYPE (FRAME AND GRATE):	RIM ELEVATION:	PIPES IN:	PIPES OUT	BOTTOM:
CB-1	2' X 3' RECTANGULAR (R-3067)	666.53	ST-1, 10" E INV = 663.53	ST-2, 12" S INV = 663.43	663.43
CB-2	2' X 3' RECTANGULAR (R-3067)	666.28	ST-3, 10" E INV = 663.28	ST-4, 12" N INV = 663.18	663.18
CB-3	2' X 3' RECTANGULAR (R-3067)	666.33	ST-2, 12" N INV = 662.28 ST-4, 12" S INV = 662.77	ST-5, 15" W INV = 662.03	662.03
CB-4	2' X 3' RECTANGULAR (R-3067)	666.31		ST-6, 12" S INV = 663.31	663.31
CB-5	2' X 3' RECTANGULAR (R-3067)	666.31	ST-6, 12" N INV = 662.14 ST-7, 12" E INV = 663.31	ST-8, 15" S INV = 661.89	661.89
CB-6	2' X 3' RECTANGULAR (R-3067)	669.99		ST-9, 12" E INV = 666.76	666.76
CB-7	48" DIAMETER (R-3067)	669.88	ST-9, 12" W INV = 666.63	ST-10, 15" E INV = 666.63	666.63
CB-8	18" NYLOPLAST DRAIN (1899CGS)	672.53		ST-12, 8" E INV = 669.78	669.78
CB-9	18" NYLOPLAST DRAIN (1899CGS)	671.81	ST-12, 8" W INV = 669.44	ST-13, 8" S INV = 669.34	669.34
CB-10	18" NYLOPLAST DRAIN (1899CGS)	672.69		ST-14, 8" E INV = 671.00	671.00
CB-11	18" NYLOPLAST DRAIN (1899CGS)	671.79	ST-13, 8" N INV = 668.70 ST-14, 8" W INV = 670.41	ST-15, 8" E INV = 667.41	667.41
CB-12	48" DIAMETER (R-3067)	674.52		ST-16, 12" W INV = 671.00	669.50
CB-13	18" NYLOPLAST DRAIN (1899CGS)	672.22		ST-18, 8" E INV = 668.03	668.03
CB-14	18" NYLOPLAST DRAIN (1899CGS)	670.86	ST-18, 8" W INV = 667.44	ST-19, 8" E INV = 667.34	667.34
CB-15	2' X 3' RECTANGULAR (R-3067)	669.26	ST-19, 8" W INV = 666.91	ST-20, 12" E INV = 666.58	666.58
CB-16	48" DIAMETER (R-3067)	669.68	ST-20, 12" W INV = 666.45	ST-21, 15" E INV = 666.20	666.20
CB-17	18" NYLOPLAST DRAIN (1899CGS)	671.34		ST-23, 8" E INV = 667.03	667.03
CB-18	2' X 3' RECTANGULAR (R-3067)	669.27	ST-23, 8" W INV = 666.60	ST-24, 12" E INV = 666.27	666.27
CB-19	48" DIAMETER (R-3067)	669.48	ST-24, 12" W INV = 666.14	ST-25, 15" E INV = 665.89	665.89
CB-20	48" DIAMETER (R-2502-D)	669.46	ST-27, 12" SE INV = 666.46	ST-28, 12" N INV = 666.46	664.96
CB-21	48" DIAMETER (R-2502-D)	667.39	ST-28, 12" S INV = 665.41	ST-29, 15" W INV = 665.16	663.66
EX ST INLT-1	N/A	665.97	ST-5, 15" E INV = 661.61 EX ST, 24" N INV =	EX ST, 24" S INV =	
EX ST INLT-2	N/A	663.79	ST-8, 15" N INV = 660.50 ST-33, 15" E INV = 659.94	EX ST, 15" W INV =	
EX ST INLT-3	N/A	664.27	ST-30, 15" E INV = 660.92	EX ST, 15" W INV = 660.92	
FES-1	24" RCP APRON ENDWALL		ST-26, 24" N INV = 664.00		
FES-2	12" RCP APRON ENDWALL			ST-27, 12" NW INV = 669.84	
FES-3	15" RCP APRON ENDWALL		ST-29, 15" E INV = 663.49		
FES-4	12" RCP APRON ENDWALL			ST-32, 12" N INV = 666.22	
OS-1	48" OUTLET STRUCTURE			ST-30, 15" W INV = 661.00	659.50
OS-2	48" OUTLET STRUCTURE			ST-31, 18" W INV = 662.00	660.50
ST BLDG-1	N/A			ST-1, 10" W INV = 665.78	
ST BLDG-2	N/A			ST-3, 10" W INV = 665.61	
ST BLDG-3	N/A			ST-7, 12" W INV = 665.06	
ST MH-1	48" DIAMETER (R-1661)	670.65	ST-10, 15" W INV = 666.48	ST-11, 15" S INV = 666.48	666.48
ST MH-2	48" DIAMETER (R-1661)	671.58	ST-11, 15" N INV = 665.97 ST-15, 8" W INV = 666.55 ST-16, 12" E INV = 668.03	ST-17, 18" S INV = 665.72	665.72
ST MH-3	48" DIAMETER (R-1661)	670.70	ST-17, 18" N INV = 665.43 ST-21, 15" W INV = 665.90	ST-22, 24" S INV = 664.93	664.93
ST MH-4	60" DIAMETER (R-1661)	667.08	ST-25, 15" W INV = 665.59 ST-22, 24" N INV = 664.64	ST-26, 24" S INV = 664.54	
ST MH-5	48" DIAMETER (R-1661)	669.72	ST-32, 12" S INV = 666.15 ST-31, 18" E INV = 661.11	ST-33, 15" W INV = 661.01	661.01

STORM SEWER PIPE TABLE								
PIPE NAME:	FROM:	TO:	UPSTREAM INVERT ELEVATION:	DOWNSTREAM INVERT ELEVATION:	LENGTH:	SLOPE:	SIZE AND MATERIAL:	GPM:
ST-1	ST BLDG-1	CB-1	665.78	663.53	45.03'	5.00%	10" SDR 35 PVC PIPE	
ST-2	CB-1	CB-3	663.43	662.28	114.57'	1.00%	12" SMOOTH INTERIOR WALL HDPE PIPE	
ST-3	ST BLDG-2	CB-2	665.61	663.28	46.70'	5.00%	10" SDR 35 PVC PIPE	
ST-4	CB-2	CB-3	663.18	662.77	40.98'	1.00%	12" SMOOTH INTERIOR WALL HDPE PIPE	
ST-5	CB-3	EX ST INLT-1	662.03	661.61	41.99'	1.00%	15" CLASS IV RCP	
ST-6	CB-4	CB-5	663.31	662.14	117.39'	1.00%	12" SMOOTH INTERIOR WALL HDPE PIPE	
ST-7	ST BLDG-3	CB-5	665.06	663.31	35.00'	5.00%	12" SDR 35 PVC PIPE	
ST-8	CB-5	EX ST INLT-2	661.89	660.50	63.86'	2.18%	15" CLASS IV RCP	
ST-9	CB-6	CB-7	666.76	666.63	13.00'	1.00%	12" SMOOTH INTERIOR WALL HDPE PIPE	
ST-10	CB-7	ST MH-1	666.63	666.48	30.00'	0.50%	15" SMOOTH INTERIOR WALL HDPE PIPE	
ST-11	ST MH-1	ST MH-2	666.48	665.97	101.80'	0.50%	15" SMOOTH INTERIOR WALL HDPE PIPE	
ST-12	CB-8	CB-9	669.78	669.44	34.33'	1.00%	8" SDR 35 PVC PIPE	
ST-13	CB-9	CB-11	669.34	668.70	63.99'	1.00%	8" SDR 35 PVC PIPE	
ST-14	CB-10	CB-11	671.00	670.41	58.67'	1.00%	8" SDR 35 PVC PIPE	
ST-15	CB-11	ST MH-2	667.41	666.55	86.14'	1.00%	8" SDR 35 PVC PIPE	
ST-16	CB-12	ST MH-2	671.00	668.03	99.00'	3.00%	12" SMOOTH INTERIOR WALL HDPE PIPE	
ST-17	ST MH-2	ST MH-3	665.72	665.43	117.14'	0.25%	18" SMOOTH INTERIOR WALL HDPE PIPE	
ST-18	CB-13	CB-14	668.03	667.44	58.73'	1.00%	8" SDR 35 PVC PIPE	
ST-19	CB-14	CB-15	667.34	666.91	43.08'	1.00%	8" SDR 35 PVC PIPE	
ST-20	CB-15	CB-16	666.58	666.45	13.00'	1.00%	12" SMOOTH INTERIOR WALL HDPE PIPE	
ST-21	CB-16	ST MH-3	666.20	665.90	30.00'	1.00%	15" SMOOTH INTERIOR WALL HDPE PIPE	
ST-22	ST MH-3	ST MH-4	664.93	664.64	114.06'	0.25%	24" SMOOTH INTERIOR WALL HDPE PIPE	
ST-23	CB-17	CB-18	667.03	666.60	43.02'	1.00%	8" SDR 35 PVC PIPE	
ST-24	CB-18	CB-19	666.27	666.14	13.00'	1.00%	12" SMOOTH INTERIOR WALL HDPE PIPE	
ST-25	CB-19	ST MH-4	665.89	665.59	30.00'	1.00%	15" SMOOTH INTERIOR WALL HDPE PIPE	
ST-26	ST MH-4	FES-1	664.54	664.00	113.06'	0.48%	24" CLASS IV RCP	
ST-27	FES-2	CB-20	669.84	666.46	46.77'	7.23%	12" CLASS IV RCP	
ST-28	CB-20	CB-21	666.46	665.41	210.24'	0.50%	12" SMOOTH INTERIOR WALL HDPE PIPE	
ST-29	CB-21	FES-3	665.16	663.49	165.16'	1.01%	15" CLASS IV RCP	
ST-30	OS-1	EX ST INLT-3	661.00	660.92	28.33'	0.28%	15" CLASS IV RCP	
ST-31	OS-2	ST MH-5	662.00	661.11	177.12'	0.50%	18" SMOOTH INTERIOR WALL HDPE PIPE	
ST-32	FES-4	ST MH-5	666.22	666.15	6.78'	1.00%	12" CLASS IV RCP	
ST-33	ST MH-5	EX ST INLT-2	661.01	659.94	214.58'	0.50%	15" CLASS IV RCP	