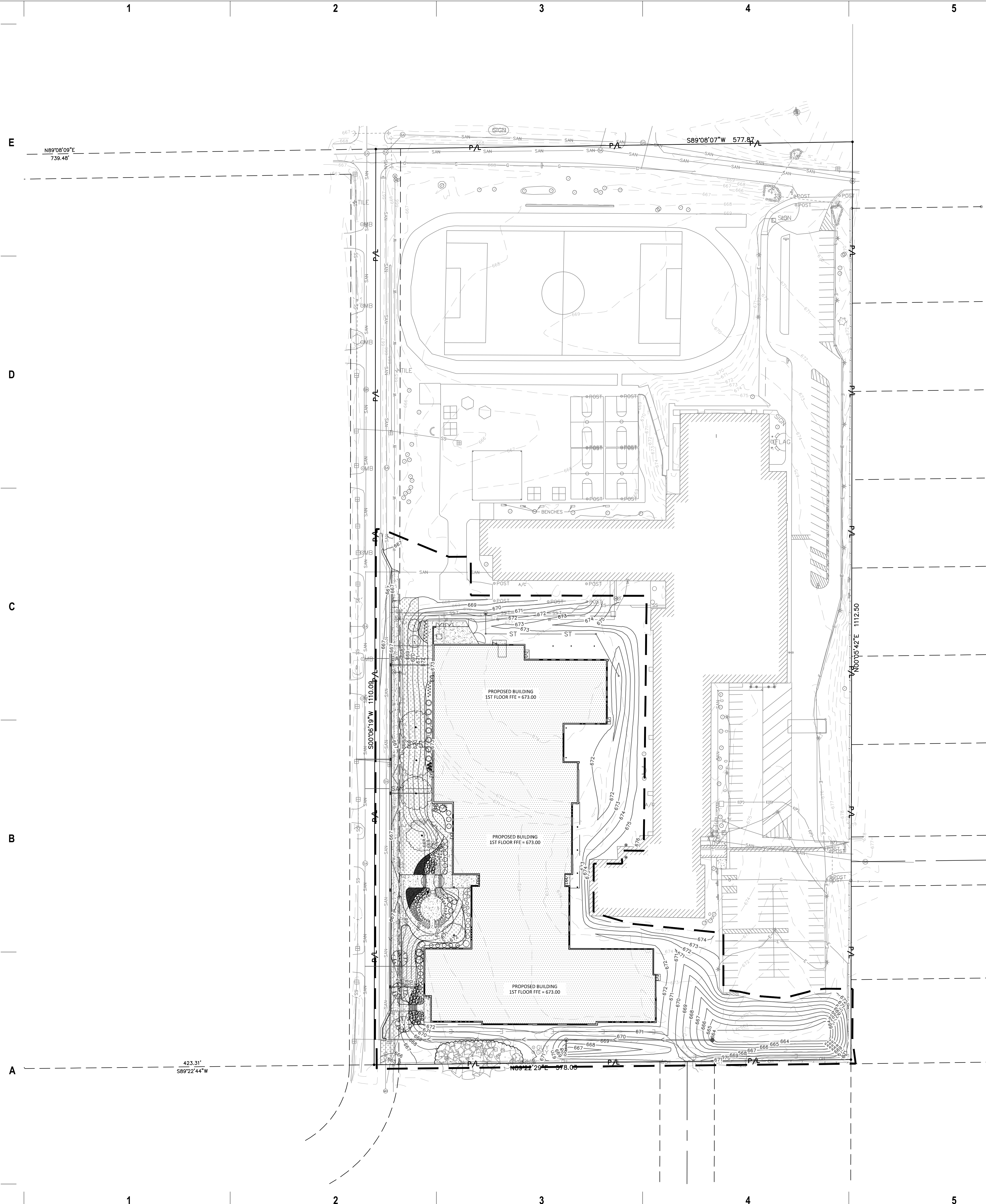


Landscape



milwaukee 333 East Chicago Street  
Milwaukee, Wisconsin 53202  
414.271.5350

madison 309 West Johnson Street, Suite 202  
Madison, Wisconsin 53703  
608.442.2550

denver 1859 Wynkoop Street, Suite 700  
Denver, Colorado 80202  
303.566.4500

PROJECT INFORMATION

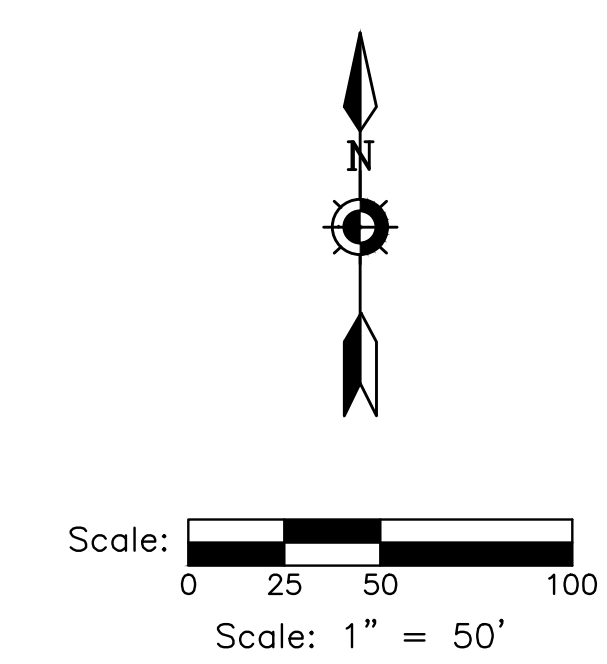
**BAYSIDE MIDDLE SCHOOL**

601 E ELLSWORTH LN, BAYSIDE, WI 53217

ISSUANCE AND REVISIONS

| DATE       | DESCRIPTION             |
|------------|-------------------------|
| 09/16/2022 | 50% DESIGN DEVELOPMENT  |
| 11/18/2022 | 75% DESIGN DEVELOPMENT  |
| 11/28/2022 | ARC SUBMISSION          |
| 12/09/2022 | 100% DESIGN DEVELOPMENT |
| 01/16/2022 | ARC SUBMISSION          |

KEY PLAN



**DIGGERS HOTLINE**  
Dial 811 or (800)242-8511  
www.DiggersHotline.com

**HATCH LEGEND**

|  |  |                    |
|--|--|--------------------|
|  | PROJECT LIMITS   |                    |
|  | AREAS DISTURBED BY CONSTRUCTION TO BE RESTORED WITH MINIMUM 4" TOPSOIL, KENTUCKY BLUE GRASS SEED, FERTILIZER, AND MULCH (TYP). USE SALVAGED TOPSOIL OR IMPORT TOPSOIL IF REQUIRED.     |                    |
|  | AREAS DISTURBED BY CONSTRUCTION TO BE RESTORED WITH MINIMUM 4" TOPSOIL, BIRD AND BUTTERFLY NATIVE SEED MIX, AND MULCH (TYP). USE SALVAGED TOPSOIL OR IMPORT TOPSOIL IF REQUIRED.       | 13 15<br>L203 L203 |
|  | MIX 1: 3" PLUG PLANTINGS IN BIORETENTION AREA. REFER TO CIVIL AND LANDSCAPE DETAILS. PLUGS TO BE PLANTED 12-INCHES O.C.  | 1 1<br>L201 L201   |
|  | AREAS DISTURBED BY CONSTRUCTION TO BE RESTORED WITH MINIMUM 4" TOPSOIL, STORMWATER BIOFILTRATION NATIVE SEED MIX, AND MULCH (TYP). USE SALVAGED TOPSOIL OR IMPORT TOPSOIL IF REQUIRED. | 14 15<br>L203 L203 |
|  | KAFKA GRANITE STABILIZED PATHWAY MIX<br>MANUFACTURER: KAFKA GRANITE<br>COLOR: TO BE DETERMINED BY OWNER (OR APPROVED EQUAL)  | 9 9<br>L202 L202   |

SHEET INFORMATION

**PROGRESS DOCUMENTS NOT FOR CONSTRUCTION**

These documents reflect progress and intent and may be subject to change, including additional detail. These are not final construction documents and shall not be used for final bidding or construction-related purposes.

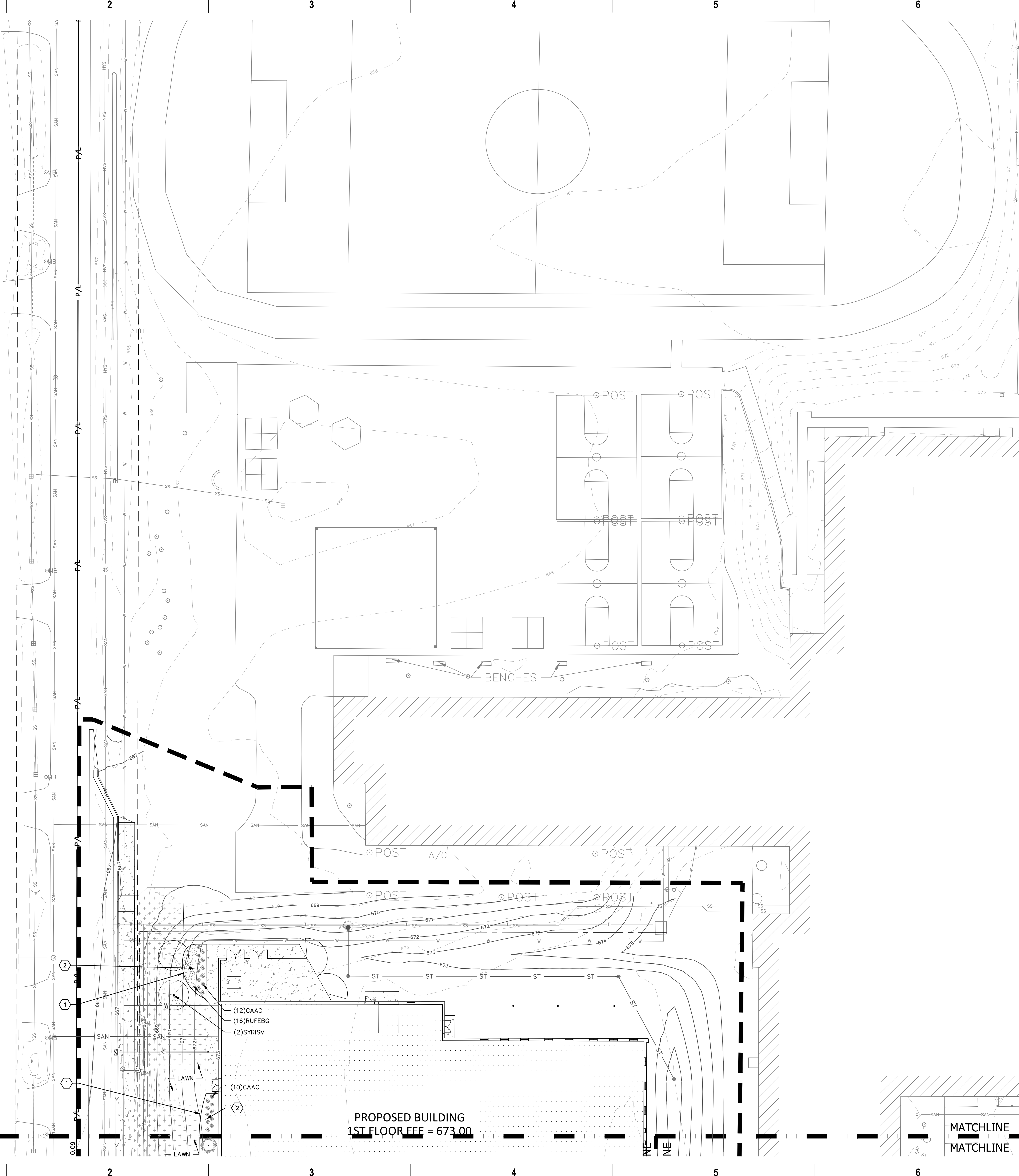
PROJECT MANAGER TS

PROJECT NUMBER 19314-02

**OVERALL SITE LANDSCAPE PLAN - PHASE 1**

**L101-1**





milwaukee 333 East Chicago Street  
Milwaukee, Wisconsin 53202  
414.271.5330

madison 309 West Johnson Street, Suite 202  
Madison, Wisconsin 53703  
608.442.2350

denver 1899 Wynkoop Street, Suite 700  
Denver, Colorado 80202  
303.566.4500

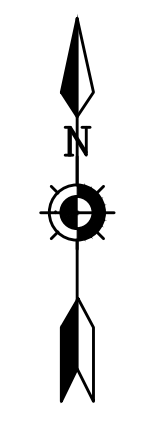
PROJECT INFORMATION

**BAYSIDE MIDDLE SCHOOL**

601 E ELLSWORTH LN, BAYSIDE, WI 53217

ISSUANCE AND REVISIONS

| DATE       | DESCRIPTION             |
|------------|-------------------------|
| 09/16/2022 | 50% DESIGN DEVELOPMENT  |
| 11/18/2022 | 75% DESIGN DEVELOPMENT  |
| 11/28/2022 | ARC SUBMISSION          |
| 12/09/2022 | 100% DESIGN DEVELOPMENT |
| 01/16/2022 | ARC SUBMISSION          |

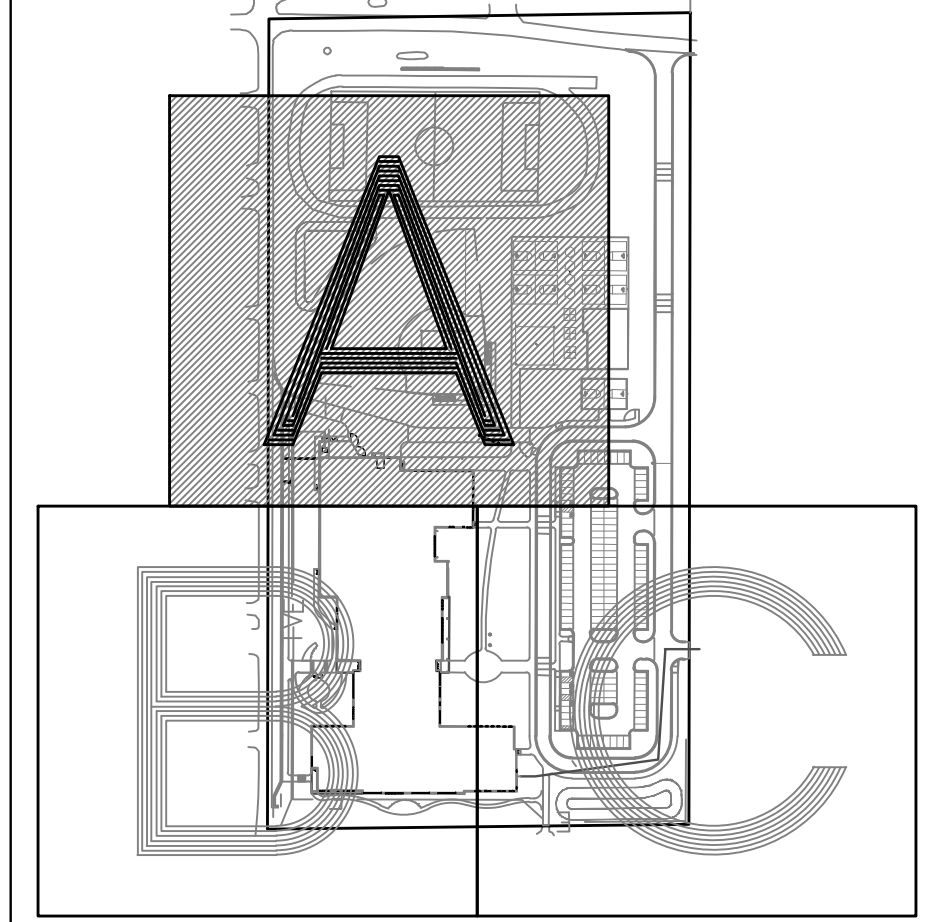


Scale: 1" = 20'



Dial 811 or (800)242-8511  
www.DiggersHotline.com

VICINITY MAP



HATCH LEGEND

|  |   |  |  |
|--|---|--|--|
|  | PROJECT LIMITS  |  | ALUMINUM EDGING AT PLANTING BED                                      |
|  | AREAS DISTURBED BY CONSTRUCTION TO BE RESTORED WITH MINIMUM 4" TOPSOIL, KENTUCKY BLUE GRASS SEED, FERTILIZER, AND MULCH (TYP). USE SALVAGED TOPSOIL OR IMPORT TOPSOIL IF REQUIRED.      |  | SHREDDED HARDWOOD MULCH IN PLANTING BED                              |
|  | AREAS DISTURBED BY CONSTRUCTION TO BE RESTORED WITH MINIMUM 4" TOPSOIL, BIRD AND BUTTERFLY NATIVE SEED MIX, AND MULCH (TYP). USE SALVAGED TOPSOIL OR IMPORT TOPSOIL IF REQUIRED.        |  | OUTCROPPING STONE RETAINING WALL                                     |
|  | MIX 1: 3" PLUG PLANTINGS IN BIORETENTION AREA. REFER TO CIVIL AND LANDSCAPE DETAILS. PLUGS TO BE PLANTED 12-INCHES O.C.   |  | LIGHT POLES (SHOWN FOR REFERENCE ONLY - SEE SITE LIGHTING PLAN)      |
|  | AREAS DISTURBED BY CONSTRUCTION TO BE RESTORED WITH MINIMUM 4" TOPSOIL, STORMWATER BIOPFILTRATION NATIVE SEED MIX, AND MULCH (TYP). USE SALVAGED TOPSOIL OR IMPORT TOPSOIL IF REQUIRED. |  | STEEL EDGING AT KAFKA GRANITE STABILIZED GRANITE PATHWAY MIX & MULCH |
|  | KAFKA GRANITE STABILIZED PATHWAY MIX MANUFACTURER: KAFKA GRANITE. COLOR: TO BE DETERMINED BY OWNER (OR APPROVED EQUAL)  |  | KAFKA GRANITE STABILIZED GRANITE PATHWAY MIX AT SIDEWALK             |
|  | PLANT "CODE" REFERENCES TO THE PLANT SCHEDULE. QUANTITY OF PLANTS IN THE PLANT GROUPING LEADER LINE. PLANT SYMBOL (SYMBOL VARIES)   |  | STEEL EDGING AT KAFKA GRANITE STABILIZED GRANITE PATHWAY MIX & LAWN  |

KEY INDEX

|  |  |  |  |
|--|--|--|--|
|  | ALUMINUM EDGING AT PLANTING BED                                      |  | ALUMINUM EDGING AT PLANTING BED                                      |
|  | SHREDDED HARDWOOD MULCH IN PLANTING BED                              |  | SHREDDED HARDWOOD MULCH IN PLANTING BED                              |
|  | OUTCROPPING STONE RETAINING WALL                                     |  | OUTCROPPING STONE RETAINING WALL                                     |
|  | LIGHT POLES (SHOWN FOR REFERENCE ONLY - SEE SITE LIGHTING PLAN)      |  | LIGHT POLES (SHOWN FOR REFERENCE ONLY - SEE SITE LIGHTING PLAN)      |
|  | STEEL EDGING AT KAFKA GRANITE STABILIZED GRANITE PATHWAY MIX & MULCH |  | STEEL EDGING AT KAFKA GRANITE STABILIZED GRANITE PATHWAY MIX & MULCH |
|  | KAFKA GRANITE STABILIZED GRANITE PATHWAY MIX AT SIDEWALK             |  | KAFKA GRANITE STABILIZED GRANITE PATHWAY MIX AT SIDEWALK             |
|  | STEEL EDGING AT KAFKA GRANITE STABILIZED GRANITE PATHWAY MIX & LAWN  |  | STEEL EDGING AT KAFKA GRANITE STABILIZED GRANITE PATHWAY MIX & LAWN  |

KEY PLAN



7711 N. Port Washington Road  
Milwaukee, Wisconsin 53217  
kapurinc.com

SHEET INFORMATION

PROGRESS DOCUMENTS NOT FOR CONSTRUCTION

These documents reflect progress and intent and may be subject to change, including additional details. These are not final construction documents and shall not be used for final bidding or construction-related purposes.

PROJECT MANAGER TS  
PROJECT NUMBER 19314-02

SITE LANDSCAPE PLAN - PHASE 1 - AREA A

**L101-1A**



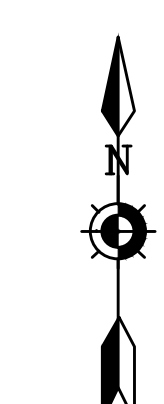
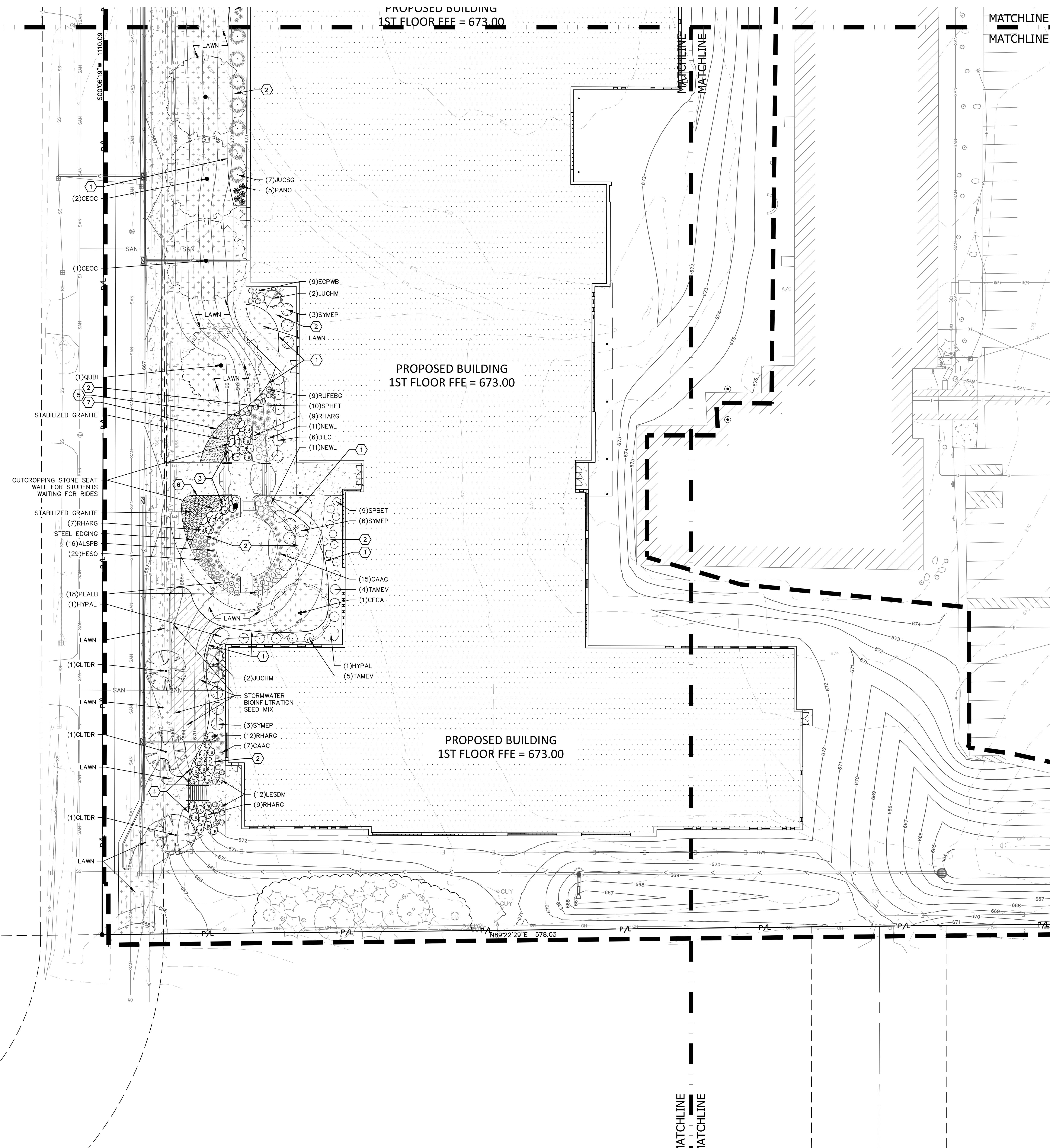
MATCHLINE  
MATCHLINE

PROPOSED BUILDING  
1ST FLOOR FFE = 673.00

MATCHLINE  
MATCHLINE

PROPOSED BUILDING  
1ST FLOOR FFE = 673.00

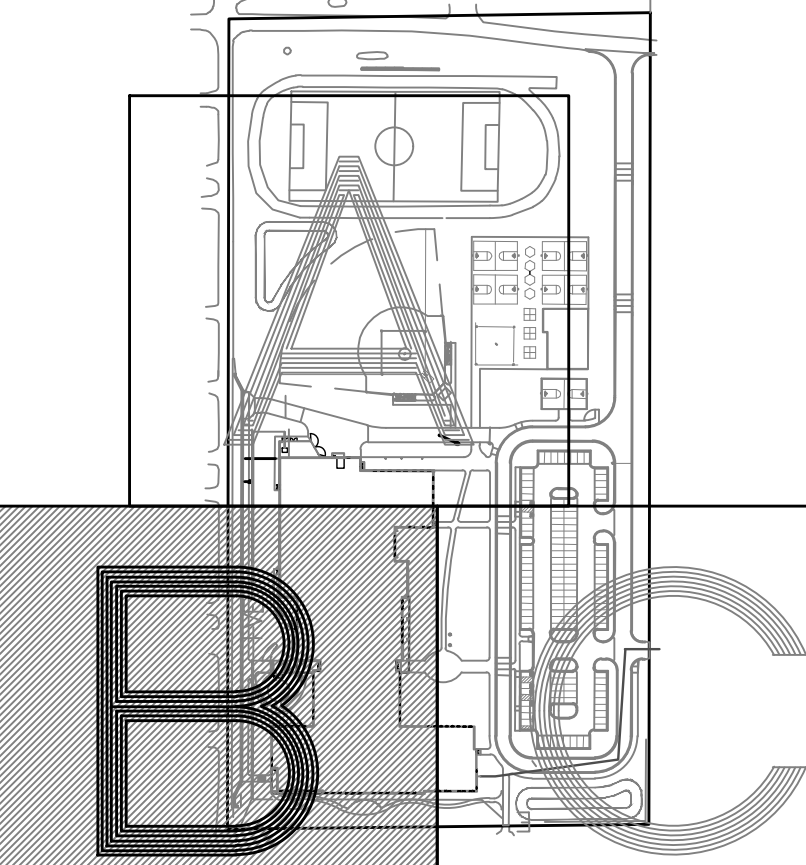
PROPOSED BUILDING  
1ST FLOOR FFE = 673.00



Scale: 0 10 20 40  
Scale: 1" = 20'

**DIGGERS HOTLINE**  
Dial 811 or (800)242-8511  
www.DiggersHotline.com

VICINITY MAP



HATCH LEGEND

- PROJECT LIMITS
- AREAS DISTURBED BY CONSTRUCTION TO BE RESTORED WITH MINIMUM 4" TOPSOIL, KENTUCKY BLUE GRASS SEED, FERTILIZER, AND MULCH (TYP). USE SALVAGED TOPSOIL OR IMPORT TOPSOIL IF REQUIRED.
- AREAS DISTURBED BY CONSTRUCTION TO BE RESTORED WITH MINIMUM 4" TOPSOIL, BIRD AND BUTTERFLY NATIVE SEED MIX, AND MULCH (TYP). USE SALVAGED TOPSOIL OR IMPORT TOPSOIL IF REQUIRED.
- MIX 1: 3" PLUG PLANTINGS IN BIORETENTION AREA. REFER TO CIVIL AND LANDSCAPE DETAILS. PLUGS TO BE PLANTED 12-INCHES O.C.
- AREAS DISTURBED BY CONSTRUCTION TO BE RESTORED WITH MINIMUM 4" TOPSOIL, STORMWATER BIOINFILTRATION NATIVE SEED MIX, AND MULCH (TYP). USE SALVAGED TOPSOIL OR IMPORT TOPSOIL IF REQUIRED.
- KAFKA GRANITE STABILIZED PATHWAY MIX MANUFACTURER: KAFKA GRANITE. COLOR: TO BE DETERMINED BY OWNER (OR APPROVED EQUAL)
- PLANT "CODE" REFERENCES TO THE PLANT SCHEDULE. QUANTITY OF PLANTS IN THE PLANT GROUPING LEADER LINE. PLANT SYMBOL (SYMBOL VARIES)

KEY INDEX

- 1 ALUMINUM EDGING AT PLANTING BED
- 2 SHREDDED HARDWOOD MULCH IN PLANTING BED
- 3 OUTCROPPING STONE RETAINING WALL
- 4 LIGHT POLES (SHOWN FOR REFERENCE ONLY - SEE SITE LIGHTING PLAN)
- 5 STEEL EDGING AT KAFKA GRANITE STABILIZED GRANITE PATHWAY MIX & MULCH
- 6 KAFKA GRANITE STABILIZED GRANITE PATHWAY MIX AT SIDEWALK
- 7 STEEL EDGING AT KAFKA GRANITE STABILIZED GRANITE PATHWAY MIX & LAWN
- 8 KAFKA GRANITE STABILIZED GRANITE PATHWAY MIX AT SIDEWALK
- 9 KAFKA GRANITE STABILIZED GRANITE PATHWAY MIX (OR APPROVED EQUAL)
- 10 H2PM
- 11 OUTCROPPING STONE RETAINING WALL
- 12 L202
- 13 L203
- 14 L203
- 15 L203
- 16 L201



milwaukee 333 East Chicago Street  
Milwaukee, Wisconsin 53202  
414.271.5350

madison 309 West Johnson Street, Suite 202  
Madison, Wisconsin 53703  
608.442.2550

denver 1899 Wynkoop Street, Suite 700  
Denver, Colorado 80202  
303.566.4500

PROJECT INFORMATION  
**BAYSIDE MIDDLE SCHOOL**

601 E ELLSWORTH LN, BAYSIDE, WI 53217

ISSUANCE AND REVISIONS

| DATE       | DESCRIPTION             |
|------------|-------------------------|
| 09/16/2022 | 50% DESIGN DEVELOPMENT  |
| 11/18/2022 | 75% DESIGN DEVELOPMENT  |
| 11/28/2022 | ARC SUBMISSION          |
| 12/09/2022 | 100% DESIGN DEVELOPMENT |
| 01/16/2023 | ARC SUBMISSION          |

KEY PLAN

7711 N. Port Washington Road  
Milwaukee, Wisconsin 53217  
kapurinc.com

SHEET INFORMATION

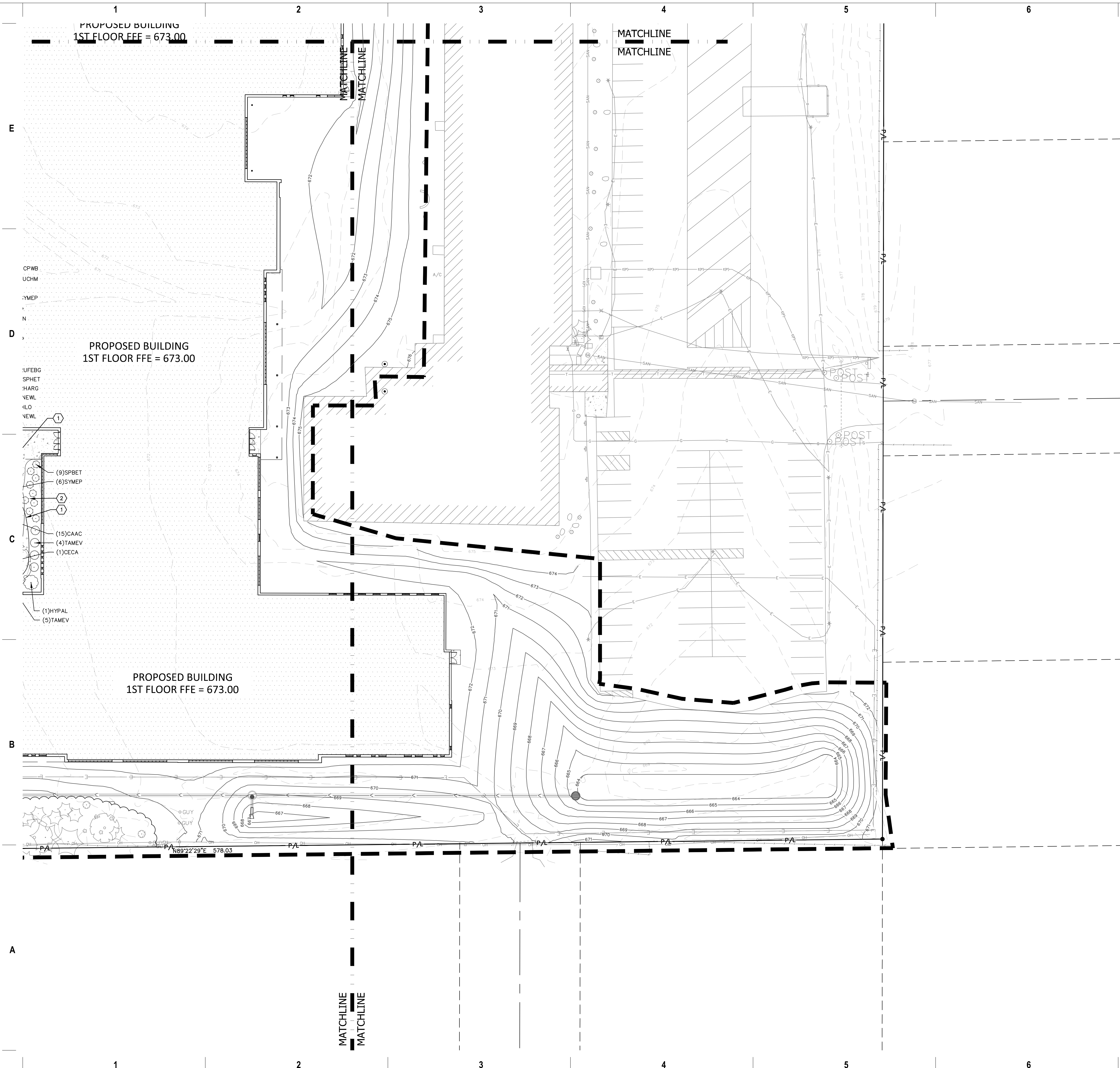
**PROGRESS DOCUMENTS NOT FOR CONSTRUCTION**

These documents reflect progress and intent and may be subject to change, including additional detail. These are not final construction documents and shall not be used for final bidding or construction-related purposes.

PROJECT MANAGER TS  
PROJECT NUMBER 19314-02  
SITE LANDSCAPE PLAN - PHASE 1 - AREA B

**L101-1B**





milwaukee 333 East Chicago Street  
Milwaukee, Wisconsin 53202  
414.271.5350

madison 309 West Johnson Street, Suite 202  
Madison, Wisconsin 53703  
608.442.2550

denver 1899 Wynkoop Street, Suite 700  
Denver, Colorado 80202  
303.566.4500

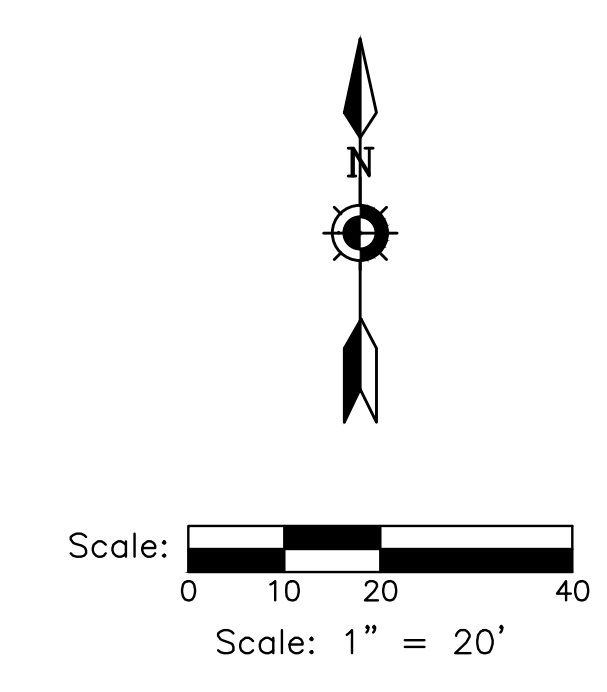
PROJECT INFORMATION

**BAYSIDE MIDDLE SCHOOL**

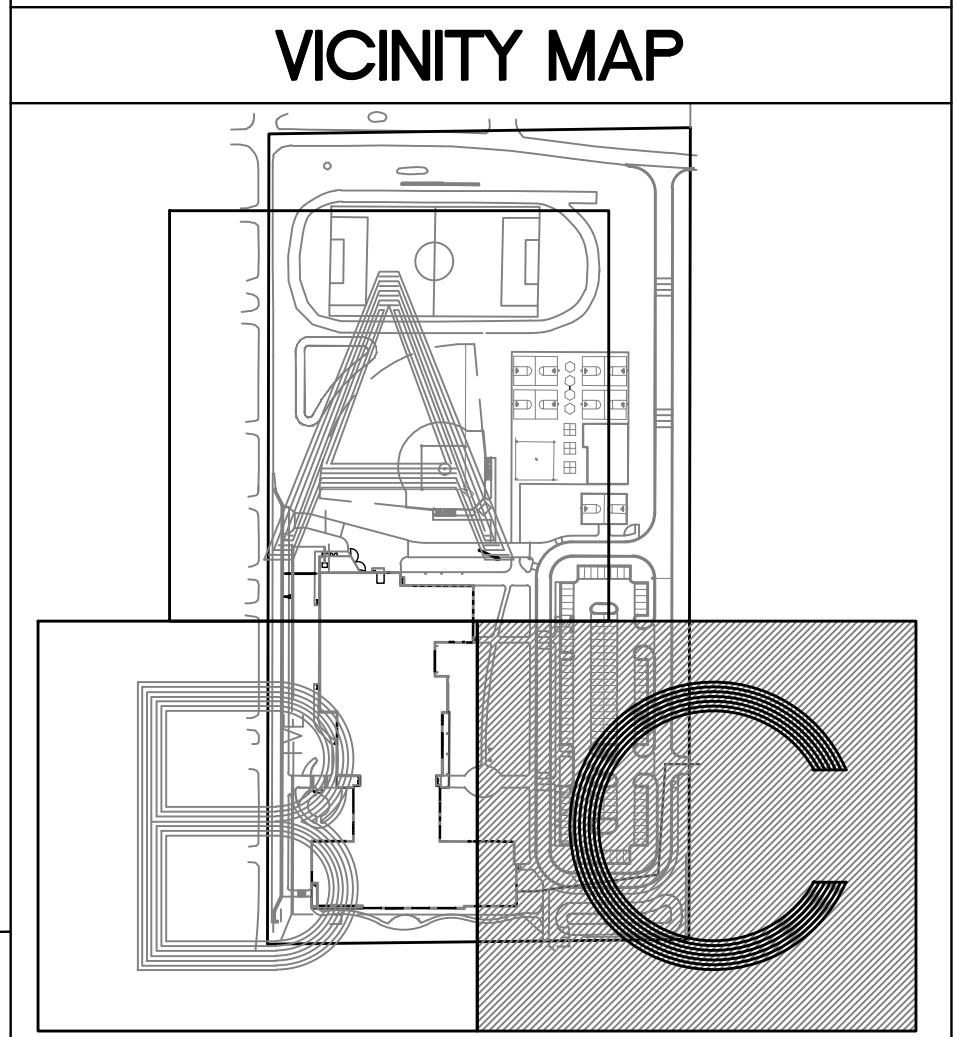
601 E ELLSWORTH LN, BAYSIDE, WI 53217

ISSUANCE AND REVISIONS

| DATE       | DESCRIPTION             |
|------------|-------------------------|
| 09/16/2022 | 50% DESIGN DEVELOPMENT  |
| 11/18/2022 | 75% DESIGN DEVELOPMENT  |
| 11/28/2022 | ARC SUBMISSION          |
| 12/09/2022 | 100% DESIGN DEVELOPMENT |
| 01/16/2023 | ARC SUBMISSION          |



**DIGGERS HOTLINE**  
Dial 811 or (800)242-8511  
www.DiggersHotline.com



**HATCH LEGEND**

|  |  |  |    |  |    |
|--|--|--|----|--|----|
|  | PROJECT LIMITS   |  | 13 |  | 15 |
|  | AREAS DISTURBED BY CONSTRUCTION TO BE RESTORED WITH MINIMUM 4" TOPSOIL, KENTUCKY BLUE GRASS SEED, FERTILIZER, AND MULCH (TYP). USE SALVAGED TOPSOIL OR IMPORT TOPSOIL IF REQUIRED.       |  | 14 |  | 15 |
|  | AREAS DISTURBED BY CONSTRUCTION TO BE RESTORED WITH MINIMUM 4" TOPSOIL, BIRD AND BUTTERFLY NATIVE SEED MIX, AND MULCH (TYP). USE SALVAGED TOPSOIL OR IMPORT TOPSOIL IF REQUIRED.         |  | 1  |  | 2  |
|  | MIX 1: 3" PLUG PLANTINGS IN BIO-ORIENTATION AREA. REFER TO CIVIL AND LANDSCAPE DETAILS. PLUGS TO BE PLANTED 12-INCHES O.C.   |  | 14 |  | 15 |
|  | AREAS DISTURBED BY CONSTRUCTION TO BE RESTORED WITH MINIMUM 4" TOPSOIL, STORMWATER BIOINFILTRATION NATIVE SEED MIX, AND MULCH (TYP). USE SALVAGED TOPSOIL OR IMPORT TOPSOIL IF REQUIRED. |  | 9  |  | 10 |
|  | KAFKA GRANITE STABILIZED PATHWAY MIX MANUFACTURER: KAFKA GRANITE. COLOR: TO BE DETERMINED BY OWNER (OR APPROVED EQUAL)   |  | 12 |  | 13 |

**KEY INDEX**

|  |  |  |    |
|--|--|--|----|
|  | 1 ALUMINUM EDGING AT PLANTING BED                                      |  | 12 |
|  | 2 SHREDDED HARDWOOD MULCH IN PLANTING BED                              |  | 7  |
|  | 3 OUTCROPPING STONE RETAINING WALL                                     |  | 11 |
|  | 4 LIGHT POLES (SHOWN FOR REFERENCE ONLY - SEE SITE LIGHTING PLAN)      |  | 10 |
|  | 5 STEEL EDGING AT KAFKA GRANITE STABILIZED GRANITE PATHWAY MIX & MULCH |  | 8  |
|  | 6 KAFKA GRANITE STABILIZED GRANITE PATHWAY MIX AT SIDEWALK             |  | 13 |
|  | 7 STEEL EDGING AT KAFKA GRANITE STABILIZED GRANITE PATHWAY MIX & LAWN  |  | 13 |

KEY PLAN

**kapur**

7711 N. Port Washington Road  
Milwaukee, Wisconsin 53217  
kapurinc.com

SHEET INFORMATION

**PROGRESS DOCUMENTS NOT FOR CONSTRUCTION**

These documents reflect progress and intent and may be subject to change, including additional detail. These are not final construction documents and shall not be used for final bidding or construction-related purposes.

PROJECT MANAGER TS

PROJECT NUMBER 19314-02

**SITE LANDSCAPE PLAN - PHASE 1 - AREA C**

**L101-1C**

© 2022 Eppstein Uhen Architects, Inc.





milwaukee 333 East Chicago Street  
Milwaukee, Wisconsin 53202  
414.271.5350

madison 309 West Johnson Street, Suite 202  
Madison, Wisconsin 53703  
608.442.2550

denver 1899 Wynkoop Street, Suite 700  
Denver, Colorado 80202  
303.566.4500

PROJECT INFORMATION

**BAYSIDE MIDDLE SCHOOL**

601 E ELLSWORTH LN, BAYSIDE, WI 53217

ISSUANCE AND REVISIONS

| DATE       | DESCRIPTION             |
|------------|-------------------------|
| 09/16/2022 | 50% DESIGN DEVELOPMENT  |
| 11/18/2022 | 75% DESIGN DEVELOPMENT  |
| 11/28/2022 | ARC SUBMISSION          |
| 12/09/2022 | 100% DESIGN DEVELOPMENT |
| 01/16/2022 | ARC SUBMISSION          |

KEY PLAN



SHEET INFORMATION

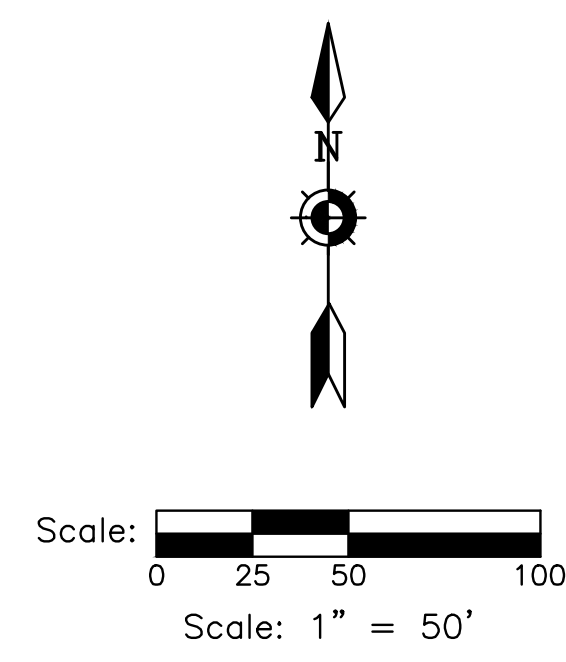
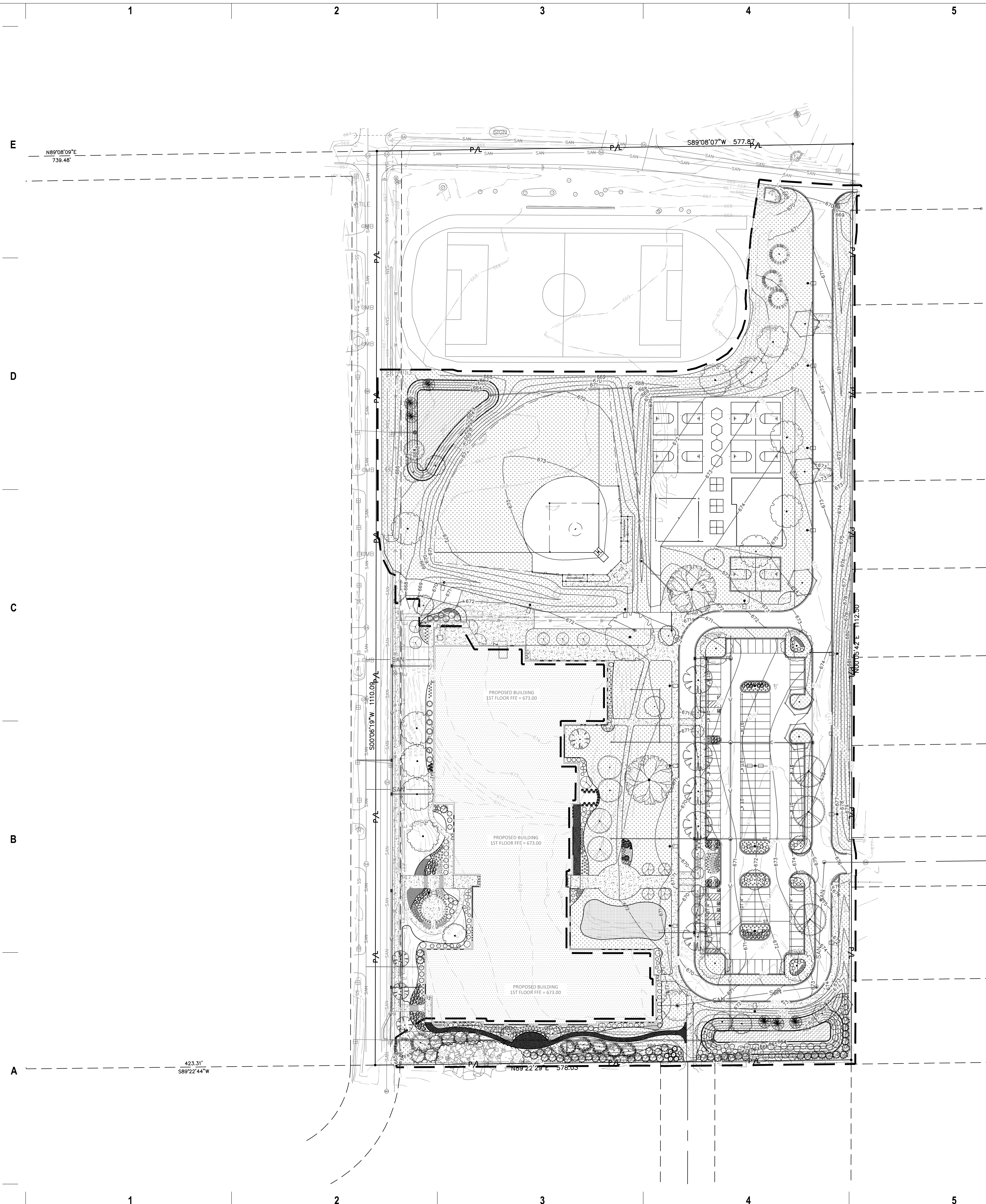
**PROGRESS DOCUMENTS NOT FOR CONSTRUCTION**

These documents reflect progress and intent and may be subject to change, including additional detail. These are not final construction documents and shall not be used for final bidding or construction-related purposes.

PROJECT MANAGER TS  
PROJECT NUMBER 19314-02

OVERALL SITE LANDSCAPE PLAN - PHASE 2

**L101-2**

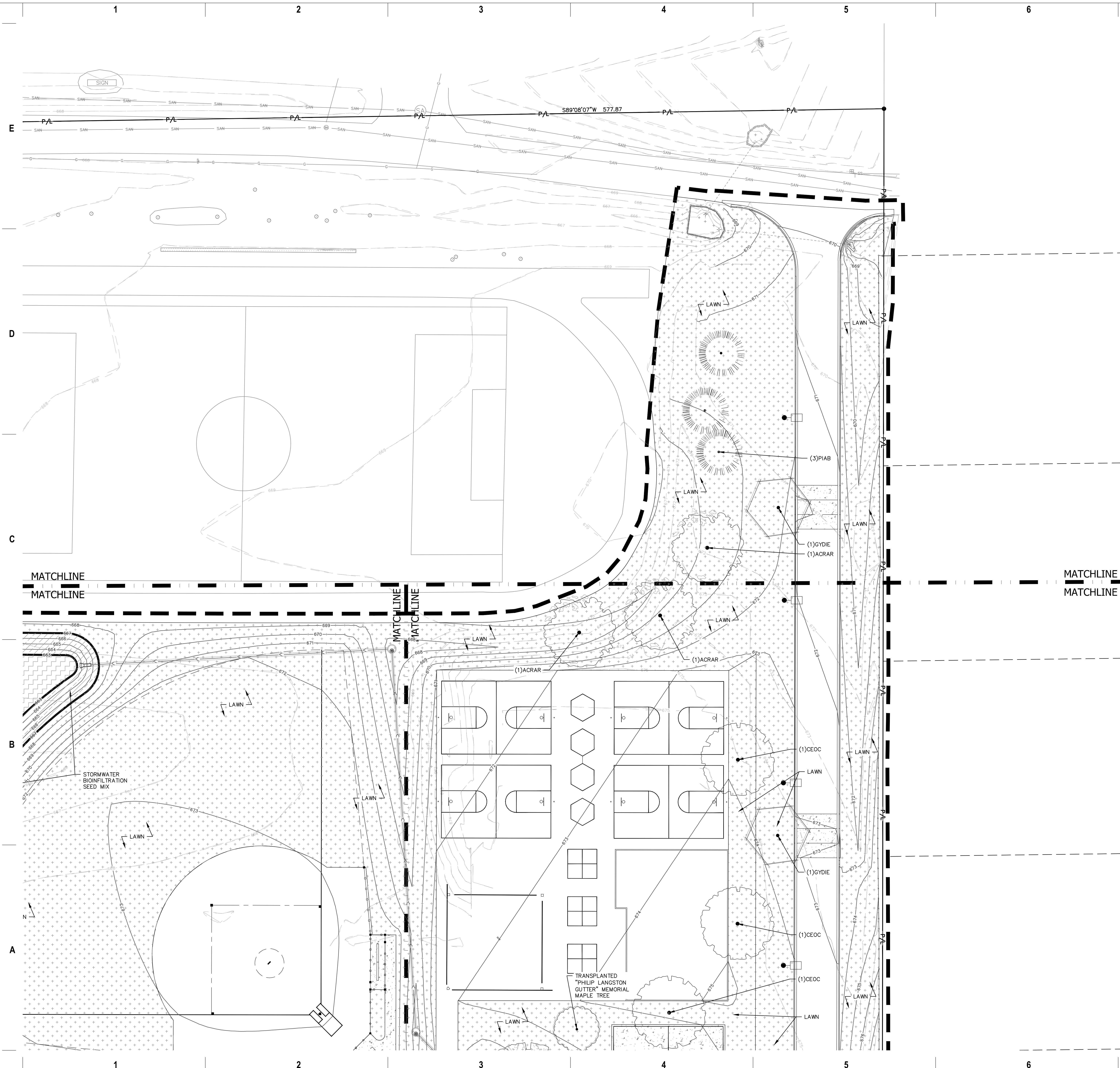


**DIGGERS HOTLINE**  
Dial 811 or (800)242-8511  
www.DiggersHotline.com

**HATCH LEGEND**

|  |  |                 |
|--|--|-----------------|
|  | PROJECT LIMITS   |                 |
|  | AREAS DISTURBED BY CONSTRUCTION TO BE RESTORED WITH MINIMUM 4" TOPSOIL, KENTUCKY BLUE GRASS SEED, FERTILIZER, AND MULCH (TYP). USE SALVAGED TOPSOIL OR IMPORT TOPSOIL IF REQUIRED.     |                 |
|  | AREAS DISTURBED BY CONSTRUCTION TO BE RESTORED WITH MINIMUM 4" TOPSOIL, BIRD AND BUTTERFLY NATIVE SEED MIX, AND MULCH (TYP). USE SALVAGED TOPSOIL OR IMPORT TOPSOIL IF REQUIRED.       | 13 L203 15 L203 |
|  | MIX 1: 3" PLUG PLANTINGS IN BIORETENTION AREA. REFER TO CIVIL AND LANDSCAPE DETAILS. PLUGS TO BE PLANTED 12" ON CENTER.  | 1 L201          |
|  | AREAS DISTURBED BY CONSTRUCTION TO BE RESTORED WITH MINIMUM 4" TOPSOIL, STORMWATER BIOFILTRATION NATIVE SEED MIX, AND MULCH (TYP). USE SALVAGED TOPSOIL OR IMPORT TOPSOIL IF REQUIRED. | 14 L203 15 L203 |
|  | KAFKA GRANITE STABILIZED PATHWAY MIX<br>MANUFACTURER: KAFKA GRANITE<br>COLOR: TO BE DETERMINED BY OWNER (OR APPROVED EQUAL)  | 9 L202          |





milwaukee 333 East Chicago Street  
Milwaukee, Wisconsin 53202  
414.271.5350

madison 309 West Johnson Street, Suite 202  
Madison, Wisconsin 53703  
608.442.2550

denver 1899 Wynkoop Street, Suite 700  
Denver, Colorado 80202  
303.556.4500

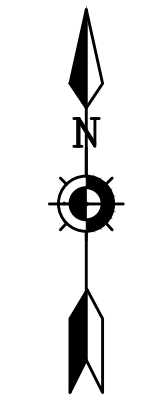
PROJECT INFORMATION

**BAYSIDE MIDDLE SCHOOL**

601 E ELLSWORTH LN, BAYSIDE, WI 53217

ISSUANCE AND REVISIONS

| DATE       | DESCRIPTION             |
|------------|-------------------------|
| 09/16/2022 | 50% DESIGN DEVELOPMENT  |
| 11/18/2022 | 75% DESIGN DEVELOPMENT  |
| 11/28/2022 | ARC SUBMISSION          |
| 12/09/2022 | 100% DESIGN DEVELOPMENT |
| 01/16/2023 | ARC SUBMISSION          |

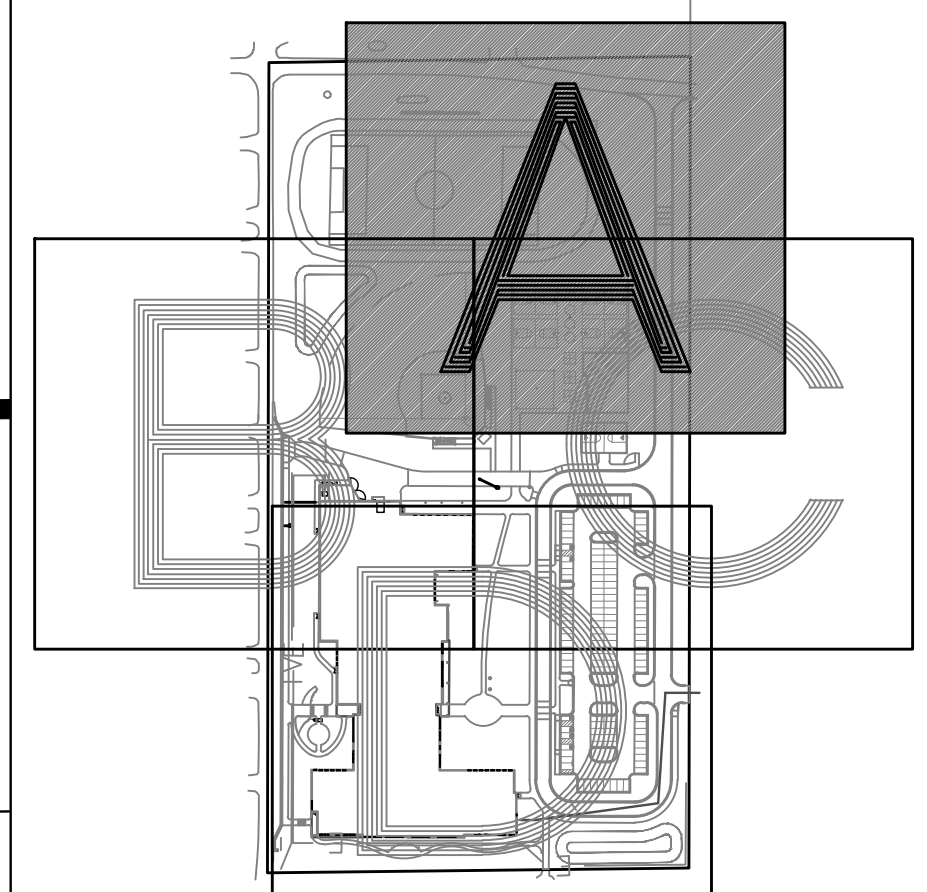


Scale: 0 10 20 40  
Scale: 1" = 20'



Dial 811 or (800)242-8511  
www.DiggersHotline.com

VICINITY MAP



HATCH LEGEND

- PROJECT LIMITS
- AREAS DISTURBED BY CONSTRUCTION TO BE RESTORED WITH MINIMUM 4" TOPSOIL, KENTUCKY BLUE GRASS SEED, FERTILIZER, AND MULCH (TYP). USE SALVAGED TOPSOIL OR IMPORT TOPSOIL IF REQUIRED.
- AREAS DISTURBED BY CONSTRUCTION TO BE RESTORED WITH MINIMUM 4" TOPSOIL, BIRD AND BUTTERFLY NATIVE SEED MIX, AND MULCH (TYP). USE SALVAGED TOPSOIL OR IMPORT TOPSOIL IF REQUIRED.
- MIX 1: 3" PLUG PLANTINGS IN BIORETENTION AREA. REFER TO CIVIL AND LANDSCAPE DETAILS. PLUGS TO BE PLANTED 12-INCHES O.C.
- AREAS DISTURBED BY CONSTRUCTION TO BE RESTORED WITH MINIMUM 4" TOPSOIL, STORMWATER BIOFILTRATION NATIVE SEED MIX, AND MULCH (TYP). USE SALVAGED TOPSOIL OR IMPORT TOPSOIL IF REQUIRED.
- KAFKA GRANITE STABILIZED PATHWAY MIX MANUFACTURER: KAFKA GRANITE. COLOR: TO BE DETERMINED BY OWNER (OR APPROVED EQUAL)
- (10)HEPM
- PLANT "CODE" REFERENCES TO THE PLANT SCHEDULE. QUANTITY OF PLANTS IN THE PLANT GROUPING LEADER LINE.
- PLANT SYMBOL (SYMBOL VARIES)

KEY INDEX

|   |  |    |        |
|---|--|----|--------|
| 1 | ALUMINUM EDGING AT PLANTING BED                                      | 12 | (L202) |
| 2 | SHREDED HARDWOOD MULCH IN PLANTING BED                               | 7  | (L201) |
| 3 | OUTCROPPING STONE RETAINING WALL                                     | 11 | (L202) |
| 4 | LIGHT POLES (SHOWN FOR REFERENCE ONLY - SEE SITE LIGHTING PLAN)      | 10 | (L202) |
| 5 | STEEL EDGING AT KAFKA GRANITE STABILIZED GRANITE PATHWAY MIX & MULCH | 8  | (L202) |
| 6 | KAFKA GRANITE STABILIZED GRANITE PATHWAY MIX AT SIDEWALK             | 13 | (L202) |
| 7 | STEEL EDGING AT KAFKA GRANITE STABILIZED GRANITE PATHWAY MIX & LAWN  |    |        |

KEY PLAN



7711 N. Port Washington Road  
Milwaukee, Wisconsin 53217  
kapurinc.com

SHEET INFORMATION

**PROGRESS DOCUMENTS NOT FOR CONSTRUCTION**

These documents reflect progress and intent and may be subject to change, including additional detail. These are not final construction documents and shall not be used for final bidding or construction-related purposes.

PROJECT MANAGER TS  
PROJECT NUMBER 19314-02

SITE LANDSCAPE PLAN - PHASE 2 - AREA A

**L101-2A**



1

2

3

4

5

6

7

E

D

C

B

A

1

2

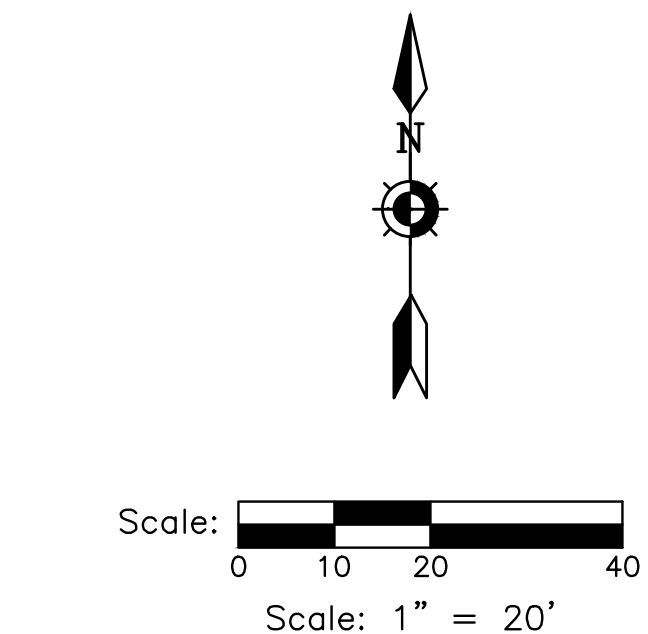
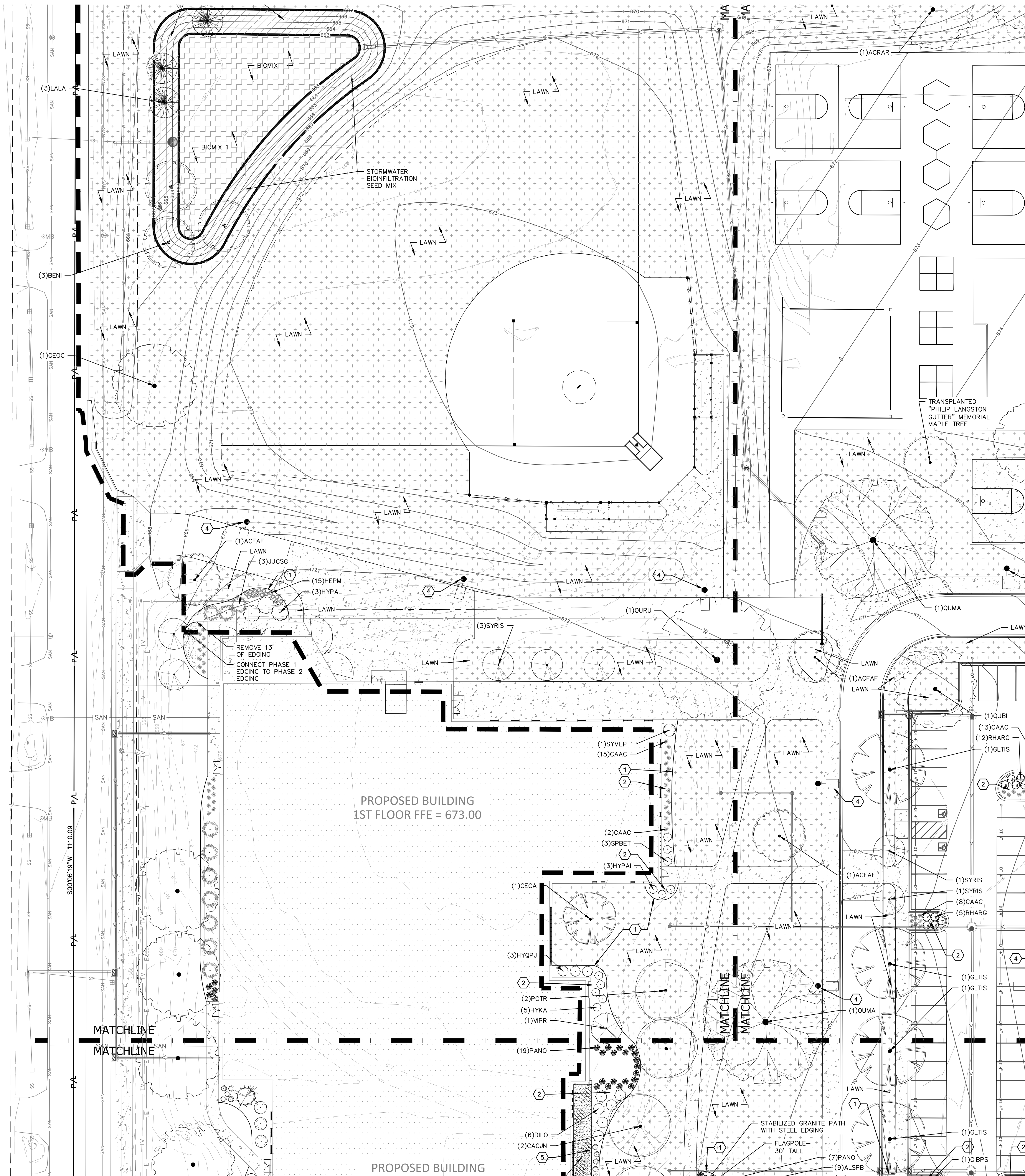
3

4

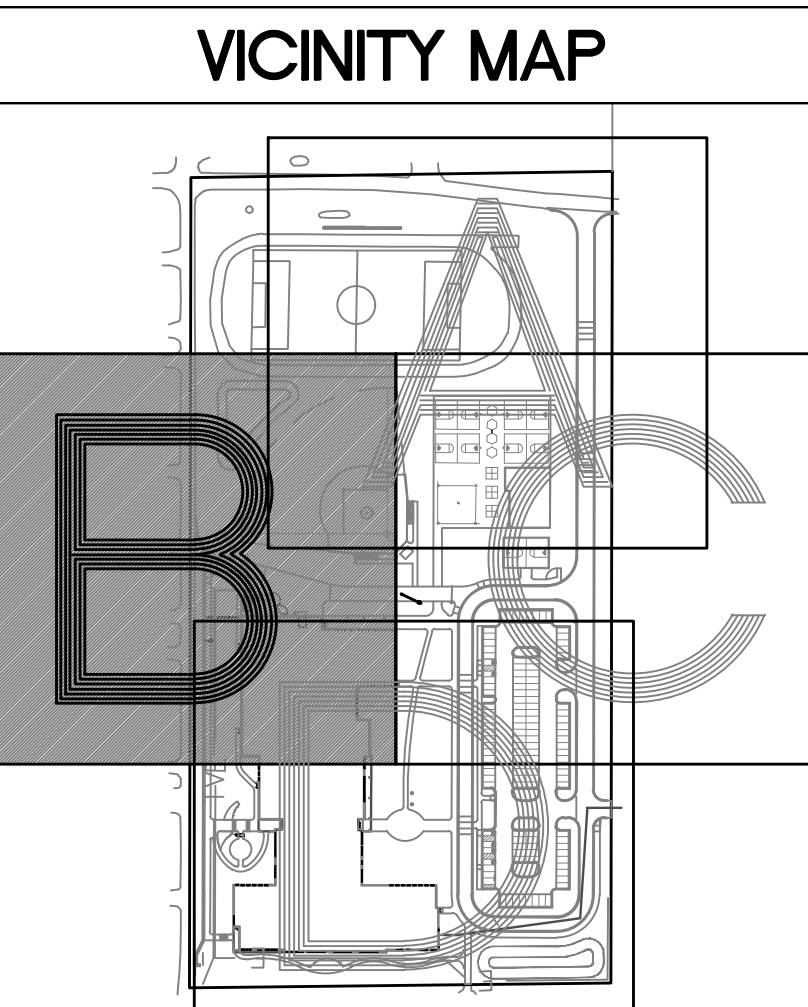
5

6

7



**DIGGERSHOTLINE**  
 Dial 811 or (800)242-8511  
 www.DiggersHotline.com



**HATCH LEGEND**

|          |  |          |      |      |
|----------|--|----------|------|------|
| [Symbol] | PROJECT LIMITS   | [Symbol] | 13   | 15   |
| [Symbol] | AREAS DISTURBED BY CONSTRUCTION TO BE RESTORED WITH MINIMUM 4" TOPSOIL, KENTUCKY BLUE GRASS SEED, FERTILIZER, AND MULCH (TYP). USE SALVAGED TOPSOIL OR IMPORT TOPSOIL IF REQUIRED.     | [Symbol] | L203 | L203 |
| [Symbol] | AREAS DISTURBED BY CONSTRUCTION TO BE RESTORED WITH MINIMUM 4" TOPSOIL, BIRD AND BUTTERFLY NATIVE SEED MIX, AND MULCH (TYP). USE SALVAGED TOPSOIL OR IMPORT TOPSOIL IF REQUIRED.       | [Symbol] | 1    | L201 |
| [Symbol] | MIX 1: 3" PLUG PLANTINGS IN BIORETENTION AREA. REFER TO CIVIL AND LANDSCAPE DETAILS. PLUGS TO BE PLANTED 12-INCHES O.C.  | [Symbol] | 14   | 15   |
| [Symbol] | AREAS DISTURBED BY CONSTRUCTION TO BE RESTORED WITH MINIMUM 4" TOPSOIL, STORMWATER BIOFILTRATION NATIVE SEED MIX, AND MULCH (TYP). USE SALVAGED TOPSOIL OR IMPORT TOPSOIL IF REQUIRED. | [Symbol] | L203 | L203 |
| [Symbol] | KAFKA GRANITE STABILIZED PATHWAY MIX MANUFACTURER: KAFKA GRANITE. COLOR: TO BE DETERMINED BY OWNER (OR APPROVED EQUAL)   | [Symbol] | 9    | L202 |
| [Symbol] | PLANT "CODE" REFERENCES TO THE PLANT SCHEDULE. QUANTITY OF PLANTS IN THE PLANT GROUPING LEADER LINE  |          |      |      |
| [Symbol] | PLANT SYMBOL (SYMBOL VARIES)   |          |      |      |

**KEY INDEX**

|   |  |    |      |
|---|--|----|------|
| 1 | ALUMINUM EDGING AT PLANTING BED                                      | 12 | L202 |
| 2 | SHREDDED HARDWOOD MULCH IN PLANTING BED                              | 7  | L201 |
| 3 | OUTCROPPING STONE RETAINING WALL                                     | 11 | L202 |
| 4 | LIGHT POLES (SHOWN FOR REFERENCE ONLY - SEE SITE LIGHTING PLAN)      | 10 | L202 |
| 5 | STEEL EDGING AT KAFKA GRANITE STABILIZED GRANITE PATHWAY MIX & MULCH | 8  | L202 |
| 6 | KAFKA GRANITE STABILIZED GRANITE PATHWAY MIX AT SIDEWALK             | 13 | L202 |
| 7 | STEEL EDGING AT KAFKA GRANITE STABILIZED GRANITE PATHWAY MIX & LAWN  |    |      |

**eu.a**

milwaukee 333 East Chicago Street  
 Milwaukee, Wisconsin 53202  
 414.271.5330

madison 309 West Johnson Street, Suite 202  
 Madison, Wisconsin 53703  
 608.442.2350

denver 1899 Wynkoop Street, Suite 700  
 Denver, Colorado 80202  
 303.566.4500

PROJECT INFORMATION  
**BAYSIDE MIDDLE SCHOOL**

601 E ELLSWORTH LN, BAYSIDE, WI 53217

ISSUANCE AND REVISIONS

| DATE       | DESCRIPTION             |
|------------|-------------------------|
| 09/16/2022 | 50% DESIGN DEVELOPMENT  |
| 11/18/2022 | 75% DESIGN DEVELOPMENT  |
| 11/28/2022 | ARC SUBMISSION          |
| 12/09/2022 | 100% DESIGN DEVELOPMENT |
| 01/16/2023 | ARC SUBMISSION          |

KEY PLAN

**kapur**

7711 N. Port Washington Road  
 Milwaukee, Wisconsin 53217  
 kapurinc.com

SHEET INFORMATION

**PROGRESS DOCUMENTS NOT FOR CONSTRUCTION**

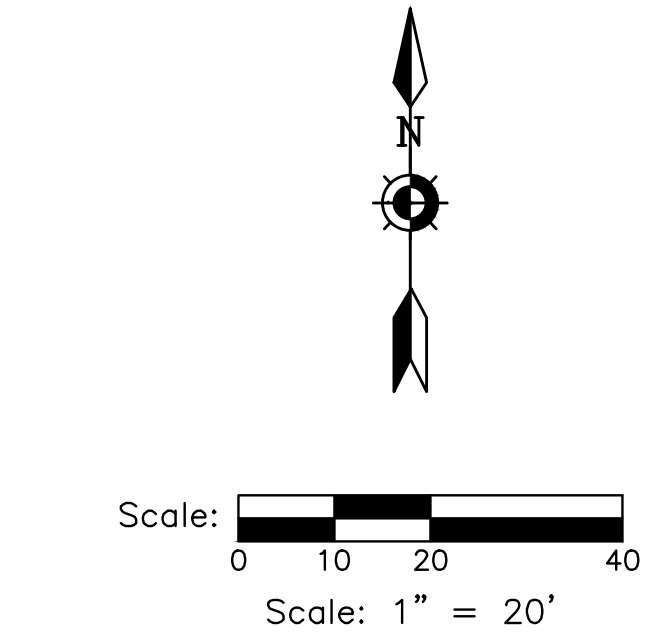
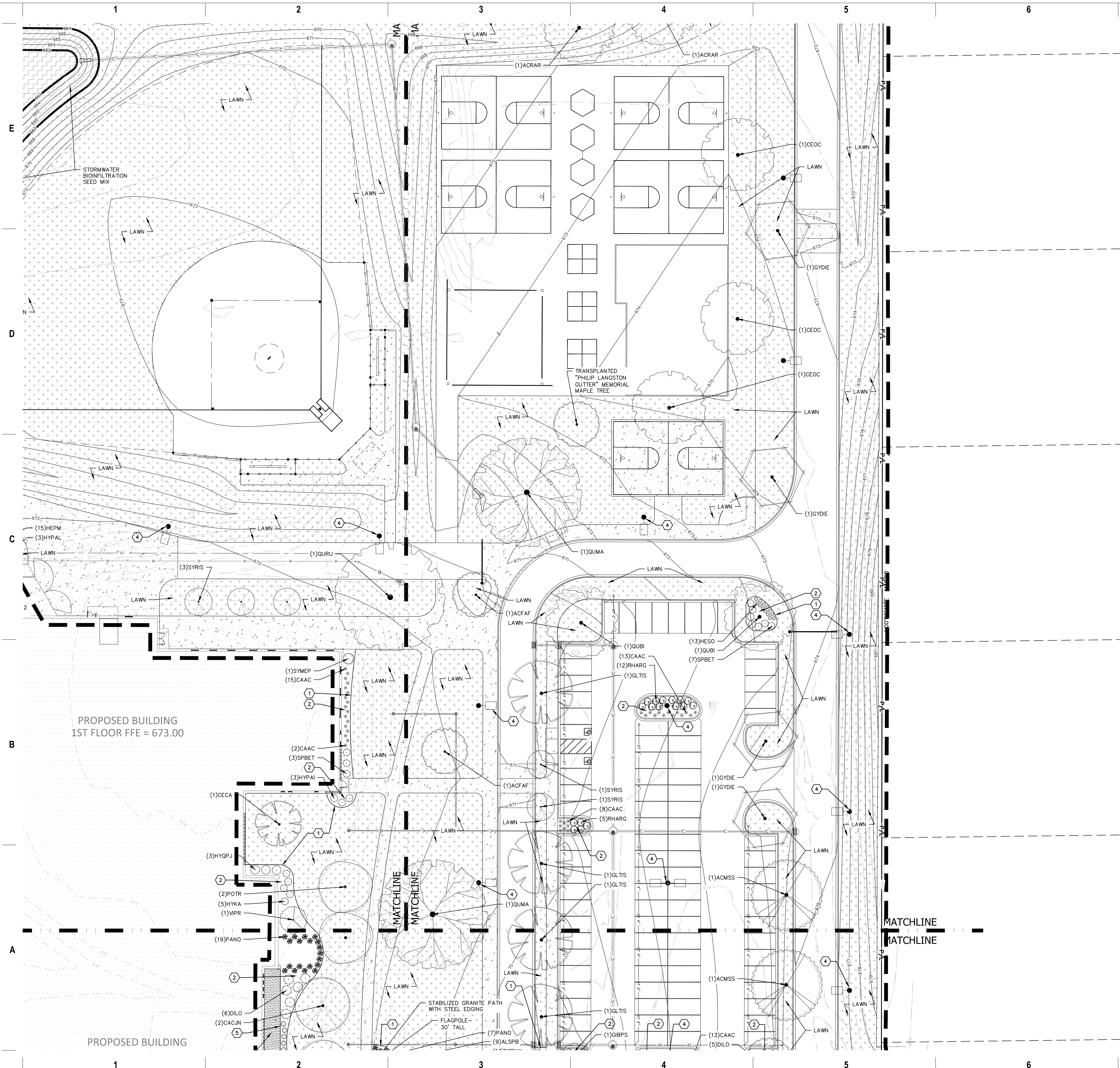
These documents reflect progress and intent and may be subject to change, including additional detail. These are not final construction documents and shall not be used for final bidding or construction-related purposes.

PROJECT MANAGER TS  
 PROJECT NUMBER 19314-02  
 SITE LANDSCAPE PLAN - PHASE 2 - AREA B

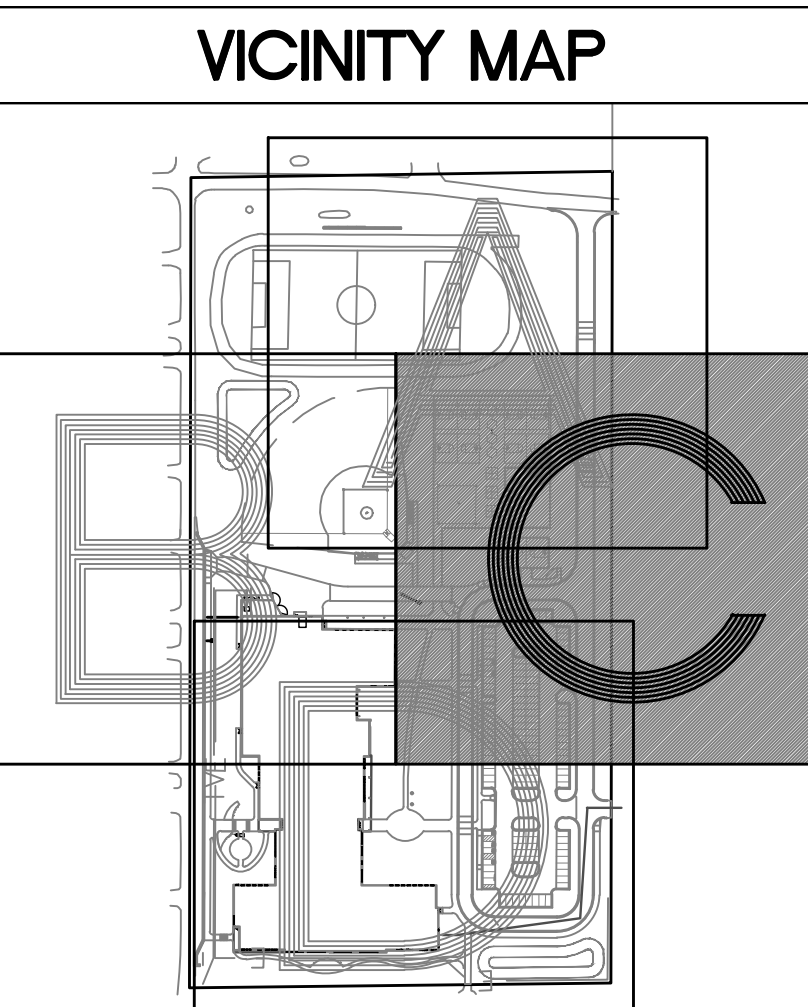
**L101-2B**

© 2022 Eppstein Uhen Architects, Inc.





**DIGGERSHOTLINE**  
 Dial 811 or (800)242-8511  
 www.DiggersHotline.com



**HATCH LEGEND**

|                          |  |                          |    |
|--------------------------|--|--------------------------|----|
| [Symbol: Dotted pattern] | PROJECT LIMITS   | [Symbol: Circle with 12] | 12 |
| [Symbol: Dotted pattern] | AREAS DISTURBED BY CONSTRUCTION TO BE RESTORED WITH MINIMUM 4" TOPSOIL, KENTUCKY BLUE GRASS SEED, FERTILIZER, AND MULCH (TYP). USE SALVAGED TOPSOIL OR IMPORT TOPSOIL IF REQUIRED.     | [Symbol: Circle with 15] | 15 |
| [Symbol: Dotted pattern] | AREAS DISTURBED BY CONSTRUCTION TO BE RESTORED WITH MINIMUM 4" TOPSOIL, BIRD AND BUTTERFLY NATIVE SEED MIX, AND MULCH (TYP). USE SALVAGED TOPSOIL OR IMPORT TOPSOIL IF REQUIRED.       | [Symbol: Circle with 13] | 13 |
| [Symbol: Dotted pattern] | MIX 1: 3" PLUG PLANTINGS IN BIORETENTION AREA. REFER TO CIVIL AND LANDSCAPE DETAILS. PLUGS TO BE PLANTED 12-INCHES O.C.  | [Symbol: Circle with 1]  | 1  |
| [Symbol: Dotted pattern] | AREAS DISTURBED BY CONSTRUCTION TO BE RESTORED WITH MINIMUM 4" TOPSOIL, STORMWATER BIOFILTRATION NATIVE SEED MIX, AND MULCH (TYP). USE SALVAGED TOPSOIL OR IMPORT TOPSOIL IF REQUIRED. | [Symbol: Circle with 14] | 14 |
| [Symbol: Dotted pattern] | KAFKA GRANITE STABILIZED PATHWAY MIX MANUFACTURER: KAFKA GRANITE. COLOR: TO BE DETERMINED BY OWNER (OR APPROVED EQUAL)   | [Symbol: Circle with 9]  | 9  |
| [Symbol: Circle with 10] | [Symbol: Circle with 10]   | [Symbol: Circle with 10] | 10 |

**KEY INDEX**

|             |  |              |    |
|-------------|--|--------------|----|
| [Symbol: 1] | ALUMINUM EDGING AT PLANTING BED                                      | [Symbol: 12] | 12 |
| [Symbol: 2] | SHREDDED HARDWOOD MULCH IN PLANTING BED                              | [Symbol: 7]  | 7  |
| [Symbol: 3] | OUTCROPPING STONE RETAINING WALL                                     | [Symbol: 11] | 11 |
| [Symbol: 4] | LIGHT POLES (SHOWN FOR REFERENCE ONLY - SEE SITE LIGHTING PLAN)      | [Symbol: 13] | 13 |
| [Symbol: 5] | STEEL EDGING AT KAFKA GRANITE STABILIZED GRANITE PATHWAY MIX & MULCH | [Symbol: 10] | 10 |
| [Symbol: 6] | KAFKA GRANITE STABILIZED GRANITE PATHWAY MIX AT SIDEWALK             | [Symbol: 8]  | 8  |
| [Symbol: 7] | STEEL EDGING AT KAFKA GRANITE STABILIZED GRANITE PATHWAY MIX & LAWN  | [Symbol: 13] | 13 |

**eu.a**

milwaukee 333 East Chicago Street  
 Milwaukee, Wisconsin 53202  
 414.271.5350

madison 309 West Johnson Street, Suite 202  
 Madison, Wisconsin 53703  
 608.442.2550

denver 1859 Wynkoop Street, Suite 700  
 Denver, Colorado 80202  
 303.595.4500

PROJECT INFORMATION  
**BAYSIDE MIDDLE SCHOOL**

601 E ELLSWORTH LN, BAYSIDE, WI 53217

ISSUANCE AND REVISIONS

| DATE       | DESCRIPTION             |
|------------|-------------------------|
| 09/16/2022 | 50% DESIGN DEVELOPMENT  |
| 11/18/2022 | 75% DESIGN DEVELOPMENT  |
| 11/28/2022 | ARC SUBMISSION          |
| 12/09/2022 | 100% DESIGN DEVELOPMENT |
| 01/16/2023 | ARC SUBMISSION          |

KEY PLAN

**kapur**

7711 N. Port Washington Road  
 Milwaukee, Wisconsin 53217  
 kapurinc.com

SHEET INFORMATION

**PROGRESS DOCUMENTS NOT FOR CONSTRUCTION**

These documents reflect progress and intent and may be subject to change, including additional details. These are not final construction documents and shall not be used for final bidding or construction-related purposes.

PROJECT MANAGER TS  
 PROJECT NUMBER 19314-02  
 SITE LANDSCAPE PLAN - PHASE 2 - AREA C

**L101-2C**

© 2022 Eppstein Uhen Architects, Inc.



