

VILLAGE OF
BAYSIDE

2024 COLLECTION GUIDE

PUBLISHED NOVEMBER 28, 2023



9075 N Regent Road
Bayside, WI 53217
(414) 206-3915
www.baysidewi.gov



LETTER TO THE COMMUNITY



November 20, 2023

Residents of Bayside,

Collections are one of the most valued services that the Village provides. In fact, in the most recent Community Survey, 86.7% of residents ranked garbage collection as the most important service and 66.7% of residents ranked recycling collection as the second most important service.

In 2022, our DPW crews spent,

- 732 hours collecting garbage,
- 475 hours collecting recycling,
- 994 hours collecting yard waste, and
- 244 hours collecting leaves.

During this time, our crew collected:

- 1,273 tons of garbage,
- 446 tons of recycling,
- 7,838 piles of yard waste, and
- 2,667 piles of leaves.

In 2024, in addition to our normal collections, the Village will host a Spring Clean Up Day, as well as Recycling Days from March through December.

Crews will perform collections on 202 out of 253 working days with 54 of those days consisting of two (2) or more types of collections in 2024.

Roughly 80% of the days that crews spend working consist of collections, while still completing other responsibilities.

The Village understands the importance of collections for maintaining the appearance of the community. It is equally important to perform them efficiently and effectively. We have created this resource guide to inform, educate, and help you on the variations of each collection. We hope you find this as a useful tool to continue the efficiency of Village collections.

Respectfully,
Andrew K. Pederson
Village Manager

Table of Contents

Master Calendar.....4

Garbage.....5-6

Recycling.....7-8

Yard Waste.....9-10

Loose Leaf.....11-12

Special/Bulk Item Pick-Up.....13

Specialized Recycling.....14

Special Events.....15

2024 Collection Schedule

| January | | | | | | |
|---------|----|----|----|----|----|----|
| Su | Mo | Tu | We | Th | Fr | Sa |
| | 1 | 2 | 3 | 4 | 5 | 6 |
| 7 | 8 | 9 | 10 | 11 | 12 | 13 |
| 14 | 15 | 16 | 17 | 18 | 19 | 20 |
| 21 | 22 | 23 | 24 | 25 | 26 | 27 |
| 28 | 29 | 30 | 31 | | | |

| February | | | | | | |
|----------|----|----|----|----|----|----|
| Su | Mo | Tu | We | Th | Fr | Sa |
| | | | | 1 | 2 | 3 |
| 4 | 5 | 6 | 7 | 8 | 9 | 10 |
| 11 | 12 | 13 | 14 | 15 | 16 | 17 |
| 18 | 19 | 20 | 21 | 22 | 23 | 24 |
| 25 | 26 | 27 | 28 | 29 | | |

| March | | | | | | |
|-------|----|----|----|----|----|----|
| Su | Mo | Tu | We | Th | Fr | Sa |
| | | | | | 1 | 2 |
| 3 | 4 | 5 | 6 | 7 | 8 | 9 |
| 10 | 11 | 12 | 13 | 14 | 15 | 16 |
| 17 | 18 | 19 | 20 | 21 | 22 | 23 |
| 24 | 25 | 26 | 27 | 28 | 29 | 30 |
| 31 | | | | | | |

| April | | | | | | |
|-------|----|----|----|----|----|----|
| Su | Mo | Tu | We | Th | Fr | Sa |
| | 1 | 2 | 3 | 4 | 5 | 6 |
| 7 | 8 | 9 | 10 | 11 | 12 | 13 |
| 14 | 15 | 16 | 17 | 18 | 19 | 20 |
| 21 | 22 | 23 | 24 | 25 | 26 | 27 |
| 28 | 29 | 30 | | | | |

| May | | | | | | |
|-----|----|----|----|----|----|----|
| Su | Mo | Tu | We | Th | Fr | Sa |
| | | | 1 | 2 | 3 | 4 |
| 5 | 6 | 7 | 8 | 9 | 10 | 11 |
| 12 | 13 | 14 | 15 | 16 | 17 | 18 |
| 19 | 20 | 21 | 22 | 23 | 24 | 25 |
| 26 | 27 | 28 | 29 | 30 | 31 | |

| June | | | | | | |
|------|----|----|----|----|----|----|
| Su | Mo | Tu | We | Th | Fr | Sa |
| | | | | | | 1 |
| 2 | 3 | 4 | 5 | 6 | 7 | 8 |
| 9 | 10 | 11 | 12 | 13 | 14 | 15 |
| 16 | 17 | 18 | 19 | 20 | 21 | 22 |
| 23 | 24 | 25 | 26 | 27 | 28 | 29 |
| 30 | | | | | | |

| July | | | | | | |
|------|----|----|----|----|----|----|
| Su | Mo | Tu | We | Th | Fr | Sa |
| | 1 | 2 | 3 | 4 | 5 | 6 |
| 7 | 8 | 9 | 10 | 11 | 12 | 13 |
| 14 | 15 | 16 | 17 | 18 | 19 | 20 |
| 21 | 22 | 23 | 24 | 25 | 26 | 27 |
| 28 | 29 | 30 | 31 | | | |

| August | | | | | | |
|--------|----|----|----|----|----|----|
| Su | Mo | Tu | We | Th | Fr | Sa |
| | | | | 1 | 2 | 3 |
| 4 | 5 | 6 | 7 | 8 | 9 | 10 |
| 11 | 12 | 13 | 14 | 15 | 16 | 17 |
| 18 | 19 | 20 | 21 | 22 | 23 | 24 |
| 25 | 26 | 27 | 28 | 29 | 30 | 31 |

| September | | | | | | |
|-----------|----|----|----|----|----|----|
| Su | Mo | Tu | We | Th | Fr | Sa |
| 1 | 2 | 3 | 4 | 5 | 6 | 7 |
| 8 | 9 | 10 | 11 | 12 | 13 | 14 |
| 15 | 16 | 17 | 18 | 19 | 20 | 21 |
| 22 | 23 | 24 | 25 | 26 | 27 | 28 |
| 29 | 30 | | | | | |

| October | | | | | | |
|---------|----|----|----|----|----|----|
| Su | Mo | Tu | We | Th | Fr | Sa |
| | | 1 | 2 | 3 | 4 | 5 |
| 6 | 7 | 8 | 9 | 10 | 11 | 12 |
| 13 | 14 | 15 | 16 | 17 | 18 | 19 |
| 20 | 21 | 22 | 23 | 24 | 25 | 26 |
| 27 | 28 | 29 | 30 | 31 | | |

| November | | | | | | |
|----------|----|----|----|----|----|----|
| Su | Mo | Tu | We | Th | Fr | Sa |
| | | | | | 1 | 2 |
| 3 | 4 | 5 | 6 | 7 | 8 | 9 |
| 10 | 11 | 12 | 13 | 14 | 15 | 16 |
| 17 | 18 | 19 | 20 | 21 | 22 | 23 |
| 24 | 25 | 26 | 27 | 28 | 29 | 30 |

| December | | | | | | |
|----------|----|----|----|----|----|----|
| Su | Mo | Tu | We | Th | Fr | Sa |
| 1 | 2 | 3 | 4 | 5 | 6 | 7 |
| 8 | 9 | 10 | 11 | 12 | 13 | 14 |
| 15 | 16 | 17 | 18 | 19 | 20 | 21 |
| 22 | 23 | 24 | 25 | 26 | 27 | 28 |
| 29 | 30 | 31 | | | | |

| |
|----------------------------------------------------------------------------------------|
| Monday Garbage Route: Fairy Chasm and North (Includes Bayside Woods & Bayside Commons) |
| Tuesday Garbage Route: South of Fairy Chasm |
| Recycling: Fairy Chasm and North (Includes Bayside Woods and Bayside Commons) |
| Recycling: South of Fairy Chasm |
| Loose-Leaf Collection |

| |
|------------------------|
| Yard Waste |
| Bagged Yard Waste |
| Recycling Day |
| Clean-Up Day |
| Village Offices Closed |

2024 Garbage Schedule

| January | | | | | | |
|---------|----|----|----|----|----|----|
| Su | Mo | Tu | We | Th | Fr | Sa |
| | 1 | 2 | 3 | 4 | 5 | 6 |
| 7 | 8 | 9 | 10 | 11 | 12 | 13 |
| 14 | 15 | 16 | 17 | 18 | 19 | 20 |
| 21 | 22 | 23 | 24 | 25 | 26 | 27 |
| 28 | 29 | 30 | 31 | | | |

| February | | | | | | |
|----------|----|----|----|----|----|----|
| Su | Mo | Tu | We | Th | Fr | Sa |
| | | | | 1 | 2 | 3 |
| 4 | 5 | 6 | 7 | 8 | 9 | 10 |
| 11 | 12 | 13 | 14 | 15 | 16 | 17 |
| 18 | 19 | 20 | 21 | 22 | 23 | 24 |
| 25 | 26 | 27 | 28 | 29 | | |

| March | | | | | | |
|-------|----|----|----|----|----|----|
| Su | Mo | Tu | We | Th | Fr | Sa |
| | | | | | 1 | 2 |
| 3 | 4 | 5 | 6 | 7 | 8 | 9 |
| 10 | 11 | 12 | 13 | 14 | 15 | 16 |
| 17 | 18 | 19 | 20 | 21 | 22 | 23 |
| 24 | 25 | 26 | 27 | 28 | 29 | 30 |
| 31 | | | | | | |

| April | | | | | | |
|-------|----|----|----|----|----|----|
| Su | Mo | Tu | We | Th | Fr | Sa |
| | 1 | 2 | 3 | 4 | 5 | 6 |
| 7 | 8 | 9 | 10 | 11 | 12 | 13 |
| 14 | 15 | 16 | 17 | 18 | 19 | 20 |
| 21 | 22 | 23 | 24 | 25 | 26 | 27 |
| 28 | 29 | 30 | | | | |

| May | | | | | | |
|-----|----|----|----|----|----|----|
| Su | Mo | Tu | We | Th | Fr | Sa |
| | | | 1 | 2 | 3 | 4 |
| 5 | 6 | 7 | 8 | 9 | 10 | 11 |
| 12 | 13 | 14 | 15 | 16 | 17 | 18 |
| 19 | 20 | 21 | 22 | 23 | 24 | 25 |
| 26 | 27 | 28 | 29 | 30 | 31 | |

| June | | | | | | |
|------|----|----|----|----|----|----|
| Su | Mo | Tu | We | Th | Fr | Sa |
| | | | | | | 1 |
| 2 | 3 | 4 | 5 | 6 | 7 | 8 |
| 9 | 10 | 11 | 12 | 13 | 14 | 15 |
| 16 | 17 | 18 | 19 | 20 | 21 | 22 |
| 23 | 24 | 25 | 26 | 27 | 28 | 29 |
| 30 | | | | | | |

| July | | | | | | |
|------|----|----|----|----|----|----|
| Su | Mo | Tu | We | Th | Fr | Sa |
| | 1 | 2 | 3 | 4 | 5 | 6 |
| 7 | 8 | 9 | 10 | 11 | 12 | 13 |
| 14 | 15 | 16 | 17 | 18 | 19 | 20 |
| 21 | 22 | 23 | 24 | 25 | 26 | 27 |
| 28 | 29 | 30 | 31 | | | |

| August | | | | | | |
|--------|----|----|----|----|----|----|
| Su | Mo | Tu | We | Th | Fr | Sa |
| | | | | 1 | 2 | 3 |
| 4 | 5 | 6 | 7 | 8 | 9 | 10 |
| 11 | 12 | 13 | 14 | 15 | 16 | 17 |
| 18 | 19 | 20 | 21 | 22 | 23 | 24 |
| 25 | 26 | 27 | 28 | 29 | 30 | 31 |

| September | | | | | | |
|-----------|----|----|----|----|----|----|
| Su | Mo | Tu | We | Th | Fr | Sa |
| 1 | 2 | 3 | 4 | 5 | 6 | 7 |
| 8 | 9 | 10 | 11 | 12 | 13 | 14 |
| 15 | 16 | 17 | 18 | 19 | 20 | 21 |
| 22 | 23 | 24 | 25 | 26 | 27 | 28 |
| 29 | 30 | | | | | |

| October | | | | | | |
|---------|----|----|----|----|----|----|
| Su | Mo | Tu | We | Th | Fr | Sa |
| | | 1 | 2 | 3 | 4 | 5 |
| 6 | 7 | 8 | 9 | 10 | 11 | 12 |
| 13 | 14 | 15 | 16 | 17 | 18 | 19 |
| 20 | 21 | 22 | 23 | 24 | 25 | 26 |
| 27 | 28 | 29 | 30 | 31 | | |

| November | | | | | | |
|----------|----|----|----|----|----|----|
| Su | Mo | Tu | We | Th | Fr | Sa |
| | | | | | 1 | 2 |
| 3 | 4 | 5 | 6 | 7 | 8 | 9 |
| 10 | 11 | 12 | 13 | 14 | 15 | 16 |
| 17 | 18 | 19 | 20 | 21 | 22 | 23 |
| 24 | 25 | 26 | 27 | 28 | 29 | 30 |

| December | | | | | | |
|----------|----|----|----|----|----|----|
| Su | Mo | Tu | We | Th | Fr | Sa |
| 1 | 2 | 3 | 4 | 5 | 6 | 7 |
| 8 | 9 | 10 | 11 | 12 | 13 | 14 |
| 15 | 16 | 17 | 18 | 19 | 20 | 21 |
| 22 | 23 | 24 | 25 | 26 | 27 | 28 |
| 29 | 30 | 31 | | | | |

Monday Garbage Route: Fairy Chasm and North (Includes Bayside Woods & Bayside Commons)

Clean-Up Day

Tuesday Garbage Route: South of Fairy Chasm

Village Offices Closed

GARBAGE

When

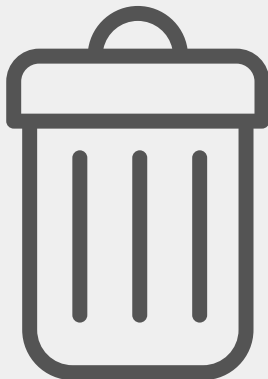
- Garbage is collected weekly.
 - North Route: Fairy Chasm and North (Includes Bayside Woods and Bayside Commons)
 - South Route: South of Fairy Chasm
- Carts must be out at the edge of the road by 7 a.m. on collection day.
- Carts cannot be placed at the edge of the road earlier than 5 p.m. the day before scheduled pickup.
- Carts shall be returned to the point of storage within 12 hours after pickup.
- Carts should not be stored in a location where such storage is unsightly to the surrounding view.

Resources

Garbage Collection Do's and Don'ts

Access Bayside

- Rent a cart
- Purchase a cart
- Schedule a Special Pick-Up



Instructions

- Use only Village provided brown cart(s).
- Carts out for pick up should be three (3) feet away from other carts and structures (mailboxes, etc.)
- Carts out for pick up should have handle facing the home.
- All garbage should be bagged.
- Any materials on top of or next to your cart will not be collected.
- Recyclables and yard waste are not permitted in garbage carts.
- Carts can be rented or purchased for extra garbage materials.
 - The rental fee for the first cart per week is \$40 and \$25 for each additional cart.
 - The purchase fee is \$80 plus an annual collection fee of \$103.50.
- Crews will pass by each home once. There is a \$45 fee for same day callbacks.
- If you miss your scheduled garbage day, you can request a special pick-up for a fee of \$80. See page 15 for details.
- Up-the-drive garbage/recycling pick-up can be purchased for an annual fee of \$1,202.94.
- Up-the-drive garbage/recycling collection service can be requested for a one-time pick-up fee of \$50.
- Extra garbage can be brought to Spring Clean Up Day.

2024 Recycling Schedule

| January | | | | | | |
|---------|----|----|----|----|----|----|
| Su | Mo | Tu | We | Th | Fr | Sa |
| | 1 | 2 | 3 | 4 | 5 | 6 |
| 7 | 8 | 9 | 10 | 11 | 12 | 13 |
| 14 | 15 | 16 | 17 | 18 | 19 | 20 |
| 21 | 22 | 23 | 24 | 25 | 26 | 27 |
| 28 | 29 | 30 | 31 | | | |

| February | | | | | | |
|----------|----|----|----|----|----|----|
| Su | Mo | Tu | We | Th | Fr | Sa |
| | | | | 1 | 2 | 3 |
| 4 | 5 | 6 | 7 | 8 | 9 | 10 |
| 11 | 12 | 13 | 14 | 15 | 16 | 17 |
| 18 | 19 | 20 | 21 | 22 | 23 | 24 |
| 25 | 26 | 27 | 28 | 29 | | |

| March | | | | | | |
|-------|----|----|----|----|----|----|
| Su | Mo | Tu | We | Th | Fr | Sa |
| | | | | | 1 | 2 |
| 3 | 4 | 5 | 6 | 7 | 8 | 9 |
| 10 | 11 | 12 | 13 | 14 | 15 | 16 |
| 17 | 18 | 19 | 20 | 21 | 22 | 23 |
| 24 | 25 | 26 | 27 | 28 | 29 | 30 |
| 31 | | | | | | |

| April | | | | | | |
|-------|----|----|----|----|----|----|
| Su | Mo | Tu | We | Th | Fr | Sa |
| | 1 | 2 | 3 | 4 | 5 | 6 |
| 7 | 8 | 9 | 10 | 11 | 12 | 13 |
| 14 | 15 | 16 | 17 | 18 | 19 | 20 |
| 21 | 22 | 23 | 24 | 25 | 26 | 27 |
| 28 | 29 | 30 | | | | |

| May | | | | | | |
|-----|----|----|----|----|----|----|
| Su | Mo | Tu | We | Th | Fr | Sa |
| | | | 1 | 2 | 3 | 4 |
| 5 | 6 | 7 | 8 | 9 | 10 | 11 |
| 12 | 13 | 14 | 15 | 16 | 17 | 18 |
| 19 | 20 | 21 | 22 | 23 | 24 | 25 |
| 26 | 27 | 28 | 29 | 30 | 31 | |

| June | | | | | | |
|------|----|----|----|----|----|----|
| Su | Mo | Tu | We | Th | Fr | Sa |
| | | | | | | 1 |
| 2 | 3 | 4 | 5 | 6 | 7 | 8 |
| 9 | 10 | 11 | 12 | 13 | 14 | 15 |
| 16 | 17 | 18 | 19 | 20 | 21 | 22 |
| 23 | 24 | 25 | 26 | 27 | 28 | 29 |
| 30 | | | | | | |

| July | | | | | | |
|------|----|----|----|----|----|----|
| Su | Mo | Tu | We | Th | Fr | Sa |
| | 1 | 2 | 3 | 4 | 5 | 6 |
| 7 | 8 | 9 | 10 | 11 | 12 | 13 |
| 14 | 15 | 16 | 17 | 18 | 19 | 20 |
| 21 | 22 | 23 | 24 | 25 | 26 | 27 |
| 28 | 29 | 30 | 31 | | | |

| August | | | | | | |
|--------|----|----|----|----|----|----|
| Su | Mo | Tu | We | Th | Fr | Sa |
| | | | | 1 | 2 | 3 |
| 4 | 5 | 6 | 7 | 8 | 9 | 10 |
| 11 | 12 | 13 | 14 | 15 | 16 | 17 |
| 18 | 19 | 20 | 21 | 22 | 23 | 24 |
| 25 | 26 | 27 | 28 | 29 | 30 | 31 |

| September | | | | | | |
|-----------|----|----|----|----|----|----|
| Su | Mo | Tu | We | Th | Fr | Sa |
| 1 | 2 | 3 | 4 | 5 | 6 | 7 |
| 8 | 9 | 10 | 11 | 12 | 13 | 14 |
| 15 | 16 | 17 | 18 | 19 | 20 | 21 |
| 22 | 23 | 24 | 25 | 26 | 27 | 28 |
| 29 | 30 | | | | | |

| October | | | | | | |
|---------|----|----|----|----|----|----|
| Su | Mo | Tu | We | Th | Fr | Sa |
| | | 1 | 2 | 3 | 4 | 5 |
| 6 | 7 | 8 | 9 | 10 | 11 | 12 |
| 13 | 14 | 15 | 16 | 17 | 18 | 19 |
| 20 | 21 | 22 | 23 | 24 | 25 | 26 |
| 27 | 28 | 29 | 30 | 31 | | |

| November | | | | | | |
|----------|----|----|----|----|----|----|
| Su | Mo | Tu | We | Th | Fr | Sa |
| | | | | | 1 | 2 |
| 3 | 4 | 5 | 6 | 7 | 8 | 9 |
| 10 | 11 | 12 | 13 | 14 | 15 | 16 |
| 17 | 18 | 19 | 20 | 21 | 22 | 23 |
| 24 | 25 | 26 | 27 | 28 | 29 | 30 |

| December | | | | | | |
|----------|----|----|----|----|----|----|
| Su | Mo | Tu | We | Th | Fr | Sa |
| 1 | 2 | 3 | 4 | 5 | 6 | 7 |
| 8 | 9 | 10 | 11 | 12 | 13 | 14 |
| 15 | 16 | 17 | 18 | 19 | 20 | 21 |
| 22 | 23 | 24 | 25 | 26 | 27 | 28 |
| 29 | 30 | 31 | | | | |

Recycling: Fairy Chasm and North (Includes Bayside Woods and Bayside Commons)

Recycling Day

Recycling: South of Fairy Chasm

Clean-Up Day

Village Offices Closed

RECYCLING

When

- Recycling is collected bi-weekly.
 - North Route: Fairy Chasm and North (Includes Bayside Woods and Bayside Commons)
 - South Route: South of Fairy Chasm
- Recycling carts must be out at the edge of the road by 7 a.m. on collection day.
- Carts cannot be placed at the edge of the road earlier than 5 p.m. the day before scheduled pickup.
- Carts shall be returned to the point of storage within 12 hours after pickup.
- Carts should not be stored in a location where such storage is unsightly to the surrounding view.

Resources

[Recycling Collection Do's and Don'ts](#)

[What to Recycle](#)

[Most Common Contaminants](#)

[Back to Basics](#)

[Recycling Myths](#)

[Access Bayside \(Rent, Purchase, or Schedule\)](#)



Instructions

- Use only Village provided green cart(s).
- Carts out for pick up should be three (3) feet away from other carts and structures (mailboxes, etc.)
- Recycling carts out for pick up should have handle facing the home.
- Do not place recyclables in plastic bags.
- Any materials on top of or next to your cart will not be collected.
- Carts can be rented or purchased for extra recycling materials.
 - The rental fee for the first cart per week is \$40 and \$25 for each additional cart.
 - The purchase fee is \$80. There is no annual fee.
- Crews will pass by each home once. There is a \$45 fee for same day callbacks.
- If you miss your scheduled recycling day, you can request a special pick-up for a fee of \$80. See page 15 for details.
- Up-the-drive garbage/recycling pick-up can be purchased for an annual fee of \$1,202.94.
- Up-the-drive garbage/recycling collection service can be requested for a one-time pick-up fee of \$50.
- Extra recycling can be brought to Spring and Fall Clean Up Days.
- Boxes should be broken down and containers should be rinsed and cleaned out.

2024 Yard Waste Schedule

| January | | | | | | |
|---------|----|----|----|----|----|----|
| Su | Mo | Tu | We | Th | Fr | Sa |
| | 1 | 2 | 3 | 4 | 5 | 6 |
| 7 | 8 | 9 | 10 | 11 | 12 | 13 |
| 14 | 15 | 16 | 17 | 18 | 19 | 20 |
| 21 | 22 | 23 | 24 | 25 | 26 | 27 |
| 28 | 29 | 30 | 31 | | | |

| February | | | | | | |
|----------|----|----|----|----|----|----|
| Su | Mo | Tu | We | Th | Fr | Sa |
| | | | | 1 | 2 | 3 |
| 4 | 5 | 6 | 7 | 8 | 9 | 10 |
| 11 | 12 | 13 | 14 | 15 | 16 | 17 |
| 18 | 19 | 20 | 21 | 22 | 23 | 24 |
| 25 | 26 | 27 | 28 | 29 | | |

| March | | | | | | |
|-------|----|----|----|----|----|----|
| Su | Mo | Tu | We | Th | Fr | Sa |
| | | | | | 1 | 2 |
| 3 | 4 | 5 | 6 | 7 | 8 | 9 |
| 10 | 11 | 12 | 13 | 14 | 15 | 16 |
| 17 | 18 | 19 | 20 | 21 | 22 | 23 |
| 24 | 25 | 26 | 27 | 28 | 29 | 30 |
| 31 | | | | | | |

| April | | | | | | |
|-------|----|----|----|----|----|----|
| Su | Mo | Tu | We | Th | Fr | Sa |
| | 1 | 2 | 3 | 4 | 5 | 6 |
| 7 | 8 | 9 | 10 | 11 | 12 | 13 |
| 14 | 15 | 16 | 17 | 18 | 19 | 20 |
| 21 | 22 | 23 | 24 | 25 | 26 | 27 |
| 28 | 29 | 30 | | | | |

| May | | | | | | |
|-----|----|----|----|----|----|----|
| Su | Mo | Tu | We | Th | Fr | Sa |
| | | | 1 | 2 | 3 | 4 |
| 5 | 6 | 7 | 8 | 9 | 10 | 11 |
| 12 | 13 | 14 | 15 | 16 | 17 | 18 |
| 19 | 20 | 21 | 22 | 23 | 24 | 25 |
| 26 | 27 | 28 | 29 | 30 | 31 | |

| June | | | | | | |
|------|----|----|----|----|----|----|
| Su | Mo | Tu | We | Th | Fr | Sa |
| | | | | | | 1 |
| 2 | 3 | 4 | 5 | 6 | 7 | 8 |
| 9 | 10 | 11 | 12 | 13 | 14 | 15 |
| 16 | 17 | 18 | 19 | 20 | 21 | 22 |
| 23 | 24 | 25 | 26 | 27 | 28 | 29 |
| 30 | | | | | | |

| July | | | | | | |
|------|----|----|----|----|----|----|
| Su | Mo | Tu | We | Th | Fr | Sa |
| | 1 | 2 | 3 | 4 | 5 | 6 |
| 7 | 8 | 9 | 10 | 11 | 12 | 13 |
| 14 | 15 | 16 | 17 | 18 | 19 | 20 |
| 21 | 22 | 23 | 24 | 25 | 26 | 27 |
| 28 | 29 | 30 | 31 | | | |

| August | | | | | | |
|--------|----|----|----|----|----|----|
| Su | Mo | Tu | We | Th | Fr | Sa |
| | | | | 1 | 2 | 3 |
| 4 | 5 | 6 | 7 | 8 | 9 | 10 |
| 11 | 12 | 13 | 14 | 15 | 16 | 17 |
| 18 | 19 | 20 | 21 | 22 | 23 | 24 |
| 25 | 26 | 27 | 28 | 29 | 30 | 31 |

| September | | | | | | |
|-----------|----|----|----|----|----|----|
| Su | Mo | Tu | We | Th | Fr | Sa |
| 1 | 2 | 3 | 4 | 5 | 6 | 7 |
| 8 | 9 | 10 | 11 | 12 | 13 | 14 |
| 15 | 16 | 17 | 18 | 19 | 20 | 21 |
| 22 | 23 | 24 | 25 | 26 | 27 | 28 |
| 29 | 30 | | | | | |

| October | | | | | | |
|---------|----|----|----|----|----|----|
| Su | Mo | Tu | We | Th | Fr | Sa |
| | | 1 | 2 | 3 | 4 | 5 |
| 6 | 7 | 8 | 9 | 10 | 11 | 12 |
| 13 | 14 | 15 | 16 | 17 | 18 | 19 |
| 20 | 21 | 22 | 23 | 24 | 25 | 26 |
| 27 | 28 | 29 | 30 | 31 | | |

| November | | | | | | |
|----------|----|----|----|----|----|----|
| Su | Mo | Tu | We | Th | Fr | Sa |
| | | | | | 1 | 2 |
| 3 | 4 | 5 | 6 | 7 | 8 | 9 |
| 10 | 11 | 12 | 13 | 14 | 15 | 16 |
| 17 | 18 | 19 | 20 | 21 | 22 | 23 |
| 24 | 25 | 26 | 27 | 28 | 29 | 30 |

| December | | | | | | |
|----------|----|----|----|----|----|----|
| Su | Mo | Tu | We | Th | Fr | Sa |
| 1 | 2 | 3 | 4 | 5 | 6 | 7 |
| 8 | 9 | 10 | 11 | 12 | 13 | 14 |
| 15 | 16 | 17 | 18 | 19 | 20 | 21 |
| 22 | 23 | 24 | 25 | 26 | 27 | 28 |
| 29 | 30 | 31 | | | | |

Yard Waste

Recycling Day

Bagged Yard Waste

Clean-Up Day

Village Offices Closed

YARD WASTE

When

- Loose yard waste will be collected twelve (12) weeks in 2024, highlighted in **red**.
- Bagged yard waste will be collected five (5) times in 2024, highlighted in **pink**.
- Yard waste carts are collected during loose and bagged yard waste collections.
- Yard waste must be out by 7 a.m. the first day of collection week.
- Check the yard waste calendar for specific weeks.
- No yard waste should be stored in a location where such storage is unsightly to the surrounding view. Place yard waste roadside no earlier than three (3) days prior to pick up.

Unacceptable Items

- Grass clippings
- Thatch
- Sod
- Bricks/rocks
- Concrete
- Soil/dirt
- Contractor generated debris
- Items in plastic bags

Resources

[Yard Waste Collection Do's and Don'ts](#)

[Access Bayside \(Schedule a Special Pick-Up\)](#)

[Access Bayside \(Rent or Purchase Yard Waste Cart\)](#)

- Purchase a Yard Waste Cart and receive a free Bayside reusable bag

Instructions

- Place your piles, bags, and/or grey yard waste carts by the road, three (3) feet away from mailboxes and other structures.
- Branches must be less than 5' long.
- Arrange sticks parallel to the road at the road shoulder, out of the roadway.
- Do not put yard waste in plastic bags, garbage carts, or recycling carts.
- Do not put pet waste in yard waste piles, bags, or containers.
- Do not place yard waste on a property other than your own.
- Combine all materials into one (1) pile per property.
- Piles greater than or equal to 10' long x 5' wide x 5' high require a special pick-up. Special pick-ups can be requested through [Access Bayside](#).
- Contractor generated yard waste is not collected by the Village. Please make sure your contractor takes yard waste with them when done.
- Crews will pass by each home once. There is a \$45 fee for same day callbacks.
- If you miss collection day, you can request a special pick-up for a fee of \$80. See page 15 for details.
- Yard waste can be dropped off on Recycling and Clean Up Days.

2024 Loose Leaf Schedule

| October | | | | | | |
|---------|----|----|----|----|----|----|
| Su | Mo | Tu | We | Th | Fr | Sa |
| | | 1 | 2 | 3 | 4 | 5 |
| 6 | 7 | 8 | 9 | 10 | 11 | 12 |
| 13 | 14 | 15 | 16 | 17 | 18 | 19 |
| 20 | 21 | 22 | 23 | 24 | 25 | 26 |
| 27 | 28 | 29 | 30 | 31 | | |

| November | | | | | | |
|----------|----|----|----|----|----|----|
| Su | Mo | Tu | We | Th | Fr | Sa |
| | | | | | 1 | 2 |
| 3 | 4 | 5 | 6 | 7 | 8 | 9 |
| 10 | 11 | 12 | 13 | 14 | 15 | 16 |
| 17 | 18 | 19 | 20 | 21 | 22 | 23 |
| 24 | 25 | 26 | 27 | 28 | 29 | 30 |

| December | | | | | | |
|----------|----|----|----|----|----|----|
| Su | Mo | Tu | We | Th | Fr | Sa |
| 1 | 2 | 3 | 4 | 5 | 6 | 7 |
| 8 | 9 | 10 | 11 | 12 | 13 | 14 |
| 15 | 16 | 17 | 18 | 19 | 20 | 21 |
| 22 | 23 | 24 | 25 | 26 | 27 | 28 |
| 29 | 30 | 31 | | | | |

Loose-Leaf Collection

Village Offices Closed



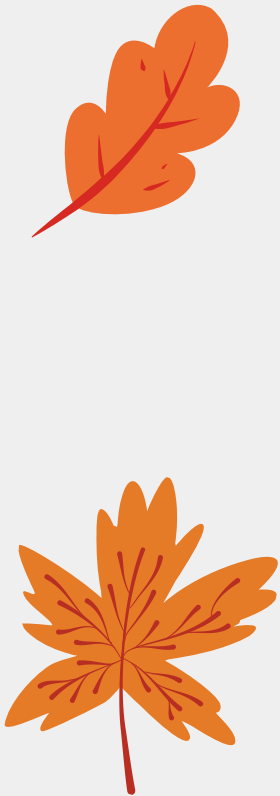
LOOSE LEAF COLLECTION

When

- Loose leaves will be collected four (4) weeks in the fall.
- Leaves must be out at the edge of the road by 7 a.m. the first day of collection week.
- Check the Loose Leaf calendar for specific weeks, highlighted in **purple**.

Resources

[Leaf Collection Do's and Don'ts](#)



Instructions

- Place all leaves in one (1) pile per property.
- Tree leaves only. Do not put other yard waste in leaf piles i.e., hostas/grasses/etc.
- Leaf piles should be at least three (3) feet away from mailboxes, garbage carts, and other objects.
- Loose leaves should **not** be bagged or carted for the fall collection. They should be bagged or carted all other times of the year.
- Leaf piles should be located roadside, not in the road, drainage ditch, or near catch basin grates.



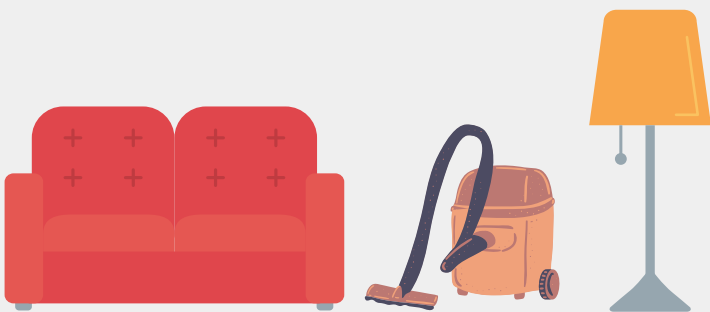
SPECIAL OR BULK ITEM PICK-UP

When

- Special Pick-Ups are available:
 - first and third Thursday of each month.
- Items must be out by 7 a.m. the day of the collection.

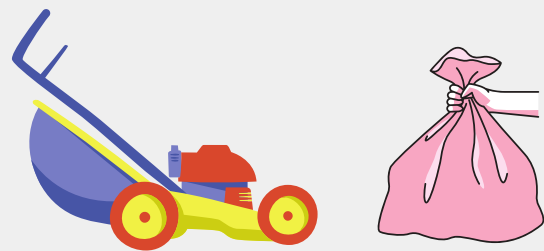
Unacceptable Items

- Refrigerators/Freezers
- Dehumidifiers
- Air conditioners
- Any item containing Freon
- Tires
- Gasoline
- Propane Gas Containers
- Lead Pipe
- Lead Based Paint
- Liquid Latex Paint
- Cooking Oils
- Asbestos
- Fertilizers
- Household Hazardous Waste
- Contractor generated waste, etc.



Instructions

- Submit a service request for a "Special Pick-Up" through [Access Bayside](#) at least 24 hours in advance of your desired special pick-up date.
- Call Village Hall to schedule a Special Pick-Up at 414-206-3915.
- There is an \$80 minimum fee which covers two (2) crew members for 20 minutes. Additional charges will occur if the pick-up takes longer than 20 minutes.
- Special Pick-Ups must be paid for prior to the pick-up.
- All items should be placed by the road in one location.
- Crews will not collect contractor generated waste.
- Yard waste piles larger than 10' long x 5' wide x 5' high require a Special Pick-Up.



HOW DO I DISPOSE OF THIS?

Item:

1. Refrigerators, Freezers, Washers, Dryers, Dishwashers, Air Conditioners, Dehumidifiers, Stoves, etc.
2. Prescription Drugs and Medications
3. Fire Extinguishers
4. Needles and Sharps
5. Computers, Printers, Fax Machines, Televisions, Keyboards, DVD Players, etc.
6. Household Hazardous Waste such as Fertilizer, Rat Poison, Paint, Lighter Fluid, Aerosols, Furniture Polish, Stains, Household Cleaners, Pesticides, etc.
7. Contractor generated waste
8. Paper Recycling
9. Propane Tanks
10. Plastic Bags

Where to dispose:

1. Refrigerant Depot, LLC
5311 S. 9th St.
Milwaukee, WI 53221
(414) 627-1152
2. Village of Bayside Police Department Lobby
9075 N. Regent Rd.
(414) 206-3916
3. Milwaukee Recharge
5707 W. Vliet, Milwaukee, WI 53208
(414) 774-0772

Accurate Recharge & Fire Suppression, LLC
5811 N. 96th St, Milwaukee, WI 53225
(414) 464-1870
4. Visit www.safeneedledisposal.org for specific locations.
5. Various E-Cycle Wisconsin locations. Visit www.dnr.wi.gov/topic/ECycle/ for a list of locations.
6. Contact Milwaukee Metropolitan Sewerage District for locations and more accepted items. (414) 225-2065
7. Contact your contractor if they have left waste behind. They are responsible for hauling away waste.
8. Bayside Village Hall Lobby
9075 N. Regent Rd.
(414) 206-3916
9. AmeriGas
6034 S. Howell Ave.
Milwaukee, WI 53207
10. Village Hall Recycling Center in Lobby or Compacter in Village Hall circle drive.

SPECIAL EVENTS

Clean Up Day

Clean Up Day is held annually in the spring from 9 a.m. to 12:00 p.m. To participate in the event, a monetary or food donation to the Hunger Task Force is required.

Clean Up Day in 2024 is:

- Saturday, April 13

Items collected include:

- Bicycles for Dream Bikes
- Cell phones
- Electronics (No refrigerators or other items containing freon; TV/monitor fees must be paid in advance)
- Garbage
- Recycling
- Eyeglasses
- Ink cartridges
- Light bulbs
- Paint
- Scrap metal
- Yard waste
- Plastic bags
- Textiles (clothes, shoes, etc.)
- Items for Goodwill
- Items for Habitat for Humanity

Volunteers are always welcome and can call Village Hall at 414-206-3915.



Recycling Day

Recycling Days are held on the third Saturday of the month from March through November, excluding April, from 9:00 a.m. to 11:30 a.m.

Recycling Days in 2024 are:

- Saturday, March 16
- Saturday, May 18
- Saturday, June 15
- Saturday, July 20
- Saturday, August 17
- Saturday, September 21
- Saturday, October 19
- Saturday, November 16
- Thursday, December 26 (2-5 p.m.)

Items collected include:

- Yard waste
- Recycling
- Electronics (No refrigerators or other items containing freon; TV and monitor fees must be paid in advance)
- Dehumidifiers
- Scrap metal
- Plastic bags
- Light bulbs
- Ink cartridges
- Eyeglasses
- Cell phones
- Textiles (clothes, shoes, etc.)

