



Bedford Historic Downtown Connectivity Plan

A NOACA Transportation for Livable Communities Initiative (TLCI) Plan

Public Meeting 1

September 13th, 2023



Agenda

- Introductions & Plan Background
 - Mike Mallis – Bedford City Manager
 - Ryan Smalley – Envision
- Study Area & TLCI Plan Goals
- Plan Schedule
- Community Survey
- Existing Condition Analysis
- Group Questions
- Open House/Activity Boards



TLCI Plan Goals

- Improve accessibility and mobility for all modes of travel in the study area
- Improve non-motorized connectivity between origins and destinations
- Create a safer environment for cyclists and pedestrians
- Create accessible and inviting transit connections
- Encourage equitable economic development and investment

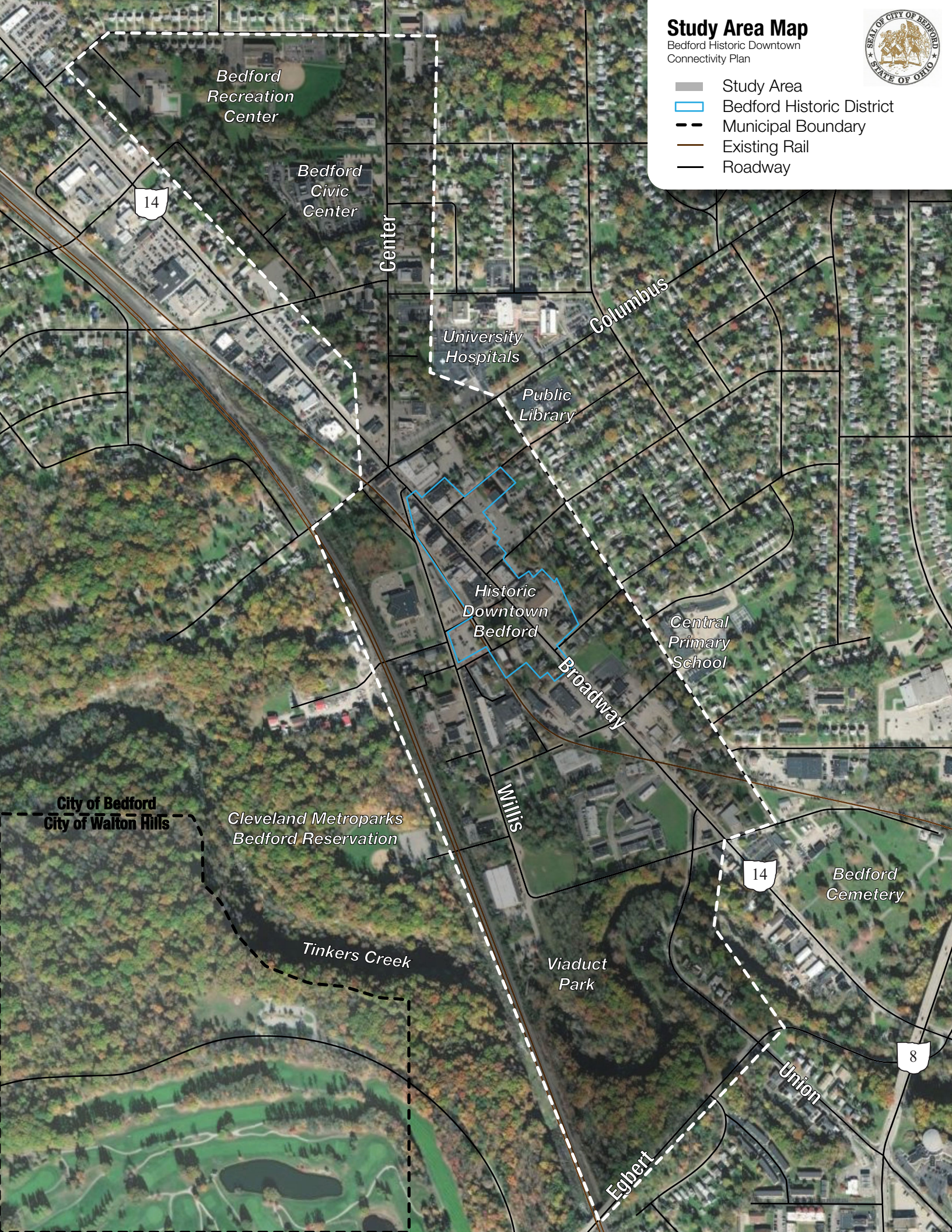




Study Area Map

Bedford Historic Downtown
Connectivity Plan

- Study Area
- Bedford Historic District
- Municipal Boundary
- Existing Rail
- Roadway



Typical Transportation Project Development

We are here

TLCI Planning



- DEFINE GOALS
- ESTABLISH PARTNERS
- GATHER PUBLIC FEEDBACK
- IDENTIFY IMPROVEMENTS
- DEFINE COSTS/PHASING
- FUNDING STRATEGIES

TLCI Implementation Grant

Design



- CREATE DETAILED CONSTRUCTION PLANS
- ESTABLISH RIGHT OF WAY NEEDS
- DETAILED COSTS
- UTILITY IMPACTS

Construction



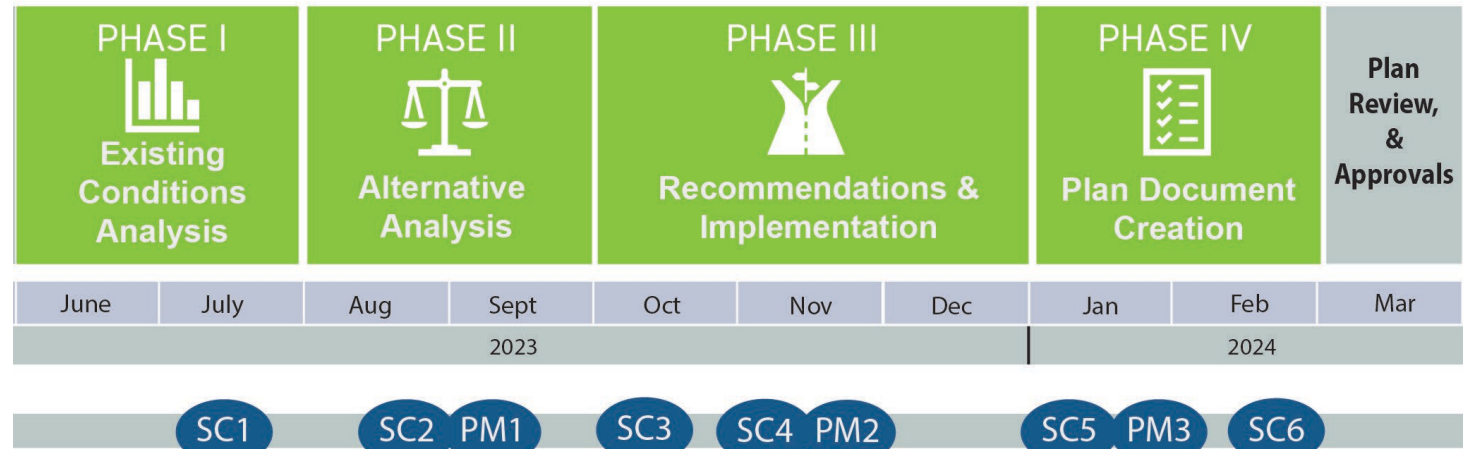
- ACQUIRE RIGHT OF WAY
- RELOCATE UTILITIES AS NEEDED
- BUILD IMPROVEMENT

Once TLCI Connectivity Plan is complete and funding acquired then these phases occur

TLCI Plan Schedule

- 9-month planning process
- Plan complete – February 2024
- 6 steering committee meetings
- 3 public meetings

Downtown Connectivity Planning Process



Public Engagement Process



Community Survey

- Survey is live
 - Link on City website and social media accounts
 - Promoted at State of City
 - In print at City Hall
- Will be open through end of September
- Print copies in back
- Asks questions regarding travel modes and challenges traveling to/from downtown




Bedford Historic District Downtown Connectivity Plan



The City of Bedford, in partnership with the Northeast Ohio Areawide Coordinating Agency (NOACA), is embarking on a public engagement process to gather community input for the City of Bedford's Historic Downtown Connectivity Plan. The City is looking to improve all modes of travel specifically bicycle, pedestrian, and transit connectivity to and from Downtown Bedford to surrounding neighborhoods and assets. Please help shape future improvements within Downtown Bedford by participating in the following....

1) Take the Community Survey

- Scan the QR Code with your smart phone camera 
- Or go to www.bedfordoh.gov/ and click the "Community Survey" link
- Or go to the City of Bedford Twitter and/or Facebook pages
- Or go to the City Hall (165 Center Street, Bedford, OH 44146) and pick up a paper copy



2) Participate in Public Meeting #1

The meeting will review the planning process, discuss plan goals/objectives, and identify locations to improve safety and/or connectivity when traveling Downtown.

When - Wednesday, September 13th, 2023 at 6 PM

Where - Ellenwood Recreation Center

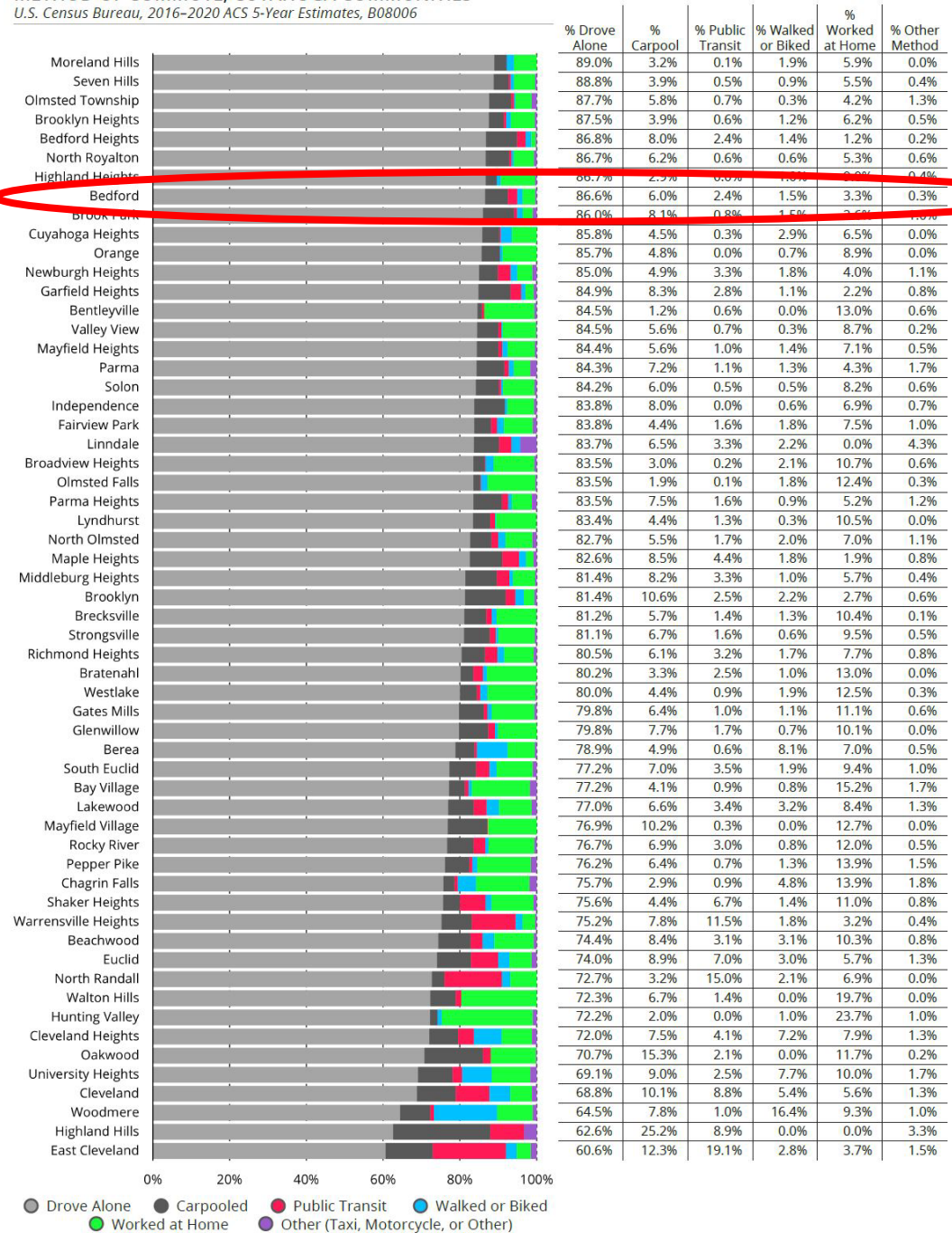
(124 Ellenwood Ave, Bedford, OH 44146)

Existing Conditions Analysis



Method of Commute

METHOD OF COMMUTE, CUYAHOGA COMMUNITIES
U.S. Census Bureau, 2016-2020 ACS 5-Year Estimates, B08006



Pedestrian Network

- Most corridors within study area have sidewalks and ADA accessible curb ramps
- Active railroad limits access of residents east and south of Downtown Bedford
- Neighborhoods east and south of Downtown have limited sidewalks
 - Willis and Monroe – one side
 - Taylor – no sidewalks

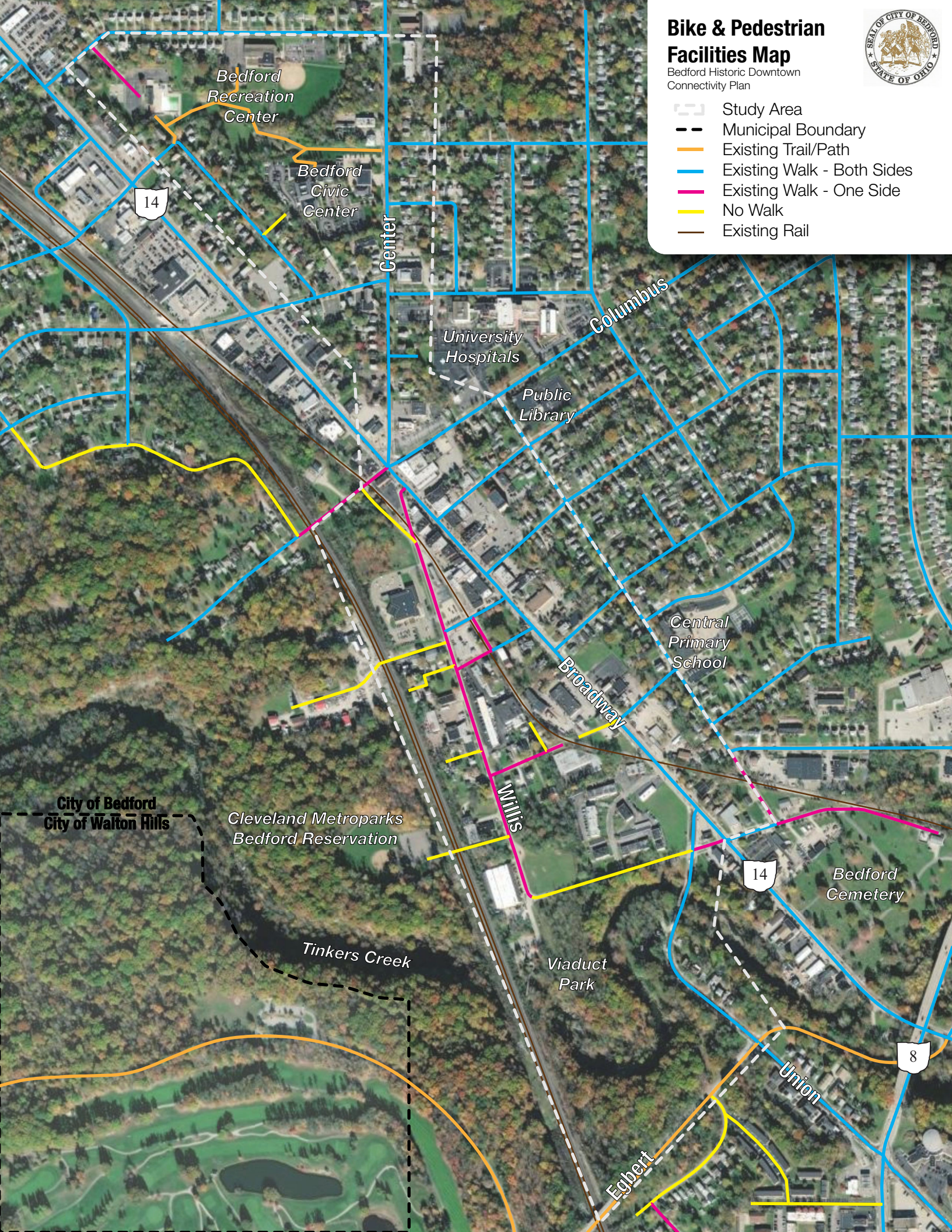


Bike & Pedestrian Facilities Map

Bedford Historic Downtown
Connectivity Plan



- Study Area
- Municipal Boundary
- Existing Trail/Path
- Existing Walk - Both Sides
- Existing Walk - One Side
- No Walk
- Existing Rail



City of Bedford
City of Walton Hills

Cleveland Metroparks
Bedford Reservation

Tinkers Creek

Bedford
Recreation
Center

Bedford
Civic
Center

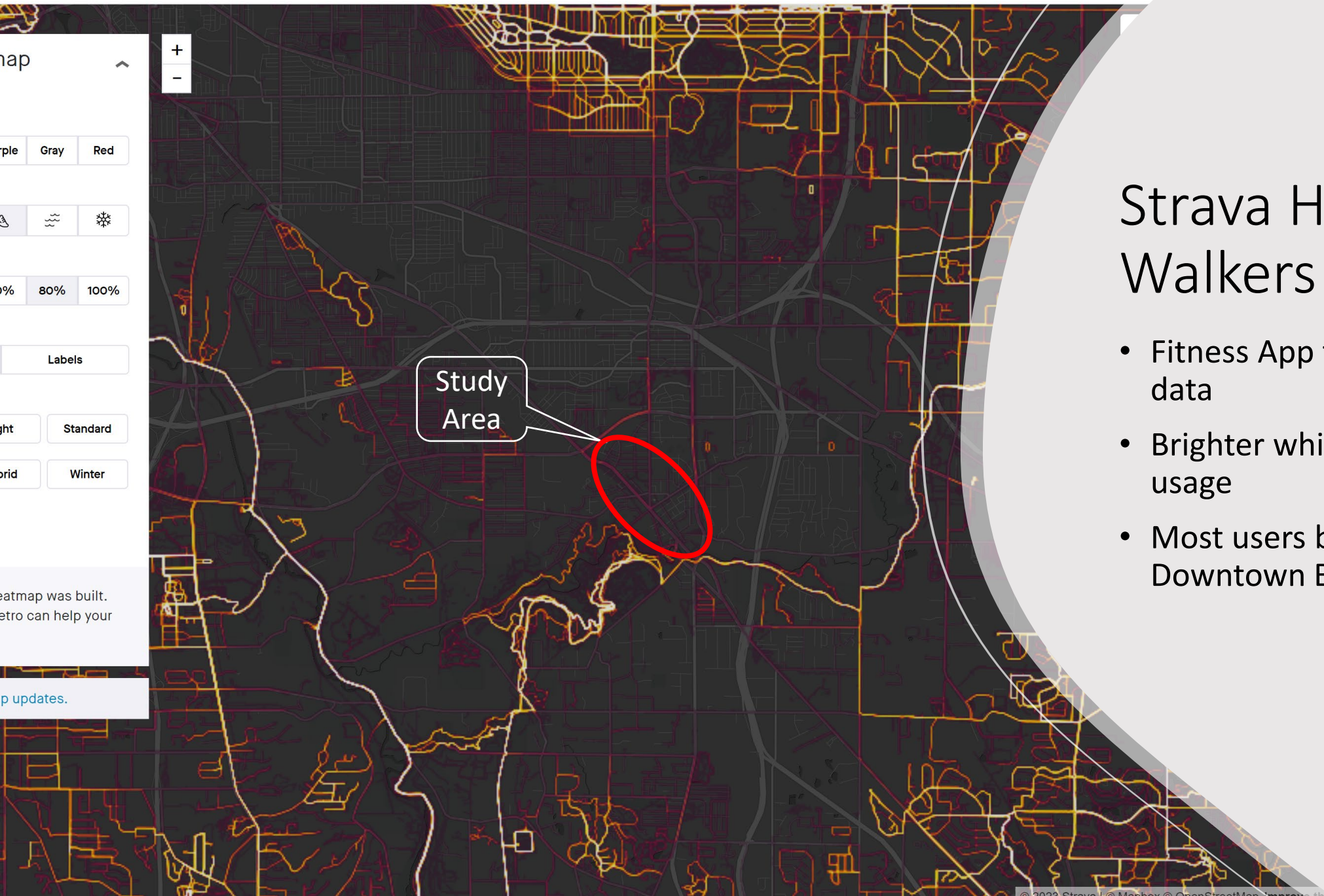
University
Hospitals

Public
Library

Central
Primary
School

Bedford
Cemetery

Viaduct
Park

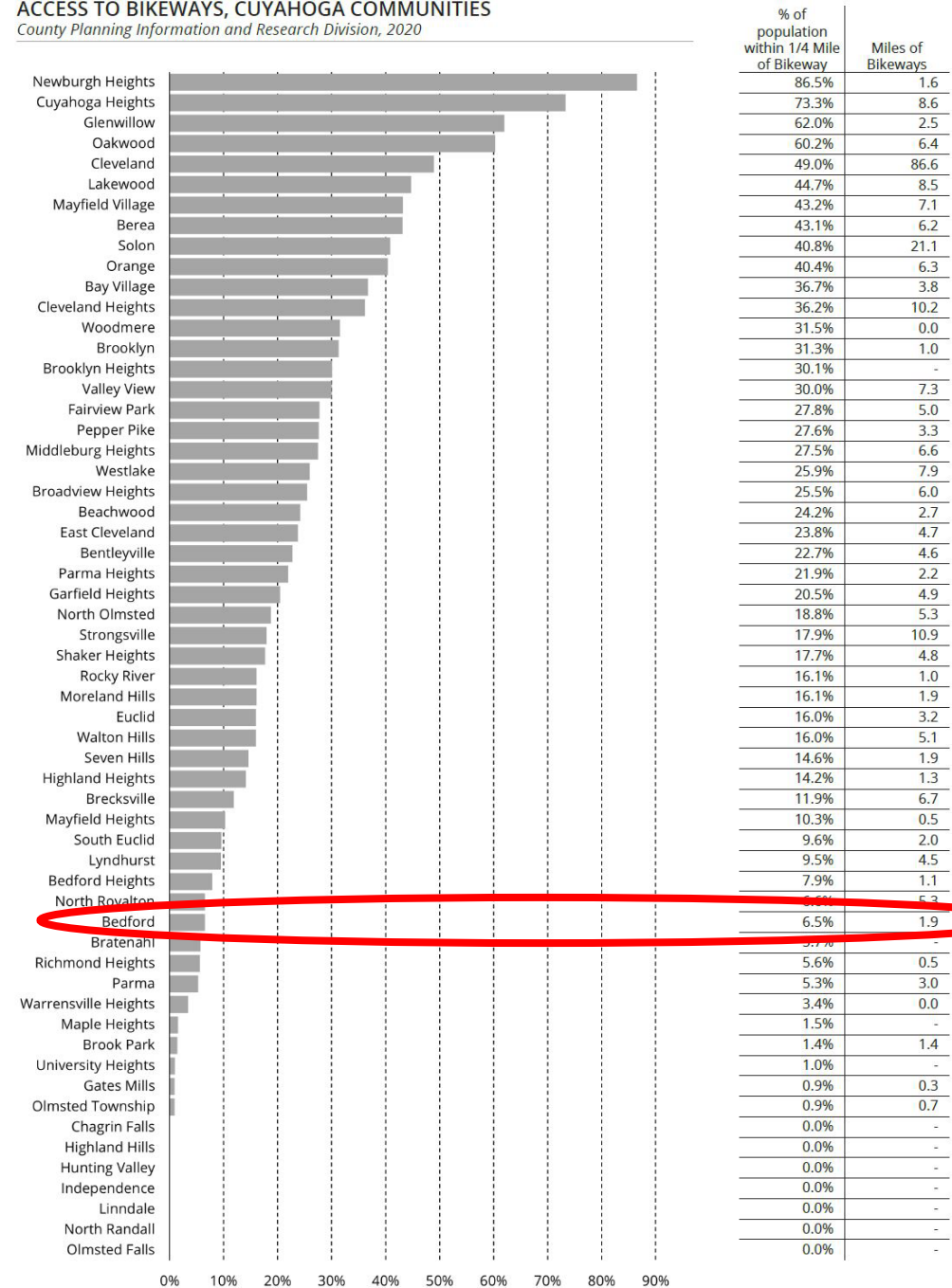


Strava Heat Map - Walkers

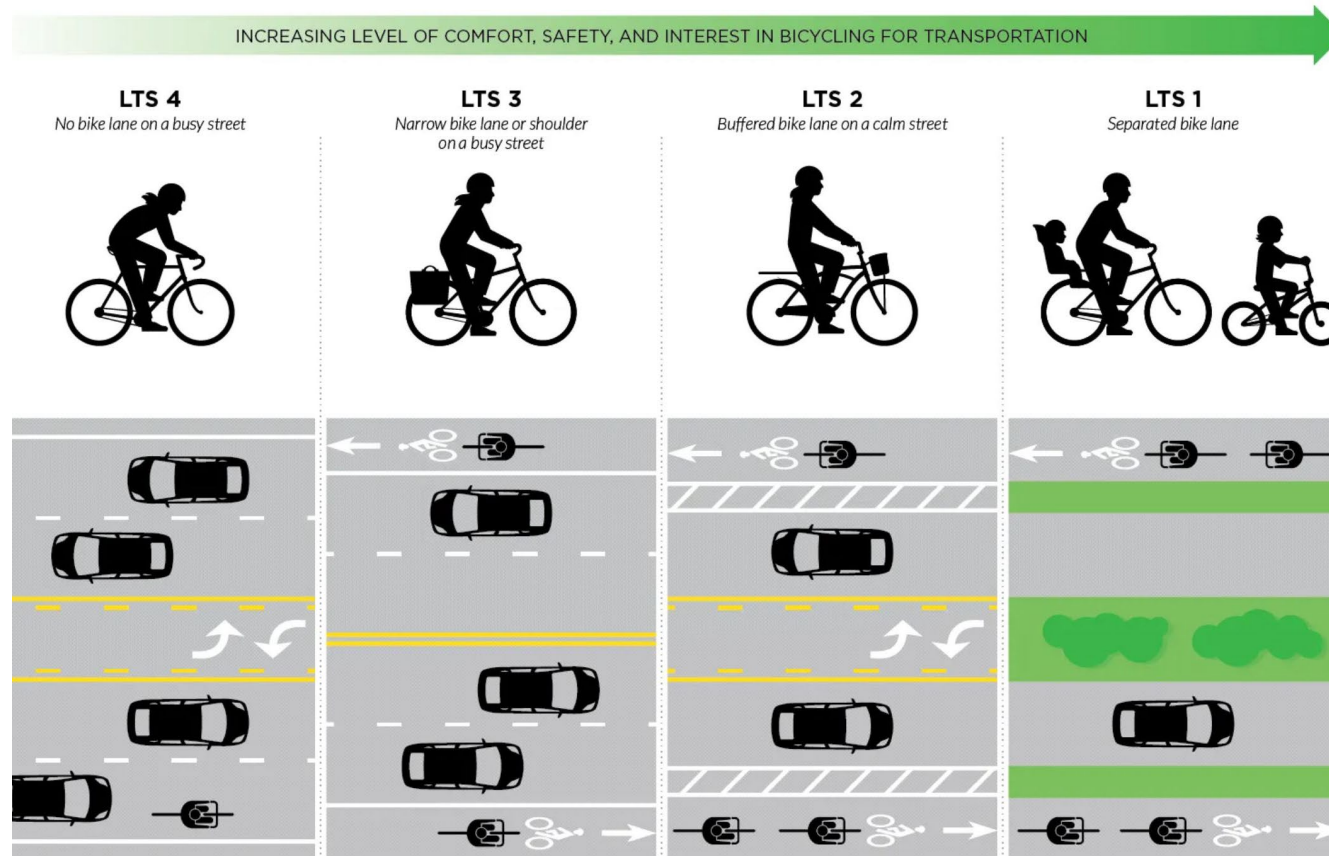
- Fitness App that tracks user data
- Brighter whites indicate high usage
- Most users bypassing Downtown Bedford

Bicycle Access

ACCESS TO BIKEWAYS, CUYAHOGA COMMUNITIES
County Planning Information and Research Division, 2020

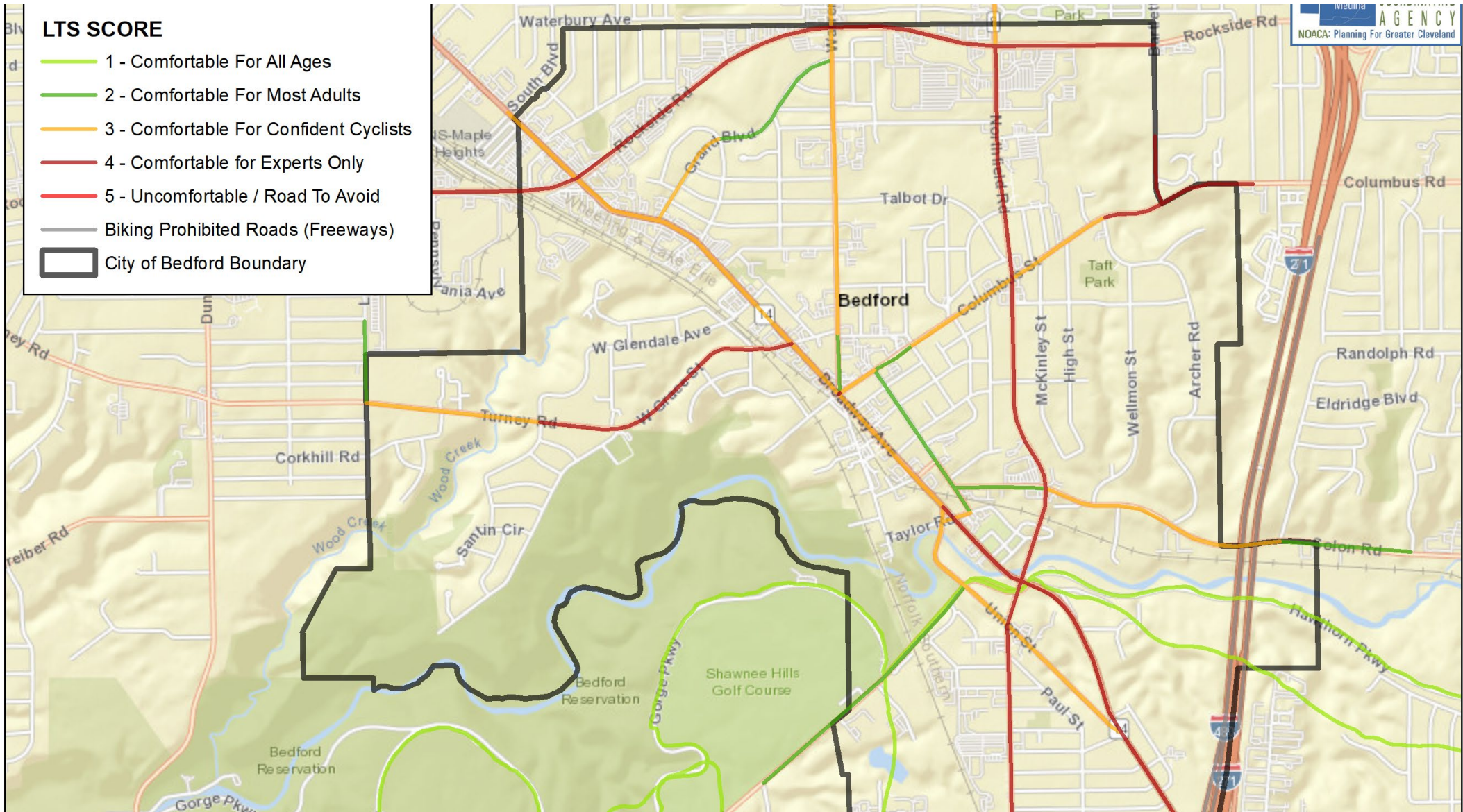


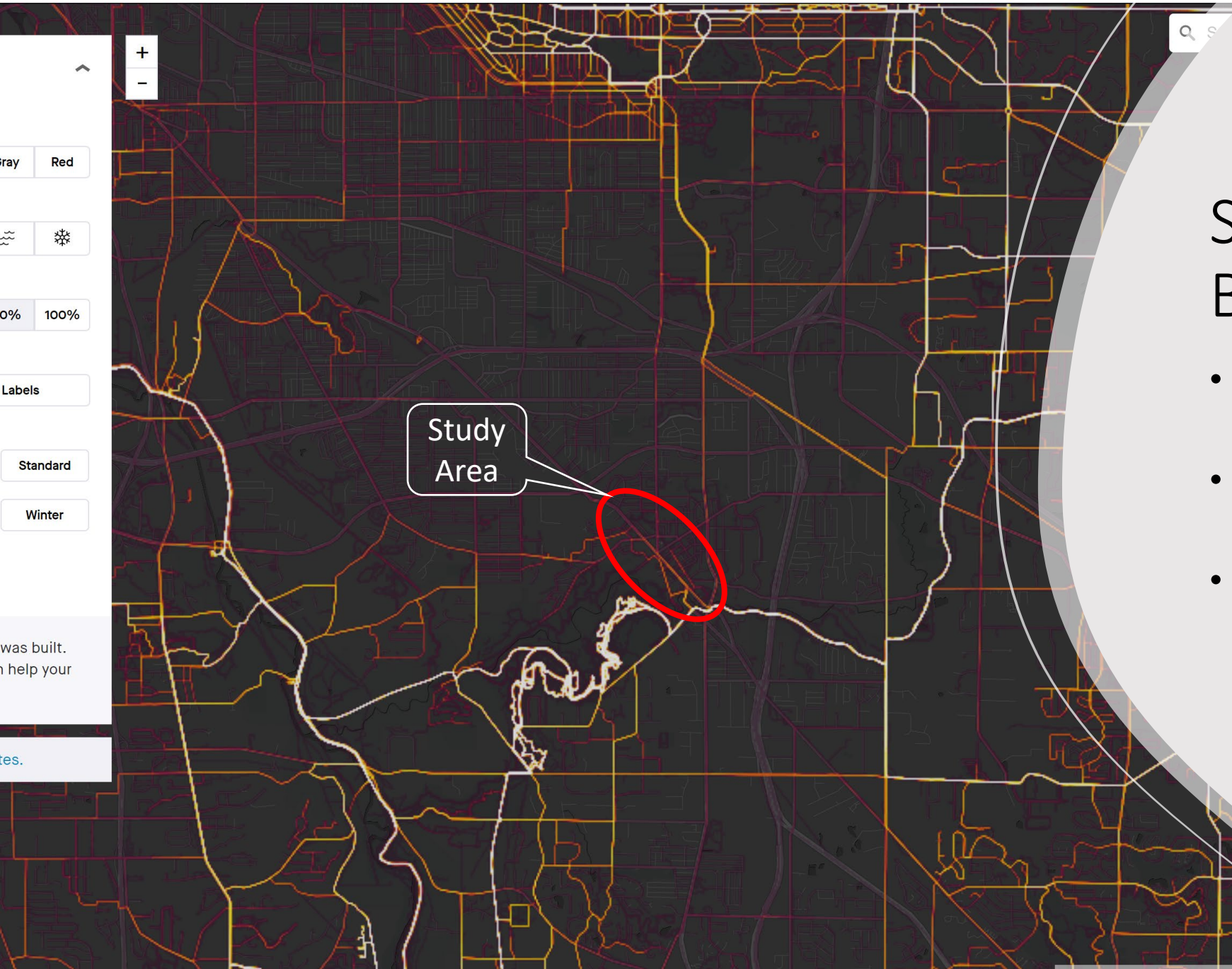
Level of Stress



- Tool to evaluate comfort level of cyclists along roadways
- Level of Stress evaluates:
 - Vehicle traffic volumes
 - Vehicle speeds
 - Truck volumes
 - Existing bicycle infrastructure
 - Intersection control devices
- Level of Stress Ranked by
 - LTS 1 – Comfortable for All Ages
 - LTS 2 – Comfortable for Most Ages
 - LTS 3 – Comfortable for Confident Cyclists
 - LTS 4 – Comfortable for Experts Only
 - LTS 5 – Uncomfortable/Road to Avoid

Level of Stress





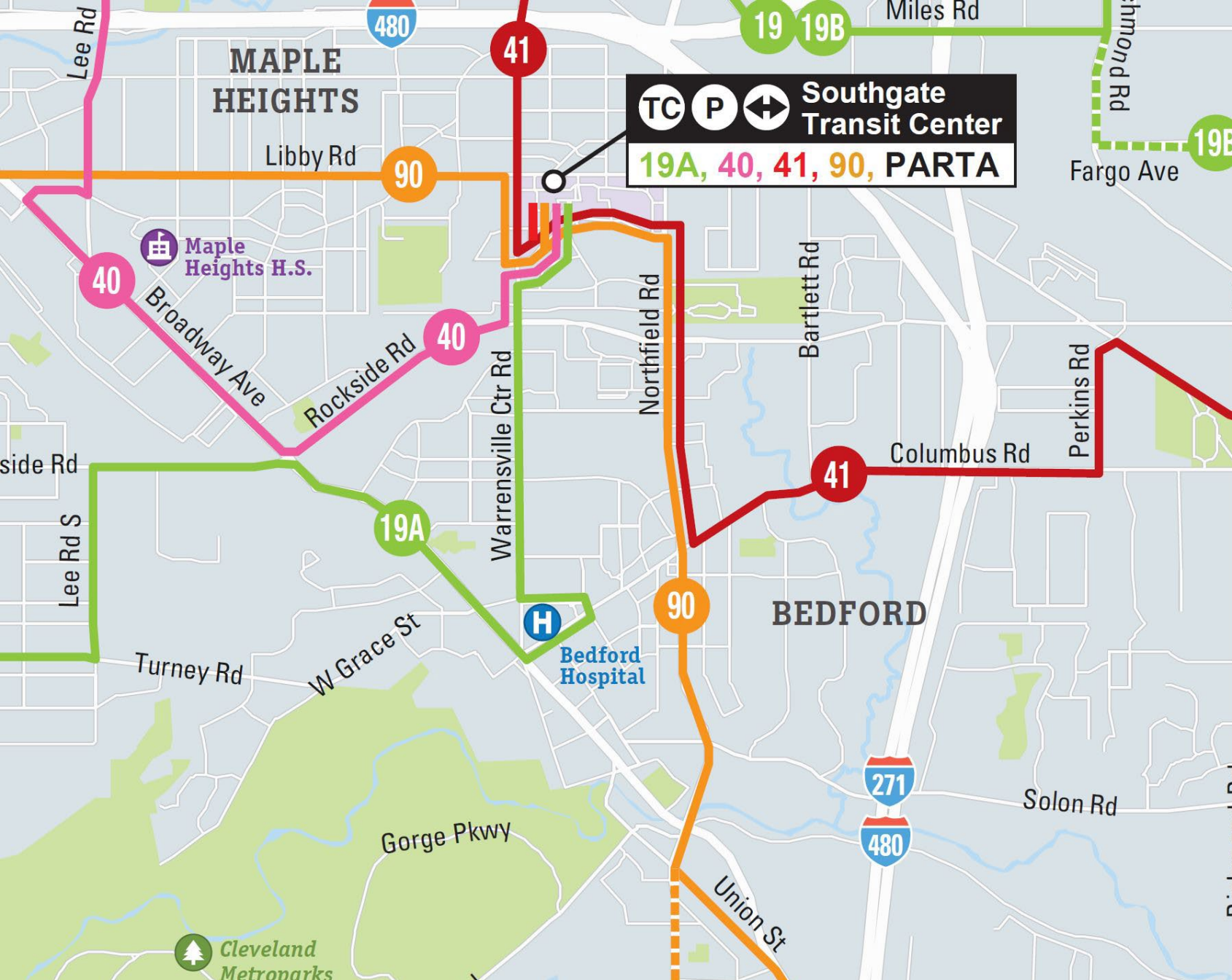
Strava Heat Map – Bike Riders

- Fitness App that tracks user data
- Brighter whites indicate high usage
- Most users bypassing Downtown Bedford

The Buckeye Trail

- 1,400-mile hiking trail that spans the State
- Runs south of Downtown Bedford
- Buckeye Trail Towns
 - Designation to promote trail and town
 - 19 Buckeye Trail Towns in Ohio
 - Chardon, Wakeman, Mentor





TC P Southgate Transit Center
 19A, 40, 41, 90, PARTA

RTA Routes

- Route 19A runs within study area
- Route 90 runs east of study area
- Transit waiting environments have limited amenities
 - Signage only



RTA Routes

- Route 19A runs within study area
- Route 90 runs east of study area
- Transit waiting environments have limited amenities
 - Signage only

Next Steps

- Gather public input from community survey and public meeting
- Develop Alternatives to enhance connectivity for each mode of travel to downtown
- Public Meeting 2 – Review Alternatives
 - November 2023



Questions??





Activity Boards

- Each board asks a question about traveling into and through Downtown Bedford
- Use pins and Post-It notes provided to answer questions on boards
- Feedback will help shape future improvements
- Activity Boards
 - Asset Connectivity Board
 - Connectivity Improvements Board
 - Traffic Handout