

Tree Survey:

The vegetation has been classified according to the general location and characteristics and is described below. Site walk to collect tree data performed on 03/10/2021.

Tree survey - Consists of a mix of deciduous hardwoods with few evergreens. Tree save area consists of oak species (Quercus), Black Gum (Nyssa sylvatica), American Beech (Fagus grandifolia), and American Ash (Fraxinus americana), with similar species scattered throughout.

Total Trees 12" DBH or greater per acre:	+/- 84 Trees
Pine Trees:	+/- 3 Trees
Hardwood Deciduous Trees & Other Conifers:	+/- 81 Trees

Tree Zone Legend

The vegetation has been classified according to general location and characteristics and is described below. Site walk to collect tree data performed on 03/10/2021.

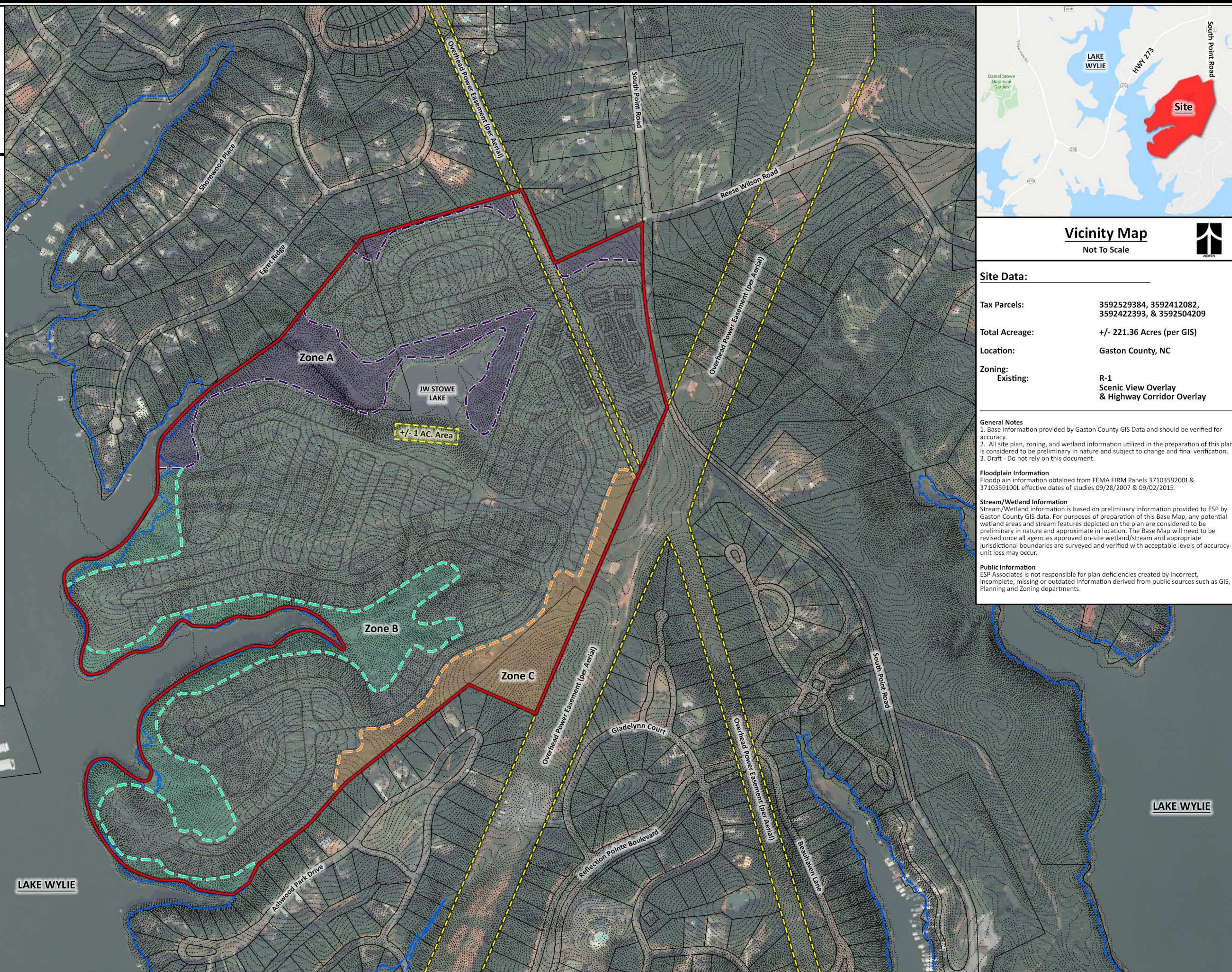
Zone A - Consists of a mix of deciduous hardwoods with few evergreens. Tree save area consists of oak species (Quercus), Black Gum (Nyssa sylvatica), American Beech (Fagus grandifolia), and American Ash (Fraxinus americana), with similar species scattered throughout.



Zone B - Located along lake Wylie, this area is similar to Zone A, but trees are smaller with more variety scattered throughout. Consists of Oak species (Quercus), American Beech (Fagus grandifolia), and Black gum (Nyssa sylvatica). Larger number of evergreens in this area compared to Zone A.



Zone C - Located along the overhead power easement, this area consisted of small deciduous trees and underbrush with patches of evergreens such as pine (Pinus) and cedar (Cedrus) scattered throughout.



Vicinity Map
Not To Scale

Site Data:

Tax Parcels:	3592529384, 3592412082, 3592422393, & 3592504209
Total Acreage:	+/- 221.36 Acres (per GIS)
Location:	Gaston County, NC
Zoning:	R-1
Existing:	Scenic View Overlay & Highway Corridor Overlay

General Notes
1. Base information provided by Gaston County GIS Data and should be verified for accuracy.
2. All site plan, zoning, and wetland information utilized in the preparation of this plan is considered to be preliminary in nature and subject to change and final verification.
3. Draft - Do not rely on this document.

Floodplain Information
Floodplain information obtained from FEMA FIRM Panels 3710359200J & 3710359100L effective dates of studies 09/28/2007 & 09/02/2015.

Stream/Wetland Information
Stream/Wetland information is based on preliminary information provided to ESP by Gaston County GIS data. For purposes of preparation of this Base Map, any potential wetland areas and stream features depicted on the plan are considered to be preliminary in nature and approximate in location. The Base Map will need to be revised once all agencies approved on-site wetland/stream and appropriate jurisdictional boundaries are surveyed and verified with acceptable levels of accuracy-unit loss may occur.

Public Information
ESP Associates is not responsible for plan deficiencies created by incorrect, incomplete, missing or outdated information derived from public sources such as GIS, Planning and Zoning departments.



DRAFT
DO NOT RELY ON THIS DOCUMENT

