



I-85 Improvements

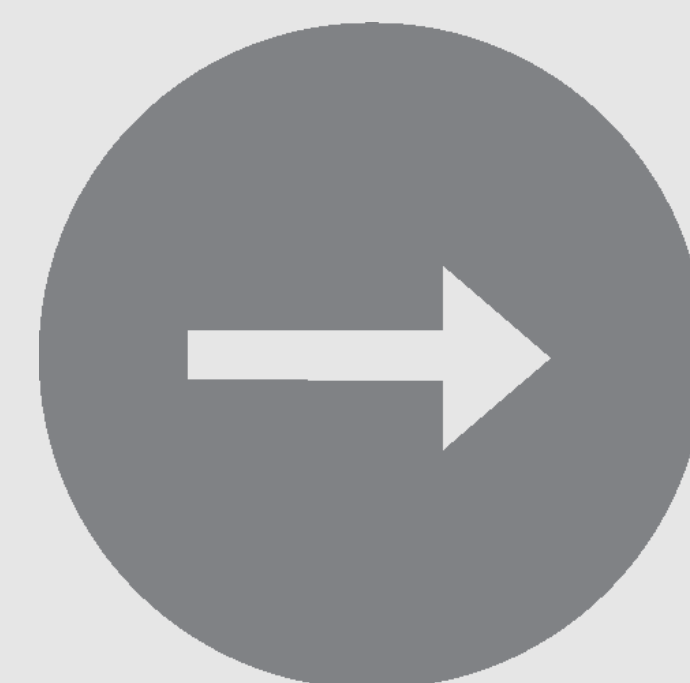
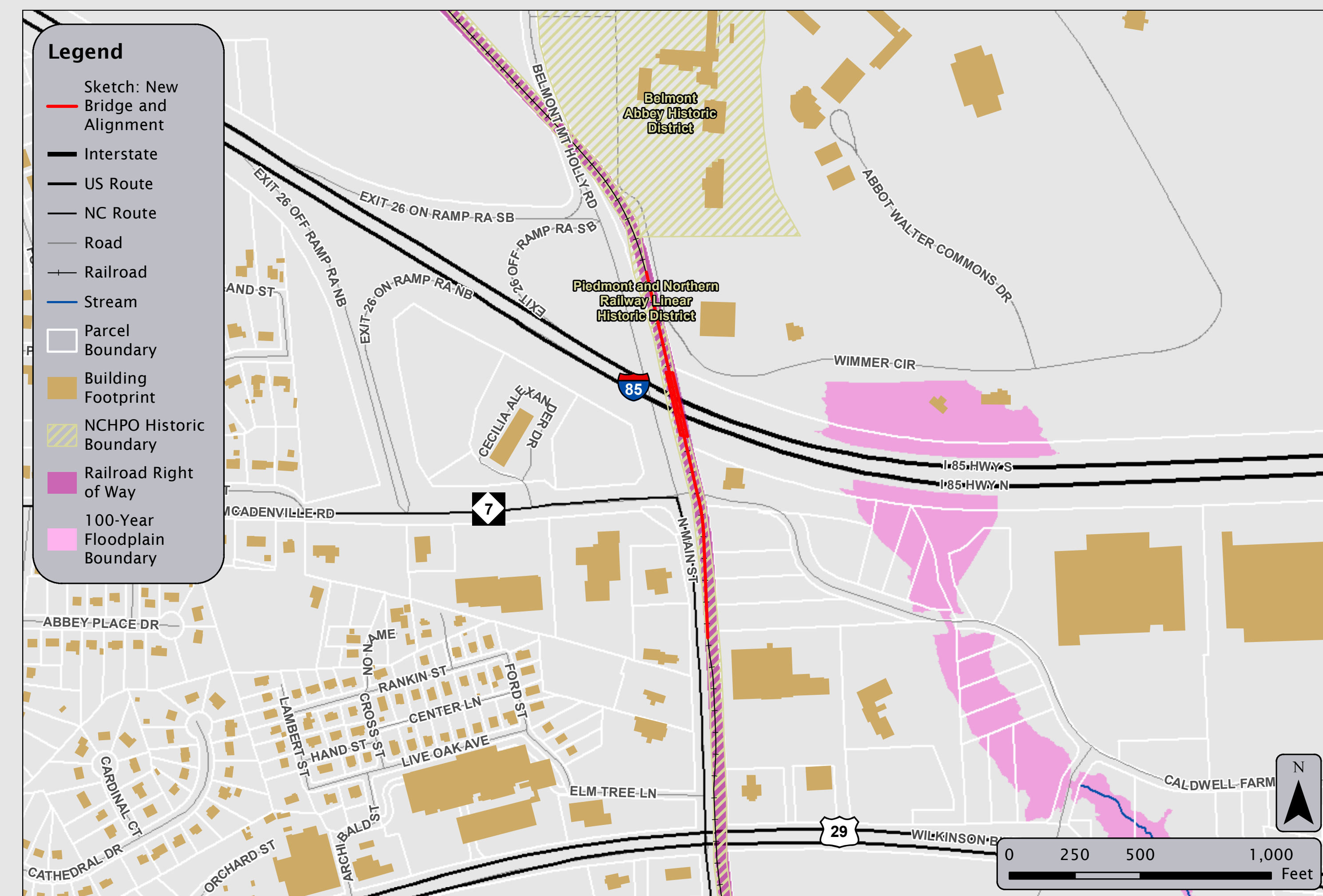
STIP Project Nos. I-5719/U-3608/
U-5800 | Gaston County

Railroad Bridge (NCDOT-Owned, Piedmont & Northern Railway-Operated)

Bridge 350150

Initial Option

Replace in Place



- Impacts Piedmont and Northern Railway Linear Historic District.
- No temporary detour bridge for this location. Railway line will remain out of service for the duration of construction.
- Bridge is part of a spur line that is out of service but will be a trail/trolley by the time the project is built. The replacement bridge will need to have a single track with width for a trail.
- May require closing the inner two lanes of I-85 and leaving the outer lanes open during construction.

Concept Recommended for Further Study

Replace in Place

