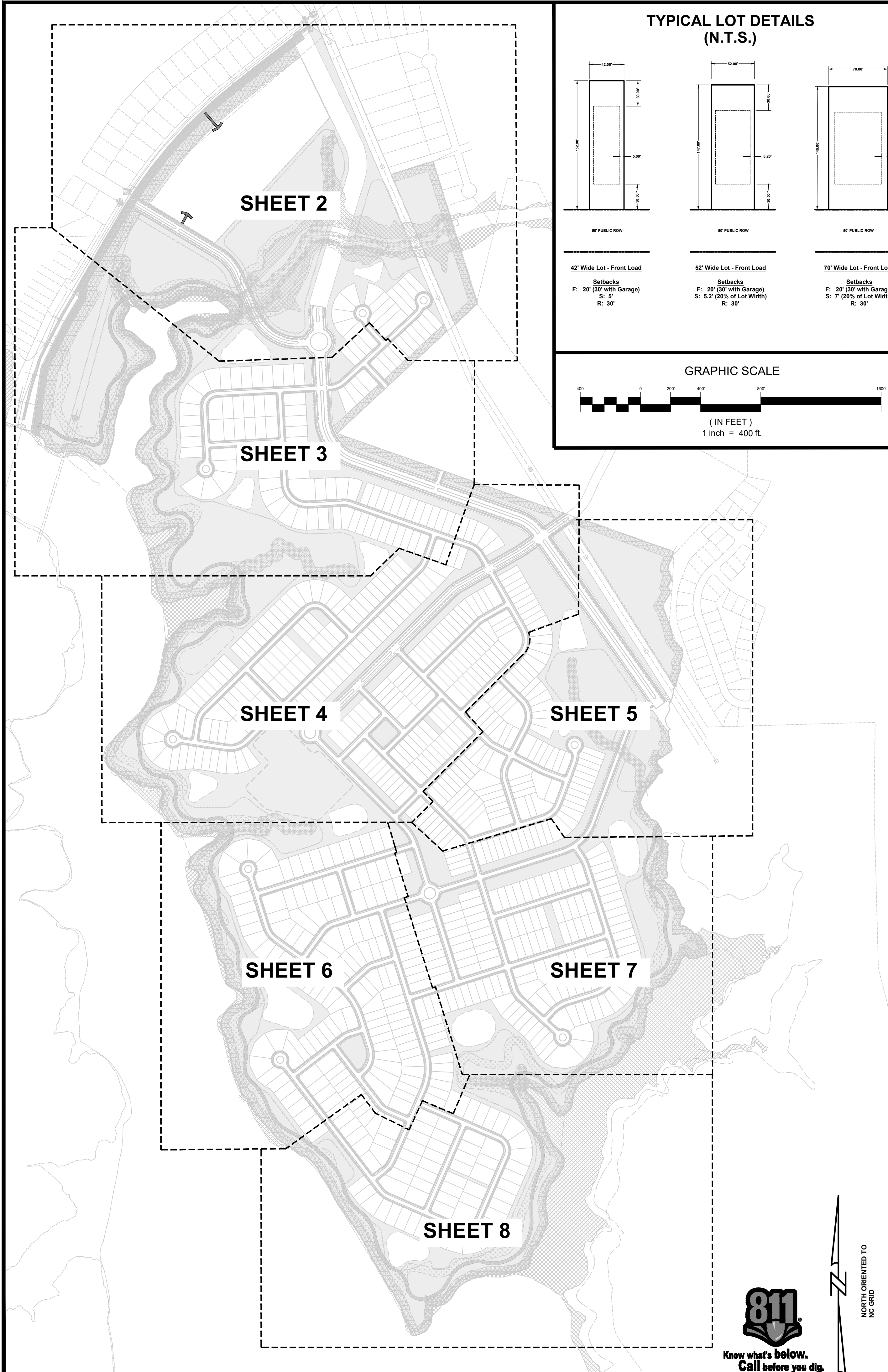
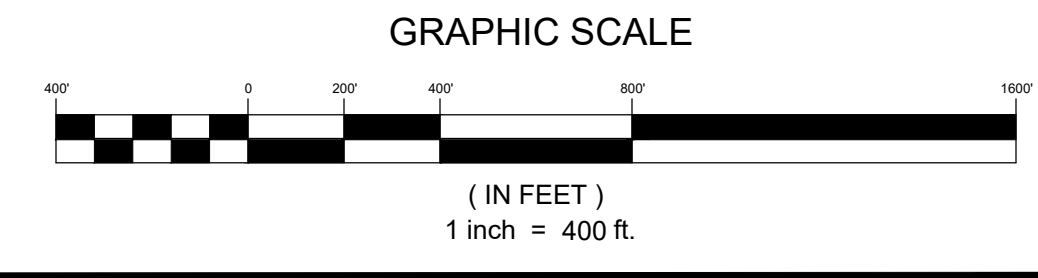
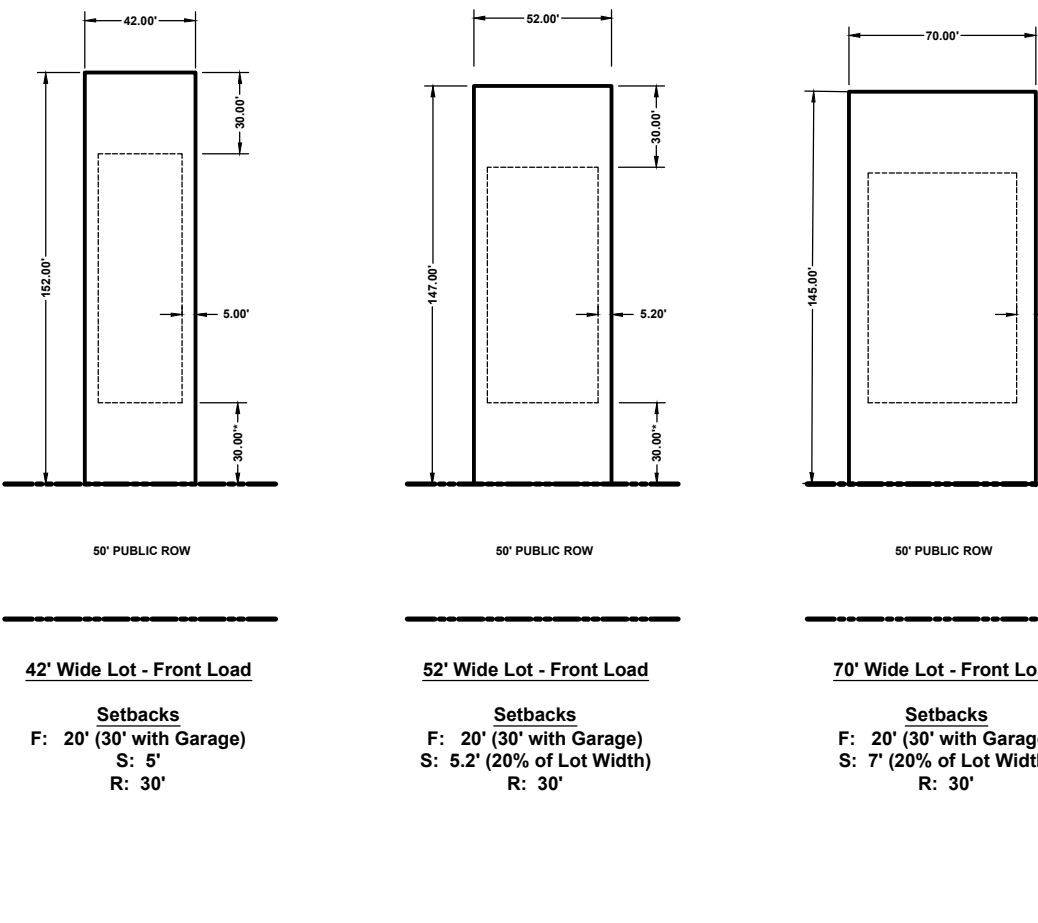


U:\2019 Projects (HYHN28 - South Fork Site (Public))\Submittal Working Drawings\2021-02-12_12_48_Schematic Plan Schematic\DWG\INDEX.dwg, Layout, white

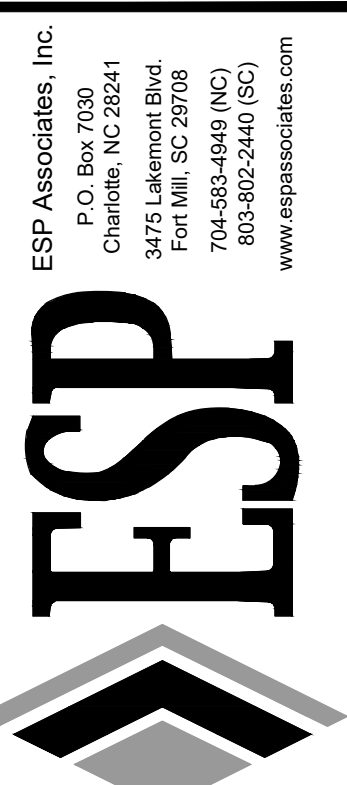
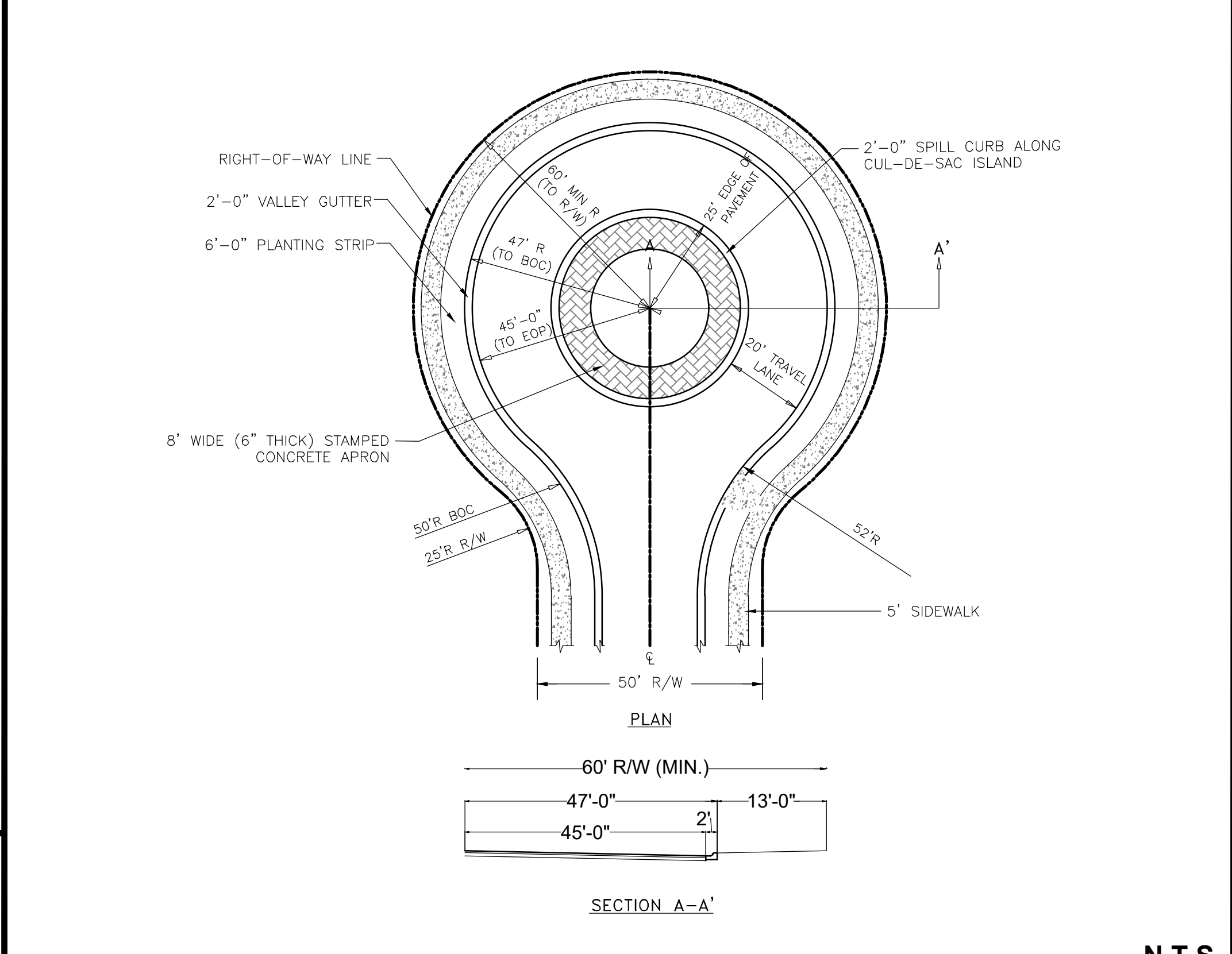
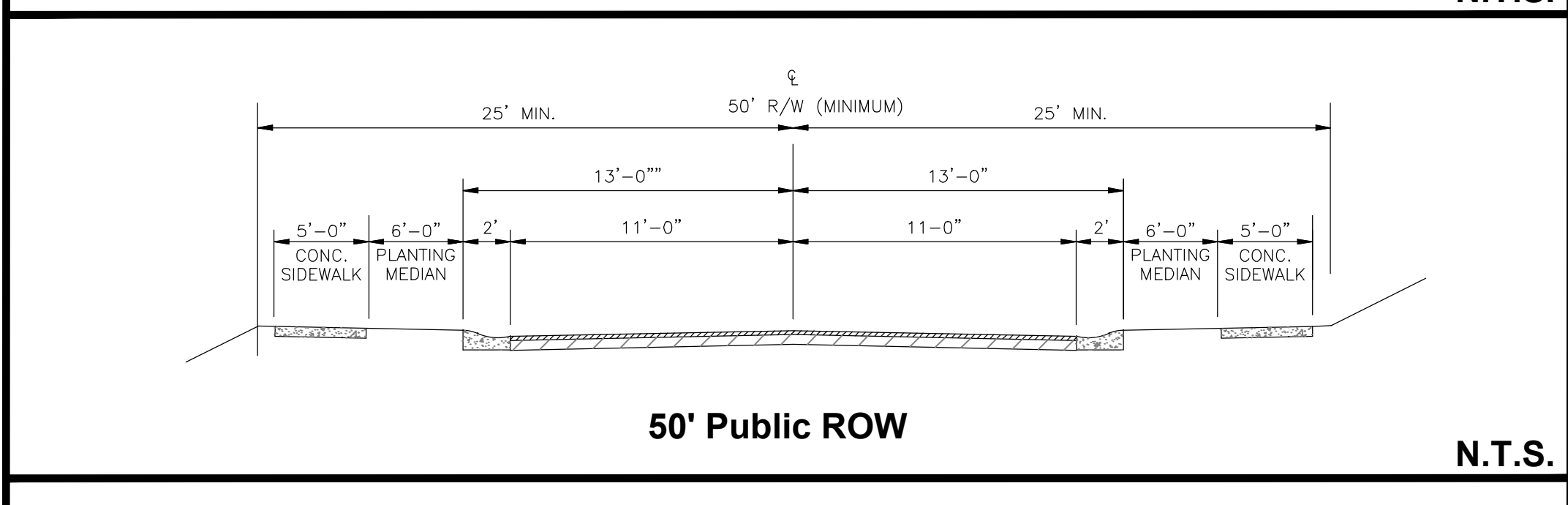
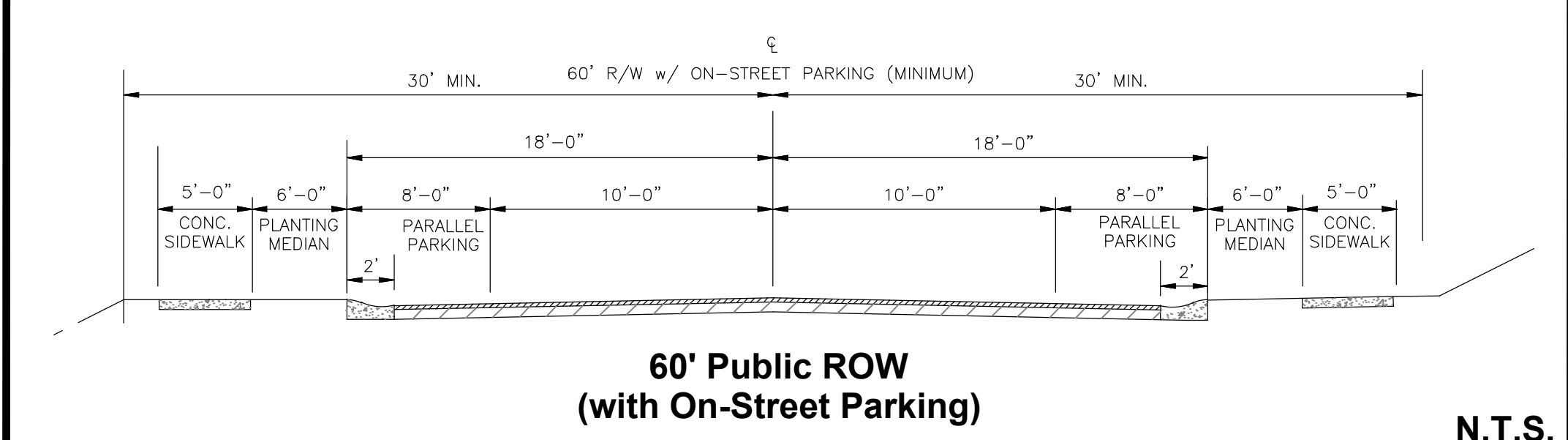
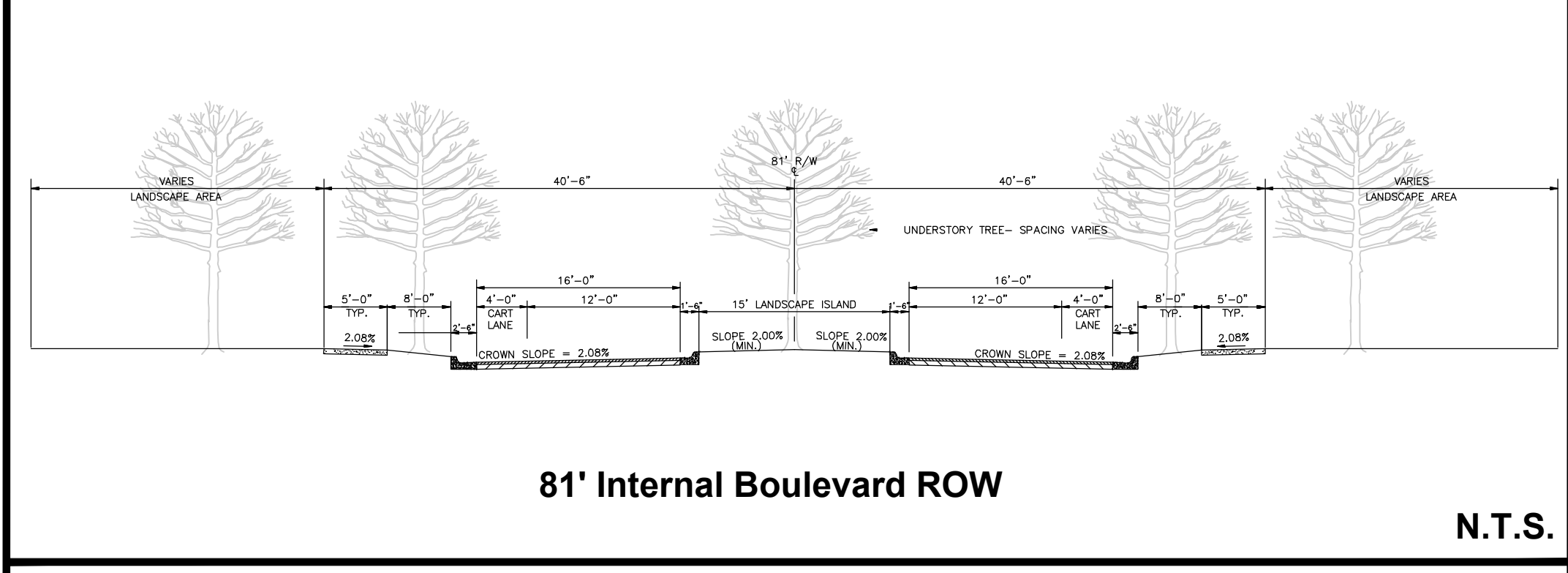
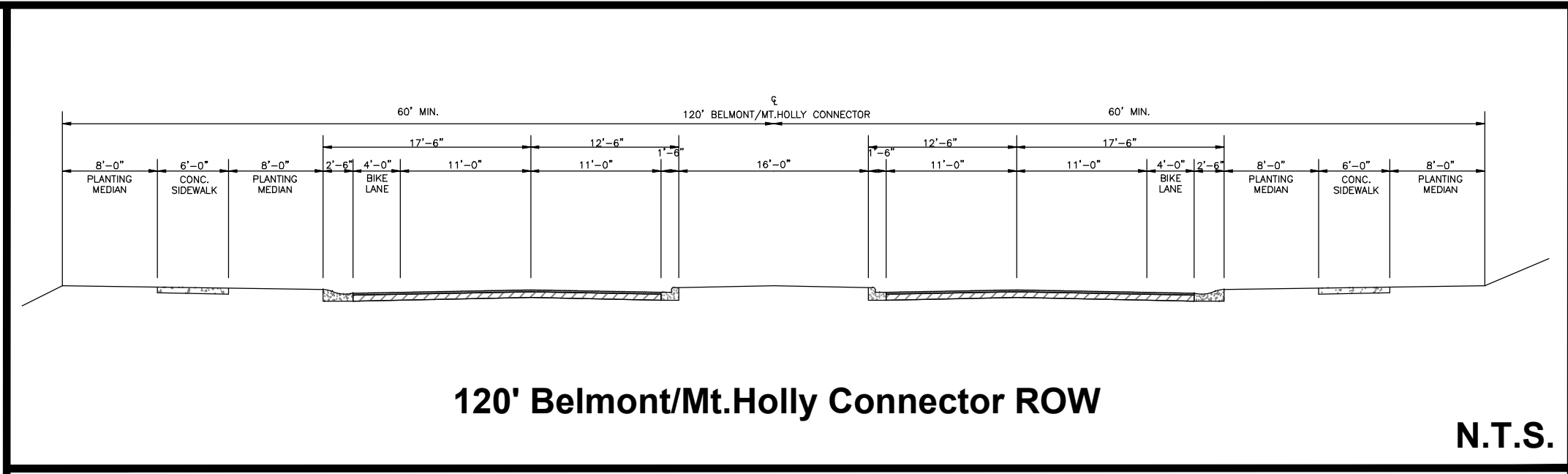


TYPICAL LOT DETAILS (N.T.S.)



BLOCK LENGTHS TABLE:

ROAD	ROAD FROM	ROAD TO	LENGTH (LF)	SHEET NO.	CONSTRAINT
STREET A	ARMSTRONG FORD DRIVE	STREET B	1,693.81	SHEET 2 OF 10	81' BOULEVARD
STREET B	EDGE OF PAVEMENT	STREET A	235.39	SHEET 2 OF 10	
STREET B	STREET A	STREET D	307.06	SHEET 3 OF 10	
STREET B	STREET D	STREET KK	1144.03	SHEET 3 OF 10	120' CONNECTOR
STREET B	STREET KK	STREET L	782.78	SHEET 3 OF 10	120' CONNECTOR
STREET KK	STREET B	PROPERTY LINE	129.49	SHEET 3 OF 10	
STREET L	STREET B	STREET L	1,330.67	SHEET 5 OF 10	120' CONNECTOR
STREET C	CUL-DE-SAC	STREET D	255.94	SHEET 2 OF 10	TOPOGRAPHY
STREET D	STREET C	CUL-DE-SAC	398.04	SHEET 2 OF 10	TOPOGRAPHY
STREET D	STREET E	STREET C	181.96	SHEET 3 OF 10	
STREET D	STREET B	STREET E	341.26	SHEET 3 OF 10	
STREET E	STREET D	PROP. LINE	222	SHEET 3 OF 10	
STREET D	STREET B	STREET G	280	SHEET 3 OF 10	
STREET D	STREET H	STREET F	805.41	SHEET 3 OF 10	TOPOGRAPHY
STREET D	STREET F	CUL-DE-SAC	157.82	SHEET 3 OF 10	
STREET H	STREET D	STREET F	340	SHEET 3 OF 10	
STREET H	STREET F	STREET I	1904.47	SHEET 3 OF 10	TOPOGRAPHY
STREET F	STREET D	STREET H	504	SHEET 3 OF 10	
STREET H	STREET I	STREET L	454.34	SHEET 4 OF 10	TOPOGRAPHY
STREET I	STREET H	STREET J	859.93	SHEET 4 OF 10	TOPOGRAPHY
STREET I	STREET J	STREET K	698.66	SHEET 4 OF 10	TOPOGRAPHY
STREET I	STREET K	COS	375.45	SHEET 4 OF 10	
STREET I	COS	STREET J	271.89	SHEET 4 OF 10	
STREET I	STREET J	CUL-DE-SAC	146.08	SHEET 4 OF 10	
STREET J	STREET I	STREET K	634.07	SHEET 4 OF 10	
STREET J	STREET K	COS	375.23	SHEET 4 OF 10	
STREET J	COS	STREET I	577.02	SHEET 4 OF 10	
STREET K	STREET J	STREET I	344.81	SHEET 4 OF 10	
STREET K	STREET I	STREET L	258.19	SHEET 4 OF 10	
STREET L	PROPERTY LINE	STREET B	242.93	SHEET 4 OF 10	
STREET L	STREET B	STREET H	409.76	SHEET 4 OF 10	
STREET L	STREET H	STREET N	819.56	SHEET 4 OF 10	81' BOULEVARD
STREET L	STREET N	STREET O	354	SHEET 4 OF 10	
STREET L	STREET O	STREET K	444.2	SHEET 4 OF 10	
STREET H	STREET L	STREET M	264	SHEET 4 OF 10	
STREET H	STREET M	STREET HH	582.34	SHEET 4 OF 10	
STREET M	STREET H	STREET N	354	SHEET 4 OF 10	
STREET M	STREET N	STREET N	750.26	SHEET 4 OF 10	TOPOGRAPHY
STREET N	STREET L	STREET M	264	SHEET 4 OF 10	
STREET N	STREET M	STREET Q	176.27	SHEET 4 OF 10	
STREET N	STREET Q	STREET H	177	SHEET 4 OF 10	
STREET N	STREET H	STREET S	177	SHEET 5 OF 10	
STREET N	STREET S	STREET HH	259.81	SHEET 5 OF 10	
STREET N	STREET HH	STREET T	408.40	SHEET 5 OF 10	
STREET HH	STREET N	STREET N	623.09	SHEET 5 OF 10	
STREET HH	STREET N	STREET T	495.46	SHEET 5 OF 10	
STREET O	STREET L	STREET P	264.47	SHEET 4 OF 10	
STREET O	STREET P	STREET Q	176.12	SHEET 4 OF 10	
STREET P	STREET K	STREET R	247	SHEET 4 OF 10	
STREET P	STREET R	STREET O	196.85	SHEET 4 OF 10	
STREET Q	STREET R	STREET O	196.69	SHEET 4 OF 10	
STREET Q	STREET O	STREET N	354	SHEET 4 OF 10	
STREET R	STREET P	STREET Q	176.03	SHEET 4 OF 10	
STREET R	STREET Q	STREET S	354	SHEET 4 OF 10	
STREET R	STREET S	STREET T	461.05	SHEET 5 OF 10	
STREET R	STREET T	STREET U	252	SHEET 5 OF 10	
STREET S	STREET R	STREET N	550.69	SHEET 5 OF 10	
STREET T	STREET R	STREET HH	353.15	SHEET 5 OF 10	
STREET T	STREET HH	STREET N	479.73	SHEET 5 OF 10	
STREET T	STREET N	CUL-DE-SAC	243.61	SHEET 5 OF 10	
STREET K	STREET L	STREET P	264	SHEET 4 OF 10	
STREET K	STREET P	STREET S	529.92	SHEET 4 OF 10	
STREET K	STREET S	STREET Y	229.94	SHEET 4 OF 10	
STREET S	STREET R	STREET K	246.77	SHEET 4 OF 10	
STREET K	STREET Y	STREET U	338.08	SHEET 7 OF 10	
STREET K	STREET U	STREET W	624.01	SHEET 7 OF 10	
STREET U	STREET K	STREET N	345.15	SHEET 7 OF 10	
STREET U	STREET R	STREET X	666.65	SHEET 7 OF 10	TOPOGRAPHY
STREET U	STREET X	STREET B	1130.75	SHEET 5 OF 10	TOPOGRAPHY
STREET R	STREET U	STREET V	277	SHEET 7 OF 10	
STREET R	STREET V	STREET W	344	SHEET 7 OF 10	
STREET R	STREET W	STREET X	446.96	SHEET 7 OF 10	
STREET R	STREET X	CUL-DE-SAC	167.13	SHEET 7 OF 10	
STREET V	STREET X	COS	324.71	SHEET 7 OF 10	
STREET V	COS	STREET R	376.20	SHEET 7 OF 10	
STREET W	STREET FF	STREET K	344	SHEET 7 OF 10	
STREET W	STREET K	STREET R	344.23	SHEET 7 OF 10	
STREET W	STREET X	COS	324.71	SHEET 7 OF 10	
STREET W	COS	STREET R	376.20	SHEET 7 OF 10	
STREET X	STREET U	STREET V	293.58	SHEET 7 OF 10	
STREET X	STREET V	STREET W	344	SHEET 7 OF 10	
STREET X	STREET W	STREET R	848.66	SHEET 7 OF 10	TOPOGRAPHY
STREET Y	STREET K	STREET Z	528.33	SHEET 6 OF 10	
STREET Y	STREET Z	STREET AA	574.1	SHEET 6 OF 10	
STREET Z	STREET Y	STREET U	339.88	SHEET 6 OF 10	
STREET U	STREET K	STREET FF	344	SHEET 6 OF 10	
STREET U	STREET FF	STREET Z	186.42	SHEET 6 OF 10	
STREET U	STREET Z	STREET AA	458.8	SHEET 6 OF 10	
STREET AA	CUL-DE-SAC	STREET Y	175.34	SHEET 6 OF 10	
STREET AA	STREET Y	STREET U	555.65	SHEET 6 OF 10	
STREET AA	STREET U	STREET BB	338.74	SHEET 6 OF 10	
STREET AA	STREET BB	STREET CC	302.4	SHEET 6 OF 10	
STREET AA	STREET CC	STREET EE	349.88	SHEET 6 OF 10	
STREET BB	STREET AA	STREET FF	416.47	SHEET 6 OF 10	
STREET FF	STREET U	STREET BB	342	SHEET 6 OF 10	
STREET FF	STREET BB	STREET W	279	SHEET 6 OF 10	
STREET FF	STREET W	COS	397.38	SHEET 6 OF 10	
STREET FF	COS	STREET DD	330.13	SHEET 6 OF 10	
STREET FF	STREET DD	STREET EE	128.62	SHEET 8 OF 10	
STREET FF	STREET EE	STREET DD	478.05	SHEET 8 OF 10	
STREET CC	STREET AA	STREET DD	230.32	SHEET 6 OF 10	
STREET CC	STREET DD	STREET DD	342	SHEET 6 OF 10	
STREET DD	CUL-DE-SAC	STREET CC	137.57	SHEET 6 OF 10	TOPOGRAPHY
STREET DD	STREET CC	STREET FF	868.8	SHEET 8 OF 10	
STREET DD	STREET FF	STREET GG	426.66	SHEET 8 OF 10	
STREET DD	STREET GG	STREET COS	626.37	SHEET 8 OF 10	
STREET DD	STREET COS	STREET GG	626.37	SHEET 8 OF 10	
STREET DD	STREET GG	STREET FF	340	SHEET 8 OF 10	
STREET GG	STREET DD	STREET DD	650	SHEET 8 OF 10	
STREET EE	STREET CC	STREET AA	262.43	SHEET 6 OF 10	
STREET EE	STREET AA	STREET FF	468.63	SHEET 8 OF 10	



ESP Associates, Inc.
P.O. Box 2030
Charlotte, NC 28241
3475 Lakewood Blvd.
Fort Mill, SC 29708
704-583-8440 (NC)
803-802-2440 (SC)
www.espsociates.com

NO.	DATE	REVISION	BY	SW	SW	SW
1	11.23.2020	REVISED PER STAFF COMMENTS				
2	01.20.2021	REVISED PER STAFF COMMENTS				
3	02.12.2021	REVISED PER STAFF COMMENTS				

PROJECT INFORMATION	
PROJECT MANAGER:	MM
DESIGNED BY:	AB
DRAWN BY:	SW
PROJECT NUMBER:	HN28.100
ORIGINAL DATE:	06/05/2020
SHEET:	INDEX

N.T.S.



NORTH ORIENTED TO NC GRID

PULTE GROUP, INC. CITY OF BELMONT, NORTH CAROLINA

SOUTH FORK SITE

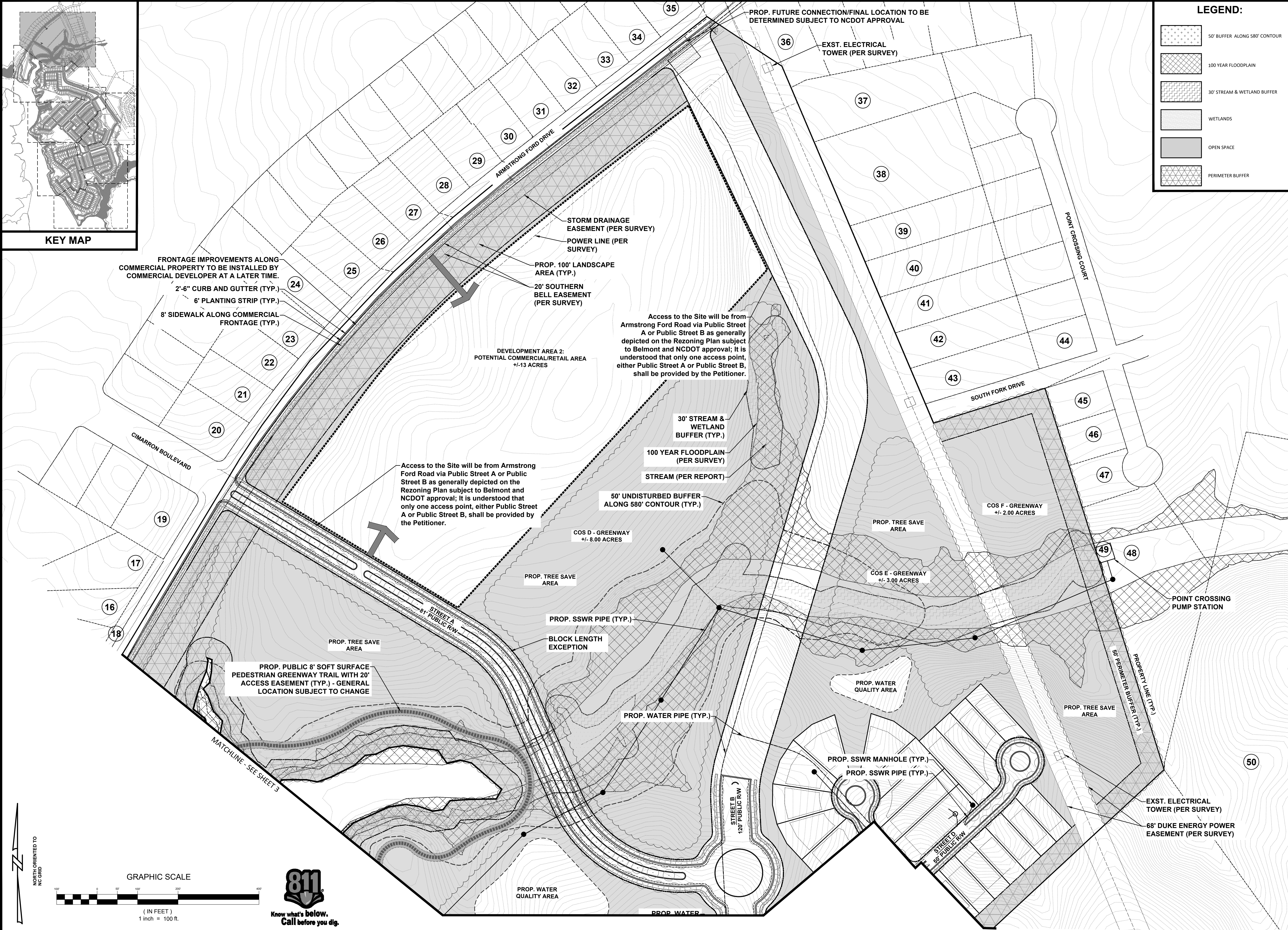
SCHEMATIC PLAN - INDEX



KEY MAP

LEGEND:

	50' BUFFER ALONG 580' CONTOUR
	100 YEAR FLOODPLAIN
	30' STREAM & WETLAND BUFFER
	WETLANDS
	OPEN SPACE
	PERIMETER BUFFER



FRONTAGE IMPROVEMENTS ALONG COMMERCIAL PROPERTY TO BE INSTALLED BY COMMERCIAL DEVELOPER AT A LATER TIME.
 2'-6" CURB AND GUTTER (TYP.)
 6' PLANTING STRIP (TYP.)
 8' SIDEWALK ALONG COMMERCIAL FRONTAGE (TYP.)

STORM DRAINAGE EASEMENT (PER SURVEY)
 POWER LINE (PER SURVEY)
 PROP. 100' LANDSCAPE AREA (TYP.)
 20' SOUTHERN BELL EASEMENT (PER SURVEY)

DEVELOPMENT AREA 2: POTENTIAL COMMERCIAL/RETAIL AREA +/-13 ACRES

Access to the Site will be from Armstrong Ford Road via Public Street A or Public Street B as generally depicted on the Rezoning Plan subject to Belmont and NCDOT approval; It is understood that only one access point, either Public Street A or Public Street B, shall be provided by the Petitioner.

Access to the Site will be from Armstrong Ford Road via Public Street A or Public Street B as generally depicted on the Rezoning Plan subject to Belmont and NCDOT approval; It is understood that only one access point, either Public Street A or Public Street B, shall be provided by the Petitioner.

50' UNDISTURBED BUFFER ALONG 580' CONTOUR (TYP.)

COS D - GREENWAY +/- 8.00 ACRES

PROP. TREE SAVE AREA

COS F - GREENWAY +/- 2.00 ACRES

COS E - GREENWAY +/- 3.00 ACRES

PROP. TREE SAVE AREA

PROP. SSWR PIPE (TYP.)

BLOCK LENGTH EXCEPTION

PROP. WATER PIPE (TYP.)

PROP. SSWR MANHOLE (TYP.)

PROP. SSWR PIPE (TYP.)

POINT CROSSING PUMP STATION

PROP. TREE SAVE AREA

EXST. ELECTRICAL TOWER (PER SURVEY)

68' DUKE ENERGY POWER EASEMENT (PER SURVEY)

PROP. PUBLIC 8' SOFT SURFACE PEDESTRIAN GREENWAY TRAIL WITH 20' ACCESS EASEMENT (TYP.) - GENERAL LOCATION SUBJECT TO CHANGE

MATCHLINE - SEE SHEET 3

NORTH ORIENTED TO
 NO GRID

GRAPHIC SCALE
 (IN FEET)
 1 inch = 100 ft.

Know what's below.
 Call before you dig.

ESP Associates, Inc.
 P.O. Box 7003
 Charlotte, NC 28241
 3475 Lakewood Blvd.
 Fort Mill, SC 29708
 704-583-0440 (NC)
 803-802-2440 (SC)
 www.espsociates.com

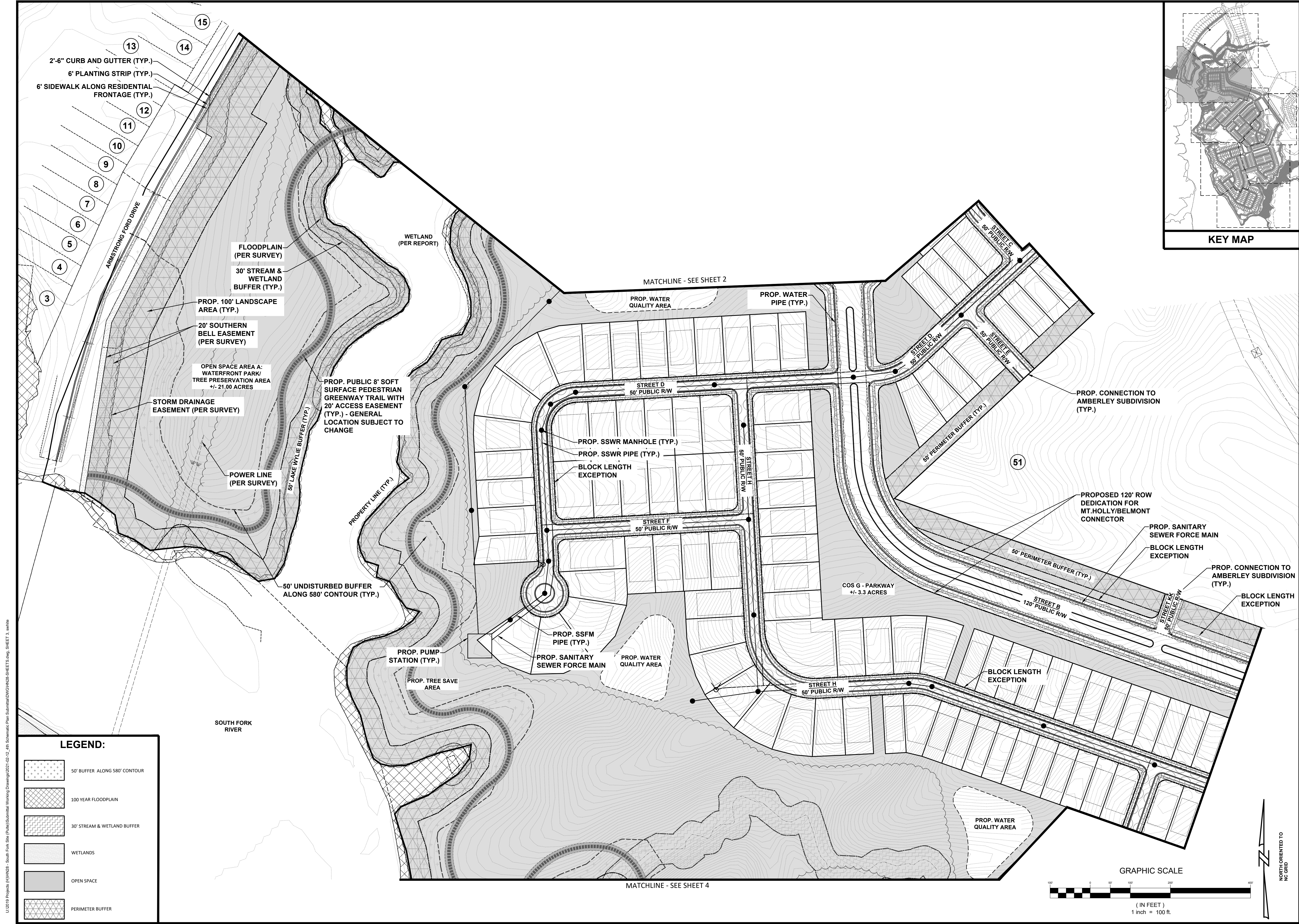
NO.	DATE	REVISION
1	11.23.2020	REVISED PER STAFF COMMENTS
2	01.20.2021	REVISED PER STAFF COMMENTS
3	02.12.2021	REVISED PER STAFF COMMENTS

BY: SW, SW, SW

PROJECT INFORMATION
 PROJECT MANAGER: MM
 DESIGNED BY: AB
 DRAWN BY: SW
 PROJECT NUMBER: HN28.100
 ORIGINAL DATE: 06/05/2020
 SHEET:
2 OF 10

SCHEMATIC PLAN
 (SHEET 2 of 10)

SOUTH FORK SITE
 CITY OF BELMONT, NORTH CAROLINA
 PULTE GROUP, INC.



2'-6" CURB AND GUTTER (TYP.)
 6' PLANTING STRIP (TYP.)
 6' SIDEWALK ALONG RESIDENTIAL FRONTAGE (TYP.)

FLOODPLAIN (PER SURVEY)
 30' STREAM & WETLAND BUFFER (TYP.)
 PROP. 100' LANDSCAPE AREA (TYP.)
 20' SOUTHERN BELL EASEMENT (PER SURVEY)

OPEN SPACE AREA A:
 WATERFRONT PARK/
 TREE PRESERVATION AREA
 +/- 21.00 ACRES

STORM DRAINAGE EASEMENT (PER SURVEY)

POWER LINE (PER SURVEY)

PROP. PUBLIC 8' SOFT SURFACE PEDESTRIAN GREENWAY TRAIL WITH 20' ACCESS EASEMENT (TYP.) - GENERAL LOCATION SUBJECT TO CHANGE

50' UNDISTURBED BUFFER ALONG 580' CONTOUR (TYP.)

WETLAND (PER REPORT)

MATCHLINE - SEE SHEET 2

PROP. WATER QUALITY AREA

PROP. WATER PIPE (TYP.)

PROP. SSWR MANHOLE (TYP.)
 PROP. SSWR PIPE (TYP.)
 BLOCK LENGTH EXCEPTION

STREET F
 50' PUBLIC R/W

PROP. SSFM PIPE (TYP.)
 PROP. SANITARY SEWER FORCE MAIN

PROP. WATER QUALITY AREA

COS G - PARKWAY
 +/- 3.3 ACRES

STREET H
 50' PUBLIC R/W

PROP. WATER QUALITY AREA

PROP. CONNECTION TO AMBERLEY SUBDIVISION (TYP.)

PROPOSED 120' ROW DEDICATION FOR MT. HOLLY/BELMONT CONNECTOR

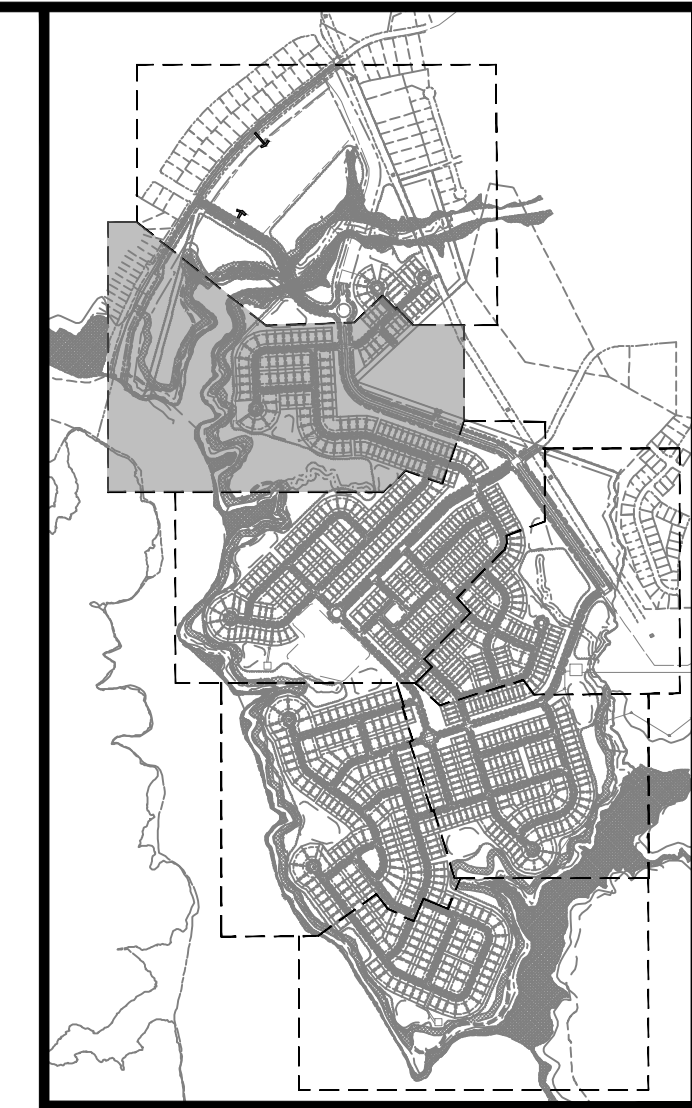
PROP. SANITARY SEWER FORCE MAIN
 BLOCK LENGTH EXCEPTION

PROP. CONNECTION TO AMBERLEY SUBDIVISION (TYP.)

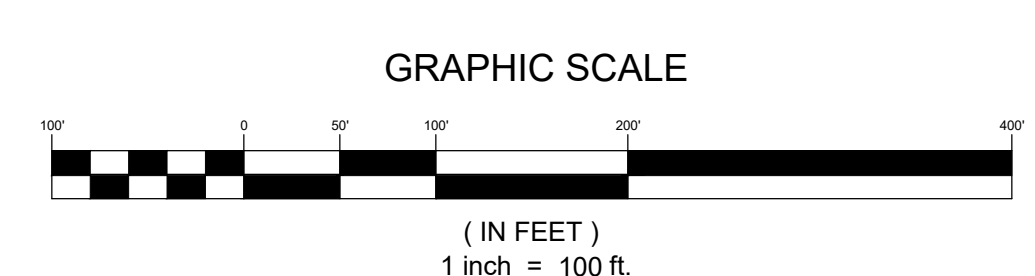
BLOCK LENGTH EXCEPTION

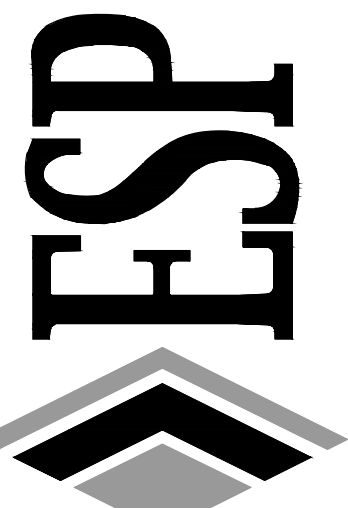
LEGEND:

- 50' BUFFER ALONG 580' CONTOUR
- 100 YEAR FLOODPLAIN
- 30' STREAM & WETLAND BUFFER
- WETLANDS
- OPEN SPACE
- PERIMETER BUFFER



KEY MAP





ESP Associates, Inc.
 P.O. Box 2020
 Charlotte, NC 28241
 3475 Lakemont Blvd.
 Fort Mill, SC 29708
 704-583-0449 (NC)
 803-502-2440 (SC)
 www.espassociates.com

NO.	DATE	REVISION	BY
1	11.23.2020	REVISED PER STAFF COMMENTS	SW
2	01.20.2021	REVISED PER STAFF COMMENTS	SW
3	02.12.2021	REVISED PER STAFF COMMENTS	SW

SCHEMATIC PLAN
(SHEET 3 OF 10)

SOUTH FORK SITE
CITY OF BELMONT, NORTH CAROLINA
PULTE GROUP, INC.

PROJECT INFORMATION	
PROJECT MANAGER:	MM
DESIGNED BY:	AB
DRAWN BY:	SW
PROJECT NUMBER:	HN28.100
ORIGINAL DATE:	06/05/2020

3 OF 10

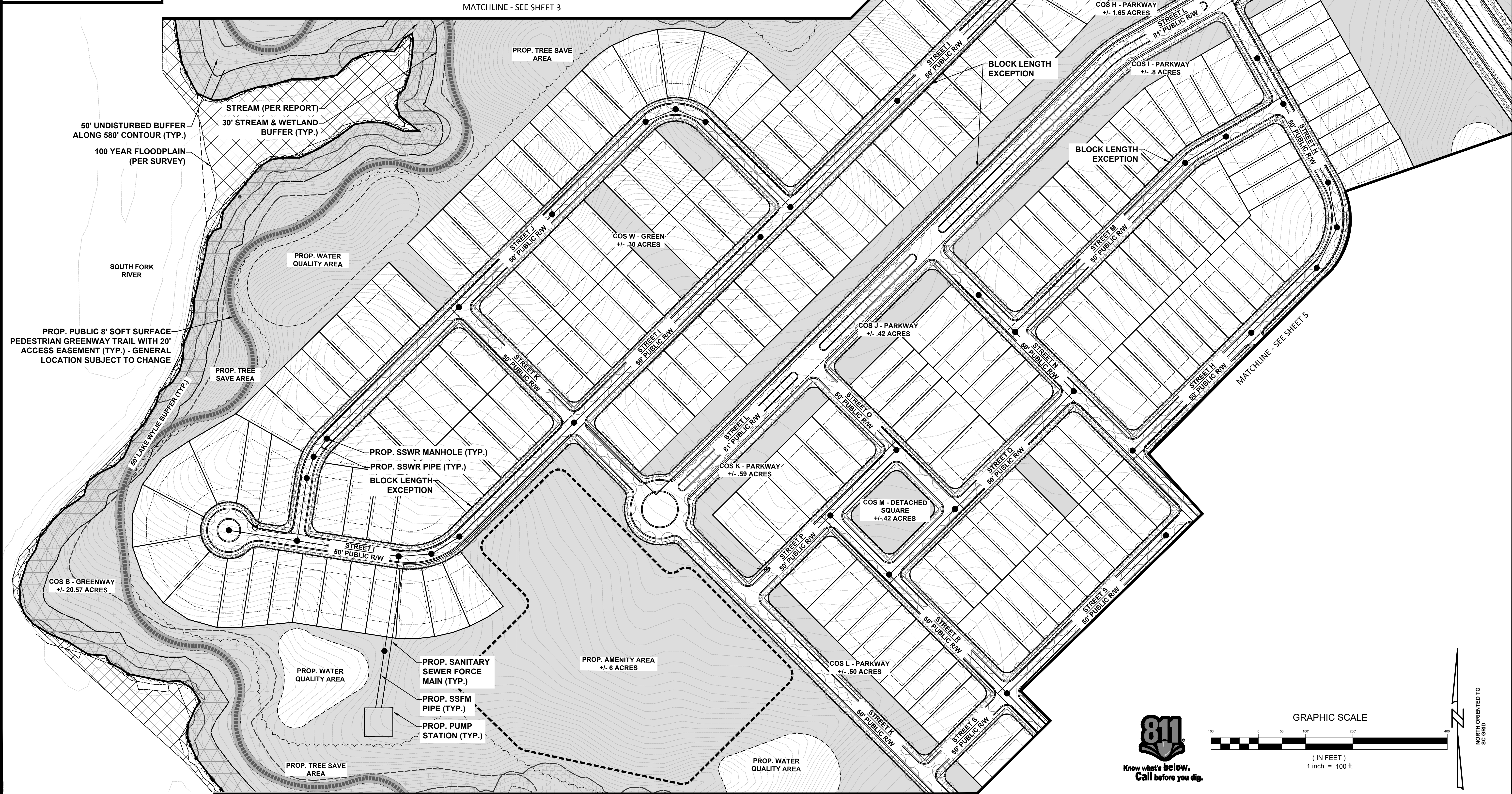
U:\2019 Projects\H\HN28 - South Fork Site (Pulte)\Submittal Working Drawings\2021-02-12_Air Schematic Plan\Submittal\DWG\NSB-SHEETS.dwg, SHEET 3, white



LEGEND:

- 50' BUFFER ALONG 580' CONTOUR
- 100 YEAR FLOODPLAIN
- 30' STREAM & WETLAND BUFFER
- WETLANDS
- OPEN SPACE
- PERIMETER BUFFER

KEY MAP



ESP Associates, Inc.
 P.O. Box 7030
 Charlotte, NC 28241
 3475 Lakemont Blvd.
 Fort Mill, SC 29708
 704-583-0440 (NC)
 803-802-2440 (SC)
 www.espsociates.com

NO.	DATE	REVISION	BY
1	11.23.2020	REVISED PER STAFF COMMENTS	SW
2	01.20.2021	REVISED PER STAFF COMMENTS	SW
3	02.12.2021	REVISED PER STAFF COMMENTS	SW

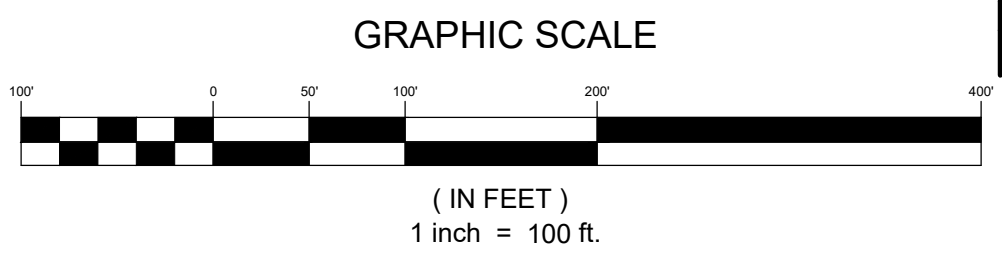
SCHEMATIC PLAN
 (SHEET 4 OF 10)

SOUTH FORK SITE
 CITY OF BELMONT, NORTH CAROLINA

PULTE GROUP, INC.

PROJECT INFORMATION	
PROJECT MANAGER:	MM
DESIGNED BY:	AB
DRAWN BY:	SW
PROJECT NUMBER:	HN28.100
ORIGINAL DATE:	06/05/2020

SHEET:
4 OF 10

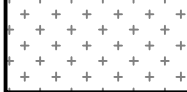

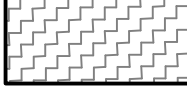





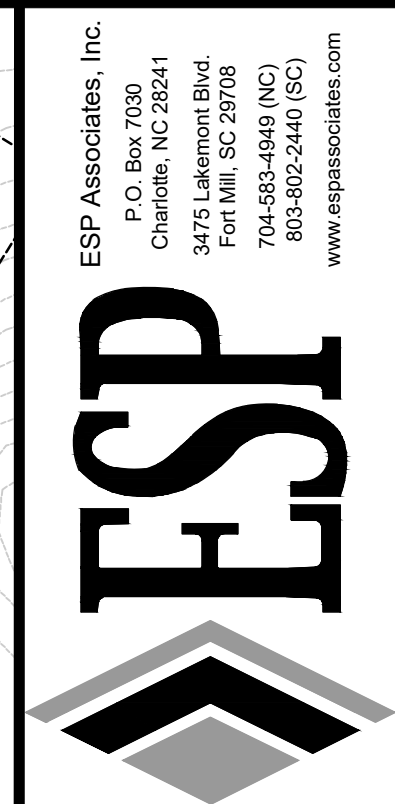
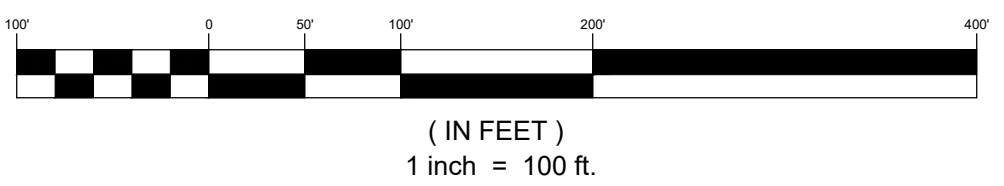
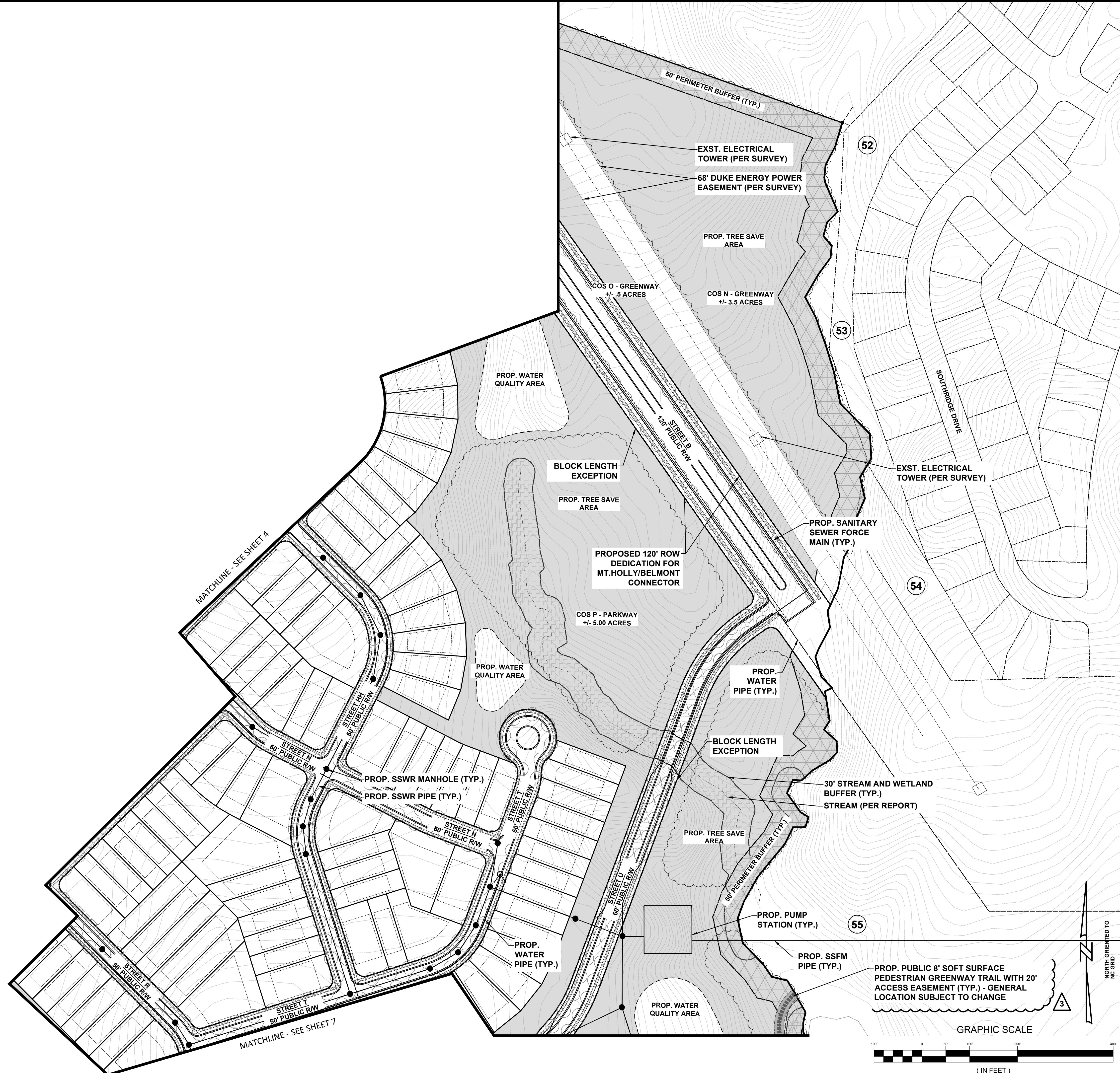
U:\2019 Projects\HVIN28 - South Fork Site (Pulte)\Submittal Working Drawings\2021-02-12_Air Schematic Plan\Submittal\DWG\HN28-SHEETS.dwg - SHEET 4 - white



KEY MAP

LEGEND:

-  50' BUFFER ALONG 580' CONTOUR
-  100 YEAR FLOODPLAIN
-  30' STREAM & WETLAND BUFFER
-  WETLANDS
-  OPEN SPACE
-  PERIMETER BUFFER



NO.	DATE	REVISION	BY
1	11.23.2020	REVISED PER STAFF COMMENTS	SW
2	01.20.2021	REVISED PER STAFF COMMENTS	SW
3	02.12.2021	REVISED PER STAFF COMMENTS	SW

SCHEMATIC PLAN
(SHEET 5 OF 10)

SOUTH FORK SITE
CITY OF BELMONT, NORTH CAROLINA
PULTE GROUP, INC.

PROJECT INFORMATION	
PROJECT MANAGER:	MM
DESIGNED BY:	AB
DRAWN BY:	SW
PROJECT NUMBER:	HN28.100
ORIGINAL DATE:	06/05/2020

SHEET:
5 OF 10

U:\2019 Projects (HYHN28 - South Fork Site (Pulte))\Submittal Working Drawings\2021-02-12_Air Schematic Plan\Submittal\DWG\N08-SHEETS.dwg, SHEET 5, white

MATCHLINE - SEE SHEET 4

30' STREAM & WETLAND BUFFER (TYP.)

PROP. TREE SAVE AREA

100 YEAR FLOODPLAIN (PER SURVEY)

PROP. SSWR MANHOLE (TYP.)
PROP. SSWR PIPE (TYP.)
PROP. WATER PIPE (TYP.)

60' LAKE WILIE BUFFER (TYP.)

SOUTH FORK RIVER

PROP. PUBLIC 8' SOFT SURFACE PEDESTRIAN GREENWAY TRAIL WITH 20' ACCESS EASEMENT (TYP.) - GENERAL LOCATION SUBJECT TO CHANGE

50' UNDISTURBED BUFFER ALONG 580' CONTOUR (TYP.)

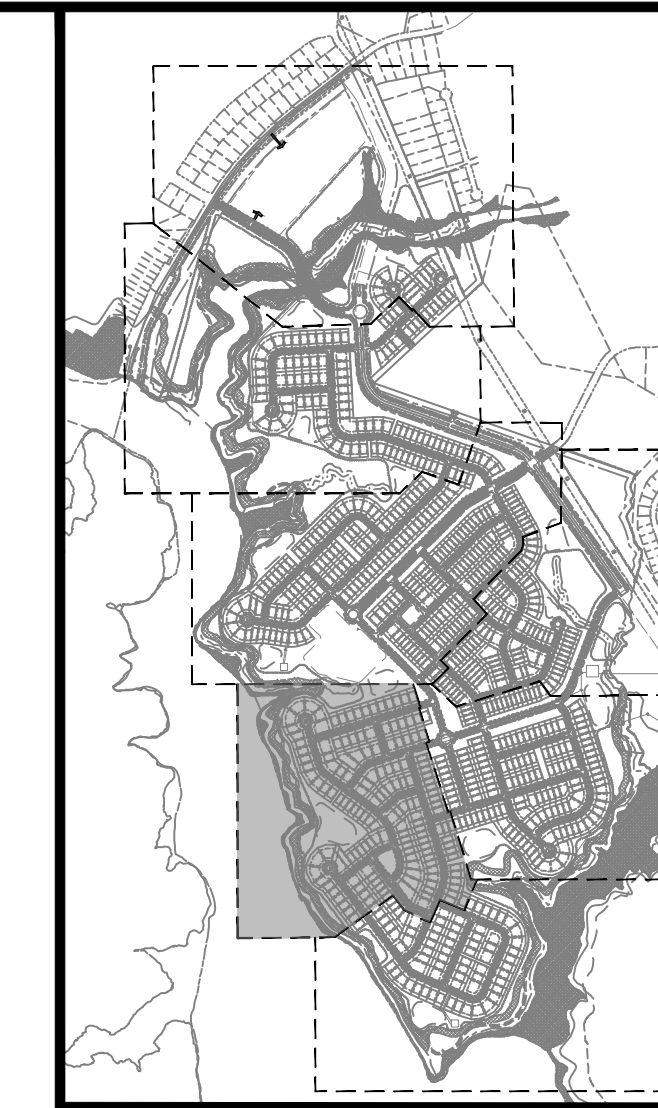
PROP. WATER QUALITY AREA

PROP. TREE SAVE AREA

COS Q - GREEN +/- .60 ACRES

PROP. SSWR MANHOLE (TYP.)
PROP. SSWR PIPE (TYP.)
PROP. WATER PIPE (TYP.)

MATCHLINE - SEE SHEET 8



KEY MAP

LEGEND:

- 50' BUFFER ALONG 580' CONTOUR
- 100 YEAR FLOODPLAIN
- 30' STREAM & WETLAND BUFFER
- WETLANDS
- OPEN SPACE
- PERIMETER BUFFER

ESP Associates, Inc.
P.O. Box 7030
Charlotte, NC 28241
3475 Lakewood Blvd.
Fort Mill, SC 29708
704-583-0440 (NC)
803-802-2440 (SC)
www.espassociates.com

NO.	DATE	REVISION	BY
1	11.23.2020	REVISED PER STAFF COMMENTS	SW
2	01.20.2021	REVISED PER STAFF COMMENTS	SW
3	02.12.2021	REVISED PER STAFF COMMENTS	SW

SCHEMATIC PLAN
(SHEET 6 OF 10)

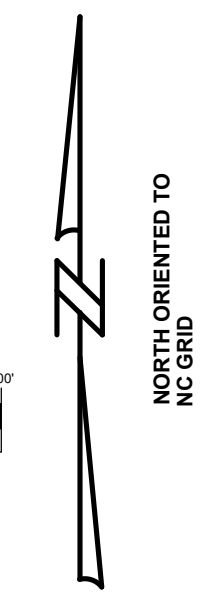
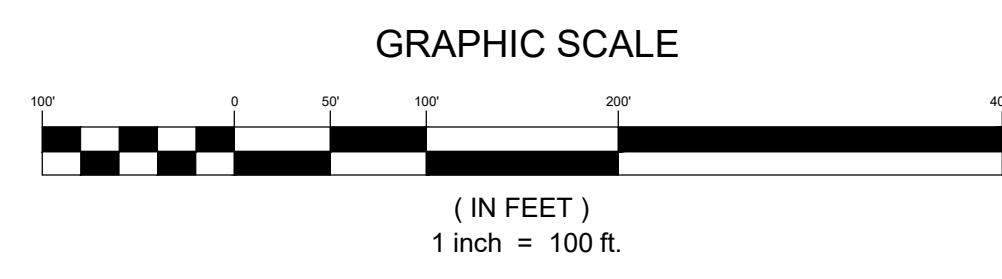
SOUTH FORK SITE
CITY OF BELMONT, NORTH CAROLINA
PULTE GROUP, INC.

PROJECT INFORMATION

PROJECT MANAGER:	MM
DESIGNED BY:	AB
DRAWN BY:	SW
PROJECT NUMBER:	HN28.100
ORIGINAL DATE:	06/05/2020

SHEET:
6 OF 10

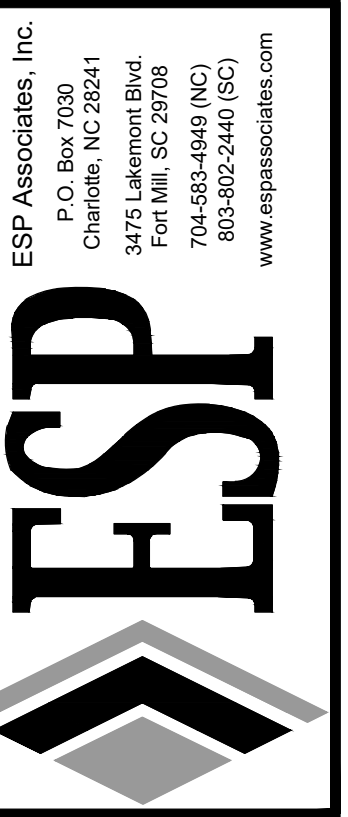
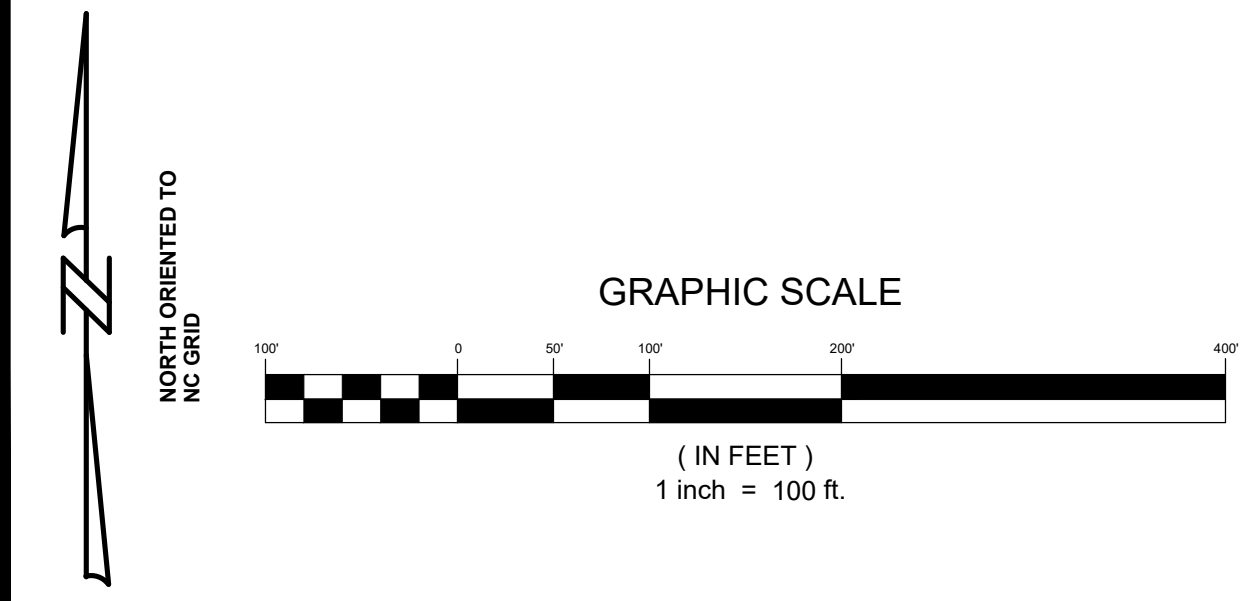
U:\2019 Projects (HYDRA) - South Fork Site (Pulte)\Submittal Working Drawings\2021-02-12_Air Schematic Plan\Submittal\DWG\SUB-SHEETS.dwg, SHEET 6, mwhite





LEGEND:

	50' BUFFER ALONG 580' CONTOUR
	100 YEAR FLOODPLAIN
	30' STREAM & WETLAND BUFFER
	WETLANDS
	OPEN SPACE
	PERIMETER BUFFER



ESP Associates, Inc.
P.O. Box 7003
Charlotte, NC 28241
3475 Lakemont Blvd.
Fort Mill, SC 29708
704-583-0440 (NC)
803-502-2440 (SC)
www.espsociates.com

NO.	DATE	REVISION	BY
1	11.23.2020	REVISED PER STAFF COMMENTS	SW
2	01.20.2021	REVISED PER STAFF COMMENTS	SW
3	02.12.2021	REVISED PER STAFF COMMENTS	SW

SCHEMATIC PLAN
(SHEET 7 OF 10)

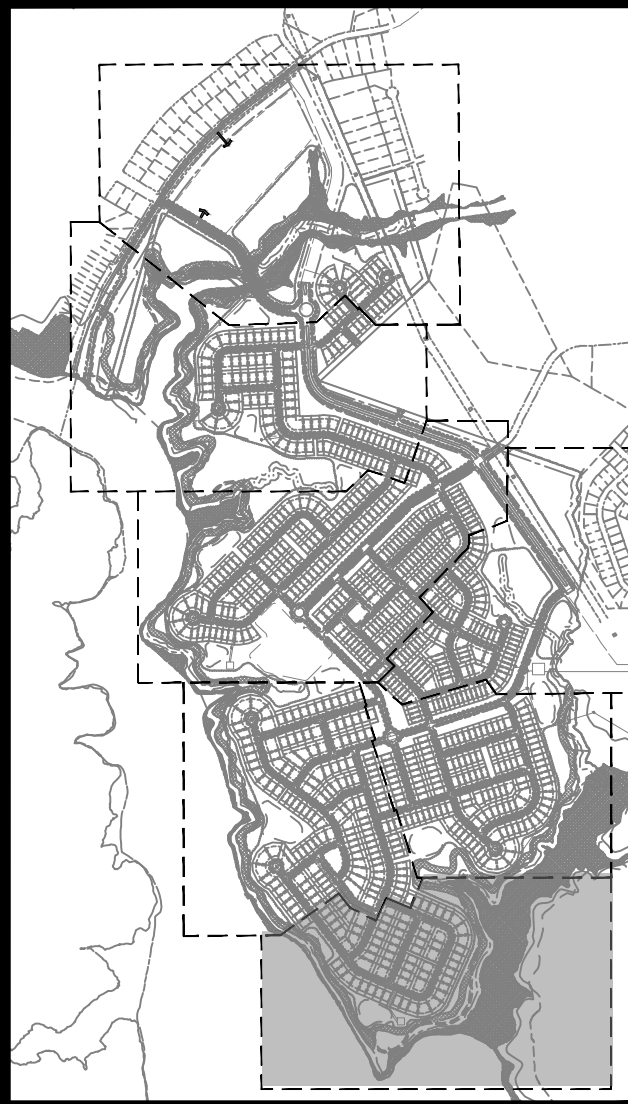
SOUTH FORK SITE

CITY OF BELMONT, NORTH CAROLINA

PULTE GROUP, INC.

PROJECT INFORMATION

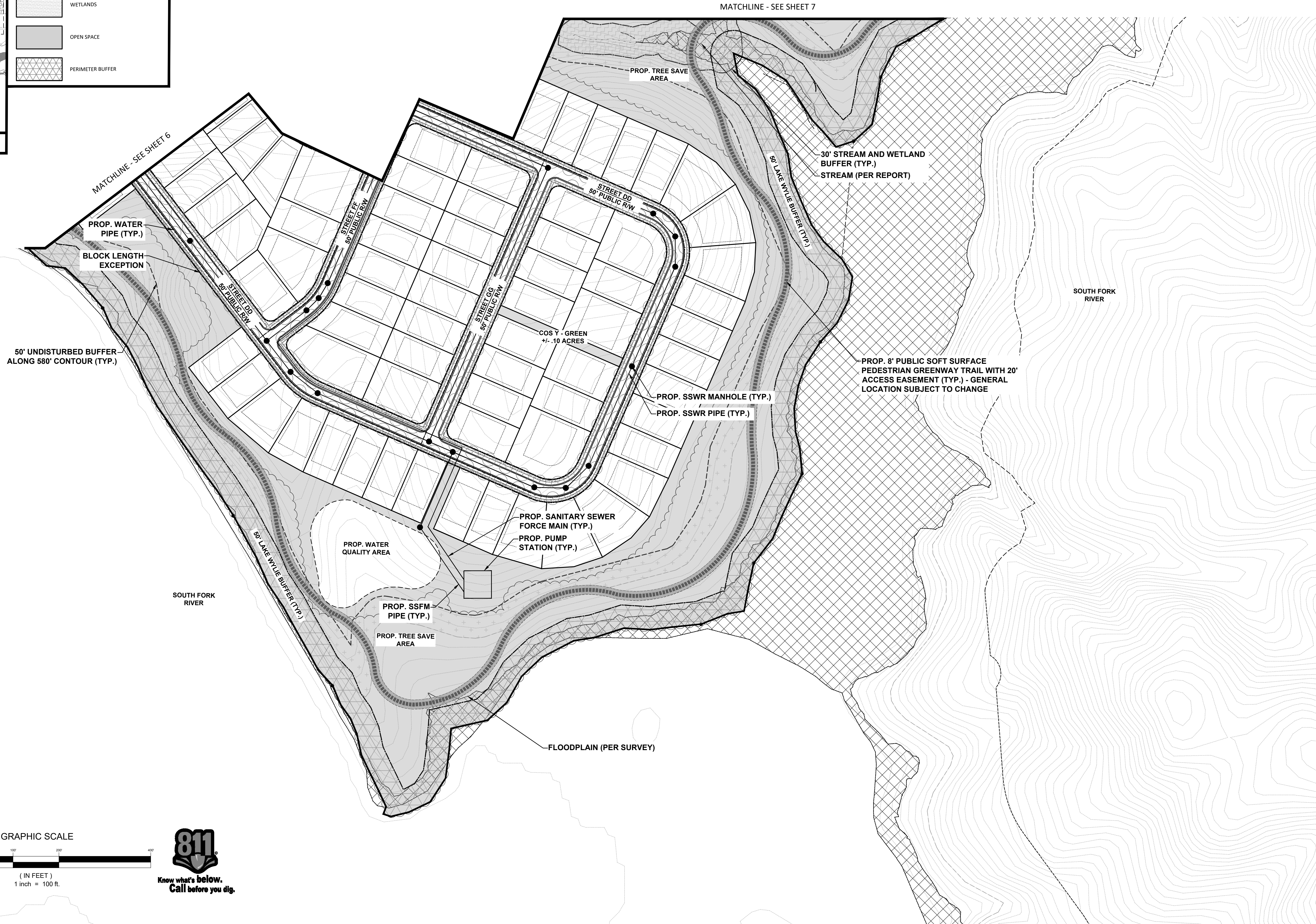
PROJECT MANAGER:	MM
DESIGNED BY:	AB
DRAWN BY:	SW
PROJECT NUMBER:	HN28.100
ORIGINAL DATE:	06/05/2020



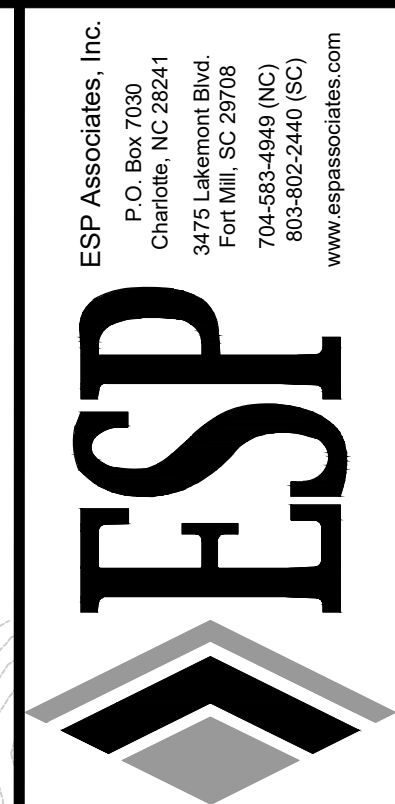
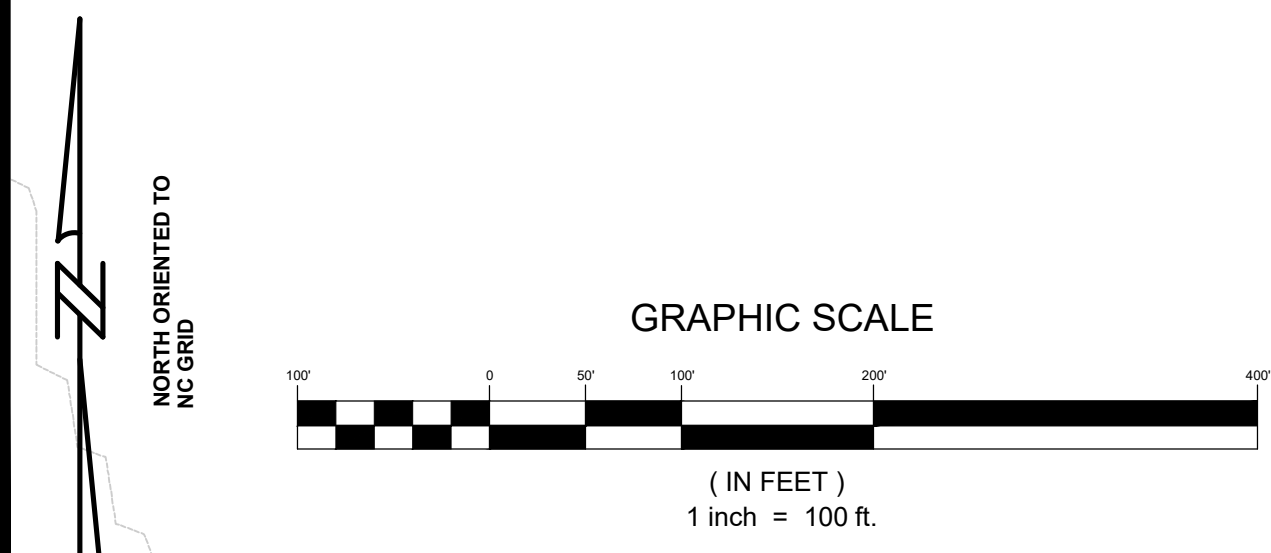
KEY MAP

LEGEND:

- 50' BUFFER ALONG 580' CONTOUR
- 100 YEAR FLOODPLAIN
- 30' STREAM & WETLAND BUFFER
- WETLANDS
- OPEN SPACE
- PERIMETER BUFFER



U:\2019 Projects (M\H\N28 - South Fork Site (Pulse)\Submittal Working Drawings\2021-02-12_12_18_Schematic Plan\Submittal\DWG\N28-SHEETS.dwg, SHEET 8, mwh



ESP Associates, Inc.
P.O. Box 7030
Charlotte, NC 28241
3475 Lakemont Blvd.
Fort Mill, SC 29708
704-583-0440 (NC)
803-502-2440 (SC)
www.espassociates.com

NO.	DATE	REVISION	BY
1	11.23.2020	REVISED PER STAFF COMMENTS	SW
2	01.20.2021	REVISED PER STAFF COMMENTS	SW
3	02.12.2021	REVISED PER STAFF COMMENTS	SW

PROJECT INFORMATION

PROJECT MANAGER: MM

DESIGNED BY: AB

DRAWN BY: SW

PROJECT NUMBER: HN28.100

ORIGINAL DATE: 06/05/2020

SHEET: **8 of 10**

SOUTH FORK SITE
CITY OF BELMONT, NORTH CAROLINA
PULTE GROUP, INC.



ARCHITECTURAL NOTES:
1. EXAMPLE ELEVATIONS AND CONCEPTUAL ARCHITECTURAL RENDERINGS ARE FOR ILLUSTRATIVE PURPOSES ONLY AND ARE SUBJECT TO CHANGE

ESP Associates, Inc.
 P.O. Box 7003
 Charlotte, NC 28241
 3475 Lakemont Blvd.
 Fort Mill, SC 29708
 704-583-0449 (NC)
 803-502-2440 (SC)
 www.espassociates.com



NO.	DATE	REVISION	BY
1	11.23.2020	REVISED PER STAFF COMMENTS	SW
2	01.20.2021	REVISED PER STAFF COMMENTS	SW
3	02.12.2021	REVISED PER STAFF COMMENTS	SW

SCHEMATIC PLAN - ELEVATIONS
 (SHEET 9 OF 10)

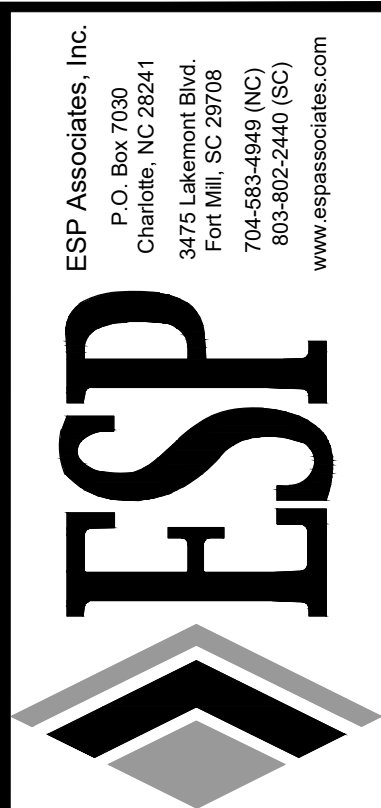
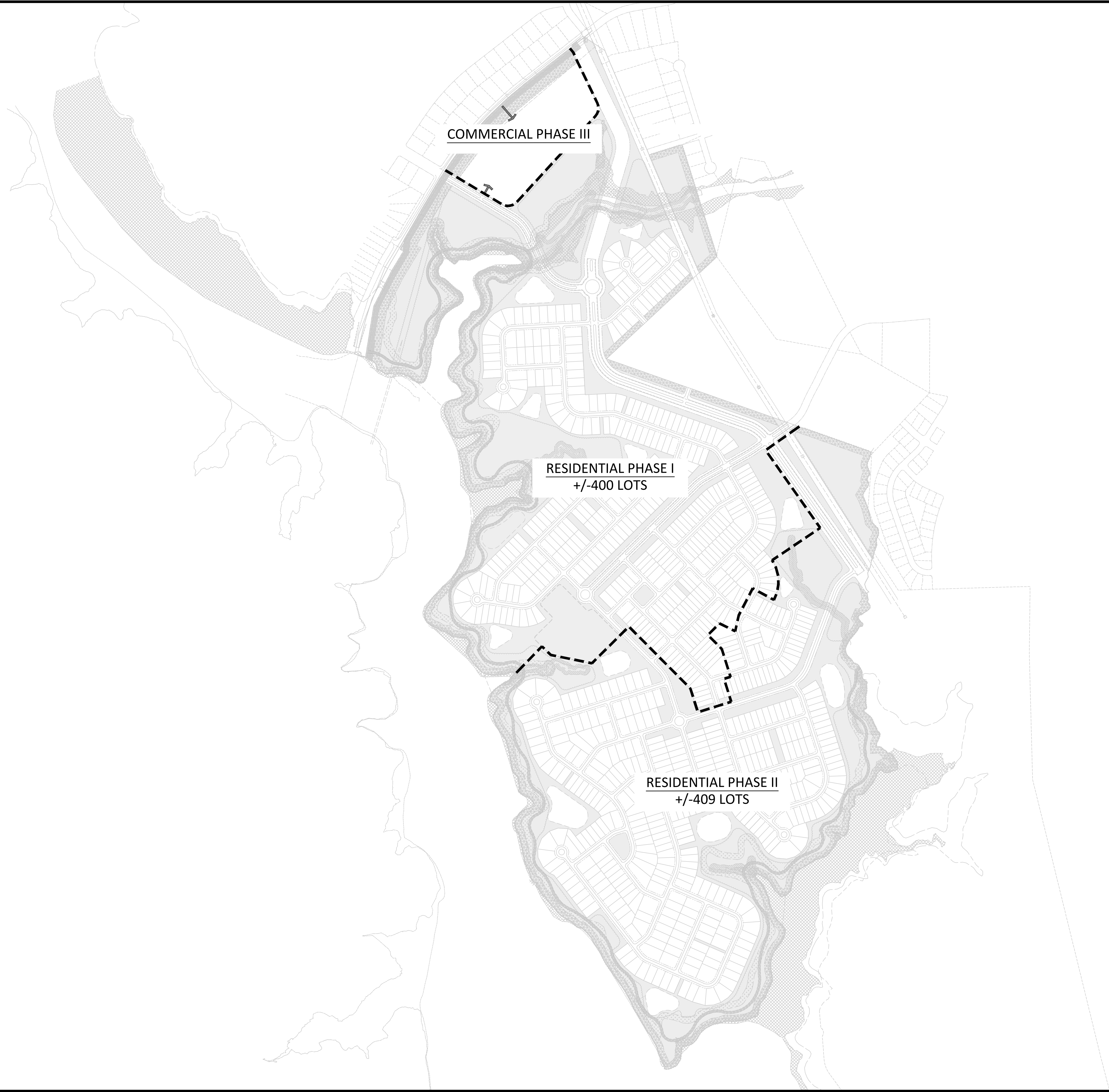
SOUTH FORK SITE

CITY OF BELMONT, NORTH CAROLINA
 PULTE GROUP, INC.

PROJECT INFORMATION	
PROJECT MANAGER:	MM
DESIGNED BY:	AB
DRAWN BY:	SW
PROJECT NUMBER:	HN28.100
ORIGINAL DATE:	06/05/2020

SHEET:
9 OF 10

U:\2019 Projects (M\HN28 - South Fork Site (Pulte))\Submittal Working Drawings\2021-02-12_12_4th Schematic Plan Submittal\DWG\NS-SHEETS.dwg, PHASING, awhite



ESP Associates, Inc.
 P.O. Box 7003
 Charlotte, NC 28241
 3475 Lakemont Blvd.
 Fort Mill, SC 29708
 704-583-0449 (NC)
 803-502-2440 (SC)
 www.espassociates.com

NO.	DATE	REVISION	BY	
			SW	SW
1	11.23.2020	REVISED PER STAFF COMMENTS	SW	
2	01.20.2021	REVISED PER STAFF COMMENTS	SW	
3	02.12.2021	REVISED PER STAFF COMMENTS	SW	

**SCHEMATIC PLAN - PHASING PLAN
 (SHEET 10 OF 10)**

SOUTH FORK SITE
 CITY OF BELMONT, NORTH CAROLINA
 PULTE GROUP, INC.

PROJECT INFORMATION	
PROJECT MANAGER:	MM
DESIGNED BY:	AB
DRAWN BY:	SW
PROJECT NUMBER:	HN28.100
ORIGINAL DATE:	06/05/2020