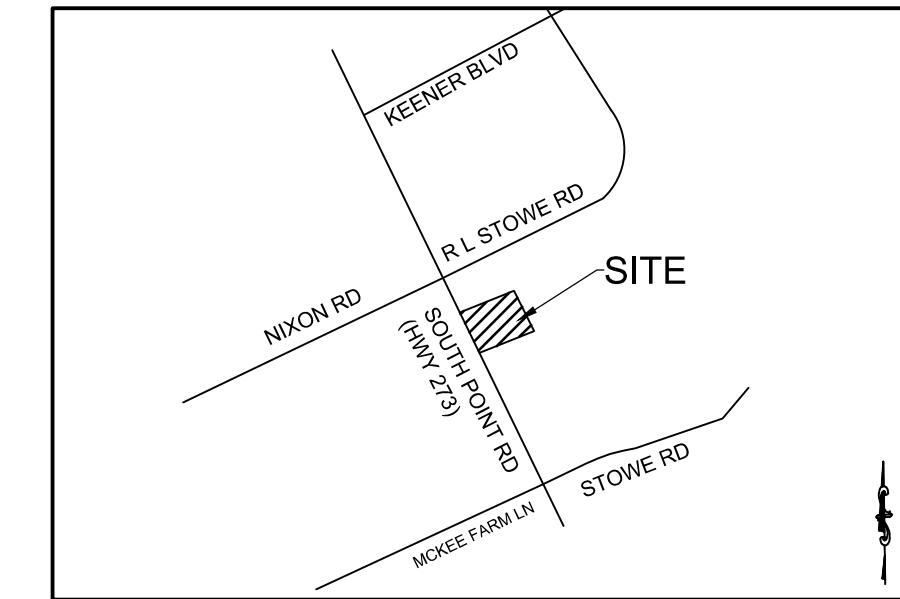


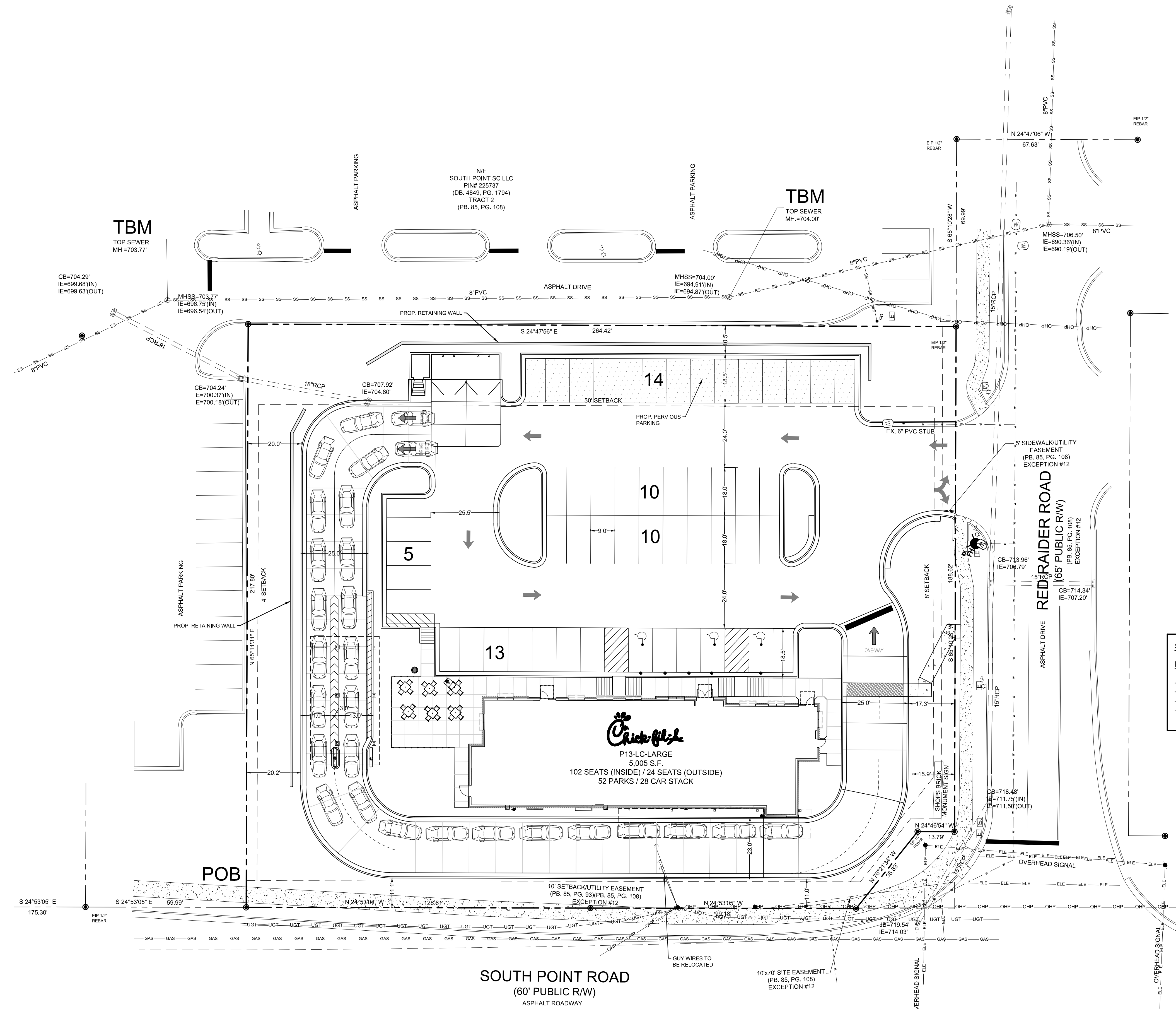


Chick-fil-e

5200 Buffington Rd.
Atlanta Georgia,
30349-2998



LOCATION MAP
SCALE: N.T.S.



SITE DATA:

TOTAL SITE AREA:	1.304 ACRES
BUILDING AREA:	5,005 S.F.
PROP. IMPERVIOUS AREA:	0.89 ACRES
PROP. IMPERVIOUS COVERAGE:	68%
PROP. OPEN SPACE:	32%
DISTURBED AREA:	1.3 ACRES

PARKING DATA:

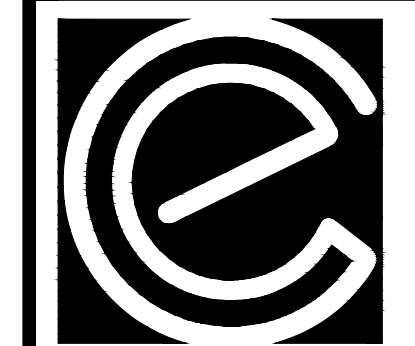
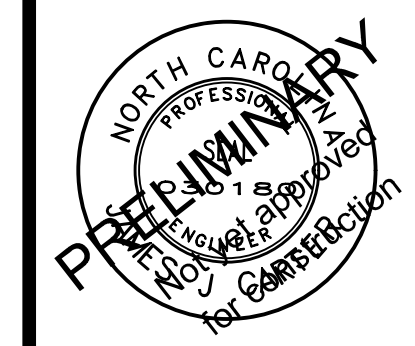
PARKING SPACE REQUIRED:
- ONE (1) SPACE PER FOUR (4) SEATS
136 SEATS / 4 X 1 = 28 = 34 SPACES MIN REQUIRED
(34 X 1.25 = 42.5 MAX REQUIRED)

PARKING SPACES PROVIDED:
52 SPACES
(49 regular spaces provided)
(3 handicap spaces provided)

SITE REQUIREMENTS:

MIN. PARKING LOT DIMENSIONS:	ALLOWED/REQUIRED	PROVIDED
- 90 DEGREE PARKING (LXW)	9X18	9X18/18.5
- 60 DEGREE PARKING (LXW)	9X18	9X18
- ONE-WAY AISLE WIDTH (90°)	22' MIN.	22'
- TWO-WAY AISLE WIDTH (90°)	24' MIN.	24'

REVISION BLOCK	DATE	REASON
REV #	DATE	REASON
A		INITIAL REVIEW



CARTER
ENGINEERING
CONSULTANTS

Carter Engineering Consultants, Inc.
3651 Mars Hill Road, Suite 2000
Waukesha, WI 53097
P: 770.725.1200
F: 770.725.1204
www.carterengineering.net

STORE # 04719

SOUTH POINT RD.
BELMONT NC 28012

SHEET TITLE

SITE PLAN

REVISION 1-2020

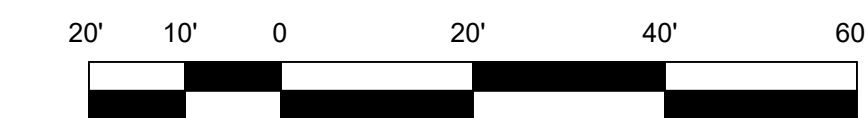
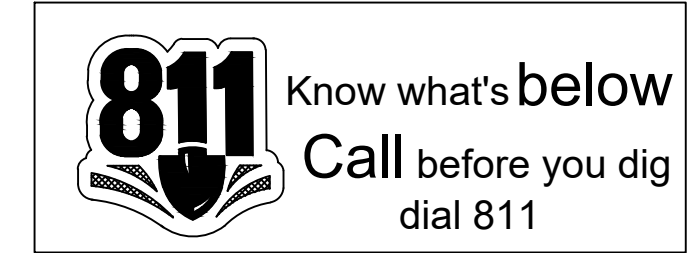
Job No. : 19018CFA

Store : 04719

Date : 03/16/20

Sheet

C-2.0



GRAPHIC SCALE
SCALE 1" = 20'