

DESIGN DEVELOPMENT PACKAGE  
**South Point Township**

South Point Road , Belmont , NC 28012

STORE NUMBER

**04719**



PROTOTYPE	<b>P13_LC</b>
VERSION	Approver
TIER	TIER 1
BUILDING FOOTPRINT	4947 SF
SEAT COUNT - INTERIOR	138
SEAT COUNT - EXTERIOR	24
SEATING TYPE	STANDARD
REGISTERS	4
DRIVE-THRU	YES
LEED	NOT CERTIFIED
LANDSCAPING	STANDARD
<u>OPTIONS:</u>	
RESTROOM	THREE FIXTURE
WATER FILTRATION	TYPE 1
PLAYGROUND	NO PLAY
KITCHEN LAYOUT	CENTERLINE

**DESIGN SIGN-OFF**

DESIGN LEADER \_\_\_\_\_

DATE \_\_\_\_\_

PERSPECTIVE VIEW - ENTRY

DESIGN DEVELOPMENT COVER SHEET

04719, South Point Township, South Point Road, Belmont, NC 28012

11/05/2020



THE CHICK-FIL-A DESIGN DEVELOPMENT PACKAGE REPRESENTS A BRAND COMPLIANT DESIGN SOLUTION. SITE ADAPT PROFESSIONALS ARE RESPONSIBLE FOR APPLICATION OF DESIGN AND COMPLIANCE WITH ORDINANCES AND CODES.

11/5/2020 4:41:13 PM  
D-010





PERSPECTIVE VIEW - REAR RIGHT

## EXECUTIVE SUMMARY

EXTERIOR MODIFICATIONS  
DUAL LANE OMD. BR-A TO MATCH LL BRICK SPEC.

INTERIOR MODIFICATIONS  
NONE

FRONT OF HOUSE MODIFICATIONS  
NONE

BACK OF HOUSE MODIFICATIONS  
NONE



PERSPECTIVE VIEW - FRONT LEFT



PERSPECTIVE VIEW - REAR LEFT

## PERSPECTIVE VIEWS

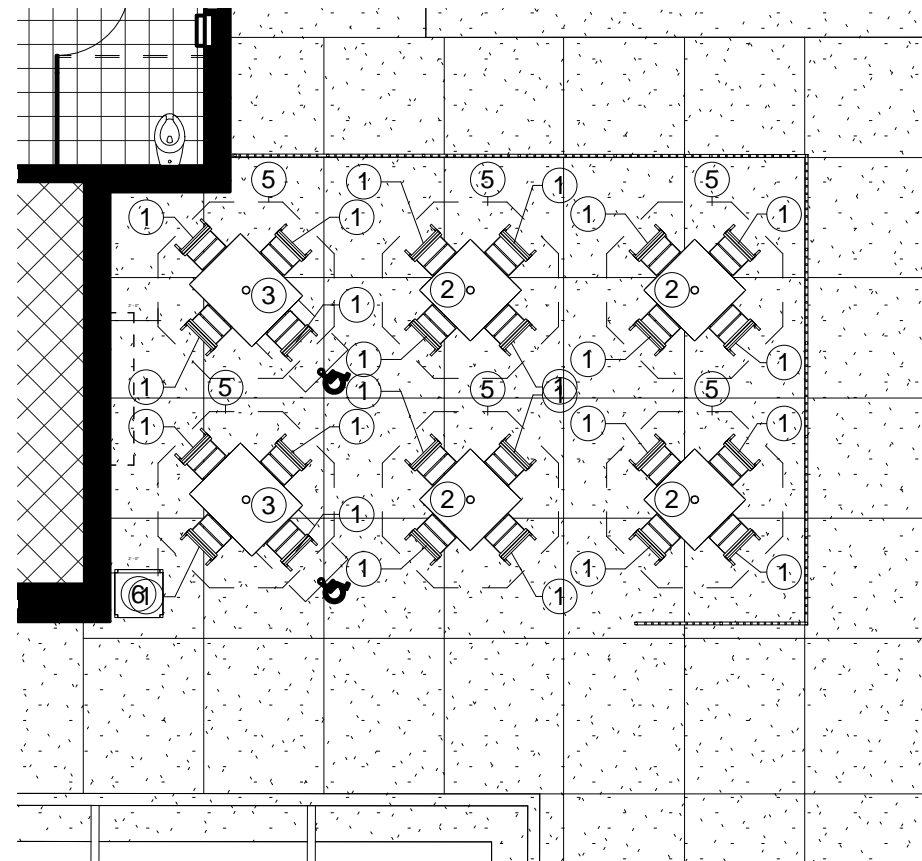


## PATIO SEATING SCHEDULE

Mark	Type	Count	Manufacturer	Model	Width	Depth	Height	Material	Finish
1	Patio Chair	24	Benchmark Design Group	BAJA SIDE STACK (2012)					
2	Patio Table - 4 Top	4	Benchmark Design Group	TAB3055-3636-AAL-WJ-UH-BDT	3'-0"	3'-0"	2'-5 1/4"	Aluminim - Dark Bronze	RAL 49/66220 (C34 Bronze One Coat)
3	Patio Table - 4 Top - ADA	2	Benchmark Design Group	TAB3055-3644-AAL-WJ-UH-BDT	3'-8"	3'-0"	2'-5 1/4"	Aluminim - Dark Bronze	RAL 49/66220 (C34 Bronze One Coat)
5	Patio Umbrella	6	Tuuci	OCEAN MASTER PARASOL					
6	Trash Receptacle	1	Benchmark Design Group	CFA-AL-2444	2'-0"	2'-0"	3'-11"	Dark Bronze	RAL 49/66220 (C34 Bronze One Coat)



PERSPECTIVE VIEW - PATIO



DINING PATIO PLAN

1/8" = 1'-0"

PATIO PLAN

04719, South Point Township, South Point Road, Belmont, NC 28012

THE CHICK-FIL-A DESIGN DEVELOPMENT PACKAGE REPRESENTS A BRAND COMPLIANT DESIGN SOLUTION. SITE ADAPT PROFESSIONALS ARE RESPONSIBLE FOR APPLICATION OF DESIGN AND COMPLIANCE WITH ORDINANCES AND CODES.

11/05/2020







EXTERIOR ELEVATION

1" = 10'-0"



EXTERIOR ELEVATION

1" = 10'-0"

EXTERIOR ELEVATIONS





EXTERIOR ELEVATION

1" = 10'-0"



EXTERIOR ELEVATION

1" = 10'-0"

EXTERIOR ELEVATIONS

ATTACHED CANOPY SCHEDULE						
Mark	Description	Count	Overall Width	Overall Depth	Tie Back Mounting (Offset From Top)	Integral Lighting
C1-A	Exterior Canopy	1	3'-8 1/2"	1'-0"	0"	Yes
C1-C	Exterior Canopy	9	6'-4"	1'-0"	0"	No
C1-K	Exterior Canopy	2	6'-4"	1'-0"	0"	Yes
C4-B	Exterior Canopy	1	5'-4"	4'-0"	2'-4"	Yes
C4-L	Exterior Canopy	1	17'-10 1/2"	4'-0"	2'-4"	Yes
Grand total		14				

EXTERIOR FINISHES



**BR-A**  
BRICK VENEER  
COLOR: GENERAL SHALE PHOENIX  
SIZE: MODULAR



**BR-B**  
BRICK VENEER  
COLOR: LIGHT BROWN  
SIZE: MODULAR



**EC-1**  
PREFINISHED METAL COPING  
COLOR: DARK BRONZE



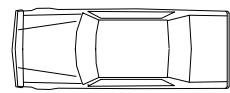
**PT-9**  
EXTERIOR PAINT  
COLOR: DARK BRONZE  
FINISH: SEMI-GLOSS



**ST-1**  
STOREFRONT  
COLOR: DARK BRONZE



# AREA PLAN SYMBOL LEGEND



DRIVE THRU PICK-UP



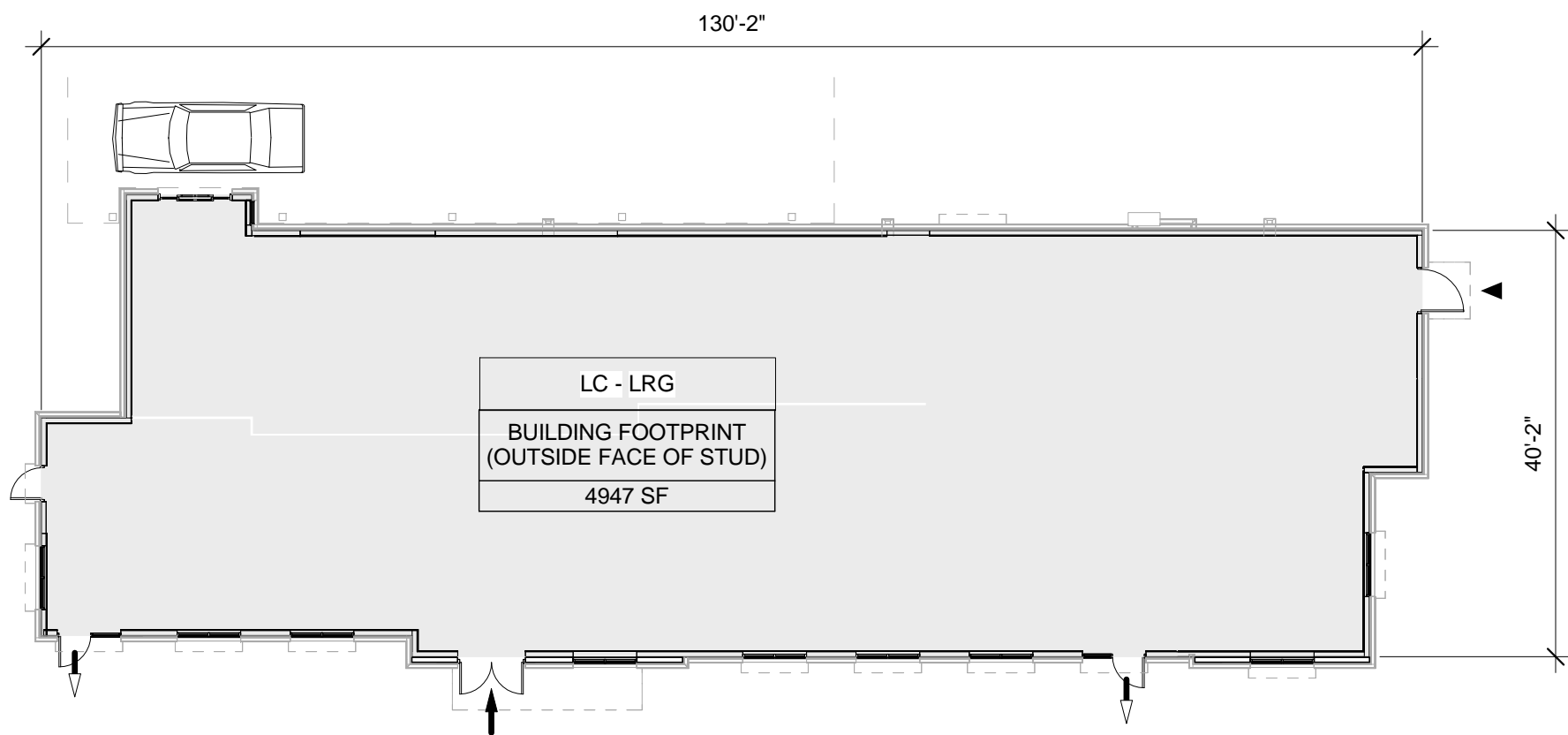
SERVICE ENTRY



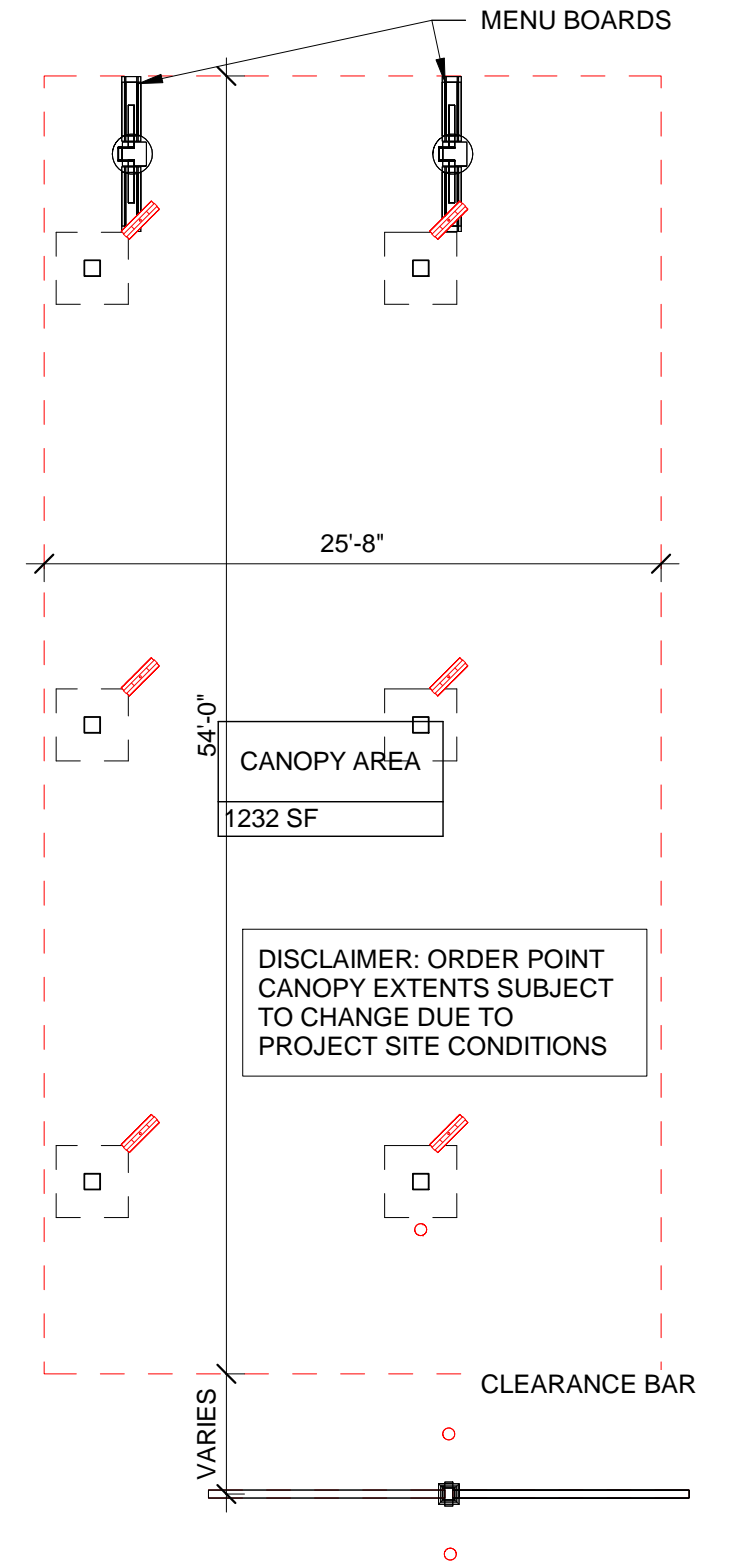
CUSTOMER EGRESS



MAIN ENTRY



AREA PLAN  
1/16" = 1'-0"



OP CANOPY AREA PLAN  
1/8" = 1'-0"

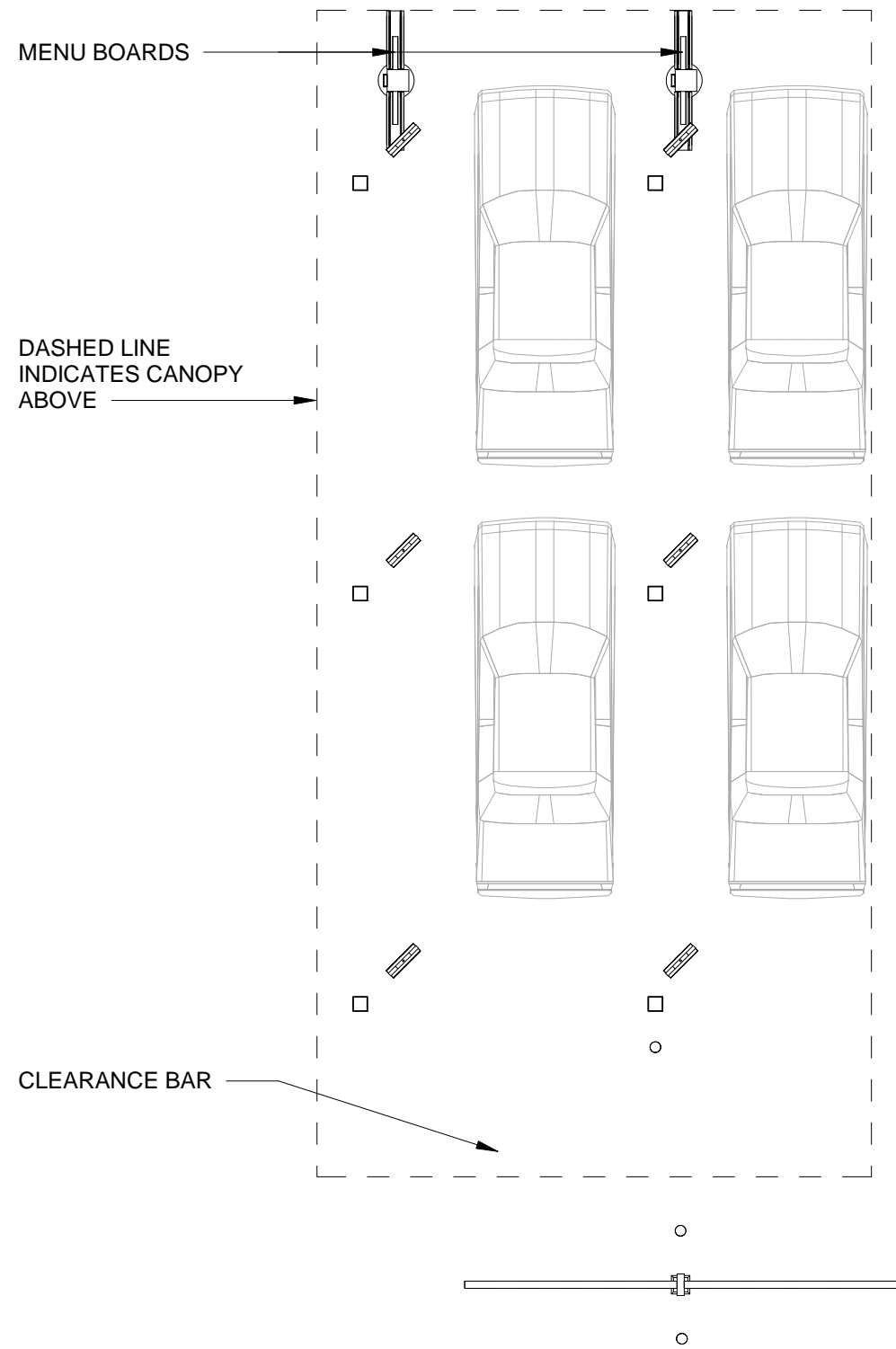
## AREA PLAN

04719, South Point Township, South Point Road, Belmont, NC 28012

11/05/2020

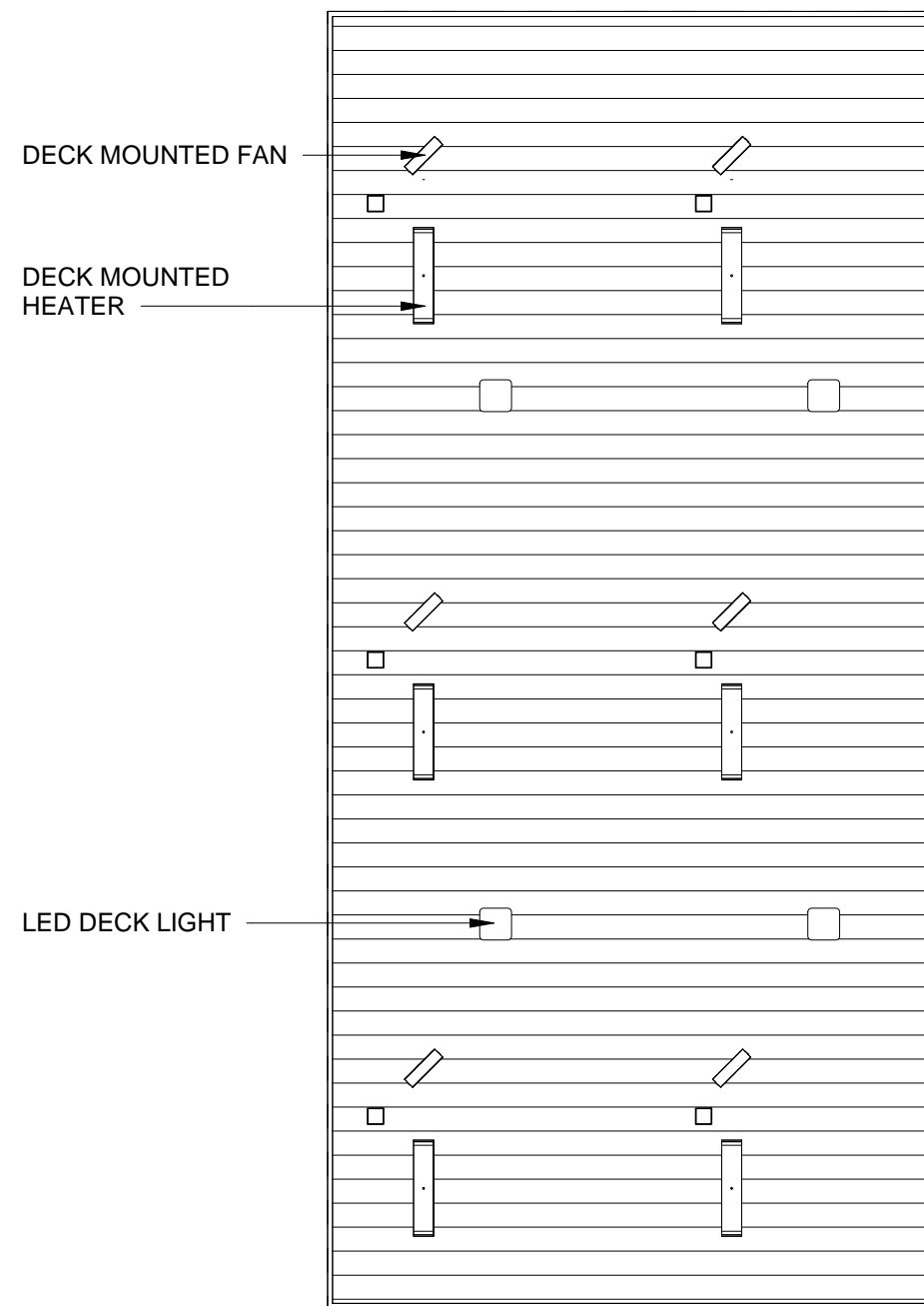
THE CHICK-FIL-A DESIGN DEVELOPMENT PACKAGE REPRESENTS A BRAND COMPLIANT DESIGN SOLUTION. SITE ADAPT PROFESSIONALS ARE RESPONSIBLE FOR APPLICATION OF DESIGN AND COMPLIANCE WITH ORDINANCES AND CODES.





ORDER POINT CANOPY PLAN

1/8" = 1'-0"



ORDER POINT CANOPY REFLECTED CEILING PLAN

1/8" = 1'-0"

ORDER POINT CANOPY PLANS

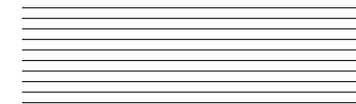


PERSPECTIVE VIEW

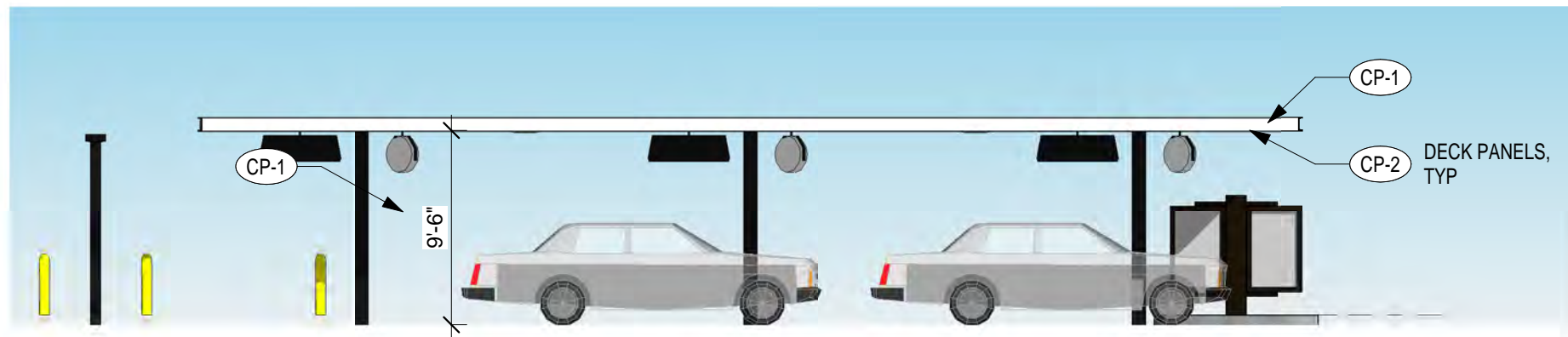
**OP CANOPY FINISHES**



**CP-1**  
 PREFINISHED METAL  
 COLOR: DARK BRONZE

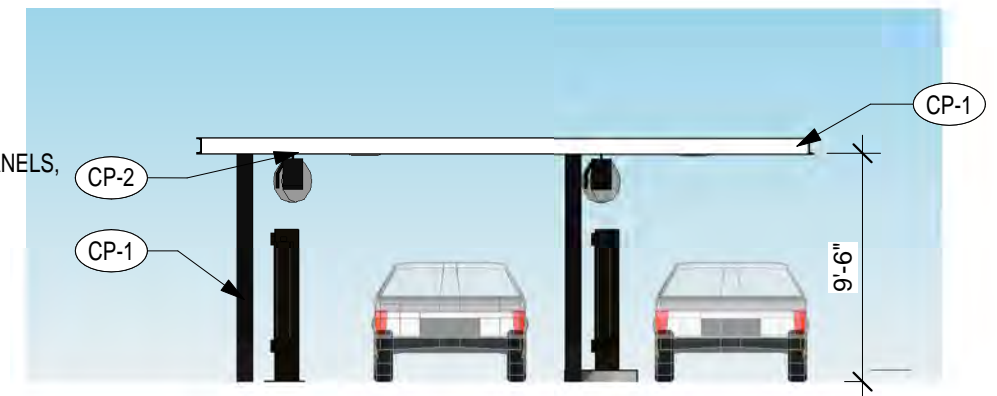


**CP-2**  
 METAL DECKING  
 COLOR: WHITE



SIDE ELEVATION

1/8" = 1'-0"



ENTRY ELEVATION

1/8" = 1'-0"

ORDER POINT CANOPY ELEVATIONS