

# ABBAY CREEK GREENWAY

LOCATED IN  
BELMONT, NORTH CAROLINA

PRELIMINARY  
NOT FOR  
CONSTRUCTION



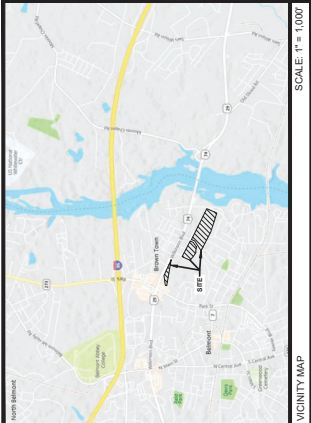
ESP Associates, Inc.  
P.O. Box 7023  
Charlotte, NC 28261  
704.494.6943  
www.espassoc.com

NO.	DATE	REVISION

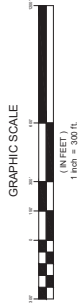
CITY OF BELMONT  
ABBAY CREEK GREENWAY  
COVER SHEET  
BELMONT, NORTH CAROLINA

PROJECT INFORMATION	
PROJECT MANAGER	
DESIGNER	
DRAWN BY	
CHECKED BY	
DATE	
SCALE	
DATE	

C0.0  
SHEET



SHEET NO.	SHEET NAME	ORIGINAL DATE	REVISED DATE
C0.0	COVER SHEET	3-12-2021	
C0.1	GRADING PLAN ENLARGEMENT (SHEET 1 OF 3)	3-12-2021	
C0.2	GRADING PLAN ENLARGEMENT (SHEET 2 OF 3)	3-12-2021	
C0.3	GRADING PLAN ENLARGEMENT (SHEET 3 OF 3)	3-12-2021	
C0.4	GREENWAY PROFILES (SHEET 1 OF 2)	3-12-2021	
C0.5	GREENWAY PROFILES (SHEET 2 OF 2)	3-12-2021	
C0.6	SEGMENT 1 CROSS SECTIONS (SHEET 1 OF 3)	3-12-2021	
C0.7	SEGMENT 1 CROSS SECTIONS (SHEET 2 OF 3)	3-12-2021	
C0.8	SEGMENT 1 CROSS SECTIONS (SHEET 3 OF 3)	3-12-2021	
C0.9	TRAILHEAD LAYOUT PLAN	3-12-2021	



THIS SET IS CURRENT THROUGH SHEET DATE 3-12-2021

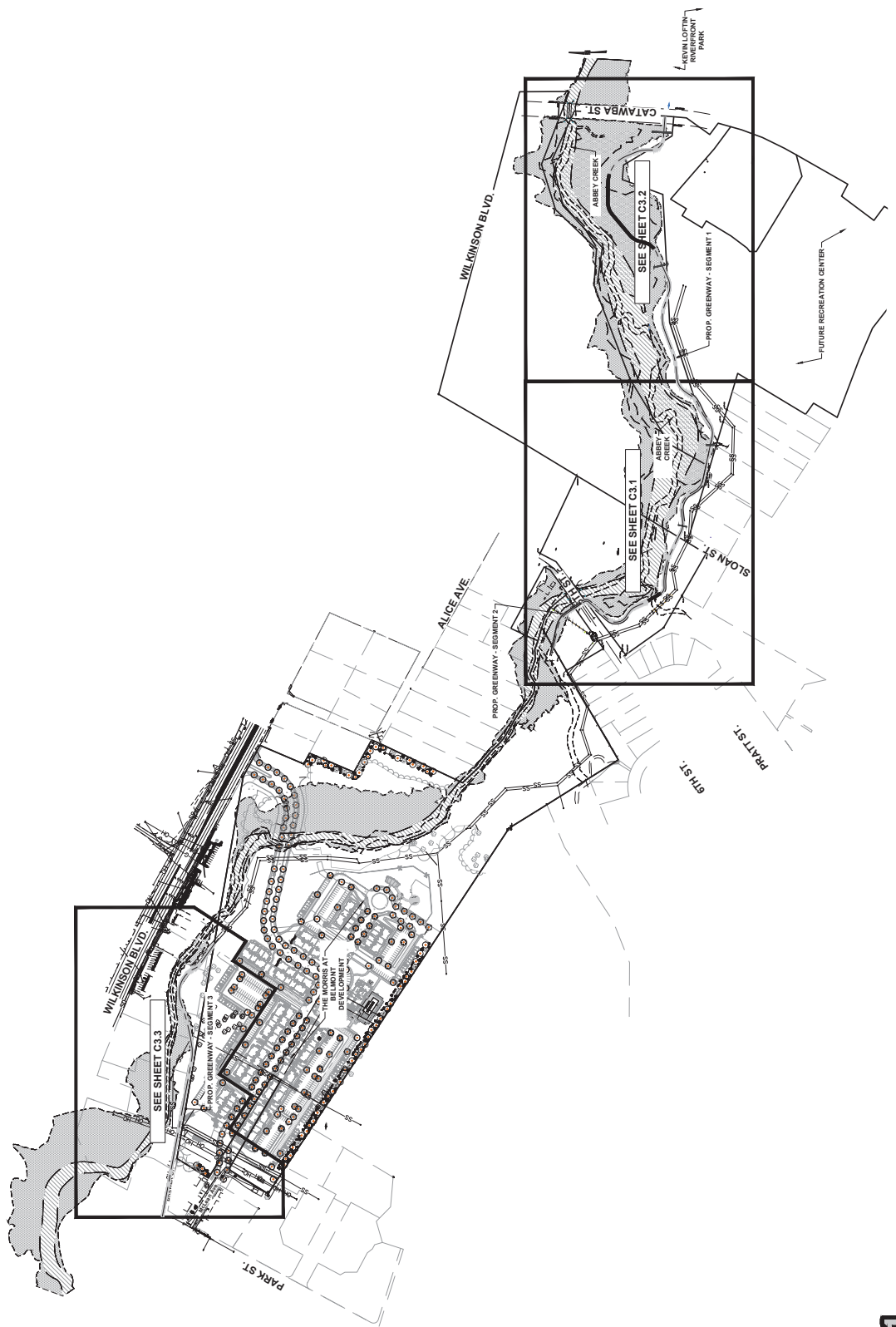
**ENGINEERING FIRM:**  
ESP ASSOCIATES, INC.  
3675 LAKEMONT BLVD.  
FORT MILL, SC 29708  
PHONE: (803) 540-2319  
FAX: (803) 540-2319  
CONTACT: JOHN SCOTT CHILDERS, P.E.

**DEVELOPER:**  
CITY OF BELMONT  
BELMONT, NORTH CAROLINA 28012  
PHONE: (704) 839-4010  
CONTACT: DEBRAH FARNO, CZO  
ADDRESS: 57 N MAIN STREET  
ADDRESS: BELMONT, NORTH CAROLINA 28012  
PHONE: (704) 351-6170

**REVIEW AGENCY:**  
SUSTAINABLE PLANNING & ENVIRONMENTAL RESOURCES  
2000 RICHMOND AVENUE, SUITE 200  
DALLAS, NORTH CAROLINA 28034  
PHONE: (704) 322-2157

NO.	DATE	REVISION

PROJECT INFORMATION	
PROJECT MANAGER	AF
DESIGNER	CL
DRAWN BY	CL
CHECKED BY	AF
ISSUE DATE	11/13/2013
SHEET	<b>C0.1</b>



**GRAPHIC SCALE**  
 1" = 200' (IN SHEET)  
 1 inch = 200 ft.

NORTH ORIENTED TO  
 (NO GRD INADES)

GRADING PLAN ENLARGEMENT  
(SHEET 1 OF 3)  
ABBEE CREEK GREENWAY  
CITY OF BELMONT  
BELMONT, NORTH CAROLINA

PRELIMINARY  
NOT FOR  
CONSTRUCTION



ESP Associates, Inc.  
P.O. Box 70309  
Charlotte, NC 28241  
3475 Lamberth Blvd.  
Suite 100, NC 28104  
704.434.8464 (NC)  
803.532.2443 (SC)  
www.espnc.com

PRODUCT INFORMATION

PROJECT MANAGER	DATE

DESIGNED BY

DATE

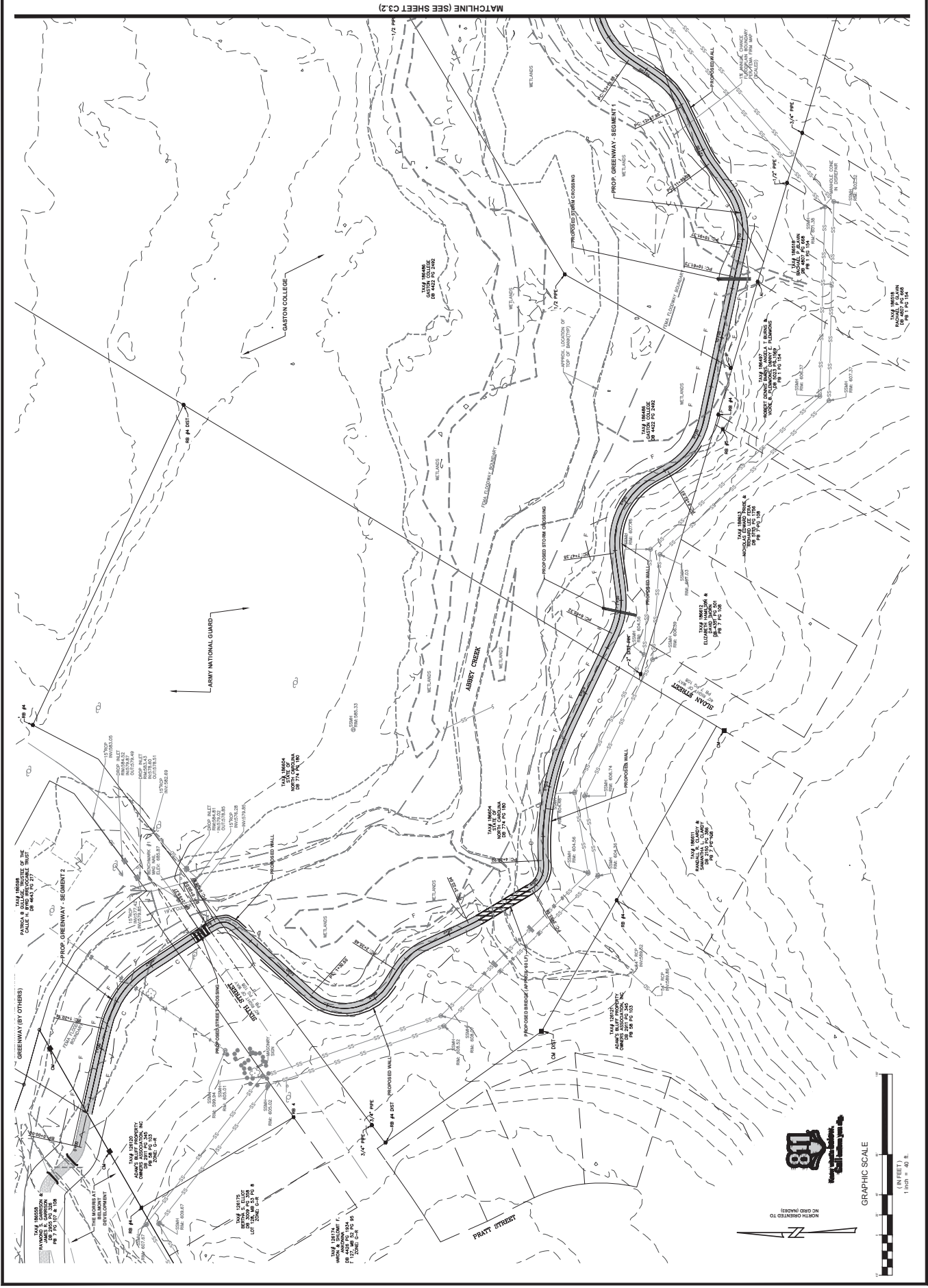
DRAWN BY

DATE

CHECKED BY

DATE

APPROVED DATE: 3.3.2021



11/2020 PlanSet (7/17/21) - Abbee Creek Greenway (City of Belmont) (2/23/2020) GREENWAY PLAN ENLARGEMENT (SHEET 1 OF 3). gwpm3

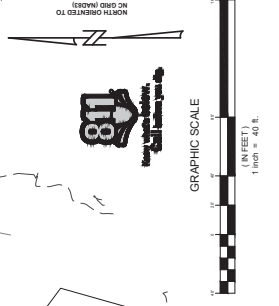
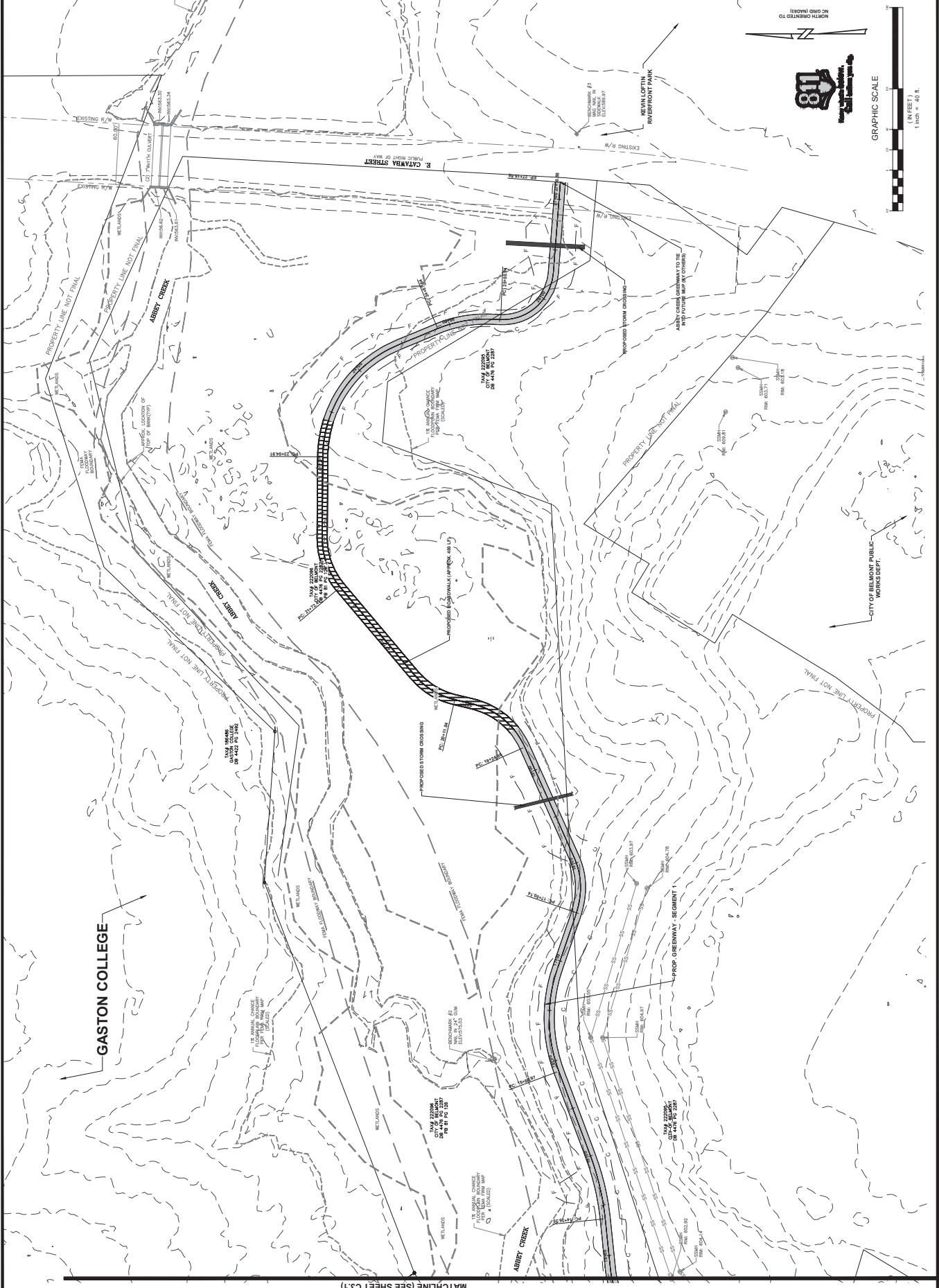
PROJECT NUMBER	AR
DESIGNED BY	CL
DRAWN BY	CL
CHECKED BY	CL
DATE	3-2-2011
SHEET	

CITY OF BELMONT  
 ABBEY CREEK GREENWAY  
 (SHEET 2 OF 3)  
 GRADING PLAN ENLARGEMENT  
 BELMONT, NORTH CAROLINA

PRELIMINARY  
 NOT FOR  
 CONSTRUCTION



ESP Associates, Inc.  
 P.O. Box 7030  
 Columbia, NC 28041  
 704-444-0404 (NC)  
 704-444-0403 (SC)  
 803-452-2443 (SC)  
 www.espace.com



MATCHLINE (SEE SHEET C3.1)



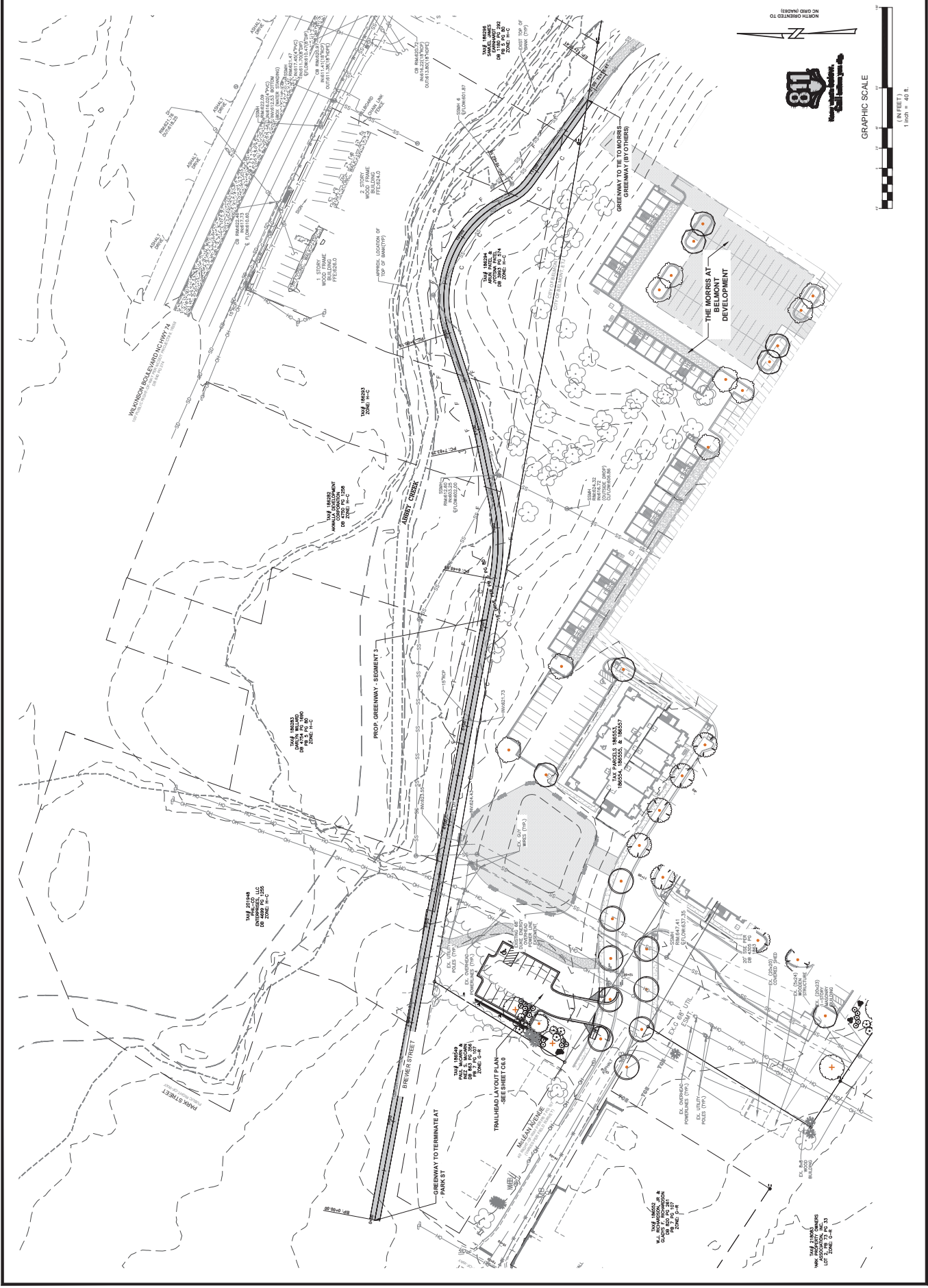
PROJECT NUMBER	AR
DESIGNED BY	CL
DRAWN BY	CL
CHECKED BY	CL
DATE	3.2.2021
SHEET	

CITY OF BELMONT  
 ABBEY CREEK GREENWAY  
 GRADING PLAN ENLARGEMENT  
 (SHEET 3 OF 3)

PRELIMINARY  
 NOT FOR  
 CONSTRUCTION



ESP Associates, Inc.  
 P.O. Box 7030  
 Charlotte, NC 28261  
 704.434.4444 (NC)  
 803.452.4444 (SC)  
 www.espaceinc.com

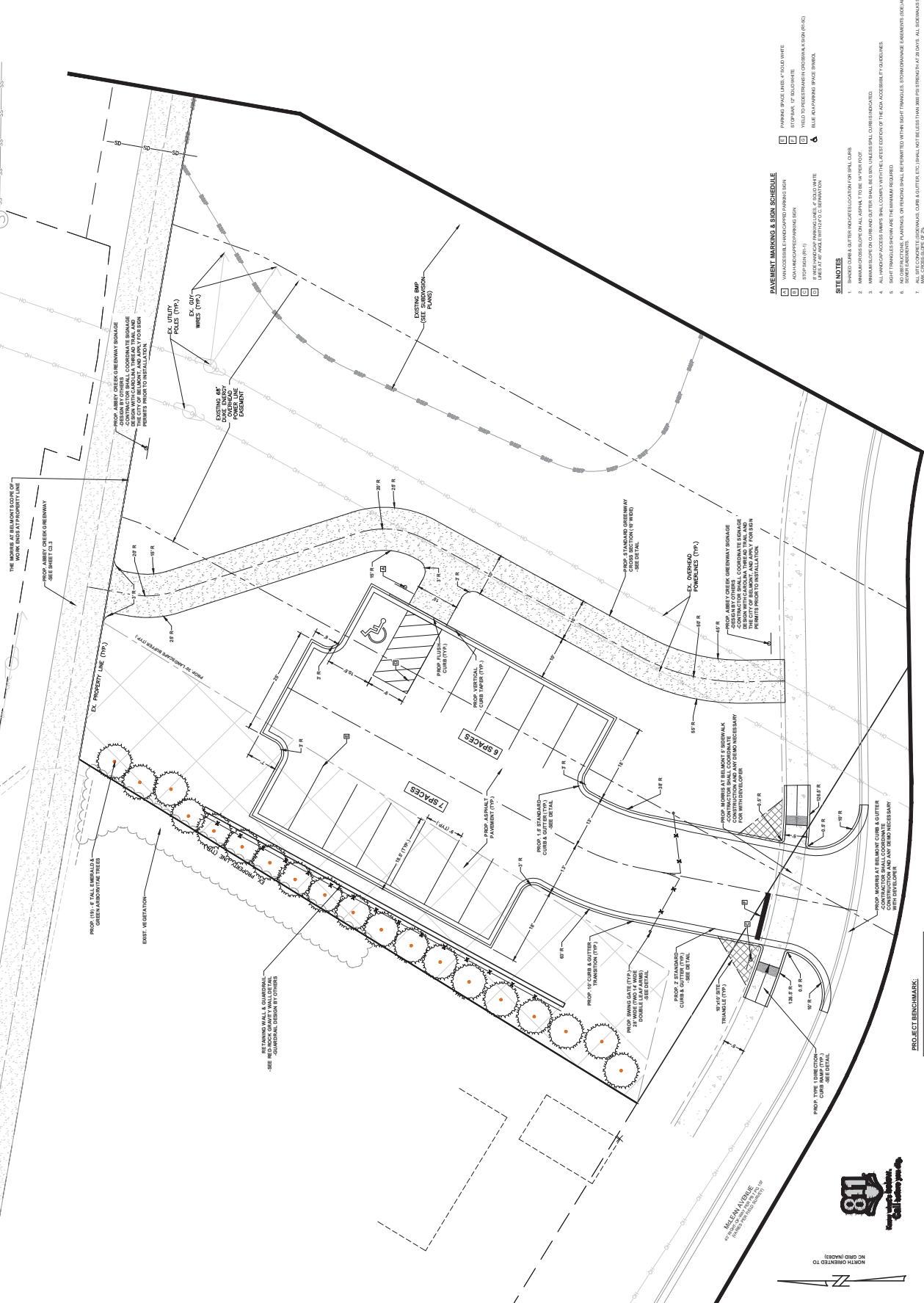


GRAPHIC SCALE  
 1 inch = 40 ft.  
 (IN FEET)



NO. 1800 INCHES  
 NORTH ORIENTED TO

NO.	DATE	REVISION



PARKING SPACE LINES AT SOLID WHITE STOP BAR, 12" DEDUCTIVE YIELD TO PEDESTRIAN (SHOW PARKING PLAN) BLUE ADVANCE SPACE SYMBOL

UNACCESSIBLE UNIMPROVED PARKING SIGN ADVANCE UNIMPROVED PARKING SIGN STOP SIGN (R-1) MAXIMUM SPEED LIMIT SIGN (R-2) MAXIMUM WEIGHT LIMIT SIGN (R-3) MOUNTED STOP SIGN

**PAVEMENT MARKING & SIGN SCHEDULE**

1. UNACCESSIBLE UNIMPROVED PARKING SIGN

2. ADVANCE UNIMPROVED PARKING SIGN

3. STOP SIGN (R-1)

4. MAXIMUM SPEED LIMIT SIGN (R-2)

5. MAXIMUM WEIGHT LIMIT SIGN (R-3)

6. MOUNTED STOP SIGN

**SITE NOTES**

- SHADE/COOL GUTTER IDENTIFICATION FOR WELLS
- MINIMUM CURVE RADIUS AT ALL POINTS TO BE 14' TYPICAL
- MINIMUM CURVE RADIUS AND OFFSETS SHALL BE PER INTERSECTION CURVE (PROVIDED)
- ALL CURVES SHALL BE FULLY DEVELOPED AT ALL POINTS
- NO OBSTRUCTION, PLANTINGS OR TREES SHALL BE PERMITTED WITHIN THE RIGHT OF WAY TO IMPAIR THE TRAIL, TO IMPAIR THE VISION OF TRAIL USERS OR TO BE A HAZARD TO TRAIL USERS
- ALL OBSTRUCTION, PLANTINGS, CURBS, OFFSETS, ETC. SHALL NOT BE LESS THAN 18" FROM THE TRAIL CENTERLINE
- ALL DIMENSIONS SHALL MATCH PLANS FOR THE TRAIL AND ALL DIMENSIONS SHALL MATCH PLANS FOR THE TRAIL AND ALL DIMENSIONS SHALL MATCH PLANS FOR THE TRAIL
- ALL DIMENSIONS SHALL MATCH PLANS FOR THE TRAIL AND ALL DIMENSIONS SHALL MATCH PLANS FOR THE TRAIL
- ALL DIMENSIONS SHALL MATCH PLANS FOR THE TRAIL AND ALL DIMENSIONS SHALL MATCH PLANS FOR THE TRAIL
- ALL DIMENSIONS SHALL MATCH PLANS FOR THE TRAIL AND ALL DIMENSIONS SHALL MATCH PLANS FOR THE TRAIL

**PROJECT BENCHMARK:**

811 BELMONT (1500 ± 0.0)

812 BELMONT (1500 ± 0.0)

813 BELMONT (1500 ± 0.0)

814 BELMONT (1500 ± 0.0)

**GRAPHIC SCALE**

1" = 10'

0 10 20 30 40

**811**

**812**

**813**

**814**

**MAP OF BELMONT**

**ABILEY CREEK GREENWAY**

**TRAILHEAD**

**NO. 010**

**1500 ± 0.0**

**1500 ± 0.0**

**1500 ± 0.0**

**NO. 010**

**1500 ± 0.0**

**1500 ± 0.0**

**1500 ± 0.0**

**NO. 010**

**1500 ± 0.0**

**1500 ± 0.0**

**1500 ± 0.0**

**NO. 010**

**1500 ± 0.0**

**1500 ± 0.0**

**1500 ± 0.0**