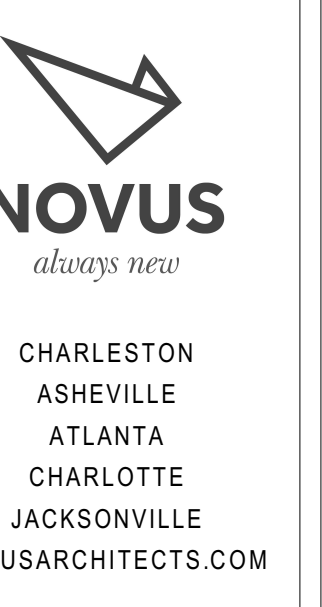


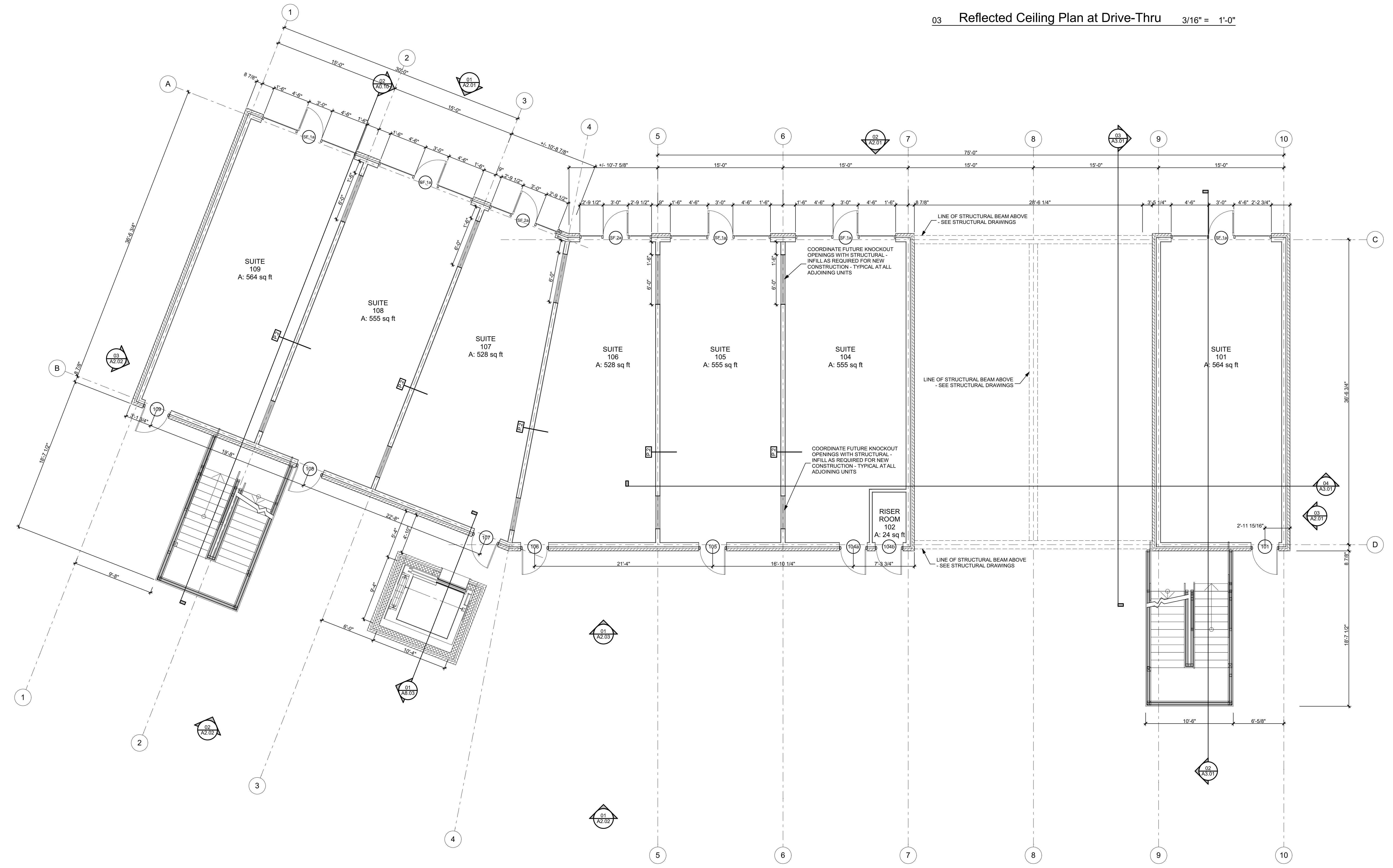
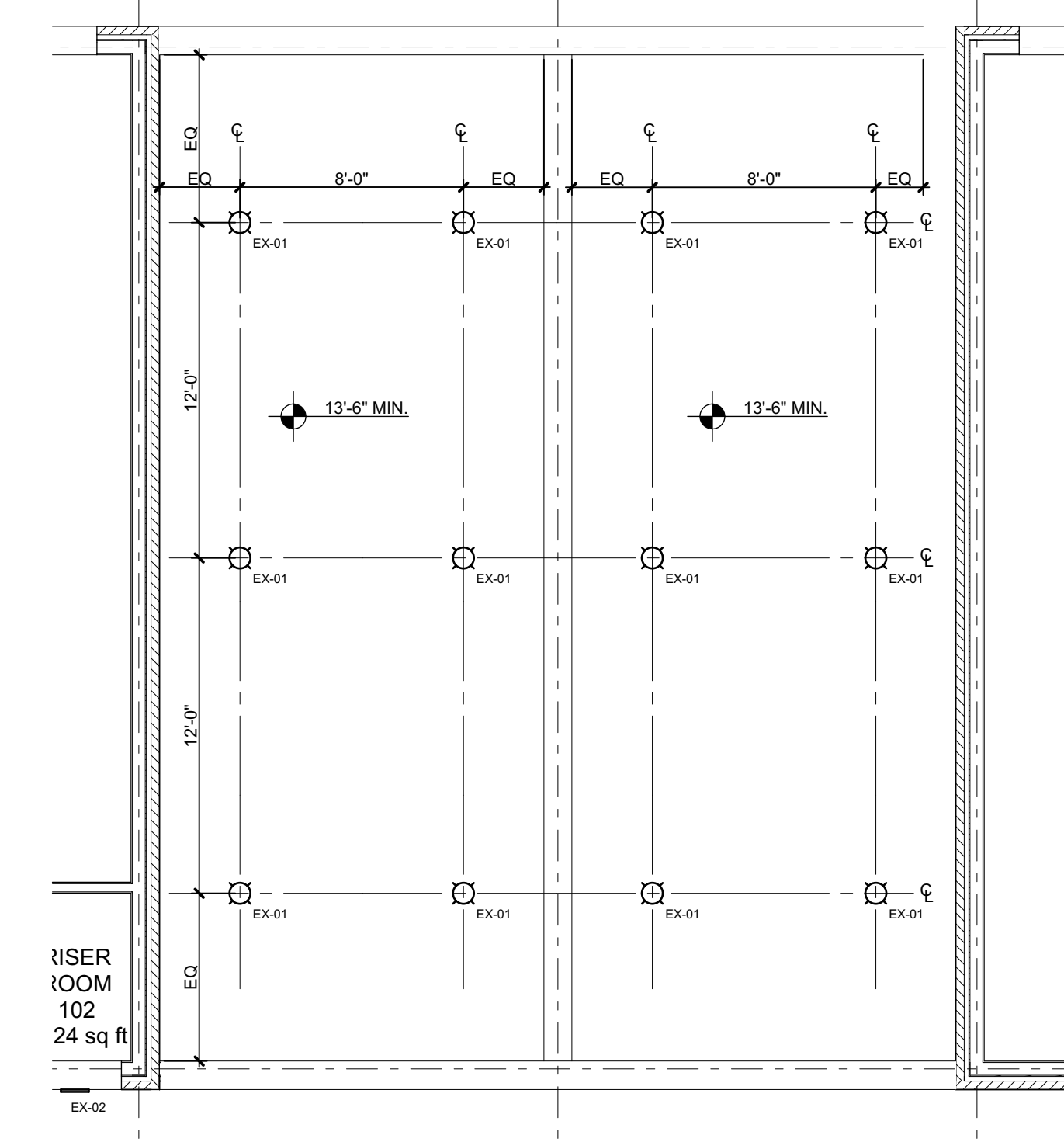
ALL DESIGNS, DRAWINGS, AND SPECIFICATIONS DEPICTED ON THIS SHEET ARE PROPERTY OF NOVUS ARCHITECTS INC. COPYRIGHT © 2020 ANY UNAUTHORIZED USE OR REPRODUCTION IS SUBJECT TO LEGAL PROSECUTION. POSSESSION IN ANY FORM CONSTITUTES ACCEPTANCE OF THESE CONDITIONS



CHARLESTON
ASHEVILLE
ATLANTA
CHARLOTTE
JACKSONVILLE
NOVUSARCHITECTS.COM

1950 Abbott Street
Suite 603
Charlotte, NC 28203
P: (704) 373-3101
www.novusarchitects.com

GENERAL NOTES:
DO NOT SCALE DRAWINGS. IF DIMENSIONS ARE IN QUESTION, OBTAIN CLARIFICATION FROM ARCHITECT.
DIMENSIONS ARE FROM FACE OF STUD TO FACE OF STUD, AND/OR FACE OF MASONRY TO FACE OF MASONRY UNLESS NOTED OTHERWISE. CLEAR DIMENSIONS ARE FROM FINISHED FACE TO FINISHED FACE.
GRID LINES ARE CENTER LINE - C - OF STUD UNLESS NOTED OTHERWISE.
CONTRACTOR TO REVIEW DRAWINGS AND VERIFY FIELD CONDITIONS. REPORT ANY CONFLICTS OR DISCREPANCIES TO ARCHITECT.
CONTRACTOR TO PROVIDE WOOD BLOCKING FOR ALL WALL MOUNTED ACCESSORIES AND CABINETS (PROVIDE FIRE RATED BLOCKING WHERE APPLICABLE).
PROVIDE MOISTURE RESISTANT GYPSUM WALL BOARD AT ALL WET AREAS.
FIRE SAFE ALL PENETRATIONS IN FIRE RATED PARTITIONS.
ALL CONSTRUCTION TO MEET NORTH CAROLINA BUILDING CODE 2018 AND AMENDMENTS.



Belmont Mixed-Use
201 1/2 S. Main Street, Belmont, NC 28012
FIRST FLOOR PLAN

REVISIONS:

No.	Description	Date

DRAWN BY: DMB
CHECKED BY:
DATE: 08.07.2020

2018-6100.06

A1.01

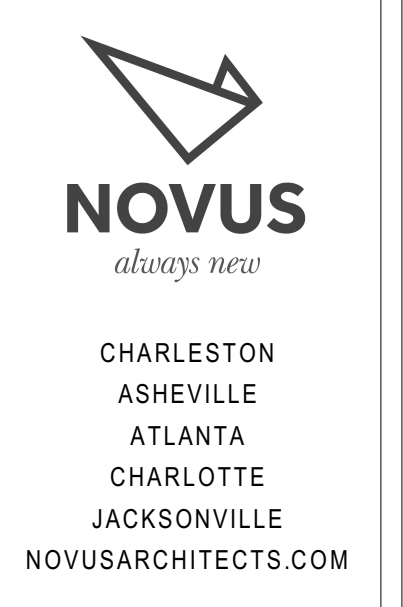
First Floor Plan

3/16" = 1'-0"

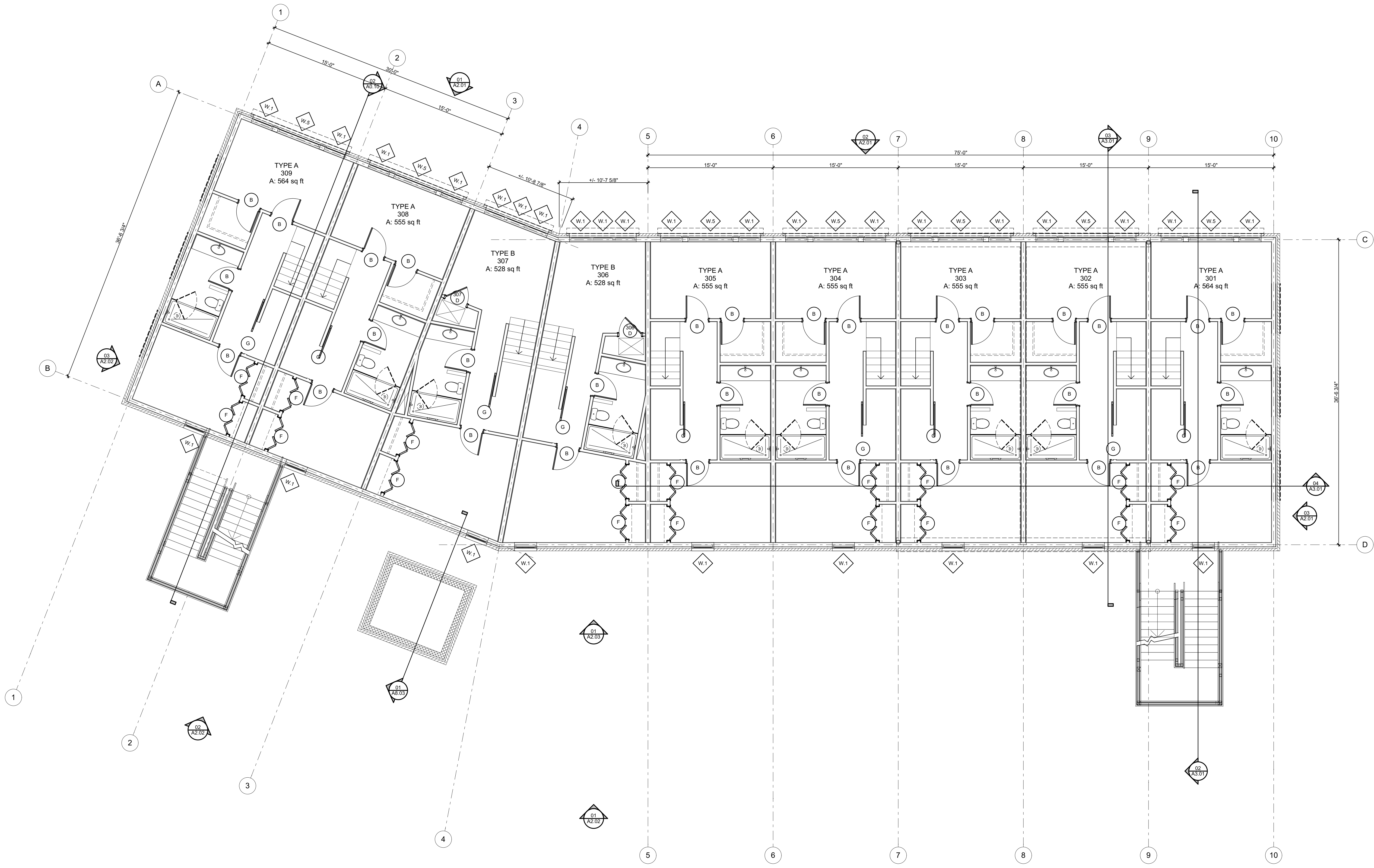
FOR REFERENCE ONLY

ALL DESIGNS, DRAWINGS, AND SPECIFICATIONS DEPICTED ON THIS SHEET ARE PROPERTY OF NOVUS ARCHITECTS INC. COPYRIGHT © 2020 ANY UNAUTHORIZED USE OR REPRODUCTION IS SUBJECT TO LEGAL PROSECUTION. POSSESSION IN ANY FORM CONSTITUTES ACCEPTANCE OF THESE CONDITIONS

GENERAL NOTES:
 DO NOT SCALE DRAWINGS. IF DIMENSIONS ARE IN QUESTION, OBTAIN CLARIFICATION FROM ARCHITECT.
 DIMENSIONS ARE FROM FACE OF STUD TO FACE OF STUD, AND/OR FACE OF MASONRY TO FACE OF MASONRY UNLESS NOTED OTHERWISE. CLEAR DIMENSIONS ARE FROM FINISHED FACE TO FINISHED FACE.
 GRID LINES ARE CENTER LINE - C - OF STUD UNLESS NOTED OTHERWISE.
 CONTRACTOR TO REVIEW DRAWINGS AND VERIFY FIELD CONDITIONS. REPORT ANY CONFLICTS OR DISCREPANCIES TO ARCHITECT.
 CONTRACTOR TO PROVIDE WOOD BLOCKING FOR ALL WALL MOUNTED ACCESSORIES AND CABINETS (PROVIDE FIRE RATED BLOCKING WHERE APPLICABLE).
 PROVIDE MOISTURE RESISTANT GYPSUM WALL BOARD AT ALL WET AREAS.
 FIRE SAFE ALL PENETRATIONS IN FIRE RATED PARTITIONS.
 ALL CONSTRUCTION TO MEET NORTH CAROLINA BUILDING CODE 2018 AND AMENDMENTS.



1950 Abbott Street
Suite 603
Charlotte, NC 28203
P: (704) 373-3101
www.novusarchitects.com



Belmont Mixed-Use
 201 1/2 S. Main Street, Belmont, NC 28012

SECOND FLOOR PLAN

REVISIONS: **▲**

No.	Description	Date

DRAWN BY: DMB
 CHECKED BY:
 DATE: 08.07.2020

2018-6100.06

A1.02

Second Floor Plan

3/16" = 1'-0"

FOR REFERENCE ONLY

ALL DESIGNS, DRAWINGS, AND SPECIFICATIONS DEPICTED ON THIS SHEET ARE PROPERTY OF NOVUS ARCHITECTS INC. COPYRIGHT © 2020 ANY UNAUTHORIZED USE OR REPRODUCTION IS SUBJECT TO LEGAL PROSECUTION. POSSESSION IN ANY FORM CONSTITUTES ACCEPTANCE OF THESE CONDITIONS.

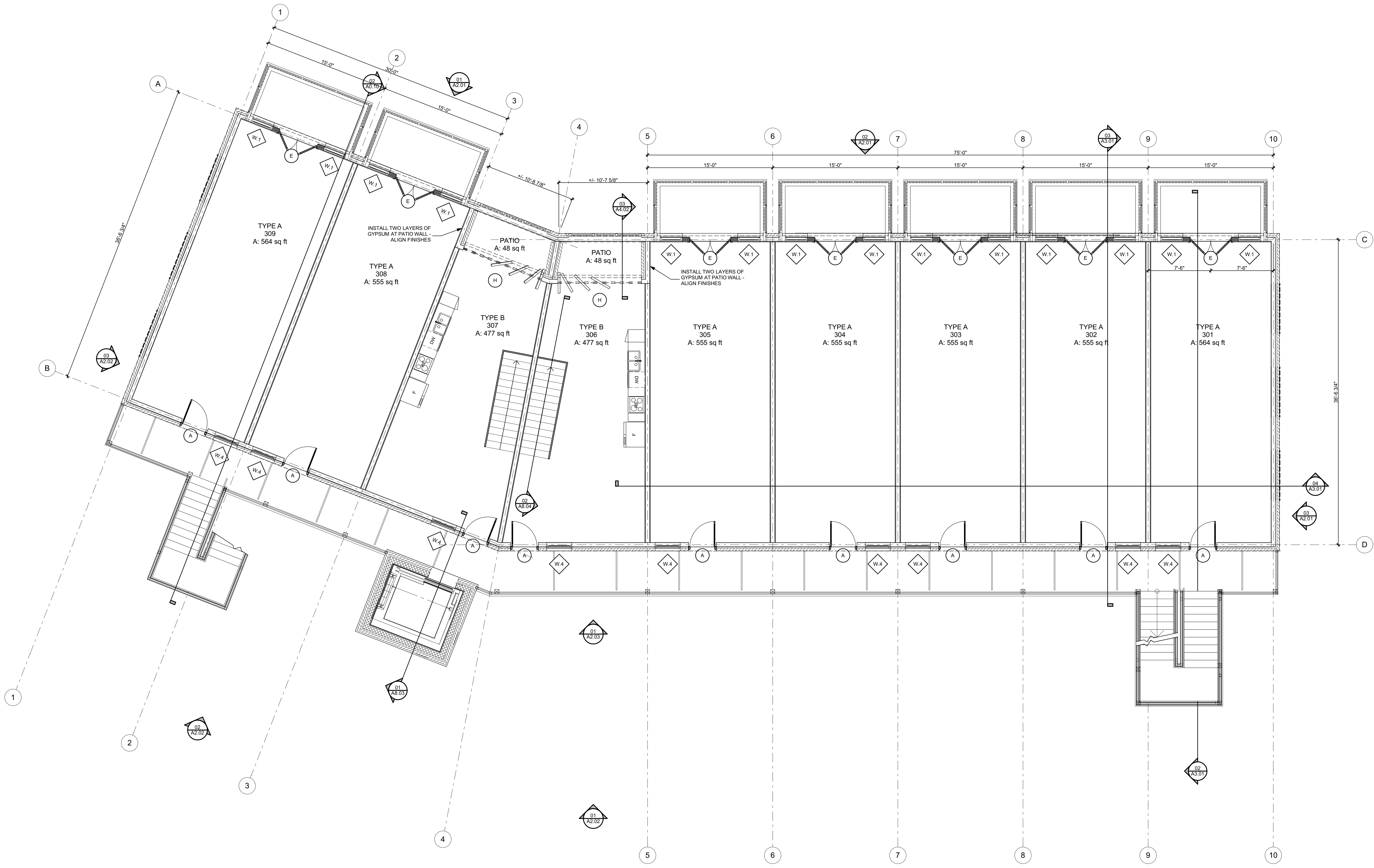
03

Third Floor RCP

3/16" = 1'-0"

GENERAL NOTES:
 DO NOT SCALE DRAWINGS. IF DIMENSIONS ARE IN QUESTION, OBTAIN CLARIFICATION FROM ARCHITECT.
 DIMENSIONS ARE FROM FACE OF STUD TO FACE OF STUD, AND/OR FACE OF MASONRY TO FACE OF MASONRY UNLESS NOTED OTHERWISE. CLEAR DIMENSIONS ARE FROM FINISHED FACE TO FINISHED FACE.
 GRID LINES ARE CENTER LINE - C - OF STUD UNLESS NOTED OTHERWISE.
 CONTRACTOR TO REVIEW DRAWINGS AND VERIFY FIELD CONDITIONS. REPORT ANY CONFLICTS OR DISCREPANCIES TO ARCHITECT.
 CONTRACTOR TO PROVIDE WOOD BLOCKING FOR ALL WALL MOUNTED ACCESSORIES AND CABINETS (PROVIDE FIRE RATED BLOCKING WHERE APPLICABLE).
 PROVIDE MOISTURE RESISTANT GYPSUM WALL BOARD AT ALL WET AREAS.
 FIRE SAFE ALL PENETRATIONS IN FIRE RATED PARTITIONS.
 ALL CONSTRUCTION TO MEET NORTH CAROLINA BUILDING CODE 2018 AND AMENDMENTS.

NOVUS
always new
 CHARLESTON
 ASHEVILLE
 ATLANTA
 CHARLOTTE
 JACKSONVILLE
 NOVUSARCHITECTS.COM
 1950 Abbott Street
 Suite 603
 Charlotte, NC 28203
 P: (704) 373-3101
 www.novusarchitects.com



Third Floor Plan

3/16" = 1'-0"

Belmont Mixed-Use
 201 1/2 S. Main Street, Belmont, NC 28012

THIRD FLOOR PLAN

REVISIONS:

No.	Description	Date

DRAWN BY: DMB
 CHECKED BY:
 DATE: 08.07.2020

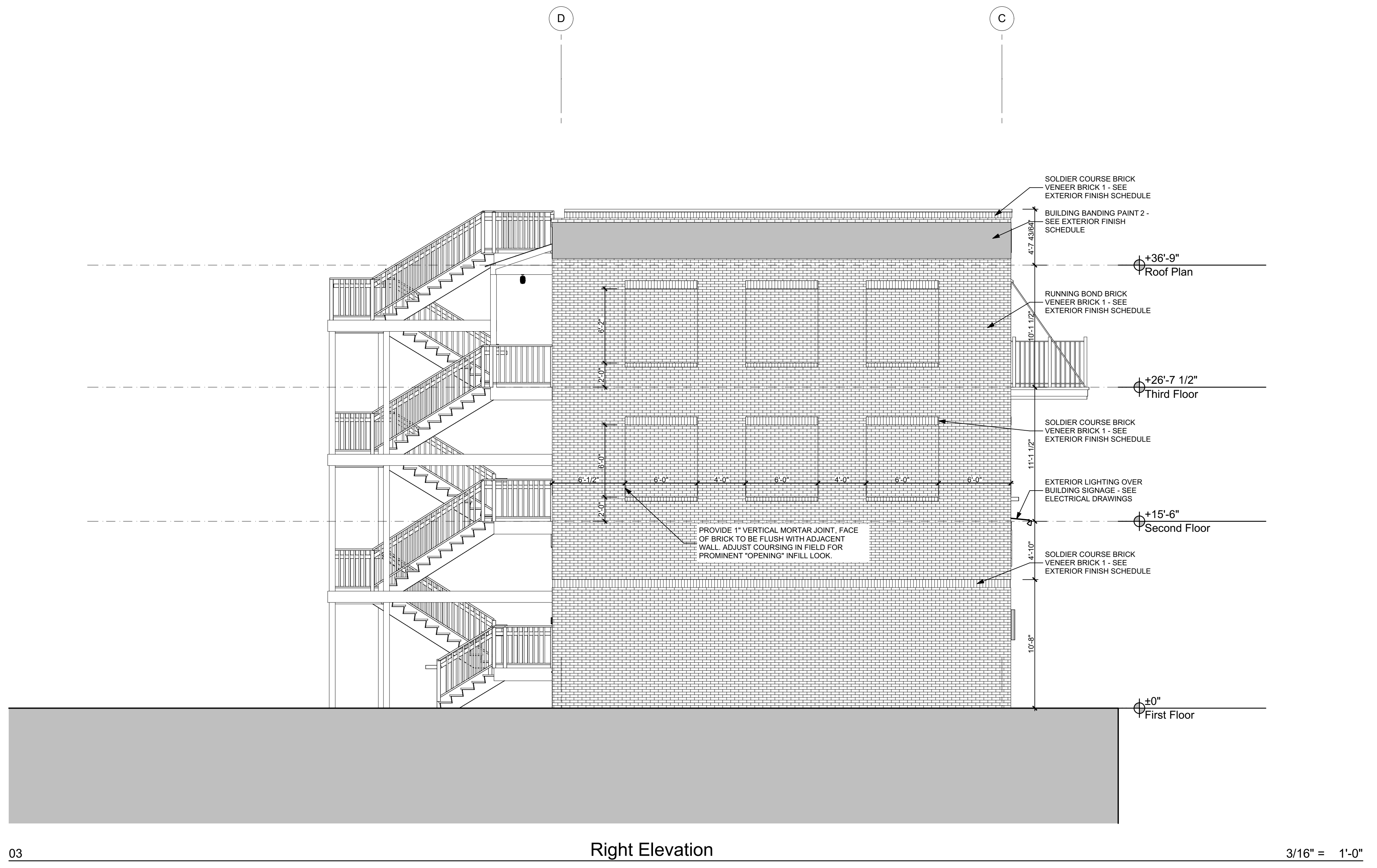
2018-6100.06

A1.03

FOR REFERENCE ONLY

ALL DESIGN DRAWINGS AND SPECIFICATIONS DEPICTED ON THIS SHEET ARE PROPERTY OF NOVUS ARCHITECTS INC. COPYRIGHT © 2020 ANY UNAUTHORIZED USE OR REPRODUCTION IS SUBJECT TO LEGAL PROSECUTION. POSSESSION IN ANY FORM CONSTITUTES ACCEPTANCE OF THESE CONDITIONS

EXTERIOR FINISH SCHEDULE						
BUILDING ELEMENTS	MATERIAL	GRAPHIC	MANUFACTURER	MODEL/PRODUCT	COLOR	TEXTURE
BUILDING SKIN: BRICK 1	MODULAR BRICK					
BUILDING SIGNAGE: PAINT 1	PAINT		SHERWIN WILLIAMS	EXTERIOR GRADE	WHITE	FINE FINISH
BUILDING BANDING: PAINT 2	PAINT		SHERWIN WILLIAMS	EXTERIOR GRADE	BLACK	FINE FINISH
BUILDING SKIN: WOOD 1	WOOD			EXTERIOR GRADE	TBD	FINE FINISH
BUILDING ROOF: STANDING SEAM ROOF	METAL			EXTERIOR GRADE	BLACK	FINE FINISH
BUILDING SKIN: EXPOSED BEAMS	STEEL			EXTERIOR GRADE	BLACK	FINE FINISH
BUILDING SKIN: COLUMNS	STEEL			EXTERIOR GRADE	BLACK	FINE FINISH
BUILDING SKIN: RAILING	STEEL			EXTERIOR GRADE	BLACK	FINE FINISH
BUILDING SKIN: WINDOWS	ALUMINUM			POWDER COAT	DARK BRONZE	
BUILDING SKIN: STOREFRONT DOORS	ALUMINUM			POWDER COAT	DARK BRONZE	
BUILDING SKIN: DOORS AND FRAMES	HOLLOW METAL				DARK BRONZE	
BUILDING SKIN: COPING AT PARAPET	ALUMINUM			POWDER COAT	BLACK	
GENERAL NOTES:	ALL WALL MOUNTED EQUIPMENT TO BE PAINTED TO MATCH ADJACENT COLOR OR TO BE SCREENED.					



03 Right Elevation 3/16" = 1'-0"



02 Front Elevation 2 3/16" = 1'-0" 01 Front Elevation 1 3/16" = 1'-0"

Belmont Mixed-Use
201 1/2 S. Main Street, Belmont, NC 28012

EXTERIOR ELEVATIONS

REVISIONS		
No.	Description	Date

DRAWN BY: DMB
CHECKED BY:
DATE: 08.07.2020

2018-6100.06

A2.01

FOR REFERENCE ONLY

ALL DESIGNS, DRAWINGS, AND SPECIFICATIONS DEPICTED ON THIS SHEET ARE PROPERTY OF NOVUS ARCHITECTS INC. COPYRIGHT © 2020 ANY UNAUTHORIZED USE OR REPRODUCTION IS SUBJECT TO LEGAL PROSECUTION. POSSESSION IN ANY FORM CONSTITUTES ACCEPTANCE OF THESE CONDITIONS.

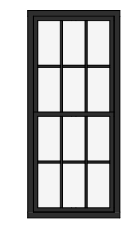
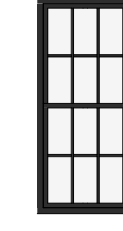


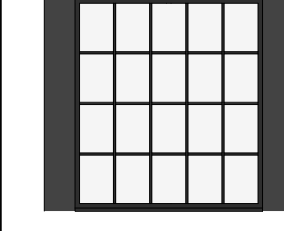
REVISIONS		
No.	Description	Date

DRAWN BY: DMB
CHECKED BY:
DATE: 08.07.2020

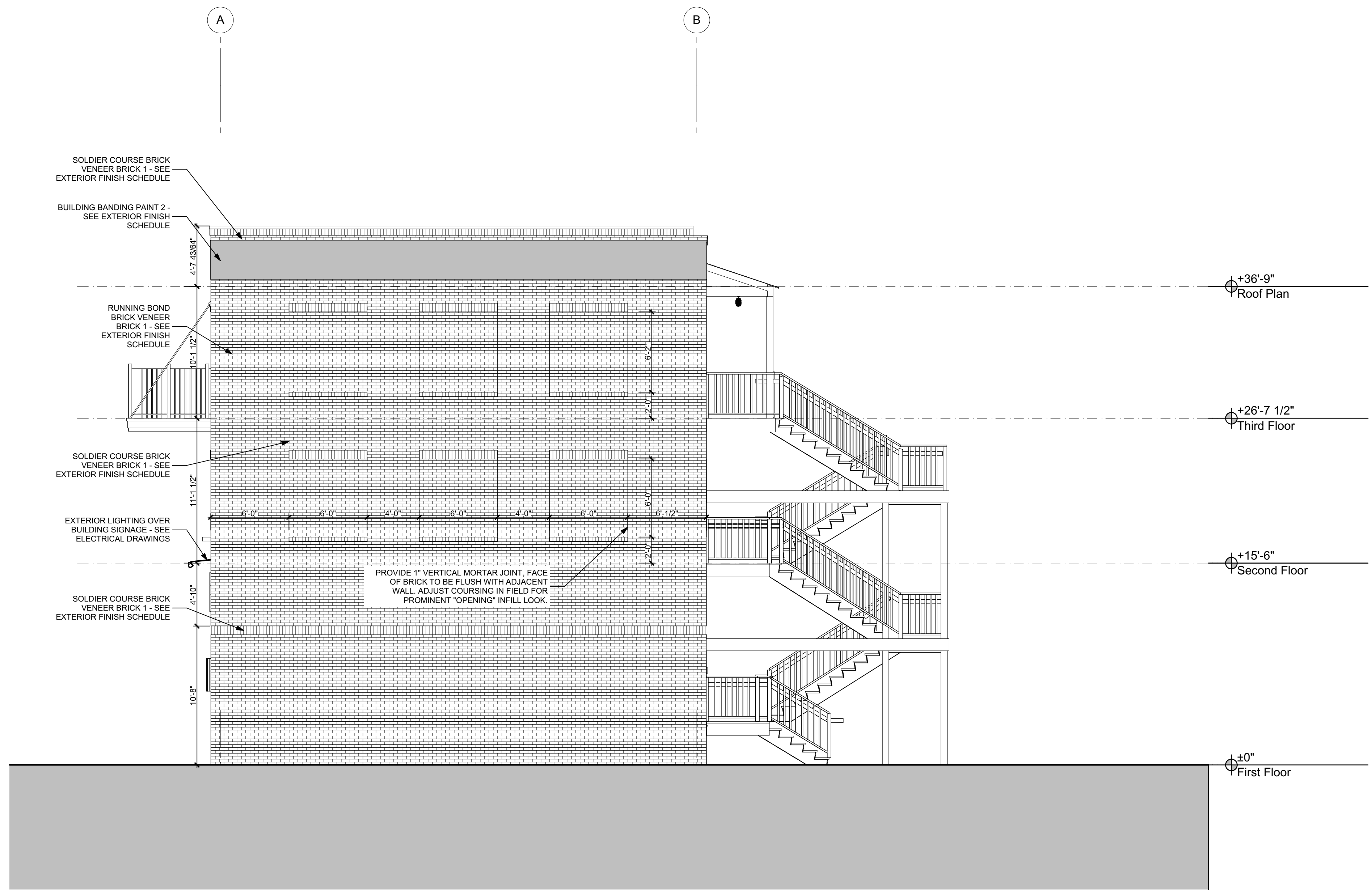
2018-6100.06

A2.02

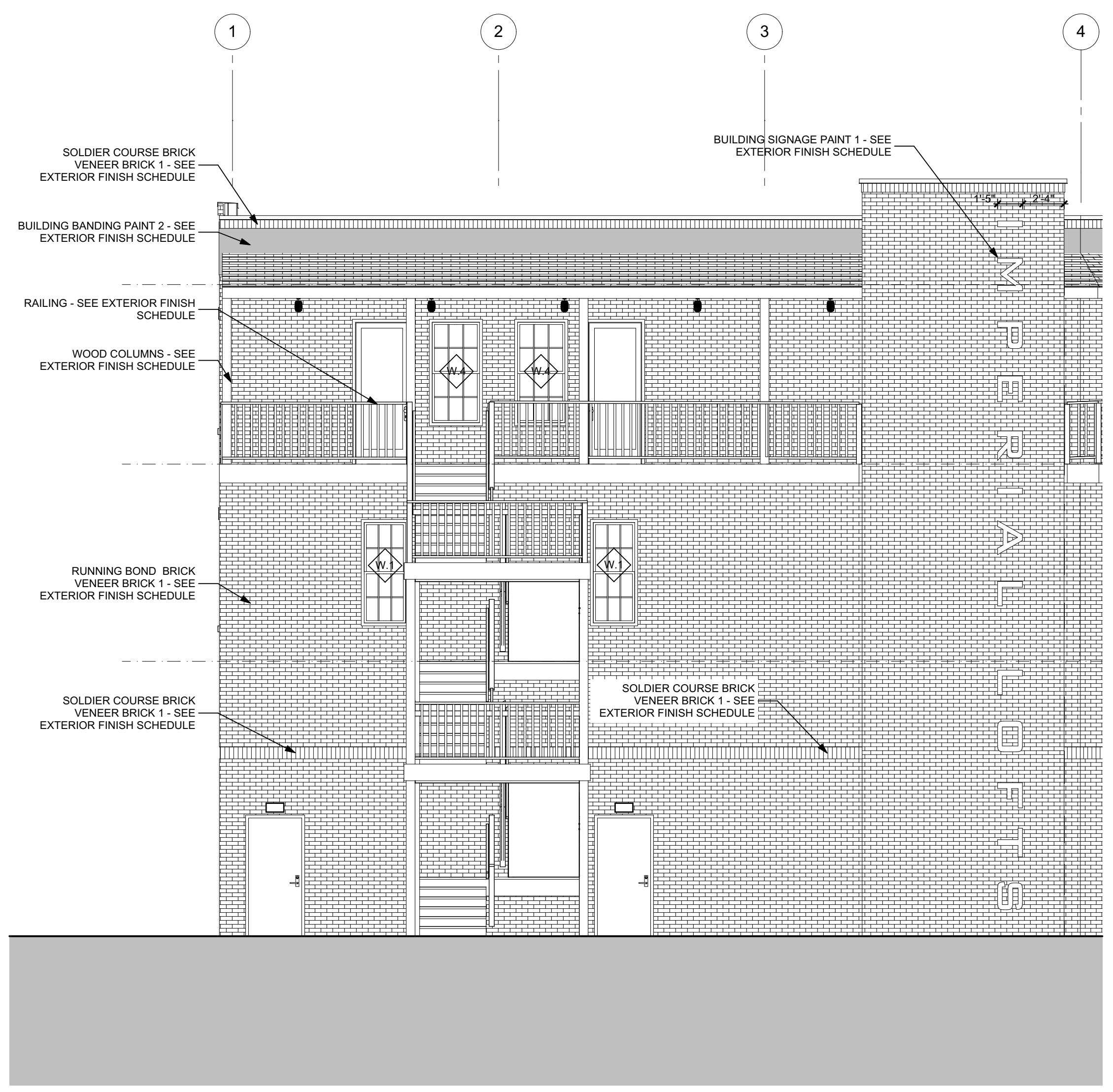
FOR REFERENCE ONLY

Window Types					
VIEW					
ID	W.1	W.1	W.1	W.4	W.5
Type	FIXED	FIXED	FIXED	FIXED	FIXED
Library Part Name	W Double Hung 22	W Double Hung 22	W Single Hung 1 22	W Single Hung 1 22	W Fixed 22
Width	2'-8"	2'-8"	2'-8"	3'-0"	5'-5"
Height	6'-0"	6'-0"	6'-0"	6'-0"	6'-0"
Sill Height	24.00"	24.00"	24.00"	26.00"	24.00"

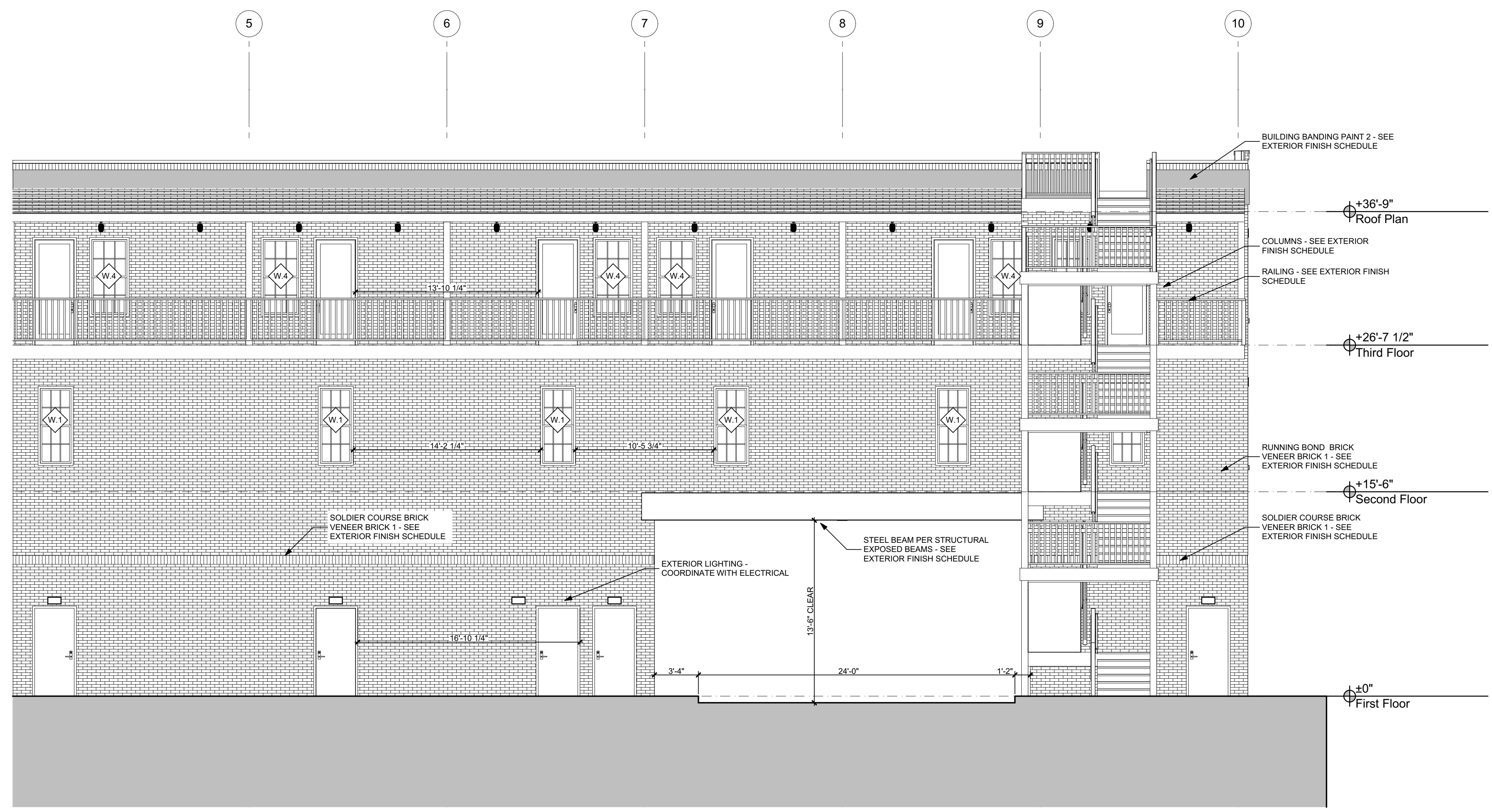
04 Window Types 1" = 1'-0"



03 Left Elevation 3/16" = 1'-0"



02 Back Elevation 2 3/16" = 1'-0"

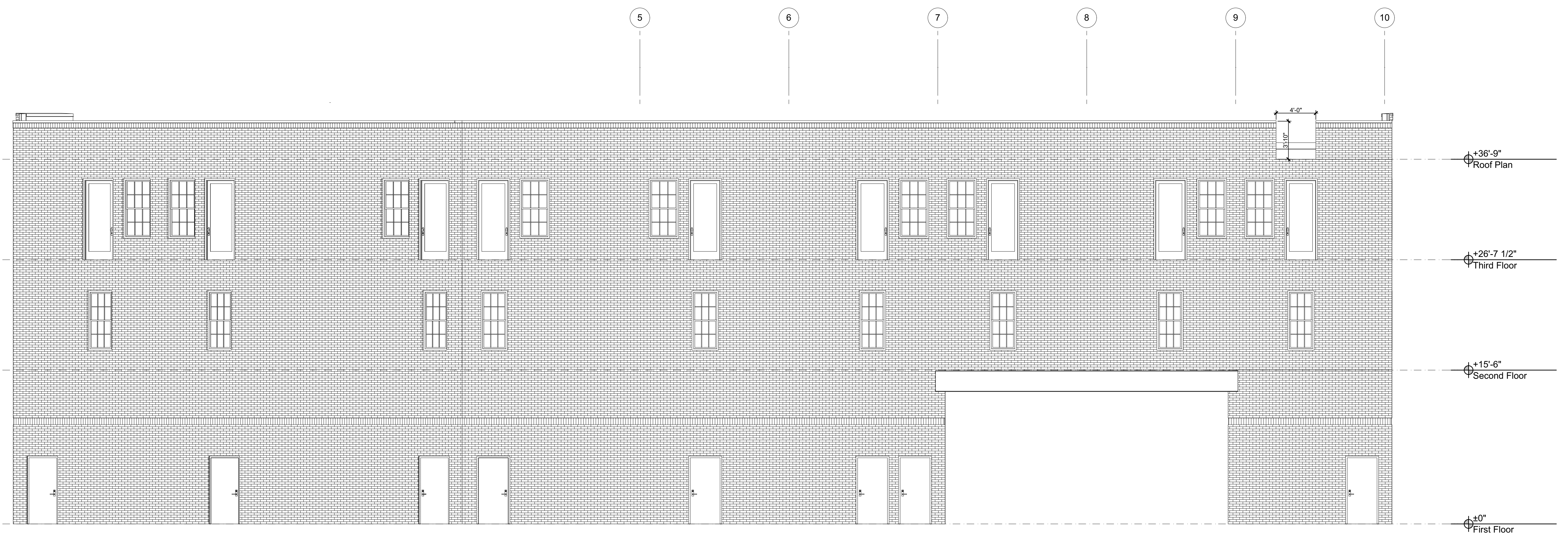


01 Back Elevation 1 3/16" = 1'-0"

ALL DESIGNS, DRAWINGS, AND SPECIFICATIONS DEPICTED ON THIS SHEET ARE PROPERTY OF NOVUS ARCHITECTS INC. COPYRIGHT © 2020 ANY UNAUTHORIZED USE OR REPRODUCTION IS SUBJECT TO LEGAL PROSECUTION. POSSESSION IN ANY FORM CONSTITUTES ACCEPTANCE OF THESE CONDITIONS

Window Types					
VIEW					
ID	W.1	W.1	W.1	W.4	W.5
Type		FIXED			
Library Part Name	W Double Hung 22	W Double Hung 22	W Single Hung1 22	W Single Hung1 22	W Fixed 22
Width	2'-8"	2'-8"	2'-8"	3'-0"	5'-5"
Height	6'-0"	6'-0"	6'-0"	6'-0"	6'-0"
Sill Height	24.00"	24.00"	24.00"	26.00"	24.00"

02 Window Types 1" = 1'-0"



Elevation w/o Shafts

3/16" = 1'-0"

Belmont Mixed-Use
201 1/2 S. Main Street, Belmont, NC 28012

EXTERIOR ELEVATIONS

REVISIONS:		
No.	Description	Date

DRAWN BY: DMB
CHECKED BY:
DATE: 08.07.2020

2018-6100.06

A2.03

FOR REFERENCE ONLY