

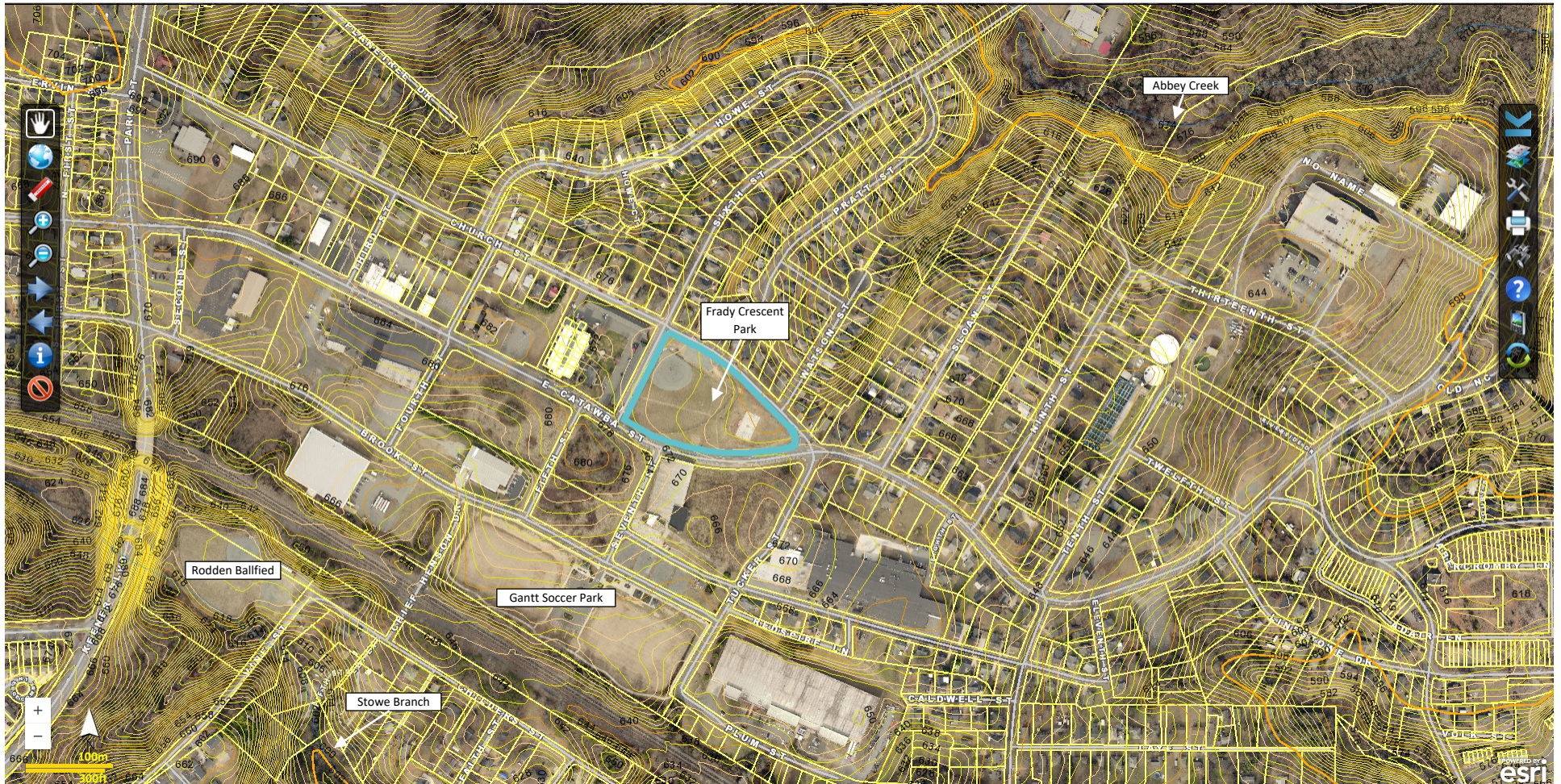
Site Map and Stormwater System: Crescent Frady Park

611 E Catawba St, Belmont, NC 28012 – PID# 126080

Aerial Photo of Stormwater System

- *All locations of system elements (i.e. structures, ditches, channels, streams, etc.) are approximate*
- *Representation on this map does not indicate elements are the City of Belmont's responsibility*
- *Gaston GIS 2018 Pictometry*

City of Belmont – Stormwater Management

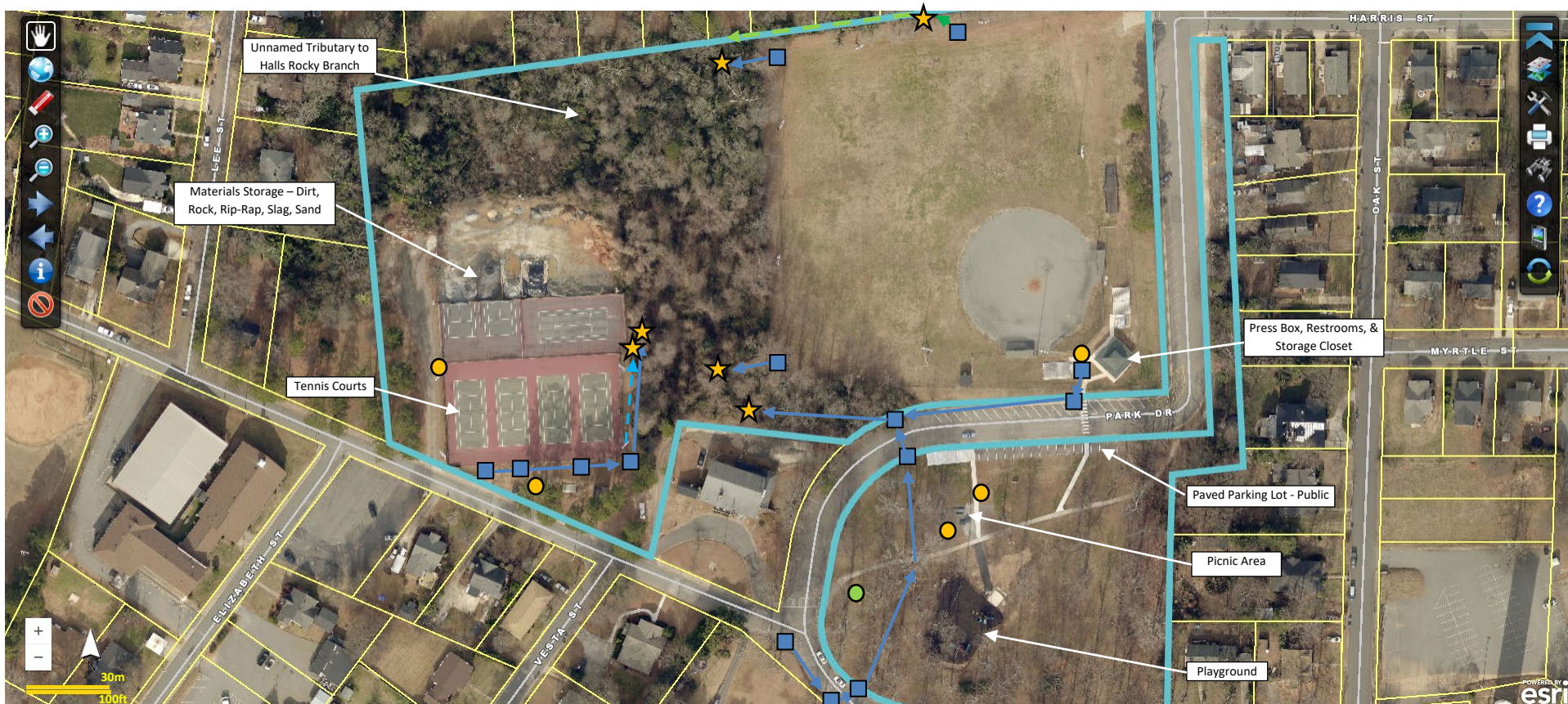


Site Map and Topography: Crescent Frady Park
 611 E Catawba St, Belmont, NC 28012 – PID# 126080

Aerial Photo of Stormwater System

- *All locations of system elements (i.e. structures, ditches, channels, streams, etc.) are approximate*
- *Representation on this map does not indicate elements are the City of Belmont’s responsibility*
- *Gaston GIS 2018 Pictometry*

City of Belmont – Stormwater Management



Site Map and Stormwater System: Davis Park

204 Park Dr, Belmont, NC 28012 – PID# 125723

Site Map & Stormwater System

- *All locations of system elements (i.e. structures, ditches, channels, streams, etc.) are approximate*
- *Representation on this map does not indicate elements are the City of Belmont's responsibility*
- *Gaston GIS 2018 Pictometry*

City of Belmont – Stormwater Management



Site Map and Topography: Davis Park
204 Park Dr, Belmont, NC 28012 – PID# 125723

Site Map & Stormwater System

- *All locations of system elements (i.e. structures, ditches, channels, streams, etc.) are approximate*
- *Representation on this map does not indicate elements are the City of Belmont’s responsibility*
- *Gaston GIS 2018 Pictometry*

City of Belmont – Stormwater Management



- Storm Drain
- Storm Manhole/Junction Box
- Generator - Diesel
- Bar Screen
- Wet Well
- Control Panel
- RCP Pipe
- Open Swale/Ditch
- Stormwater Outfall

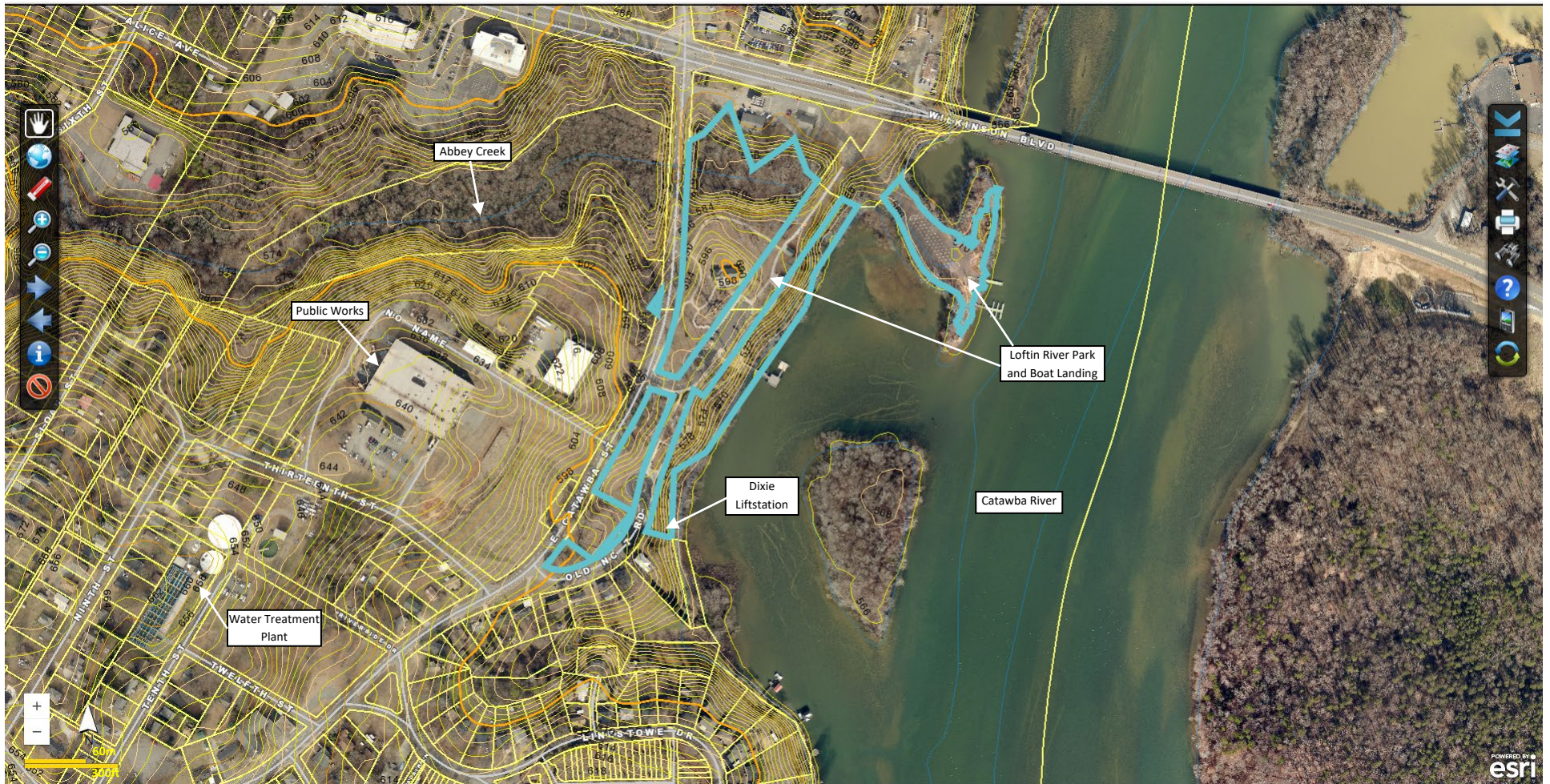
Site Map and Stormwater System: Dixie Liftstation

1323 East Catawba St, Belmont, NC 28012 – PID# 214172

Aerial Photo of Stormwater System

- *All locations of system elements (i.e. structures, ditches, channels, streams, etc.) are approximate*
- *Representation on this map does not indicate elements are the City of Belmont’s responsibility*
- *Gaston GIS 2018 Pictometry*

City of Belmont – Stormwater Management

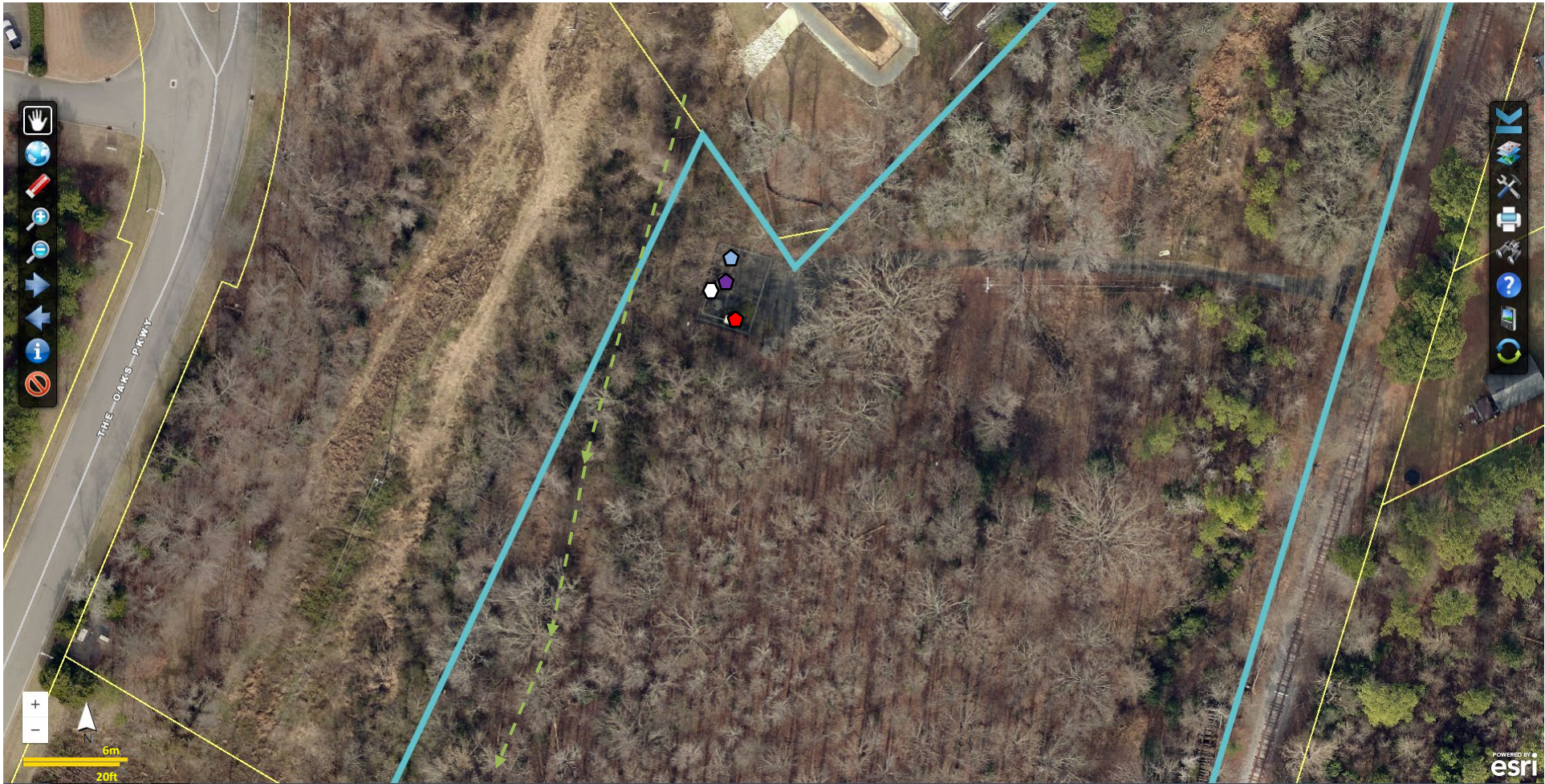


Site Map and Topography: Dixie Liftstation
 1323 East Catawba St, Belmont, NC 28012 – PID# 214172

Aerial Photo of Stormwater System

- *All locations of system elements (i.e. structures, ditches, channels, streams, etc.) are approximate*
- *Representation on this map does not indicate elements are the City of Belmont’s responsibility*
- *Gaston GIS 2018 Pictometry*

City of Belmont – Stormwater Management



- Storm Drain
- Storm Manhole/Junction Box
- Generator - Diesel
- Bar Screen
- Wet Well
- Control Panel
- RCP Pipe
- Open Swale/Ditch/Unnamed Stream
- Stormwater Outfall

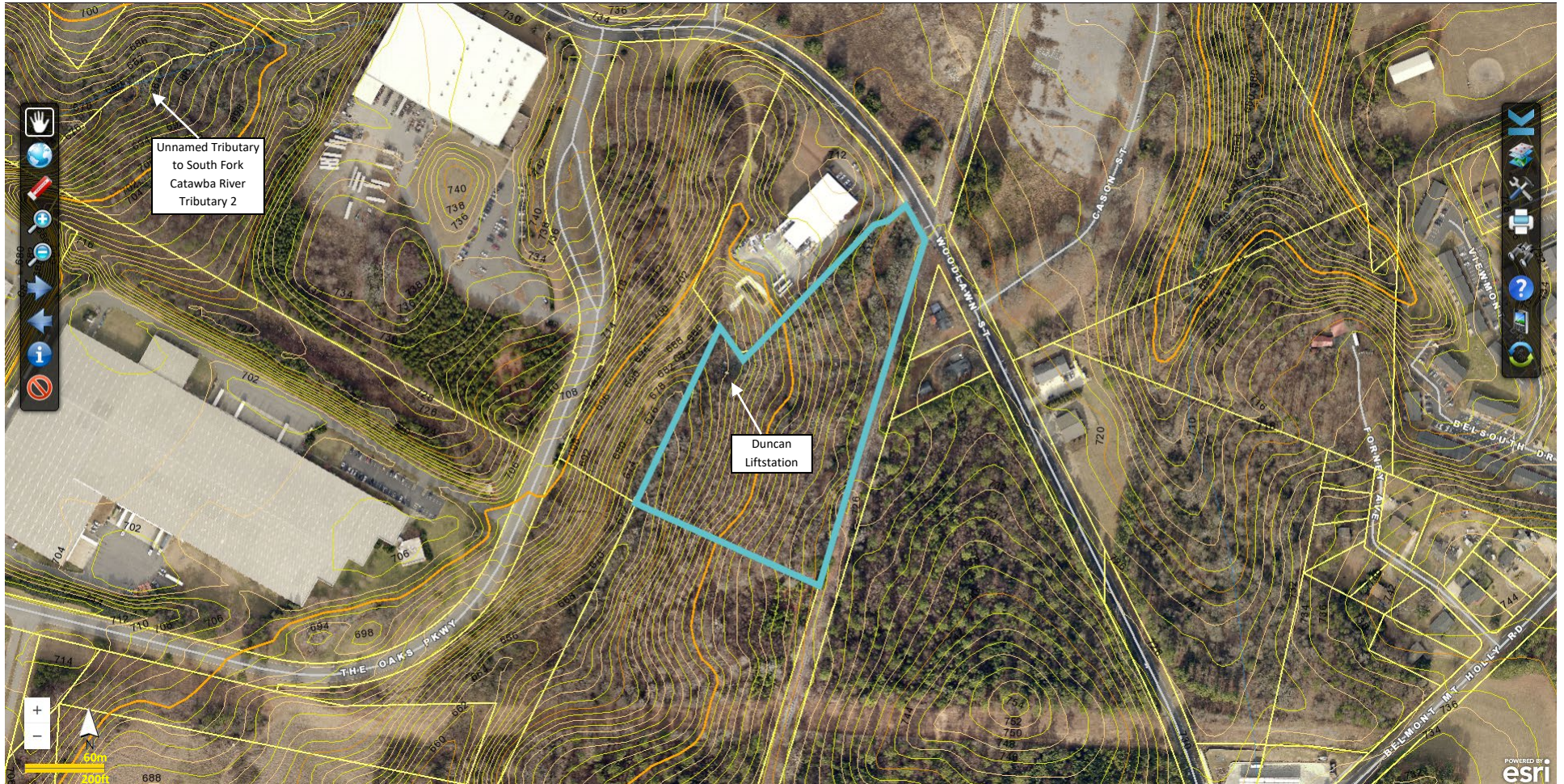
Site Map and Stormwater System: Duncan Liftstation

175 Woodlawn Ave, Belmont, NC 28012 – PID# 219437

Aerial Photo of Stormwater System

- *All locations of system elements (i.e. structures, ditches, channels, streams, etc.) are approximate*
- *Representation on this map does not indicate elements are the City of Belmont's responsibility*
- *Gaston GIS 2018 Pictometry*

City of Belmont – Stormwater Management



Site Map and Topography: Duncan Liftstation

175 Woodlawn Ave, Belmont, NC 28012 – PID# 219437

Aerial Photo of Stormwater System

- *All locations of system elements (i.e. structures, ditches, channels, streams, etc.) are approximate*
- *Representation on this map does not indicate elements are the City of Belmont's responsibility*
- *Gaston GIS 2018 Pictometry*

City of Belmont – Stormwater Management



Site Map and Stormwater System: Fire Department

301 Keener Blvd, Belmont, NC 28012 – PID# 126770

Aerial Photo of Stormwater System

All locations of system elements (i.e. structures, ditches, channels, streams, etc.) are approximate

Representation on this map does not indicate elements are the City of Belmont's responsibility

Gaston GIS 2018 Pictometry

City of Belmont – Stormwater Management

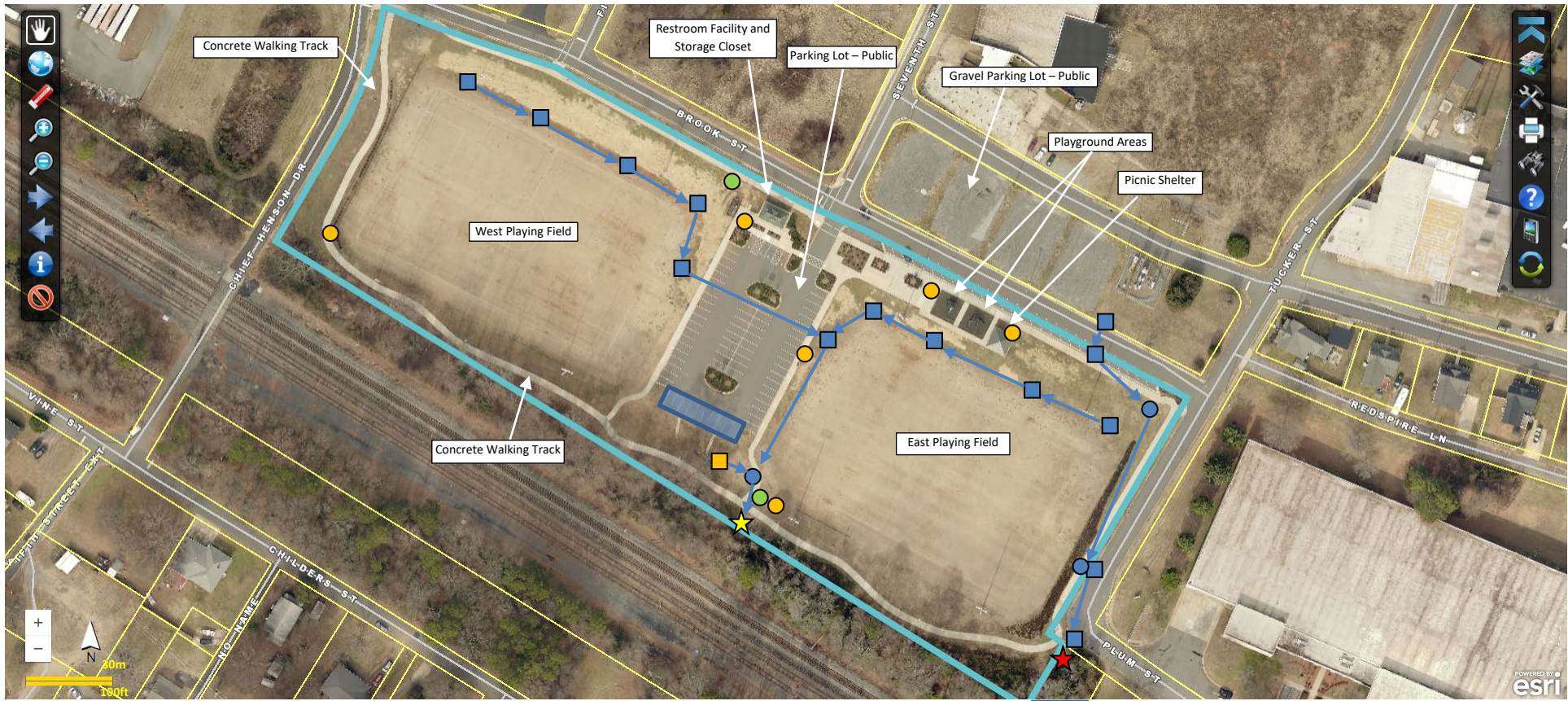


Site Map and Topography: Fire Department
301 Keener Blvd, Belmont, NC 28012 – PID# 126770

Aerial Photo of Stormwater System

- *All locations of system elements (i.e. structures, ditches, channels, streams, etc.) are approximate*
- *Representation on this map does not indicate elements are the City of Belmont’s responsibility*
- *Gaston GIS 2018 Pictometry*

City of Belmont – Stormwater Management



- FES Inlet
- Storm Drain
- Permeable Pavers
- RCP Pipe
- Manhole Junction
- ★ Outfall 1
- ★ Outfall 2
- Trash/Recycling Containers
- Pet Waste Station

Site Map and Stormwater System: Gantt Park
 500 Brook St, Belmont, NC 28012 – PID# 221101

Site Map & Stormwater System

City of Belmont – Stormwater Management

All locations of system elements (i.e. structures, ditches, channels, streams, etc.) are approximate
 Representation on this map does not indicate elements are the City of Belmont’s responsibility
 Gaston GIS 2018 Pictometry



Site Map and Topography: Gantt Park
 500 Brook St, Belmont, NC 28012 – PID# 221101

Site Map & Stormwater System

- *All locations of system elements (i.e. structures, ditches, channels, streams, etc.) are approximate*
- *Representation on this map does not indicate elements are the City of Belmont’s responsibility*
- *Gaston GIS 2018 Pictometry*

City of Belmont – Stormwater Management



- Culvert Pipe
- Junction Manhole
- Pipe Outfall
- Catch Basin
- Walled Dumpster Pad (Co-Op w/ Downtown Businesses)
- Trash/Recycling Containers

Site Map and Stormwater System: Glenway Parking Lot

40 Glenway St Belmont, NC 28012 – PID# 125868

Aerial Photo of Stormwater System

All locations of system elements (i.e. structures, ditches, channels, streams, etc.) are approximate
 Representation on this map does not indicate elements are the City of Belmont’s responsibility
 Gaston GIS 2018 Pictometry

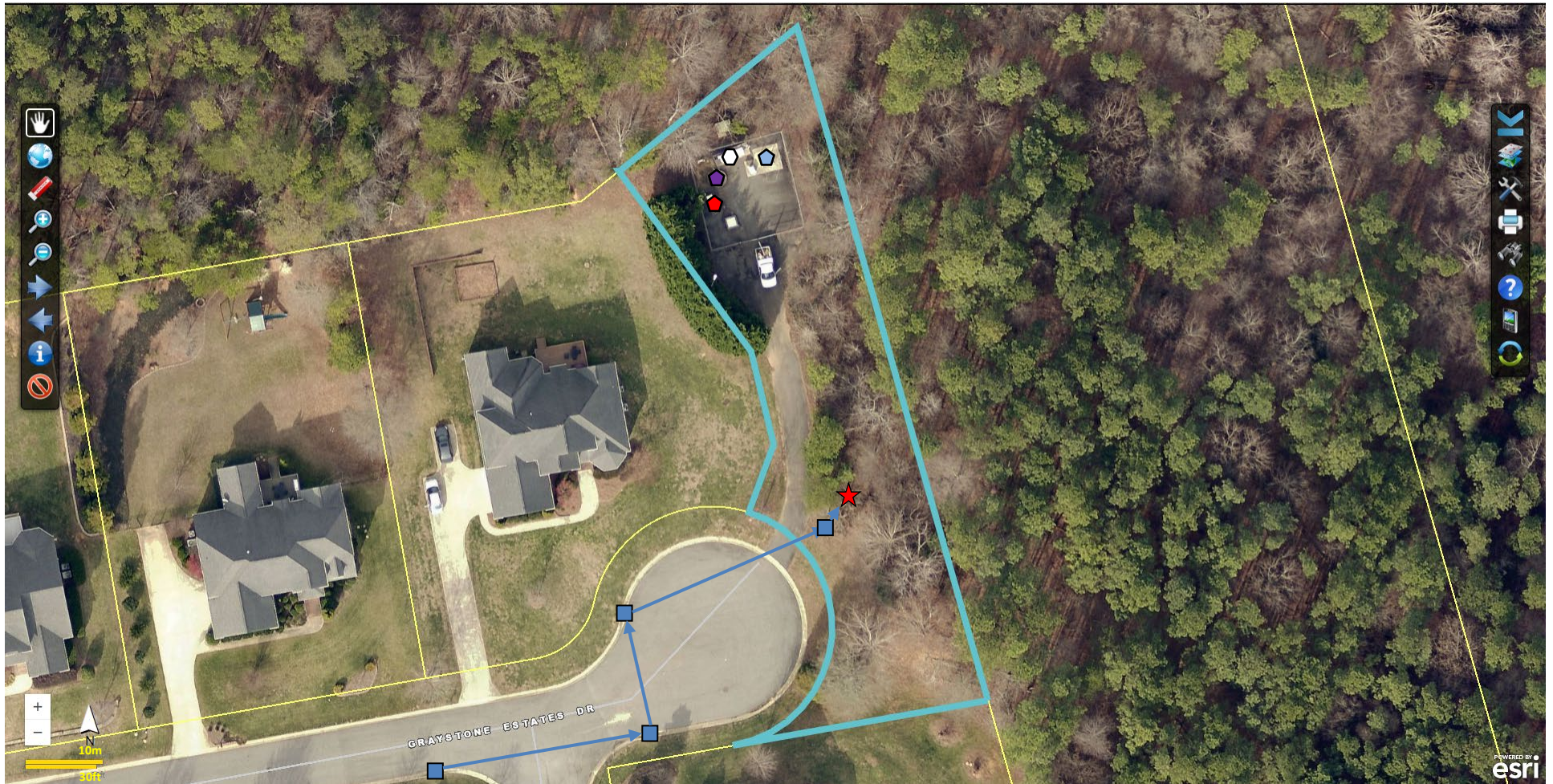


Site Map and Topography: Glenway Parking Lot
 40 Glenway St Belmont, NC 28012 – PID# 125868

Aerial Photo of Stormwater System

- *All locations of system elements (i.e. structures, ditches, channels, streams, etc.) are approximate*
- *Representation on this map does not indicate elements are the City of Belmont’s responsibility*
- *Gaston GIS 2018 Pictometry*

City of Belmont – Stormwater Management



- | | | | | | |
|-------------|----------------------------|--------------------|----------------------|----------|---------------|
| Storm Drain | Storm Manhole/Junction Box | Generator - Diesel | Bar Screen | Wet Well | Control Panel |
| RCP Pipe | Open Swale/Ditch | Stormwater Outfall | SCM Outlet Structure | | |

Site Map and Stormwater System: Greystone Liftstation

5063 Greystone Estates Dr, Belmont, NC 28012 – PID# 190359

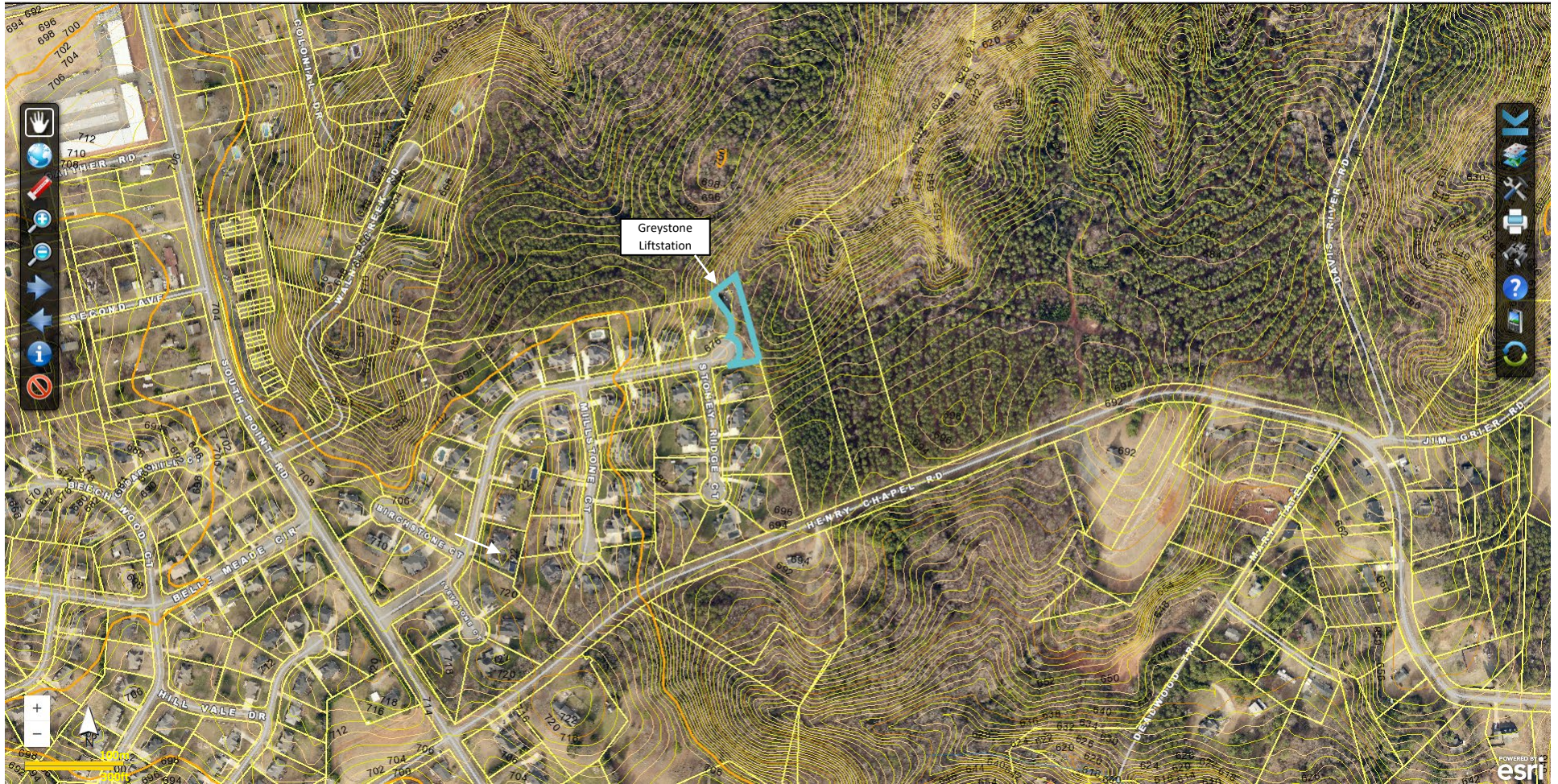
Aerial Photo of Stormwater System

All locations of system elements (i.e. structures, ditches, channels, streams, etc.) are approximate

Representation on this map does not indicate elements are the City of Belmont's responsibility

Gaston GIS 2018 Pictometry

City of Belmont – Stormwater Management



Site Map and Topography: Greystone Liftstation
5063 Greystone Estates Dr, Belmont, NC 28012 – PID# 190359

Aerial Photo of Stormwater System

- *All locations of system elements (i.e. structures, ditches, channels, streams, etc.) are approximate*
- *Representation on this map does not indicate elements are the City of Belmont’s responsibility*
- *Gaston GIS 2018 Pictometry*

City of Belmont – Stormwater Management



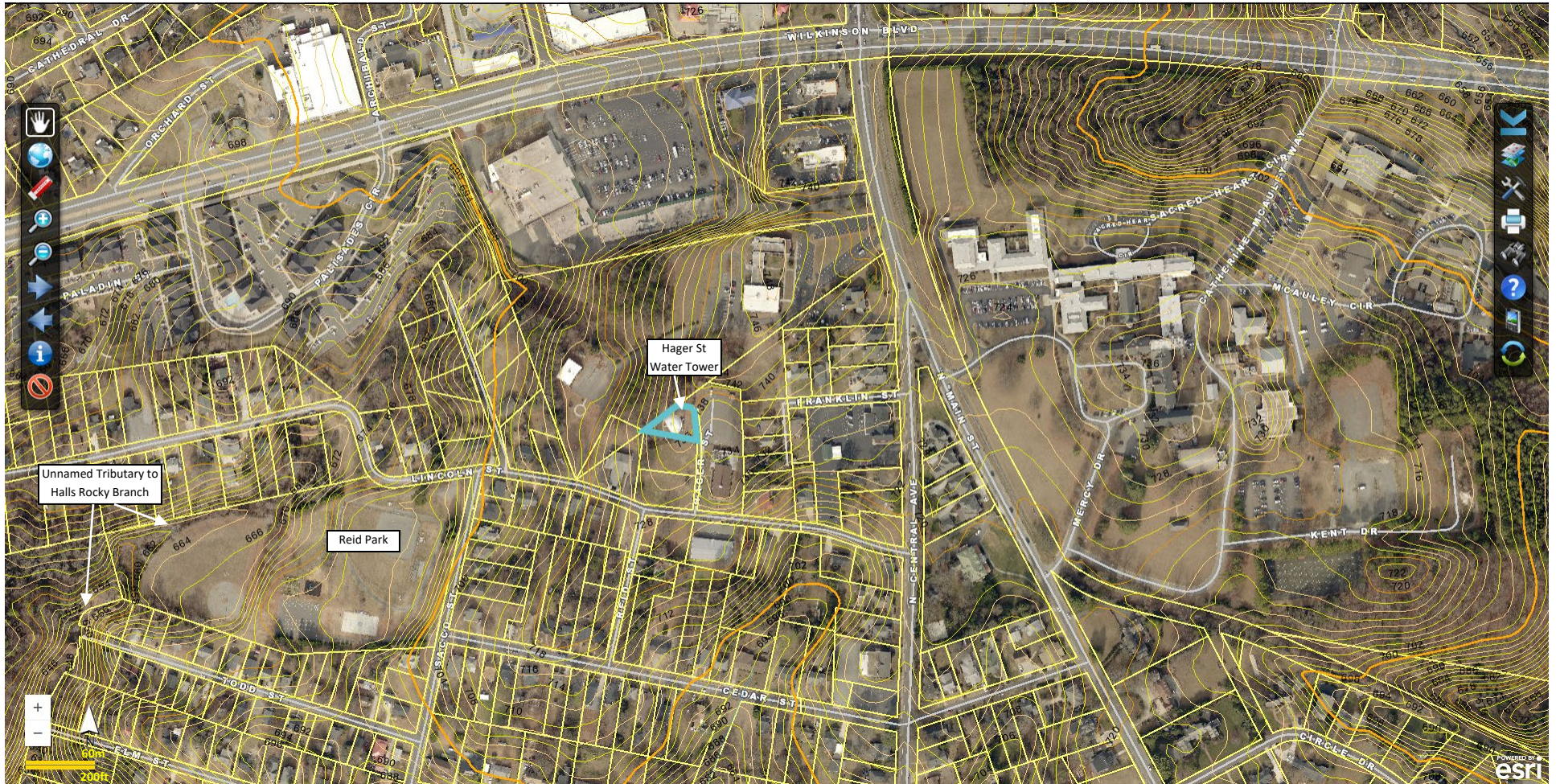
- Storm Drain
- RCP Pipe
- Storm Manhole/Junction Box
- - - Open Swale/Ditch
- ★ Generator - Diesel
- ★ Stormwater Outfall
- ◆ SCM Outlet Structure

Site Map and Stormwater System: Hager St Water Tower (Water Distribution)

91 Hager St, Belmont, NC 28012 – PID# 125077

Aerial Photo of Stormwater System

All locations of system elements (i.e. structures, ditches, channels, streams, etc.) are approximate
 Representation on this map does not indicate elements are the City of Belmont’s responsibility
 Gaston GIS 2018 Pictometry



Site Map and Topography: Hager St Water Tower (Water Distribution)
 91 Hager St, Belmont, NC 28012 – PID# 125077

Aerial Photo of Stormwater System

- *All locations of system elements (i.e. structures, ditches, channels, streams, etc.) are approximate*
- *Representation on this map does not indicate elements are the City of Belmont’s responsibility*
- *Gaston GIS 2018 Pictometry*

City of Belmont – Stormwater Management



- Storm Drain
→ RCP Pipe
- Storm Manhole/Junction Box
- - - → Open Swale/Ditch
- ★ Generator - Diesel
★ Stormwater Outfall
- ⬠ Bar Screen
⬠ Wet Well
⬠ Control Panel

Site Map and Stormwater System: Hall Liftstation

60 Ervin St, Belmont, NC 28012 – PID# 125922

Aerial Photo of Stormwater System

- *All locations of system elements (i.e. structures, ditches, channels, streams, etc.) are approximate*
- *Representation on this map does not indicate elements are the City of Belmont's responsibility*
- *Gaston GIS 2018 Pictometry*

City of Belmont – Stormwater Management



Site Map and Topography: Hall Liftstation

60 Ervin St, Belmont, NC 28012 – PID# 125922

Aerial Photo of Stormwater System

- *All locations of system elements (i.e. structures, ditches, channels, streams, etc.) are approximate*
- *Representation on this map does not indicate elements are the City of Belmont’s responsibility*
- *Gaston GIS 2018 Pictometry*

City of Belmont – Stormwater Management



Site Map and Stormwater System: Lake Point Liftstation

831 Armstrong Rd, Belmont, NC 28012 – PID# 218352

Aerial Photo of Stormwater System

City of Belmont – Stormwater Management

All locations of system elements (i.e. structures, ditches, channels, streams, etc.) are approximate
 Representation on this map does not indicate elements are the City of Belmont’s responsibility
 Gaston GIS 2018 Pictometry



Site Map and Topography: Lake Point Liftstation
 831 Armstrong Rd, Belmont, NC 28012 – PID# 218352

Aerial Photo of Stormwater System

- *All locations of system elements (i.e. structures, ditches, channels, streams, etc.) are approximate*
- *Representation on this map does not indicate elements are the City of Belmont’s responsibility*
- *Gaston GIS 2018 Pictometry*

City of Belmont – Stormwater Management



- Storm Drain
→ RCP Pipe
- Storm Manhole/Junction Box
- - - → Unnamed Stream
- ◆ Generator - Diesel
★ Stormwater Outfall
- ◡ Bar Screen
- ◡ Wet Well
- ◡ Control Panel

Site Map and Stormwater System: Lincoln Liftstation

441 Lincoln St, Belmont, NC 28012 – PID# 186044

Aerial Photo of Stormwater System

- *All locations of system elements (i.e. structures, ditches, channels, streams, etc.) are approximate*
- *Representation on this map does not indicate elements are the City of Belmont's responsibility*
- *Gaston GIS 2018 Pictometry*

City of Belmont – Stormwater Management

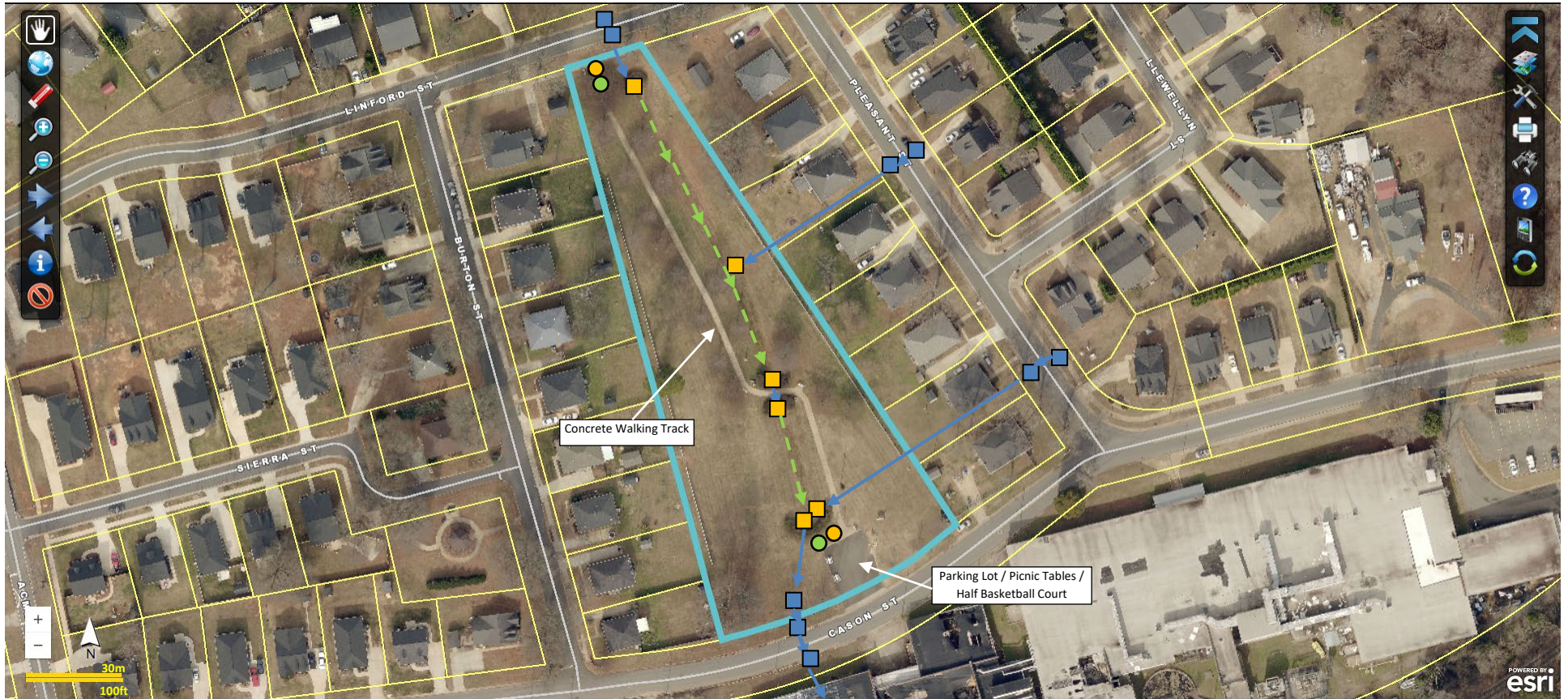


Site Map and Topography: Lincoln Liftstation
 441 Lincoln St, Belmont, NC 28012 – PID# 186044

Aerial Photo of Stormwater System

- *All locations of system elements (i.e. structures, ditches, channels, streams, etc.) are approximate*
- *Representation on this map does not indicate elements are the City of Belmont’s responsibility*
- *Gaston GIS 2018 Pictometry*

City of Belmont – Stormwater Management



- FES Inlet/Outlet
- Storm Drain
- RCP Pipe
- Open Drainage Swale
- Trash/Recycling Containers
- Pet Waste Station

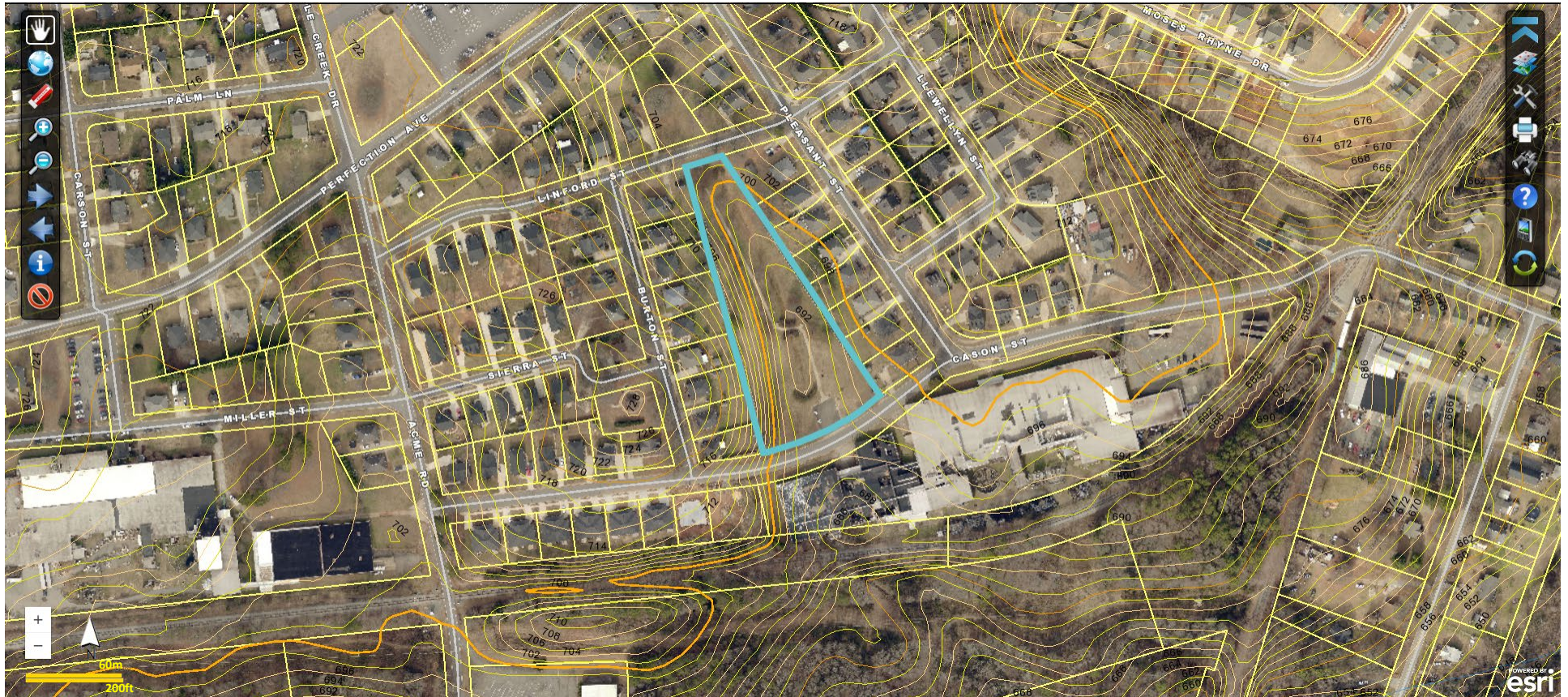
Site Map and Stormwater System: Linford Park

1010 Cason St, Belmont, NC 28012 – PID# 201308

Site Map & Stormwater System

- *All locations of system elements (i.e. structures, ditches, channels, streams, etc.) are approximate*
- *Representation on this map does not indicate elements are the City of Belmont's responsibility*
- *Gaston GIS 2018 Pictometry*

City of Belmont – Stormwater Management



Site Map and Topography: Linford Park

1010 Cason St, Belmont, NC 28012 – PID# 201308

Site Map & Stormwater System

- *All locations of system elements (i.e. structures, ditches, channels, streams, etc.) are approximate*
- *Representation on this map does not indicate elements are the City of Belmont's responsibility*
- *Gaston GIS 2018 Pictometry*

City of Belmont – Stormwater Management



- Storm Drain/Catch Basin
- Junction Box Manhole
- ★ Outfall No. 001
- ★ Outfall No. 002
- Flared End Section
- Trash/Recycling Containers
- Pet Waste Station
- Stormwater Pipe/Culvert

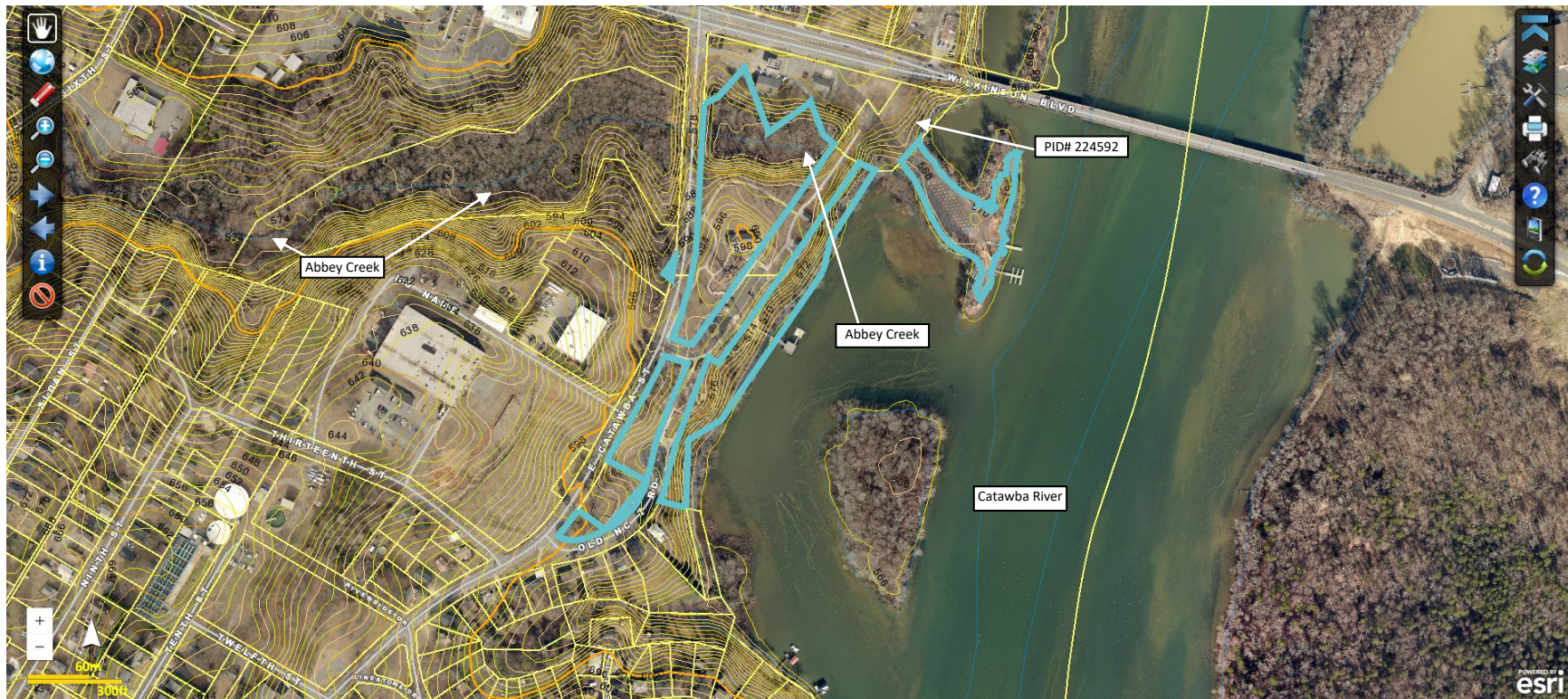
Site Map and Stormwater System: Loftin Riverfront Park

1400 E Catawba St, Belmont, NC 28012 – PID# 214172 & 224592

Site Map & Stormwater System

- *All locations of system elements (i.e. structures, ditches, channels, streams, etc.) are approximate*
- *Representation on this map does not indicate elements are the City of Belmont's responsibility*
- *Gaston County 2018 Pictometry*

City of Belmont – Stormwater Management

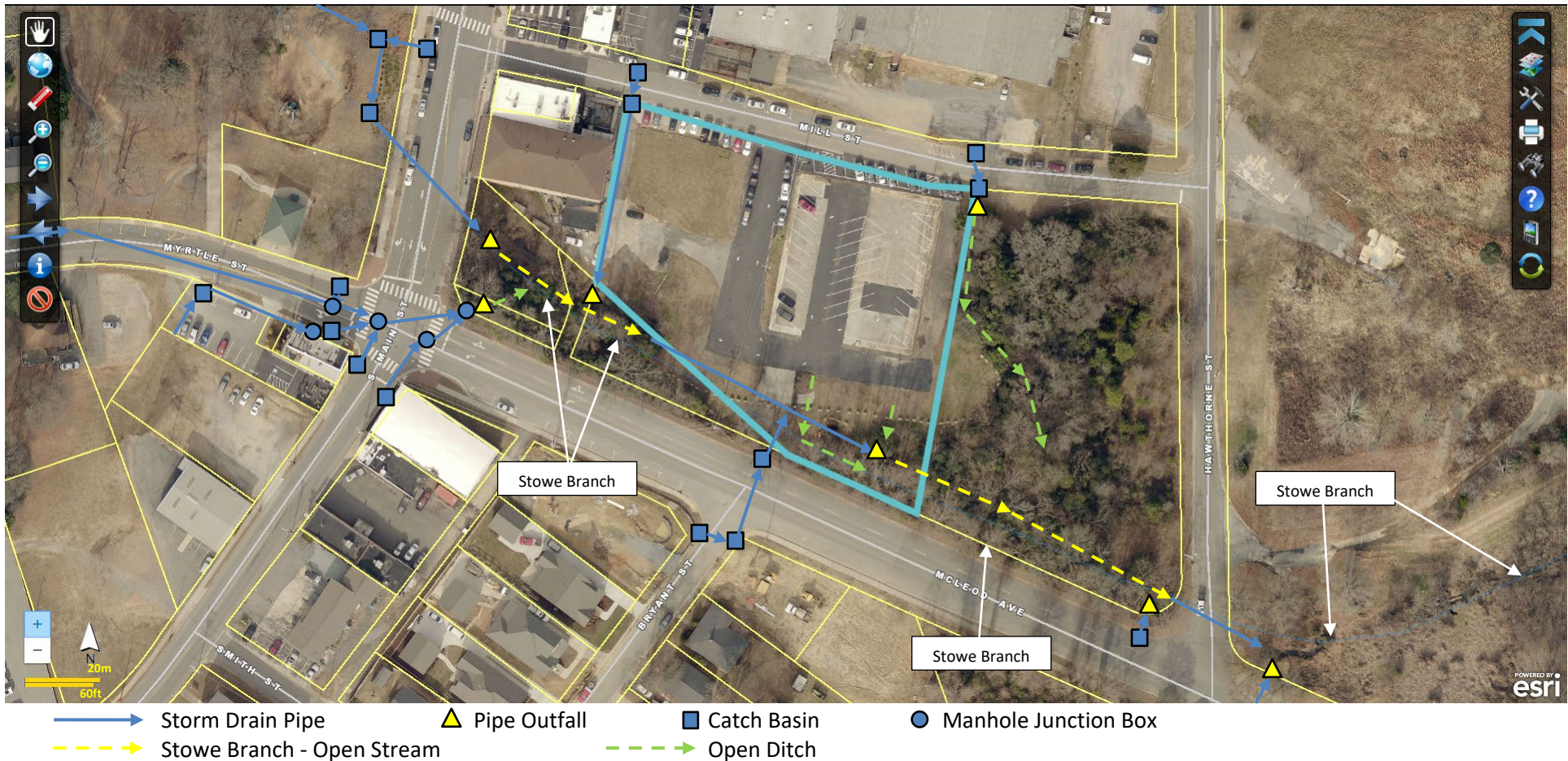


Site Map and Topography: Loftin Riverfront Park
 1400 E Catawba St, Belmont, NC 28012 – PID# 214172 & 224592

Site Map & Stormwater System

- *All locations of system elements (i.e. structures, ditches, channels, streams, etc.) are approximate*
- *Representation on this map does not indicate elements are the City of Belmont's responsibility*
- *Gaston County 2018 Pictometry*

City of Belmont – Stormwater Management



Site Map and Stormwater System: Mill St Parking Lot 8 Mill St, Belmont, NC 28012 – PID# 215798

Aerial Photo of Stormwater System

- *All locations of system elements (i.e. structures, ditches, channels, streams, etc.) are approximate*
- *Representation on this map does not indicate elements are the City of Belmont's responsibility*
- *Gaston County 2018 Pictometry*

City of Belmont – Stormwater Management



Site Map and Topography: Mill St Parking Lot
8 Mill St, Belmont, NC 28012 – PID# 215798

Aerial Photo of Stormwater System

- *All locations of system elements (i.e. structures, ditches, channels, streams, etc.) are approximate*
- *Representation on this map does not indicate elements are the City of Belmont’s responsibility*
- *Gaston County 2018 Pictometry*

City of Belmont – Stormwater Management



- | | | | | | |
|-------------|----------------------------|--------------------|-----------------------------------|----------|---------------|
| Storm Drain | Storm Manhole/Junction Box | Generator - Diesel | Muffin Monster Bar Screen/Grinder | Wet Well | Control Panel |
| RCP Pipe | Open Swale/Ditch | Stormwater Outfall | SCM Outlet Structure | | |

Site Map and Stormwater System: Morgans Branch Liftstation

701 Ardent Trail, Belmont, NC 28012 – PID# 223126

Aerial Photo of Stormwater System

All locations of system elements (i.e. structures, ditches, channels, streams, etc.) are approximate

Representation on this map does not indicate elements are the City of Belmont's responsibility

Gaston GIS 2018 Pictometry

City of Belmont – Stormwater Management



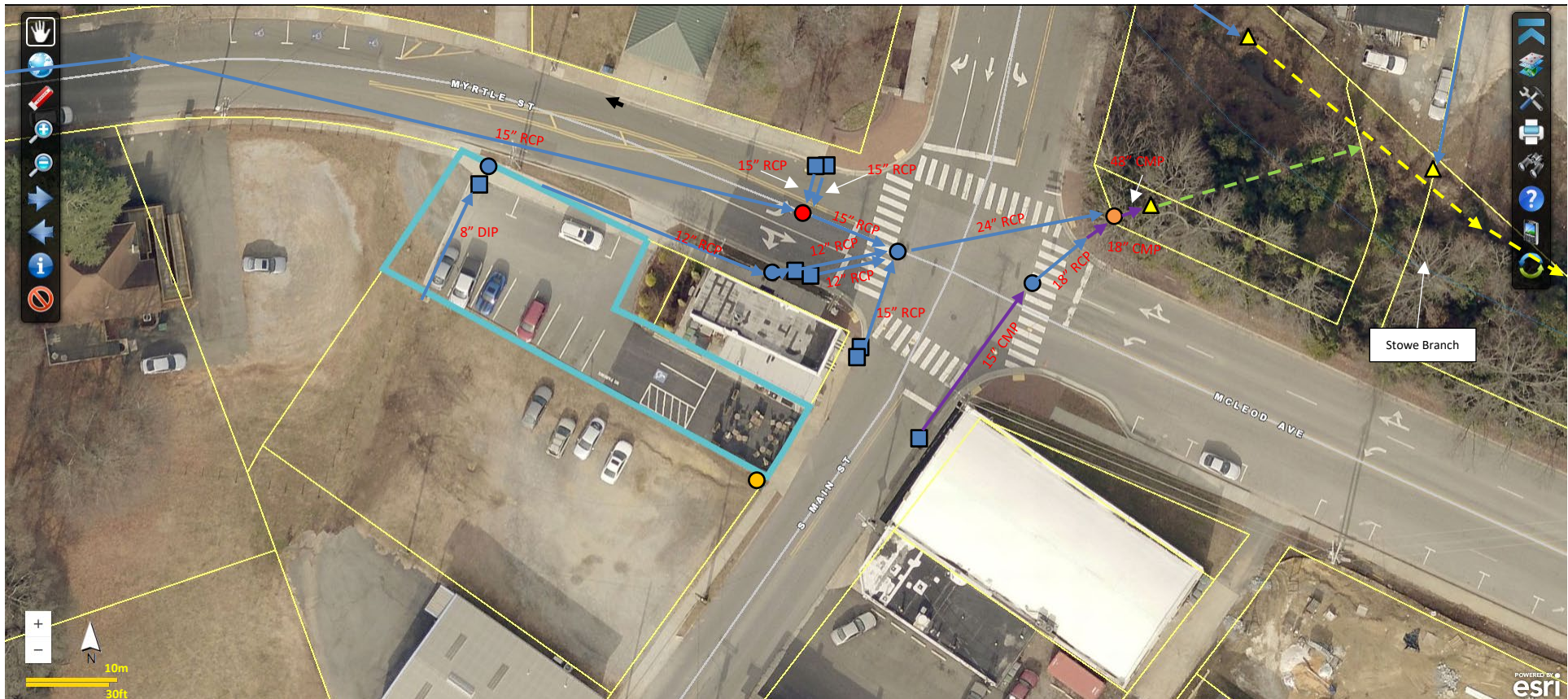
Site Map and Topography: Morgans Branch Liftstation

701 Ardent Trail, Belmont, NC 28012 – PID# 223126

Aerial Photo of Stormwater System

- *All locations of system elements (i.e. structures, ditches, channels, streams, etc.) are approximate*
- *Representation on this map does not indicate elements are the City of Belmont's responsibility*
- *Gaston GIS 2018 Pictometry*

City of Belmont – Stormwater Management



- RCP Pipe
- CMP Pipe
- Junction Manhole
- ▲ Pipe Outfall
- Catch Basin
- Trash/Recycling Container
- - - ► Stowe Branch – Open Stream
- - - ► Open Swale/Ditch
- Junction Box-No Access
- Junction/Drop Box – Slab Top

Site Map and Stormwater System: Myrtle St Parking Lot

Corner of S Main and Myrtle St, Belmont, NC 28012 – PID# 126639

Aerial Photo of Stormwater System

All locations of system elements (i.e. structures, ditches, channels, streams, etc.) are approximate

Representation on this map does not indicate elements are the City of Belmont’s responsibility

Gaston GIS 2018 Pictometry

City of Belmont – Stormwater Management



Site Map and Topography: Myrtle St Parking Lot
 Corner of S Main and Myrtle St, Belmont, NC 28012 – PID# 126639

Aerial Photo of Stormwater System

- *All locations of system elements (i.e. structures, ditches, channels, streams, etc.) are approximate*
- *Representation on this map does not indicate elements are the City of Belmont’s responsibility*
- *Gaston GIS 2018 Pictometry*

City of Belmont – Stormwater Management



- Storm Drain
- Trash/Recycling Containers
- RCP Pipe

Site Map and Stormwater System: N Main St Parking Lot A

37 N Main St, Belmont, NC 28012 – PID# 208268

Aerial Photo of Stormwater System

- *All locations of system elements (i.e. structures, ditches, channels, streams, etc.) are approximate*
- *Representation on this map does not indicate elements are the City of Belmont’s responsibility*
- *Gaston GIS 2018 Pictometry*

City of Belmont – Stormwater Management