



- |             |                            |                    |            |          |               |
|-------------|----------------------------|--------------------|------------|----------|---------------|
| Storm Drain | Storm Manhole/Junction Box | Generator - Diesel | Bar Screen | Wet Well | Control Panel |
| RCP Pipe    | Open Swale/Ditch           | Stormwater Outfall |            |          |               |

## Site Map and Stormwater System: South Ridge Liftstation

1802 South Ridge Dr, Belmont, NC 28012 – PID# 188200

### Aerial Photo of Stormwater System

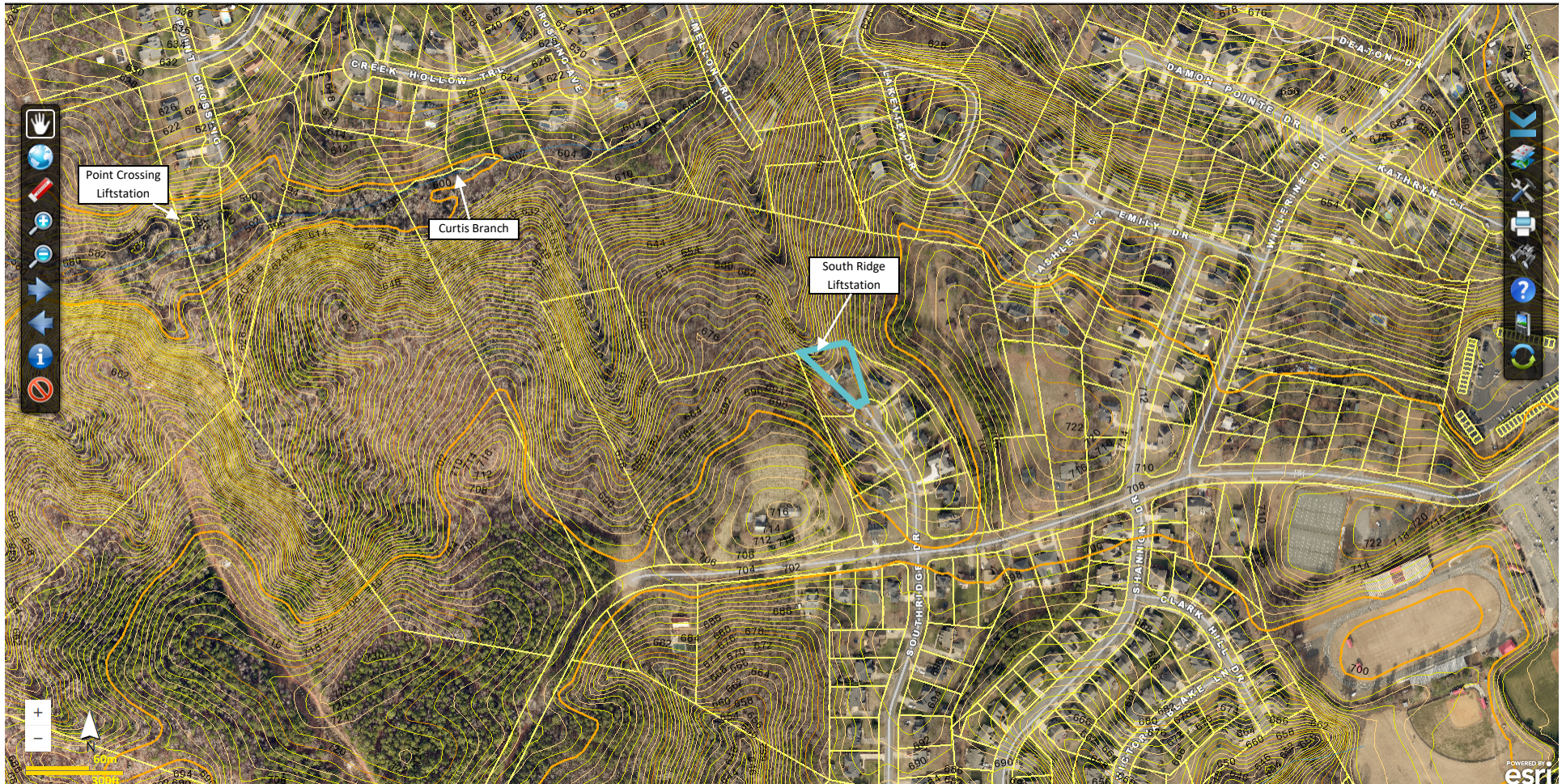
\*All locations of system elements (i.e. structures, ditches, channels, streams, etc.) are approximate\*

\*Representation on this map does not indicate elements are the City of Belmont's responsibility\*

\*Gaston GIS 2018 Pictometry\*

City of Belmont – Stormwater Management





## Site Map and Topography: South Ridge Liftstation

1802 South Ridge Dr, Belmont, NC 28012 – PID# 188200

### Aerial Photo of Stormwater System

\*All locations of system elements (i.e. structures, ditches, channels, streams, etc.) are approximate\*

\*Representation on this map does not indicate elements are the City of Belmont's responsibility\*

\*Gaston GIS 2018 Pictometry\*

City of Belmont – Stormwater Management





- |             |                            |                    |                                   |          |               |
|-------------|----------------------------|--------------------|-----------------------------------|----------|---------------|
| Storm Drain | Storm Manhole/Junction Box | Generator - Diesel | Muffin Monster Bar Screen/Grinder | Wet Well | Control Panel |
| RCP Pipe    | Open Swale/Ditch           | Stormwater Outfall | SCM Outlet Structure              |          |               |

## Site Map and Stormwater System: South Shore Liftstation

228 Seven Oaks Landing, Belmont, NC 28012 – PID# 224174

### Aerial Photo of Stormwater System

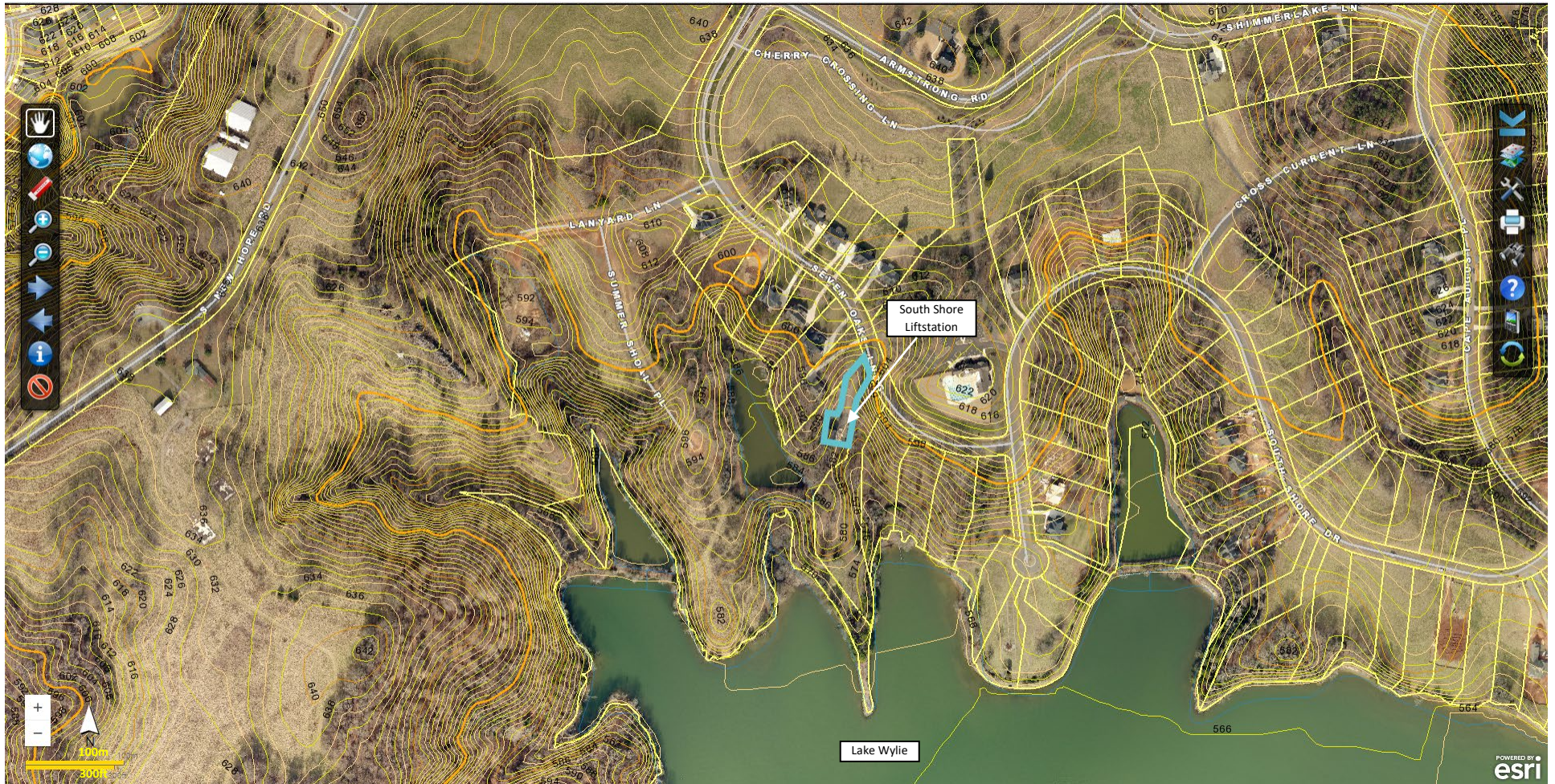
City of Belmont – Stormwater Management

\*All locations of system elements (i.e. structures, ditches, channels, streams, etc.) are approximate\*

\*Representation on this map does not indicate elements are the City of Belmont's responsibility\*

\*Gaston GIS 2018 Pictometry\*





## Site Map and Topography: South Shore Liftstation

228 Seven Oaks Landing, Belmont, NC 28012 – PID# 224174

### Aerial Photo of Stormwater System

\*All locations of system elements (i.e. structures, ditches, channels, streams, etc.) are approximate\*

\*Representation on this map does not indicate elements are the City of Belmont's responsibility\*

\*Gaston GIS 2018 Pictometry\*

City of Belmont – Stormwater Management





- |             |                                 |                    |            |          |               |
|-------------|---------------------------------|--------------------|------------|----------|---------------|
| Storm Drain | Storm Manhole/Junction Box      | Generator - Diesel | Bar Screen | Wet Well | Control Panel |
| RCP Pipe    | Open Swale/Ditch/Unnamed Stream | Stormwater Outfall |            |          |               |

## Site Map and Stormwater System: Stowe Liftstation

2021 The Oaks Parkway, Belmont, NC 28012 – PID# 183168

### Aerial Photo of Stormwater System

\*All locations of system elements (i.e. structures, ditches, channels, streams, etc.) are approximate\*

\*Representation on this map does not indicate elements are the City of Belmont's responsibility\*

\*Gaston GIS 2018 Pictometry\*

City of Belmont – Stormwater Management





## Site Map and Topography: Stowe Liftstation

2021 The Oaks Parkway, Belmont, NC 28012 – PID# 183168

### Aerial Photo of Stormwater System

\*All locations of system elements (i.e. structures, ditches, channels, streams, etc.) are approximate\*

\*Representation on this map does not indicate elements are the City of Belmont's responsibility\*

\*Gaston GIS 2018 Pictometry\*

City of Belmont – Stormwater Management





## Site Map and Stormwater System: Stowe Park

24 S Main St, Belmont, NC 28012 – PID# 125858 & 125855

### Site Map & Stormwater System

City of Belmont – Stormwater Management

\*All locations of system elements (i.e. structures, ditches, channels, streams, etc.) are approximate\*

\*Representation on this map does not indicate elements are the City of Belmont's responsibility\*

\*Gaston County 2018 Pictometry\*





## Site Map and Topography: Stowe Park

24 S Main St, Belmont, NC 28012 – PID# 125858 & 125855

### Site Map & Stormwater System

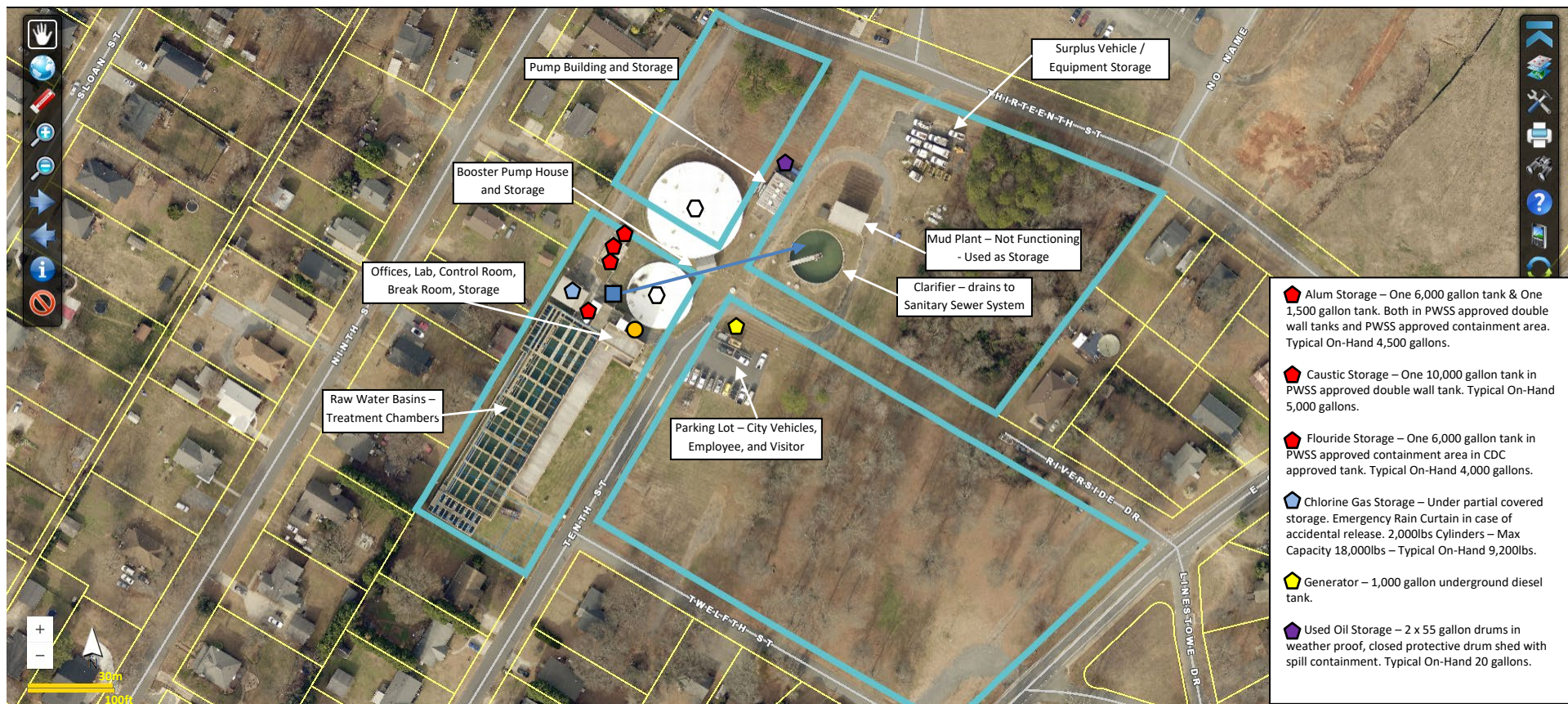
\*All locations of system elements (i.e. structures, ditches, channels, streams, etc.) are approximate\*

\*Representation on this map does not indicate elements are the City of Belmont's responsibility\*

\*Gaston County 2018 Pictometry\*

City of Belmont – Stormwater Management





## Site Map and Stormwater System: Water Treatment Plant

### 205 Tenth St, Belmont, NC 28012 – PID# 186526

#### Aerial Photo of Stormwater System

\*All locations of system elements (i.e. structures, ditches, channels, streams, etc.) are approximate\*

\*Representation on this map does not indicate elements are the City of Belmont's responsibility\*

\*Gaston GIS 2018 Pictometry\*

City of Belmont – Stormwater Management





## Site Map and Topography: Water Treatment Plant

205 Tenth St, Belmont, NC 28012 – PID# 186526

### Aerial Photo of Stormwater System

\*All locations of system elements (i.e. structures, ditches, channels, streams, etc.) are approximate\*

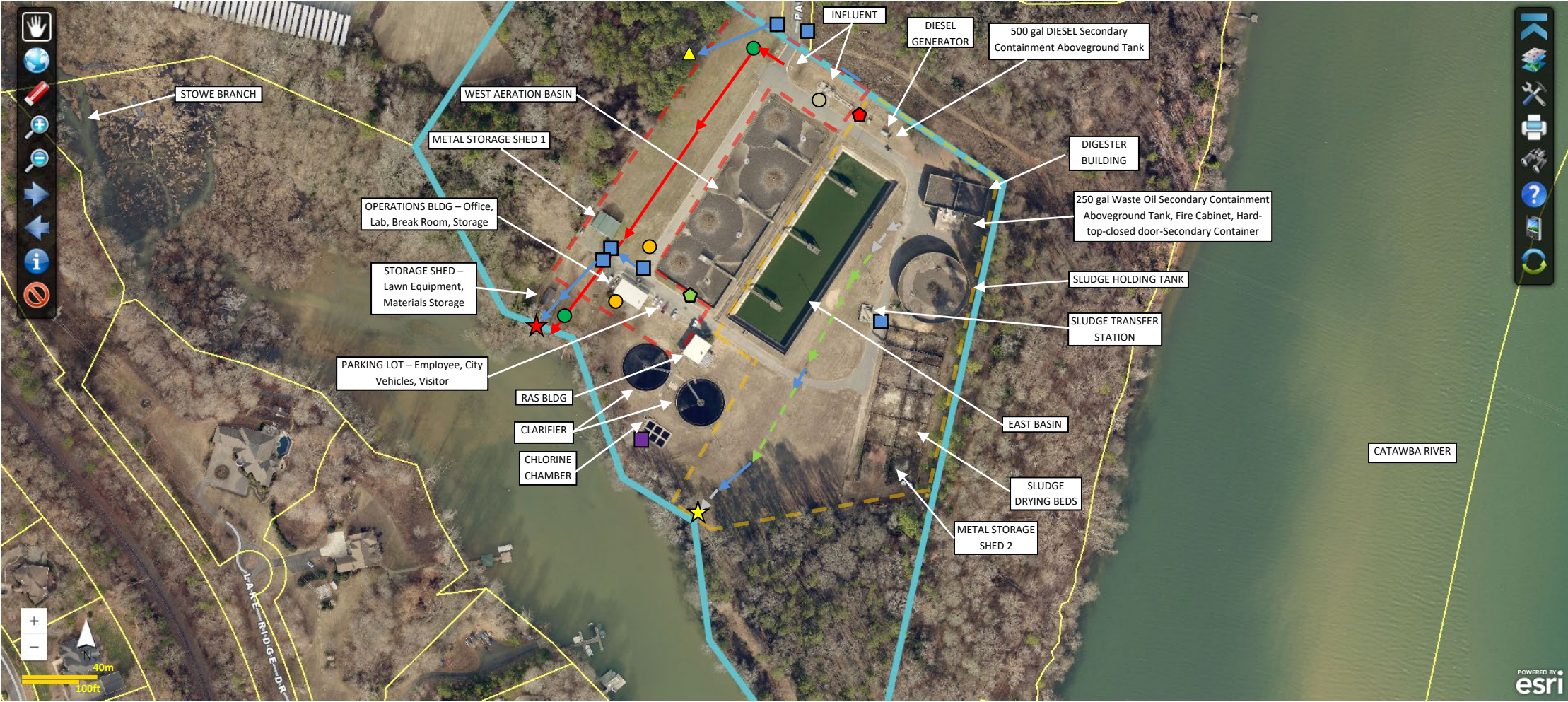
\*Representation on this map does not indicate elements are the City of Belmont's responsibility\*

\*Gaston GIS 2018 Pictometry\*

City of Belmont – Stormwater Management



**APPENDIX B - FIGURE 3 - SITE, STORMWATER SYSTEM, & TOPOGRAPHY MAP**  
WASTEWATER TREATMENT PLANT - CITY OF BELMONT – 298 Parkdale Dr, Belmont, NC 28012 – PID# 127177



- |                                   |                                   |   |                                |                      |
|-----------------------------------|-----------------------------------|---|--------------------------------|----------------------|
| ■ Storm Drain/Catch Basin         | ---> Open Vegetated Channel/Swale | ★ Outfall No. 001                         | --- Drainage Area/Boundary 001 |                      |
| ▲ Parkdale Dr Outfall             | → Stormwater Pipe/Culvert         | ★ Outfall No. 002                         | --- Drainage Area/Boundary 002 | ---> Rip-Rap Channel |
| ■ Sulfur Dioxide Storage Building | ● Caustic Soda Storage Tank       | → Abandoned Influent Overflow Bypass Pipe | ● Abandoned Manhole            |                      |
| ● Trash/Recycling Containers      | ○ Trash Dumpster                  | ● Settling Agent Drums & Applicator       |                                |                      |

**UPDATED August 2019**

Based on Gaston County GIS, 2018 Pictometry \*\*All added structure locations are approximate\*\*



**APPENDIX B - FIGURE 3 - SITE, STORMWATER SYSTEM, & TOPOGRAPHY MAP**  
WASTEWATER TREATMENT PLANT - CITY OF BELMONT – 298 Parkdale Dr, Belmont, NC 28012 – PID# 127177



**UPDATED August 2019**

Based on Gaston County GIS, 2018 Pictometry \*\*All added structure locations are approximate\*\*



**Appendix J**

**Total Maximum Daily Loads (TMDL) Program**



# **CITY OF BELMONT TOTAL MAXIMUM DAILY LOAD (TMDL) PROGRAM**

## **Table of Contents**

1	Objectives and BMPs	1
2	Map Exhibits: Streams, Outfalls, City Facility General Locations Map – City Facility General Locations and Streams Maps	J.1



## Total Maximum Daily Loads (TMDLs)

### 1. Objective

- a. Determine whether a TMDL has been developed and approved or established by EPA for the receiving water(s) of the MS4 stormwater discharge and/or downstream waters into which the receiving water directly flows.
- b. Develop and implement BMPs to reduce non-point source pollutant loading to the maximum extent practicable (MEP) if the permittee is or becomes subject to an approved TMDL with an approved Waste Load Allocation (WLAs) assigned to stormwater.
- c. If subject to an approved TMDL, the permittee is in compliance with the TMDL if the permittee complies with the conditions of this permit, including developing and implementing appropriate BMPs to reduce non-point source pollutant loading to the maximum extent practicable (MEP). While improved water quality is the expected outcome, the NPDES MS4 permit obligation is to reduce non-point source pollutant loading to the maximum extent practicable (MEP). The MS4 permittee is not responsible for attaining water quality standards (WQS) at the ambient monitoring stations. The Division expects attaining WQS will only be achieved through reduction from the MS4, along with reductions from other nonpoint source contributors.

### 2. Best Management Practices (BMPs)

At any time during the effective dates of this permit, if the permittee is or becomes subject to an approved TMDL with an approved Waste Load Allocation (WLAs) assigned to stormwater, the permittee shall implement the following BMPs to reduce non-point source pollutant loading to the maximum extent practicable (MEP)

BMP	Measurable Goals
<p>a. Determine whether a TMDL has been developed and approved or established by EPA for the receiving water(s) of the MS4 stormwater discharge and/or downstream waters into which the receiving water directly flows.</p>	<p><b>Lake Wylie TMDL Nutrient Management</b></p> <ul style="list-style-type: none"> <li>• Pollutant: Total Phosphorus, Total Nitrogen</li> <li>• Assessment Units: none listed</li> <li>• EPA Approved: 2-5-96</li> <li>• In 1995 a TMDL for chlorophyll a was developed for Lake Wylie. TMDL does <u>not</u> have an approved WLA assigned to stormwater/non-point sources.</li> <li>• TMDL does have an approved WLA assigned to point-source pollutants. The Wastewater Treatment Plant (WWTP) has Total Phosphorus and Total Nitrogen discharge limits set under its individual NPDES Permit NCG110023. Pretreatment Inspections, Testing, and Cleaning Schedules for two industries, and all restaurants and car washes connected to the sanitary sewer system are performed, scheduled, and monitored by the Wastewater Pretreatment Division to ensure that acceptable levels of Phosphates, Nitrogen, BOD, grease, etc. are entering the WWTP.</li> </ul> <p><b>Statewide Mercury TMDL</b></p> <ul style="list-style-type: none"> <li>• Pollutant: Mercury</li> <li>• Assessment Units: none listed</li> <li>• EPA Approved: 2012</li> <li>• In 2012, NCDENR developed a statewide mercury TMDL to determine how wastewater discharges, in-state air sources, and out-of-state air sources contribute to the surface water mercury load. This TMDL acknowledged that most mercury in stormwater comes from atmospheric</li> </ul>



	deposition and that concentrations in stormwater are typically within the same range as mercury concentrations in rainwater, between zero and 10 ng/L. <u>No</u> MS4 NPDES WLA for mercury was assigned for this TMDL.
--	--

BMP	Measurable Goal
<b>b. Identify, describe and map watershed, outfalls, and streams</b>	<ul style="list-style-type: none"> <li>The City of Belmont is located on a peninsula in the southeast corner of Gaston County. The peninsula is bordered by the Catawba River/Lake Wylie on the east and by the South Fork Catawba River on the west. The eastern half of the peninsula drains to the Catawba River/Lake Wylie. The western half of the peninsula drains to the South Fork Catawba River.</li> <li>The MS4 drains to tributaries to, or directly to, the Catawba River, Lake Wylie, and/or South Fork Catawba River.</li> <li>See Stormwater Atlas and Stream Map.</li> </ul>
<b>c. Existing Measures</b>	<ul style="list-style-type: none"> <li>Since 1995 areas within the eastern half of the peninsula, on which City of Belmont is located, have been subject to the Water Supply Watershed (WSIV CA &amp; WSIV PA) rules. The WSIV ordinance requires new development and redevelopment, that reach Built Upon Area (BUA) criteria, to install stormwater BMPs such as Water Quality Basins, permeable pavement, bio-retention cells, etc. See Watershed Ordinance.</li> <li>Since 2007 all other areas, not located within WSIV, are subject to the Stormwater Ph 2 rules, under the adopted Gaston County Stormwater Ordinance. Non-Incorporated Areas are also subject to the Gaston County Stormwater Ordinance, which is enforced by Gaston Natural Resources. See Stormwater Ordinance.</li> <li>Since 2003 all areas have been subject to the Gaston County Erosion and Sedimentation Control Ordinance, which is enforced by Gaston Natural Resources. See E&amp;SC Ordinance.</li> <li>The City of Belmont staff works closely with Gaston Natural Resources on all Post-Construction SWPh2 requirements.</li> <li>The City of Belmont staff works closely with Gaston Natural Resources on all E&amp;SC requirements and reports issues, failures, concerns, and complaints promptly to ensure corrective action is taken.</li> </ul>



BMP	Measurable Goal
<p><b>d. Tailor and/or Expand Existing BMPs within the six minimum measures to enhance water quality recovery</b></p>	<ol style="list-style-type: none"> <li>1. <b>Public Education and Outreach</b> – Spotlight erosion and sedimentation control, lawn care and disposal of yard waste, and illicit discharges in educational materials and at educational events to inform citizens of the negative impacts total phosphorus and total nitrogen can have on water quality. Promote the Stormwater hotline/helpline and encourage citizens to report observed or suspected pollution.</li> <li>2. <b>Public Involvement and Participation</b> – maintain the volunteer storm drain labeling program with efforts to increase participation. Promote the Stormwater hotline/helpline and encourage citizens to report observed or suspected pollution. Recommend to the Stormwater Committee starting a Volunteer Stream Clean-Up or Adopt-A-Stream Program.</li> <li>3. <b>Illicit Discharge Detection and Elimination (IDDE)</b> – maintain the IDDE Program with effort to increase the number of stream walks and system inspections to find and eliminate illicit discharges and/or connections. Promote the Stormwater hotline/helpline and encourage citizens to report observed or suspected pollution.</li> <li>4. <b>Construction Site Runoff Controls</b> – Maintain construction site inspections and reporting to Gaston Natural Resources. Gaston Natural Resources permits and enforces the E&amp;SC Ordinance.</li> <li>5. <b>Post-Construction Site Runoff Controls</b> – maintain the current program and ensure that new development, and redevelopment, subject to Stormwater Ph 2 Rules or WSIV Rules are following through with approved plans, BMP inspection and maintenance, and annual reporting.</li> <li>6. <b>Pollution Prevention and Good Housekeeping for Municipal Operations</b> – Maintain and evaluate Facility Stormwater Pollution Prevention Plans (SWPPPs) to work better for each unique facility. Maintain Street Sweeping Program.</li> <li>7. <b>Total Maximum Daily Loads (TMDLs)</b> – monitor NCDWQ List of Approved TMDLs to stay abreast of any new TMDLs that the City of Belmont may become subject to. Update annually.</li> </ol>



**Appendix J.1**

**Exhibit Stream and Outfall Map**





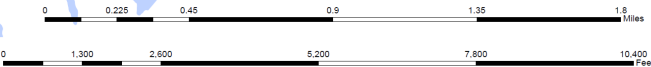
**CITY OF BELMONT  
NORTH CAROLINA**

**STREAMS  
& OUTFALLS**

	MAJOR OUTFALL
	ABBAY CREEK
	STOWE BRANCH & TRIBUTARY
	NANCY HANKS BRANCH
	FITES CREEK
	FITES CREEK TRIBUTARY 1 & 1A
	SOUTH FORK CATAWBA RIVER TRIBUTARY 2
	HALLS ROCKY BRANCH
	CURTIS BRANCH
	KITTYS BRANCH
	UNNAMED STREAM



1 inch = 900 feet







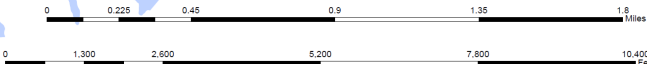
**CITY OF BELMONT  
NORTH CAROLINA**

**STREAMS, OUTFALLS, CITY  
FACILITY GENERAL  
LOCATIONS**

	MAJOR OUTFALL
	ABBEY CREEK
	STOWE BRANCH & TRIBUTARY
	NANCY HANKS BRANCH
	FITES CREEK
	FITES CREEK TRIBUTARY 1 & 1A
	SOUTH FORK CATAWBA RIVER TRIBUTARY 2
	HALLS ROCKY BRANCH
	CURTIS BRANCH
	KITTYS BRANCH
	UNNAMED STREAM
	CITY HALL / PLANNING & ZONING
	PARKS & RECREATION
	POLICE DEPARTMENT
	BELMONT FIRE DEPARTMENT
	WATER TREATMENT PLANT
	WASTE WATER TREATMENT PLANT
	PUBLIC WORKS
	SOUTH POINT FIRE DEPARTMENT
	LOFTIN RIVER PARK
	FRADY-CRESCENT PARK
	GANTT PARK
	RODDEN BALLFIELD
	STOWE PARK
	DAVIS PARK
	ROCKY BRANCH MTB PARK
	REID PARK
	LINFORD PARK
	OAK ST STAND PIPE
	HAGER ST WATER TOWER
	ACME RD WATER TOWER
	PEBBLE CREEK LIFTSTATION
	CASON LIFTSTATION
	DUNCAN LIFTSTATION
	STOWE LIFTSTATION
	ABBEE PLACE LIFTSTATION
	LINCOLN LIFTSTATION
	CLAY LIFTSTATION
	HALL LIFTSTATION
	DIXIE LIFTSTATION
	RANKIN LIFTSTATION
	POINT CROSSING LIFTSTATION
	SOUTHRIDGE LIFTSTATION
	SOUTH POINT RIDGE LIFTSTATION
	BELMONT TOWN CENTER LIFTSTATION
	PINSTO LIFTSTATION
	BELLEMEADE LIFTSTATION
	GRAYSTONE LIFTSTATION
	MORGANS BRANCH LIFTSTATION
	LAKE POINT LIFTSTATION
	REFLECTION POINT LIFTSTATION
	OVERLAKE LIFTSTATION
	CONSERVANCY LIFTSTATION
	SOUTH SHORE LIFTSTATION



1 inch = 900 feet





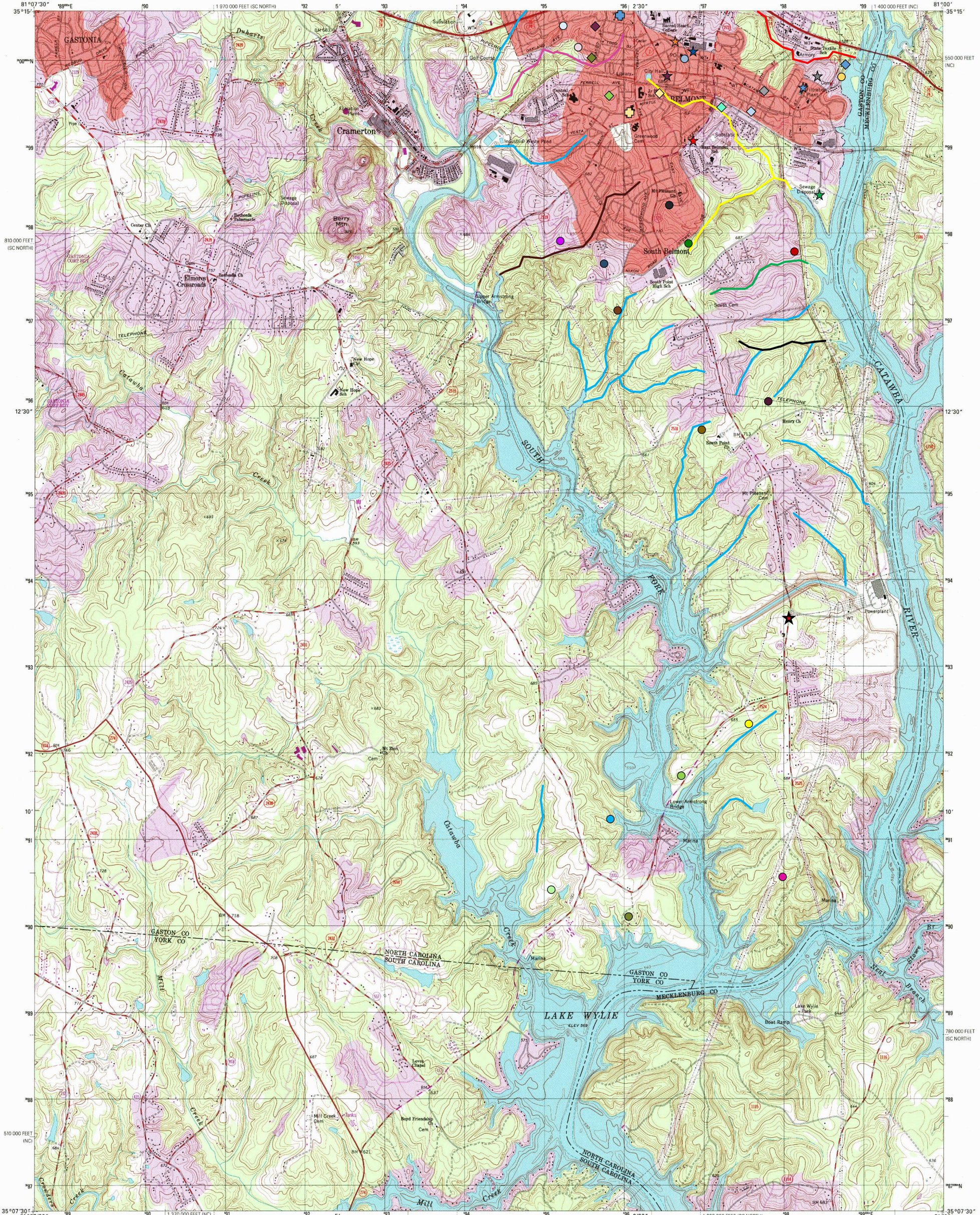


U.S. DEPARTMENT OF THE INTERIOR  
U.S. GEOLOGICAL SURVEY

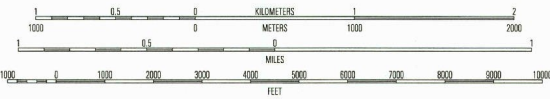
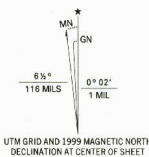


STATE OF NORTH CAROLINA  
DEPARTMENT OF ENVIRONMENT AND NATURAL RESOURCES  
DIVISION OF LAND RESOURCES  
NORTH CAROLINA GEOLOGICAL SURVEY

BELMONT QUADRANGLE  
NORTH CAROLINA-SOUTH CAROLINA  
7.5-MINUTE SERIES (TOPOGRAPHIC)



Produced by the United States Geological Survey  
Topography compiled 1973. Planimetry derived from imagery taken 1993 and other sources. Photosinspected using imagery taken 1997; no major culture or drainage changes observed. PLSS and survey control current as of 1973. Boundaries, other than corporate, verified 1999  
North American Datum of 1927 (NAD 27)  
Projection: North Carolina coordinate system (Lambert conformal conic)  
10 000-foot ticks: North Carolina coordinate system, and South Carolina coordinate system, north zone 1000-meter Universal Transverse Mercator grid, zone 17  
North American Datum of 1983 (NAD 83) is shown by dashed corner ticks. The values of the shift between NAD 27 and NAD 83 for 7.5-minute intersections are obtainable from National Geodetic Survey NADCON software  
Information shown in purple may not meet USGS content standards and may conflict with previously mapped contours



SCALE 1:24 000  
CONTOUR INTERVAL 10 FEET  
NATIONAL GEODETIC VERTICAL DATUM OF 1929  
TO CONVERT FROM FEET TO METERS, MULTIPLY BY 0.3048



QUADRANGLE LOCATION

1	2	3
4	5	6
7	8	9

1 Gastonia North  
2 Mount Holly  
3 Mountain Island Lake  
4 Gastonia South  
5 Charlotte West  
6 Clover  
7 Lake Wylie  
8 Fort Mill

ADJOINING 7.5' QUADRANGLE NAMES

ROAD CLASSIFICATION  
Primary highway  
hard surface .....  
Secondary highway  
hard surface .....  
Light-duty road, hard or  
improved surface .....  
Unimproved road .....  
Interstate Route  
U.S. Route  
State Route

RECEIVED  
APR 3 2000  
USGS MIND  
HISTORICAL MAP ARCHIVES

BELMONT, NC-SC  
1997  
NIMA 4754 II NE-SERIES V842



### CITY OF BELMONT—CITY FACILITY GENERAL LOCATIONS AND STREAMS—UPDATED: OCTOBER 2018

★ CITY HALL / PLANNING & ZONING	◆ FRADY-CRESCENT PARK	⊕ HAGER ST WATER TOWER	● HALL LIFTSTATION	● GRAYSTONE LIFTSTATION	■ NANCY HANKS BRANCH
★ PARKS & RECREATION	◆ GANTT PARK	⊕ ACME RD WATER TOWER (NOT SHOWN)	● DIXIE LIFTSTATION	● MORGANS BRANCH LIFTSTATION	■ FITES CREEK (NOT SHOWN)
★ POLICE DEPARTMENT	◆ RODDEN BALLFIELD	● PEBBLE CREEK LIFTSTATION (NOT SHOWN)	● RANKIN LIFTSTATION	● LAKE POINT LIFTSTATION	■ FITES CREEK TRIBUTARY 1 & 1A (NOT SHOWN)
★ BELMONT FIRE DEPARTMENT	◆ STOWE PARK	● CASON LIFTSTATION (NOT SHOWN)	● POINT CROSSING LIFTSTATION	● REFLECTION POINT LIFTSTATION	■ SOUTH FORK CATAWBA RIVER TRIBUTARY 2 (NOT SHOWN)
★ WATER TREATMENT PLANT	◆ DAVIS PARK	● DUNCAN LIFTSTATION (NOT SHOWN)	● SOUTHRIDGE LIFTSTATION	● OVERLAKE LIFTSTATION	■ HALLS ROCKY BRANCH
★ WASTE WATER TREATMENT PLANT	◆ ROCKY BRANCH MTB PARK	○ STOWE LIFTSTATION (NOT SHOWN)	● SOUTH POINT RIDGE LIFTSTATION	● CONSERVANCY LIFTSTATION	■ CURTIS BRANCH
★ PUBLIC WORKS	◆ REID PARK	● ABBEY PLACE LIFTSTATION	● BELMONT TOWN CENTER LIFTSTATION	● SOUTH SHORE LIFTSTATION	■ KITTY'S BRANCH
★ SOUTH POINT FIRE DEPARTMENT	◆ UNFORD PARK (NOT SHOWN)	○ LINCOLN LIFTSTATION	● PINSTO LIFTSTATION	■ ABBEY CREEK	■ UNNAMED STREAM
◆ LOFTIN RIVER PARK	⊕ OAK ST STAND PIPE	○ CLAY LIFTSTATION	● BELLEMEADE LIFTSTATION	■ STOWE BRANCH & TRIBUTARY	