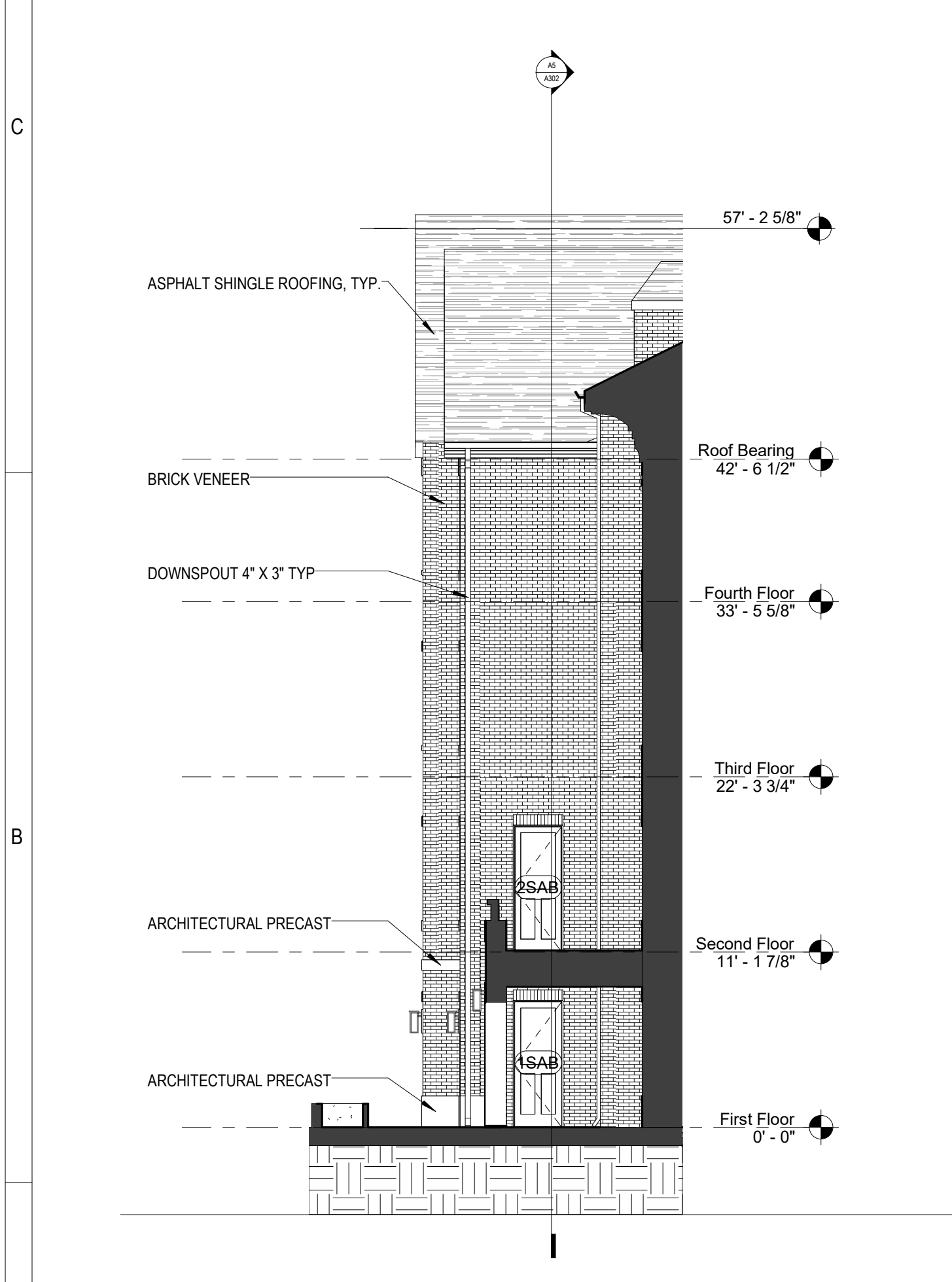
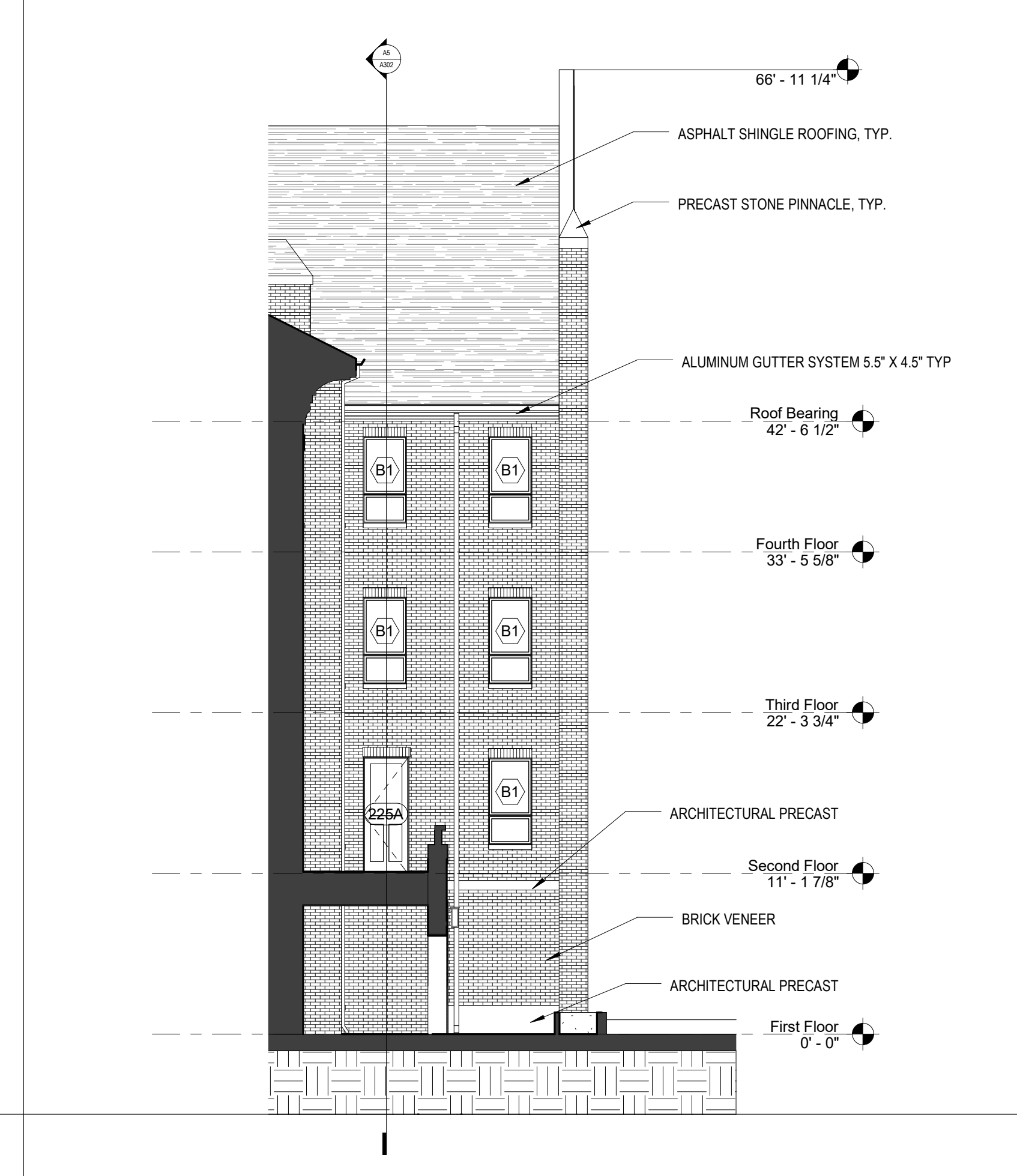


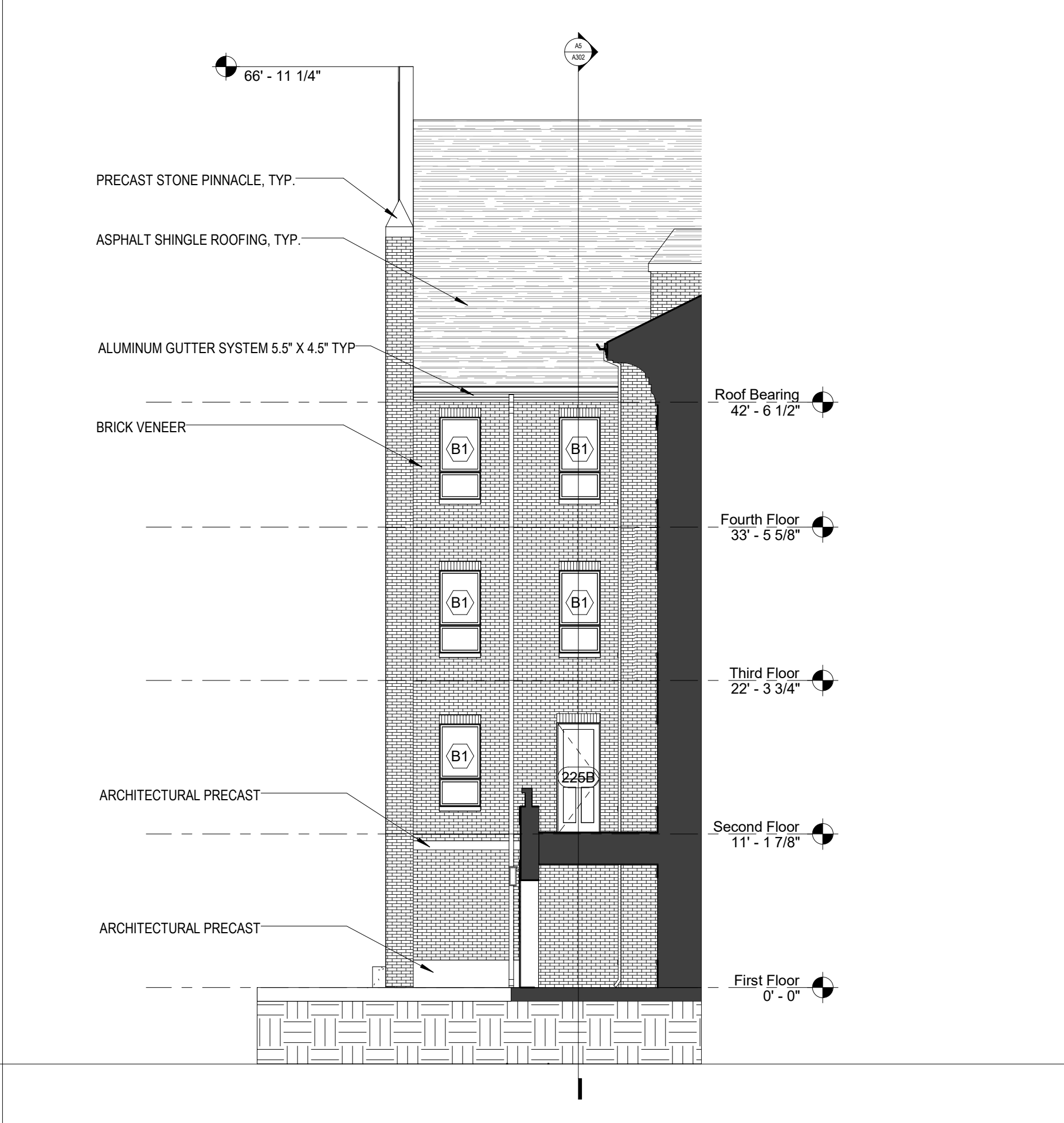
**C5 ELEVATION - SOUTHEAST**  
A201 SCALE: 1/8" = 1'-0"



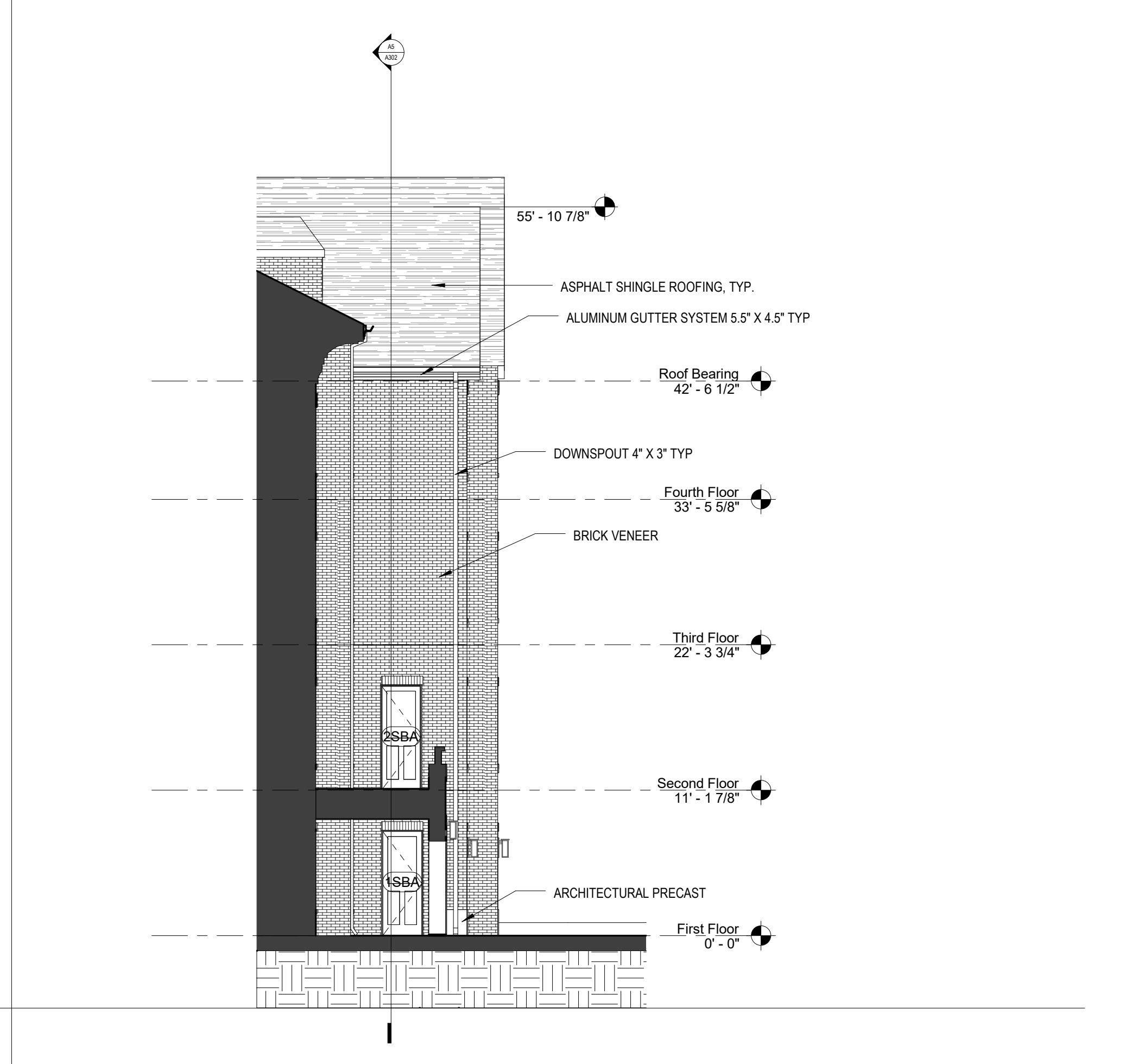
**A5 ELEVATION - FRONT WALKWAY 1**  
A201 SCALE: 1/8" = 1'-0"



**A4 ELEVATION - FRONT WALKWAY 2**  
A201 SCALE: 1/8" = 1'-0"



**A3 ELEVATION - FRONT WALKWAY 3**  
A201 SCALE: 1/8" = 1'-0"



**A2 ELEVATION - FRONT WALKWAY 4**  
A201 SCALE: 1/8" = 1'-0"



161 North 4th Street  
Columbus, OH 43215  
866.675.7584  
www.mkcinc.com

CONSULTANTS  
Civil Engineer  
**ISAACS**  
CIVIL ENGINEERING DESIGN AND LAND SURVEYING

MEP  
**KE**  
KRAMER ENGINEERS

394 Oak Street  
Columbus, Ohio 43215  
614-233-6911

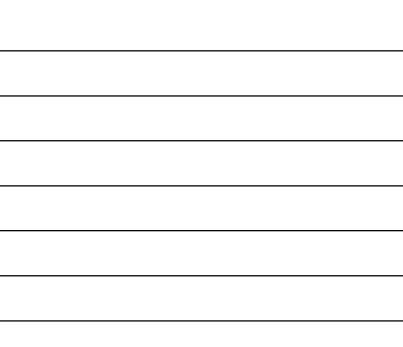
Structural  
**Fitzpatrick**  
ENGINEERING GROUP

1920 W. Catawba Avenue  
Suite 311  
Cornelius, NC 28031  
Phone: 704-987-9114

**BELMONT ABBEY HOUSING**  
**100 Belmont Mt Holly Rd, Belmont, NC 28012**  
UNIVERSITY HOUSING SOLUTIONS

**PRELIMINARY**  
**NOT FOR CONSTRUCTION**

SUBMITTED: NOVEMBER 23, 2021



**A201**  
EXTERIOR ELEVATIONS

MKC PROJECT: 21-028

1/12/2022 2:34:57 PM C:\Users\pkeller\Documents\Revit\Locals\2019\1-028\_Belmont Abbey Housing\_Backup\_Central\_pkeller\LG4.rvt



161 North 4th Street  
Columbus, OH 43215  
866.675.7584  
www.mkcinc.com

CONSULTANTS  
Civil Engineer  
**ISAACS**  
CIVIL ENGINEERING DESIGN AND LAND SURVEYING

MEP  
**KE**  
KRAMER ENGINEERS

394 Oak Street  
Columbus, Ohio 43215  
614-233-6911

Structural  
**Fitzpatrick**  
ENGINEERING GROUP  
1920 W. Catawba Avenue  
Suite 311  
Cornelius, NC 28031  
Phone: 704-987-9114

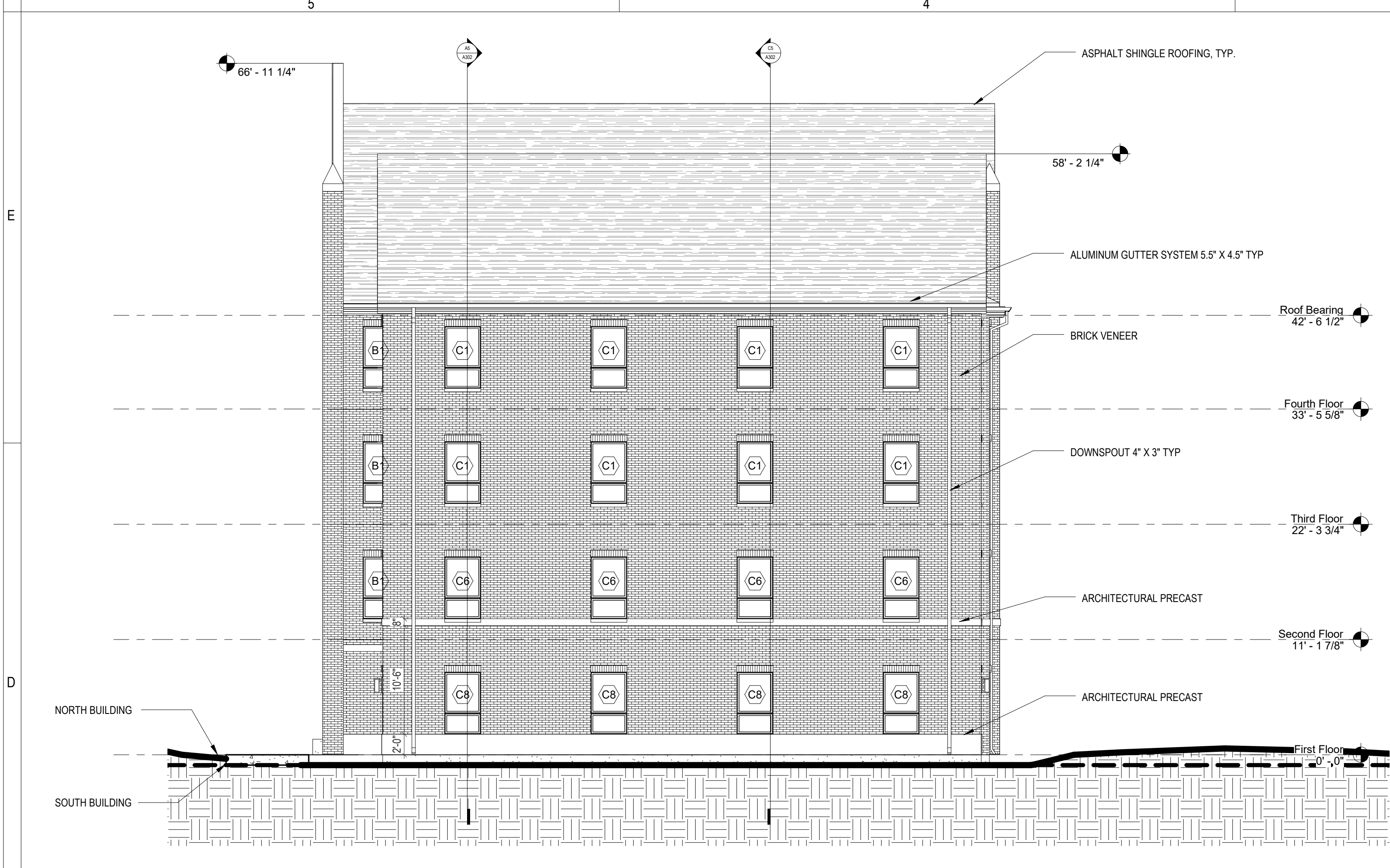
**BELMONT ABBEY HOUSING**  
**100 Belmont Mt Holly Rd, Belmont, NC 28012**  
UNIVERSITY HOUSING SOLUTIONS

**PRELIMINARY**  
**NOT FOR CONSTRUCTION**

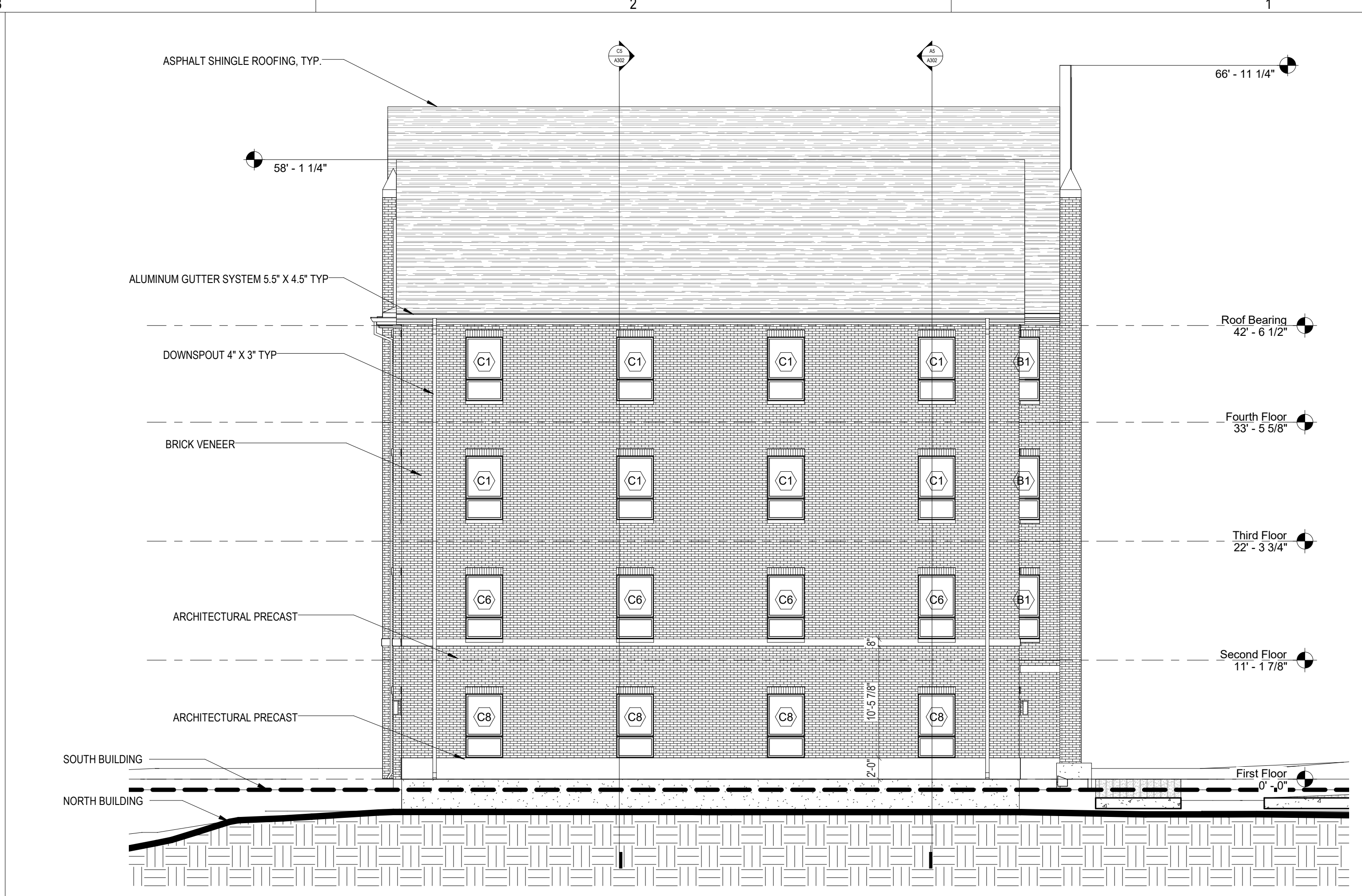
SUBMITTED: NOVEMBER 23, 2021

**A202**  
EXTERIOR ELEVATIONS

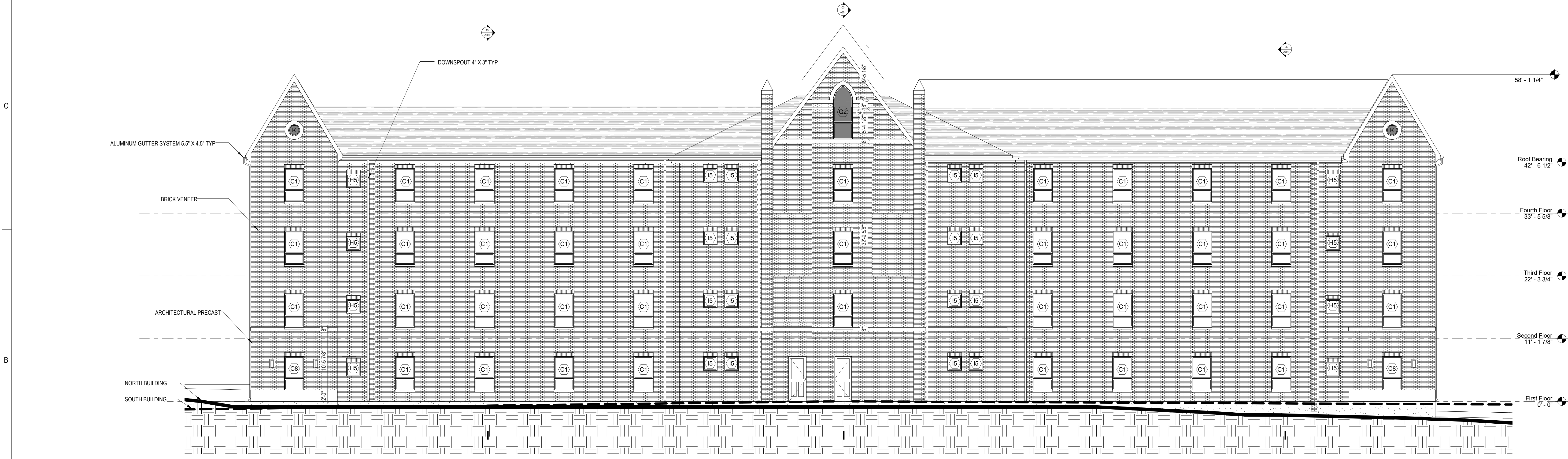
MKC PROJECT: 21-028



**D5 ELEVATION - NORTHEAST**  
A202 SCALE: 1/8" = 1'-0"



**D3 ELEVATION - SOUTHWEST**  
A202 SCALE: 1/8" = 1'-0"



**B5 ELEVATION - NORTHWEST**  
A202 SCALE: 1/8" = 1'-0"

1/12/2022 2:35:01 PM  
C:\Users\pkeller\Documents\Revit\Locals\2019\21-028\_Belmont Abbey Housing\_Backup\_Central\_pkeller\LG.M.rvt