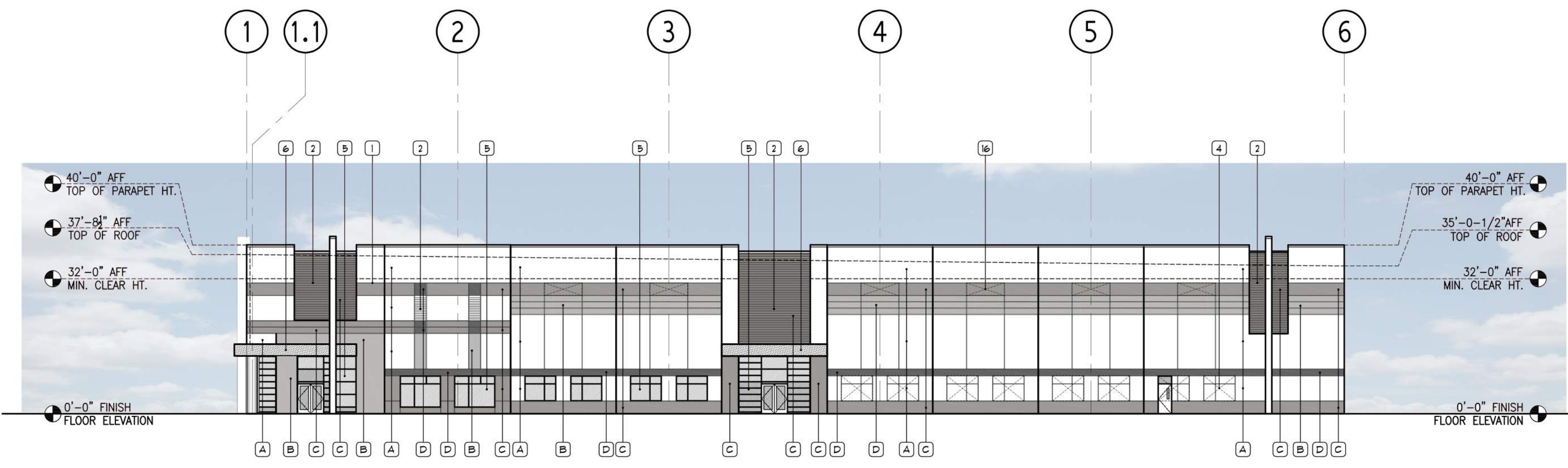
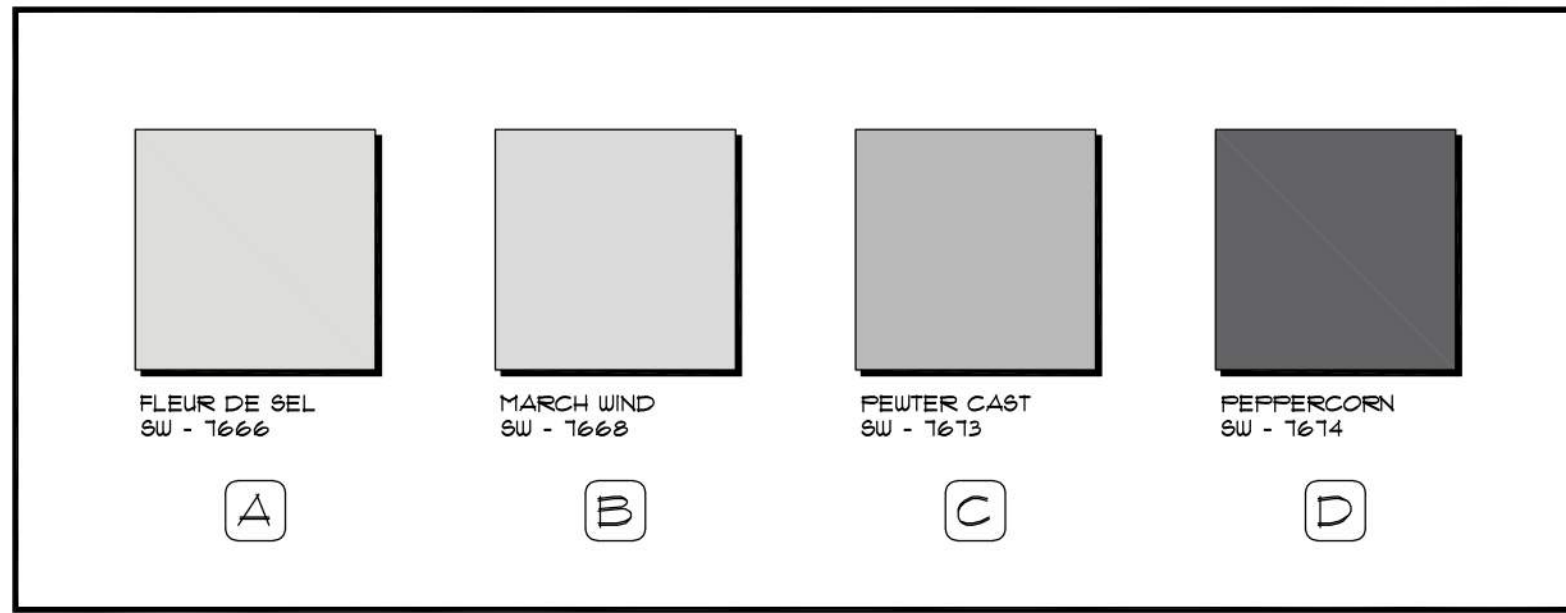


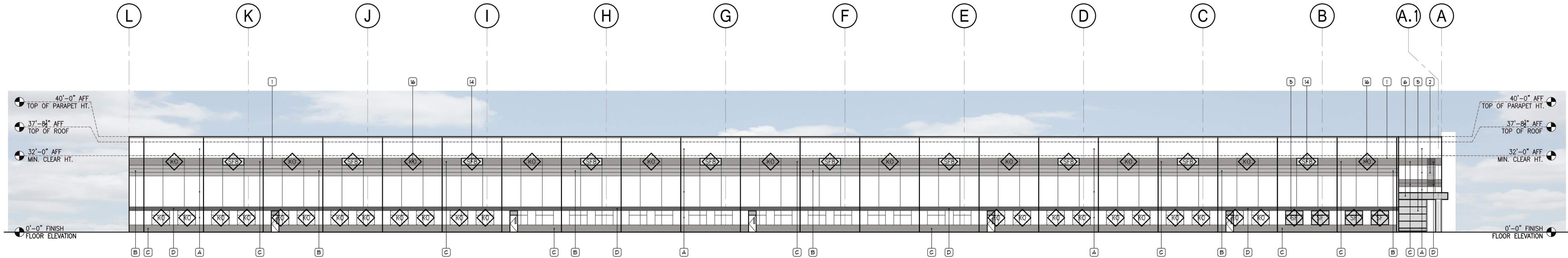
CLIENT:

SCALE:

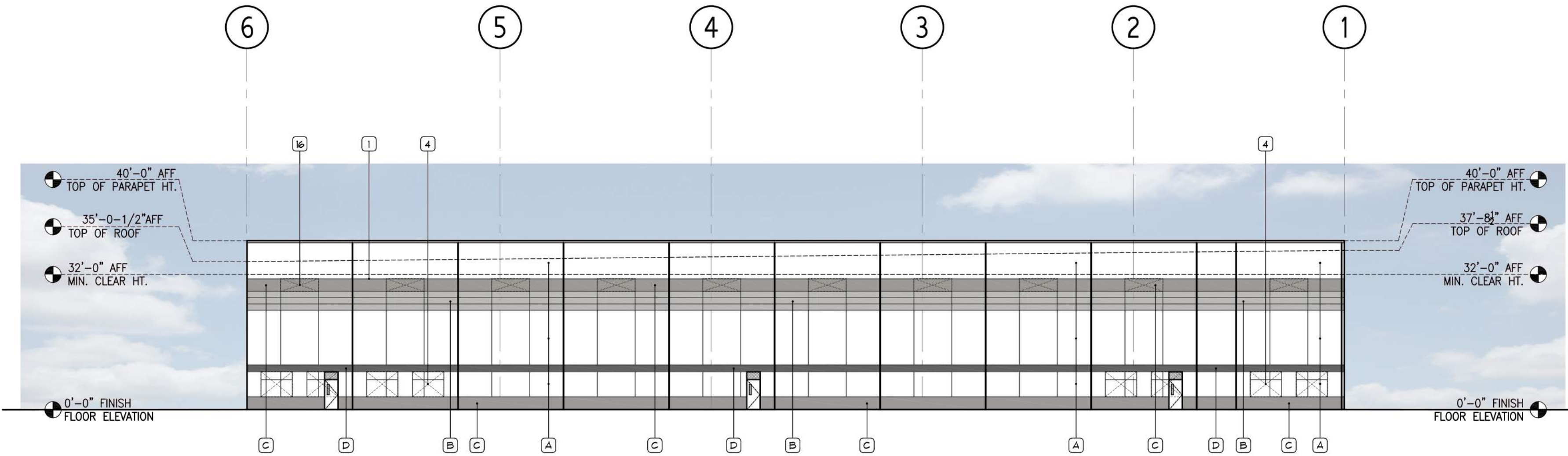
PAINT SWATCHES



1 OVERALL SHELL ELEVATION - SOUTH
 SCALE: 1" = 20'-0"



2 OVERALL SHELL ELEVATION - WEST
 SCALE: 1" = 20'-0"



3 OVERALL SHELL ELEVATION - PLAN NORTH
 SCALE: 1" = 20'-0"

KEYNOTES

- 1 GENERAL NOTE. ALL REVEALS & CHAMFER RUBSTICATION MUST TURN & ALL EXPOSED PANEL JAMBES & CONTIGUE TYP.
- 2 CONCRETE TILT-UP WALL PANELS WITH CORRUGATED FORM LINER PATTERN CAST INTO PANELS WHERE INDICATED. ALL WALL PANELS ARE TO BE PATCHED & GROUND SMOOTH PRIOR TO APPLICATION OF FINE TEXTURED PAINT SYSTEM. SAGE WALL COLOR AND ACCENT COLORS TO BE DETERMINED BY ARCHITECT.
- 3 PANEL OVERLAP (BEHIND)
- 4 KNOCK OUT PANELS FOR FUTURE WINDOW OPENINGS
- 5 INSULATED LOW-E TINTED GLASS STOREFRONT ENTRANCE SYSTEM
- 6 ACM CANOPY
- 7 NOT USED
- 8 GENERAL NOTE. STEEL STAIRS, HANDRAILS, LADDER AND CAGE TO BE PAINTED ENTIRELY WITH RUBST. INHIBITING GRAY PRIMER AND (2) COATS OF SEMI-GLOSS EPOXY-COLOR AS SELECTED BY ARCHITECT.
- 9 10'-0" x 10'-0" KNOCK-OUT
- 10 4" x 8" DOWNSPOUTS, TYPICAL. ALL DOWNSPOUTS LOCATED OUTSIDE OF PAVED AREAS TO BE DIRECTLY INTO UNDERGROUND STORM DRAINAGE PIPING. TYPICAL. ALL OTHER DOWNSPOUTS TO DISCHARGE TO CONC. AREA.
- 11 OPEN ROOF PLANE TO 1" x 9" GUTTERS W/ SLOTTED DRAIN BAR & 4" x 8" RECESSED DOWNSPOUTS, TYP. COLOR BY ARCH. TYP.
- 12 NOT USED
- 13 SIGNAGE TBD - TO BE SUBMITTED SEPARATELY FOR REVIEW
- 14 9'-0" x 3'-0" CLERESTORY WINDOW
- 15 9'-0" x 3'-0" LOUVER
- 16 9'-0" x 3'-0" KNOCK-OUT

ELEVATION MATERIAL KEY

ROOF COPING, GUTTERS, + DOWNSPOUTS
 "BONE WHITE"

1"	LOW E - PLATE GLAZING - COLOR TBD
1"	LOW E - TEMPERED GLAZING - COLOR TBD
1"	LOW E - WIRED GLAZING - COLOR TBD
ACM	ACM METAL PANELS OVER LIGHT GAUGE FRAMING SILVER METALLIC
FORM LINER	GREENSTREAK No 304
"A"	BASEWALL - FINE TEXTURED PAINT COLOR: FLEUR DE SEL - SW 7666
"B"	ACCENT #1 - FINE TEXTURED PAINT COLOR: MARCH WIND - SW 7668
"C"	ACCENT #2 - FINE TEXTURED PAINT COLOR: PEWTER CAST - SW 7613
"D"	ACCENT #3 - FINE TEXTURED PAINT COLOR: PEPPERCORN - SW 7674

DOUBLE OAK SPEC INDUSTRIAL FACILITY
 UNCONDITIONED STORAGE BUILDING-PERIODICALLY OCCUPIED
 THE OAKS
 BELMONT, NC

DRAWING STATUS:

- NOT FOR CONSTRUCTION
- ISSUED FOR BIDDING
- ISSUED FOR CONSTRUCTION

OWNER / CLIENT SIGNATURE

DATE

REVISIONS

MARK	DATE	DESCRIPTION

MINIMUM 8'-0" CLEAR HEIGHT UNDER STRUCTURE, TYPICAL

PROJECT NUMBER: C21179

SHEET TITLE:

COLOR ELEVATIONS

SHEET NUMBER:

A201A
 ©2021 MERRIMAN SCHMITT ARCHITECTS, INC.