



# CITY OF BELMONT

## PLANNING & ZONING

PO Box 431  
Belmont, NC 28012  
(704) 901-2610

### NOTICE FOR PUBLIC MEETING

The Planning & Zoning Board will hear a proposed Major Development Plan for a request to construct a 143,000-square-foot office warehouse building within The Oaks Business Park. You are receiving this notification because you are the owner of property located adjacent to the subject property and are invited to attend the public meeting.

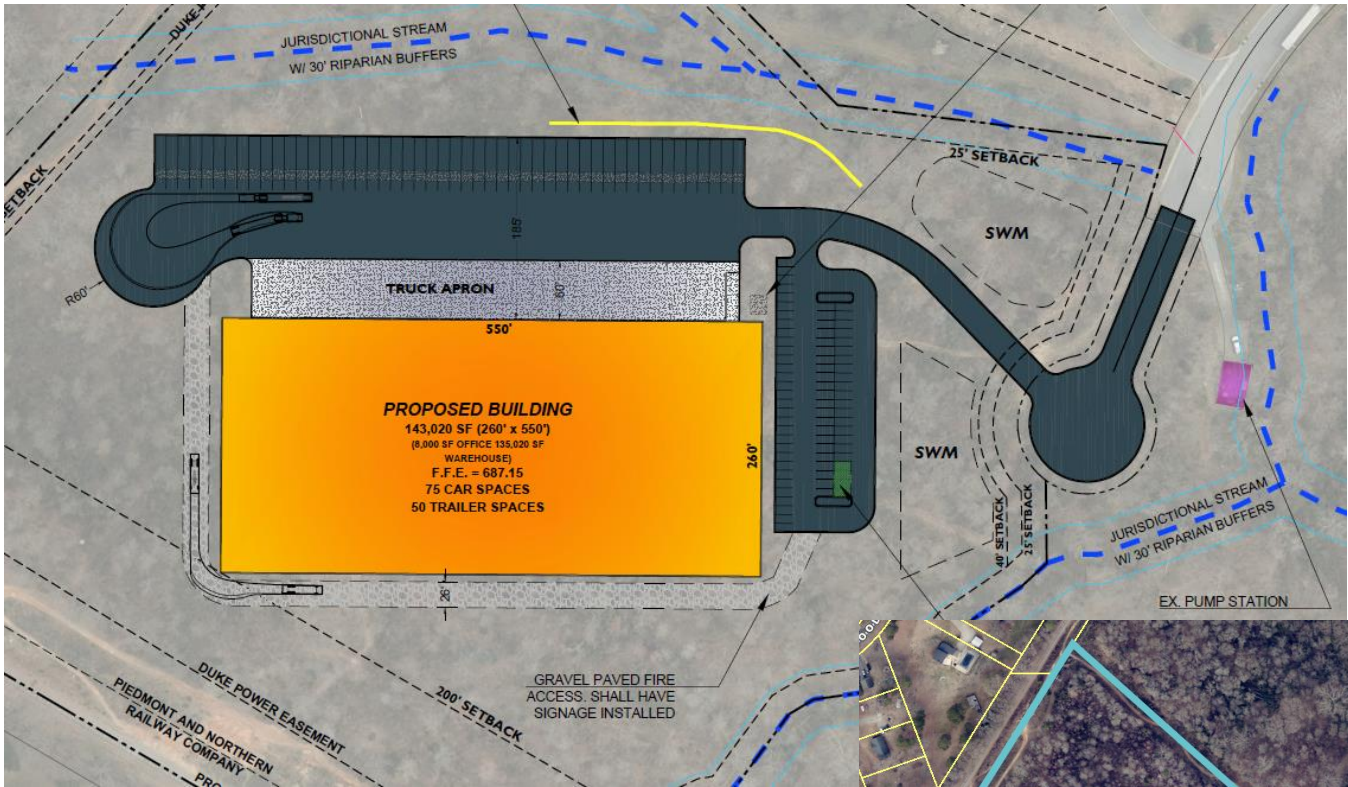
Case MDP 2022.02 TKC Double Oak	
<b>Meeting Information</b>	Thursday, May 19, 2022, at 6:30 p.m. Cityworks, 1401 E Catawba Street
<b>Subject Property Location</b>	2022 The Oaks Parkway, Belmont, NC 28012 Parcel #305366
<b>Proposed Development</b>	Request to construct a 143,000-square-foot office warehouse within The Oaks Business Park
<b>Existing Zoning</b>	Business Campus Development (BC-D)
<b>Applicant</b>	The Keith Corporation and Burton Engineering
<b>Property Owner</b>	TKC CCLXXIII LLC
<b>Project Planner</b>	Peyton Ratchford, CZO <a href="mailto:pratchford@cityofbelmont.org">pratchford@cityofbelmont.org</a>   704-901-2084
<b>Project Website</b>	<a href="https://www.cityofbelmont.org/tkc_double_oak/">https://www.cityofbelmont.org/tkc_double_oak/</a>

#### What is a Major Development Plan?

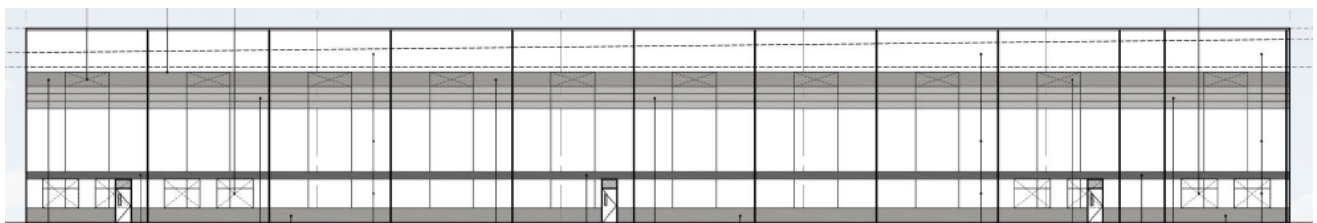
A major development plan is a development that requires a subdivision of land into eight (8) or more lots; individual building(s) exceeding 30,000 square feet in gross floor area; or, the subdivision of land into four (4) or more non-residential lots. The process creates the opportunity for the applicant, Planning Board, City Council, and the adjacent community to interact through conversation about the future development.

The documentation on the proposed project is available for viewing from 8:00 am until 5:00 pm, Monday – Friday at the Belmont Planning Department located at 1401 E. Catawba – third floor. The proposed site plan associated with this project is provided on the reverse of this notice.

Friday, May 6, 2022



Front Elevation



Rear Elevation